

#01_WLAN2.4GHz_802.11b 1Mbps_Edge 2_0mm_Ch11

Communication System: 802.11b; Frequency: 2462 MHz; Duty Cycle: 1:1.028

Medium: MSL_2450_180427 Medium parameters used: $f = 2462$ MHz; $\sigma = 2.002$ S/m; $\epsilon_r = 54.737$; $\rho = 1000$ kg/m³

Ambient Temperature : 23.3 °C ; Liquid Temperature : 22.3 °C

DASY5 Configuration:

- Probe: EX3DV4 - SN3925; ConvF(7.94, 7.94, 7.94); Calibrated: 2017/5/24;
- Sensor-Surface: 1.4mm (Mechanical Surface Detection)
- Electronics: DAE4 Sn1424; Calibrated: 2018/1/18
- Phantom: ELI v4.0_Left; Type: QDOVA001BB; Serial: TP:1029
- Measurement SW: DASY52, Version 52.10 (0); SEMCAD X Version 14.6.10 (7417)

Area Scan (41x101x1): Interpolated grid: dx=1.200 mm, dy=1.200 mm

Maximum value of SAR (interpolated) = 0.832 W/kg

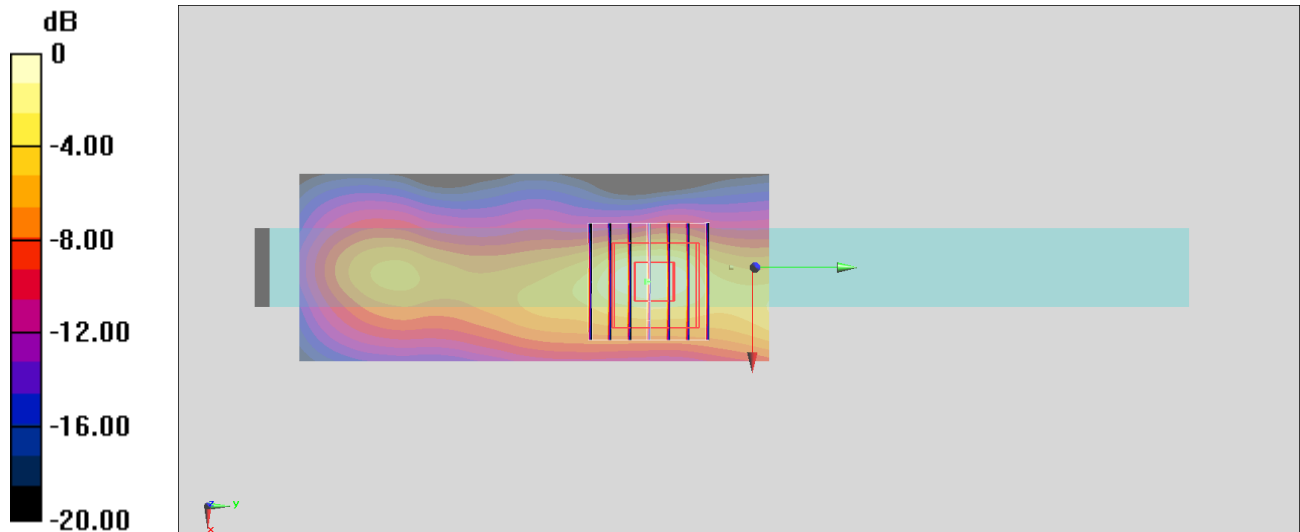
Zoom Scan (7x7x7)/Cube 0: Measurement grid: dx=5mm, dy=5mm, dz=5mm

Reference Value = 11.35 V/m; Power Drift = -0.14 dB

Peak SAR (extrapolated) = 1.02 W/kg

SAR(1 g) = 0.474 W/kg; SAR(10 g) = 0.203 W/kg

Maximum value of SAR (measured) = 0.801 W/kg



#02_Bluetooth_1Mbps_Edge 2_0mm_Ch78

Communication System: Bluetooth ; Frequency: 2480 MHz;Duty Cycle: 1:1.297

Medium: MSL_2450_180430 Medium parameters used: $f = 2480$ MHz; $\sigma = 2.04$ S/m; $\epsilon_r = 52.369$; $\rho = 1000$ kg/m³

Ambient Temperature : 23.4 °C ; Liquid Temperature : 22.4 °C

DASY5 Configuration:

- Probe: EX3DV4 - SN3976; ConvF(7.8, 7.8, 7.8); Calibrated: 2018/1/23;
- Sensor-Surface: 1.4mm (Mechanical Surface Detection)
- Electronics: DAE3 Sn495; Calibrated: 2017/5/22
- Phantom: ELI v5.0; Type: QDOVA002AA; Serial: 1131
- Measurement SW: DASY52, Version 52.10 (0);SEMCAD X Version 14.6.10 (7417)

Area Scan (51x71x1): Interpolated grid: dx=1.200 mm, dy=1.200 mm

Maximum value of SAR (interpolated) = 0.378 W/kg

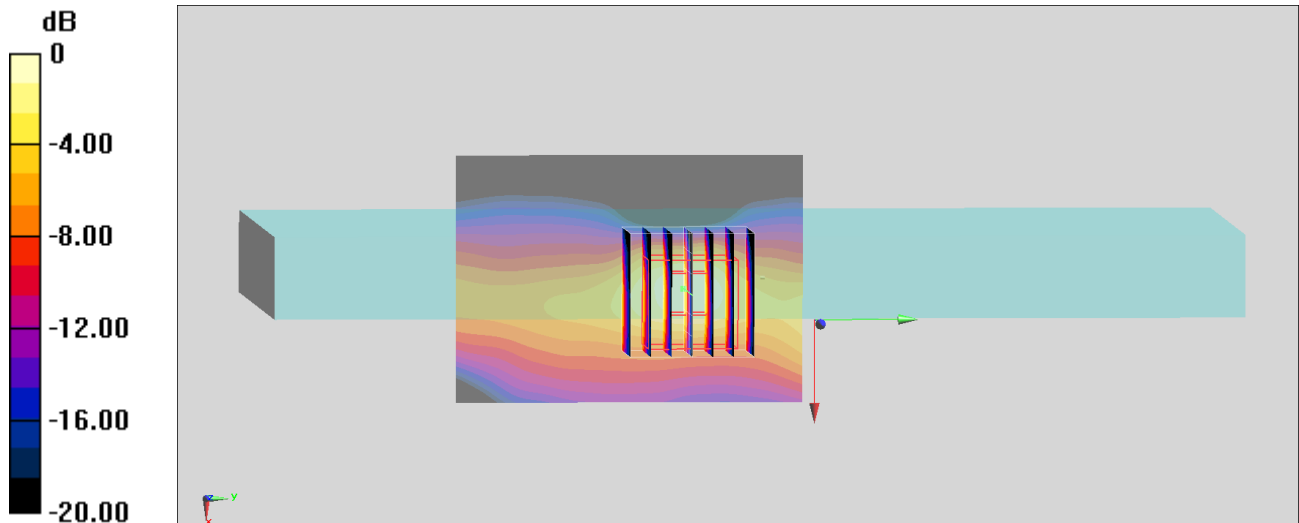
Zoom Scan (7x7x7)/Cube 0: Measurement grid: dx=5mm, dy=5mm, dz=5mm

Reference Value = 13.13 V/m; Power Drift = -0.04 dB

Peak SAR (extrapolated) = 0.455 W/kg

SAR(1 g) = 0.211 W/kg; SAR(10 g) = 0.088 W/kg

Maximum value of SAR (measured) = 0.360 W/kg



0 dB = 0.360 W/kg = -4.44 dBW/kg