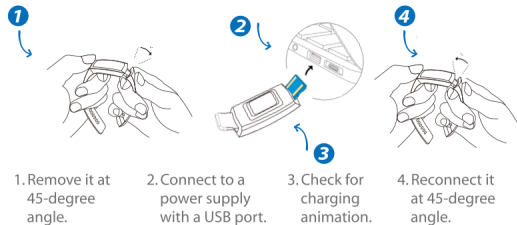


## ➤ Charging Your Pocket Auto Watchic

The **Pocket Auto Watchic** has a built-in USB charging connector. You can directly charge it while connecting the built-in USB charging connector into USB cable or power source. It takes 1.5 hours to be fully charged.

*Note: Check that the **Pocket Auto Watchic** is inserted into the USB port of the power source the correct way up. Even though it goes into the USB port both ways - the animation screen will only appear when inserted in the correct orientation. Only when the charging animation is displayed, is your **Pocket Auto Watchic** actually charging.*



## ➤ Pair Pocket Auto Watchic with your phone

1. Turn on your mobile Bluetooth.
2. Launch the Map View of Pokémon Go. Tap the **Main Menu** button.
3. Tap **Settings** at the top right.
4. Select **Pokémon Go Plus** in settings page.
5. Tap the red circle on **Pocket Auto Watchic** to make it show on the device list, and select **Pokémon Go Plus** from available devices.
6. Waiting for pairing. When **Pokémon Go Plus** icon turns on, it means the pairing is completed.



## ➤ Having difficulties with pairing?

When your **Pocket Auto Watchic** has been paired to other devices, out of power or not functioning that fail to be paired to your current device.

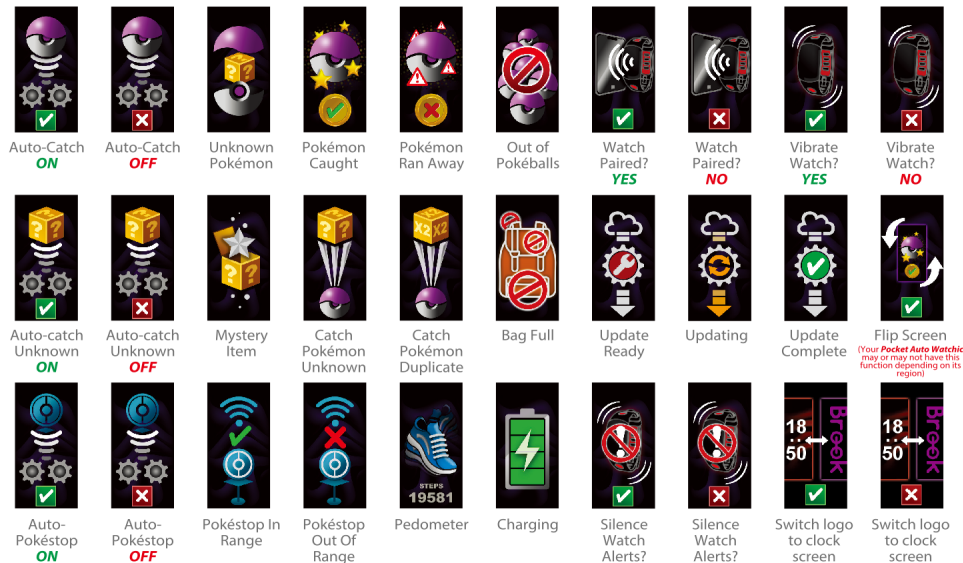
1. Go to Bluetooth in Settings on the phone to remove/ clear **Pokémon Go Plus**.
2. Go to the Settings in the game, exit / clear **Pokémon Go Plus**.
3. Then tap the red circle on **Pocket Auto Watchic**. When it pops up a new **Pokémon Go Plus** in the settings in the game, select it for re-pairing

## ➤ How to change the mode

1. Touch the red circle to switch between modes.
2. Long press the red circle for 3 seconds to turn **ON** / turn **OFF** that mode.



## ➤ Animation Screens



## ➤ Ensure that your Pocket Auto Watchic has the latest firmware



Download the **Pocket Auto Watch App** for even more features including checking your stats and changing your settings to improve the user experience. Simply scan the QR code that will take you to the **Pocket Auto Watch app** on the Apple or

Android App Store pages or directly search "**Pocket Auto Watch**" in the App store.

To connect your **Pocket Auto Watchic** to the **Pocket Auto Watch App**, you must close the Pokémon Go App. Press the button on the **Pocket Auto Watchic** to wake the screen and it will automatically connect to the open **Pocket Auto Watch App**. Updates will be downloaded automatically.

**Time Settings:** When you connect **Pocket Auto Watchic** to the **Pocket Auto Watch App**, the **Pocket Auto Watch App** will automatically update the date and time on **Pocket Auto Watchic**. The app also enables the default display settings of **Pocket Auto Watchic**. You can switch to display Brook Logo or time.

*Note: The **Pocket Auto Watchic** cannot connect to more than one App at a time so the **Pokémon Go App** cannot be running in the background. If the connection is failed, close both Apps and then open the **Pocket Auto Watch App** again.*

## ★ IMPORTANT ★



Product Liability Insurance included



This product isn't waterproof

1. Device requires Bluetooth low-energy compatible smartphone with Pokémon Go app installed. Compatible with iPhone 6S or higher devices with iOS Ver. 11.1 or higher version installed. Compatible with Android devices with 4 GB RAM or more. Bluetooth Smart (Bluetooth Ver. 4.0 or higher) capability and Android Ver. 7.0 or higher version installed.
2. **Pocket Auto Watchic** may fail to pair to device because of the update of Pokémon Go app, or the upgrade of Android and iOS.
3. **Pocket Auto Watchic** will time out automatically every hour. Players have to re-connect it.
4. **Pocket Auto Watchic** will time out every 3-5 minutes if the mobile is idle.



For the latest user guide and more information, visit Brook's website.

## How to Check Safety Regulation Information?

To check "Safety Regulation Information" screen, long press the button on Watchic Plus when it shows "Brook" logo.

In "Safety Regulation Information" screen, press the button again to return to the menu.

### FCC Statement

This device complies with part 15 of the FCC Rules. Operation is subject to the following two conditions:  
 (1) This device may not cause harmful interference, and  
 (2) This device must accept any interference received, including interference that may cause undesired operation.

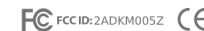
### NOTE

This equipment has been tested and found to comply with the limits for a Class B digital device, pursuant to part 15 of the FCC Rules. These limits are designed to provide reasonable protection against harmful interference in a residential installation.

This equipment generates, uses and radiates radio frequency energy, and if not installed and used in accordance with the instructions, may cause harmful interference to radio communications. However, there is no guarantee that interference will not occur in a particular installation.

If this equipment does cause harmful interference to radio or television reception, which can be determined by turning the equipment off and on, the user is encouraged to try to correct the interference by one or more of the following measures:  
 - Reorient or relocate the receiving antenna.  
 - Increase the separation between the equipment and receiver.  
 - Connect the equipment into an outlet on a circuit different from that to which the receiver is connected.  
 - Consult the dealer or an experienced radio/TV technician for help.

Changes or modifications not expressly approved by the party responsible for compliance could void the user's authority to operate the equipment.



Product Name: **Pocket Auto Catch Watchic Plus**  
 Model Name: ZPP005Z