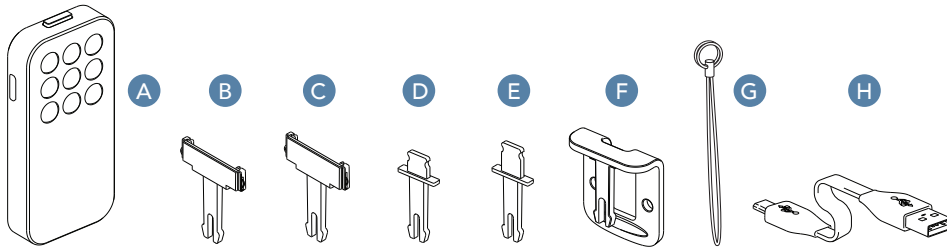


Includes:



- A. [expose] smart (rechargeable light)
- B. Standard iPhone 4s Clip
- C. Long iPhone 4s Clip
- D. Standard iPhone 5 series Clip
- E. Long iPhone 5 series Clip
- F. General purpose clip
- G. Lanyard with metal loop
- H. USB to micro-USB cable

BEFORE FIRST USE:

Please fully recharge [expose] smart before first use.

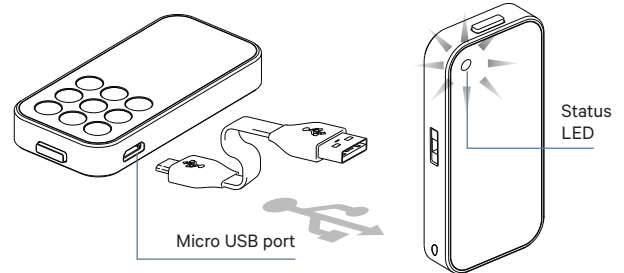
Recharging the battery

1. Connect [expose] smart to the USB to micro-USB cable
 2. Connect it to a computer's or another electronic device's USB port
- When using a wall charger, use an approved USB charger only. A full charge cycle will take approximately 3 hours.

Battery low/charge status LED is located at the rear of the light.

The LED will flash red when holding a low charge.

While the light is charging, the battery low/charge status LED will be red, turning green once fully charged.



Wall charger specifications:

DC Output: 5VDC (+0.25V/-0.1V) >=0.5A. Use chargers with suitable approvals and certifications only.

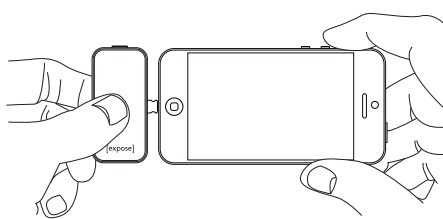
Charging conditions: Indoors only in temperatures above 10°C (50°F).

Using the mounting accessories

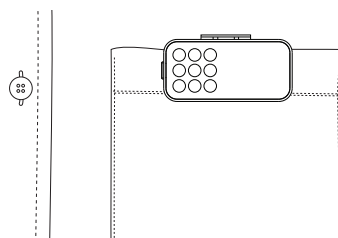
There are a number of clips included in this package that allow you to attach [expose] smart to various objects.

Mounting [expose] smart to:

- iPhone: 4s and 5 series. Refer parts B, C, D and E. Long and short clips accommodate the iPhone with and without a case respectively (fig. A)
- General purpose clip. Refer part F. Allows attachment of the light to other objects such as garment pockets (fig. B)
- Lanyard with metal loop. Refer part G. Attach the light to the lanyard provided and keep it handy with your keys (fig. C)



(fig. A)



(fig. B)

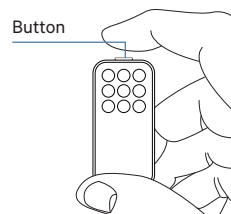


(fig. C)

Manual mode

Using the light manually

1. Press/hold the button for 2 seconds to turn the light on
2. Press/release the button to switch between modes (there are 3 brightness levels to choose from)
3. Position the light to provide best illumination
4. Take photos and videos when you're ready
5. To turn the light off, press/hold the button again for 2 seconds



Mode	Effect	Runtime (minutes)
1	High	< 20
2	Medium	< 40
3	Low	< 70

Features and function

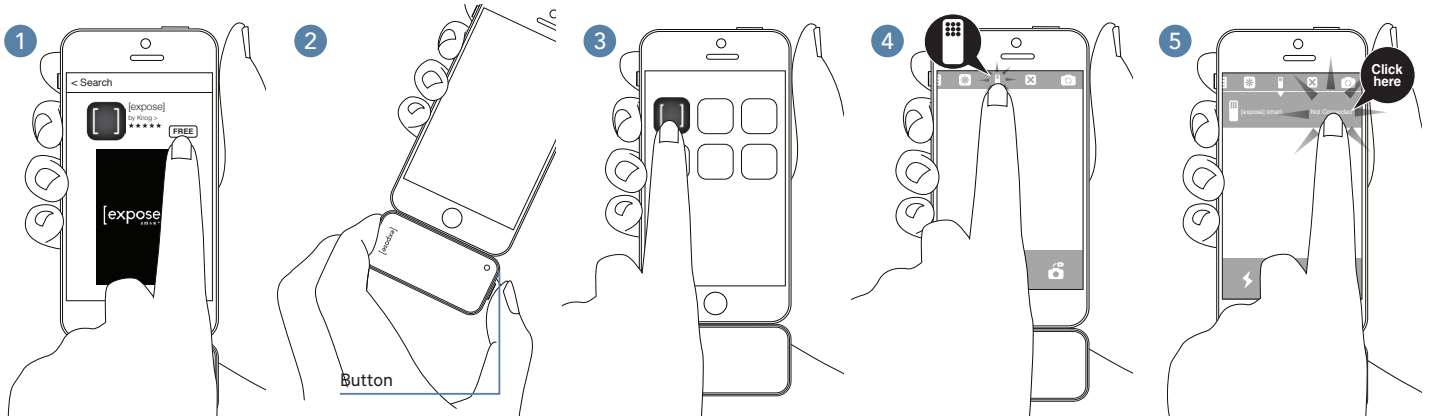
	Modes of use	Adjustment options	Image options	Other
Photo	Flash / Constant	Brightness / White balance / Zoom	Normal / Square / Grid	Sharing* / Preview
Video	Strobe / Constant	Brightness / White Balance	Normal	Sharing* / Preview

* Note: Social sharing options will vary depending on the user's custom setup and is subject to change from time to time when the application is updated. Information at time of printing is correct. For updates, please refer to the website at knog.com.au



Basic tutorial for using [expose] smart with our custom app for iPhone 4s and 5 series

Getting ready for night photography



1. Download [expose] from the App Store.

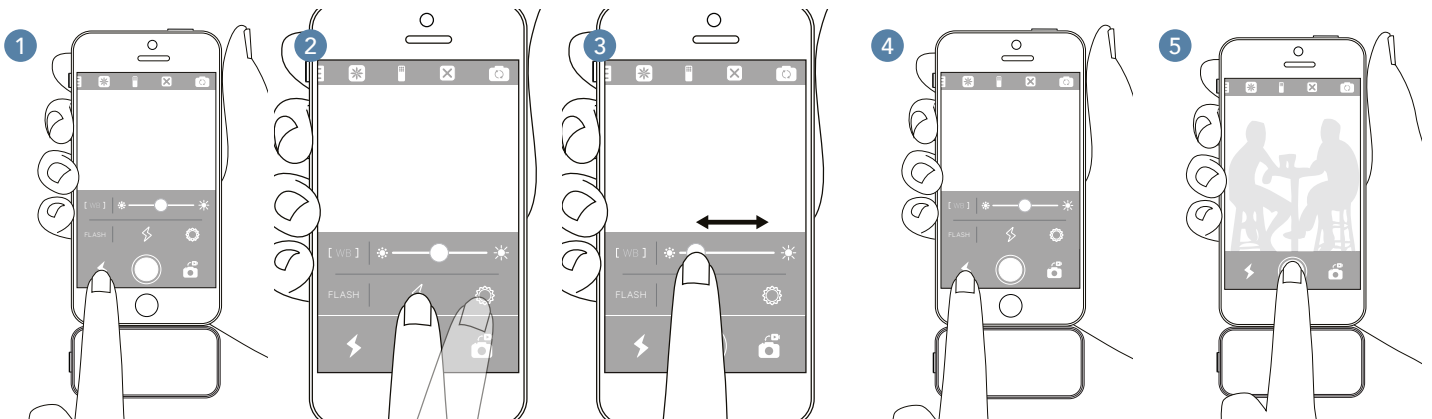
2. Press/release the button on [expose] smart quickly to activate the bluetooth signal.

3. Open [expose] on your iPhone.

4. Click the icon that looks like [expose] smart to trigger the device dropdown menu.

5. In the dropdown menu, click "not connected" to connect [expose] smart.

Basic steps for night photography



1. Click the flash icon to activate flash pop up menu.

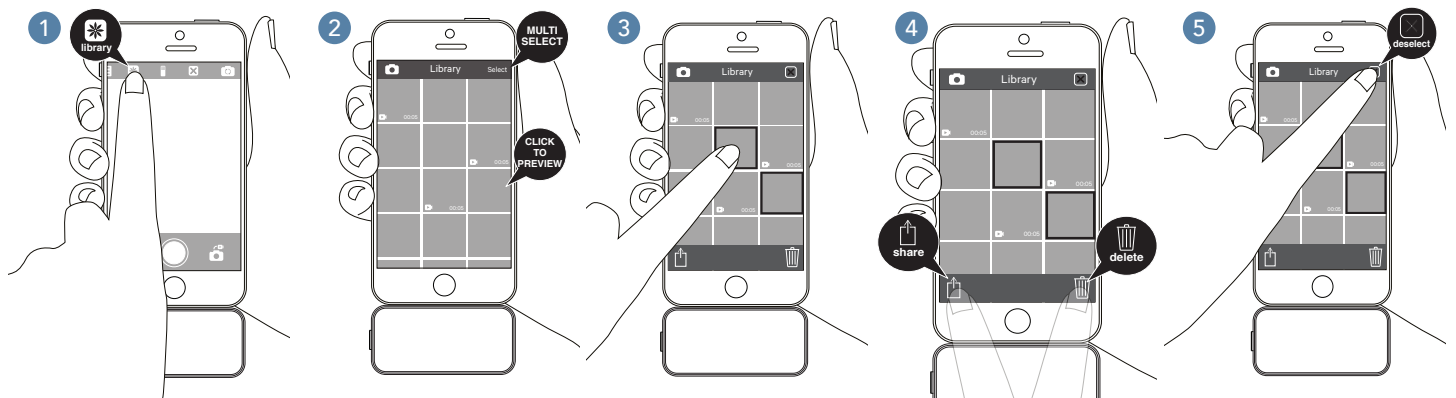
2. Choose between flash or constant modes.

3. Move the slider left or right to adjust brightness

4. Click the flash icon again to remove the pop up.

5. Go ahead and shoot!

How to use the library and sharing functions



1. Go to library.

2. Choose an image to preview or click 'select' for multi-select options.

3. With multi-select active, you can click a number of items to share or delete.

4. Press the share or delete function to share or delete respectively.

5. If you change your mind you can always hit the 'X' to deselect the items chosen.

User tips













To reduce battery consumption, kill the [expose] app if you're not planning to use it for a while.

Try pinch and zoom in camera mode to get more detailed shots.

Adjust white balance to get better or different colour effects.

Try 'strobe' in video mode and see what crazy kind of footage you can make.

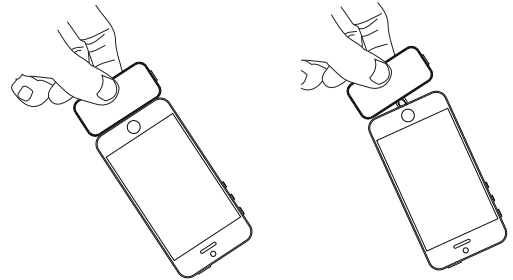
APP ICONS

Modes		Adjustments		Format		Other	
 Photo Mode	 Video Mode	WB	White balance	 Standard	 Library		
Flash	 Strobe	[]	Light brightness	 Grid overlay	 Device Connect		
Constant	 Constant		Zoom (pinch screen)	 Square crop	 Front / Back camera		

PRODUCT MAINTENANCE

Handling the device

Never pick up your iPhone by holding onto [expose] smart. While the connectors provide a secure fit to the iPhone during normal use, they are not designed to support the weight of the phone itself.



After use

Remove the device from the mobile phone after use. This device is not a mobile phone accessory.

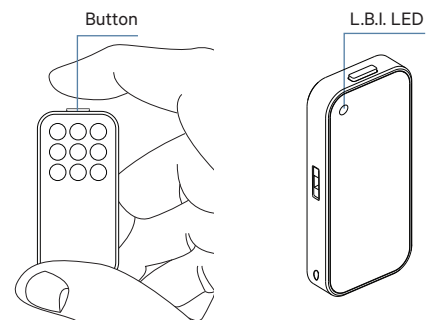
Storage mode

Storage mode optimizes battery longevity. Utilize storage mode when lights are not used for more than a fortnight.

1. Fully charge the light until the Low Battery Indicator (L.B.I.) LED turns green
2. Remove from power source
3. Hold the button down for 5 seconds until the L.B.I. LED turns red

The main LEDs will stay on and the light will 'drain' itself to the optimum voltage level. The main LEDs will flash several times just before turning off, signalling storage mode completion.

After storage, recharge the battery to full before use.



Warranty terms:

The light* is guaranteed for 2 years against manufacturing defects only. The battery is guaranteed for 6 months against manufacturing defects only. Any damage arising from misuse, accident, normal wear and tear or negligence is not covered. Disassembly of product and/or attempted repair by anyone other than a Knog technician will void the warranty. Claims made for repair or replacement of the light for manufacturing defects will be honoured upon return of product to point of purchase along with original receipt dated within two years from the original date of purchase only.

Knog assumes no liability for any accident, injury, death, loss or other claim related to or resulting from the use of this product. In no event shall Knog be liable for incidental or consequential damages relating to or resulting from the use of this product or any of its parts.

*Note: not including the battery

Warnings:

Use only with approved USB charging devices.

Do not dispose of product in fire or expose to extreme heat.

Do not attempt to disassemble product.

Improper care and treatment of the light will void warranty.

Not to be used for personal night vision or safety lighting. Designed specifically for providing illumination for video and photographic activities only.

Run time variations:

[expose] smart runtimes are based on tests carried out at room temperature. The light will operate best between 10°C (50°F) and 35°C (95°F). In temperatures below this range, the runtime will reduce further. LiPo batteries have a chemistry that is vulnerable to environment and temperature, therefore runtimes will vary depending on these prevailing conditions.

Disclaimer and more information:

All information is correct at time of printing. Specifications are subject to change without notice. Please visit knog.com.au for more information and updates.

COMPLIANCE

FCC Compliance statement (United States)

This device complies with Part 15 of the FCC Rules. Operation is subject to the following two conditions: (1) this device may not cause harmful interference, and (2) this device must accept any interference received, including interference that may cause undesired operation. Changes or modifications not expressly approved by the party responsible for compliance could void the user's authority to operate the equipment.

This equipment has been tested and found to comply with the limits for a Class B digital device, pursuant to Part 15 of the FCC Rules. These limits are designed to provide reasonable protection against harmful interference in a residential installation. This equipment generates, uses and can radiate radio frequency energy and, if not installed and used in accordance with the instructions, may cause harmful interference to radio communications. However, there is no guarantee that interference will not occur in a particular installation. If this equipment does cause harmful interference to radio or television reception, which can be determined by turning the equipment off and on, the user is encouraged to try to correct the interference by one or more of the following measures:

- Reorient or relocate the receiving antenna.
- Increase the separation between the equipment and receiver.
- Connect the equipment into an outlet on a circuit different from that to which the receiver is connected.
- Consult the dealer or an experienced radio/TV technician for help.

IC Compliance standard (Canada)

This device complies with Industry Canada license-exempt RSS standard(s). Operation is subject to the following two conditions: (1) this device may not cause interference, and (2) this device must accept any interference, including interference that may cause undesired operation of the device.

Le présent appareil est conforme aux CNR d'Industrie Canada applicables aux appareils radio exempts de licence. L'exploitation est autorisée aux deux conditions suivantes : (1) l'appareil ne doit pas produire de brouillage, et (2) l'utilisateur de l'appareil doit accepter tout brouillage radioélectrique subi, même si le brouillage est susceptible d'en compromettre le fonctionnement.