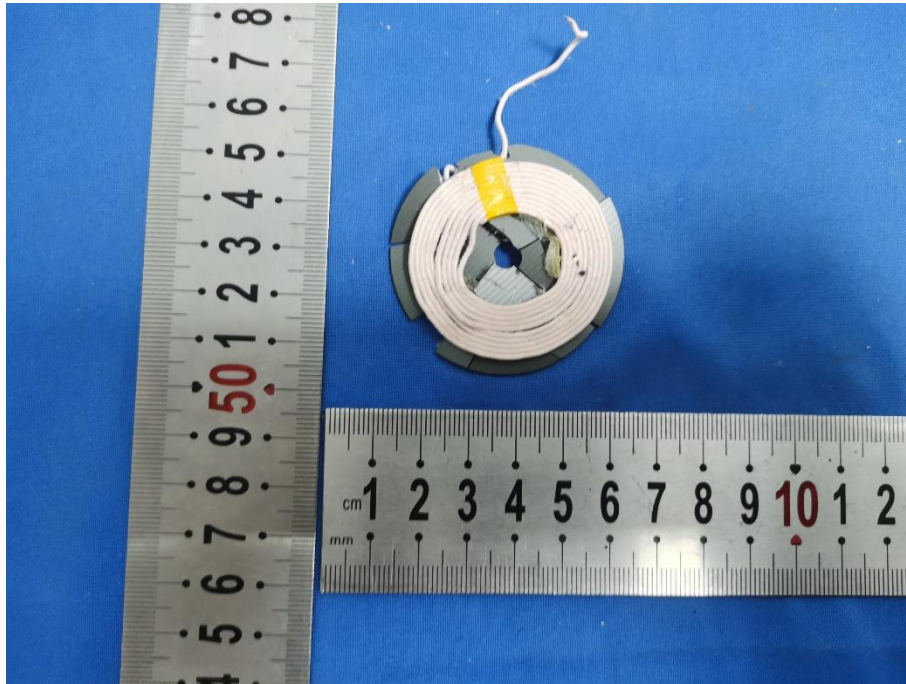
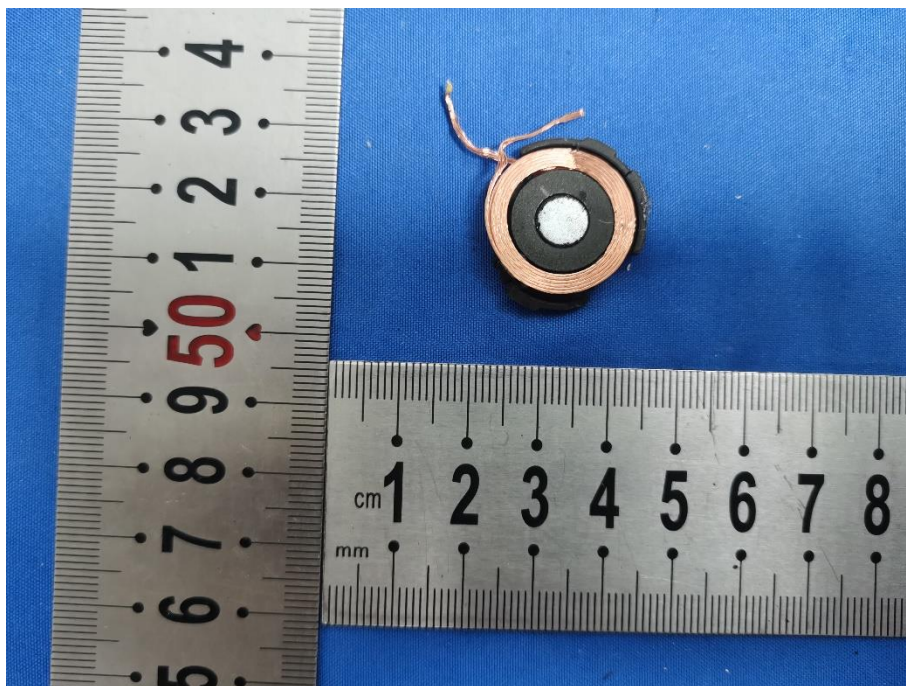


ANT PHTOT



L	W	H
42mm±0.2	42mm±0.2	0.2mm±0.1



L	W	H
21mm±0.2	21mm±0.2	0.2mm±0.1



L	W	H
41mm±0.2	41mm±0.2	0.2mm±0.1

All measurements were performed radiated and therefore additional antenna gain documentation is not required.