

**Internal Photos of
JHS-800S MARINE VHF RADIOTELEPHONE**

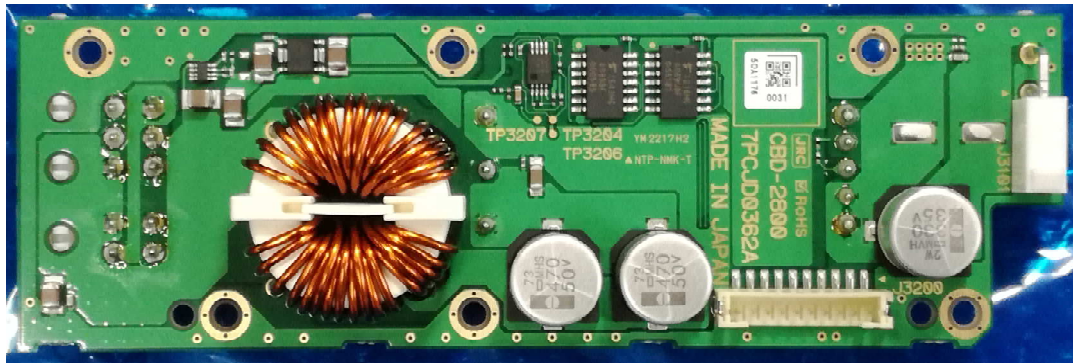
Contents

1. JHS-800S MARINE VHF RADIOTELEPHONE
 - 1.1 CBD-2800 (PS UNIT)
 - 1.2 CCK-2800 (DIST SW UNIT)
 - 1.3 CCK-2801 (POWER SW UNIT)
 - 1.4 CDE-2800 (CONNECTOR UNIT)
 - 1.5 CDJ-2800 (CONTROL UNIT)
 - 1.6 CMN-2800 (RF UNIT)
2. Inside of Front Panel
3. Inside of Rear Case (Front View)
4. Inside of Rear Case (Top View)

1. JHS-800S MARINE VHF RADIOTELEPHONE

1.1 CBD-2800 (PS UNIT)

Parts side

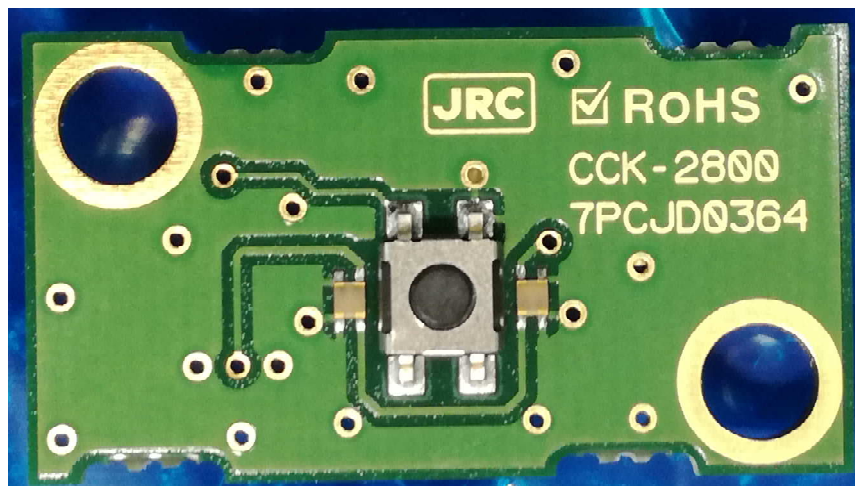


Solder side

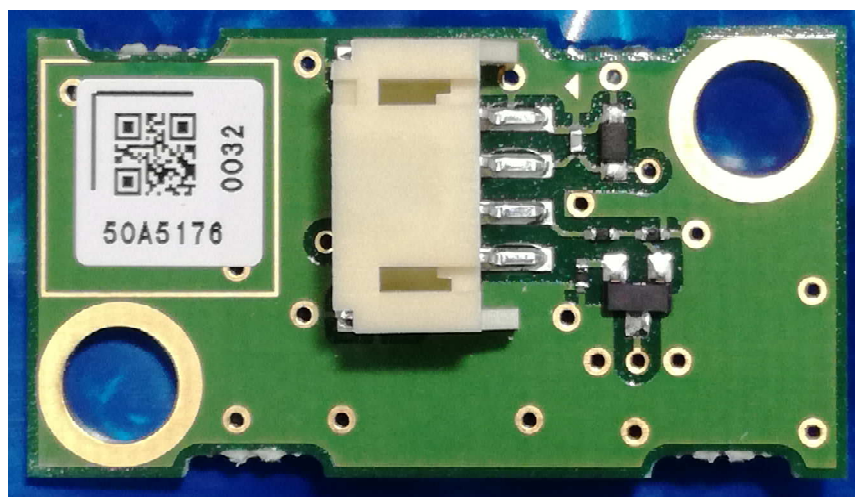


1.2 CCK-2800 (DIST SW UNIT)

Parts side

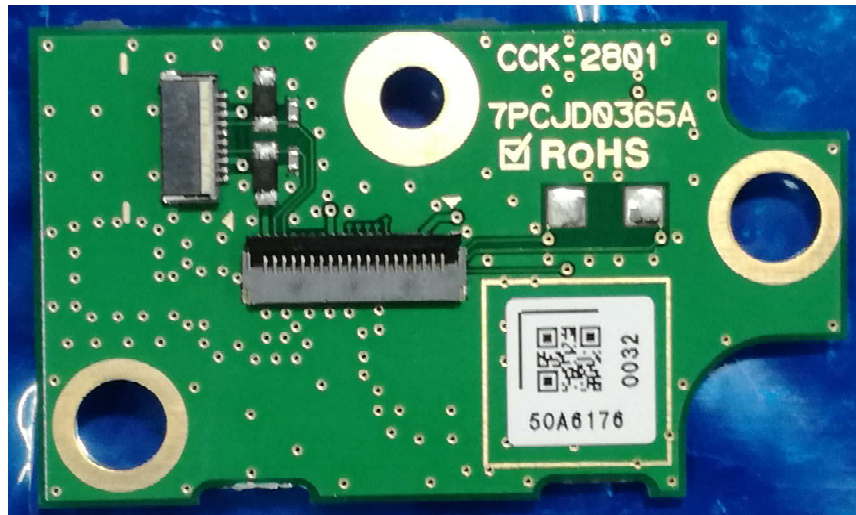


Solder side

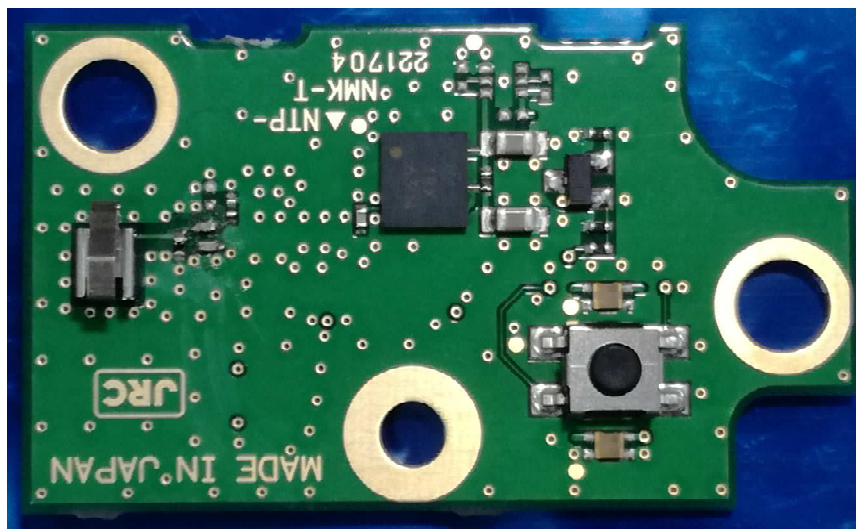


1.3 CCK-2801 (POWER SW UNIT)

Parts side

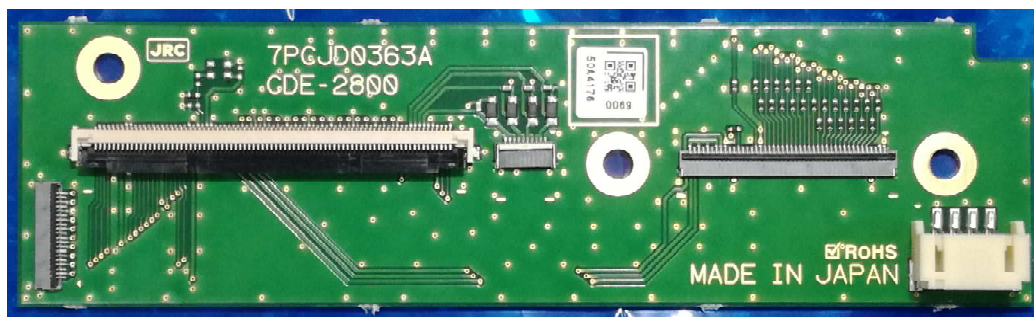


Solder side

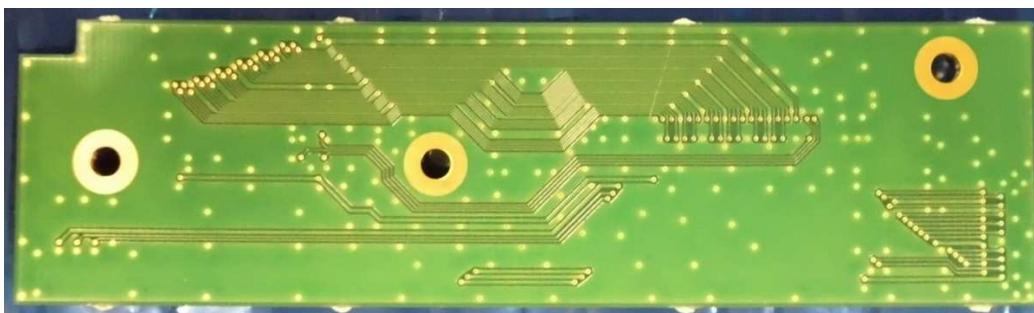


1.4 CDE-2800 (CONNECTOR UNIT)

Parts side

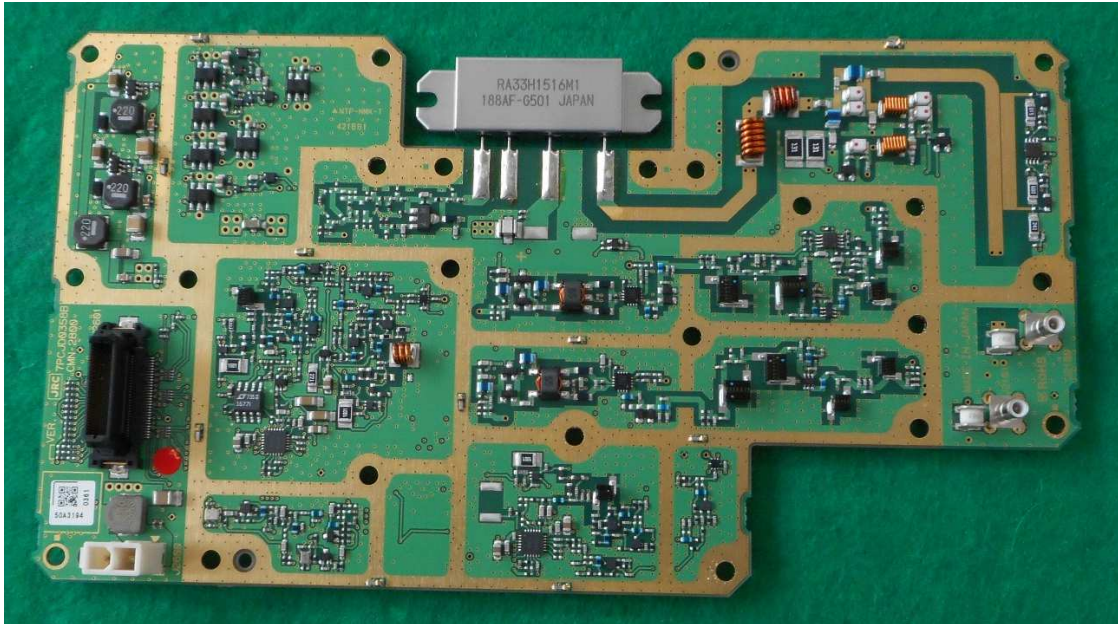


Solder side

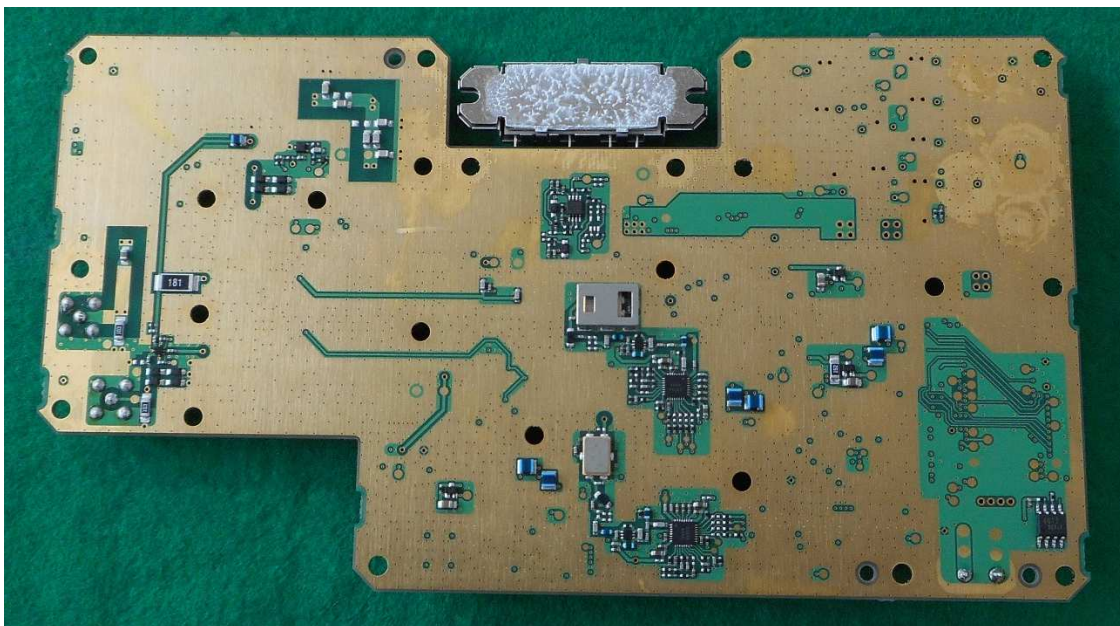


1.6 CMN-2800 (RF UNIT)

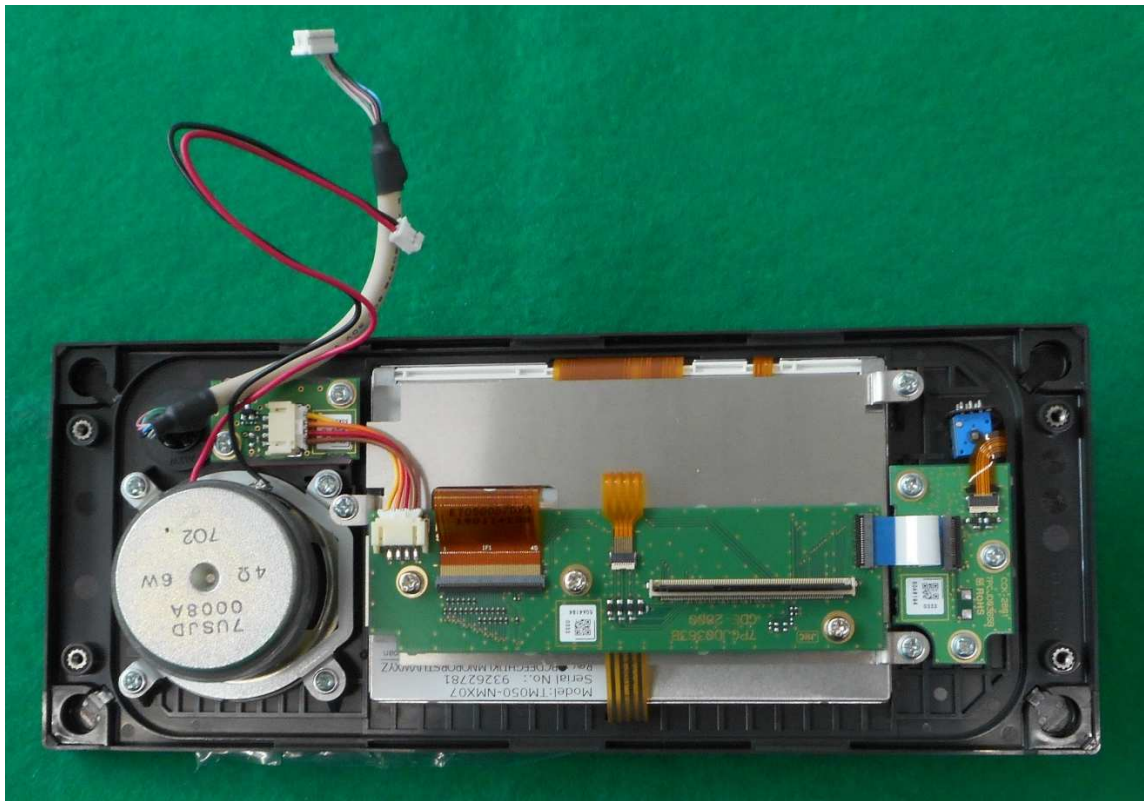
Parts side



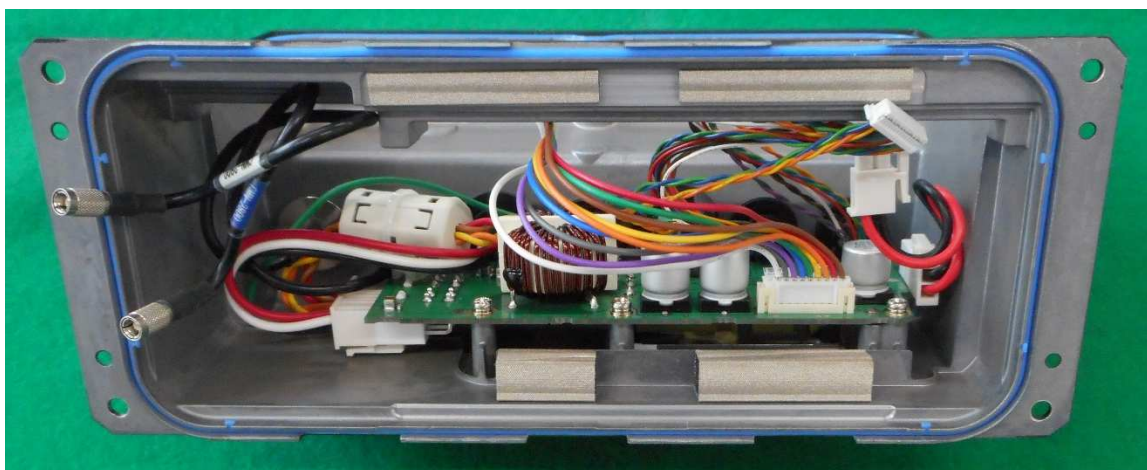
Solder side



2. Inside of Front Panel



3. Inside of Rear Case (Front View)



4. Inside of Rear Case (Top View)

