

# Shenzhen Yishengbang Technology Co., Ltd.

Shenzhen Yishengbang Technology Co., Ltd.

Customer: 伟合佳

Project: 83单

Product: WIFI/GPS+4G Antenna—FPC

Report date: 2023-1-31

Prepared by : chen shi lian

Checked by : Eason Huang

Approved by :

# ***Purpose***

This report is to measure the performance of SLK for Master Antenna on伟合佳. All measure data are showed below.

## ***Content***

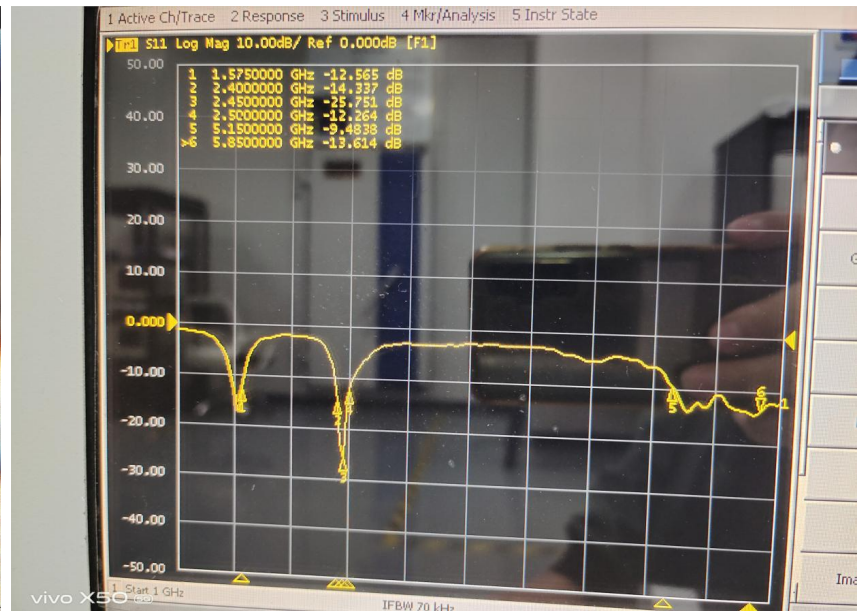
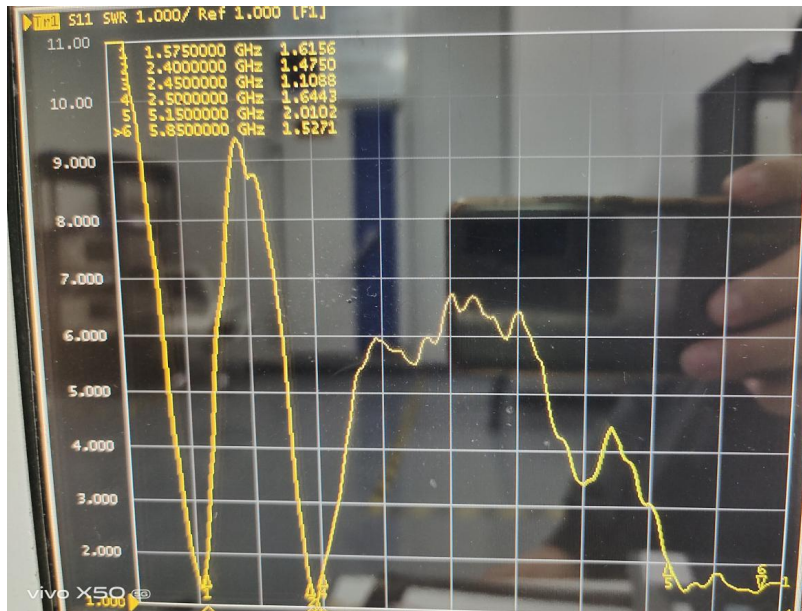
1. Product Overview
2. Test Result
  - 2.1 WIFI/GPS Antenna VSWR/S11
  - 2.2 WIFI/GPS Antenna Gain/Efficiency/3D DATA
3. Test Result
  - 3.1 4G Antenna VSWR/S11
  - 3.2 4G Antenna VSWR/S11
  - 3.3 4G Antenna TRP/TIS
4. Conclusions

# 1. Product Overview & Dimension



## 2. Test Result

### 2.1 WIFI/GPS Antenna VSWR/S11





## 2. Test Result

### 2.2 WIFI/GSP Antenna Gain/Efficiency/3D DATA

Frequency (MHz)	Efficiency (dBi)	Gain (dBi)	Efficiency (%)
1570.0	-4.56	0.80	34.98
1575.0	-4.31	0.84	37.11
1580.0	-4.48	0.66	35.68
2400.0	-4.33	0.14	36.86
2410.0	-4.34	0.12	36.78
2420.0	-4.38	-0.03	36.47
2430.0	-4.10	0.20	38.91
2440.0	-4.08	0.14	39.10
2450.0	-4.25	0.00	37.56
2460.0	-4.47	-0.56	35.73
2470.0	-4.43	0.01	36.03
2480.0	-4.29	0.02	37.20
2490.0	-4.22	0.08	37.81
2500.0	-4.41	-0.05	36.26
5150.0	-4.54	2.34	35.16
5350.0	-4.17	2.95	38.32
5550.0	-4.33	4.30	36.89
5750.0	-4.23	4.79	37.76
5850.0	-3.95	4.91	40.26

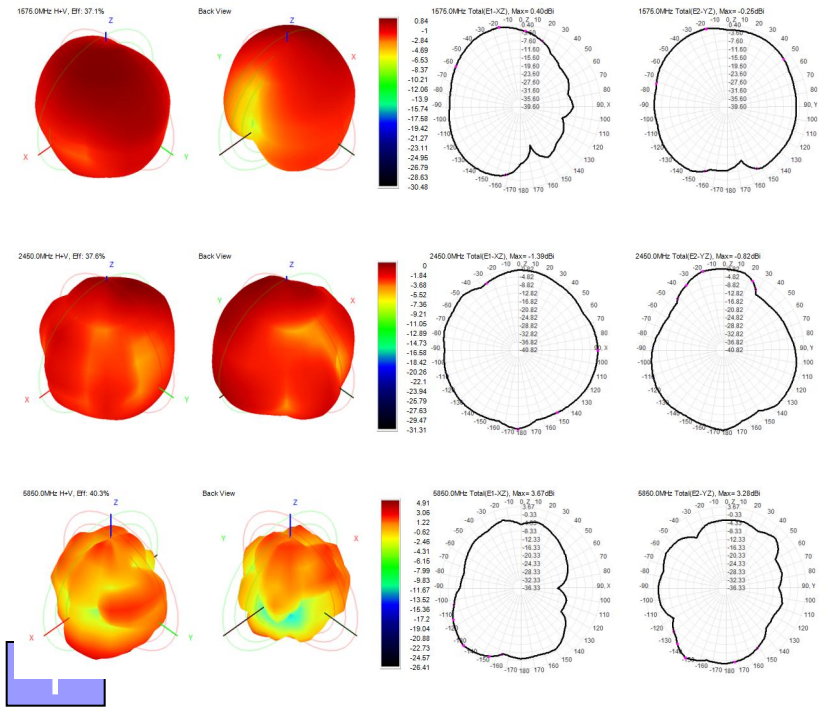
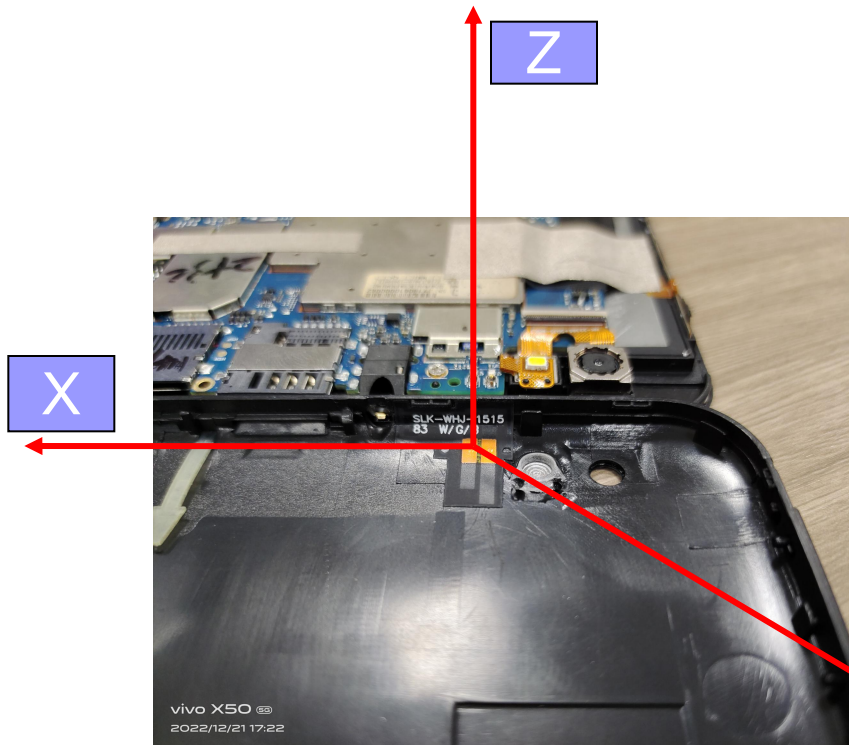
## 2. Test Result

### 2.2 WIFI active test

WIFI 有源测试			
频段	1	6	11
B-TRP-11MBps	13.09	14.67	14.49
B-TIS-11MBps	-83.03	-81.78	-83.17
G-TRP-6MBps	11.23	13.18	13.31
G-TIS-6MBps	-83.19	-83.63	-83.45
N-TRP-MCS0	11.12	13.22	13.08
N-TIS-MCS0	-83.8	-83.5	-83.14
频段	36	149	165
A-TRP-6MBps	10.36	11.07	11.32
A-TIS-6MBps	-82.29	-83.19	-83.89

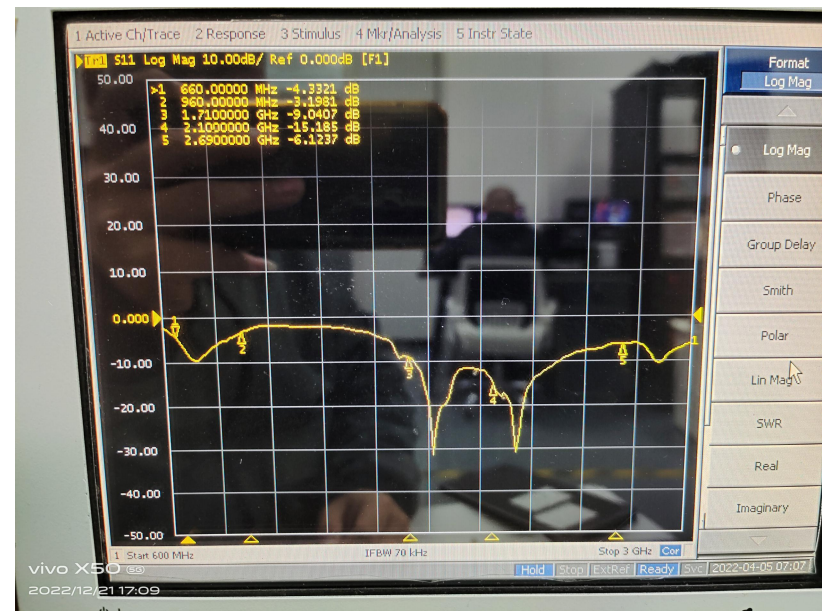
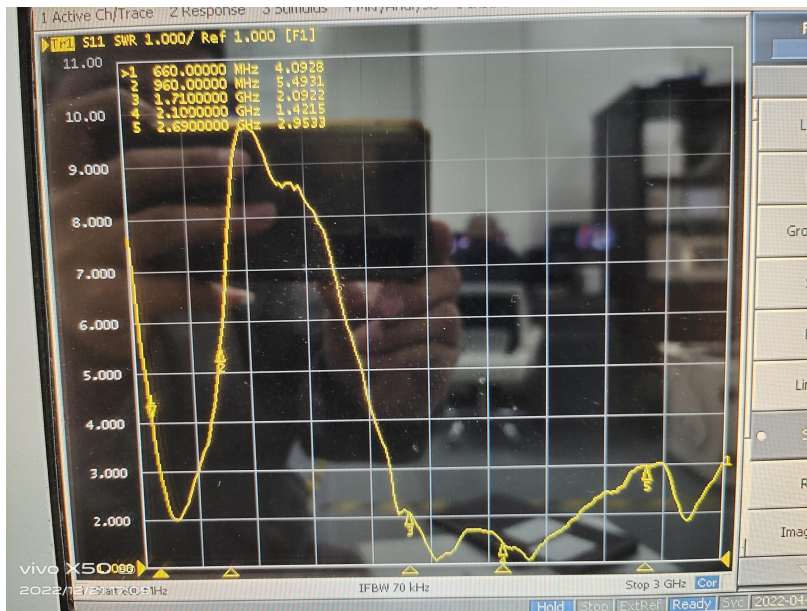
# 2. Test Result

## 2.2 WIFI/GPS Antenna Gain/Efficiency/3D DATA



# 3. Test Result

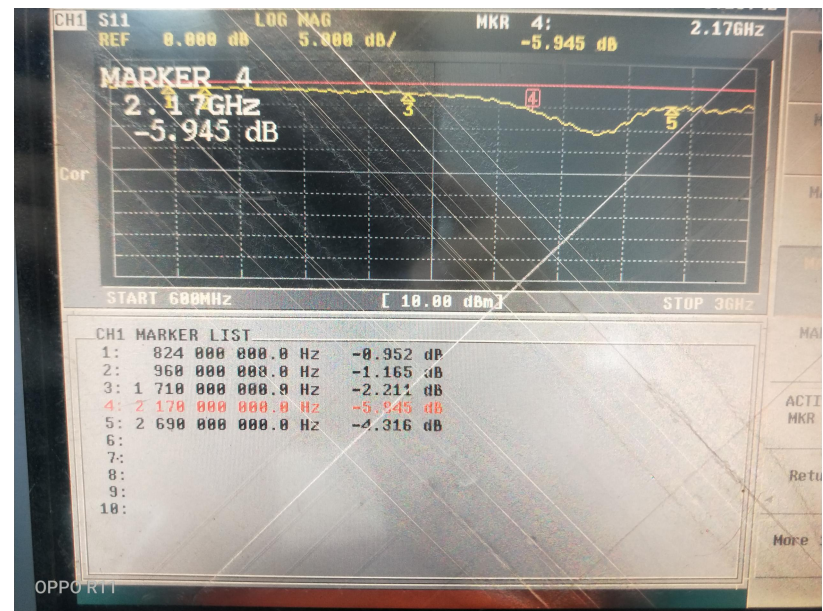
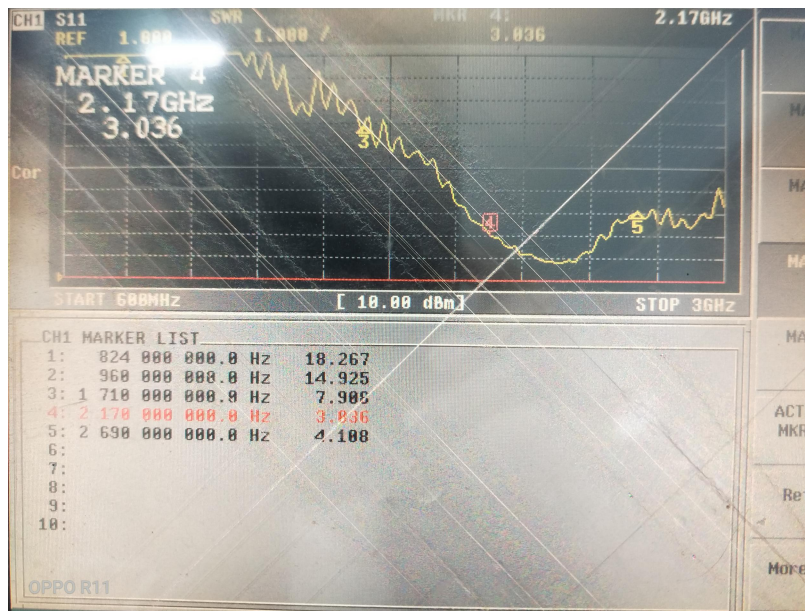
## 3.1 4G MAIN Antenna VSWR/S11





# 3. Test Result

## 3.2 4G AUX Antenna VSWR/S11

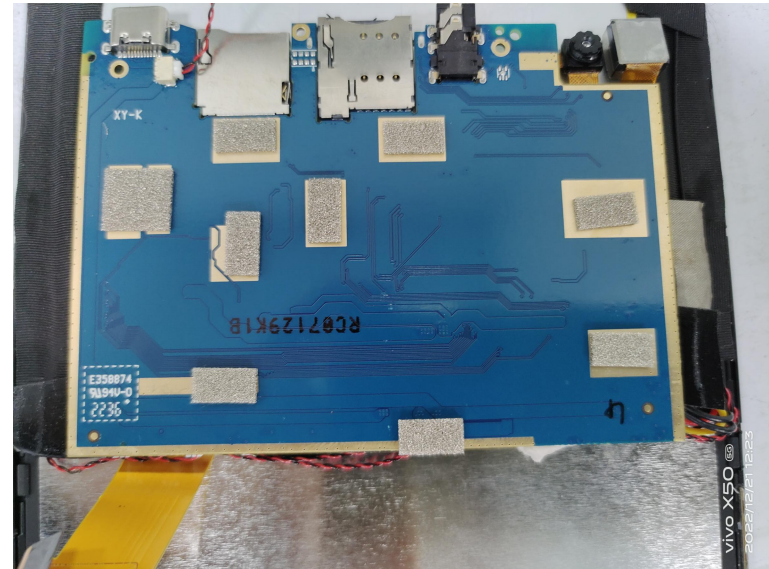


# 3. Test Result

## 3.3 4G Antenna TRP/TIS

2G 频段	LTE-L	LTE-M	LTE-R	TIS	天线增益
GSM850	26.24	26.59	26.83	-102.23	0.7
GSM900	26.17	25.67	25.34	-102.45	0.8
GSM1800	26.11	25.87	25.47	-102.89	1
GSM1900	25.77	25.48	25.62	-103.08	1.1
3G 频段	LTE-L	LTE-M	LTE-R	TIS	天线增益
WCDMA-B1	18.78	19.07	19.14	-103.39	1.3
WCDMA-B2	20.28	19.91	19.42	-103.66	1.2
WCDMA-B5	17.64	18.24	18.58	-102.55	0.7
4G 频段	LTE-L	LTE-M	LTE-R	TIS	天线增益
LTE-2	20.02	20.19	20.25	-95.33	1.2
LTE-4	19.59	20.12	20.28	-93.46	1.1
LTE-5	16.61	16.62	16.77	-89.77	0.7
LTE-12	18.7	19.18	19.22	-90.61	0.5
LTE17	19.22	18.89	18.91	-90.31	0.5
LTE-41	18.91	18.29	16.44	-90.47	1.4
LTE-66	18.38	18.35	19.09	-92.13	1.1
LTE-71	15.61	16.08	16.61	-89.29	0.4

## 4. Conclusions



如图所示:

- 1.在屏排线拉一块大导电布包起来作屏蔽处理。
- 2.在主板屏蔽罩拉一块导电布与屏接地处理。
- 3.主板底部环境处理，漏铜区贴上导电海绵与屏接地处理。