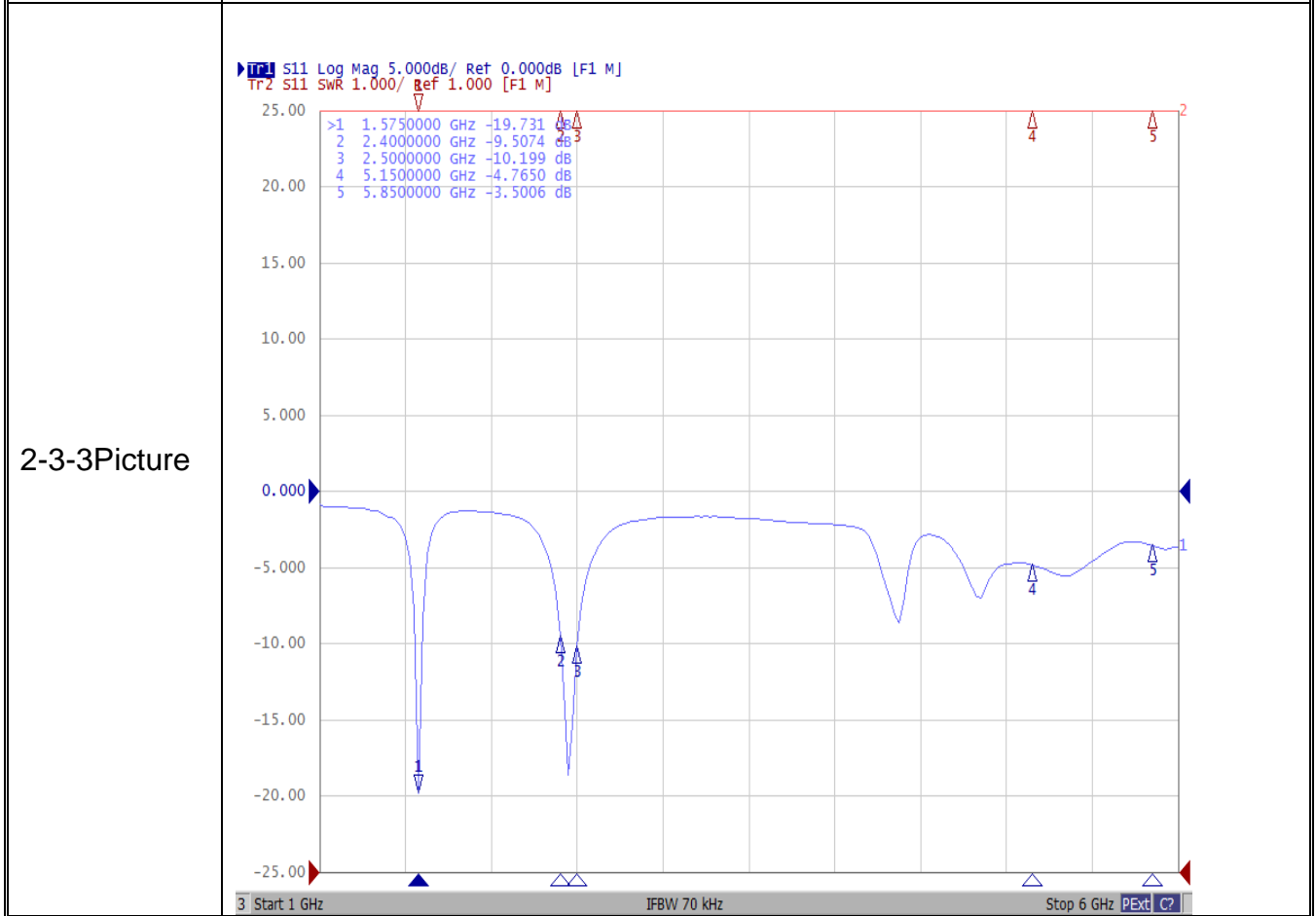


2-3. VSWR ,Efficiency ,Matching and Active Data :

2-3.1 VSWR:

Frequency Band	1575	2400	2500	5150	5950
2-3-1. Typical Value:	≤ 2	≤ 2.5	≤ 2	≤ 2	≤ 3

2-3-2 Measuring Method	<ol style="list-style-type: none"> 1. A 50Ω coaxial cable is connected to the fpcb antenna. Then this cable is connected to a network analyzer to measure the VSWR. 2. Keeping this jig away from metal at least 20 cm.
------------------------	---



UNLESS OTHER SPECIFIED TOLERANCES ON :

X = ±2 X.X = ±0.1 X.XX = ±0.05

ANGLES = ±

HOLEDIA = ±

SCALE :

UNIT : mm

DRAWN BY : 李森

CHECKED BY : 肖坤雄

DESIGNED BY : 覃佐治

APPROVED BY : 王伟

TITLE : GH6321M-BWG-ANT-V2.0 Specification

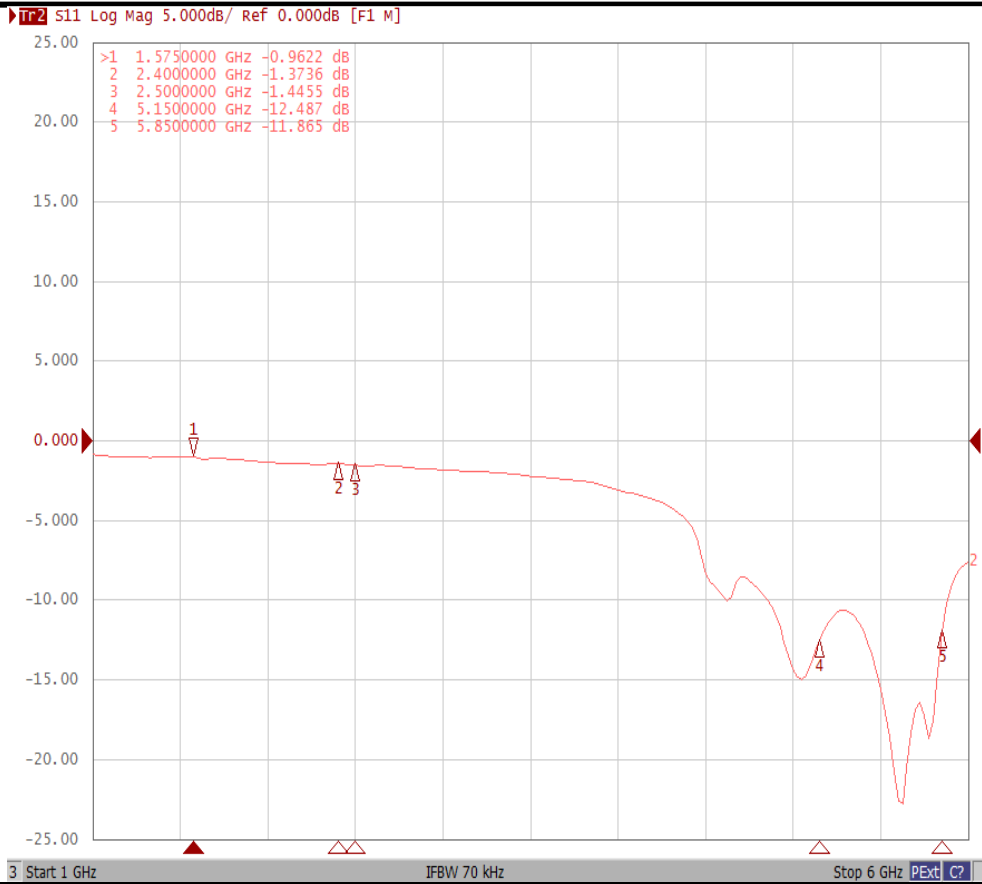
DOCUMENT NO.

PAGE REV.
A0



深圳市可信华成通信科技有限公司
SHENZHEN CITY KEXIN HUACHENG COMMUNICATION TECHNOLOGY CO.,LTD

THIS DRAWINGS AND SPECIFICATIONS ARE THE PROPERTY OF KEXIN HUACHENG COMMUNICATION TECHNOLOGY CO.,LTD.AND SHALL NOT BE REPRODUCED OR USED AS THE BASIS FOR THE MANUFACTURE OR SALE OF APPARATUS OR DEVICES WITHOUT PERMISSION



2-4. Measure and Chamber

2-4-1 Measure method

1. Using a low loss coaxial cable to link a standard handset jig
2. Fixed this handset jig on chamber's rotator plane
3. Linking jig into network analyzer port and using a probing horn antenna to collect data.
4. Using another standard gain horn antenna to calibrated those data

UNLESS OTHER SPECIFIED TOLERANCES ON :

X = ±2 X.X = ±0.1 X.XX = ±0.05

ANGLES = ±

HOLEDIA = ±

SCALE :

UNIT : mm

DRAWN BY : 李森

CHECKED BY : 肖坤雄

DESIGNED BY : 覃佐治

APPROVED BY : 王伟

TITLE : GH6321M-BWG-ANT-V2.0Specification

DOCUMENT
NO.

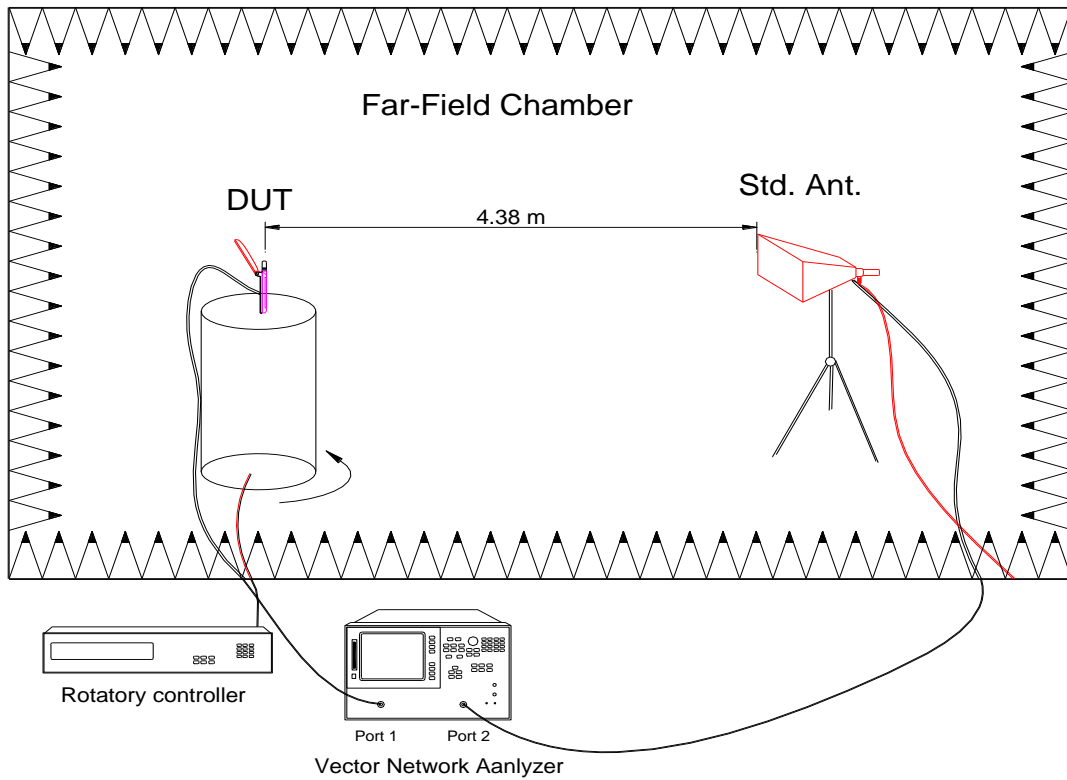
PAGE REV.
A0

THIS DRAWINGS AND SPECIFICATIONS ARE THE PROPERTY OF KEXIN HUACHENG COMMUNICATION TECHNOLOGY CO.,LTD.AND SHALL NOT BE REPRODUCED OR USED AS THE BASIS FOR THE MANUFACTURE OR SALE OF APPARATUS OR DEVICES WITHOUT PERMISSION



深圳市可信华成通信科技有限公司
SHENZHEN CITY KEXIN HUACHENG COMMUNICATION TECHNOLOGY CO.,LTD

2-4-2 Chamber definition



1. An anechoic chamber (8mx4mx3.5m) which satisfied far-field condition was applied to avoid multi-path effect
2. The quiet room region is 40cmx40cmx40cm at the center of rotator
3. The distance between DUT and standard antenna is 4.38 m
4. Probing antenna (9120D horn antenna) and standard gain horn antenna (BBHA9120 LPF 700MHz ~6GHz)

2-4-3 Antenna OTA

2-4-4 Antenna Efficiency

UNLESS OTHER SPECIFIED TOLERANCES ON :

X = ±2 X.X = ±0.1 X.XX = ±0.05

ANGLES = ±

HOLEDIA = ±

SCALE :

UNIT : mm

DRAWN BY : 李森

CHECKED BY : 肖坤雄

DESIGNED BY : 覃佐治

APPROVED BY : 王伟

TITLE : GH6321M-BWG-ANT-V2.0Specification

DOCUMENT
NO.

PAGE REV.
A0



深圳市可信华成通信科技有限公司
SHENZHEN CITY KEXIN HUACHENG COMMUNICATION TECHNOLOGY CO.,LTD

THIS DRAWINGS AND SPECIFICATIONS ARE THE PROPERTY OF KEXIN HUACHENG COMMUNICATION TECHNOLOGY CO.,LTD.AND SHALL NOT BE REPRODUCED OR USED AS THE BASIS FOR THE MANUFACTURE OR SALE OF APPARATUS OR DEVICES WITHOUT PERMISSION

GPS				2.4G WIFI				5G WIFI			
Frequency (MHz)	Gain (dBi)	Efficiency (dB)	Efficiency (%)	Frequency (MHz)	Gain (dBi)	Efficiency (dB)	Efficiency (%)	Frequency (MHz)	Gain (dBi)	Efficiency (dB)	Efficiency (%)
1550	-0.83	-7.98	16%	2400	0.63	-6.10	25%	5150	0.02	-6.24	24%
1555	-0.63	-7.69	17%	2410	1.02	-5.95	25%	5200	0.27	-5.97	25%
1560	-0.38	-7.35	18%	2420	1.76	-5.45	29%	5250	0.09	-6.02	25%
1565	-0.03	-6.79	21%	2430	1.68	-5.19	30%	5300	-0.23	-6.07	25%
1570	-0.17	-6.77	21%	2440	1.60	-5.14	31%	5350	-0.79	-6.44	23%
1575	-0.24	-6.47	23%	2450	2.04	-4.81	33%	5400	-1.44	-7.07	20%
1580	0.27	-5.86	26%	2460	1.90	-4.63	34%	5450	-1.69	-6.93	20%
1585	0.33	-5.76	27%	2470	1.57	-4.69	34%	5500	-2.35	-7.51	18%
1590	0.40	-5.50	28%	2480	1.68	-4.60	35%	5550	-2.17	-8.13	15%
1595	0.60	-5.02	31%	2490	1.46	-4.54	35%	5600	-2.32	-8.40	14%
1600	0.73	-4.81	33%	2500	1.07	-4.71	34%	5650	-2.69	-8.90	13%
								5700	-3.04	-9.24	12%
								5750	-0.57	-8.69	14%
								5800	-0.44	-8.58	14%
								5850	-0.83	-9.63	11%

3. 3D Radiation Pattern

GPS [1575MHz] BT/WiFi

UNLESS OTHER SPECIFIED TOLERANCES ON :

X = ±2 X.X = ±0.1 X.XX = ±0.05

ANGLES = ±

HOLEDIA = ±



深圳市可信华成通信科技有限公司
SHENZHEN CITY KEXIN HUACHENG COMMUNICATION TECHNOLOGY CO.,LTD

SCALE :

UNIT : mm

DRAWN BY : 李森

CHECKED BY : 肖坤雄

DESIGNED BY : 覃佐治

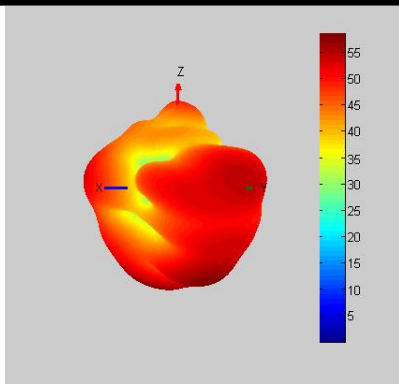
APPROVED BY : 王伟

THIS DRAWINGS AND SPECIFICATIONS ARE THE PROPERTY OF KEXIN HUACHENG COMMUNICATION TECHNOLOGY CO.,LTD.AND SHALL NOT BE REPRODUCED OR USED AS THE BASIS FOR THE MANUFACTURE OR SALE OF APPARATUS OR DEVICES WITHOUT PERMISSION

TITLE : GH6321M-BWG-ANT-V2.0Specification

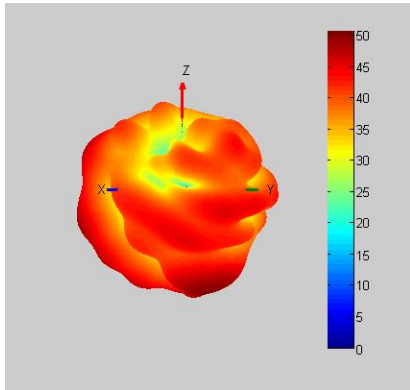
DOCUMENT NO.

PAGE REV.
A0

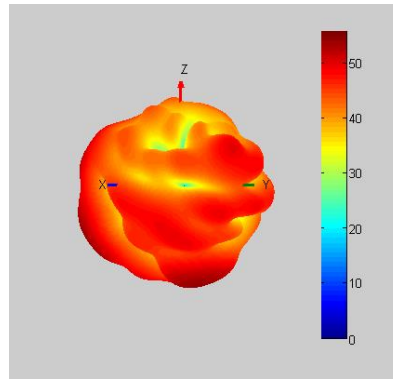


WiFi 2.4GHz C0 [2400MHz]

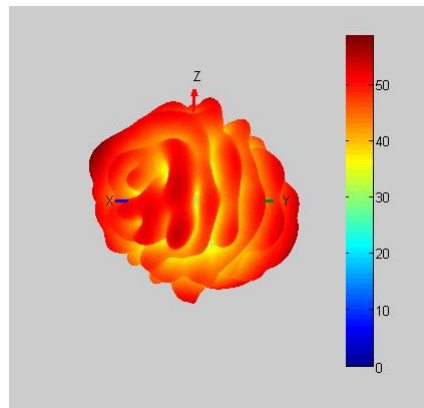
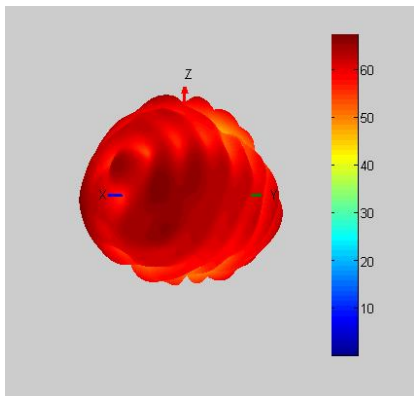
WiFi 2.4GHz C0 [2500MHz]



WiFi 5GHz [5150MHz]



WiFi 5GHz [5850MHz]



4. Antenna Dimensions:

UNLESS OTHER SPECIFIED TOLERANCES ON :

X = ±2 X.X = ±0.1 X.XX = ±0.05

ANGLES = ±

HOLEDIA = ±

SCALE :

UNIT : mm

DRAWN BY : 李森

CHECKED BY : 肖坤雄

DESIGNED BY : 覃佐治

APPROVED BY : 王伟

TITLE : GH6321M-BWG-ANT-V2.0Specification

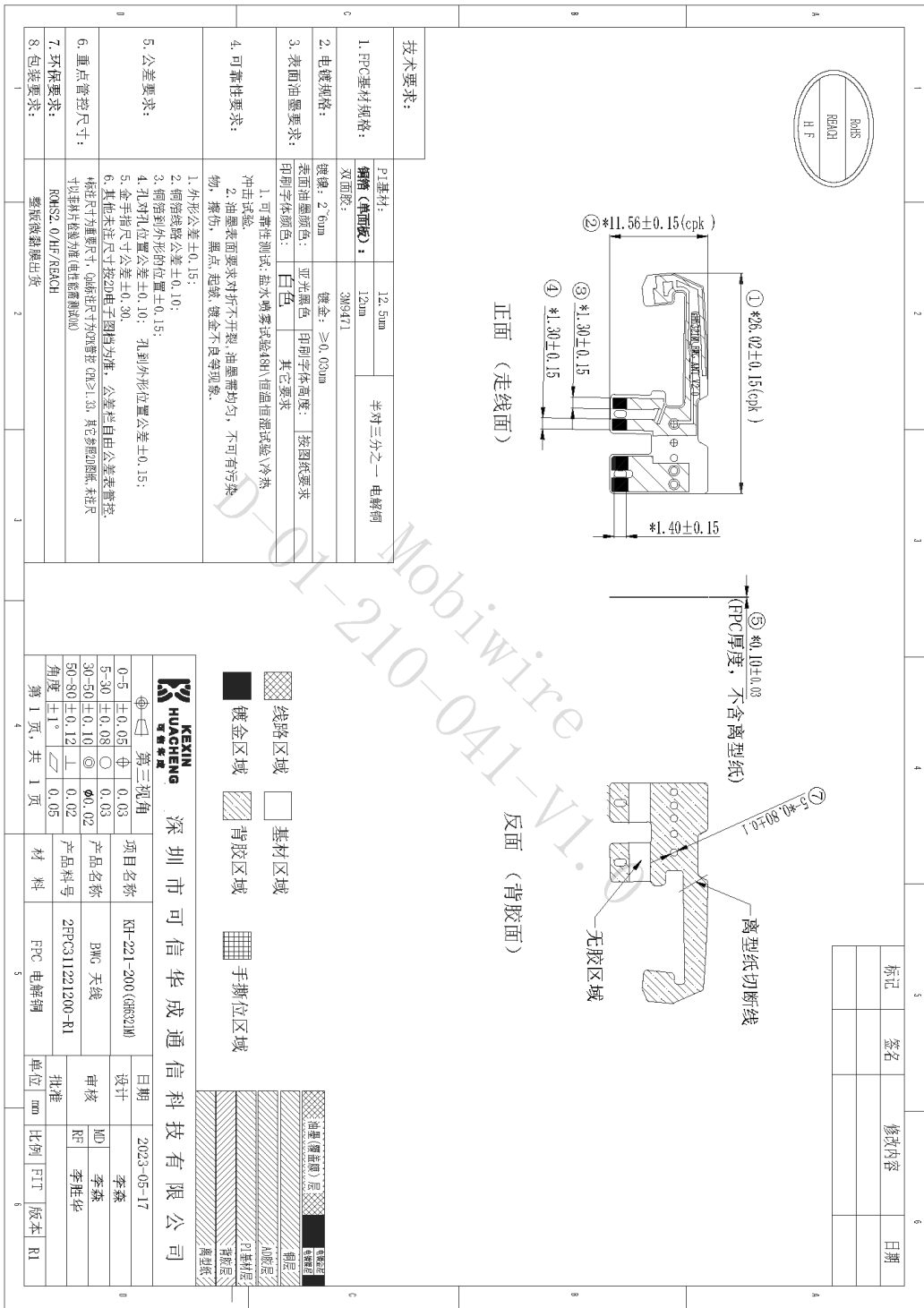


深圳市可信华成通信科技有限公司
SHENZHEN CITY KEXIN HUACHENG COMMUNICATION TECHNOLOGY CO.,LTD

THIS DRAWINGS AND SPECIFICATIONS ARE THE PROPERTY OF KEXIN HUACHENG COMMUNICATION TECHNOLOGY CO.,LTD.AND SHALL NOT BE REPRODUCED OR USED AS THE BASIS FOR THE MANUFACTURE OR SALE OF APPARATUS OR DEVICES WITHOUT PERMISSION

DOCUMENT NO.

PAGE REV.
A0



UNLESS OTHER SPECIFIED TOLERANCES ON :

X = ±2 X.X = ±0.1 X.XX = ±0.05

ANGLES = ± HOLEDIA = ±

SCALE : UNIT : mm

DRAWN BY : 李森 CHECKED BY : 肖坤雄

DESIGNED BY : 覃佐治 APPROVED BY : 王伟

TITLE : GH6321M-BWG-ANT-V2.0 Specification



深圳市可信华成通信科技有限公司

SHENZHEN CITY KEXIN HUACHENG COMMUNICATION TECHNOLOGY CO.,LTD

THIS DRAWINGS AND SPECIFICATIONS ARE THE PROPERTY OF KEXIN HUACHENG COMMUNICATION TECHNOLOGY CO.,LTD.AND SHALL NOT BE REPRODUCED OR USED AS THE BASIS FOR THE MANUFACTURE OR SALE OF APPARATUS OR DEVICES WITHOUT PERMISSION

DOCUMENT NO.

PAGE REV.
A0