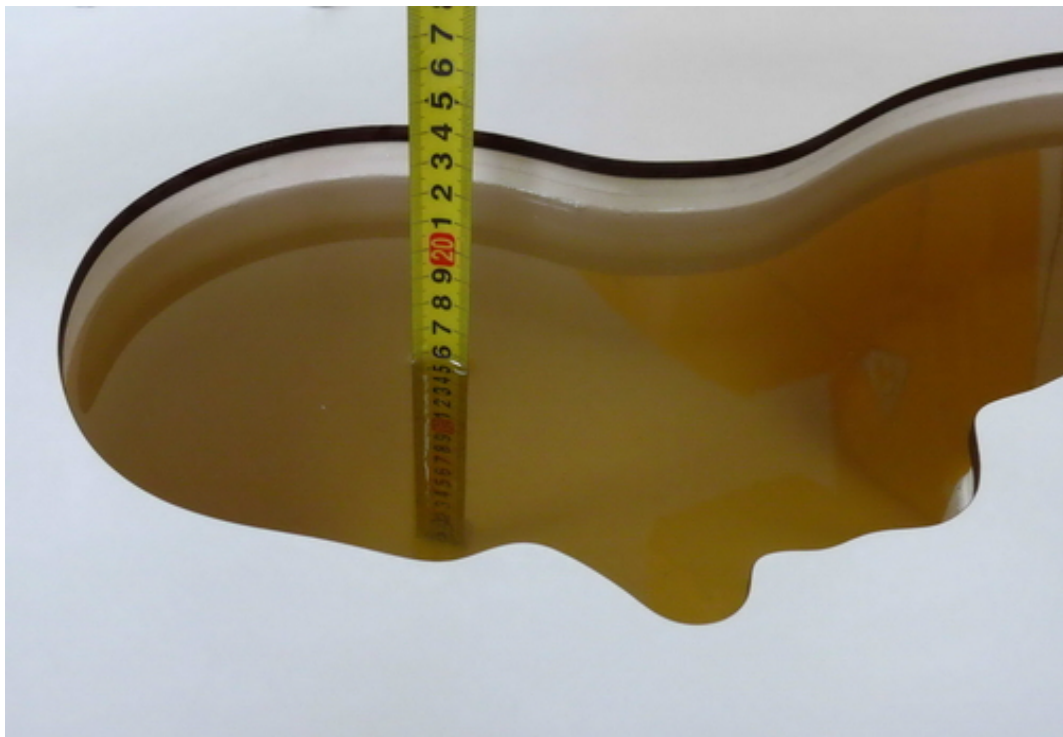
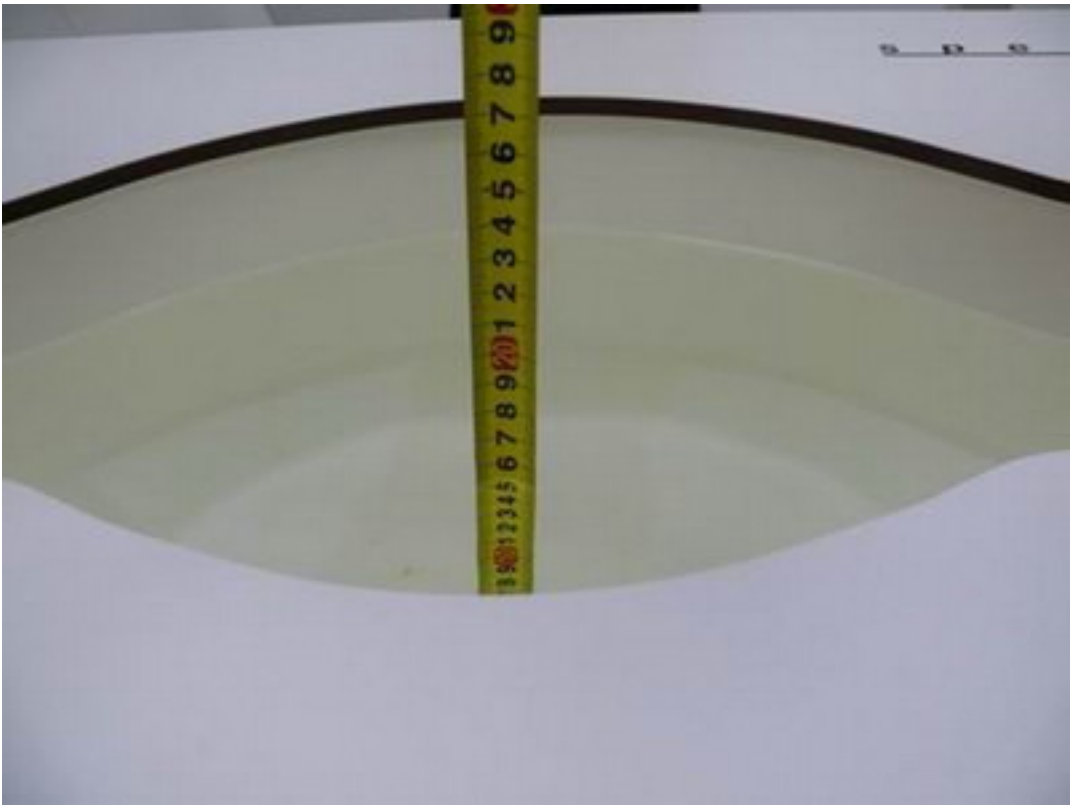




Photograph of the depth in the flat Phantom (835MHz)



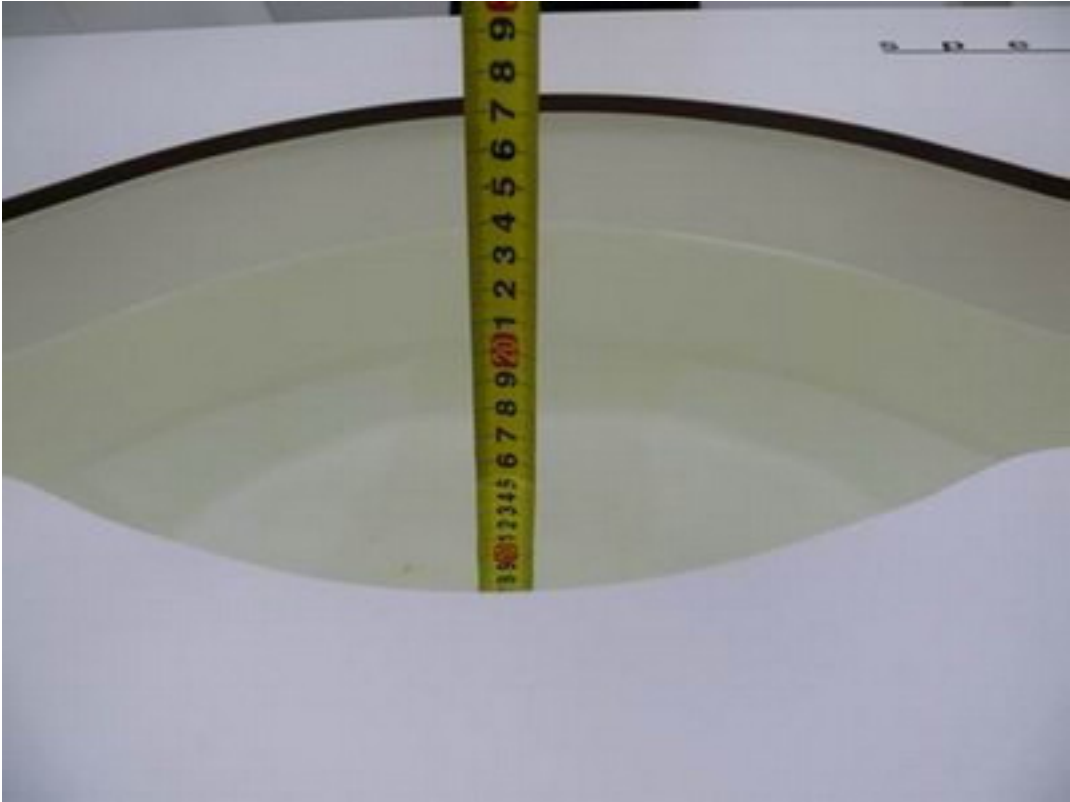
Photograph of the depth in the head Phantom (835MHz)



Liquid depth in the flat Phantom (1900 MHz, 15.2cm depth)



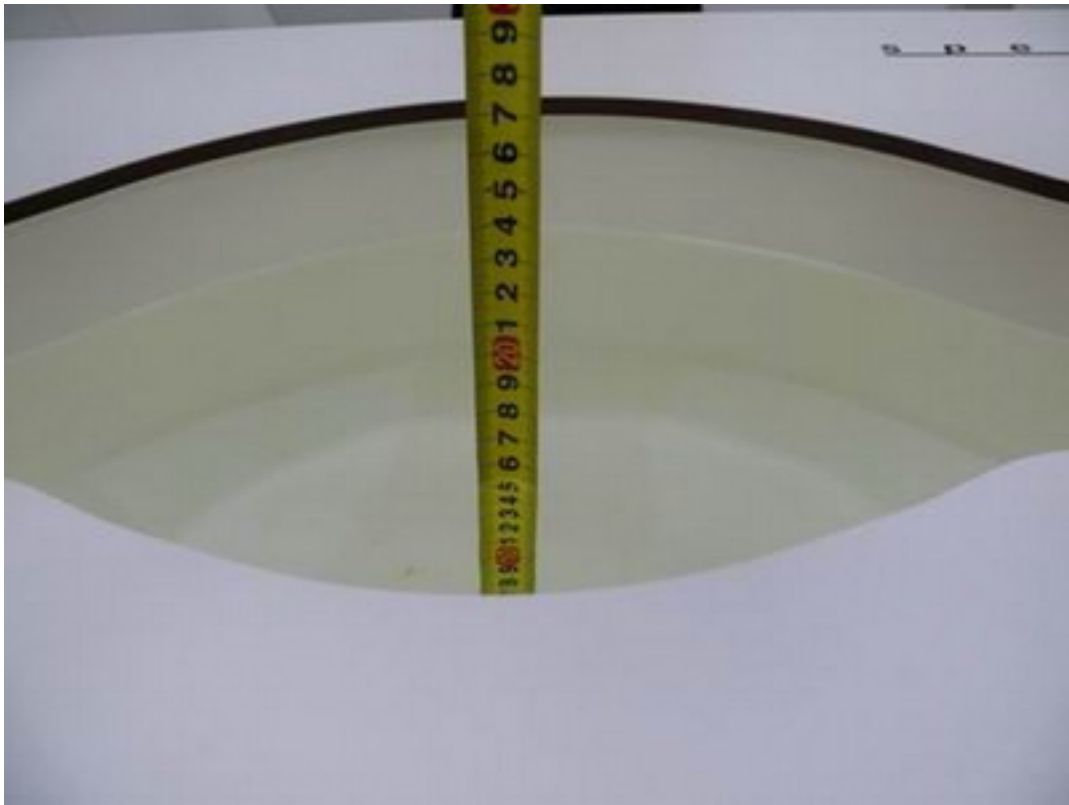
Liquid depth in the head Phantom (1900 MHz, 15.3cm depth)



Liquid depth in the flat Phantom (2450 MHz, 15.3cm depth)



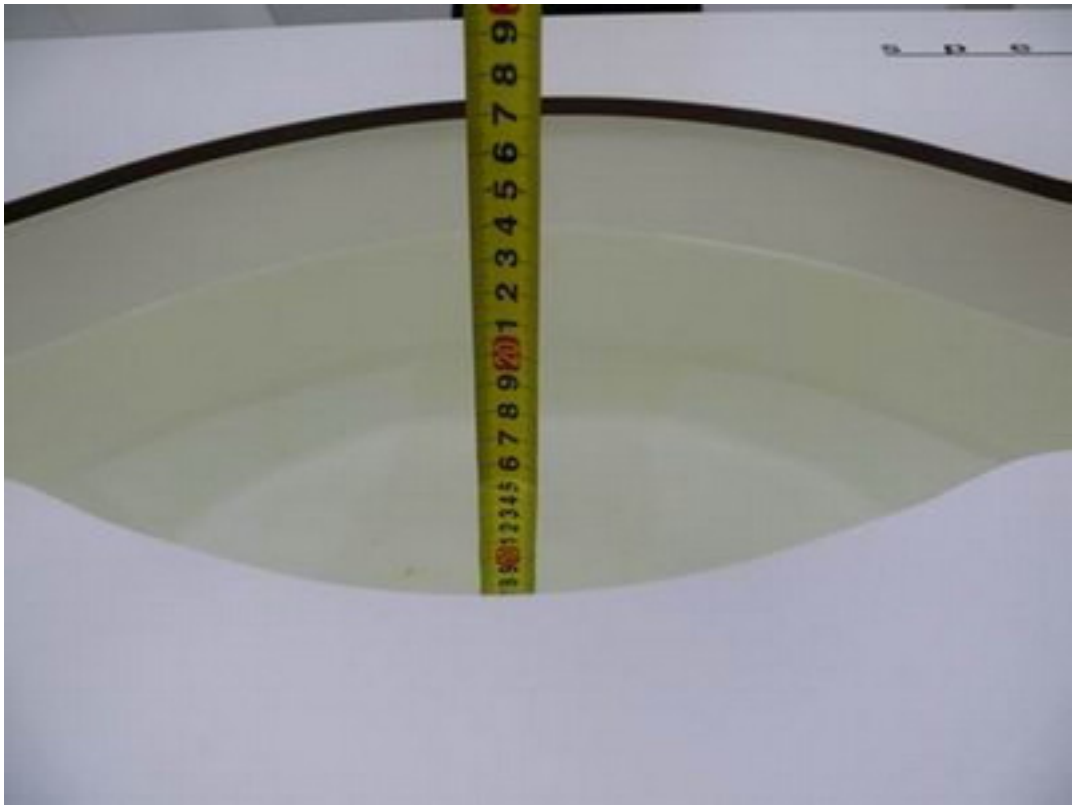
Liquid depth in the head Phantom (2450 MHz, 15.4cm depth)



Liquid depth in the flat Phantom (2600 MHz, 15.3cm depth)



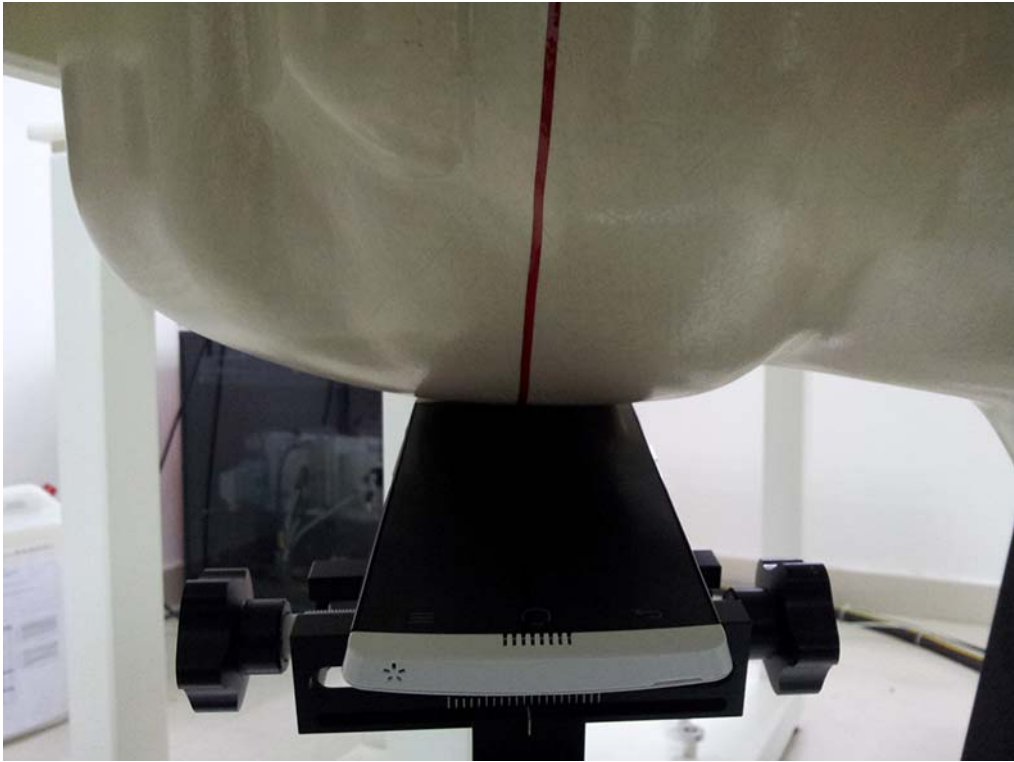
Liquid depth in the head Phantom (2600 MHz, 15.4cm depth)



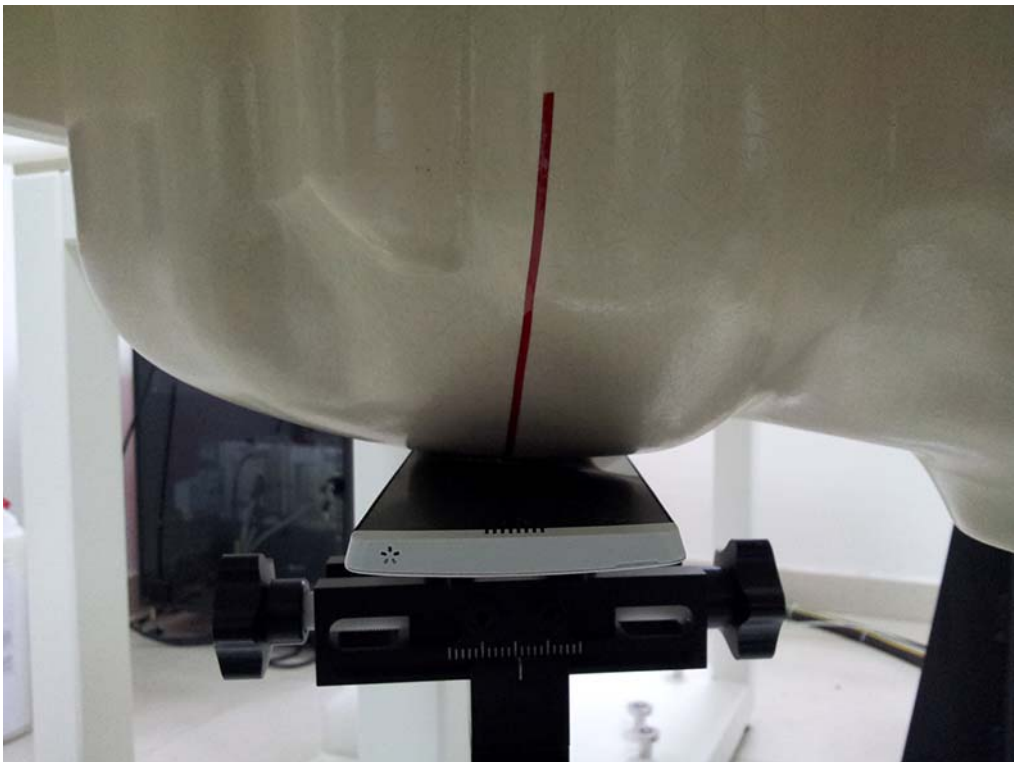
Liquid depth in the flat Phantom (1750 MHz, 15.3cm depth)



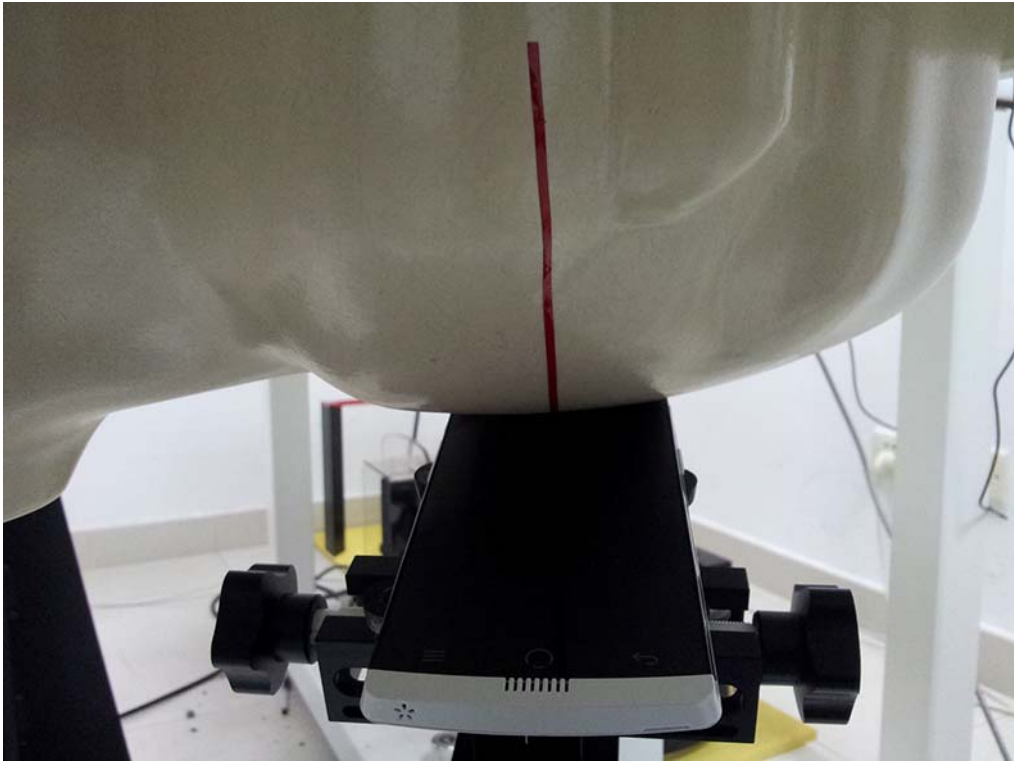
Liquid depth in the head Phantom (1750 MHz, 15.4cm depth)



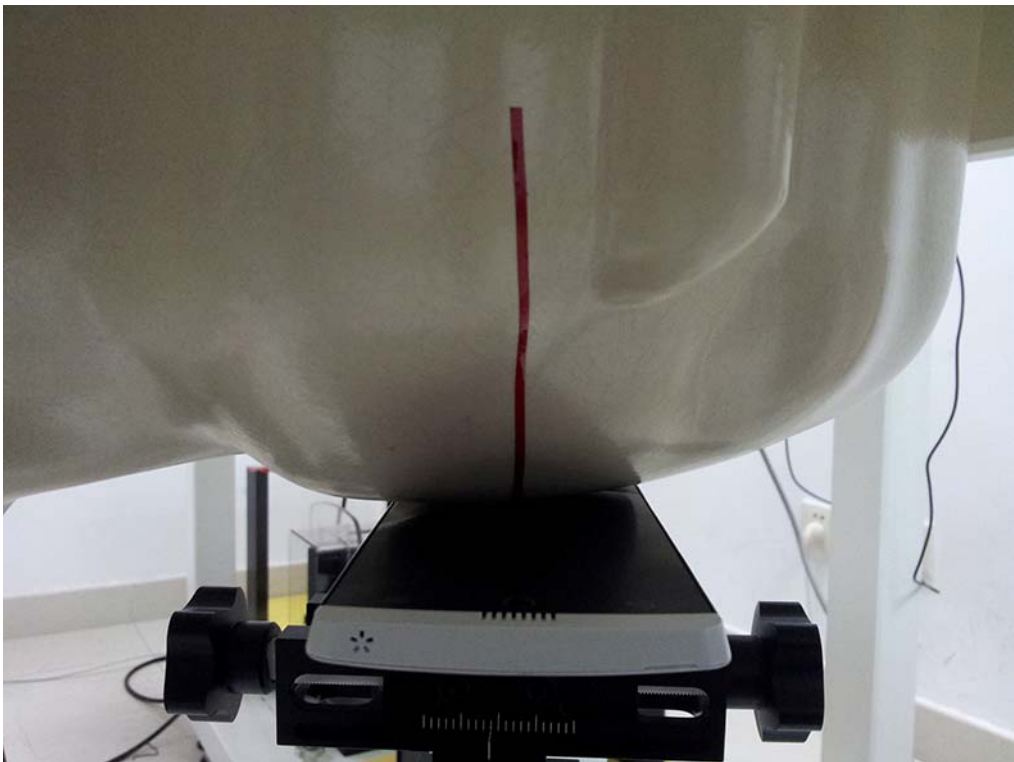
Right Head Tilt Setup Photo



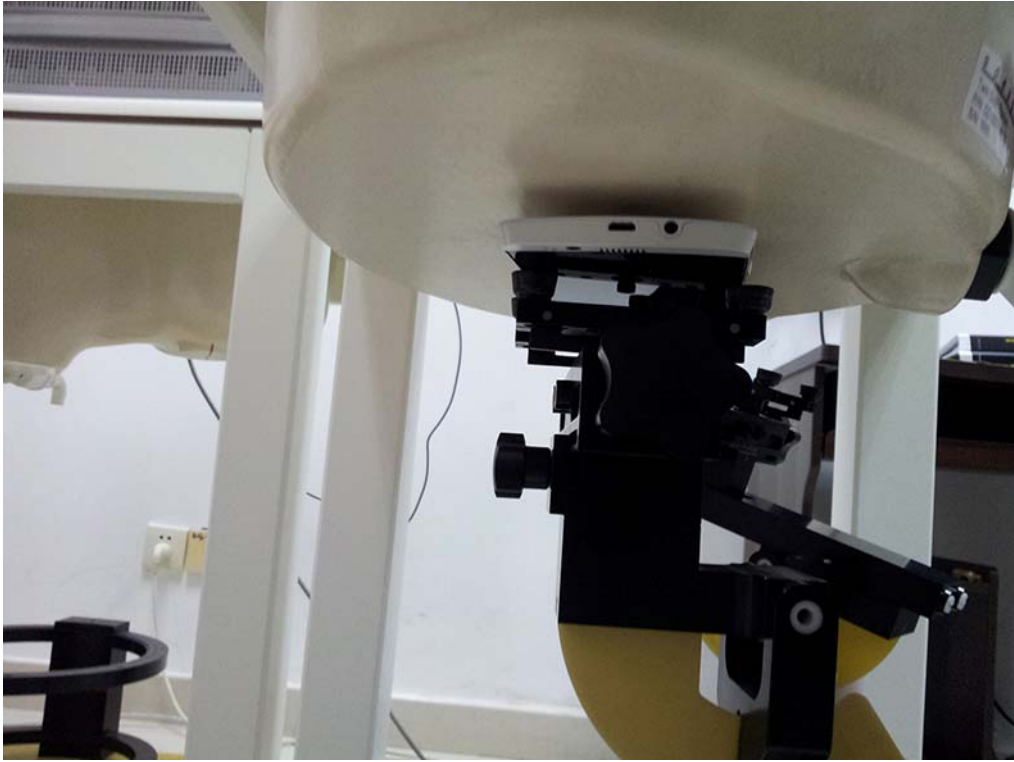
Right Head Touch Setup Photo



Left Head Tilt Setup Photo



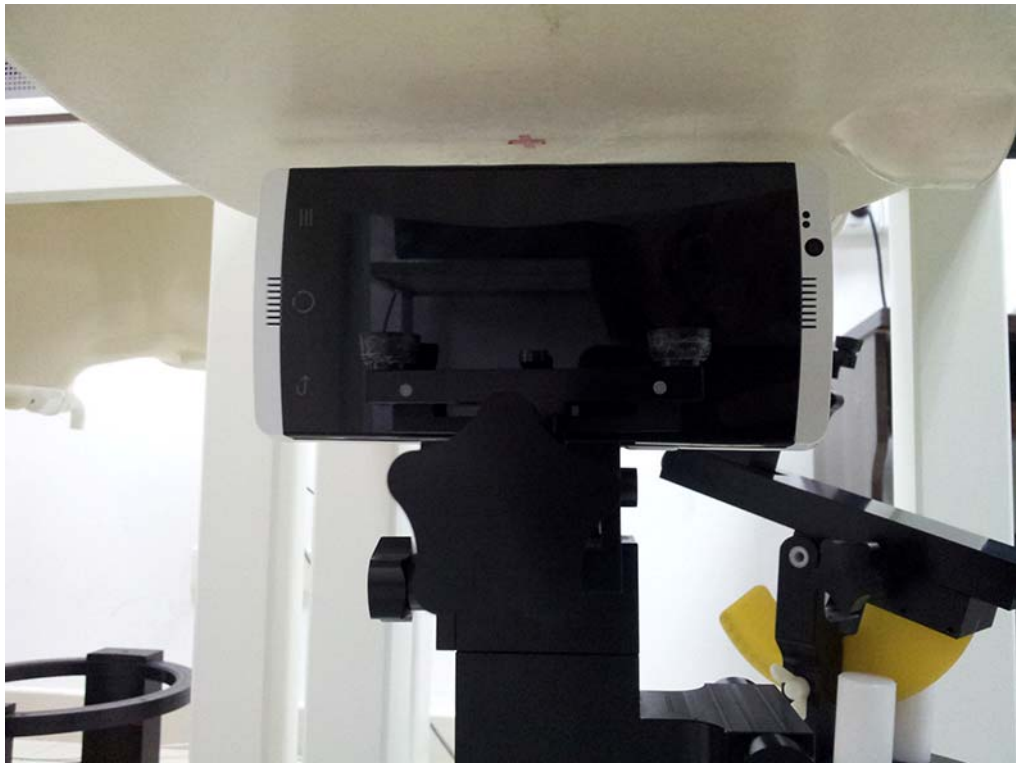
Left Head Touch Setup Photo



10mm Rear Setup Photo



10mm Front Side Setup Photo



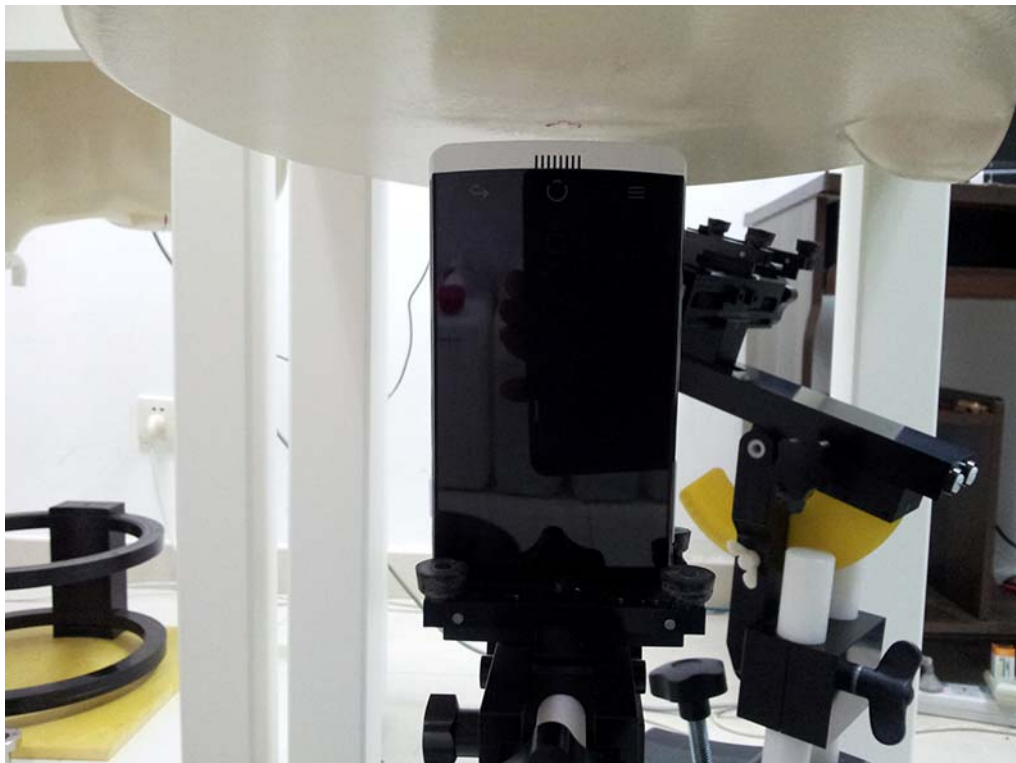
10mm Left Edge Setup Photo



10mm Rightt Edge Setup Photo



10mm Top Edge Setup Photo



10mm Bottom Edge Setup Photo