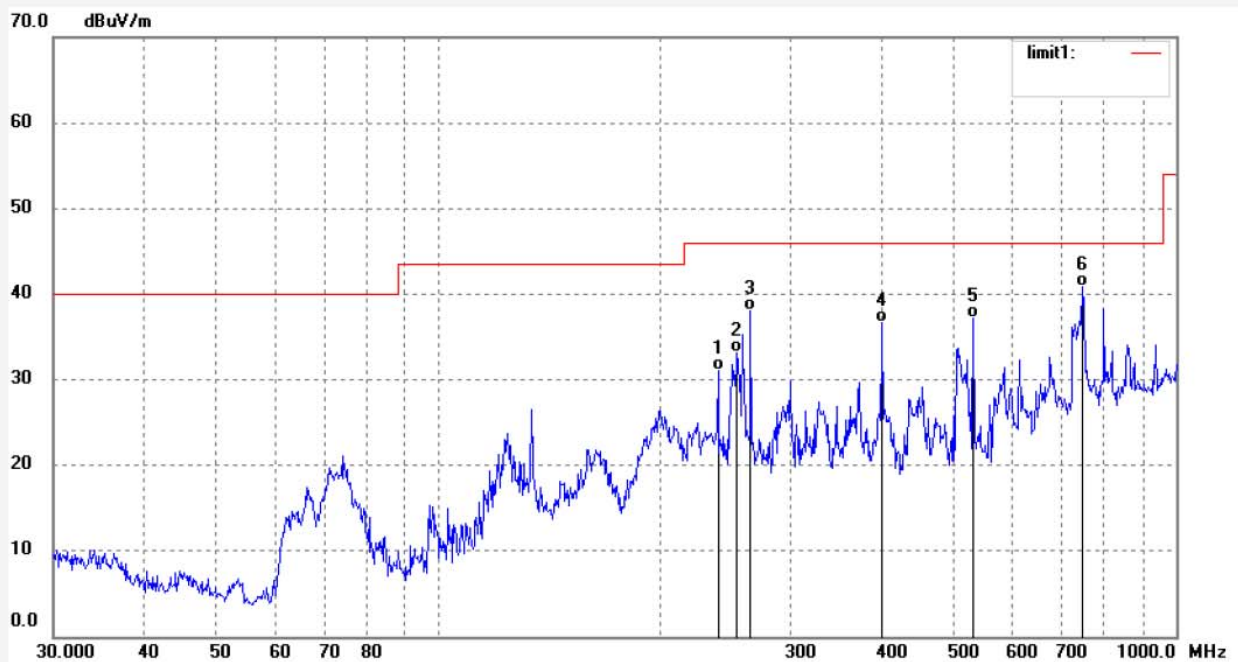


Job No.: DING11 #352
 Standard: FCC Class B 3M Radiated
 Test item: Radiation Test
 Temp.(C)/Hum.(%) 25 C / 55 %
 EUT: LED touch display
 Mode: HDMI IN
 Model: LE-55ME0E
 Manufacturer: PRIMA

Polarization: Horizontal
 Power Source: AC 120V/60Hz
 Date: 16/11/30/
 Time: 9/10/18
 Engineer Signature: DING
 Distance: 3m

Note: Report NO:ATE20162484

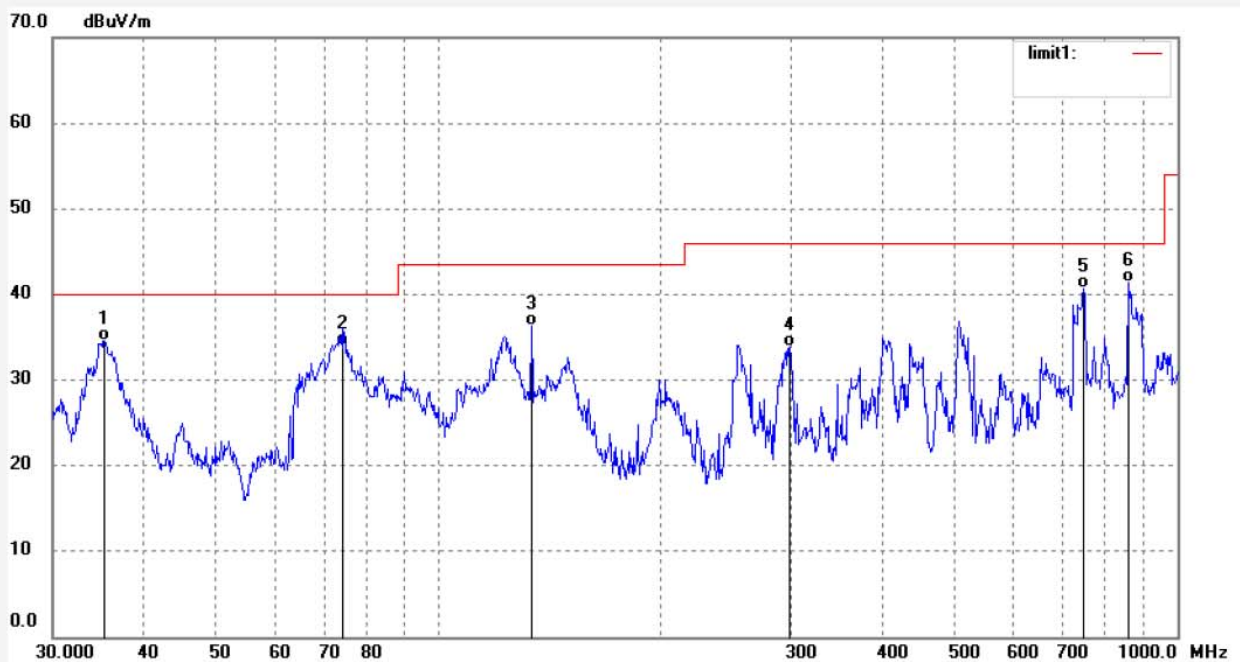


No.	Freq. (MHz)	Reading (dBuV/m)	Factor (dB)	Result (dBuV/m)	Limit (dBuV/m)	Margin (dB)	Detector	Height (cm)	Degree (deg.)	Remark
1	239.3020	49.23	-18.18	31.05	46.00	-14.95	QP			
2	254.0312	51.11	-17.91	33.20	46.00	-12.80	QP			
3	264.9709	55.30	-17.25	38.05	46.00	-7.95	QP			
4	399.6981	49.64	-13.01	36.63	46.00	-9.37	QP			
5	531.2910	47.40	-10.15	37.25	46.00	-8.75	QP			
6	747.0467	46.06	-5.21	40.85	46.00	-5.15	QP			

Job No.: DING11 #353
 Standard: FCC Class B 3M Radiated
 Test item: Radiation Test
 Temp.(C)/Hum.(%) 25 C / 55 %
 EUT: LED touch display
 Mode: HDMI IN
 Model: LE-55ME0E
 Manufacturer: PRIMA

Polarization: Vertical
 Power Source: AC 120V/60Hz
 Date: 16/11/30/
 Time: 9/12/37
 Engineer Signature: DING
 Distance: 3m

Note: Report NO:ATE20162484

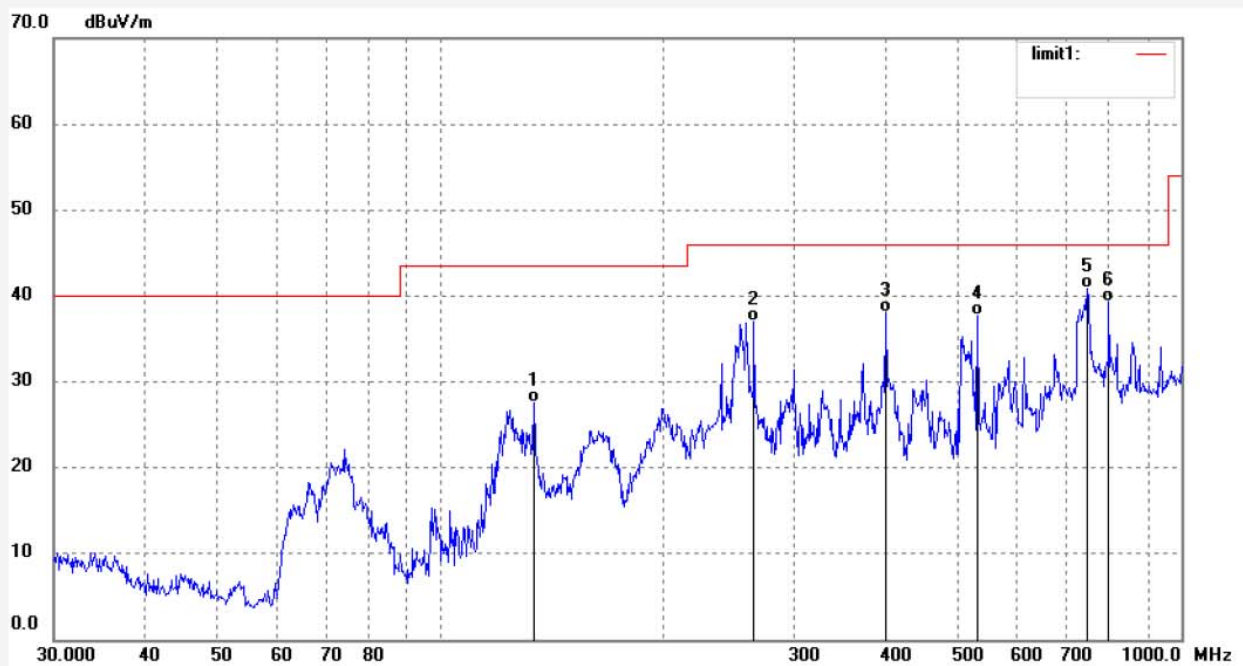


No.	Freq. (MHz)	Reading (dBuV/m)	Factor (dB)	Result (dBuV/m)	Limit (dBuV/m)	Margin (dB)	Detector	Height (cm)	Degree (deg.)	Remark
1	35.2625	50.63	-16.05	34.58	40.00	-5.42	QP			
2	74.0092	56.29	-22.26	34.03	40.00	-5.97	QP			
3	133.5491	58.52	-22.20	36.32	43.50	-7.18	QP			
4	298.5932	49.57	-15.78	33.79	46.00	-12.21	QP			
5	747.0465	45.93	-5.21	40.72	46.00	-5.28	QP			
6	859.7753	44.43	-3.07	41.36	46.00	-4.64	QP			

Job No.: DING11 #359
 Standard: FCC Class B 3M Radiated
 Test item: Radiation Test
 Temp.(C)/Hum.(%) 25 C / 55 %
 EUT: LED touch display
 Mode: USB PLAYING
 Model: LE-55ME0E
 Manufacturer: PRIMA

Polarization: Horizontal
 Power Source: AC 120V/60Hz
 Date: 16/11/30/
 Time: 9/26/35
 Engineer Signature: DING
 Distance: 3m

Note: Report NO:ATE20162484

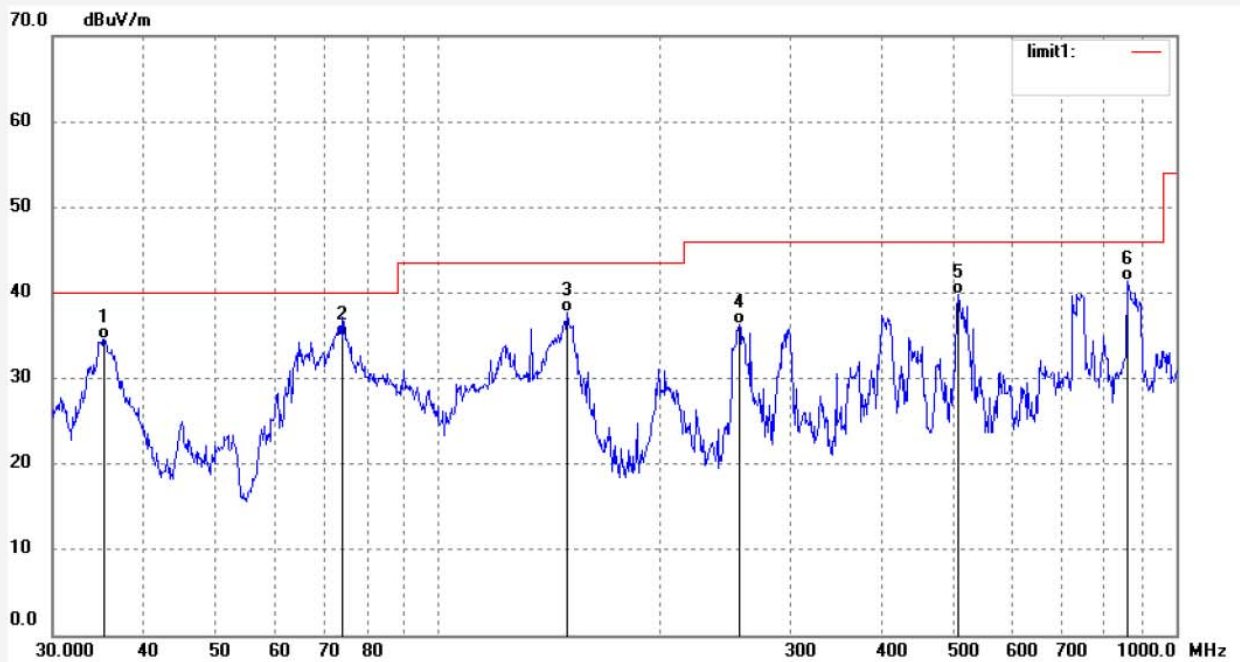


No.	Freq. (MHz)	Reading (dBuV/m)	Factor (dB)	Result (dBuV/m)	Limit (dBuV/m)	Margin (dB)	Detector	Height (cm)	Degree (deg.)	Remark
1	133.5491	49.78	-22.20	27.58	43.50	-15.92	QP			
2	264.9707	54.30	-17.25	37.05	46.00	-8.95	QP			
3	399.6981	51.14	-13.01	38.13	46.00	-7.87	QP			
4	531.2910	47.90	-10.15	37.75	46.00	-8.25	QP			
5	747.0465	46.06	-5.21	40.85	46.00	-5.15	QP			
6	798.6204	43.46	-4.19	39.27	46.00	-6.73	QP			

Job No.: DING11 #358
 Standard: FCC Class B 3M Radiated
 Test item: Radiation Test
 Temp.(C)/Hum.(%) 25 C / 55 %
 EUT: LED touch display
 Mode: USB PLAYING
 Model: LE-55ME0E
 Manufacturer: PRIMA

Polarization: Vertical
 Power Source: AC 120V/60Hz
 Date: 16/11/30/
 Time: 9/24/39
 Engineer Signature: DING
 Distance: 3m

Note: Report NO:ATE20162484



No.	Freq. (MHz)	Reading (dBuV/m)	Factor (dB)	Result (dBuV/m)	Limit (dBuV/m)	Margin (dB)	Detector	Height (cm)	Degree (deg.)	Remark
1	35.2625	50.63	-16.05	34.58	40.00	-5.42	QP			
2	74.0092	57.13	-22.26	34.87	40.00	-5.13	QP			
3	149.4413	60.04	-22.35	37.69	43.50	-5.81	QP			
4	255.8223	54.04	-17.80	36.24	46.00	-9.76	QP			
5	507.5692	50.47	-10.72	39.75	46.00	-6.25	QP			
6	859.7753	44.43	-3.07	41.36	46.00	-4.64	QP			

Above 1GHz



ACCURATE TECHNOLOGY CO., LTD.

F1,Bldg,A,Changyuan New Material Port Keyuan Rd,
Science & Industry Park,Nanshan Shenzhen,P.R.China

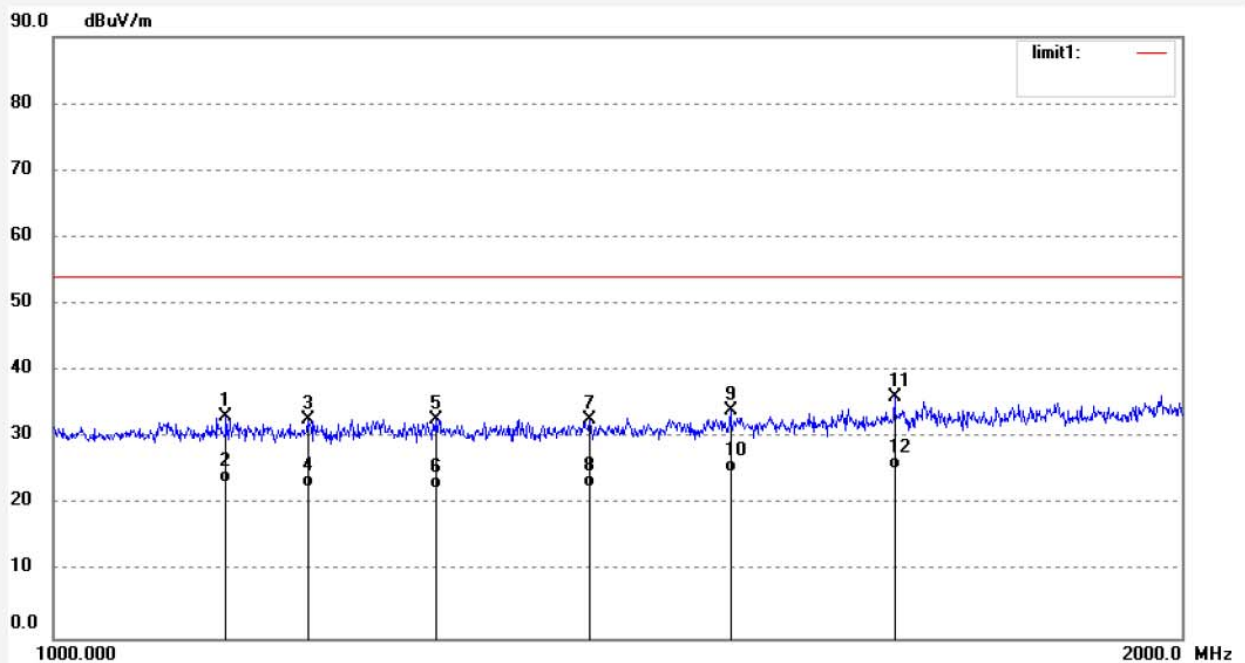
Site: 1# Chamber

Tel:+86-0755-26503290

Fax:+86-0755-26503396

Job No.: DING11 #368	Polarization: Horizontal
Standard: FCC Class B 3M Radiated	Power Source: AC 120V/60Hz
Test item: Radiation Test	Date: 16/12/09/
Temp.(C)/Hum.(%) 25 C / 55 %	Time: 9/31/14
EUT: LED touch display	Engineer Signature: DING
Mode: AV IN	Distance: 3m
Model: LE-55ME0E	
Manufacturer: PRIMA	

Note: Report NO:ATE20162484



No.	Freq. (MHz)	Reading (dBuV/m)	Factor (dB)	Result (dBuV/m)	Limit (dBuV/m)	Margin (dB)	Detector	Height (cm)	Degree (deg.)	Remark
1	1112.116	44.21	-11.00	33.21	74.00	-40.79	peak			
2	1112.116	34.18	-11.00	23.18	54.00	-30.82	AVG			
3	1169.143	43.81	-10.97	32.84	74.00	-41.16	peak			
4	1169.143	33.56	-10.97	22.59	54.00	-31.41	AVG			
5	1264.597	43.58	-10.82	32.76	74.00	-41.24	peak			
6	1264.597	33.24	-10.82	22.42	54.00	-31.58	AVG			
7	1389.870	43.31	-10.54	32.77	74.00	-41.23	peak			
8	1389.870	33.15	-10.54	22.61	54.00	-31.39	AVG			
9	1515.927	44.27	-10.13	34.14	74.00	-39.86	peak			
10	1515.927	34.92	-10.13	24.79	54.00	-29.21	AVG			
11	1676.545	45.40	-9.35	36.05	74.00	-37.95	peak			
12	1676.545	34.66	-9.35	25.31	54.00	-28.69	AVG			



ACCURATE TECHNOLOGY CO., LTD.

F1,Bldg,A,Changyuan New Material Port Keyuan Rd,
Science & Industry Park,Nanshan Shenzhen,P.R.China

Site: 1# Chamber

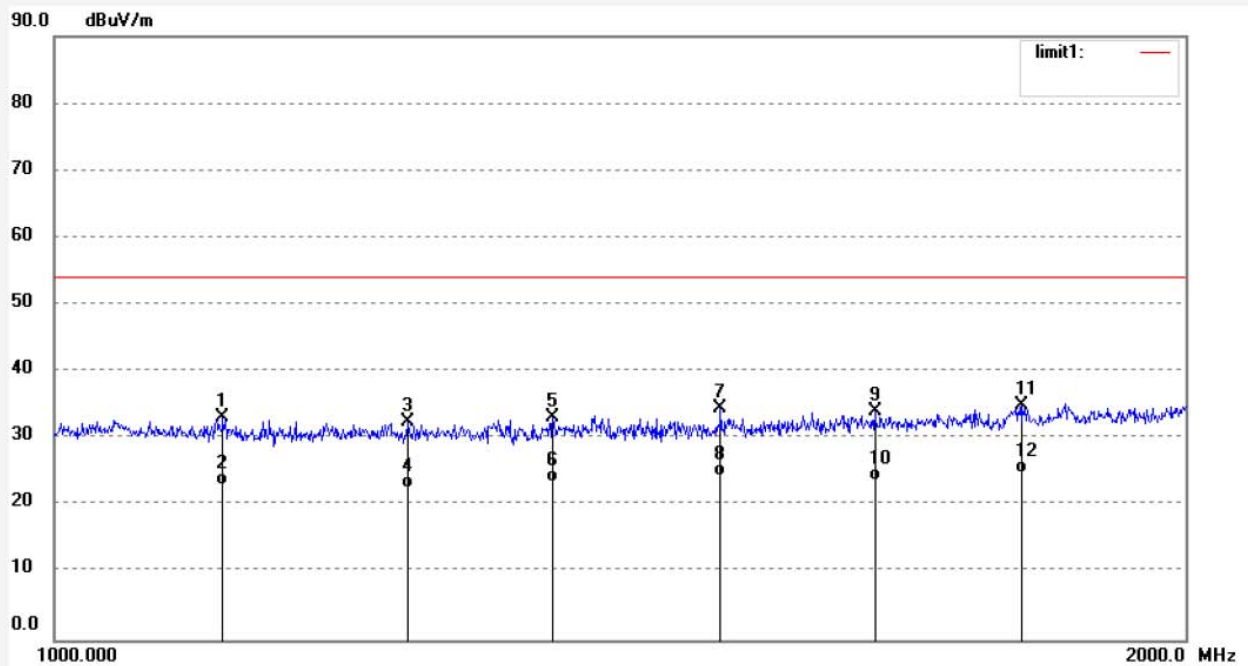
Tel:+86-0755-26503290

Fax:+86-0755-26503396

Job No.: DING11 #369
Standard: FCC Class B 3M Radiated
Test item: Radiation Test
Temp.(C)/Hum.(%) 25 C / 55 %
EUT: LED touch display
Mode: AV IN
Model: LE-55ME0E
Manufacturer: PRIMA

Polarization: Vertical
Power Source: AC 120V/60Hz
Date: 16/12/09/
Time: 9/32/36
Engineer Signature: DING
Distance: 3m

Note: Report NO:ATE20162484



No.	Freq. (MHz)	Reading (dBuV/m)	Factor (dB)	Result (dBuV/m)	Limit (dBuV/m)	Margin (dB)	Detector	Height (cm)	Degree (deg.)	Remark
1	1109.030	44.09	-11.00	33.09	74.00	-40.91	peak			
2	1109.030	34.12	-11.00	23.12	54.00	-30.88	AVG			
3	1241.966	43.38	-10.89	32.49	74.00	-41.51	peak			
4	1241.966	33.45	-10.89	22.56	54.00	-31.44	AVG			
5	1357.434	44.03	-10.73	33.30	74.00	-40.70	peak			
6	1357.434	34.21	-10.73	23.48	54.00	-30.52	AVG			
7	1504.390	44.73	-10.25	34.48	74.00	-39.52	peak			
8	1504.390	34.59	-10.25	24.34	54.00	-29.66	AVG			
9	1653.417	43.56	-9.55	34.01	74.00	-39.99	peak			
10	1653.417	33.26	-9.55	23.71	54.00	-30.29	AVG			
11	1809.651	43.82	-8.86	34.96	74.00	-39.04	peak			
12	1809.651	33.70	-8.86	24.84	54.00	-29.16	AVG			



ACCURATE TECHNOLOGY CO., LTD.

F1,Bldg,A,Changyuan New Material Port Keyuan Rd,
Science & Industry Park,Nanshan Shenzhen,P.R.China

Site: 1# Chamber

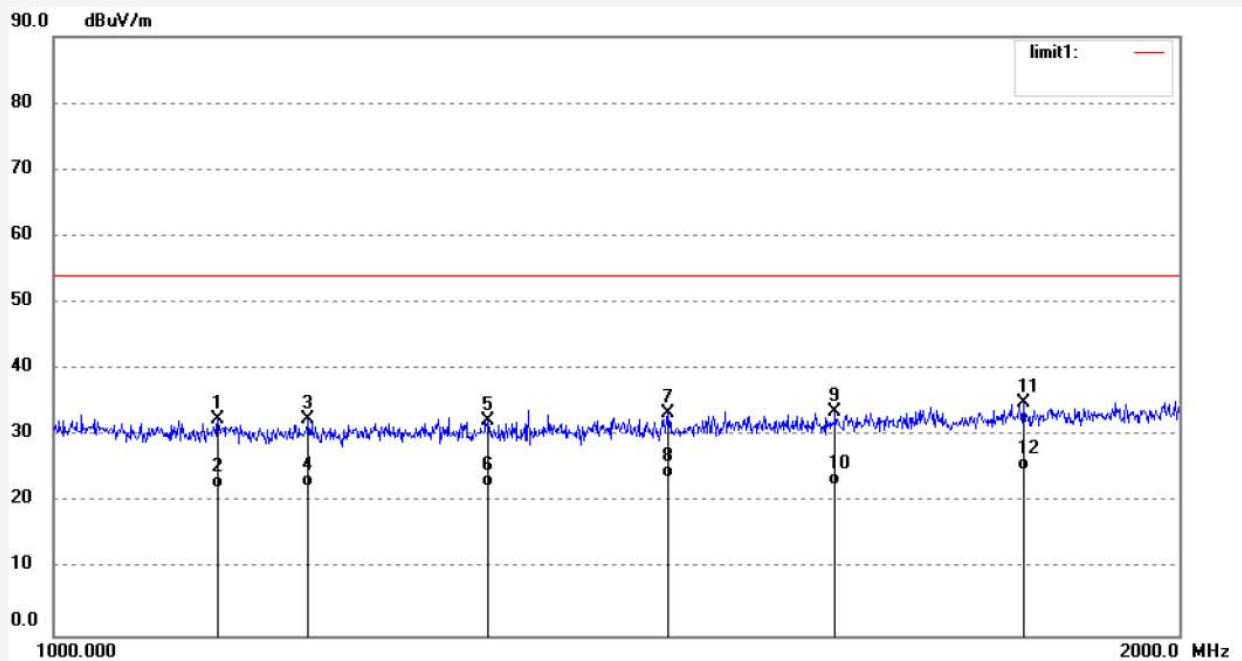
Tel:+86-0755-26503290

Fax:+86-0755-26503396

Job No.: DING11 #363
Standard: FCC Class B 3M Radiated
Test item: Radiation Test
Temp.(C)/Hum.(%) 25 C / 55 %
EUT: LED touch display
Mode: VGA IN
Model: LE-55ME0E
Manufacturer: PRIMA

Polarization: Horizontal
Power Source: AC 120V/60Hz
Date: 16/12/09/
Time: 9/21/56
Engineer Signature: DING
Distance: 3m

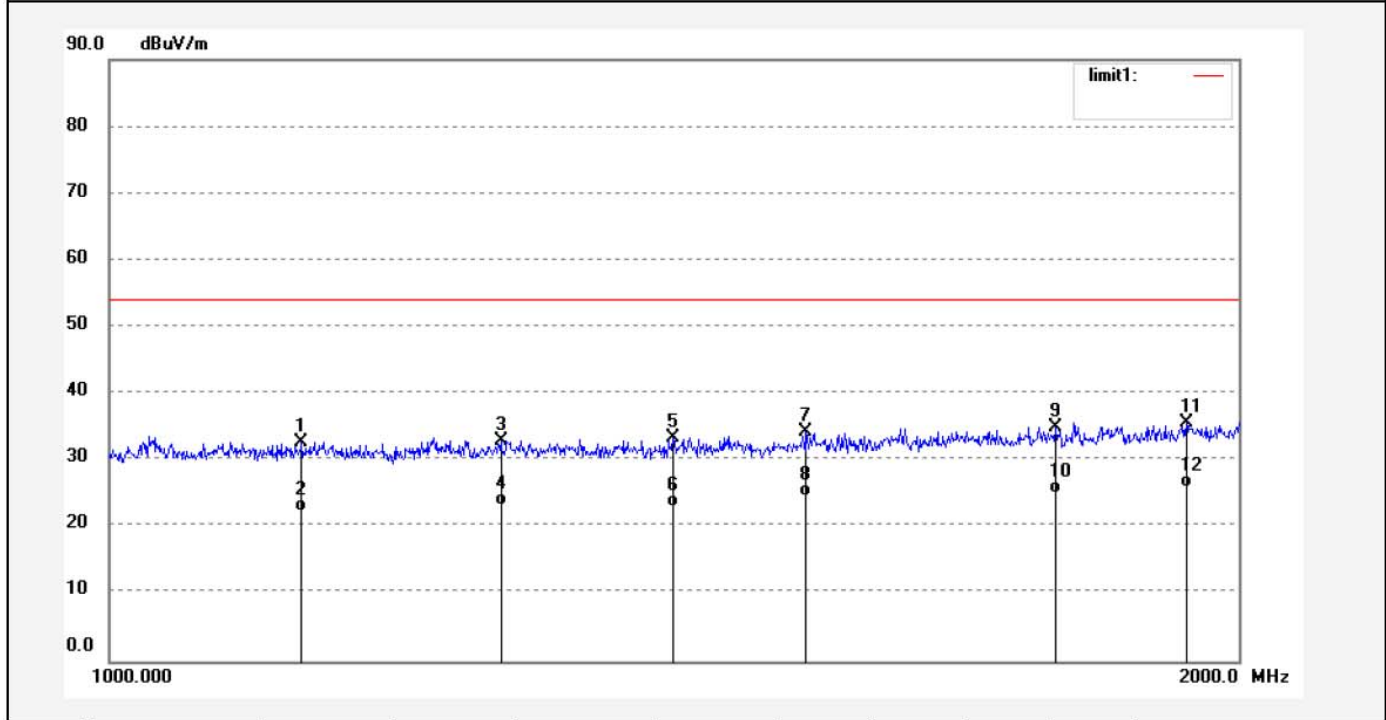
Note: Report NO:ATE20162484



No.	Freq. (MHz)	Reading (dBuV/m)	Factor (dB)	Result (dBuV/m)	Limit (dBuV/m)	Margin (dB)	Detector	Height (cm)	Degree (deg.)	Remark
1	1106.722	43.42	-11.01	32.41	74.00	-41.59	peak			
2	1106.722	33.16	-11.01	22.15	54.00	-31.85	AVG			
3	1169.955	43.50	-10.97	32.53	74.00	-41.47	peak			
4	1169.955	33.47	-10.97	22.50	54.00	-31.50	AVG			
5	1306.558	43.12	-10.76	32.36	74.00	-41.64	peak			
6	1306.558	33.23	-10.76	22.47	54.00	-31.53	AVG			
7	1460.125	43.71	-10.37	33.34	74.00	-40.66	peak			
8	1460.125	34.03	-10.37	23.66	54.00	-30.34	AVG			
9	1618.199	43.47	-9.76	33.71	74.00	-40.29	peak			
10	1618.199	32.48	-9.76	22.72	54.00	-31.28	AVG			
11	1817.208	43.74	-8.80	34.94	74.00	-39.06	peak			
12	1817.208	33.69	-8.80	24.89	54.00	-29.11	AVG			

Job No.: DING11 #362	Polarization: Vertical
Standard: FCC Class B 3M Radiated	Power Source: AC 120V/60Hz
Test item: Radiation Test	Date: 16/12/09/
Temp.(C)/Hum.(%) 25 C / 55 %	Time: 9/20/11
EUT: LED touch display	Engineer Signature: DING
Mode: VGA IN	Distance: 3m
Model: LE-55ME0E	
Manufacturer: PRIMA	

Note: Report NO:ATE20162484

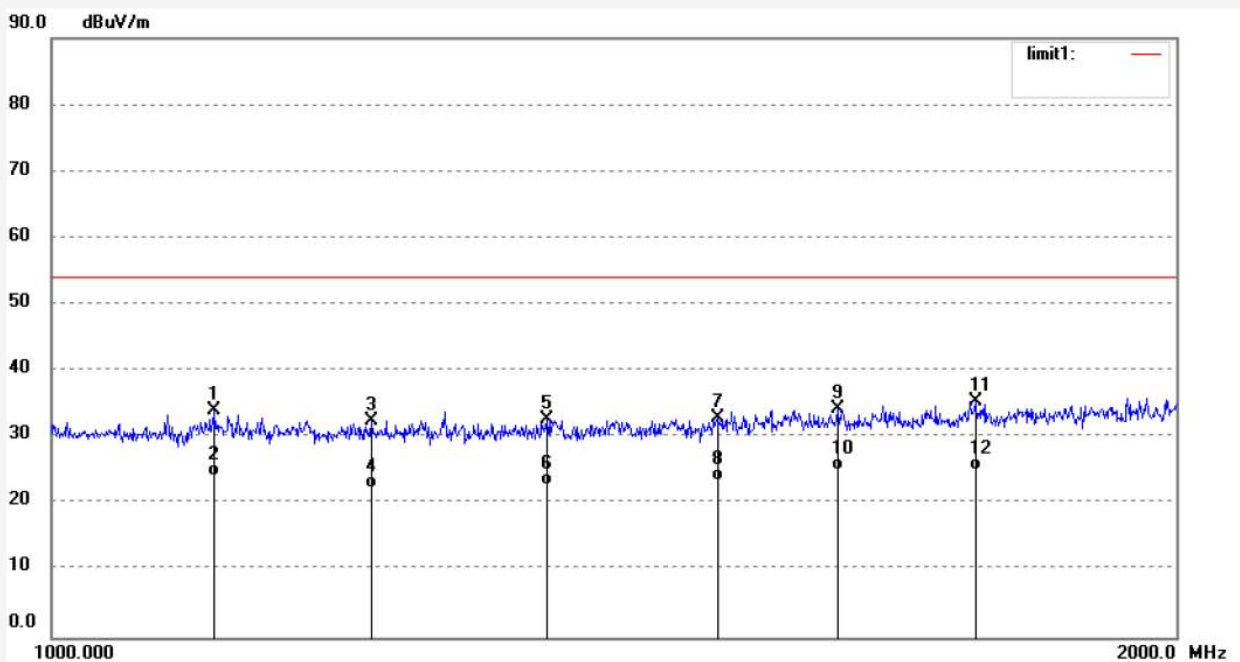


No.	Freq. (MHz)	Reading (dBuV/m)	Factor (dB)	Result (dBuV/m)	Limit (dBuV/m)	Margin (dB)	Detector	Height (cm)	Degree (deg.)	Remark
1	1125.324	43.80	-10.98	32.82	74.00	-41.18	peak			
2	1125.324	33.46	-10.98	22.48	54.00	-31.52	AVG			
3	1271.643	43.86	-10.81	33.05	74.00	-40.95	peak			
4	1271.643	34.19	-10.81	23.38	54.00	-30.62	AVG			
5	1413.232	43.95	-10.45	33.50	74.00	-40.50	peak			
6	1413.232	33.46	-10.45	23.01	54.00	-30.99	AVG			
7	1533.932	44.27	-9.96	34.31	74.00	-39.69	peak			
8	1533.932	34.57	-9.96	24.61	54.00	-29.39	AVG			
9	1787.168	44.00	-9.02	34.98	74.00	-39.02	peak			
10	1787.168	34.16	-9.02	25.14	54.00	-28.86	AVG			
11	1937.113	44.00	-8.34	35.66	74.00	-38.34	peak			
12	1937.113	34.25	-8.34	25.91	54.00	-28.09	AVG			

Job No.: DING11 #367
 Standard: FCC Class B 3M Radiated
 Test item: Radiation Test
 Temp.(C)/Hum.(%) 25 C / 55 %
 EUT: LED touch display
 Mode: COMPONENT IN
 Model: LE-55ME0E
 Manufacturer: PRIMA

Polarization: Horizontal
 Power Source: AC 120V/60Hz
 Date: 16/12/09/
 Time: 9/29/42
 Engineer Signature: DING
 Distance: 3m

Note: Report NO:ATE20162484



No.	Freq. (MHz)	Reading (dBuV/m)	Factor (dB)	Result (dBuV/m)	Limit (dBuV/m)	Margin (dB)	Detector	Height (cm)	Degree (deg.)	Remark
1	1105.953	45.07	-11.01	34.06	74.00	-39.94	peak			
2	1105.953	35.14	-11.01	24.13	54.00	-29.87	AVG			
3	1218.046	43.56	-10.96	32.60	74.00	-41.40	peak			
4	1218.046	33.29	-10.96	22.33	54.00	-31.67	AVG			
5	1357.434	43.56	-10.73	32.83	74.00	-41.17	peak			
6	1357.434	33.48	-10.73	22.75	54.00	-31.25	AVG			
7	1507.528	43.14	-10.22	32.92	74.00	-41.08	peak			
8	1507.528	33.65	-10.22	23.43	54.00	-30.57	AVG			
9	1623.828	44.15	-9.73	34.42	74.00	-39.58	peak			
10	1623.828	34.79	-9.73	25.06	54.00	-28.94	AVG			
11	1767.418	44.69	-9.15	35.54	74.00	-38.46	peak			
12	1767.418	34.13	-9.15	24.98	54.00	-29.02	AVG			



ACCURATE TECHNOLOGY CO., LTD.

F1,Bldg,A,Changyuan New Material Port Keyuan Rd,
Science & Industry Park,Nanshan Shenzhen,P.R.China

Report No.: ATE20162484

Page 40 of 56

Site: 1# Chamber

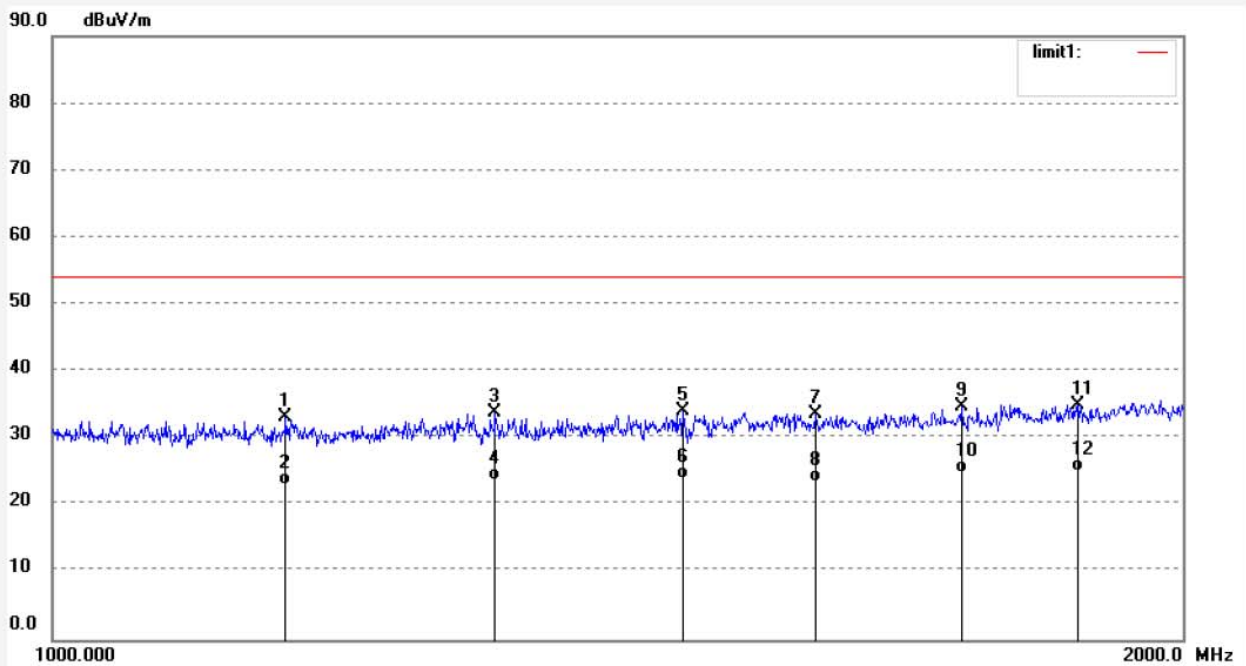
Tel:+86-0755-26503290

Fax:+86-0755-26503396

Job No.: DING11 #366
Standard: FCC Class B 3M Radiated
Test item: Radiation Test
Temp.(C)/Hum.(%) 25 C / 55 %
EUT: LED touch display
Mode: COMPONENT IN
Model: LE-55ME0E
Manufacturer: PRIMA

Polarization: Vertical
Power Source: AC 120V/60Hz
Date: 16/12/09/
Time: 9/27/32
Engineer Signature: DING
Distance: 3m

Note: Report NO:ATE20162484



No.	Freq. (MHz)	Reading (dBuV/m)	Factor (dB)	Result (dBuV/m)	Limit (dBuV/m)	Margin (dB)	Detector	Height (cm)	Degree (deg.)	Remark
1	1153.816	44.08	-10.94	33.14	74.00	-40.86	peak			
2	1153.816	34.02	-10.94	23.08	54.00	-30.92	AVG			
3	1312.014	44.60	-10.76	33.84	74.00	-40.16	peak			
4	1312.014	34.53	-10.76	23.77	54.00	-30.23	AVG			
5	1472.345	44.48	-10.35	34.13	74.00	-39.87	peak			
6	1472.345	34.27	-10.35	23.92	54.00	-30.08	AVG			
7	1596.985	43.51	-9.87	33.64	74.00	-40.36	peak			
8	1596.985	33.46	-9.87	23.59	54.00	-30.41	AVG			
9	1746.673	44.07	-9.24	34.83	74.00	-39.17	peak			
10	1746.673	34.19	-9.24	24.95	54.00	-29.05	AVG			
11	1876.203	43.68	-8.63	35.05	74.00	-38.95	peak			
12	1876.203	33.72	-8.63	25.09	54.00	-28.91	AVG			



ACCURATE TECHNOLOGY CO., LTD.

F1,Bldg,A,Changyuan New Material Port Keyuan Rd,
Science & Industry Park,Nanshan Shenzhen,P.R.China

Report No.: ATE20162484

Page 41 of 56

Site: 1# Chamber

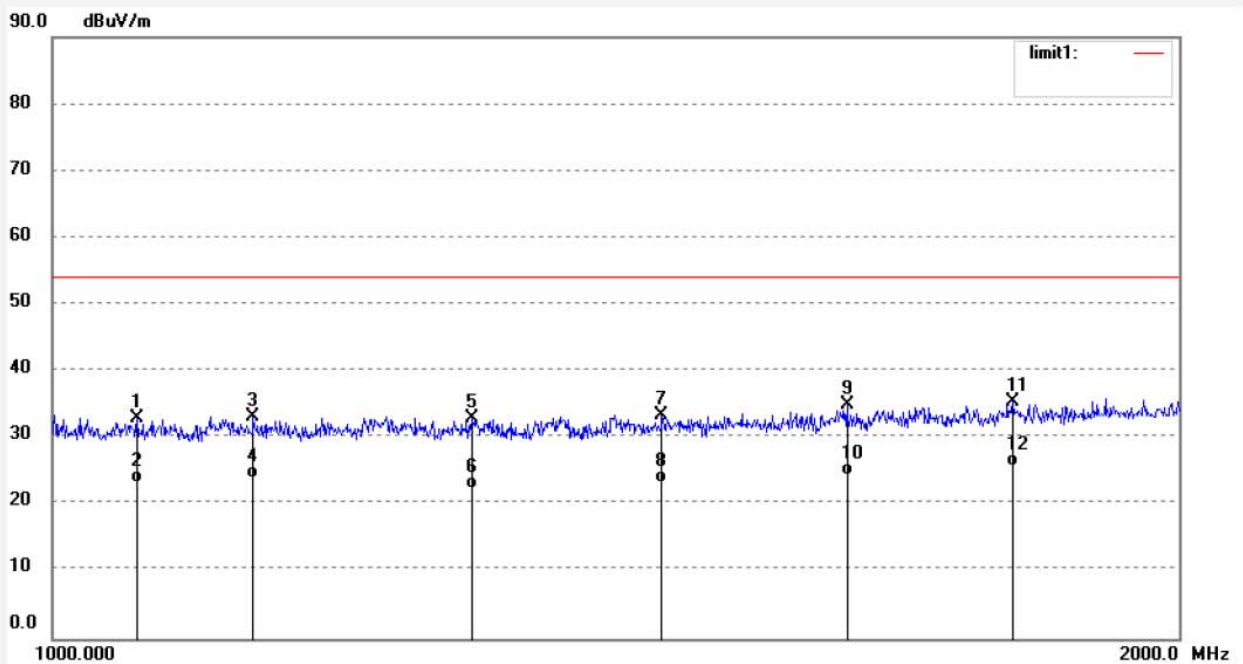
Tel:+86-0755-26503290

Fax:+86-0755-26503396

Job No.: DING11 #371
Standard: FCC Class B 3M Radiated
Test item: Radiation Test
Temp.(C)/Hum.(%) 25 C / 55 %
EUT: LED touch display
Mode: HDMI IN
Model: LE-55ME0E
Manufacturer: PRIMA

Polarization: Horizontal
Power Source: AC 120V/60Hz
Date: 16/12/09/
Time: 9/35/39
Engineer Signature: DING
Distance: 3m

Note: Report NO:ATE20162484



No.	Freq. (MHz)	Reading (dBuV/m)	Factor (dB)	Result (dBuV/m)	Limit (dBuV/m)	Margin (dB)	Detector	Height (cm)	Degree (deg.)	Remark
1	1053.471	44.00	-11.01	32.99	74.00	-41.01	peak			
2	1053.471	34.26	-11.01	23.25	54.00	-30.75	AVG			
3	1131.594	44.25	-10.97	33.28	74.00	-40.72	peak			
4	1131.594	34.87	-10.97	23.90	54.00	-30.10	AVG			
5	1294.815	43.78	-10.77	33.01	74.00	-40.99	peak			
6	1294.815	33.18	-10.77	22.41	54.00	-31.59	AVG			
7	1455.064	43.80	-10.38	33.42	74.00	-40.58	peak			
8	1455.064	33.59	-10.38	23.21	54.00	-30.79	AVG			
9	1630.609	44.63	-9.69	34.94	74.00	-39.06	peak			
10	1630.609	34.08	-9.69	24.39	54.00	-29.61	AVG			
11	1805.884	44.32	-8.90	35.42	74.00	-38.58	peak			
12	1805.884	34.61	-8.90	25.71	54.00	-28.29	AVG			



ACCURATE TECHNOLOGY CO., LTD.

F1,Bldg,A,Changyuan New Material Port Keyuan Rd,
Science & Industry Park,Nanshan Shenzhen,P.R.China

Report No.: ATE20162484

Page 42 of 56

Site: 1# Chamber

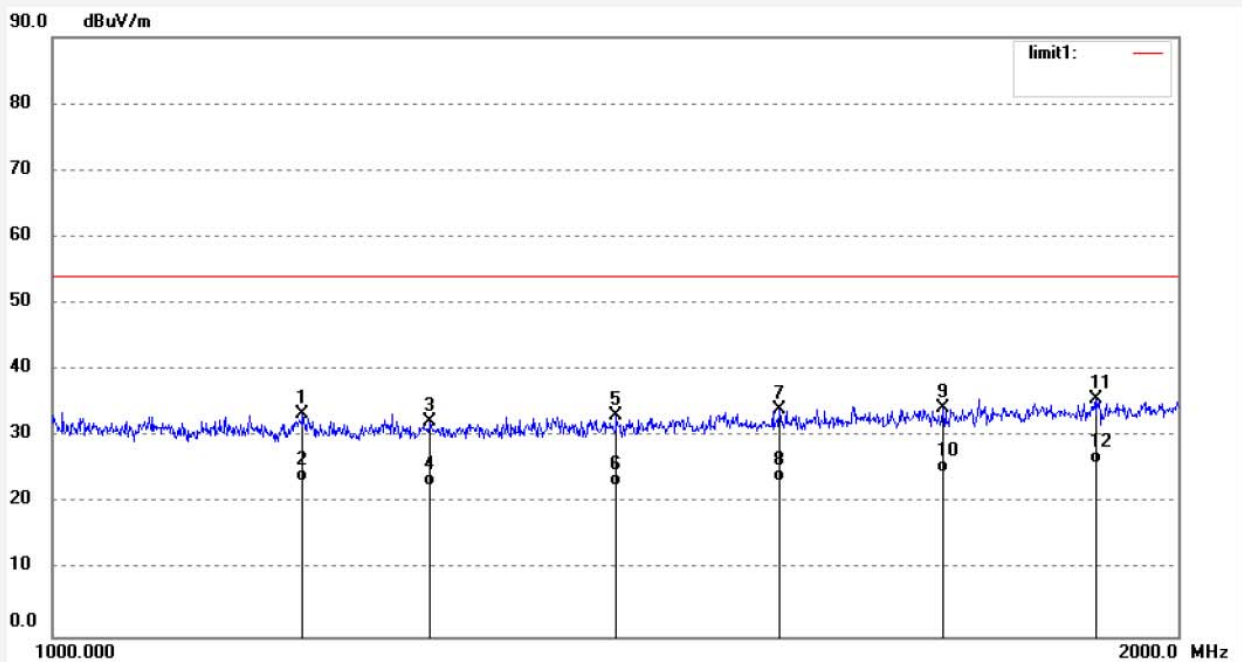
Tel:+86-0755-26503290

Fax:+86-0755-26503396

Job No.: DING11 #370
Standard: FCC Class B 3M Radiated
Test item: Radiation Test
Temp.(C)/Hum.(%) 25 C / 55 %
EUT: LED touch display
Mode: HDMI IN
Model: LE-55ME0E
Manufacturer: PRIMA

Polarization: Vertical
Power Source: AC 120V/60Hz
Date: 16/12/09/
Time: 9/34/09
Engineer Signature: DING
Distance: 3m

Note: Report NO:ATE20162484

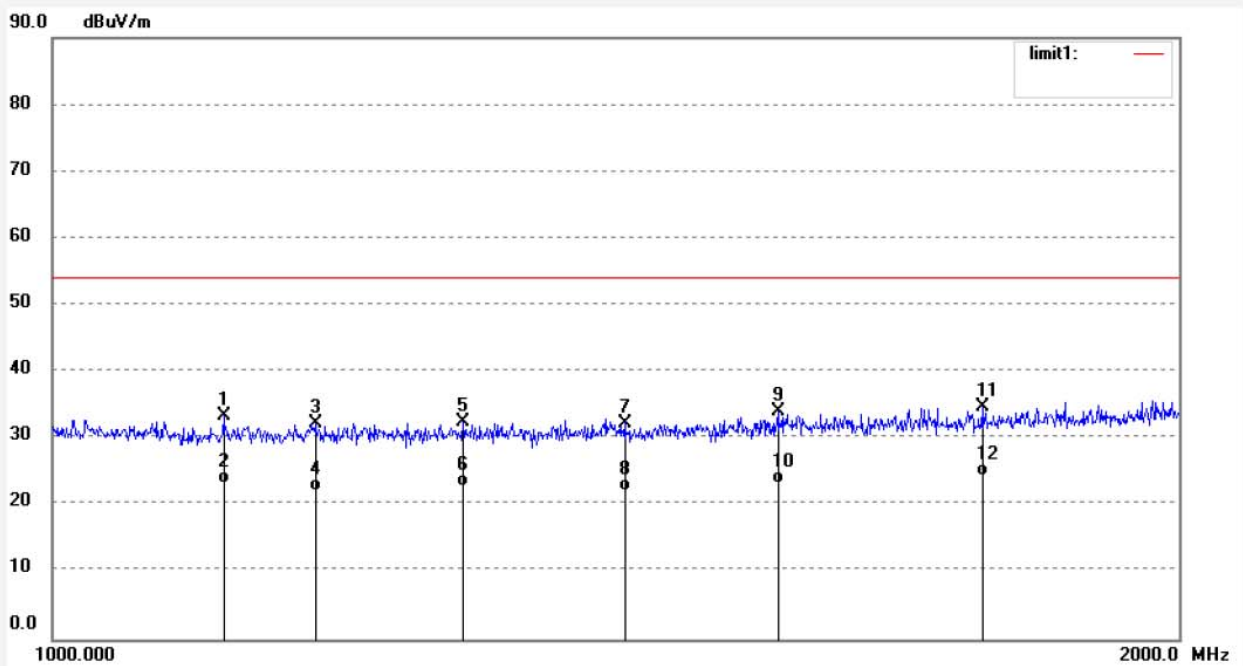


No.	Freq. (MHz)	Reading (dBuV/m)	Factor (dB)	Result (dBuV/m)	Limit (dBuV/m)	Margin (dB)	Detector	Height (cm)	Degree (deg.)	Remark
1	1166.709	44.30	-10.97	33.33	74.00	-40.67	peak			
2	1166.709	34.29	-10.97	23.32	54.00	-30.68	AVG			
3	1261.965	43.17	-10.83	32.34	74.00	-41.66	peak			
4	1261.965	33.54	-10.83	22.71	54.00	-31.29	AVG			
5	1415.196	43.75	-10.45	33.30	74.00	-40.70	peak			
6	1415.196	33.06	-10.45	22.61	54.00	-31.39	AVG			
7	1565.141	43.99	-9.82	34.17	74.00	-39.83	peak			
8	1565.141	33.20	-9.82	23.38	54.00	-30.62	AVG			
9	1730.973	43.52	-9.22	34.30	74.00	-39.70	peak			
10	1730.973	33.81	-9.22	24.59	54.00	-29.41	AVG			
11	1902.446	44.28	-8.70	35.58	74.00	-38.42	peak			
12	1902.446	34.74	-8.70	26.04	54.00	-27.96	AVG			

Job No.: DING11 #364
 Standard: FCC Class B 3M Radiated
 Test item: Radiation Test
 Temp.(C)/Hum.(%) 25 C / 55 %
 EUT: LED touch display
 Mode: USB PLAYING
 Model: LE-55ME0E
 Manufacturer: PRIMA

Polarization: Horizontal
 Power Source: AC 120V/60Hz
 Date: 16/12/09/
 Time: 9/23/24
 Engineer Signature: DING
 Distance: 3m

Note: Report NO:ATE20162484



No.	Freq. (MHz)	Reading (dBuV/m)	Factor (dB)	Result (dBuV/m)	Limit (dBuV/m)	Margin (dB)	Detector	Height (cm)	Degree (deg.)	Remark
1	1111.343	44.42	-11.00	33.42	74.00	-40.58	peak			
2	1111.343	34.18	-11.00	23.18	54.00	-30.82	AVG			
3	1175.657	43.36	-10.99	32.37	74.00	-41.63	peak			
4	1175.657	33.22	-10.99	22.23	54.00	-31.77	AVG			
5	1287.640	43.39	-10.78	32.61	74.00	-41.39	peak			
6	1287.640	33.61	-10.78	22.83	54.00	-31.17	AVG			
7	1422.093	42.84	-10.44	32.40	74.00	-41.60	peak			
8	1422.093	32.49	-10.44	22.05	54.00	-31.95	AVG			
9	1562.968	43.83	-9.82	34.01	74.00	-39.99	peak			
10	1562.968	33.21	-9.82	23.39	54.00	-30.61	AVG			
11	1772.335	43.78	-9.12	34.66	74.00	-39.34	peak			
12	1772.335	33.54	-9.12	24.42	54.00	-29.58	AVG			



ACCURATE TECHNOLOGY CO., LTD.

F1,Bldg,A,Changyuan New Material Port Keyuan Rd,
Science & Industry Park,Nanshan Shenzhen,P.R.China

Report No.: ATE20162484

Page 44 of 56

Site: 1# Chamber

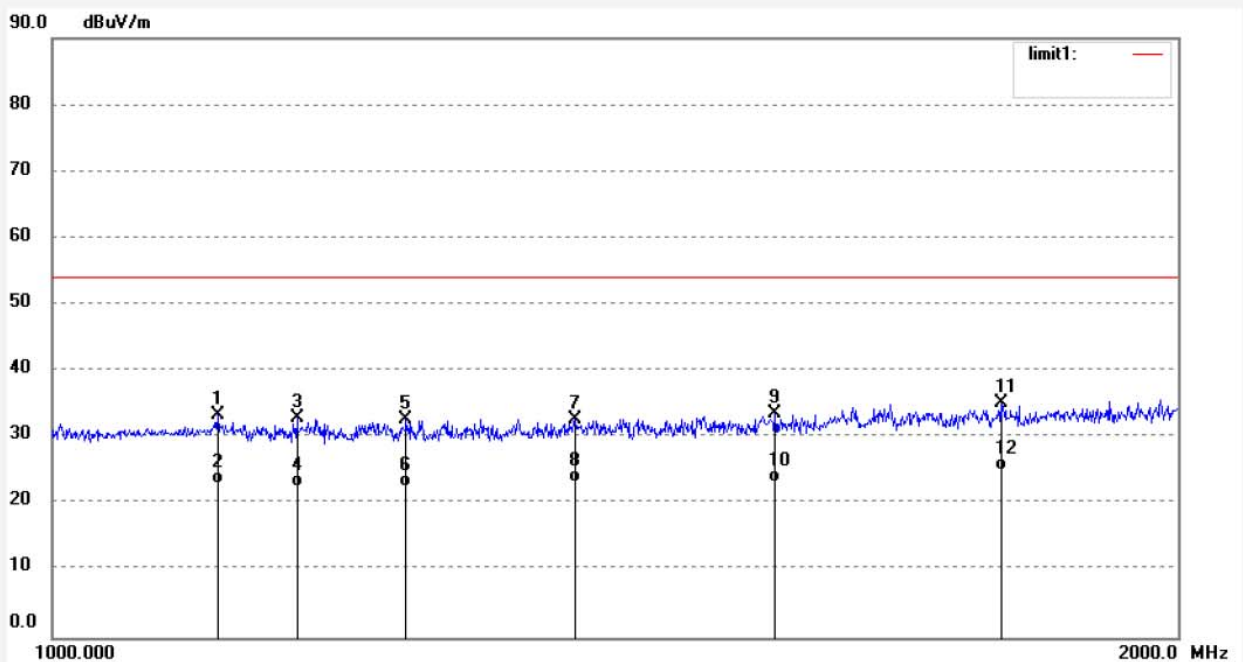
Tel:+86-0755-26503290

Fax:+86-0755-26503396

Job No.: DING11 #365
Standard: FCC Class B 3M Radiated
Test item: Radiation Test
Temp.(C)/Hum.(%) 25 C / 55 %
EUT: LED touch display
Mode: USB PLAYING
Model: LE-55ME0E
Manufacturer: PRIMA

Polarization: Vertical
Power Source: AC 120V/60Hz
Date: 16/12/09/
Time: 9/25/33
Engineer Signature: DING
Distance: 3m

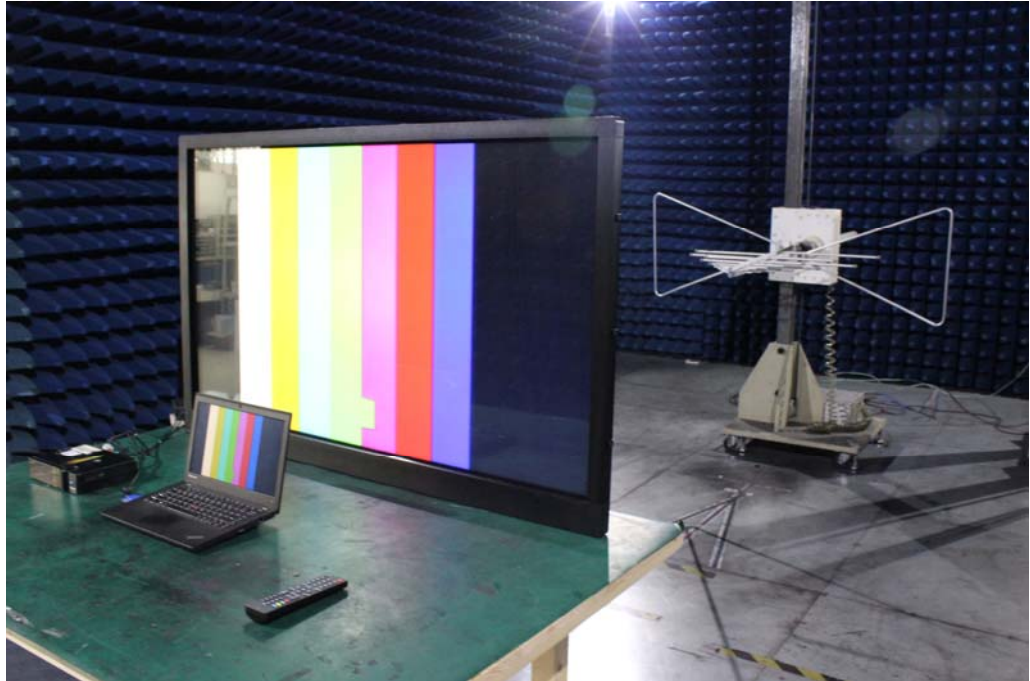
Note: Report NO:ATE20162484



No.	Freq. (MHz)	Reading (dBuV/m)	Factor (dB)	Result (dBuV/m)	Limit (dBuV/m)	Margin (dB)	Detector	Height (cm)	Degree (deg.)	Remark
1	1107.491	44.40	-11.01	33.39	74.00	-40.61	peak			
2	1107.491	34.16	-11.01	23.15	54.00	-30.85	AVG			
3	1162.665	43.86	-10.95	32.91	74.00	-41.09	peak			
4	1162.665	33.49	-10.95	22.54	54.00	-31.46	AVG			
5	1243.692	43.64	-10.87	32.77	74.00	-41.23	peak			
6	1243.692	33.55	-10.87	22.68	54.00	-31.32	AVG			
7	1380.250	43.37	-10.60	32.77	74.00	-41.23	peak			
8	1380.250	33.82	-10.60	23.22	54.00	-30.78	AVG			
9	1560.799	43.52	-9.80	33.72	74.00	-40.28	peak			
10	1560.799	33.07	-9.80	23.27	54.00	-30.73	AVG			
11	1793.385	44.25	-8.98	35.27	74.00	-38.73	peak			
12	1793.385	34.16	-8.98	25.18	54.00	-28.82	AVG			

6. PHOTOGRAPHS

6.1.Photos of Radiated Emission Measurement

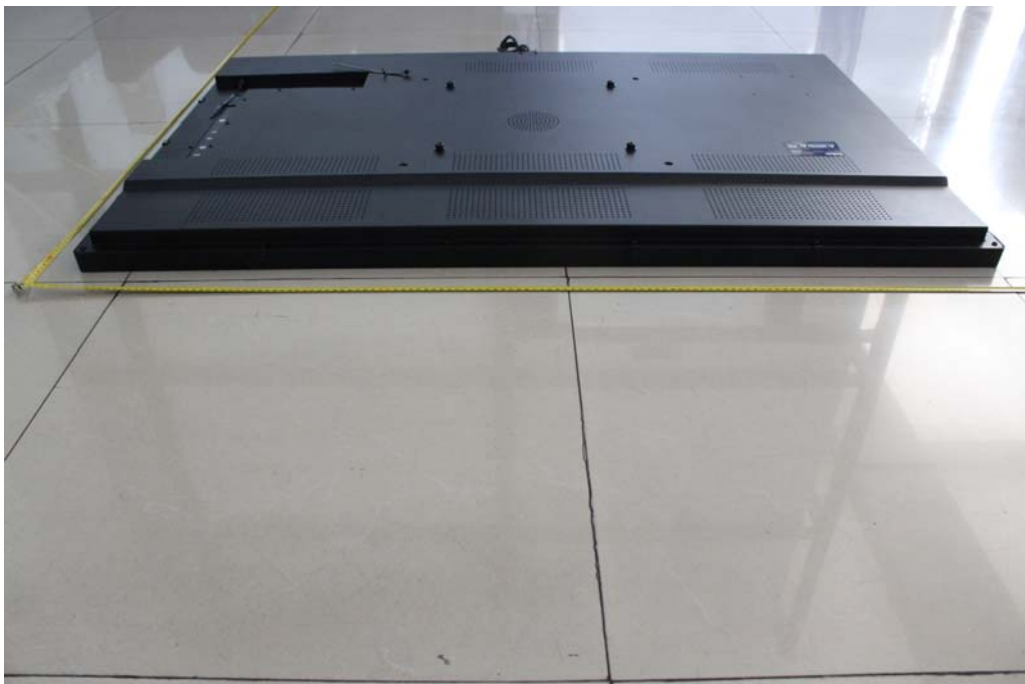


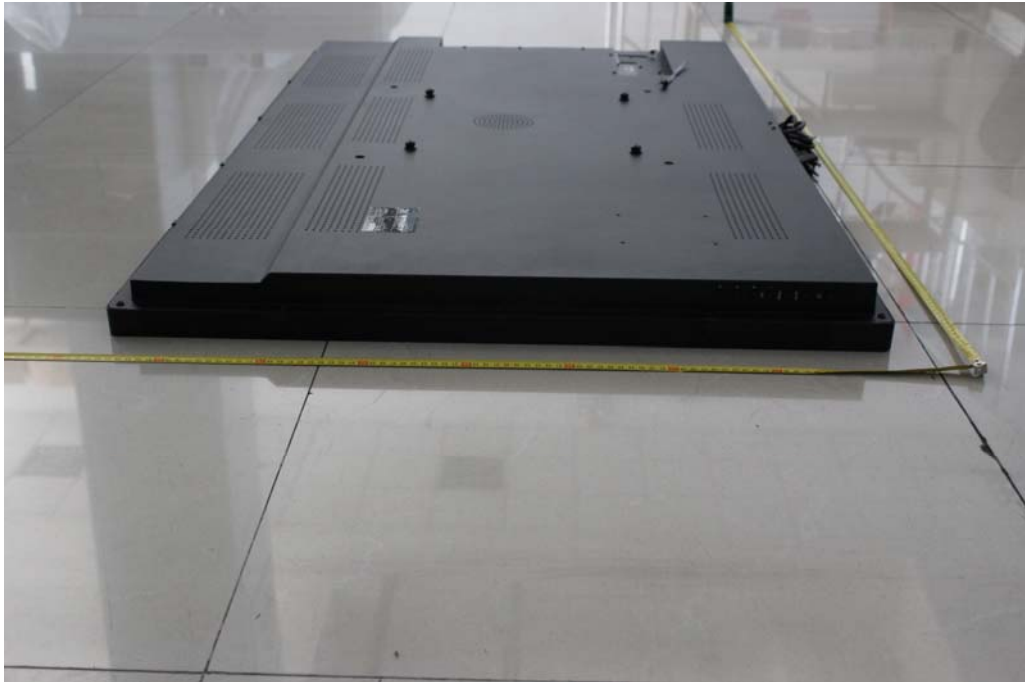
6.2.Photo of Conducted Emission Measurement



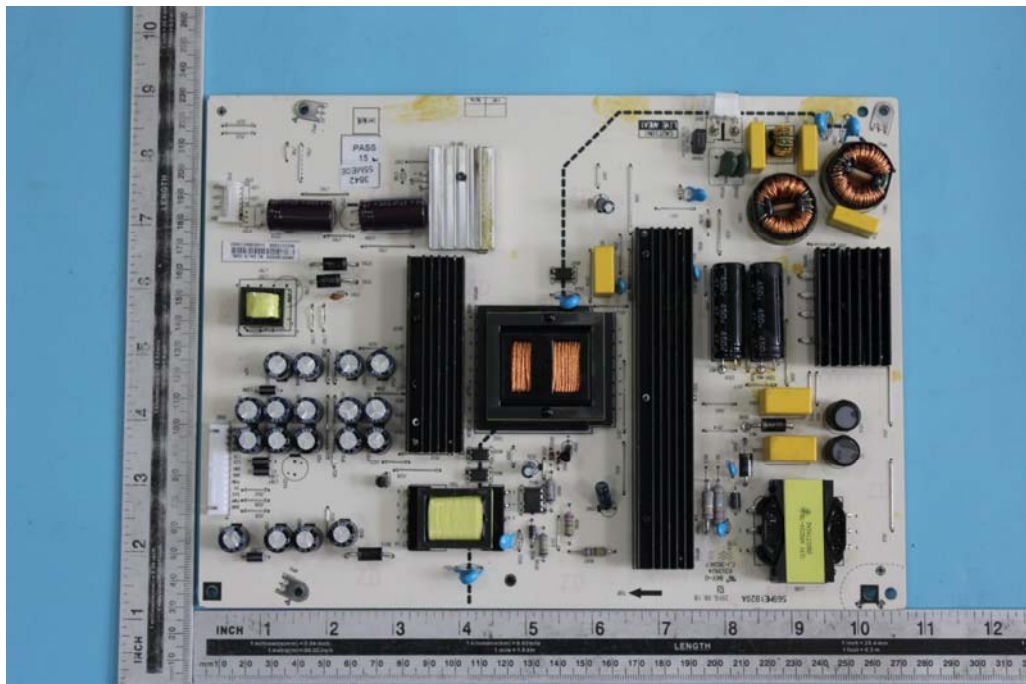
6.3.Photo of EUT

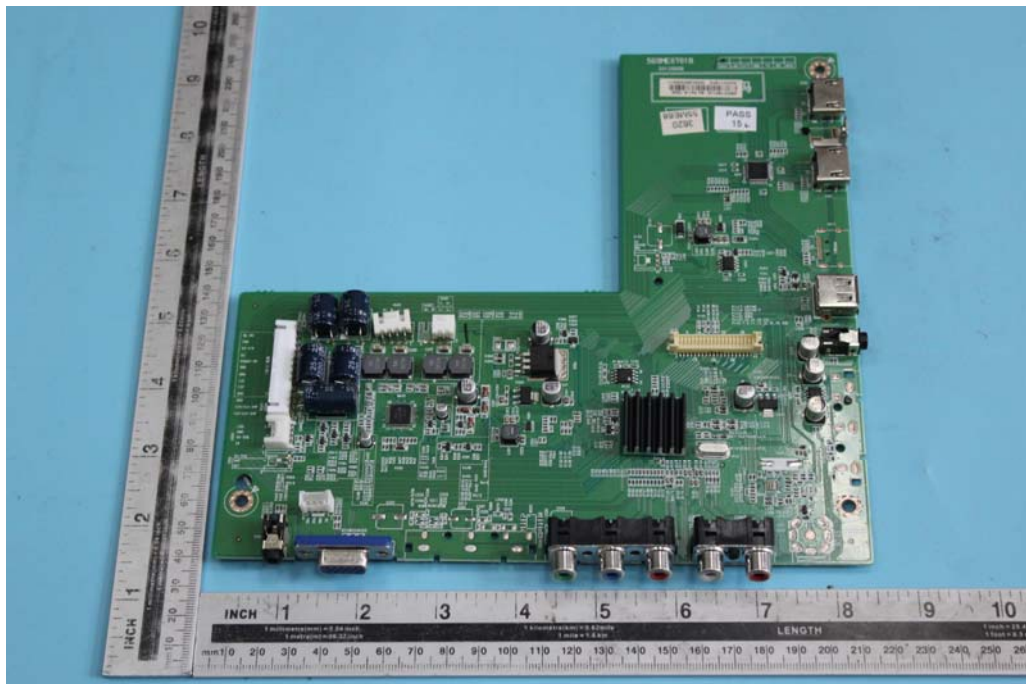
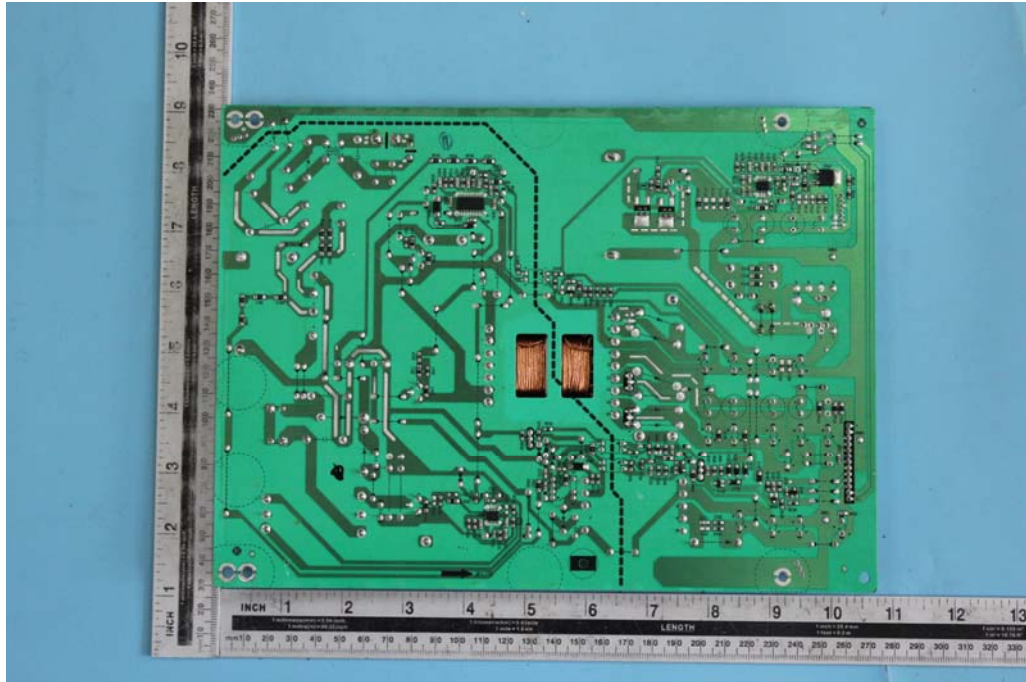


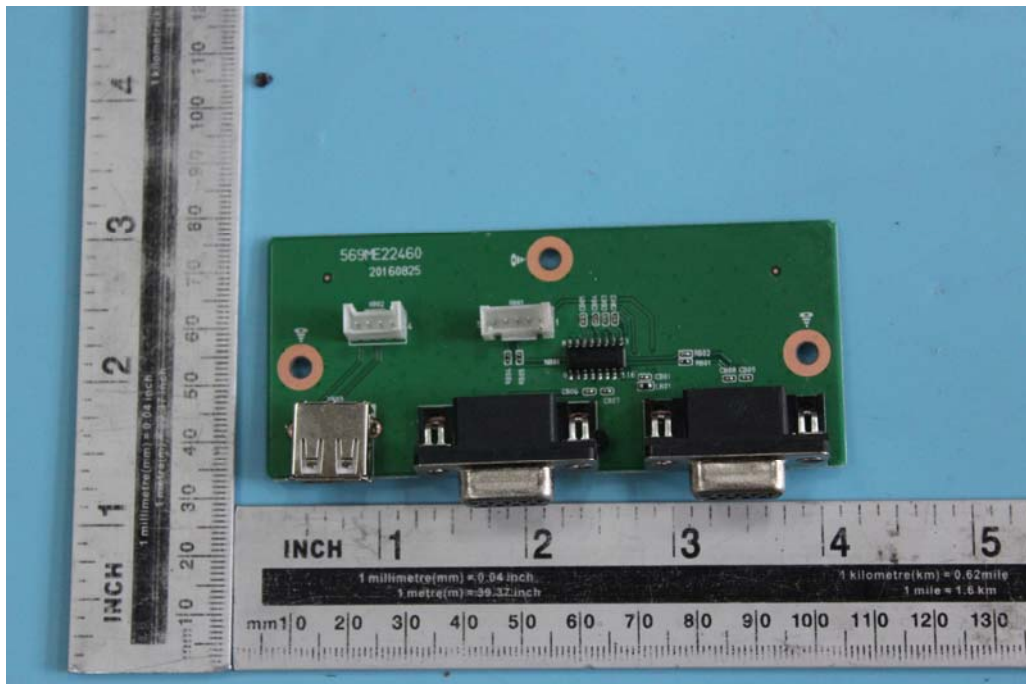
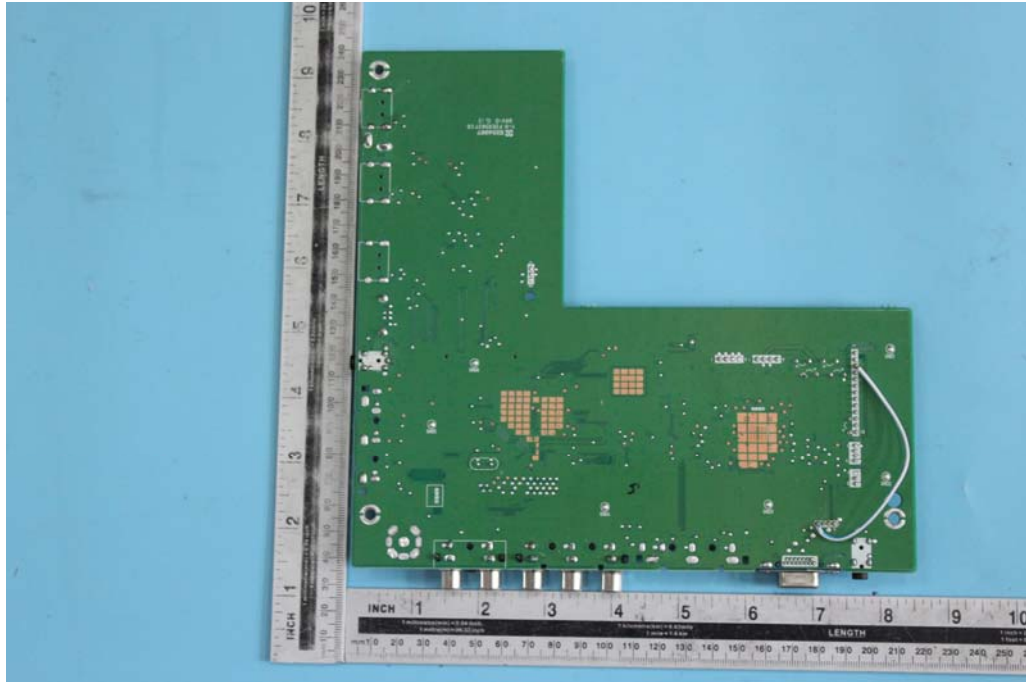


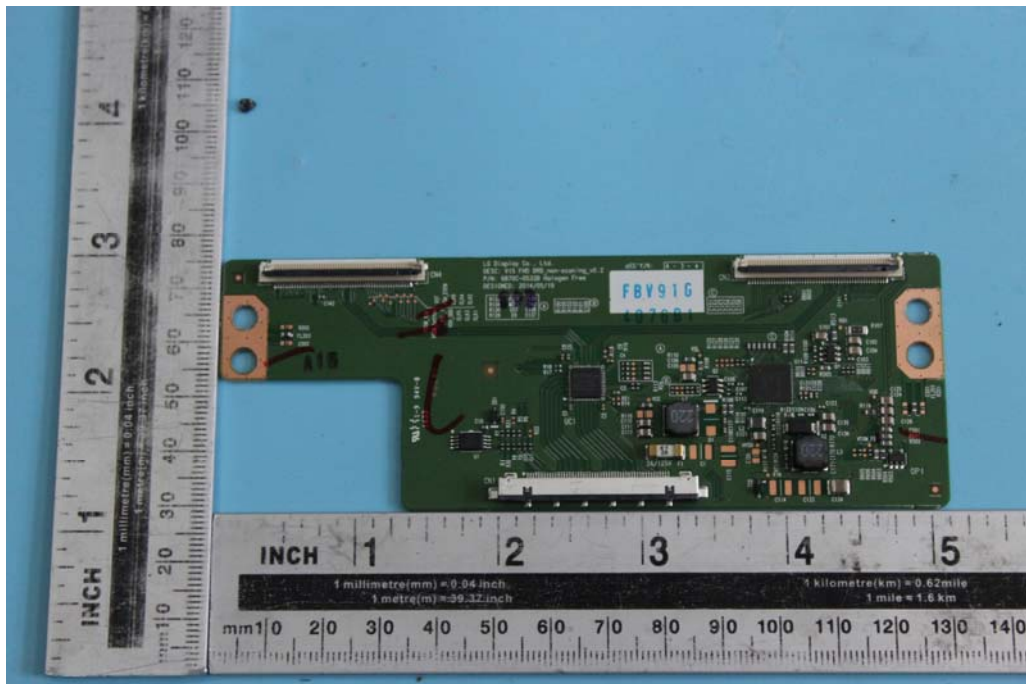
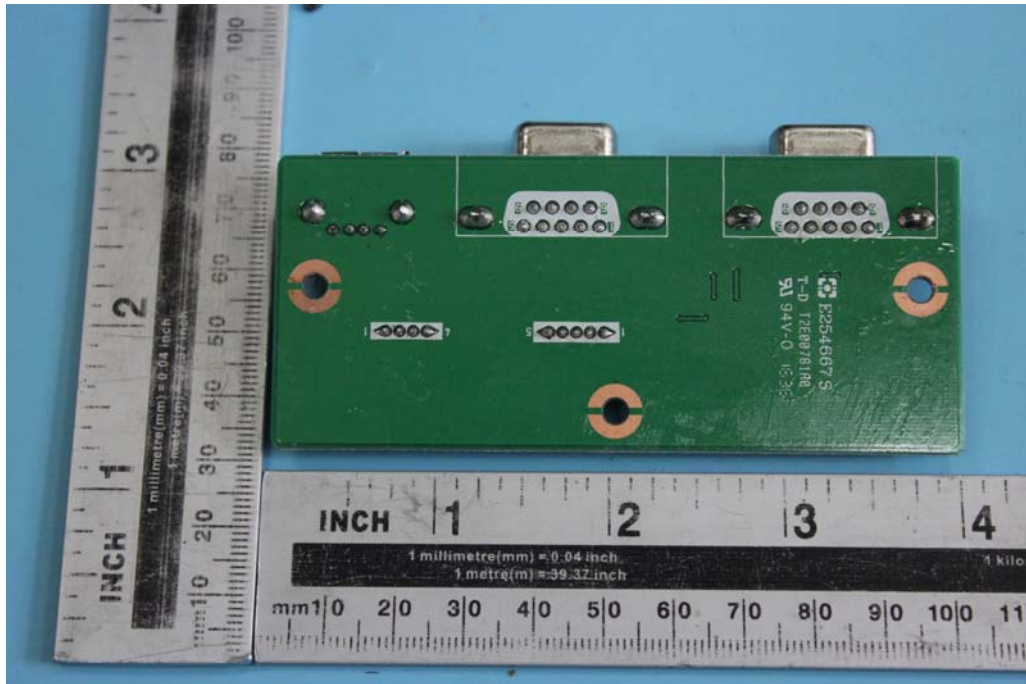


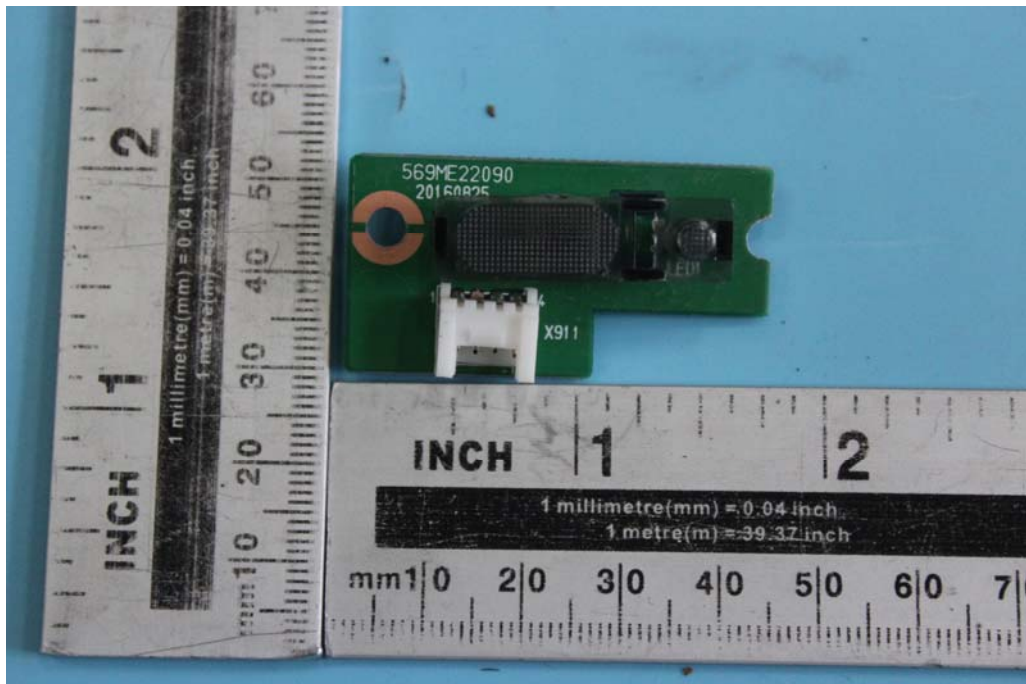
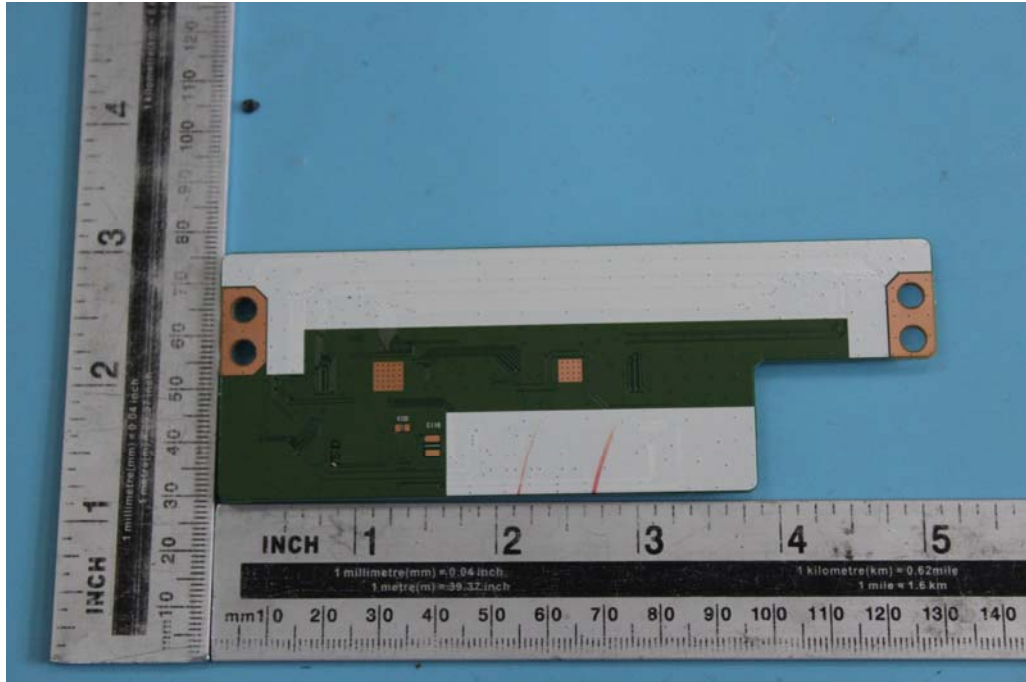


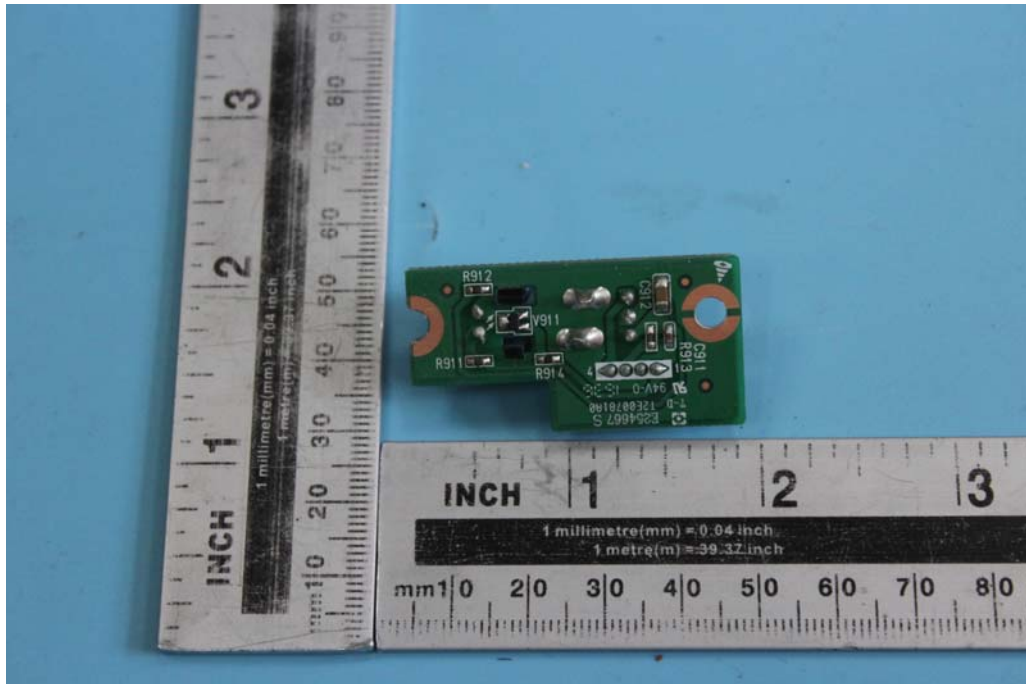












******* End of Test Report *******