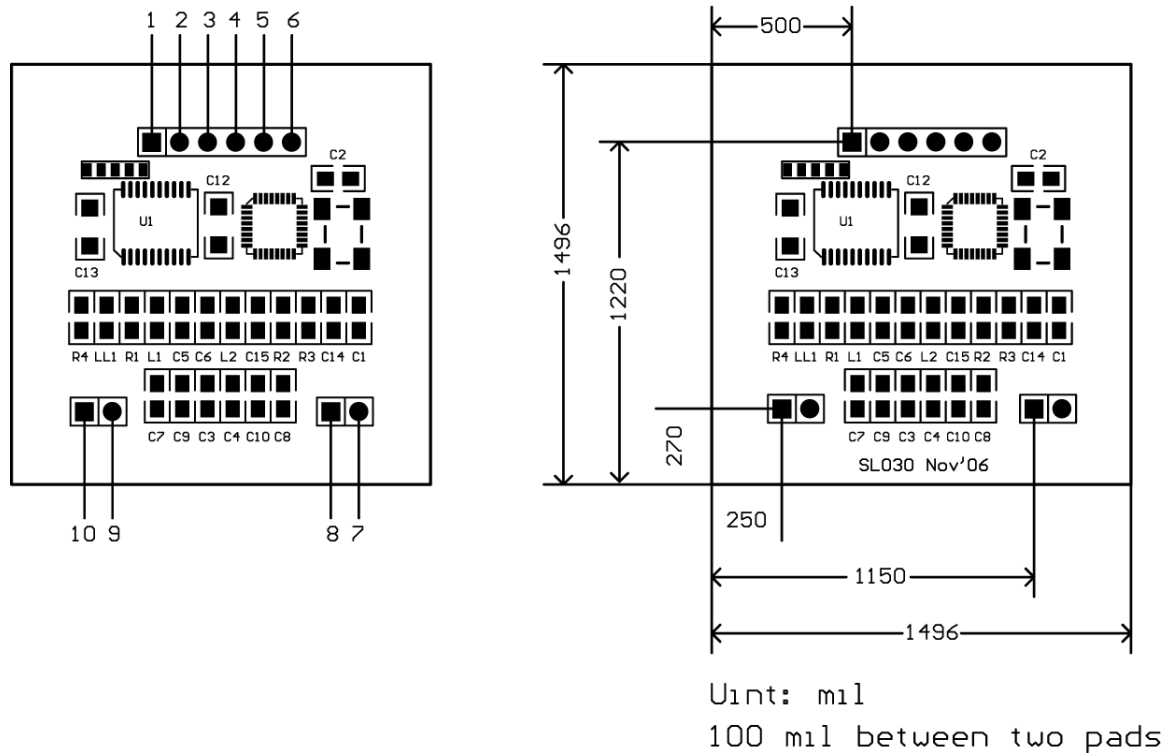


# Module Installation of SL030

## 1. PINNING INFORMATION



PIN	SYMBOL	TYPE	DESCRIPTION
1	VDD	PWR	Power supply, 2.5V to 3.6VDC
2	IN	Input	Falling edge wake up SL030 from power down mode
3	SDA	Input/Output	Serial Data Line
4	SLC	Input	Serial Clock Line
5	Out	Output	Tag detect signal low level indicating tag in high level indicating tag out
6	GND	PWR	Ground
7	NC		
8	NC		
9	NC		
10	NC		

## 2. Installation Method

You can connect your device with the module by soldering lines into these pins (holes).

The diagram is this,

Host Device	SL030 Module
I2C_SCK	SLC(Pin4)
I2C_SDA	SDA(Pin3)
Output GPIO(for controlling sleep and wake-up)	IN(Pin2)
Input GPIO(for receiving tag status signal)	Out(Pin5)

Additionally,

Pin VDD must be connected with power supply (2.7~3.6V);

Pin GND must be connected with power ground together with host device's GND.