


TEST REPORT

Report No.: **CHTEW21030055** Report Verification: 


Project No.: **SHT2102026106EW**

FCC ID: **2ADHNCOCSECARGO01**

Applicant's name: **MATRIX COMSEC PVT. LTD.**

Address: **394 - GIDC, Makarpura, Vadodara, Gujarat 390 010, India**

Test item description: **COSEC ARGO**

Trade Mark: 

Model/Type reference: **COSEC ARGO CAE200**

Listed Model(s): **COSEC ARGO FOE212**

Standard: **FCC CFR Title 47 Part 15 Subpart C Section 15.209**

Date of receipt of test sample: **Feb.26, 2021**

Date of testing: **Feb.26, 2021- Mar.09, 2021**

Date of issue: **Mar.10, 2021**

Result: **PASS**

Compiled by
(Position+Printed name+Signature): File administrator Echo Wei

Echo Wei

Supervised by
(Position+Printed name+Signature): Project Engineer Kiki Kong

Kiki Kong

Approved by
(Position+Printed name+Signature): RF Manager Hans Hu

Hans Hu

Testing Laboratory Name: **Shenzhen Huatongwei International Inspection Co., Ltd.**

Address: **1/F, Bldg 3, Hongfa Hi-tech Industrial Park, Genyu Road,
Tianliao, Gongming, Shenzhen, China**

Shenzhen Huatongwei International Inspection Co., Ltd. All rights reserved.

This publication may be reproduced in whole or in part for non-commercial purposes as long as the Shenzhen Huatongwei International Inspection Co., Ltd. is acknowledged as copyright owner and source of the material. Shenzhen Huatongwei International Inspection Co., Ltd. takes no responsibility for and will not assume liability for damages resulting from the reader's interpretation of the reproduced material due to its placement and context.

The test report merely correspond to the test sample.

Contents

1.	<u>TEST STANDARDS AND REPORT VERSION</u>	<u>3</u>
1.1.	Test Standards	3
1.2.	Report version information	3
2.	<u>TEST DESCRIPTION</u>	<u>4</u>
3.	<u>SUMMARY</u>	<u>5</u>
3.1.	Client Information	5
3.2.	Product Description	5
3.3.	Radio Specification Description	5
3.4.	Testing Laboratory Information	6
4.	<u>TEST CONFIGURATION</u>	<u>7</u>
4.1.	EUT operation mode	7
4.2.	Support unit used in test configuration and system	7
4.3.	Testing environmental condition	7
4.4.	Measurement uncertainty	7
4.5.	Equipments Used during the Test	8
5.	<u>TEST CONDITIONS AND RESULTS</u>	<u>10</u>
5.1.	Antenna requirement	10
5.2.	AC Power Conducted Emissions	11
5.3.	20dB Bandwidth	14
5.4.	Radiated Emission	15
6.	<u>TEST SETUP PHOTOS</u>	<u>18</u>
7.	<u>EXTERNAL AND INTERNAL PHOTOS OF THE EUT</u>	<u>20</u>

1. TEST STANDARDS AND REPORT VERSION

1.1. Test Standards

The tests were performed according to following standards:

[FCC Rules Part 15.209](#): Radiated emission limits; general requirements

[ANSI C63.10-2013](#): American National Standard for Testing Unlicensed Wireless Devices.

1.2. Report version information

Revision No.	Date of issue	Description
N/A	2021-03-10	Original

2. TEST DESCRIPTION

Report clause	Test Item	Section in CFR 47	Result	Test Engineer
5.1	Antenna requirement	15.203	PASS	-
5.2	AC Power Line Conducted Emissions	15.207	PASS	Si Ding
5.3	20dB Occupied Bandwidth	2.1049	PASS	Hailey Chen
5.4	Spurious Emissions	15.209	PASS	Jian Quan Wu


Noted: The measurement uncertainty is not included in the test result.

3. SUMMARY

3.1. Client Information

Applicant:	MATRIX COMSEC PVT. LTD.
Address:	394 - GIDC, Makarpura, Vadodara, Gujarat 390 010, India
Manufacturer:	MATRIX COMSEC PVT LTD
Address:	15 & 19-GIDC, WAGHODIA, DIST.VADODARA - 391760, INDIA
Factory:	MATRIX COMSEC PVT LTD
Address:	15 & 19-GIDC, WAGHODIA, DIST.VADODARA - 391760, INDIA

3.2. Product Description

Name of EUT:	COSEC ARGO
Trade Mark:	
Model No.:	COSEC ARGO CAE200
Listed Model(s):	COSEC ARGO FOE212
Power supply:	DC12V for adapter DC 48V for POE
Adapter Information:	Model:ADS-25SGP-12 12024E Input: 100-240Va.c.,50/60Hz MAX 0.7A Output: 12.0Vd.c.,2.0A 24.0W
Hardware version:	V1R2
Software version:	V1R19

3.3. Radio Specification Description

Operation frequency:	125kHz
Channel number:	1
Modulation Type:	ASK
Antenna type:	Coil Antenna

3.4. Testing Laboratory Information

Laboratory Name	Shenzhen Huatongwei International Inspection Co., Ltd.	
Laboratory Location	1/F, Bldg 3, Hongfa Hi-tech Industrial Park, Genyu Road, Tianliao, Gongming, Shenzhen, China	
Connect information:	Phone: 86-755-26715499 E-mail: cs@szhtw.com.cn http://www.szhtw.com.cn	
Qualifications	Type	Accreditation Number
	FCC	762235

4. TEST CONFIGURATION

4.1. EUT operation mode

TEST MODE

For RF test items
The engineering test program was provided and enabled to make EUT continuous transmit.
For AC power line conducted emissions:
The engineering test program was provided and enabled to make EUT continuous transmit.

4.2. Support unit used in test configuration and system

The EUT has been associated with peripherals and configuration operated in a manner tended to maximize its emission characteristics in a typical application.

The following peripheral devices and interface cables were connected during the measurement:

Whether support unit is used?			
✓ Yes			
Item	Equipement	Trade Name	Model No.
1	COSEC PATH RDCE	MATRIX	10003879
2	EM Magnetic lock	N/A	N/A

4.3. Testing environmental condition

Type	Requirement	Actual
Temperature:	15~35°C	25°C
Relative Humidity:	25~75%	50%
Air Pressure:	860~1060mbar	1000mbar

4.4. Measurement uncertainty

Test Items	Measurement Uncertainty
AC Power Conducted Emissions	±3.02 dB
Radiated emissions below 1GHz	±4.90 dB
Radiated emissions above 1GHz	±4.96 dB
Occupied Bandwidth	15 Hz

This uncertainty represents an expanded uncertainty expressed at approximately the 95% confidence level using a coverage factor of k=1.96.

4.5. Equipments Used during the Test

● Conducted Emission							
Used	Test Equipment	Manufacturer	Equipment No.	Model No.	Serial No.	Last Cal. Date (YY-MM-DD)	Next Cal. Date (YY-MM-DD)
●	Shielded Room	Albatross projects	HTWE0114	N/A	N/A	2018/09/28	2023/09/27
●	EMI Test Receiver	R&S	HTWE0111	ESCI	101247	2020/10/19	2021/10/18
●	Artificial Mains	SCHWARZBECK	HTWE0113	NNLK 8121	573	2020/10/15	2021/10/14
●	Pulse Limiter	R&S	HTWE0033	ESH3-Z2	100499	2020/10/15	2021/10/14
●	RF Connection Cable	HUBER+SUHNER	HTWE0113-02	ENVIROFLEX_142	EF-NM-BNCM-2M	2020/10/15	2021/10/14
●	Test Software	R&S	N/A	ES-K1	N/A	N/A	N/A

● Radiated emission-6th test site							
Used	Test Equipment	Manufacturer	Equipment No.	Model No.	Serial No.	Last Cal. Date (YY-MM-DD)	Next Cal. Date (YY-MM-DD)
●	Semi-Anechoic Chamber	Albatross projects	HTWE0127	SAC-3m-02	C11121	2018/09/30	2021/09/29
●	EMI Test Receiver	R&S	HTWE0099	ESCI	100900	2020/10/19	2021/10/18
●	Loop Antenna	R&S	HTWE0170	HFH2-Z2	100020	2018/04/02	2021/04/01
●	Ultra-Broadband Antenna	SCHWARZBECK	HTWE0123	VULB9163	538	2018/04/04	2021/04/03
●	Pre-Amplifier	SCHWARZBECK	HTWE0295	BBV 9742	N/A	2020/11/13	2021/11/12
●	RF Connection Cable	HUBER+SUHNER	HTWE0062-01	N/A	N/A	2020/05/27	2021/05/26
●	RF Connection Cable	HUBER+SUHNER	HTWE0062-02	SUCOFLEX104	501184/4	2020/05/27	2021/05/26
●	Test Software	R&S	N/A	ES-K1	N/A	N/A	N/A

● Radiated emission-7th test site							
Used	Test Equipment	Manufacturer	Equipment No.	Model No.	Serial No.	Last Cal. Date (YY-MM-DD)	Next Cal. Date (YY-MM-DD)
●	Semi-Anechoic Chamber	Albatross projects	HTWE0122	SAC-3m-01	N/A	2018/09/27	2021/09/26
●	Spectrum Analyzer	R&S	HTWE0098	FSP40	100597	2020/10/20	2021/10/19
●	Horn Antenna	SCHWARZBECK	HTWE0126	9120D	1011	2020/04/01	2023/03/31
●	Broadband Horn Antenna	SCHWARZBECK	HTWE0103	BBHA9170	BBHA9170472	2018/10/11	2021/10/11
●	Pre-amplifier	CD	HTWE0071	PAP-0102	12004	2020/11/13	2021/11/12
●	Broadband Pre-amplifier	SCHWARZBECK	HTWE0201	BBV 9718	9718-248	2020/05/23	2021/05/22
●	RF Connection Cable	HUBER+SUHNER	HTWE0120-01	6m 18GHz S Serisa	N/A	2020/05/10	2021/05/09
●	RF Connection Cable	HUBER+SUHNER	HTWE0120-02	6m 3GHz RG Serisa	N/A	2020/05/10	2021/05/09
●	RF Connection Cable	HUBER+SUHNER	HTWE0120-03	6m 3GHz RG Serisa	N/A	2020/05/10	2021/05/09
●	RF Connection Cable	HUBER+SUHNER	HTWE0120-04	6m 3GHz RG Serisa	N/A	2020/05/10	2021/05/09
●	RF Connection Cable	HUBER+SUHNER	HTWE0121-01	6m 18GHz S Serisa	N/A	2020/05/10	2021/05/09
●	Test Software	Audix	N/A	E3	N/A	N/A	N/A

● RF Conducted Method						
Used	Test Equipment	Manufacturer	Model No.	Serial No.	Last Cal. Date (YY-MM-DD)	Next Cal. Date (YY-MM-DD)
●	Signal and spectrum Analyzer	R&S	FSV40	100048	2020/10/19	2021/10/18
●	Spectrum Analyzer	Agilent	N9020A	MY50510187	2020/10/19	2021/10/18
●	Power Meter	Anritsu	ML249A	N/A	2020/10/19	2021/10/18
○	Radio communication tester	R&S	CMW500	137688-Lv	2020/10/19	2021/10/18

5. TEST CONDITIONS AND RESULTS

5.1. Antenna requirement

Requirement

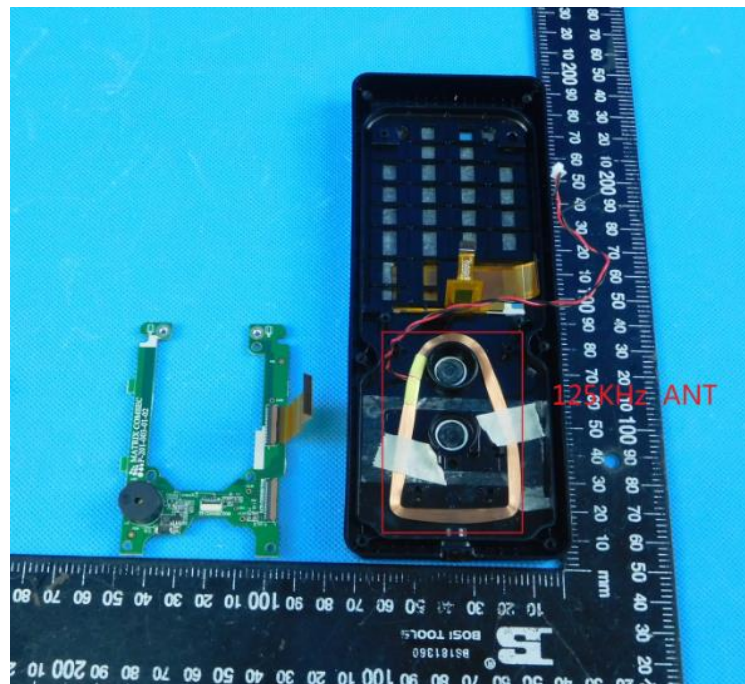
FCC CFR Title 47 Part 15 Subpart C Section 15.203:

An intentional radiator shall be designed to ensure that no antenna other than that furnished by the responsible party shall be used with the device. The use of a permanently attached antenna or of an antenna that uses a unique coupling to the intentional radiator, the manufacturer may design the unit so that a broken antenna can be replaced by the user, but the use of a standard antenna jack or electrical connector is prohibited.

TEST RESULTS

☒ **Passed** ☐ **Not Applicable**

The antenna type is a Coil antenna, please refer to the below antenna photo.



5.2. AC Power Conducted Emissions

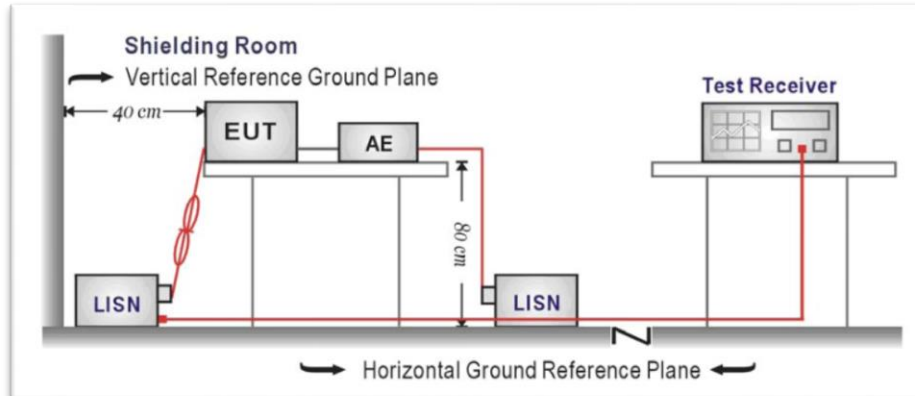
LIMIT

FCC CFR Title 47 Part 15 Subpart C Section 15.207:

Frequency range (MHz)	Limit (dBuV)	
	Quasi-peak	Average
0.15-0.5	66 to 56*	56 to 46*
0.5-5	56	46
5-30	60	50

* Decreases with the logarithm of the frequency.

TEST CONFIGURATION



TEST PROCEDURE

1. The EUT was setup according to ANSI C63.10
2. The EUT was placed on a plat form of nominal size, 1 m by 1.5 m, raised 80 cm above the conducting ground plane. The vertical conducting plane was located 40 cm to the rear of the EUT. All other surfaces of EUT were at least 80 cm from any other grounded conducting surface.
3. The EUT and simulators are connected to the main power through a line impedance stabilization network (LISN). The LISN provides a 50ohm / 50uH coupling impedance for the measuring equipment.
4. The peripheral devices are also connected to the main power through a LISN. (Please refer to the block diagram of the test setup and photographs)
5. Each current-carrying conductor of the EUT power cord, except the ground (safety) conductor, was individually connected through a LISN to the input power source.
6. The excess length of the power cord between the EUT and the LISN receptacle were folded back and forth at the center of the lead to form a bundle not exceeding 40 cm in length.
7. Conducted emissions were investigated over the frequency range from 0.15MHz to 30MHz using a receiver bandwidth of 9 kHz.
8. During the above scans, the emissions were maximized by cable manipulation.

TEST MODE:

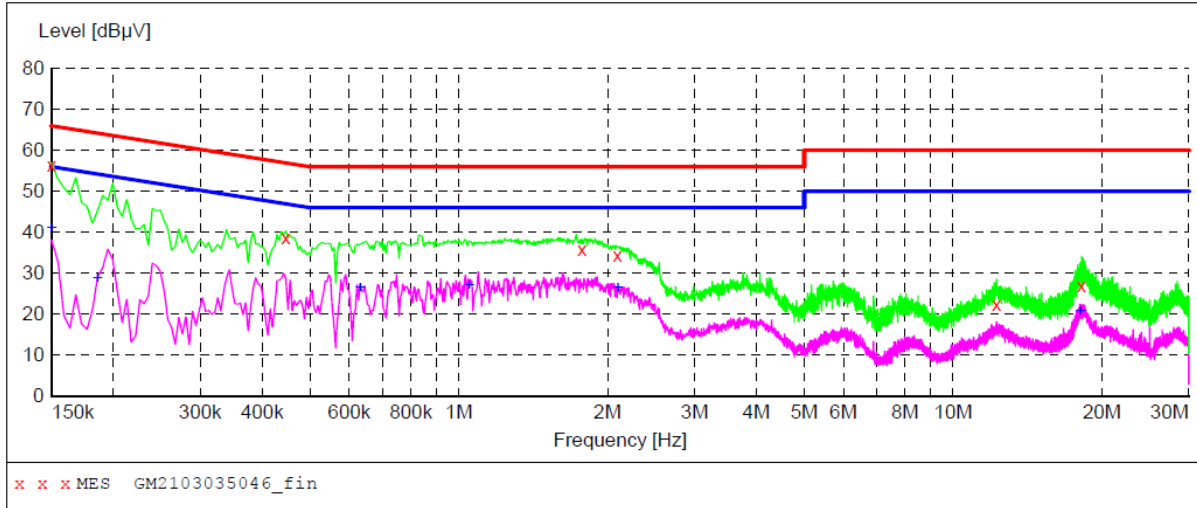
Please refer to the clause 4.1

TEST RESULTS

☒ Passed ☐ Not Applicable

Test Line:

L

**MEASUREMENT RESULT: "GM2103035046_fin"**

3/3/2021 4:49PM

Frequency MHz	Level dBμV	Transd dB	Limit dBμV	Margin dB	Detector	Line	PE
0.150000	56.40	10.2	66	9.6	QP	L1	GND
0.447000	38.70	10.2	57	18.2	QP	L1	GND
1.774500	35.90	10.2	56	20.1	QP	L1	GND
2.094000	34.50	10.2	56	21.5	QP	L1	GND
12.232500	22.40	10.5	60	37.6	QP	L1	GND
18.177000	27.00	10.5	60	33.0	QP	L1	GND

MEASUREMENT RESULT: "GM2103085046_fin2"

3/3/2021 4:49PM

Frequency MHz	Level dBμV	Transd dB	Limit dBμV	Margin dB	Detector	Line	PE
0.150000	41.00	10.2	56	15.0	AV	L1	GND
0.186000	28.70	10.2	54	25.5	AV	L1	GND
0.631500	26.30	10.2	46	19.7	AV	L1	GND
1.050000	27.00	10.2	46	19.0	AV	L1	GND
2.098500	26.40	10.2	46	19.6	AV	L1	GND
18.109500	20.80	10.5	50	29.2	AV	L1	GND

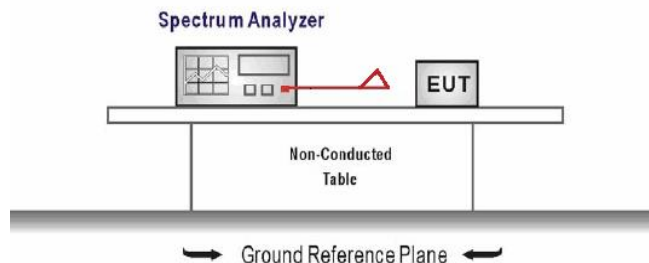
5.3. 20dB Bandwidth

Limit

FCC CFR Title 47 Part 15 Subpart C Section 15.215

Intentional radiators must be designed to ensure that the 20dB emission bandwidth in the specific band.

TEST CONFIGURATION



TEST PROCEDURE

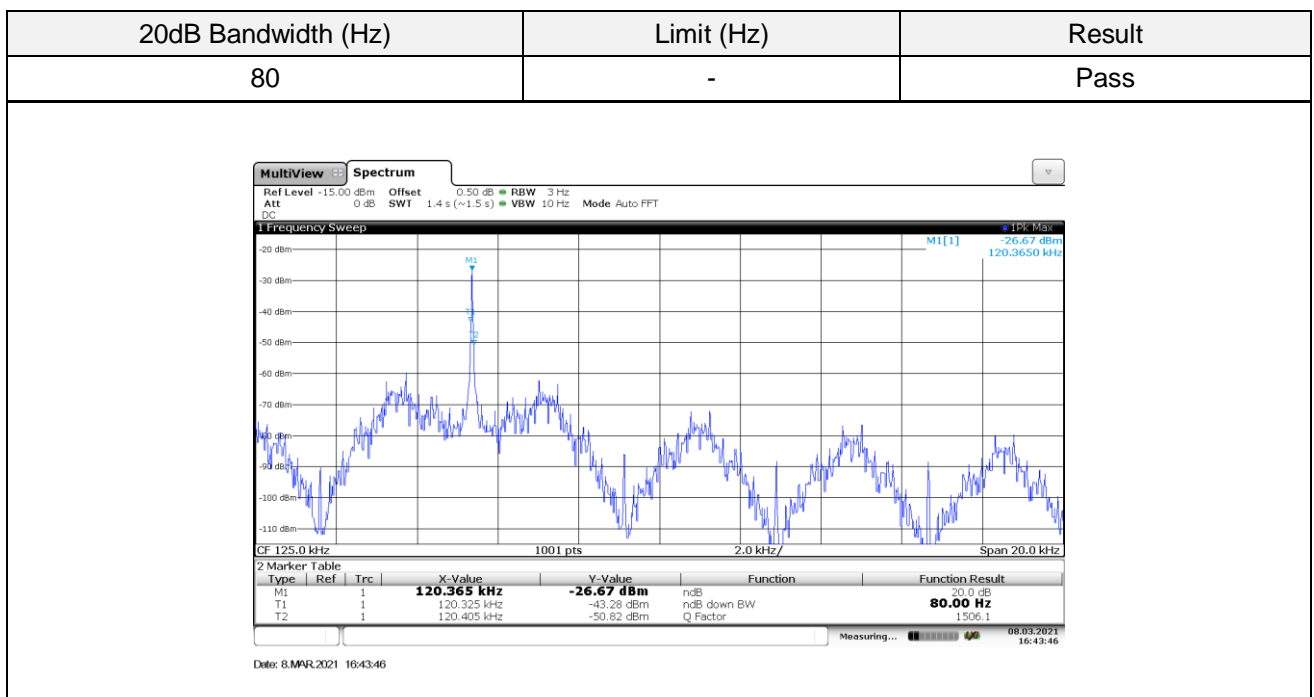
1. The transmitter output was connected to the spectrum analyzer through an attenuator, the path loss was compensated to the results for each measurement.
2. Set to the maximum power setting and enable the EUT transmit continuously
3. Use the following spectrum analyzer settings:
 Span = approximately 2 to 3 times the 20 dB bandwidth, centered on a hopping channel
 RBW \geq 1% of the 20 dB bandwidth, VBW \geq RBW
 Sweep = auto, Detector function = peak, Trace = max hold
4. Measure and record the results in the test report.

TEST MODE:

Please refer to the clause 4.1

TEST RESULTS

☒ Passed ☐ Not Applicable



5.4. Radiated Emission

LIMIT

FCC CFR Title 47 Part 15 Subpart C Section 15.209

Limit for frequency below 30MHz:

Frequency	Limit (uV/m)	Measurement Distance(m)	Remark
0.009~0.490	2400/F(kHz)	300	Quasi-peak
0.490~1.705	24000/F(kHz)	30	Quasi-peak
1.705~30.0	30	30	Quasi-peak

Note: Limit dBuV/m @3m = Limit dBuV/m @300m + 40*log(300/3)= Limit dBuV/m @300m +80,

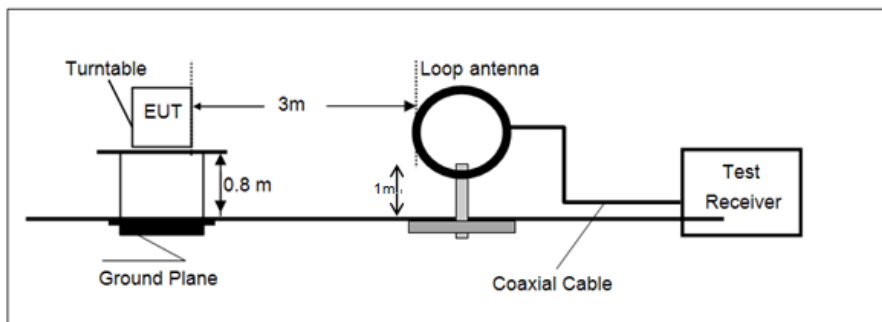
Limit dBuV/m @3m = Limit dBuV/m @30m +40*log(30/3)= Limit dBuV/m @30m + 40.

Limit for frequency above 30MHz:

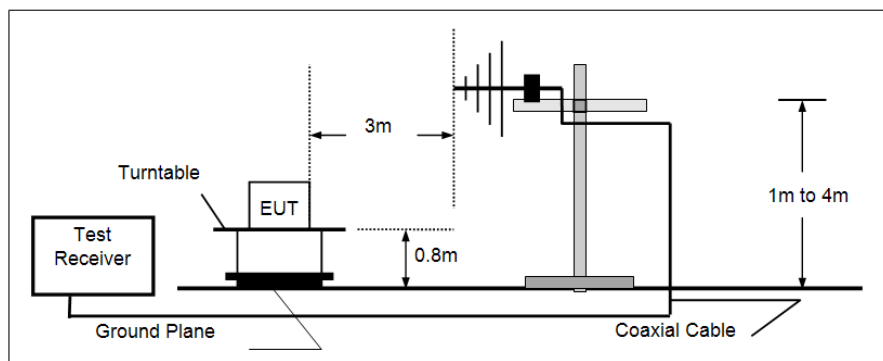
Frequency	Limit (dBuV/m@3m)	Remark
30MHz~88MHz	40.00	Quasi-peak
88MHz~216MHz	43.50	Quasi-peak
216MHz~960MHz	46.00	Quasi-peak
960MHz-1GHz	54.00	Quasi-peak

TEST CONFIGURATION

- 9 kHz ~ 30 MHz



- 30 MHz ~ 1 GHz



TEST PROCEDURE

1. The EUT was setup and tested according to ANSI C63.10 requirements.
2. The EUT is placed on a turn table which is 0.8 meter above ground for below 1 GHz, and 1.5 m for above 1 GHz. The turn table is rotated 360 degrees to determine the position of the maximum emission level.
3. The EUT was set 3 meters from the receiving antenna, which was mounted on the top of a variable height antenna tower.
4. For each suspected emission, the EUT was arranged to its worst case and then tune the Antenna tower (from 1 m to 4 m) and turntable (from 0 degree to 360 degrees) to find the maximum reading. A pre-amp and a high pass filter are used for the test in order to get better signal level to comply with the guidelines.
5. Set to the maximum power setting and enable the EUT transmit continuously.
6. Use the following spectrum analyzer settings
 - (1) Span shall wide enough to fully capture the emission being measured;
 - (2) Below 30MHz:
RBW=10 kHz, VBW=30 kHz, Sweep=auto, Detector function=peak, Trace=max hold;
 - (3) 30MHz to 1 GHz:
RBW=120 kHz, VBW=300 kHz, Sweep=auto, Detector function=peak, Trace=max hold;
If the emission level of the EUT measured by the peak detector is 3 dB lower than the applicable limit, the peak emission level will be reported. Otherwise, the emission measurement will be repeated using the quasi-peak detector and reported.
 - (4) From 1 GHz to 10th harmonic:
RBW=1MHz, VBW=3MHz Peak detector for Peak value.
RBW=1MHz, VBW=3MHz RMS detector for Average value.

TEST MODE:

Please refer to the clause 4.1

TEST RESULTS

☒ Passed ☐ Not Applicable

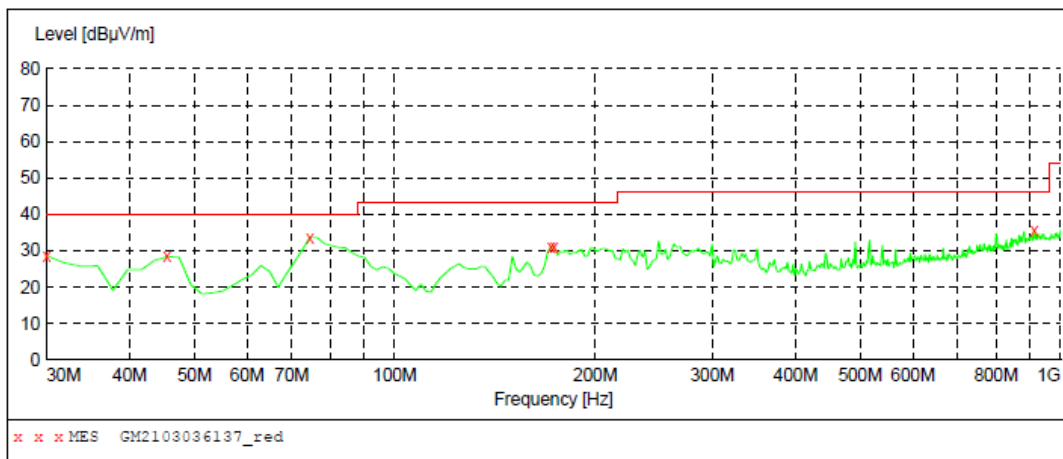
Below 30MHz:

Mark	Frequency (MHz)	Reading (dBuA)	Antenna (dB)	Cable (dB)	Preamp (dB)	Level (dBuA/m)	Limit (dBuA/m)	Over Limit	Remark
1	0.02	24.40	22.28	0.20	0.00	46.98	121.58	-74.60	Peak
2	0.03	28.20	22.34	0.21	0.00	50.75	118.06	-67.31	Peak
3	0.12	45.16	22.27	0.22	0.00	67.65	106.02	-38.37	Peak
4	0.87	21.24	22.20	0.30	0.00	43.74	68.81	-25.07	Peak
5	2.46	12.84	22.20	0.33	0.00	35.37	69.54	-34.17	Peak
6	8.73	11.69	21.80	0.44	0.00	33.93	69.54	-35.61	Peak

Above 30MHz:

Polarization:

Vertical

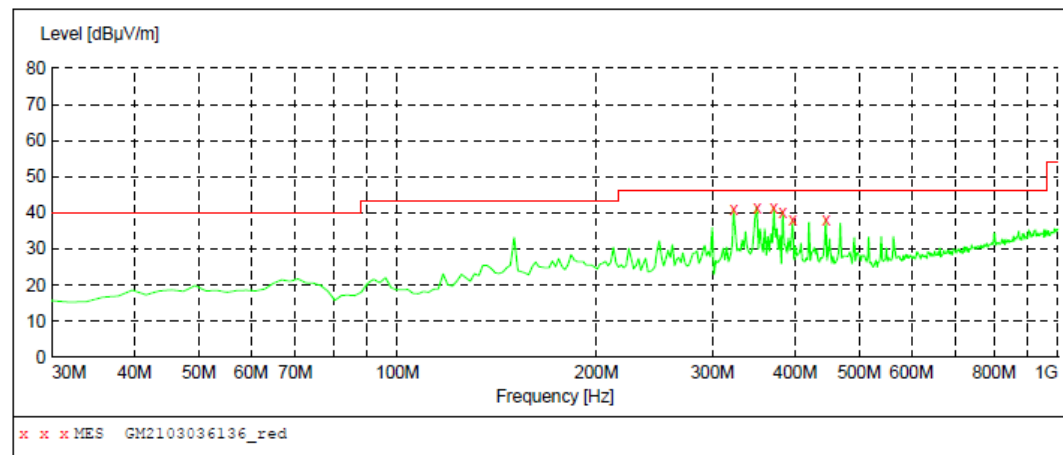
**MEASUREMENT RESULT: "GM2103036137_red"**

3/3/2021 11:56PM

Frequency MHz	Level dBμV/m	Transd dB	Limit dBμV/m	Margin dB	Det.	Height cm	Azimuth deg	Polarization
30.000000	28.70	-12.4	40.0	11.3	QP	100.0	172.00	VERTICAL
45.520000	28.40	-8.9	40.0	11.6	QP	100.0	77.00	VERTICAL
74.620000	33.70	-14.8	40.0	6.3	QP	100.0	255.00	VERTICAL
171.620000	31.10	-12.9	43.5	12.4	QP	100.0	267.00	VERTICAL
173.560000	30.90	-12.7	43.5	12.6	QP	100.0	318.00	VERTICAL
912.700000	35.60	7.4	46.0	10.4	QP	100.0	340.00	VERTICAL

Polarization:

Horizontal

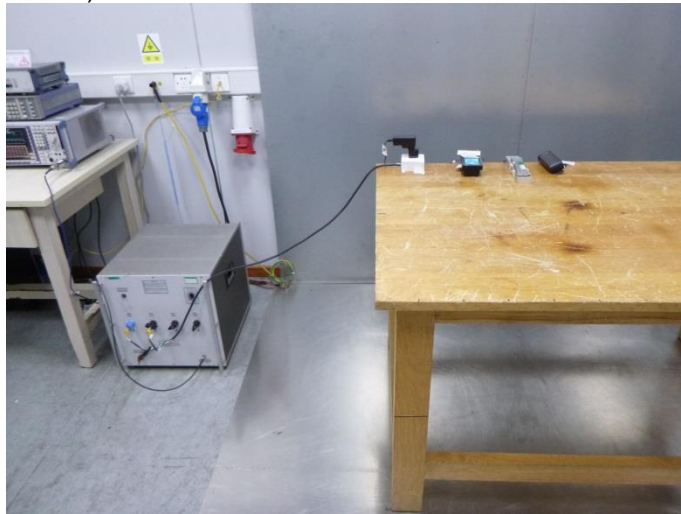
**MEASUREMENT RESULT: "GM2103036136_red"**

3/3/2021 11:54PM

Frequency MHz	Level dBμV/m	Transd dB	Limit dBμV/m	Margin dB	Det.	Height cm	Azimuth deg	Polarization
322.940000	40.80	-6.4	46.0	5.2	QP	100.0	88.00	HORIZONTAL
350.100000	41.60	-5.1	46.0	4.4	QP	100.0	100.00	HORIZONTAL
371.440000	41.40	-5.1	46.0	4.6	QP	100.0	279.00	HORIZONTAL
383.080000	40.20	-4.8	46.0	5.8	QP	100.0	255.00	HORIZONTAL
396.660000	37.90	-4.1	46.0	8.1	QP	100.0	267.00	HORIZONTAL
445.160000	37.90	-2.9	46.0	8.1	QP	100.0	279.00	HORIZONTAL

6. TEST SETUP PHOTOS

Conducted Emissions (AC Mains)



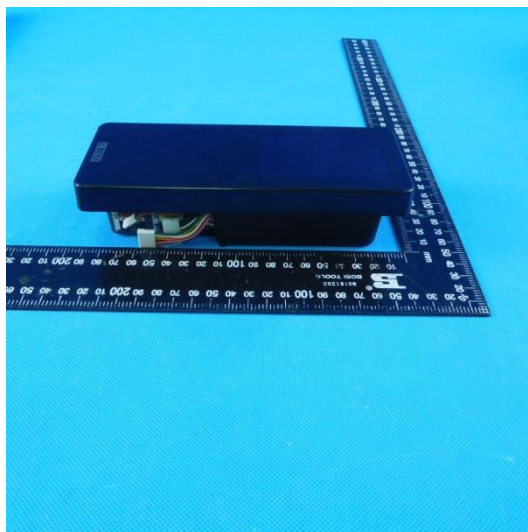
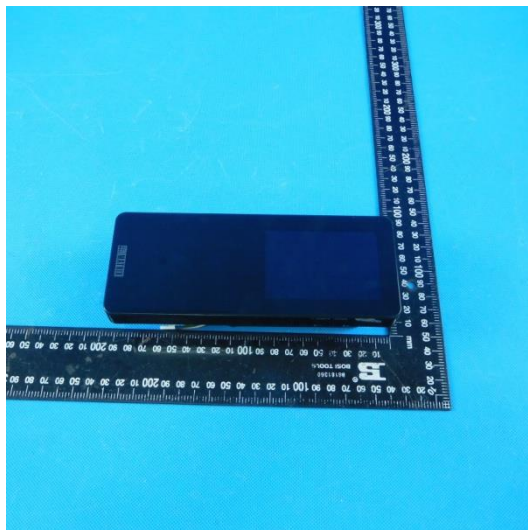
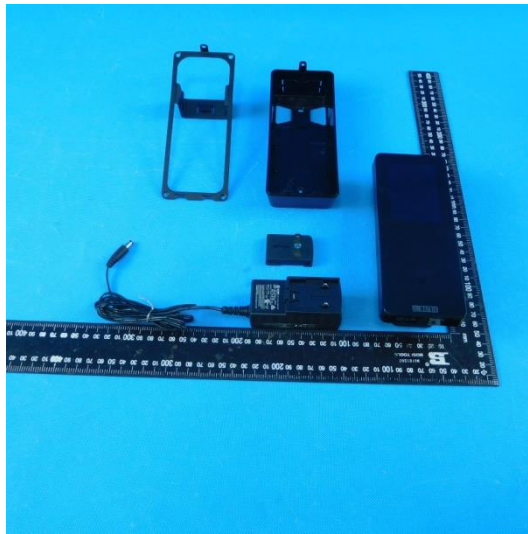
Radiated Emissions

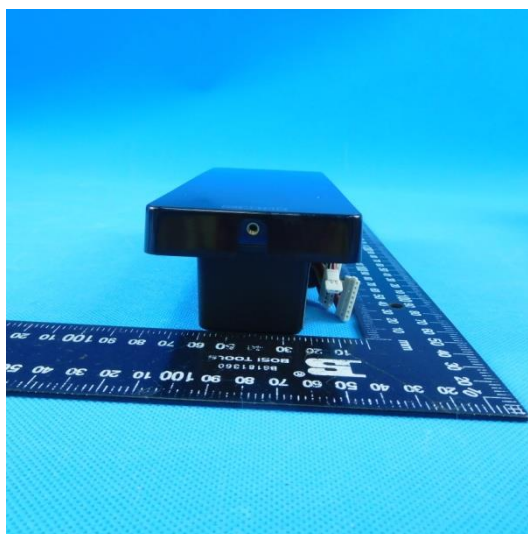
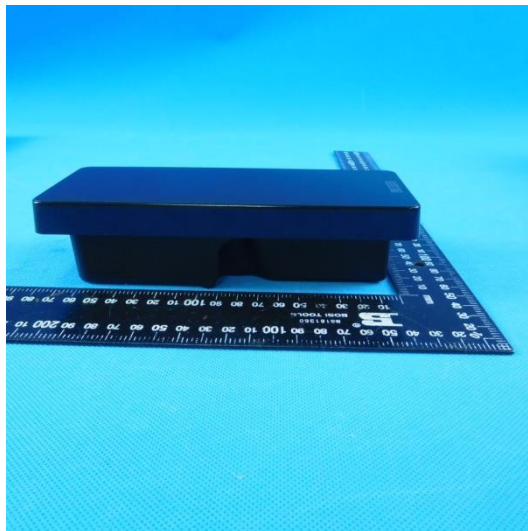
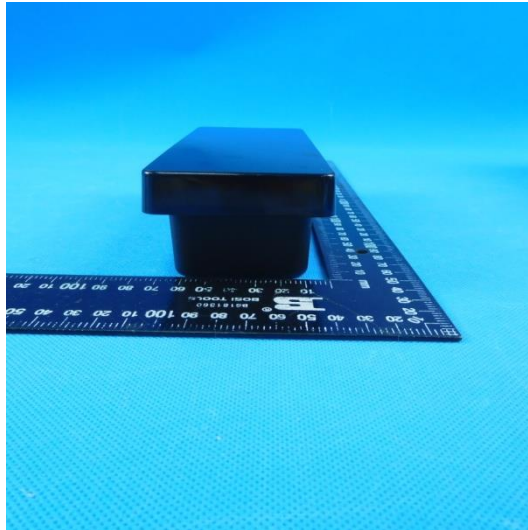


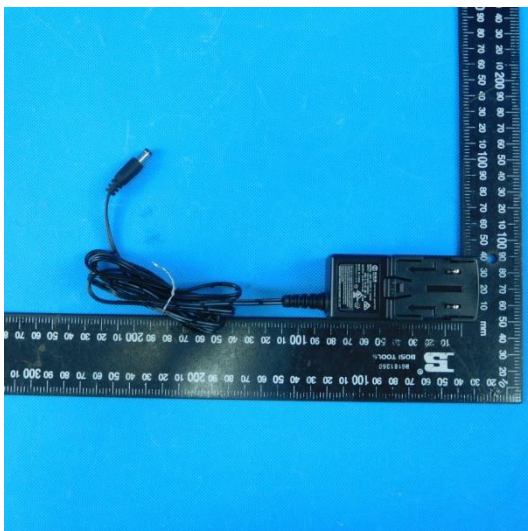
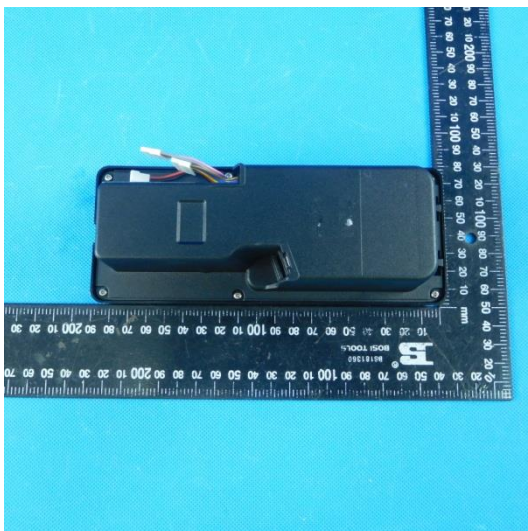


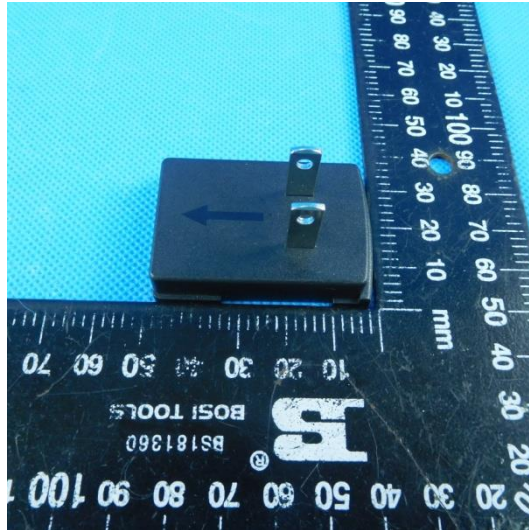
7. EXTERNAL AND INTERNAL PHOTOS OF THE EUT

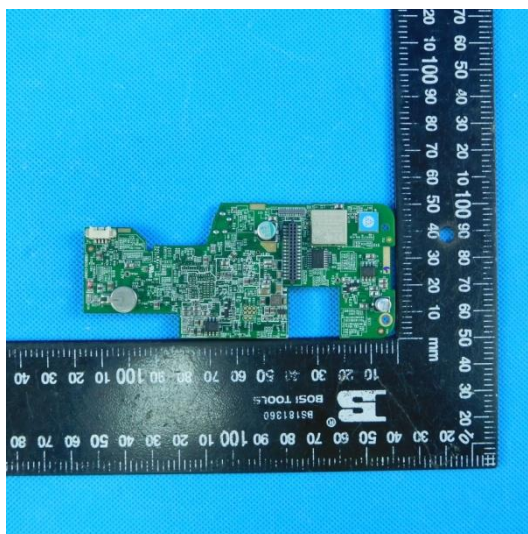
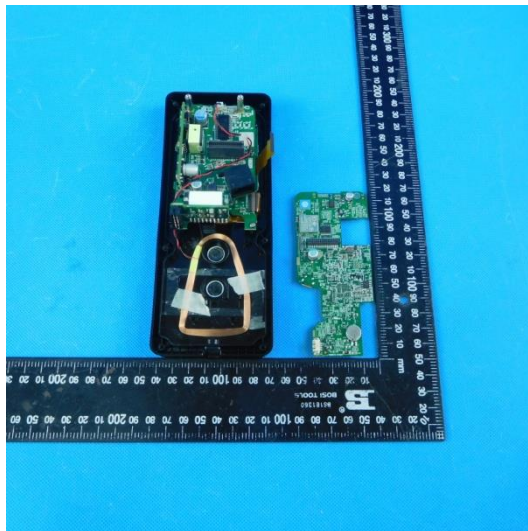
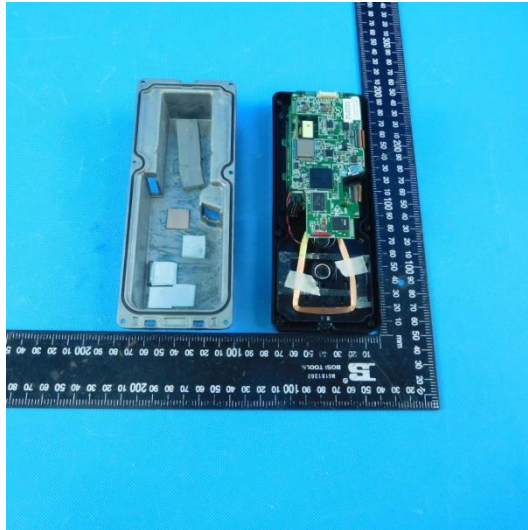
External Photos

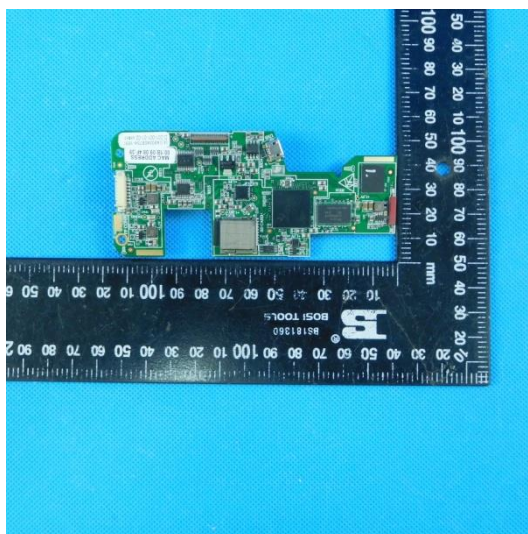
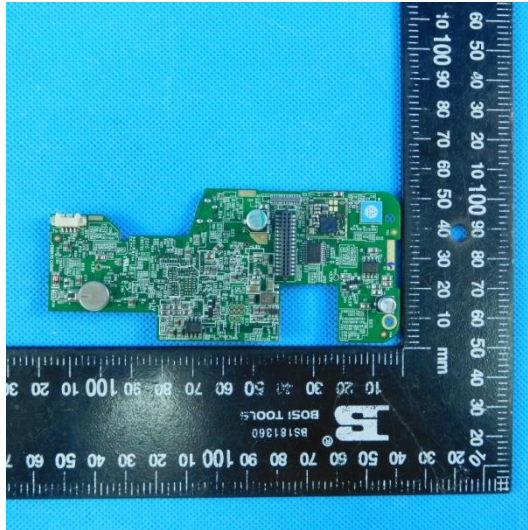


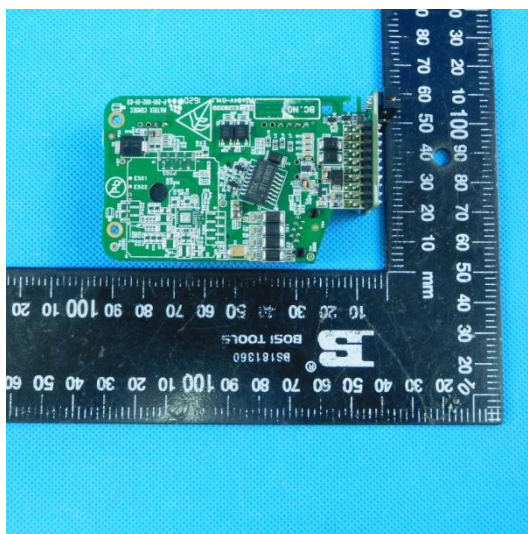
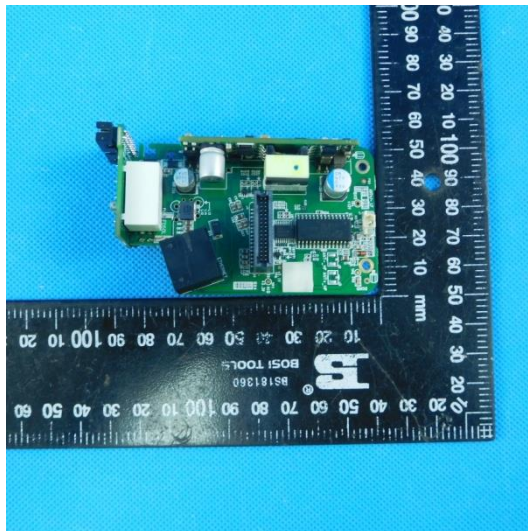
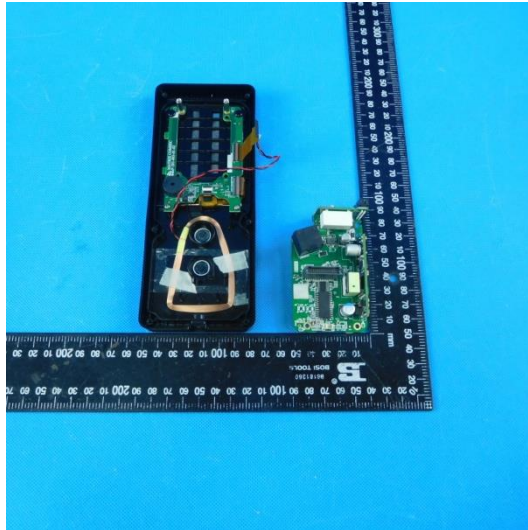


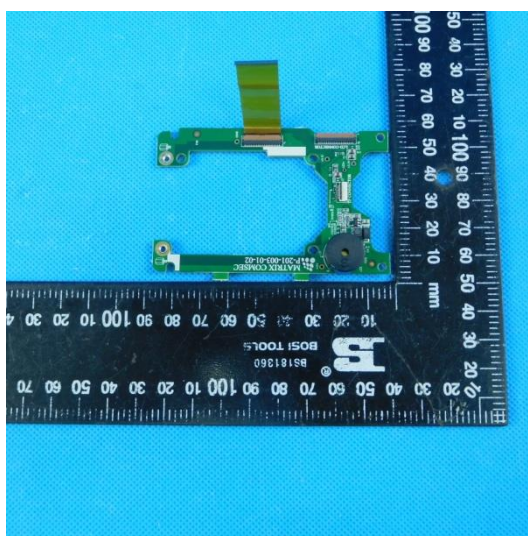


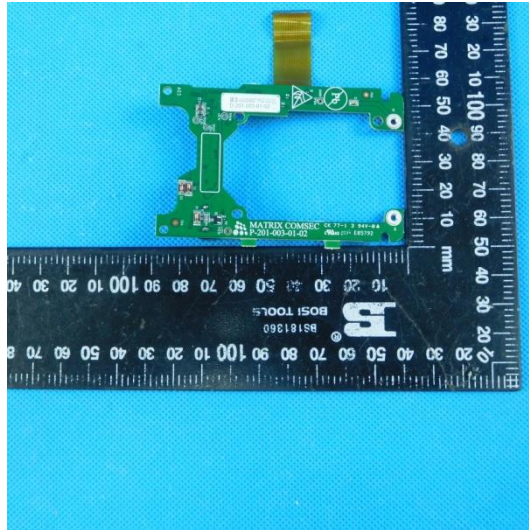


Internal Photos









-----End of Report-----