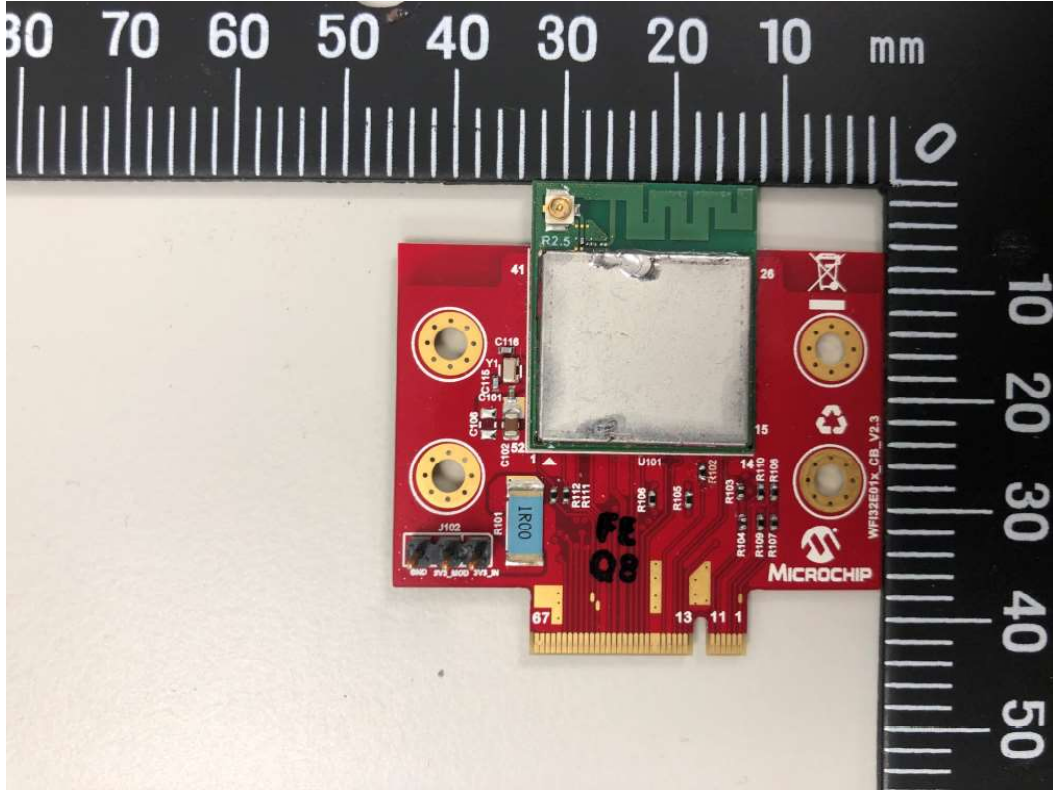


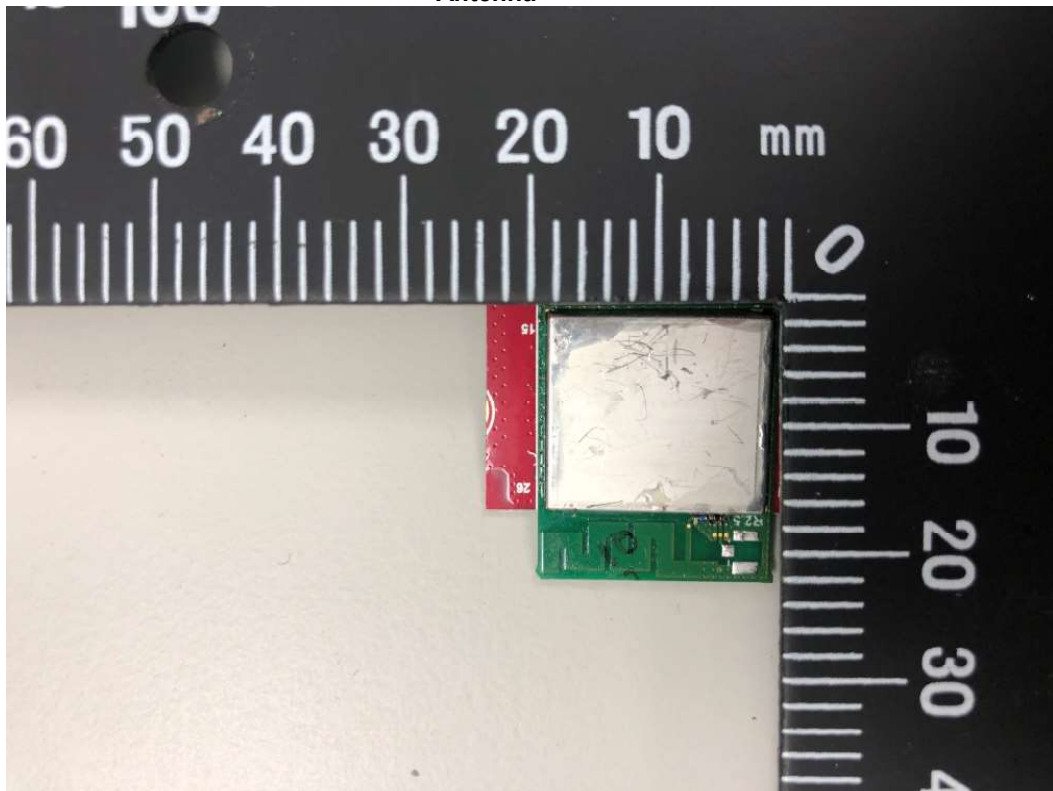
Product: 2.4GHz Wi-Fi® Module

Type Identification: WFI32E01PE, WFI32E01UE, WFI32E01PC, WFI32E01UC

Conducted sample for WFI32E01PC/ WFI32E01PE/ WFI32E01UC/
WFI32E01UE



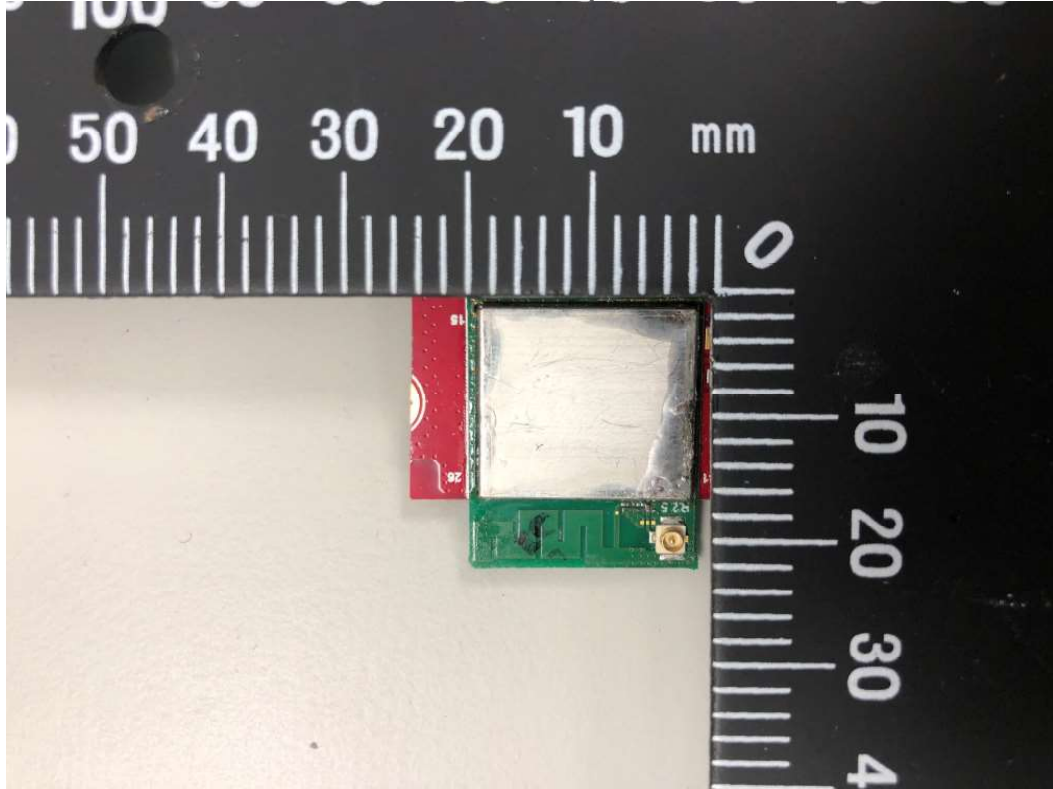
WFI32E01PC/ WFI32E01PE : Radiated Sample for PCB
Antenna



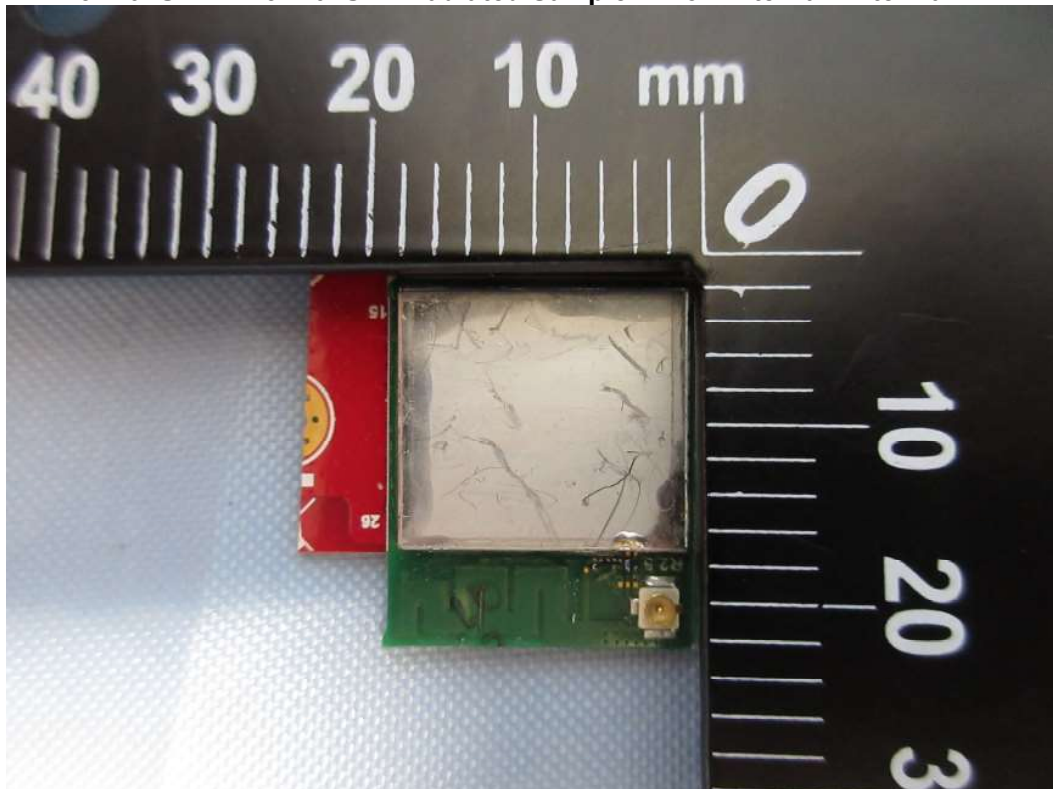
Product: 2.4GHz Wi-Fi® Module

Type Identification: WFI32E01PE, WFI32E01UE, WFI32E01PC, WFI32E01UC

WFI32E01UC/ WFI32E01UE : Radiated Sample #1 for External Antenna



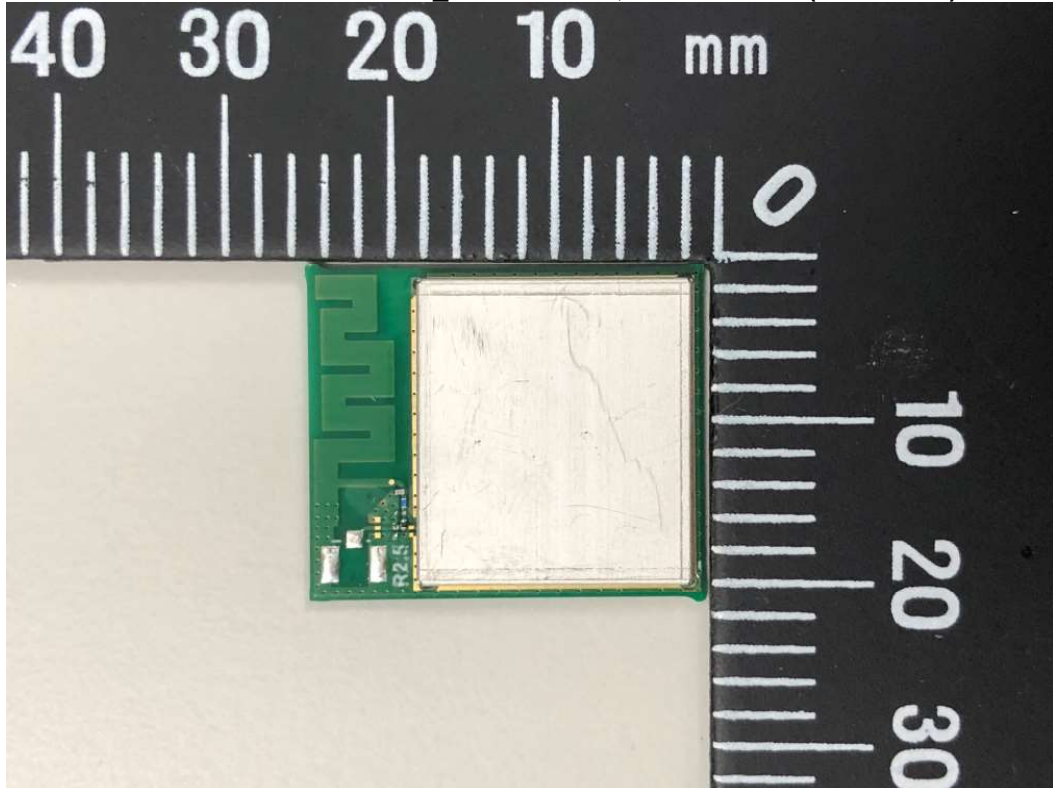
WFI32E01UC/ WFI32E01UE : Radiated Sample #2 for External Antenna



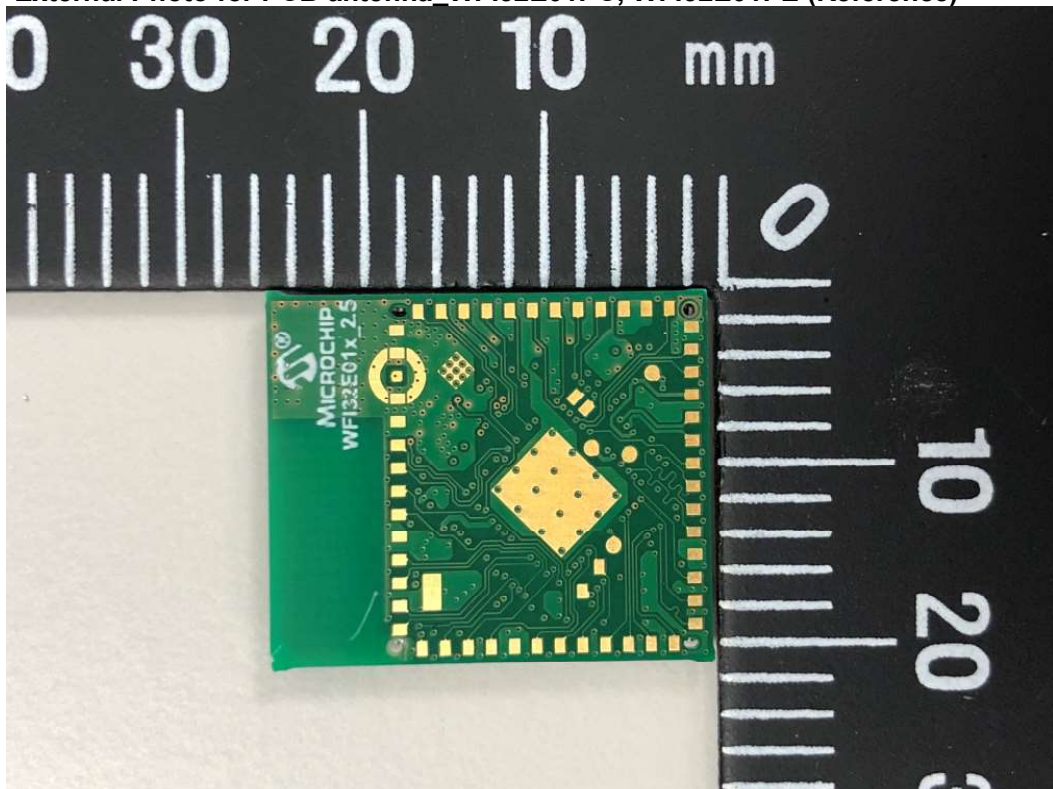
Product: 2.4GHz Wi-Fi® Module

Type Identification: WFI32E01PE, WFI32E01UE, WFI32E01PC, WFI32E01UC

External Photo for PCB antenna WFI32E01PC, WFI32E01PE (Reference)



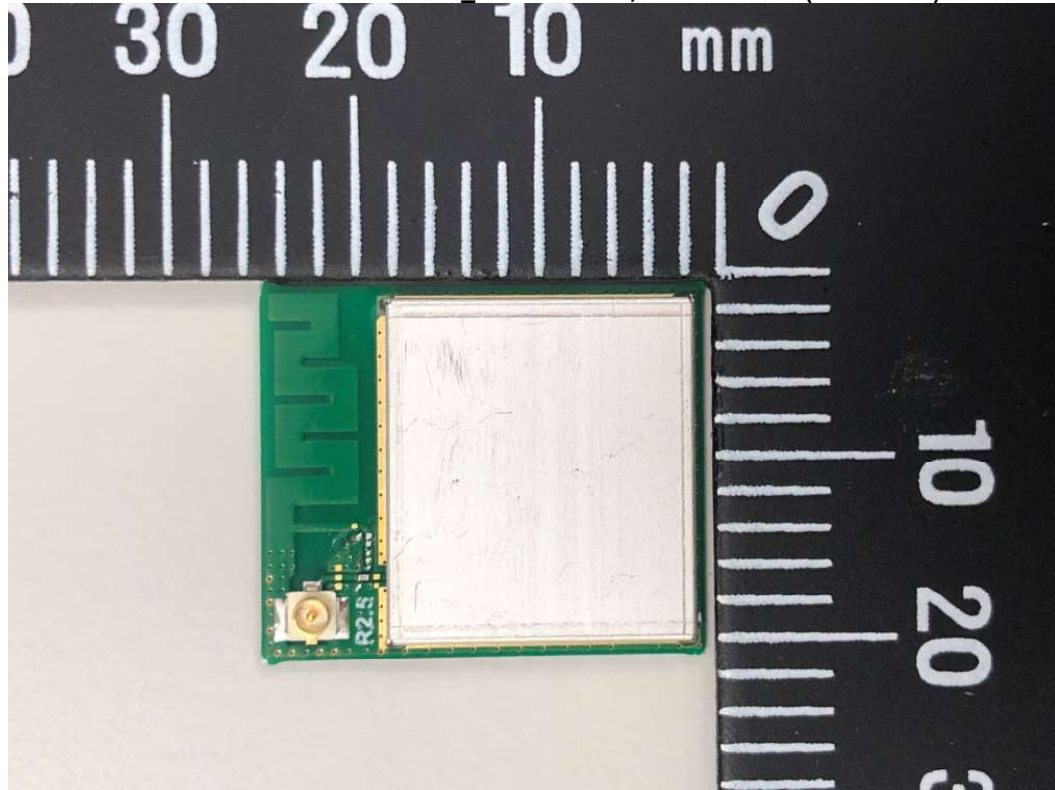
External Photo for PCB antenna WFI32E01PC, WFI32E01PE (Reference)



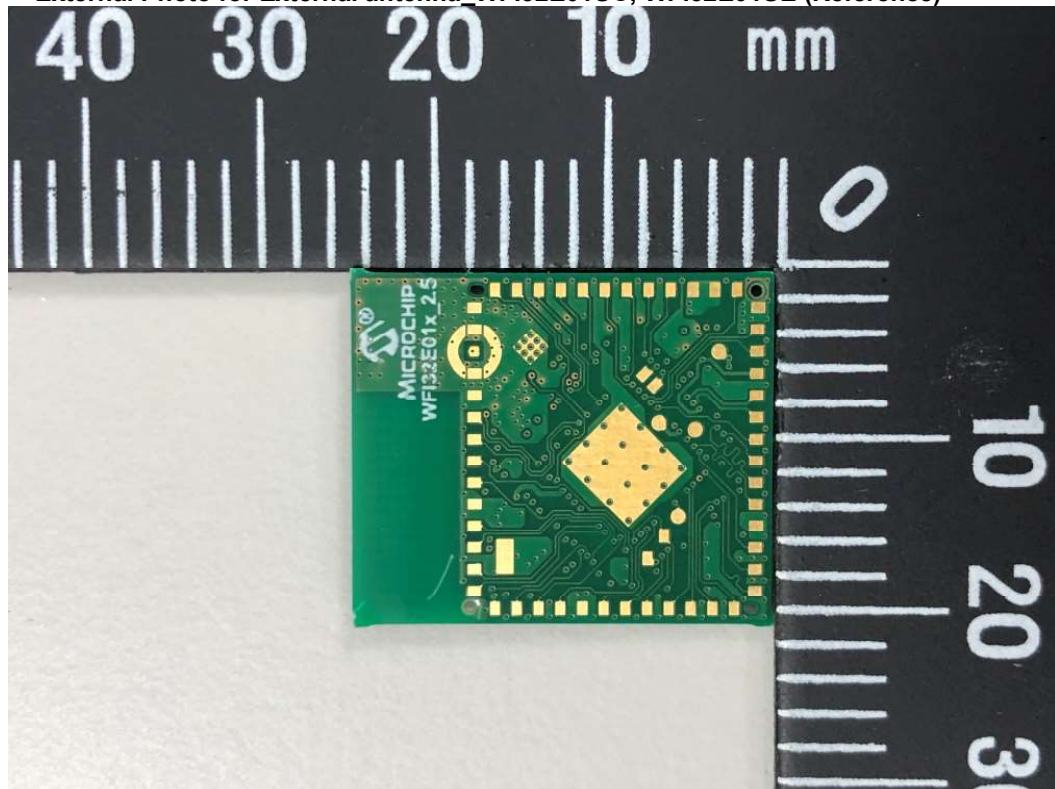
Product: 2.4GHz Wi-Fi® Module

Type Identification: WFI32E01PE, WFI32E01UE, WFI32E01PC, WFI32E01UC

External Photo for External antenna WFI32E01UC, WFI32E01UE (Reference)



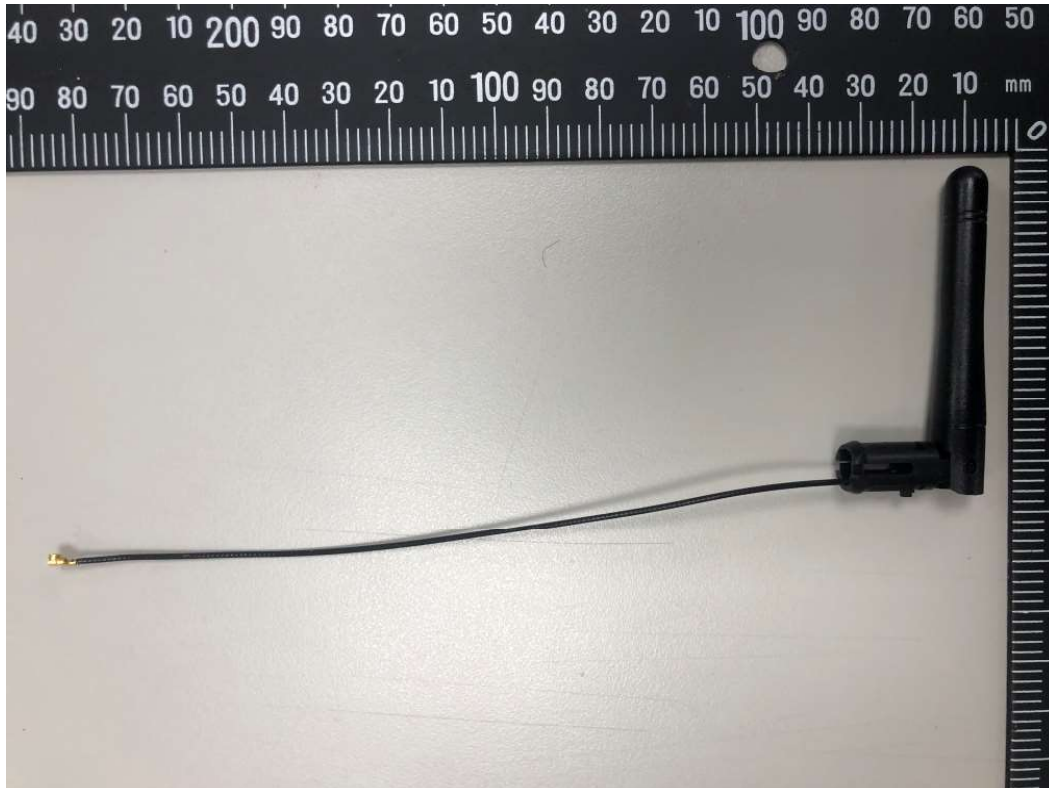
External Photo for External antenna WFI32E01UC, WFI32E01UE (Reference)



Product: 2.4GHz Wi-Fi® Module

Type Identification: WFI32E01PE, WFI32E01UE, WFI32E01PC, WFI32E01UC

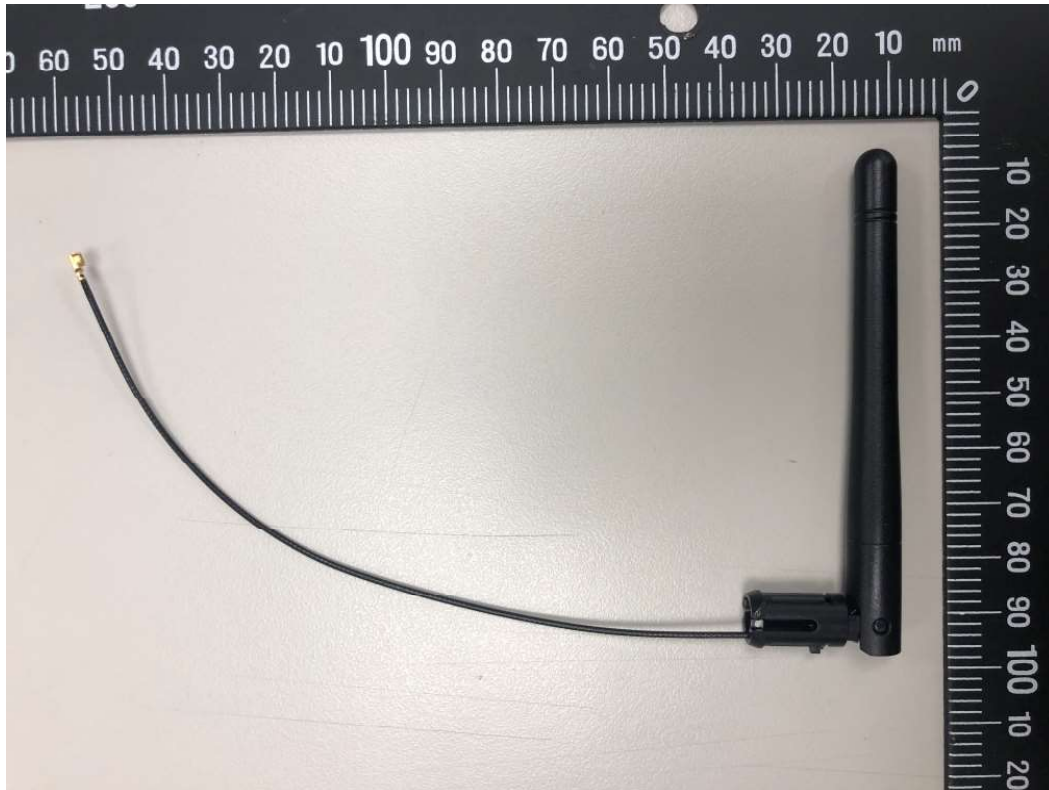
S/no.	P/N	Vendor	Antenna Gain @ 2.4GHz Band	Antenna type
1	RFA-02-L2H1	Alead/ Aristotle	2 dBi	Dipole



Product: 2.4GHz Wi-Fi® Module

Type Identification: WFI32E01PE, WFI32E01UE, WFI32E01PC, WFI32E01UC

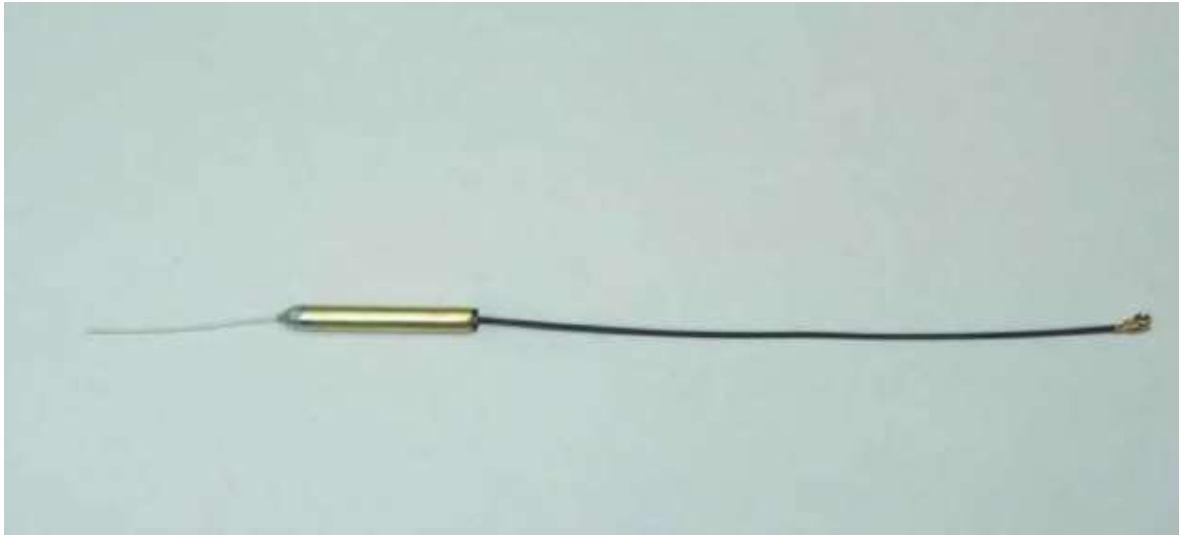
S/no.	P/N	Vendor	Antenna Gain @ 2.4GHz Band	Antenna type
2	RFA-02-C2H1-D034	Alead/ Aristotle	2 dBi	Dipole



Product: 2.4GHz Wi-Fi® Module

Type Identification: WFI32E01PE, WFI32E01UE, WFI32E01PC, WFI32E01UC

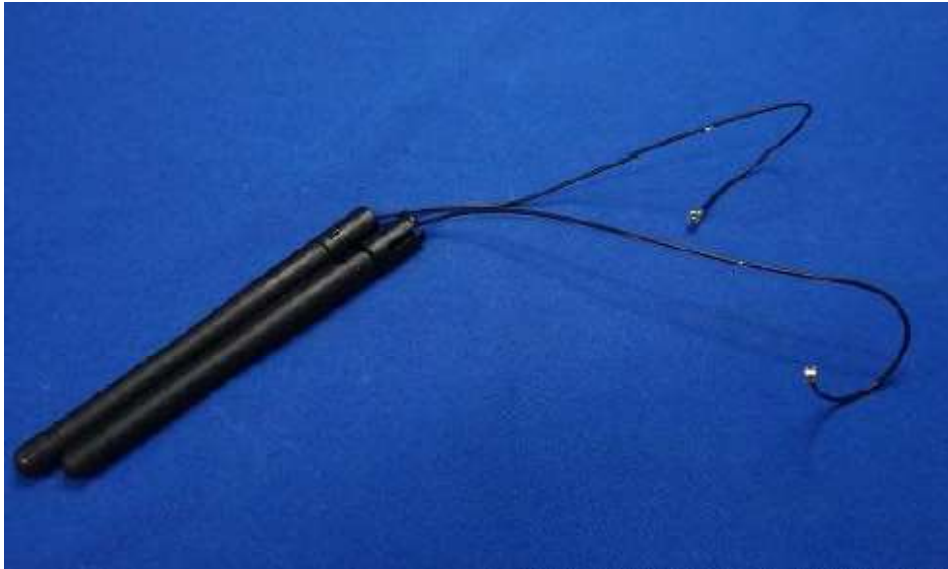
S/no.	P/N	Vendor	Antenna Gain @ 2.4GHz Band	Antenna type
3	RFA-02-D3	Alead/ Aristotle	2dBi	Dipole



Product: 2.4GHz Wi-Fi® Module

Type Identification: WFI32E01PE, WFI32E01UE, WFI32E01PC, WFI32E01UC

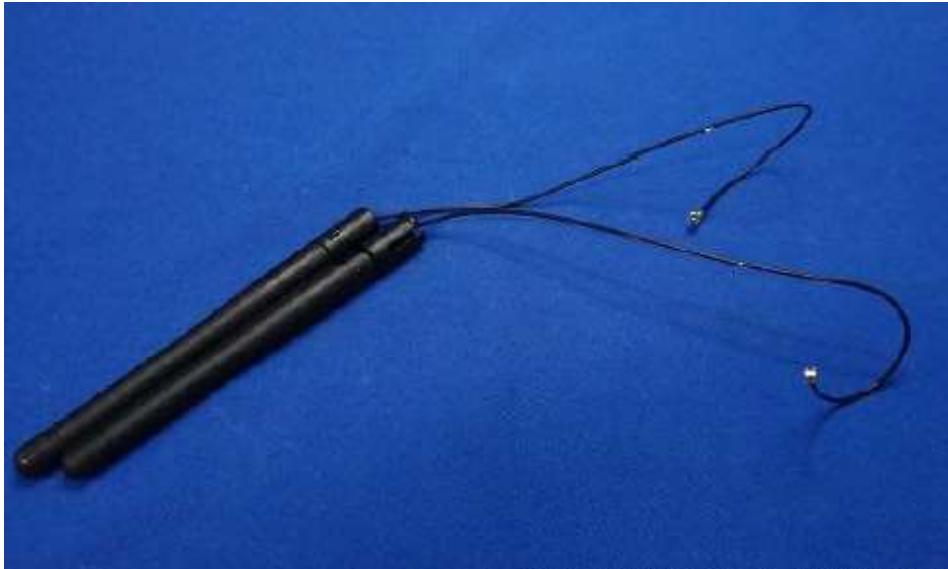
S/no.	P/N	Vendor	Antenna Gain @ 2.4GHz Band	Antenna type
4	RFDPA870920IMLB301	WALSIN	1.84 dBi	Dipole



Product: 2.4GHz Wi-Fi® Module

Type Identification: WFI32E01PE, WFI32E01UE, WFI32E01PC, WFI32E01UC

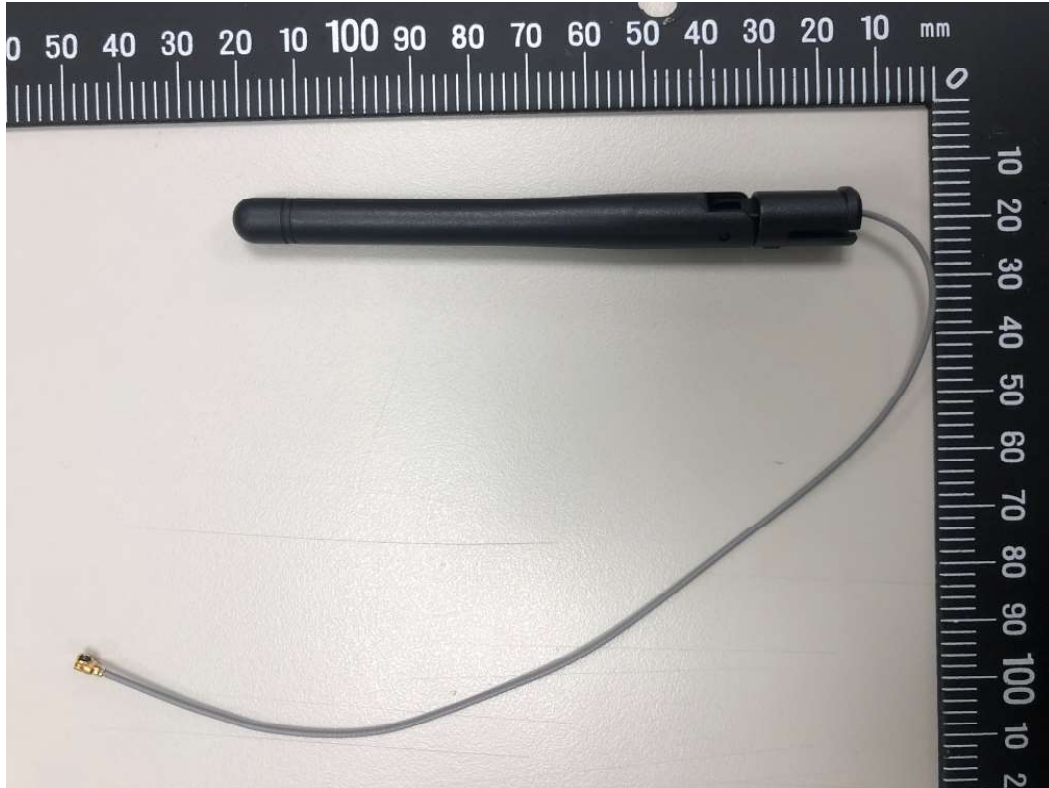
Sno.	P/N	Vendor	Antenna Gain @ 2.4GHz Band	Antenna type
5	RFDPA870920IMAB302	WALSIN	1.82 dBi	Dipole



Product: 2.4GHz Wi-Fi® Module

Type Identification: WFI32E01PE, WFI32E01UE, WFI32E01PC, WFI32E01UC

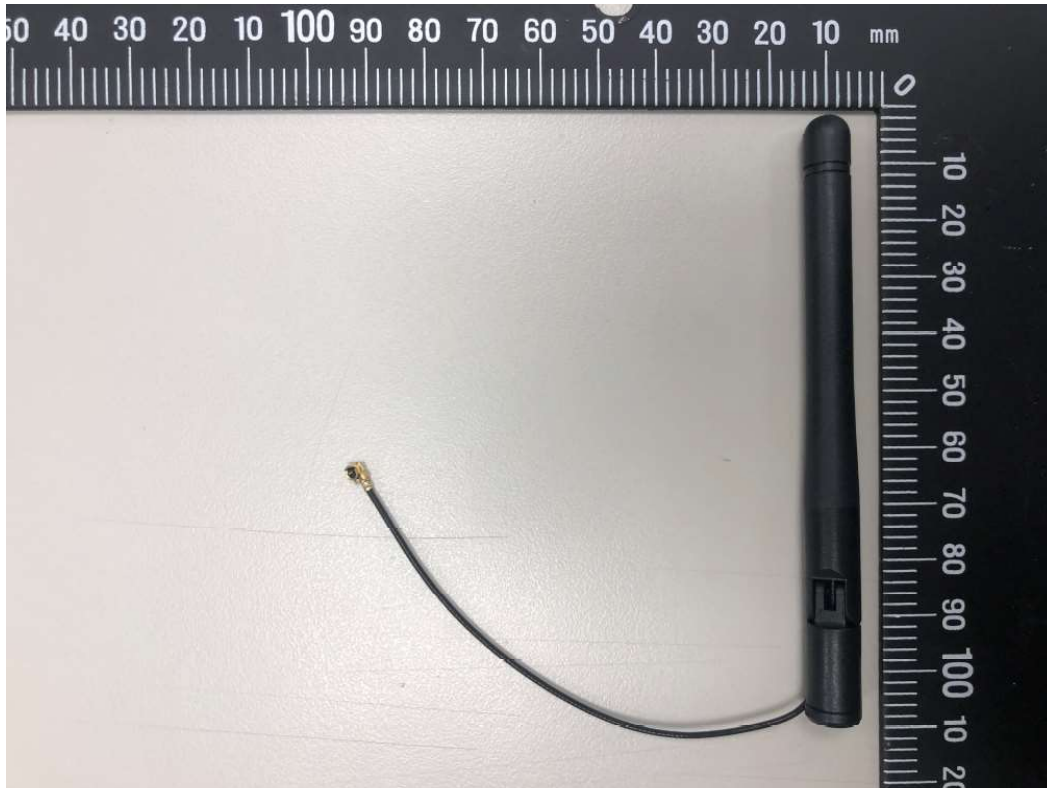
S/no.	P/N	Vendor	Antenna Gain @ 2.4GHz Band	Antenna type
6	RFDPA870920IMAB305	WALSIN	1.82 dBi	Dipole



Product: 2.4GHz Wi-Fi® Module

Type Identification: WFI32E01PE, WFI32E01UE, WFI32E01PC, WFI32E01UC

S/no.	P/N	Vendor	Antenna Gain @ 2.4GHz Band	Antenna type
7	RFDPA870910IMAB308	WALSIN	2 dBi	Dipole



Product: 2.4GHz Wi-Fi® Module

Type Identification: WFI32E01PE, WFI32E01UE, WFI32E01PC, WFI32E01UC

Sno.	P/N	Vendor	Antenna Gain @ 2.4GHz Band	Antenna type
8	RFA-02-C2M2	Alead/ Aristotle	2 dBi	Dipole



Product: 2.4GHz Wi-Fi® Module

Type Identification: WFI32E01PE, WFI32E01UE, WFI32E01PC, WFI32E01UC

Sno.	P/N	Vendor	Antenna Gain @ 2.4GHz Band	Antenna type
9	RN-SMA-S-RP	Microchip	0.56 dBi	Dipole



Product: 2.4GHz Wi-Fi® Module

Type Identification: WFI32E01PE, WFI32E01UE, WFI32E01PC, WFI32E01UC

Sno.	P/N	Vendor	Antenna Gain @ 2.4GHz Band	Antenna type
10	N/A	Microchip	2.51 dBi	PCB Trace - Inverted F

