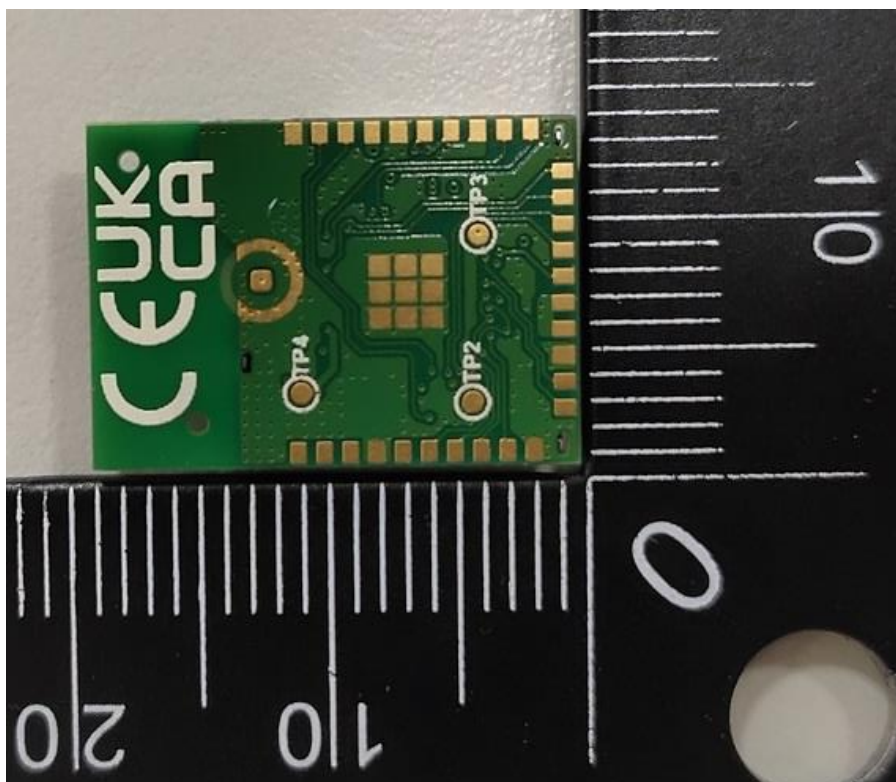
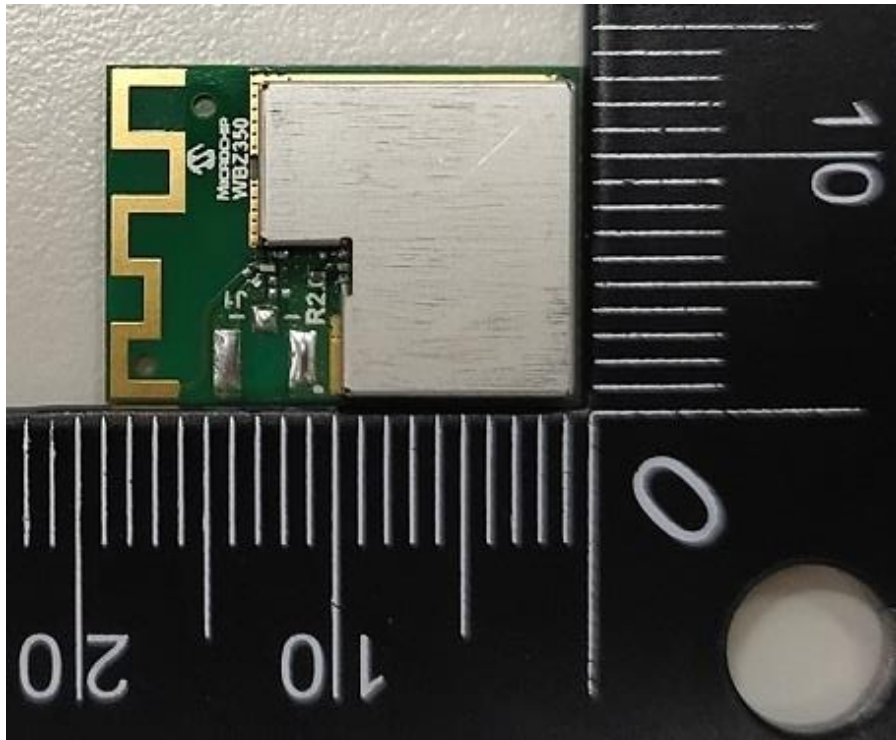


CN23I8SK (P15C-BLE) 001
CN23I8SK (P15C-ZigBee) 001
CN23I8SK (FCC-MPE) 001
CN23XR9U (RSS247-BLE) 001
CN23XR9U (RSS247-ZigBee) 001
CN23XR9U (ISED-MPE) 001

Product: Wireless MCU module with BLE 5.2 compliant and Zigbee 3.0 Radio
Type Identification: WBZ350PE,WBZ350UE,WBZ350PC,WBZ350UC,RNBD350PE,RNBD350UE
,RNBD350PC,RNBD350UC

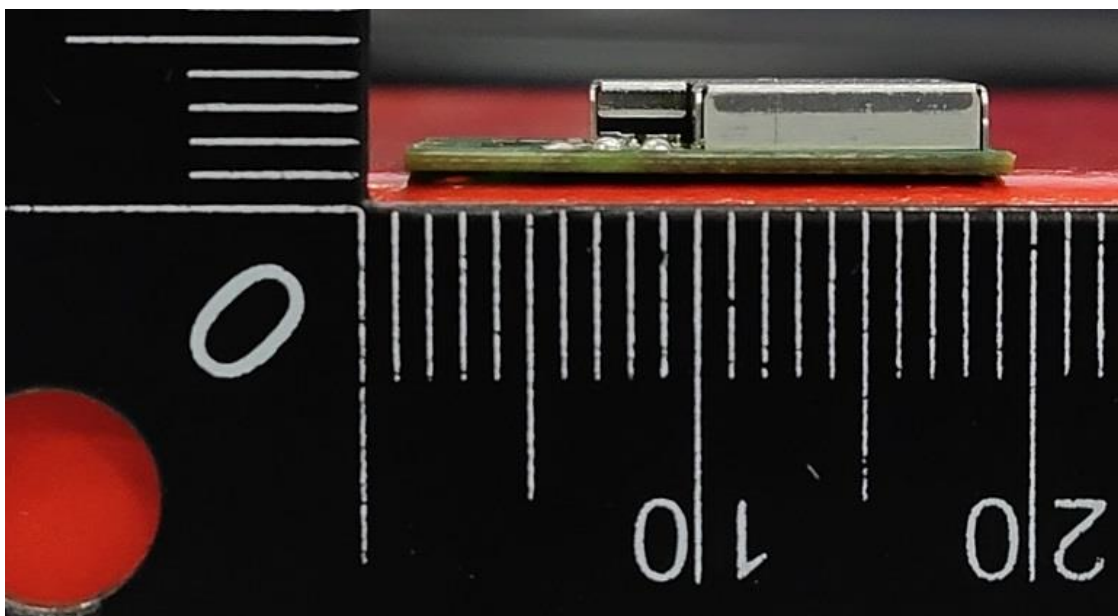
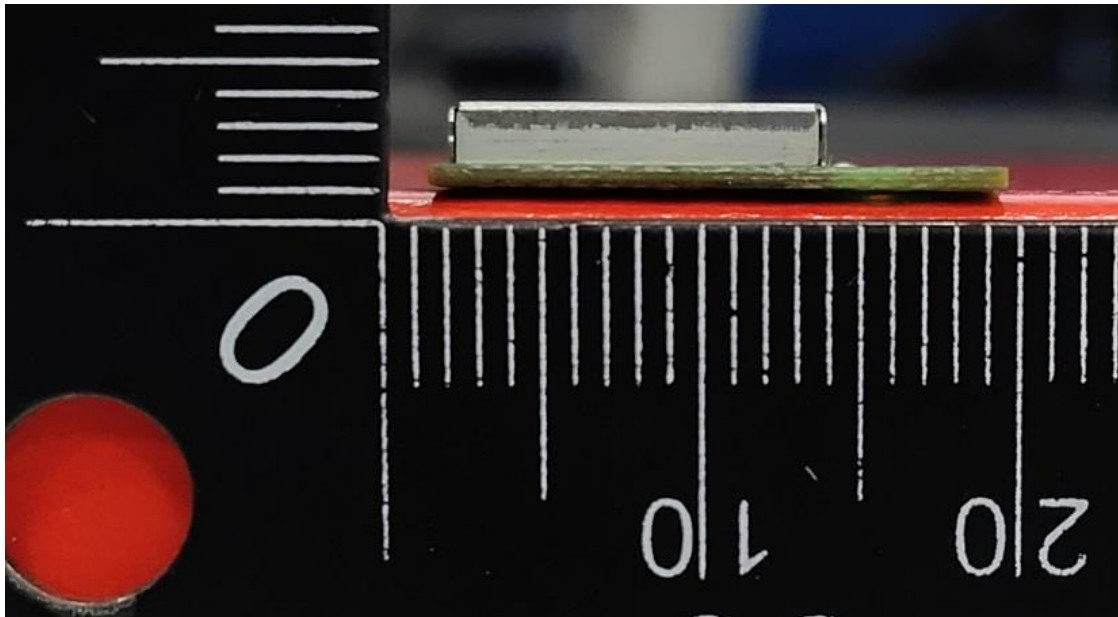
WBZ350PX Series



CN23I8SK (P15C-BLE) 001
CN23I8SK (P15C-ZigBee) 001
CN23I8SK (FCC-MPE) 001
CN23XR9U (RSS247-BLE) 001
CN23XR9U (RSS247-ZigBee) 001
CN23XR9U (ISED-MPE) 001

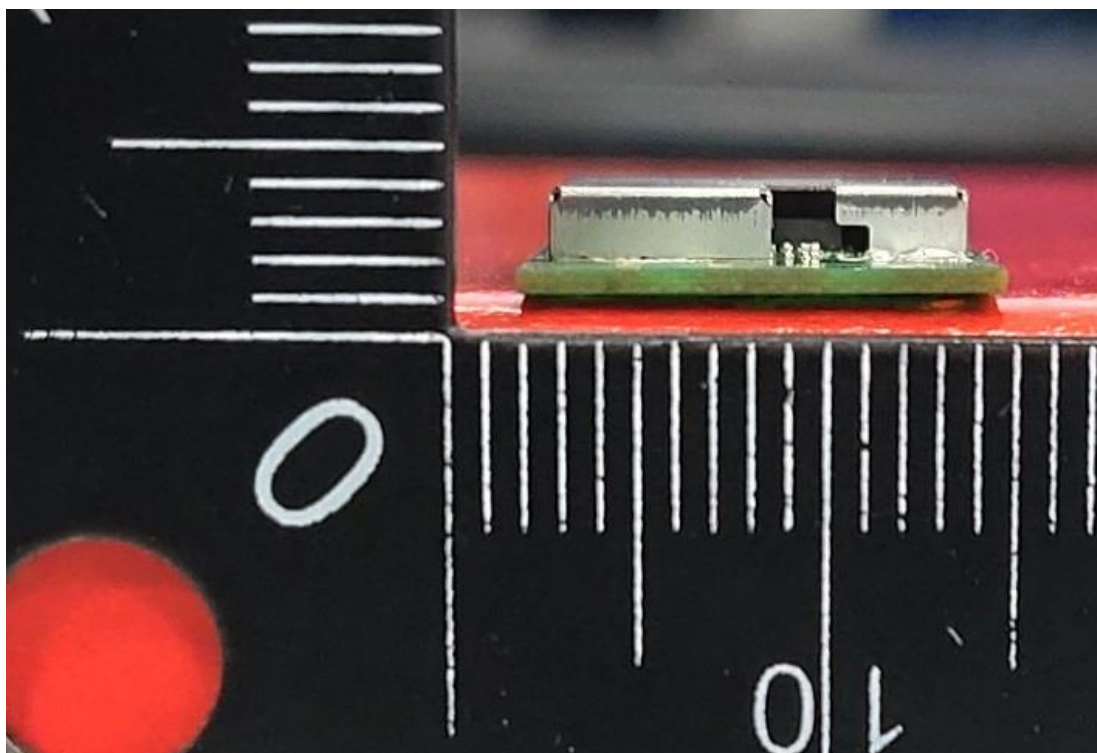
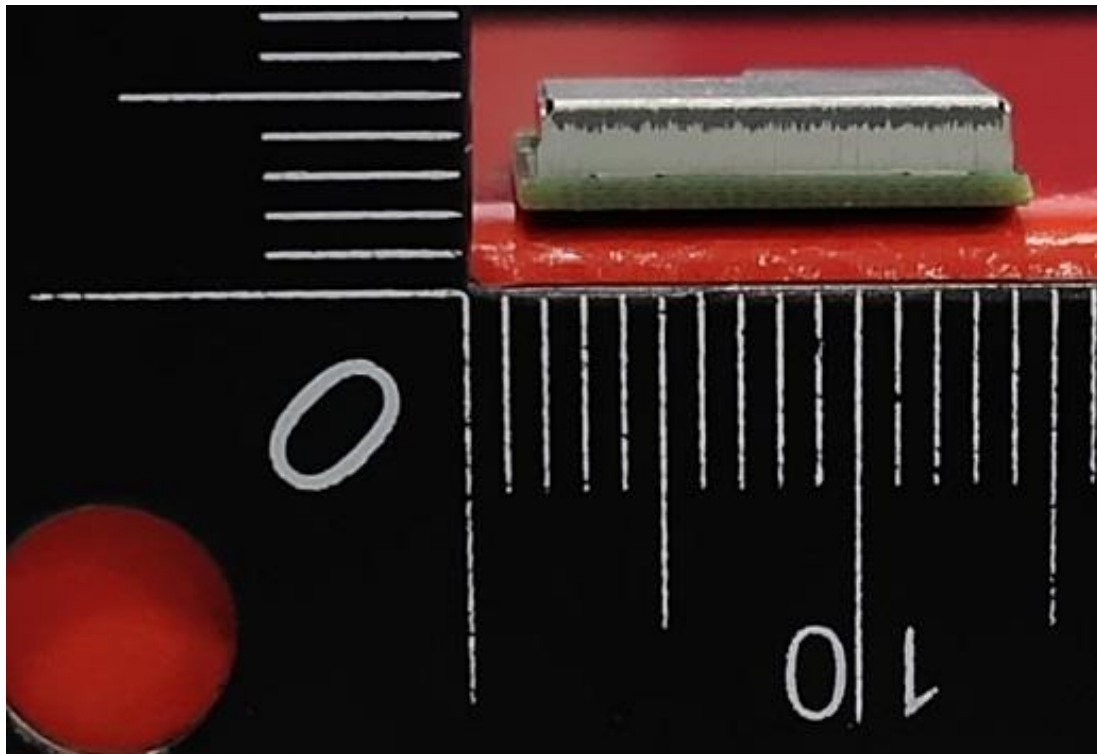
Page 2 of 18

Product: Wireless MCU module with BLE 5.2 compliant and Zigbee 3.0 Radio
Type Identification: WBZ350PE, WBZ350UE, WBZ350PC, WBZ350UC, RNBD350PE, RNBD350UE, RNBD350PC, RNBD350UC



CN23I8SK (P15C-BLE) 001
CN23I8SK (P15C-ZigBee) 001
CN23I8SK (FCC-MPE) 001
CN23XR9U (RSS247-BLE) 001
CN23XR9U (RSS247-ZigBee) 001
CN23XR9U (ISED-MPE) 001

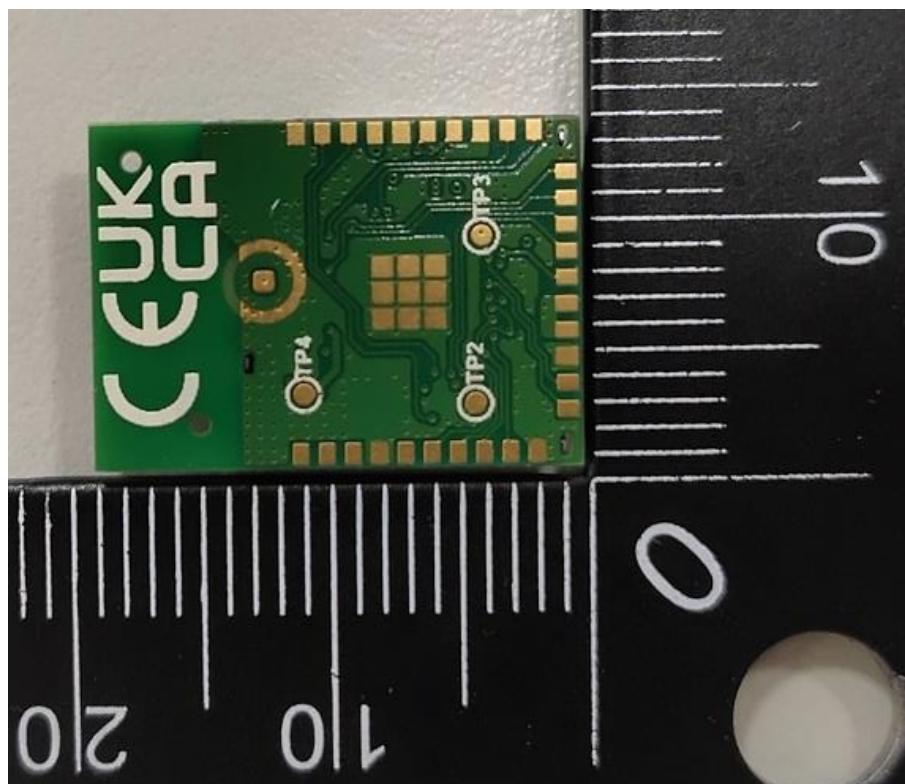
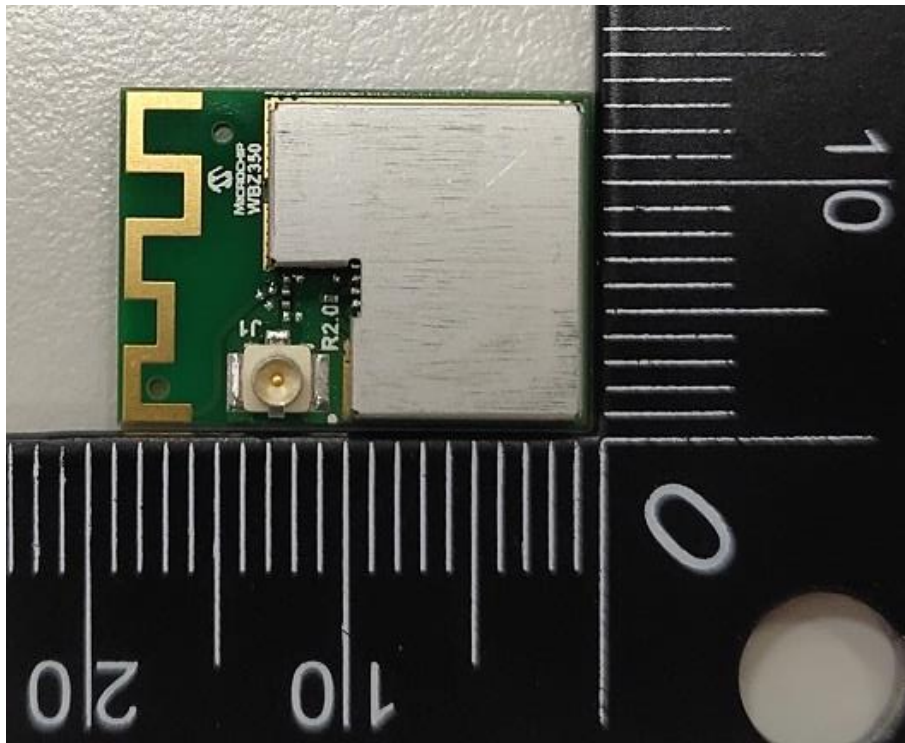
Product: Wireless MCU module with BLE 5.2 compliant and Zigbee 3.0 Radio
Type Identification: WBZ350PE, WBZ350UE, WBZ350PC, WBZ350UC, RNBD350PE, RNBD350UE, RNBD350PC, RNBD350UC



CN23I8SK (P15C-BLE) 001
CN23I8SK (P15C-ZigBee) 001
CN23I8SK (FCC-MPE) 001
CN23XR9U (RSS247-BLE) 001
CN23XR9U (RSS247-ZigBee) 001
CN23XR9U (ISED-MPE) 001

Product: Wireless MCU module with BLE 5.2 compliant and Zigbee 3.0 Radio
Type Identification: WBZ350PE, WBZ350UE, WBZ350PC, WBZ350UC, RNBD350PE, RNBD350UE, RNBD350PC, RNBD350UC

WBZ350UX Series



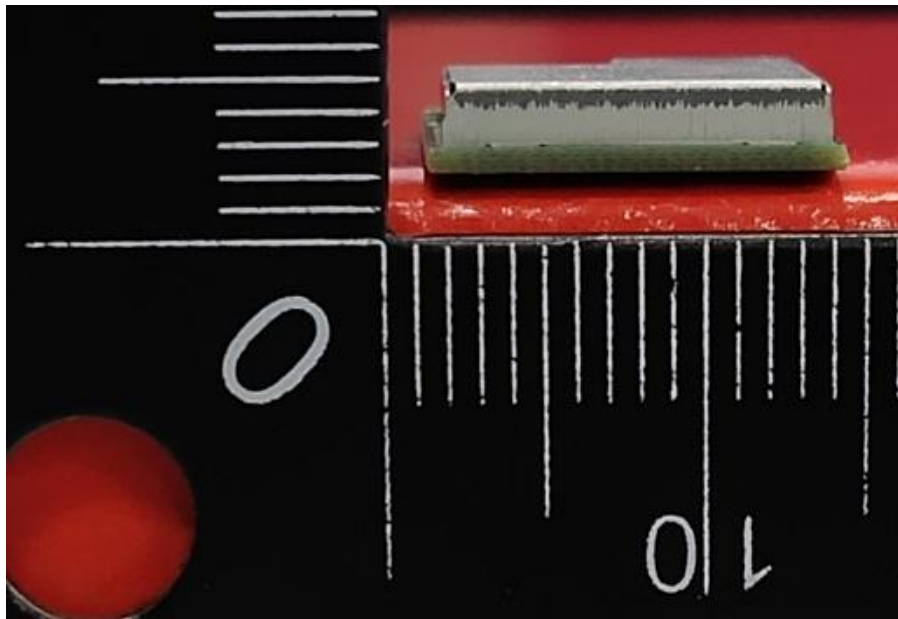
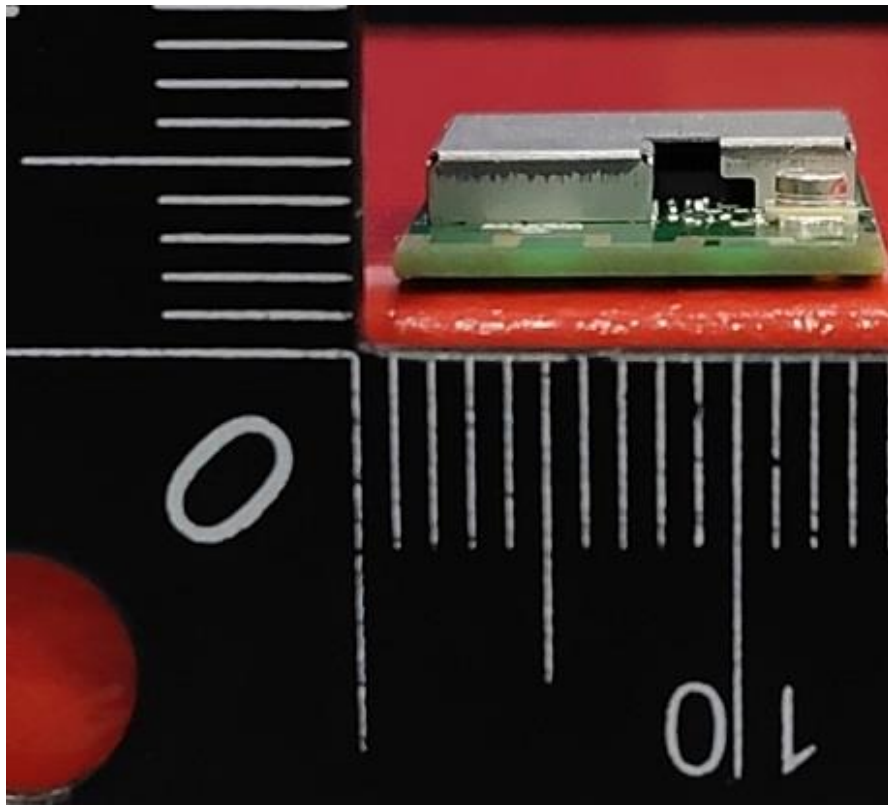
CN23I8SK (P15C-BLE) 001
CN23I8SK (P15C-ZigBee) 001
CN23I8SK (FCC-MPE) 001
CN23XR9U (RSS247-BLE) 001
CN23XR9U (RSS247-ZigBee) 001
CN23XR9U (ISED-MPE) 001

Product:

Wireless MCU module with BLE 5.2 compliant and Zigbee 3.0 Radio

Type Identification:

WBZ350PE, WBZ350UE, WBZ350PC, WBZ350UC, RNBD350PE, RNBD350UE, RNBD350PC, RNBD350UC



CN23I8SK (P15C-BLE) 001
CN23I8SK (P15C-ZigBee) 001
CN23I8SK (FCC-MPE) 001
CN23XR9U (RSS247-BLE) 001
CN23XR9U (RSS247-ZigBee) 001
CN23XR9U (ISED-MPE) 001

Product: Wireless MCU module with BLE 5.2 compliant and Zigbee 3.0 Radio
Type Identification: WBZ350PE, WBZ350UE, WBZ350PC, WBZ350UC, RNBD350PE, RNBD350UE, RNBD350PC, RNBD350UC

