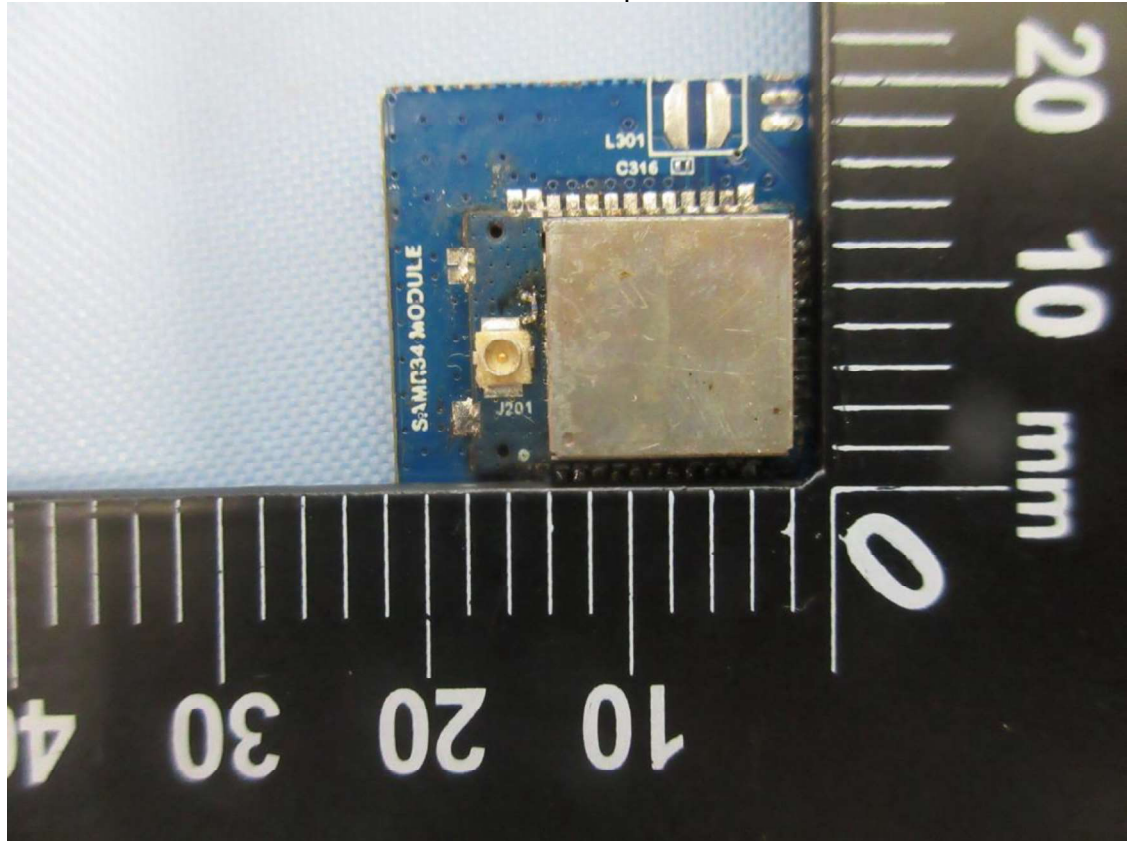
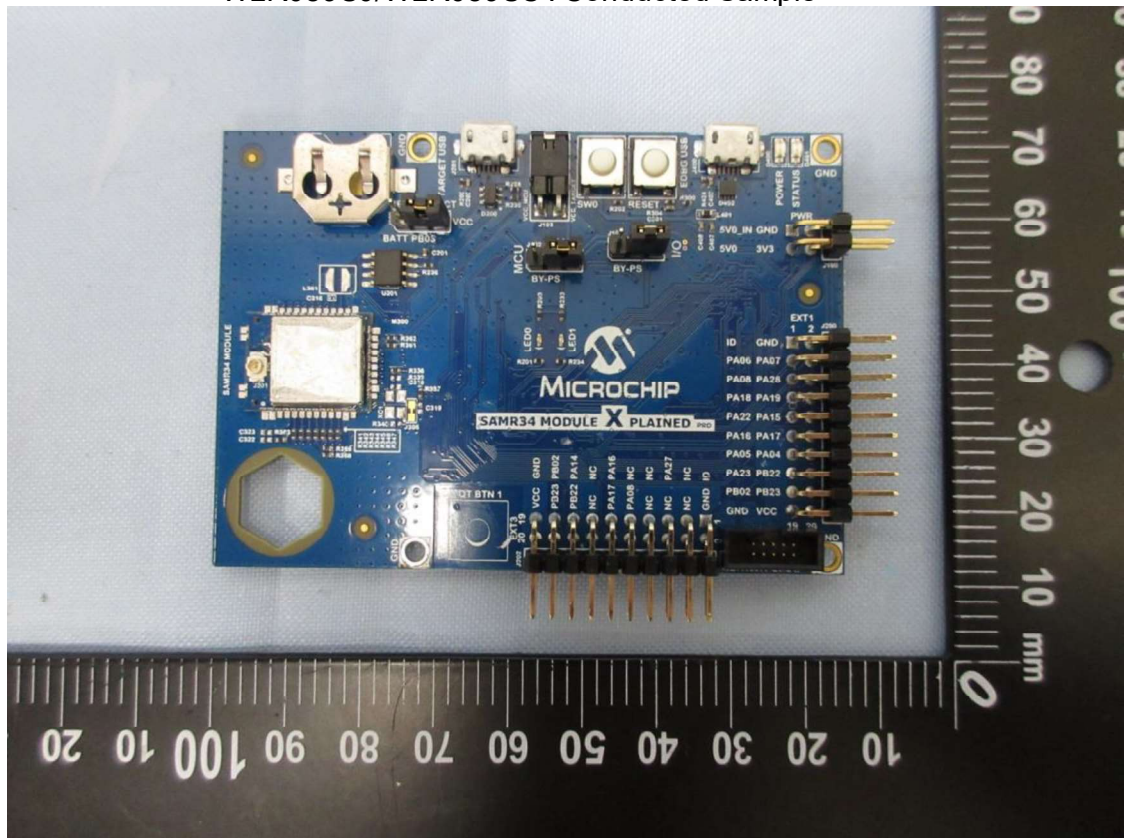


Product: Low Power LoRa® Sub-1GHz Module
Type Identification: WLR089U0, WLR089UC

WLR089U0/WLR089UC : Radiated Sample for External Antenna

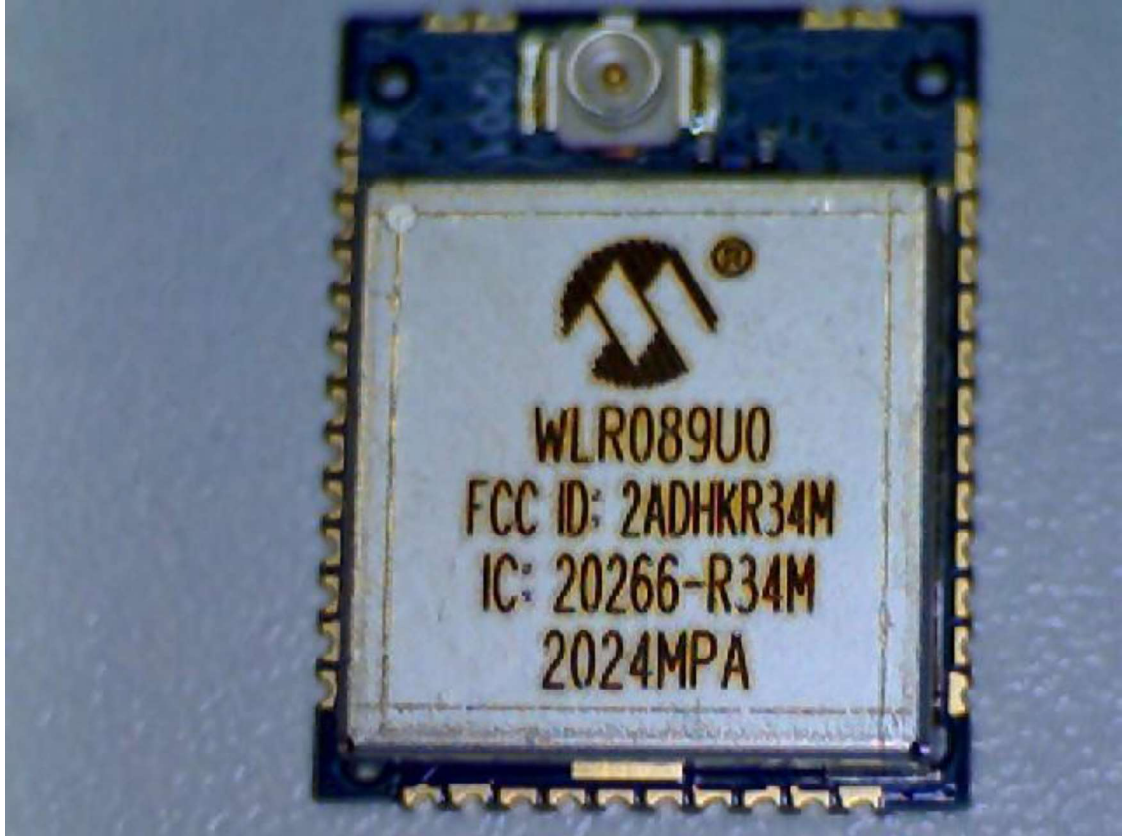


WLR089U0/WLR089UC : Conducted Sample

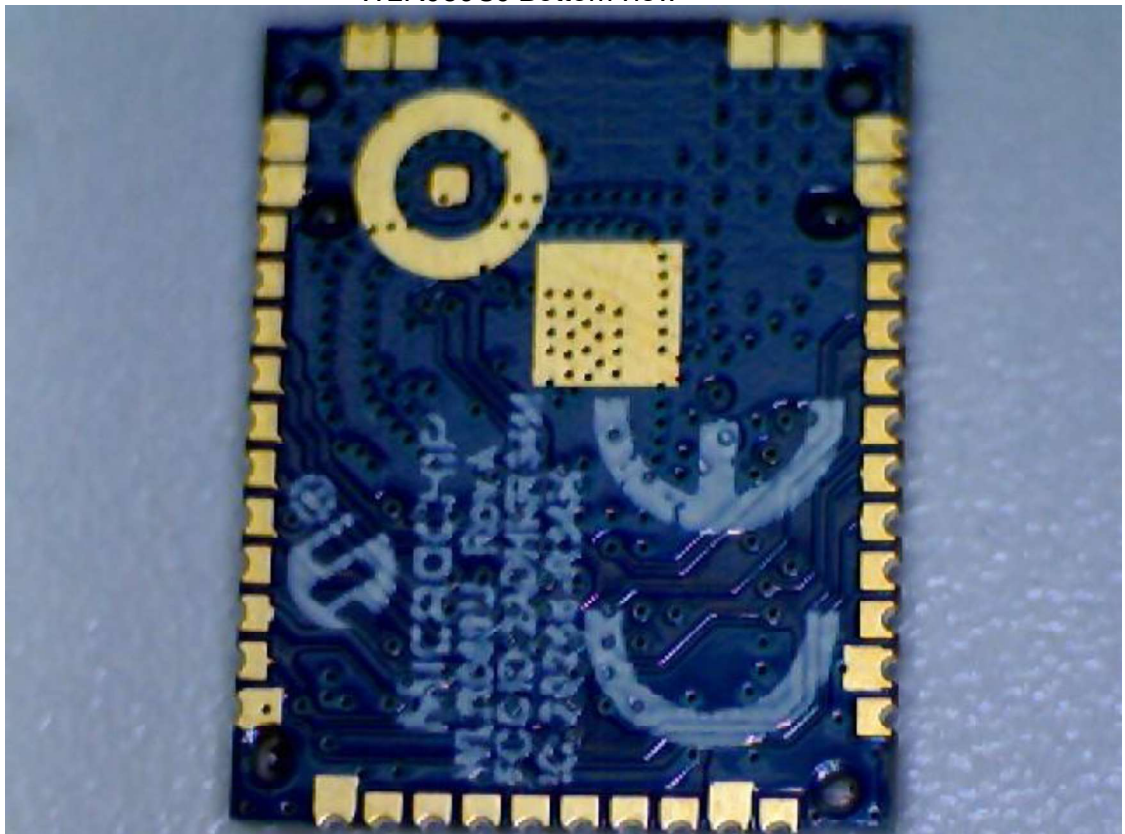


Product: Low Power LoRa® Sub-1GHz Module
Type Identification: WLR089U0, WLR089UC

WLR089U0 Top view



WLR089U0 Bottom view



Product: Low Power LoRa® Sub-1GHz Module

Type Identification: WLR089U0, WLR089UC

Slno.	Part Number	Manufacturer	Peak Antenna Gain	Antenna type
1	RFA-S1-C55H1-150D034	ALEAD technology	2.0dBi	half-wave dipole



Product: Low Power LoRa® Sub-1GHz Module

Type Identification: WLR089U0, WLR089UC

S/no.	Part Number	Manufacturer	Peak Antenna Gain	Antenna type
2	TH-89F-150mm-IPEX	BJTEK NAVIGATION, INC.	1.5dBi	half-wave dipole



Product: Low Power LoRa® Sub-1GHz Module

Type Identification: WLR089U0, WLR089UC

Slno.	Part Number	Manufacturer	Peak Antenna Gain	Antenna type
3	GWF-152XMPXX-H015	Joymax Electronics Co., Ltd	2dBi	1/2 Wavelength Dipole Antenna



Product: Low Power LoRa® Sub-1GHz Module

Type Identification: WLR089U0, WLR089UC

Sln.	Part Number	Manufacturer	Peak Antenna Gain	Antenna type
4	GWF-152XRSXX-H015	Joymax Electronics Co., Ltd	2dBi	1/2 Wavelength Dipole Antenna



Product: Low Power LoRa® Sub-1GHz Module

Type Identification: WLR089U0, WLR089UC

Slno.	Part Number	Manufacturer	Peak Antenna Gain	Antenna type
5	6610D13081-100	Kinsun	2dBi	1/2-λ , Dipole



Product: Low Power LoRa® Sub-1GHz Module

Type Identification: WLR089U0, WLR089UC

Sln.	Part Number	Manufacturer	Peak Antenna Gain	Antenna type
6	6610C03061	Kinsun	2dBi	1/2-λ , Dipole



Product: Low Power LoRa® Sub-1GHz Module
Type Identification: WLR089U0, WLR089UC

SIno.	Part Number	Manufacturer	Peak Antenna Gain	Antenna type
7	RFDPA131015IMBB301	PSA Walsin technology Corporation	0.90 dBi	Dipole Antenna



Product: Low Power LoRa® Sub-1GHz Module

Type Identification: WLR089U0, WLR089UC

Sino.	Part Number	Manufacturer	Peak Antenna Gain	Antenna type
8	RFA-ZW-C55-B-RP-D034	ALEAD technology	2.0dBi	half-wave dipole

