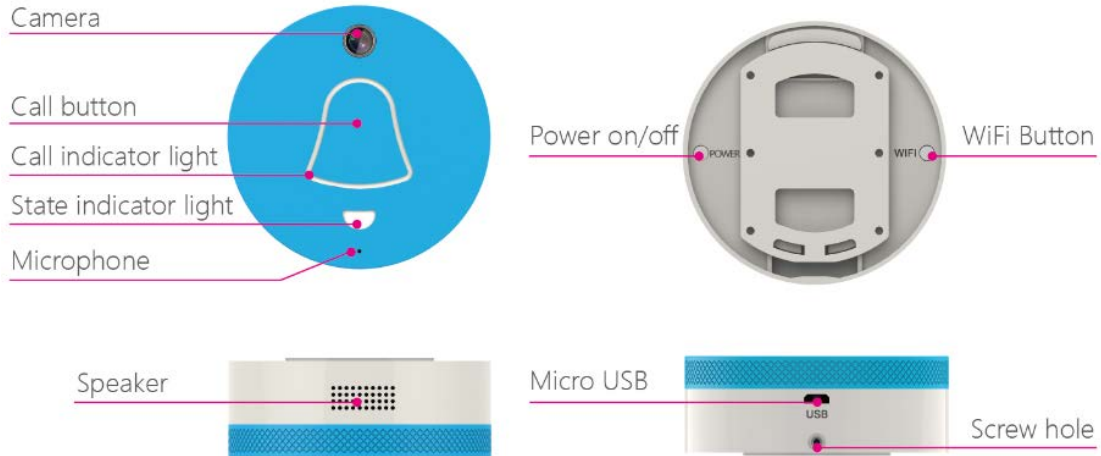




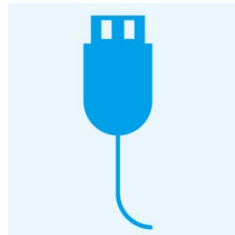
Before installation, please read the whole instructions below and operate as them.

一、Apperance



二、User Guide

1、Give power to the device



Please charge at least 15 hours before using it at the first time. It can standby more than half a year. If the battery lower than 10%,the APP will alarm you.

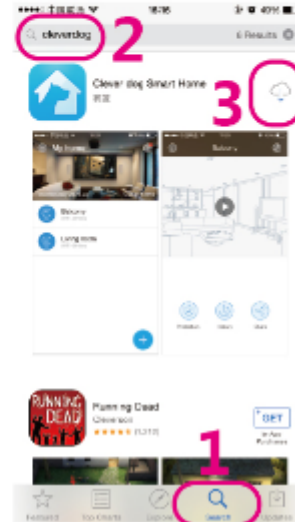
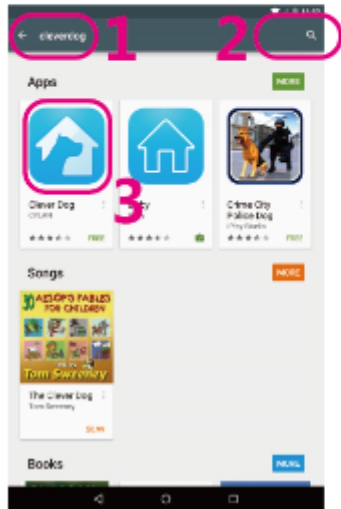
2、Install APP

Scan the QR code to download the app. Otherwise, you can search "cleverdog" in google play for android phone, and search "cleverdog" in App Store for iphone.





Homesick ? Use Clever Dog!



3. Sign up and sign in

Open the APP, click sign up to register, or sign in if you already have an account.



4. Add device

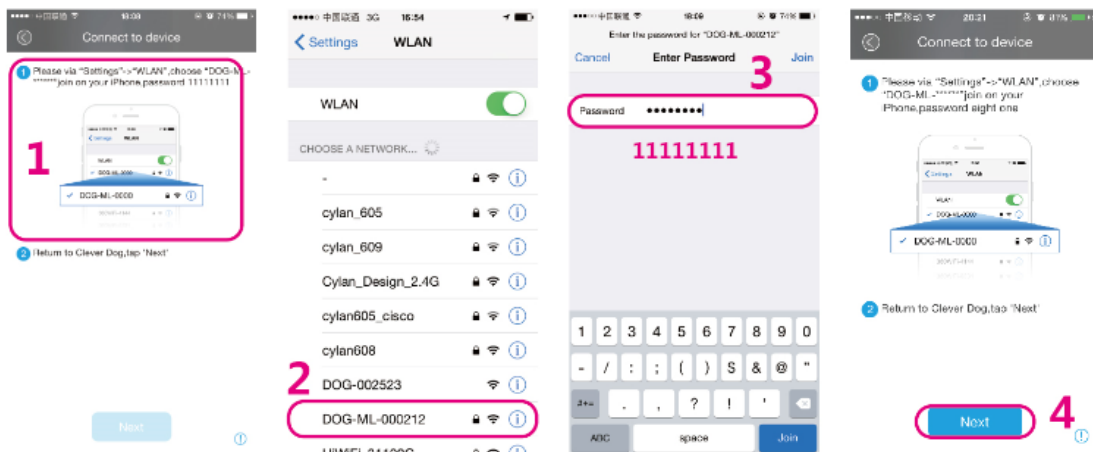
- a) After sign up and sign in successfully, you will see the homepage, click the sign "+" ,and choose "DoorBell"



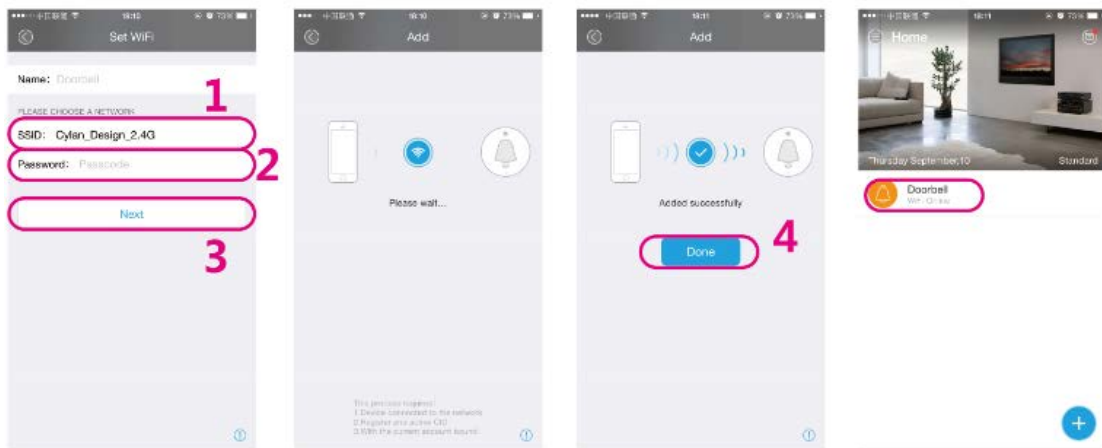
Click on the "+" to add your device



- a) When you have given the power to the device , please make sure the state of indicator light in front of the device is red and normally operation. Click "i" too look up the status statements of the LED indicator light.
- b) Add device
- Android phone: Choose the corresponding CID of the new device you wanted to add at the page of 【the device nearby】 .
 - iPhone : iPhone: Open 【Settings】 > 【WLAN】 , select "DOG-ML*****" , and input the password 111111. Then go back the cleverdog app, and click "next" .



- c) On the page of "WiFi Setting" , select the network you want to connect, and input your password, then click "next" .



Notes: It is normal that the network of phone will auto-switch in the progress of configuration.

d) Added successfully, let's enjoy it.

5. Look up and use

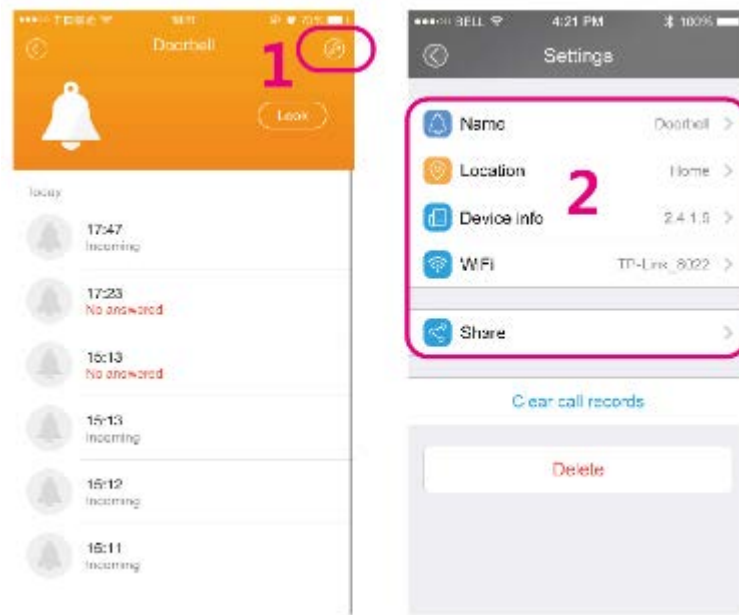
Click the lists at the [homepage] and go into interface of the corresponding doorbell.



You can view the call history of visitors via the call log history, and click "look up" to view the real-time video of DoorBell.

- Voice: Open/close the sound of DoorBell
 - Speaker: Open/close the duplex-speech function of DoorBell
 - Picture: Take a picture and save it in photos of your phone.
- Click icon "settings" , and go to the page of [function settings]**

- Device Name : Rename the name of device
- WiFi Config: Reconfig the WiFi of the device , please operate according to the instructions
- Device Info: The information about battery percentage, WiFi connection status, software version, model, and etc.



四、 State of indicator light

Indicator light	State	Description
Call indicator light	Blue flashing	Pressed "call" button , and calling now. Notes: It is effective at the time of WiFi online and device has been binded.
State indicator light	Red and normally operation.	Configurable state
	Red flashing slowly	WiFi Connecting...
	Red flashing quickly	Server Connecting...
	Blue and normally operation	Charging... Notes: The state indicator light will go out when the battery percentage is full

Notes : If the call indicator light and state indicator light flash at the same time, the software of device is upgrading.

五、 Product Parameters

Items	Specifications
Product Model	DOG-DoorBell
Camera lens	High-definition color camera, big wide Angle
Color	Blue, Orange, Pink, Gray

六、 Technology Parameters

Video	H.264 CODEC , Resolution 720x576 @15fps
Audio	Built-in microphone and speaker



Network and security	
WiFi	support
Wireless protocol	802.11b,802.11g,802.11b
Wireless standard	Station , Access Point , and Wi-Fi—Direct mode
Security	WPA&WPS 2.0 encryption mode
Parameters and size	
Power	Micro USB interface , 5V—1A
Battery	Battery powered , capacity: 2500mAH
Power consumption	Less than 0.5W
Work environment	Temperature: -10~60°C , humidity<90%
Size	Diameter : 80mm,thickness:28mm

Support and service

Support and service

- 1, before you send the device to us, please contact our after-sale service engineers to confirm product failures;
- 2、 You can also visit www.cleverdog.com.cn, and contact our after-sale service engineers to seek for technical support.
- 3、 please fill in the product after-sales service card before mailing the user stub.

After-sale service contact:

Manufacture: Shenzhen Cylan Technology Co.Ltd

After-sale service engineers: +86+755-83185921

Web site: <http://www.cleverdog.com.cn>

QQ: 800057321

Address:607B,Minning business building, Caitian North road, Futian district , Shenzhen

Dangdang DoorBell is a product belongs to brand of the clever dog. Relying on the smart home cloud service platform, it can connect to the smart phones via WiFi, and brings users a more smart and convenient life experience.



The statements should be displayed in the user manual:

changes or modifications not expressly approved by the party responsible for compliance could void the user's authority to operate the equipment.

This equipment has been tested and found to comply with the limits for a Class B digital device, pursuant to Part 15 of the FCC Rules. These limits are designed to provide reasonable protection against harmful interference in a residential installation. This equipment generates, uses and can radiate radio frequency energy and, if not installed and used in accordance with the instructions, may cause harmful interference to radio communications. However, there is no guarantee that interference will not occur in a particular installation.

If this equipment does cause harmful interference to radio or television reception, which can be determined by turning the equipment off and on, the user is encouraged to try to correct the interference by one or more of the following measures:

- Reorient or relocate the receiving antenna.
- Increase the separation between the equipment and receiver.
- Connect the equipment into an outlet on a circuit different from that to which the receiver is connected.
- Consult the dealer or an experienced radio/TV technician for help.

This equipment must be installed and operated in accordance with provided instructions and the antenna(s) used for this transmitter must be installed to provide a separation distance of at least 20 cm from all persons and must not be co-located or operating in conjunction with any other antenna or transmitter. End-users and installers must be provided with antenna installation instructions and transmitter operating conditions for satisfying RF exposure compliance.

This device complies with Part 15 of the FCC Rules. Operation is subject to the following two conditions: (1) this device may not cause harmful interference, and (2) this device must accept any interference received, including interference that may cause undesired operation.