



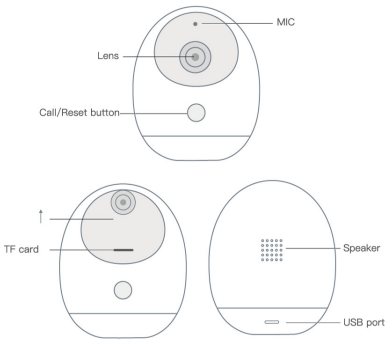
# Clever Dog PTZ Camera

User Manual

FCCID : 2ADHE-DOG-2W-V29

## Appearance

Please read the instructions before installation.



## User Manual

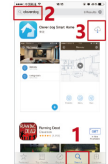
1. Power on
2. App installation
3. Download and install by scanning the QR code at the bottom of package or on the camera.
4. To download the APP, Please search 'cleverdog' in APP store or google play.



Download the "Clever Dog"



Setup video



3. Registration and login  
Open the App and click "Sign up" to register; if you already have a login ID, please click "Sign in"



## Special Statement

The following situations need to be compensated maintenance during warranty period, please be attention:

- Malfunctions or injuries caused by abnormal installment, operation and maintenance.
- Without authorization, tear up the barcode.
- The product model and system in the warranty service card are different from the information the product itself.
- Beyond the period of replacement and warranty.
- Malfunctions or injuries caused by teardown and repair without company's authorization.
- Malfunctions or injuries which are not caused by the technology, design, manufacturing and quality.
- Malfunctions or injuries caused by force majeure, such as earthquake, fire, flood and thunderstrike.
- Malfunctions or injuries caused by accidents or man-made.

## Product Repair Way

Please contact the original seller for after-sales service. After purchasing the product, in case the product has problems confirmed by the after-sales service engineer, you can select free services and repairs, goods return and exchange. Relevant warranty period and back freight attribution are as follows: (since the equipment activation date)

| Time                 | within 7 days | 7 days-1 month | within 3 months | 1 year under warranty | After warranty   |
|----------------------|---------------|----------------|-----------------|-----------------------|------------------|
| Return guarantee     | Exchange      | Warranty       | Warranty        | Warranty              | Paid maintenance |
| Back freight paid by | Seller        | Seller         | AA              | Buyer                 | Buyer            |

Commitment deadline: The Company will repair or replace the corresponding products or accessories within 5 days from the receipt day. (not including posting time).

## After-sales Service Contact

Manufacturer: Shenzhen Cylan Technology Co.Ltd  
After-sales service engineers: +86-0755-83185921  
Official site: www.fgou.com

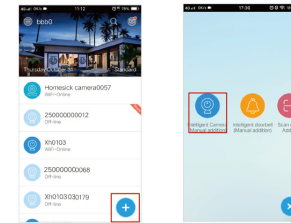
Note: Before the return, Please contact customer service to communicate.

## User Stub

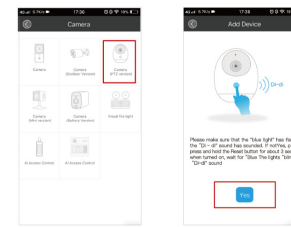
To guarantee your interests, please fill in the stub carefully!

|                     |               |  |
|---------------------|---------------|--|
| Product Information | Product Name  |  |
|                     | CID           |  |
| User Information    | Purchase Date |  |
|                     | Name          |  |
|                     | Phone Number  |  |
|                     | Email         |  |
|                     | Address       |  |

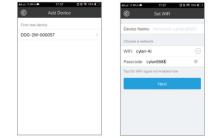
4. Add device  
a) Enter into Homepage, click "+" and choose "Intelligent Camera"



- b) After the device is powered on, check whether the indicator light is blue and flashing or the sound "Di-di" is ringing . If not, press the RESET button for a long time.Wait until the RESET indicator is blue flashing or the sound "Di-di" is ringing, then click "Yes".

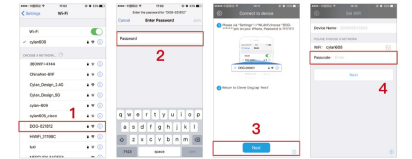


- c) configure network  
● On the "add device" page, select the device CID network first(show as picture 1), then configure it with home/office network(show as picture 2).



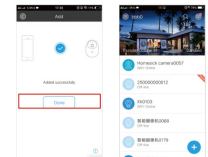
Note: If there is no device CID network when configuring, please refer to below IOS settings route to find it.

- iPhone: System settings --> click "WLAN" and choose "DOG-\*\*\*\*\*" to connect, enter the code 11111111; then back to the Client and App "Next"



Note: It's normal that Wi-Fi may auto switch between dog wifi and home/office wifi while configuring.

- d) Add successfully, please enjoy.



## Technical parameters

| Items               | Parameters  |
|---------------------|---|
| Lens                | 3.6mm   |
| Resolution          | 1920*1080@15fps   |
| Codec               | H.264 CODEC   |
| Audio               | Built-in microphone and speaker                               |
| Wireless Protocol   | IEEE802.11b/g/n,2.4G~2.485G,WPA2/WPA/WEP/OPEN, Frequency 2.4G |
| Storage mode        | Support Micro SD card up to128GB&Cloud storage                |
| Power               | Micro USB Interface,5V=1A                                     |
| Working environment | Temperature: -20°C-60°C, humidity: <95%                       |

## FAQ

1. How to fix it on the wall?  
a) Drill holes and fix the base on the wall with screws , buckle the camera to the base.  
b) Stick the base to glass, tiles or other smooth things with double-side tap or 3M glue.
2. What is the lowest bandwidth when viewing the real-time video?  
a) To ensure the uency of video, it is advised that the bandwidth isn't lower than 512kpbs.  
b) The flow consumption of video is 2M/s, and will increase to 2.4M/s.
3. Install Micro TF card  
a) Make sure the camera is powered off and insert the micro TF card with the contact side up into the Micro TF card.  
b) When installing or removing the Micro TF card, you need to turn off the power of the camera before operating.
4. Why can't I store videos and read videos properly when I insert the MicroSD(TF) card?  
To ensure normal operation of the camera, please insert the following recommended Micro SD(TF) card:  
Kingston 8G/16G/32G  
SanDisk 16G/32G/64G/128G  
PNY 16G/32G/64G/128G

## After-sales Services

To guarantee your interests, please read the content as follows carefully!

### Warranty Service

1. Return Service  
Within 7 days since the receipt of goods, we provide a service of refunding or replacement for the quality problem tested and confirmed by sale service engineer.

2. Replacement Service  
Within 30 days since the receipt of goods, we provide a service of replacement and maintenance for the quality problem tested and confirmed by sale service engineer.

3. Maintenance Service  
Within 1 year since the receipt of goods, our company will provide free maintenance for the stoppage according to the warranty clauses.After the warranty period, our company continues to offer the technical service, but replacing the spare parts, our company only charge for material and service fee.

4. Timed commitment  
Since the day our company received the product, we will repair or replace in 5 days (the shipping time will be not included)

### Support and Service

1. Before you send the device to us, please contact our after-sale service engineers to confirm product failures.
2. You can contact our after-sale service engineers to seek for technical support.
3. Please fill in the product after-sales service card before mailing the user stub.

### Warranty Scope

- Warranty service only apply to the product itself, but the packages and accessories are not included.
- Within 30 days, the performance issue of device should be tested by our company, once confirmed , our company will send you another same model product or repaired good ones. And the defective parts will belong to our company.
- Please take your invoice and after sale card if you need after sale service, and if you can not provide above certification, the warranty time will be calculate from the date of manufacture.
- The repaired products will add another 30 days warranty time. If you pay for the technical support, to the same performance issue, we will provide you three months warranty service for free since the day it has been repaired, please ask for maintenance certification and keep it.
- The delivery cost of the repaired products should be paid by the sender.
- The promises beyond the after-sale service which made by the dealers, our company take no responsibility.



Correct Disposal of this product: This marking indicates that this product should not be disposed with other household wastes throughout the EU. To prevent possible harm to the environment or human health from uncontrolled waste disposal, recycle it responsibly to promote the sustainable reuse of material resources. To return your used device, please use the return and collection systems or contact the retailer where the product was purchased. They can take this product for environmental safe recycling.



FCC caution  
Federal Communication Commission (FCC) Radiation Exposure Statement  
When using the product, maintain a distance of 20cm from the body to ensure compliance with RF exposure requirements.

FCC statements:  
This device complies with part 15 of the FCC rules. Operation is subject to the following two conditions: (1) this device may not cause harmful interference, and (2) this device must accept any interference received, including interference that may cause undesired operation.

NOTE: The manufacturer is not responsible for any radio or TV interference caused by unauthorized modifications or changes to this equipment. Such modifications or changes could void the user's authority to operate the equipment.

NOTE: This equipment has been tested and found to comply with the limits for a Class B digital device, pursuant to part 15 of the FCC Rules. These limits are designed to provide reasonable protection against harmful interference in a residential installation. This equipment generates uses and can radiate radio frequency energy and, if not installed and used in accordance with the instructions, may cause harmful interference to radio communications. However, there is no guarantee that interference will not occur in a particular installation. If this equipment does cause harmful interference to radio or television reception, which can be determined by turning the equipment off and on, the user is encouraged to try to correct the interference by one or more of the following measures:  
- Reorient or relocate the receiving antenna.  
- Increase the separation between the equipment and receiver.  
- Connect the equipment into an outlet on a circuit different from that to which the receiver is connected.

- Consult the dealer or an experienced radio/TV technician for help.  
To maintain compliance with FCC's RF Exposure guidelines, This equipment should be installed and operated with minimum distance between 20cm the radiator or your body. Use only the supplied antenna.