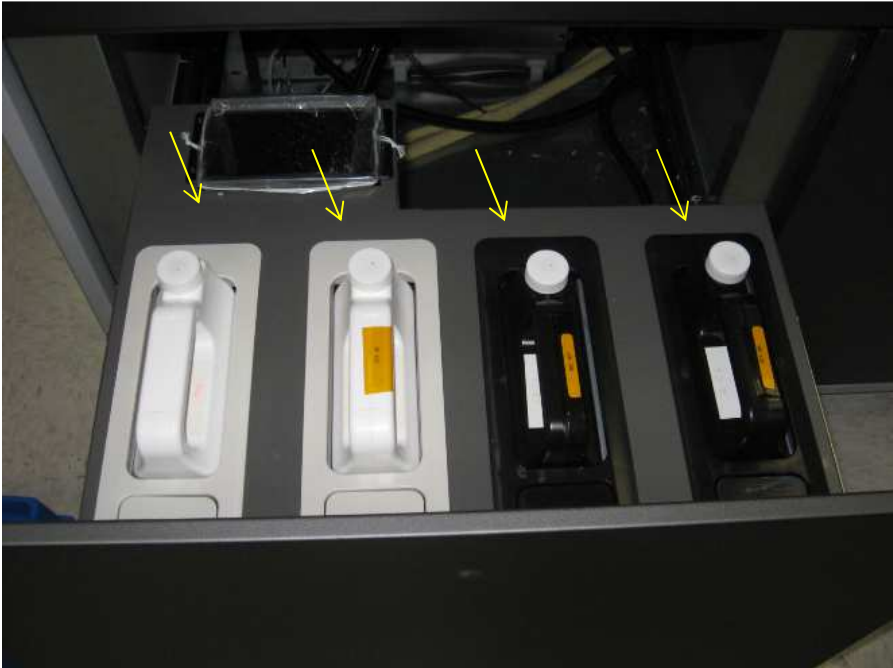


## Internal Photographs of ProJet® MJP 2500 RFID Antennas and Controller

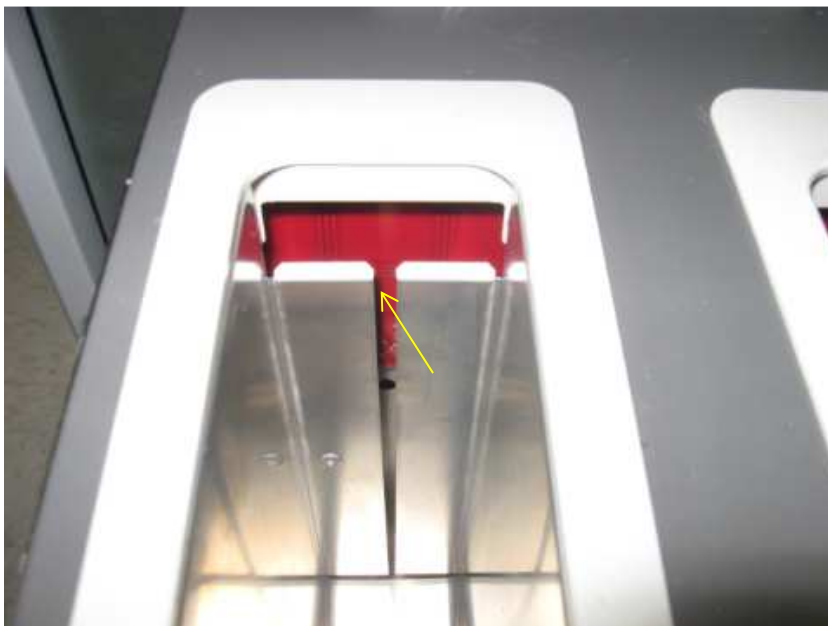
Antennas: The four antenna boards are mounted on a grounded sheet metal plate with metal removed beneath the antenna as to not interfere with the RF operation. This sheet metal plate is then enclosed within a grounded sheet metal material drawer assembly. The antennas are exposed to the tag locations on the consumable material bottles as the material bottle lowers with bottle insertion.



**Material Distribution Module (MDM) with material bottles installed:** Antenna locations are shown using arrows

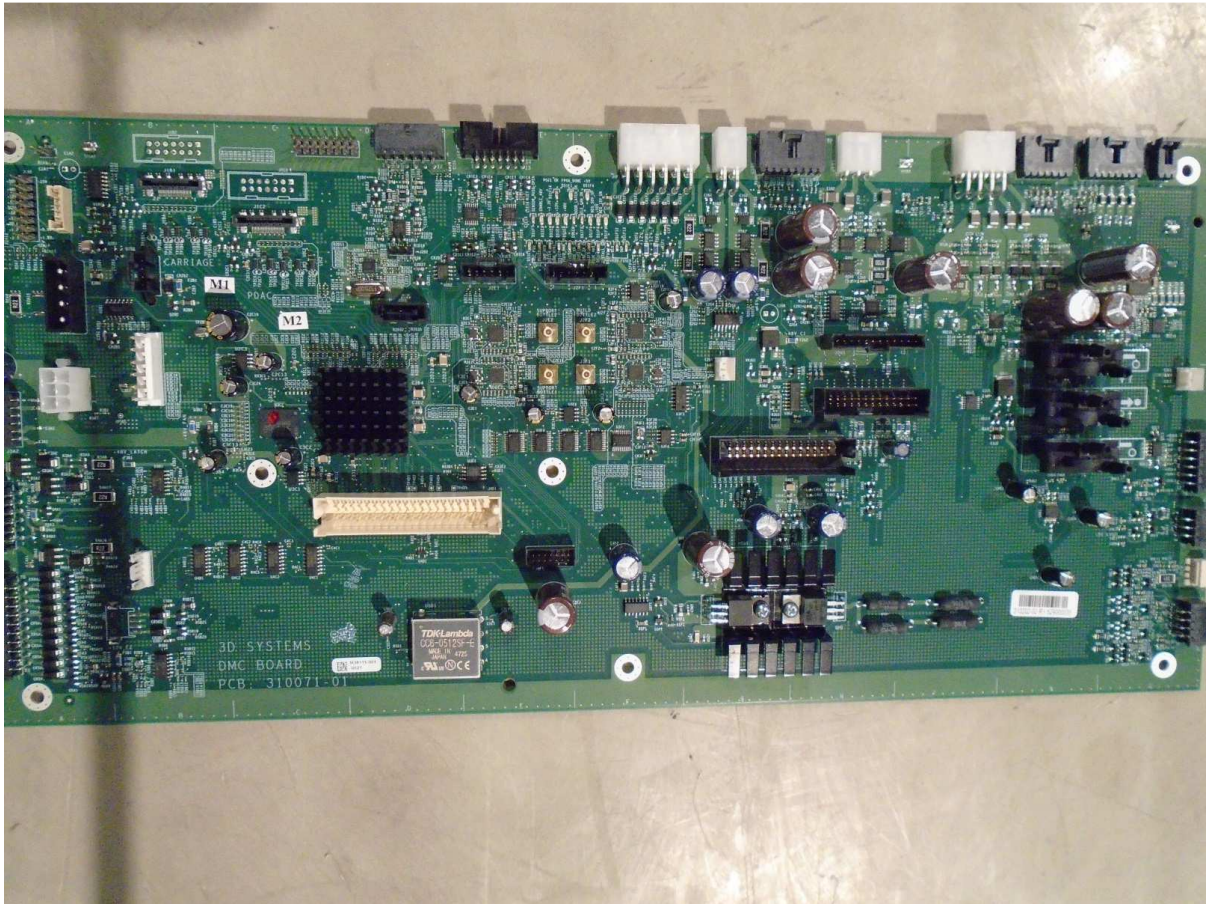


**Material Distribution Module (MDM) with material bottles removed:** Antenna locations are shown using arrows



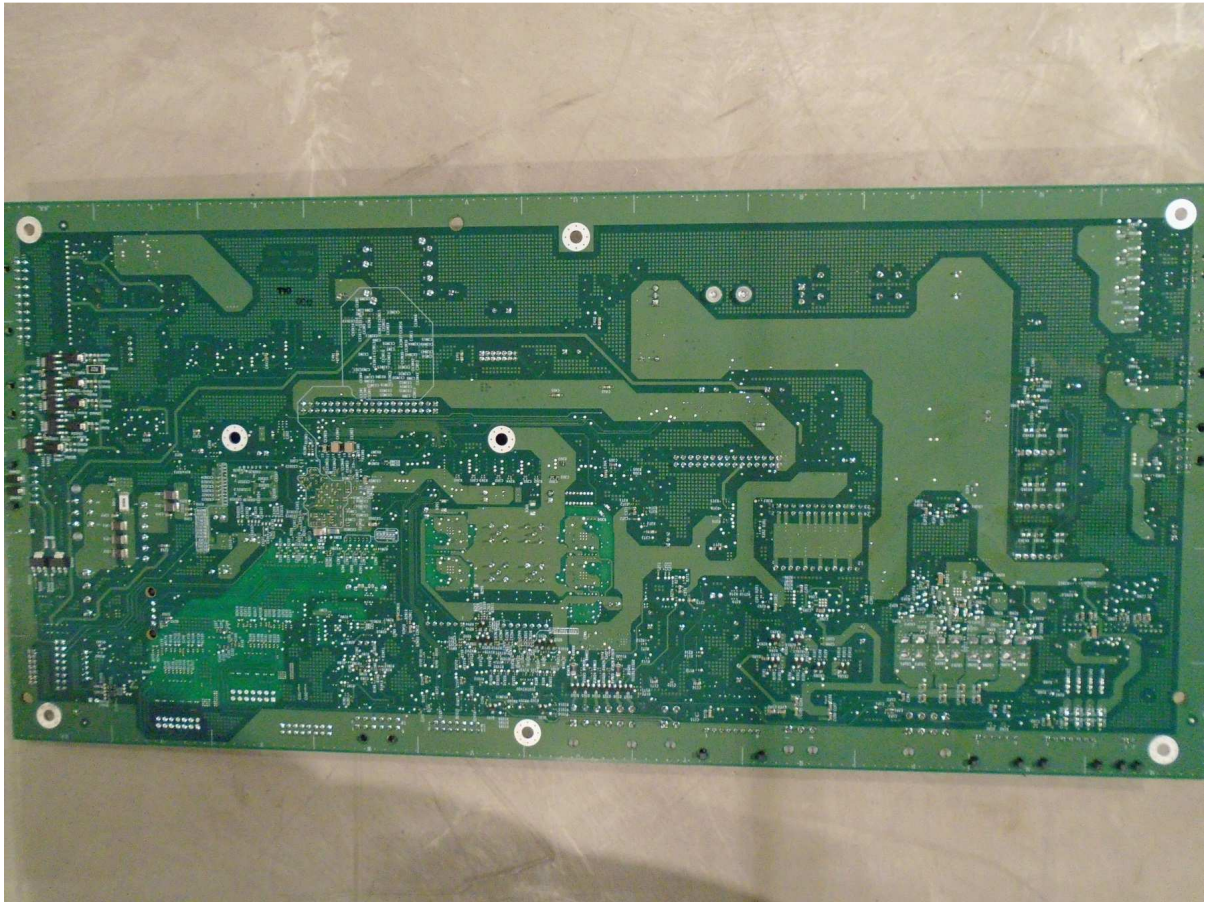
**Material Distribution Module (MDM) with material bottles removed:** Close-up view of antenna locations

**RFID Controller:** The RFID controller circuitry is located on the DMC circuit board. It is permanently mounted inside a metal electronics enclosure that is screwed shut. The metal electronics enclosure is accessible by removing the rear door.



**Top view of RFID circuitry and antenna ports on the DMC board**





**Bottom view of RFID circuitry and antenna ports on the DMC board**



**Front view of ProJet® MJP 2500 with doors open**

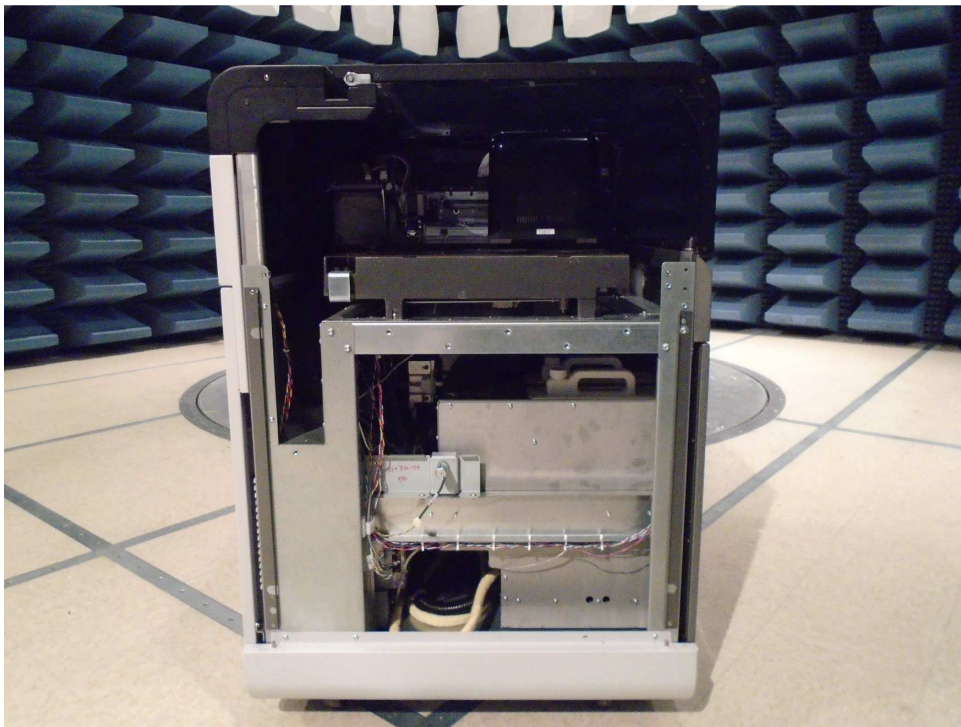


**Rear view of ProJet® MJP 2500 with rear access door removed**





Cover removed from electronics enclosure; DMC board mounted vertically inside of ProJet® MJP 2500



Left side view of ProJet® MJP 2500 with cover removed