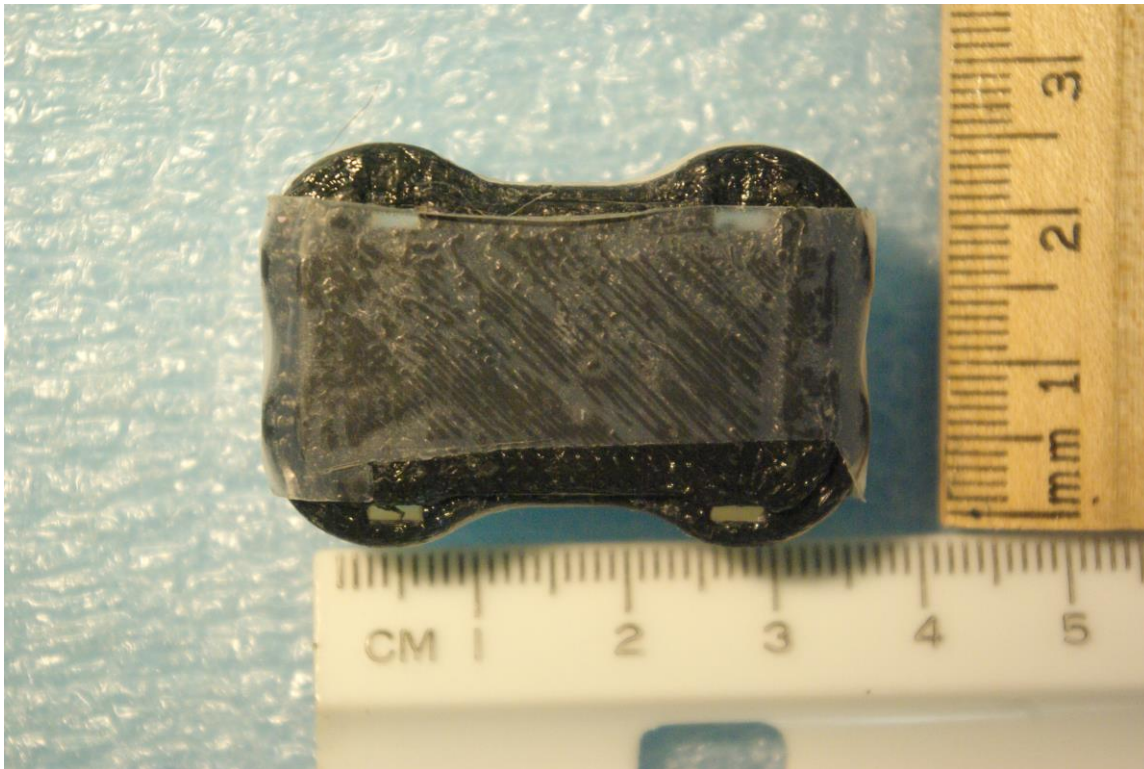
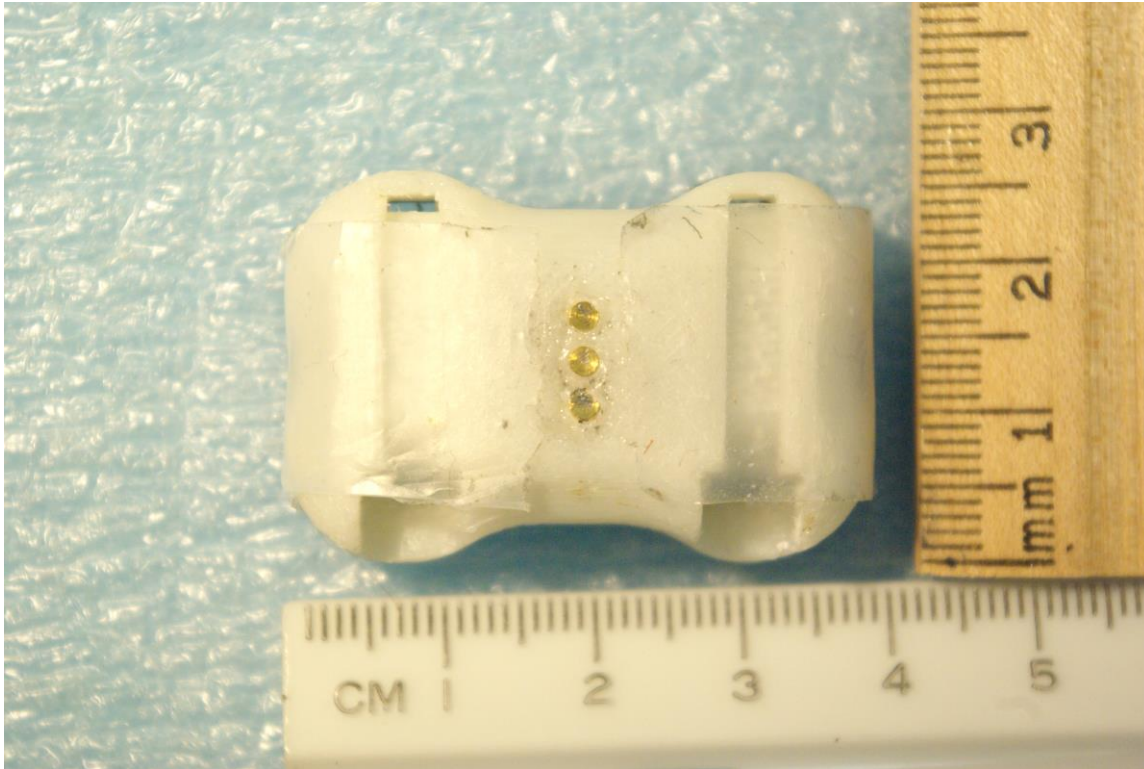


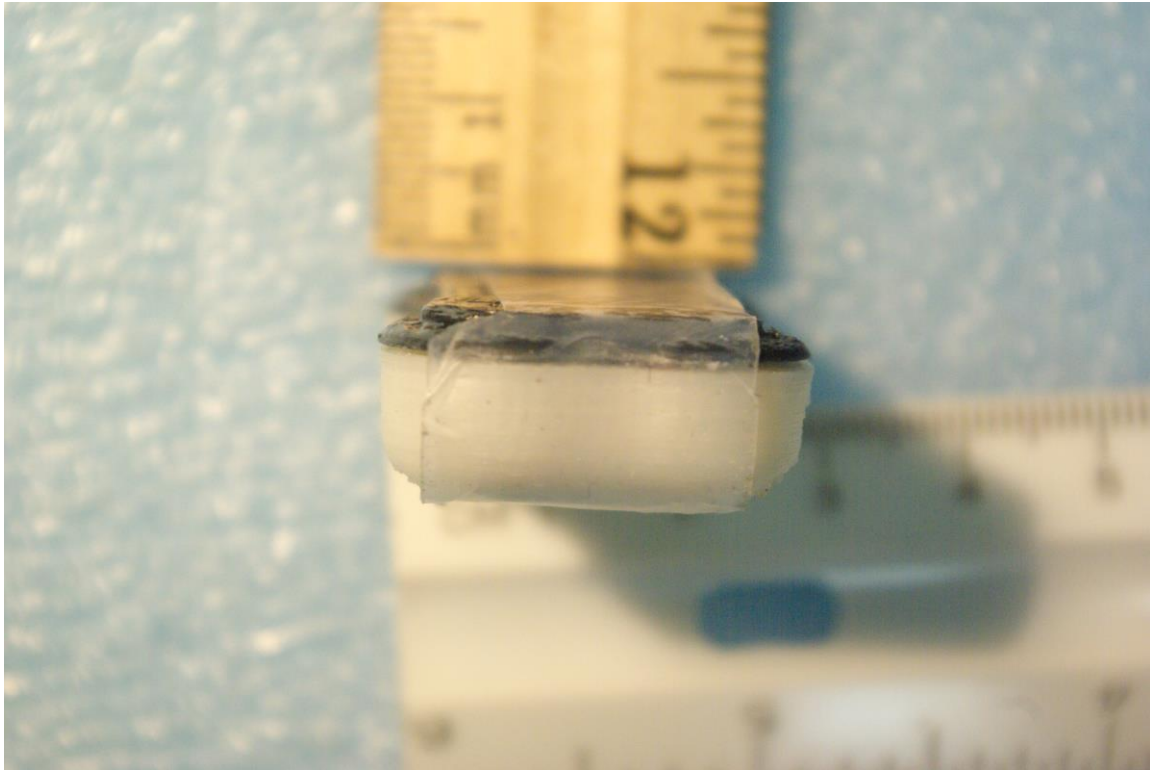
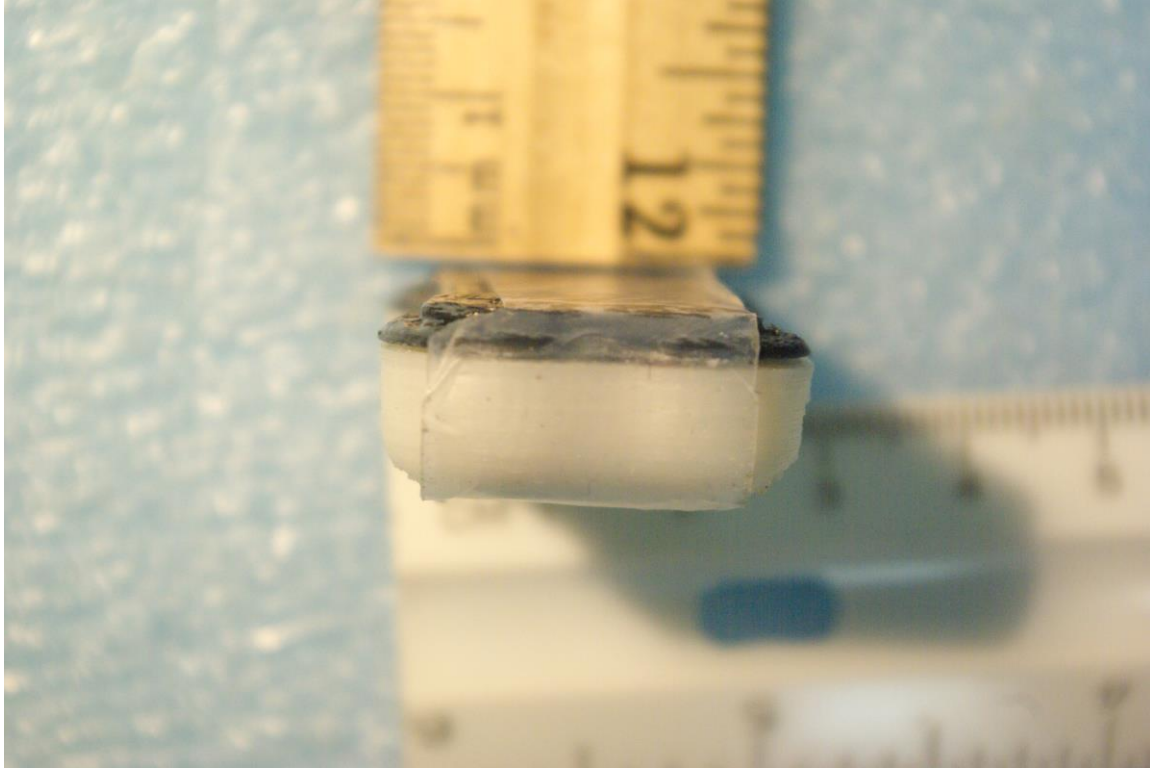
External photographs of equipment under test



Rogers Labs, Inc.  
4405 West 259<sup>th</sup> Terrace  
Louisburg, KS 66053  
Phone/Fax: (913) 837-3214  
Revision 1

FitBark Inc.  
Model: 7003  
Test #: 170518  
Test to: CFR47 15C, RSS-Gen RSS-210  
File: 7003 Short Term Conf ExtPho

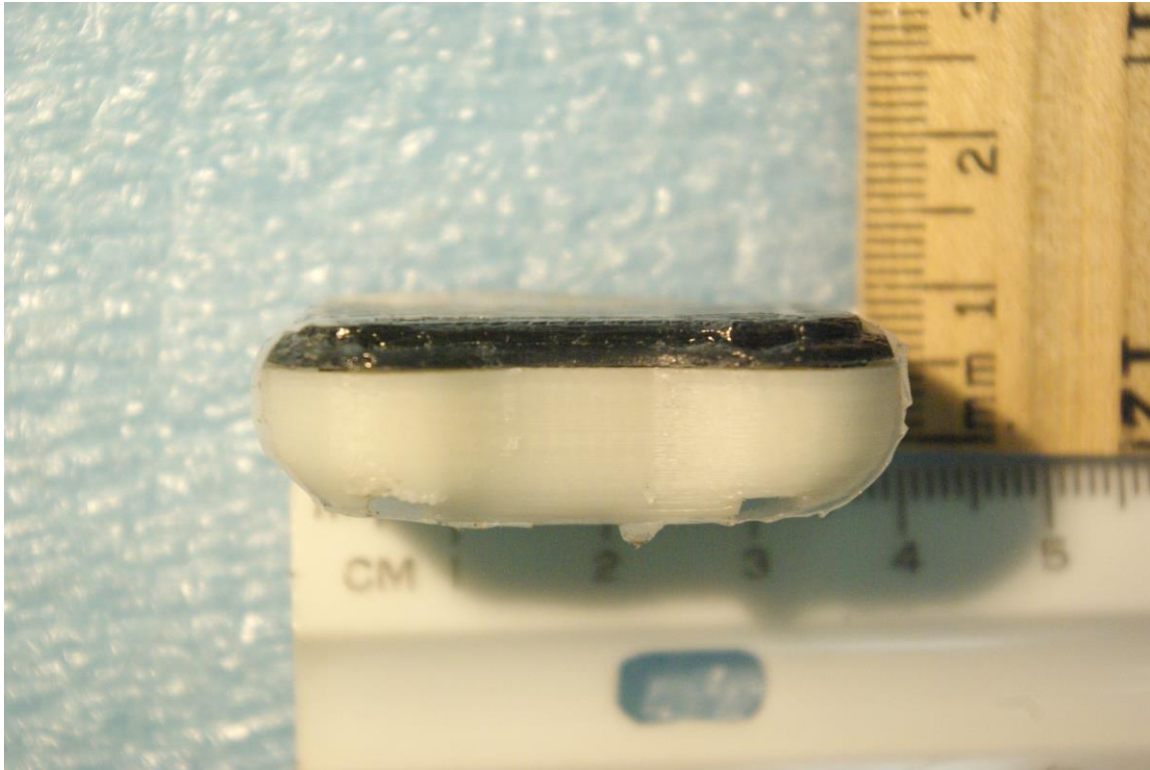
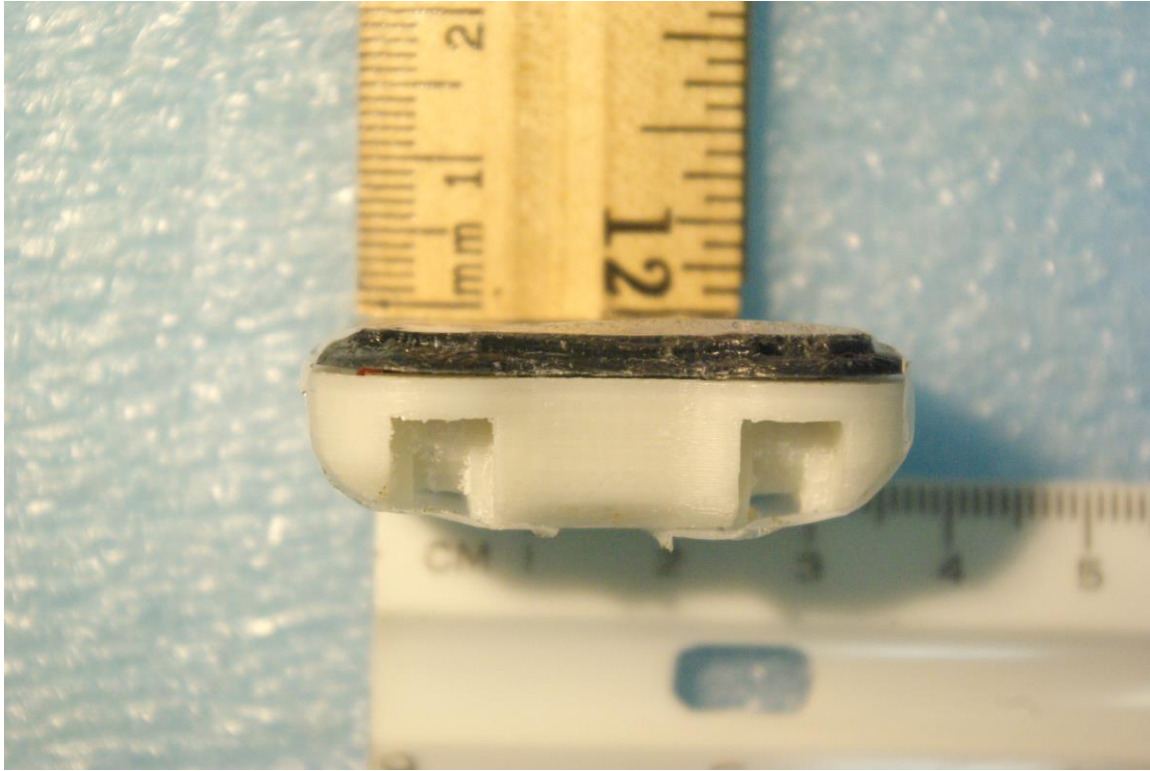
SN: ENG1  
FCC ID: 2ADEQ7003  
IC: 12329A-7003  
Date: October 4, 2017  
Page 1 of 4



Rogers Labs, Inc.  
4405 West 259<sup>th</sup> Terrace  
Louisburg, KS 66053  
Phone/Fax: (913) 837-3214  
Revision 1

FitBark Inc.  
Model: 7003  
Test #: 170518  
Test to: CFR47 15C, RSS-Gen RSS-210  
File: 7003 Short Term Conf ExtPho

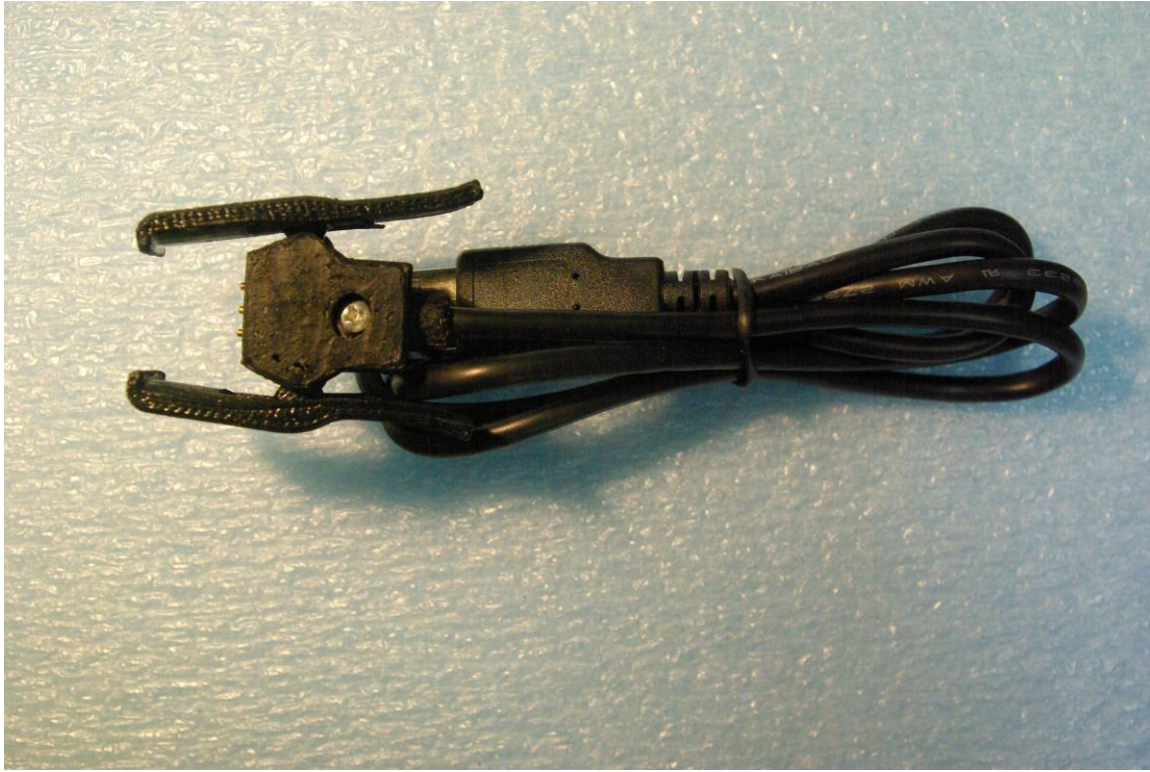
SN: ENG1  
FCC ID: 2ADEQ7003  
IC: 12329A-7003  
Date: October 4, 2017  
Page 2 of 4



Rogers Labs, Inc.  
4405 West 259<sup>th</sup> Terrace  
Louisburg, KS 66053  
Phone/Fax: (913) 837-3214  
Revision 1

FitBark Inc.  
Model: 7003  
Test #: 170518  
Test to: CFR47 15C, RSS-Gen RSS-210  
File: 7003 Short Term Conf ExtPho

SN: ENG1  
FCC ID: 2ADEQ7003  
IC: 12329A-7003  
Date: October 4, 2017  
Page 3 of 4



Rogers Labs, Inc.  
4405 West 259<sup>th</sup> Terrace  
Louisburg, KS 66053  
Phone/Fax: (913) 837-3214  
Revision 1

FitBark Inc.  
Model: 7003  
Test #: 170518  
Test to: CFR47 15C, RSS-Gen RSS-210  
File: 7003 Short Term Conf ExtPho

SN: ENG1  
FCC ID: 2ADEQ7003  
IC: 12329A-7003  
Date: October 4, 2017  
Page 4 of 4