

16 15 14 13 12 11 10 9 8 7 6 5 4 3 2 1

H

G

F

E

D

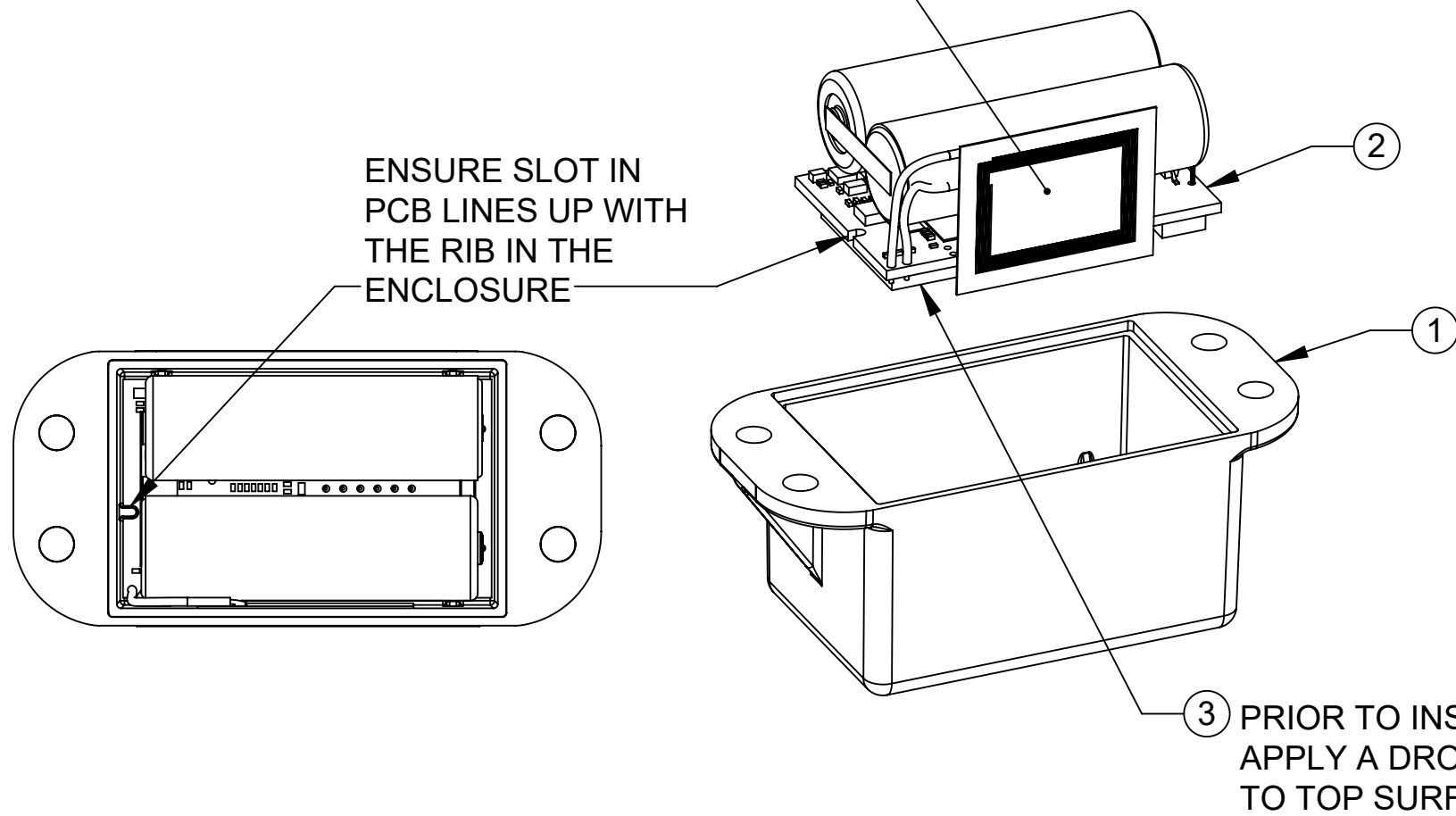
C

B

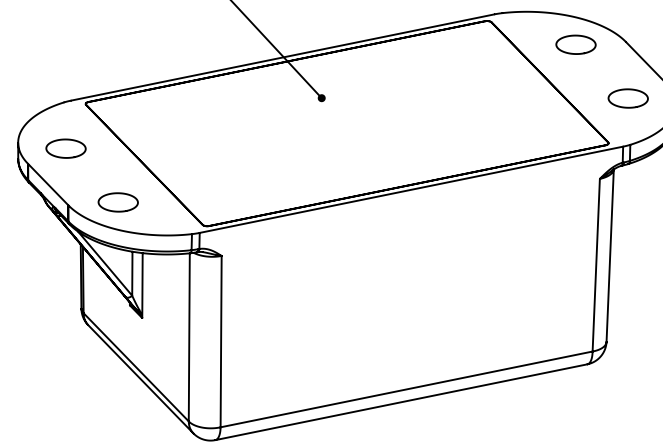
A

PRIOR TO INSERTING THE PCB  
APPLY A DROP OF ADHESIVE,  
ITEM NO. 3 TO TOP SURFACE  
OF THE ANTENNA

ENSURE SLOT IN  
PCB LINES UP WITH  
THE RIB IN THE  
ENCLOSURE



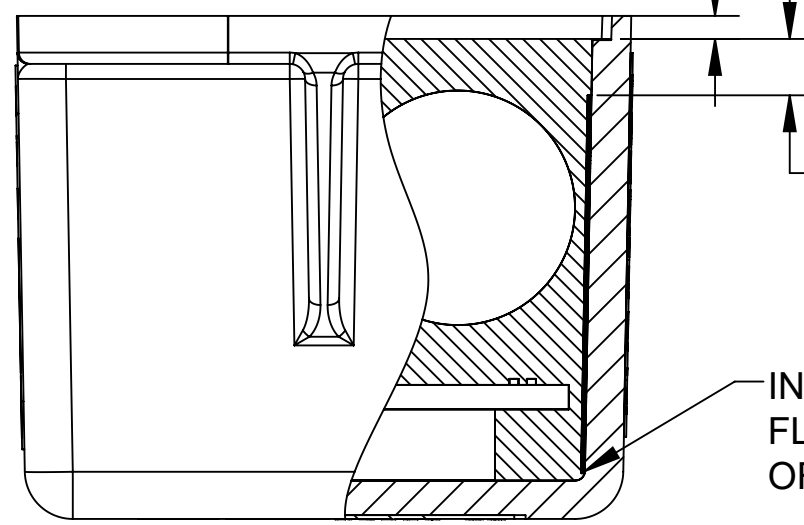
SEE NOTE 4 (8)



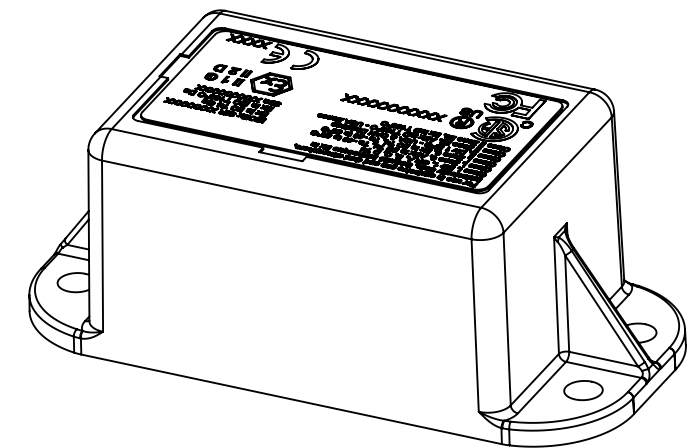
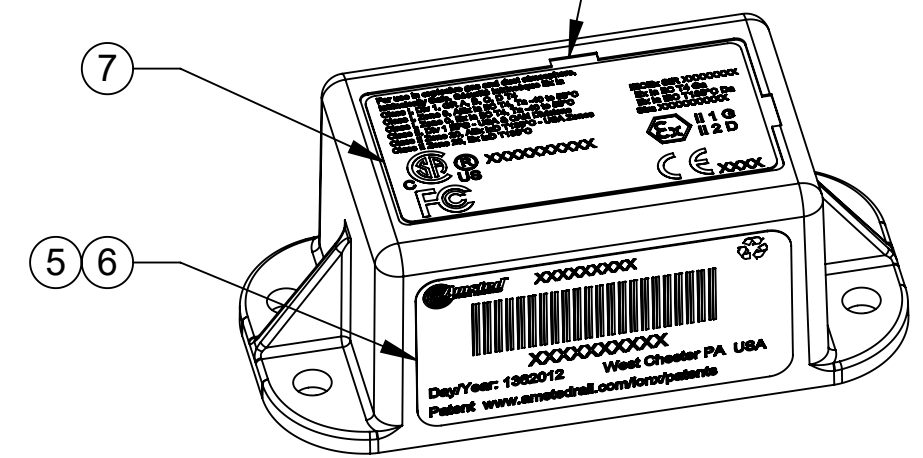
1.5mm MAX. FROM BOTTOM OF  
[.06in]  
ENCLOSURE TO POTTING

ENSURE 1.5mm [.06in] MINIMUM  
POTTING ABOVE ALL COMPONENTS

INSTALL NFC ANTENNA  
FLUSH WITH BOTTOM  
OF THE ENCLOSURE WALL



NOTE ORIENTATION OF  
LABEL TO NOTCH



#### NOTES:

1. ALL METALLIC MATERIALS USED DO NOT CONTAIN, BY MASS, MORE THAN 10% IN TOTAL OF ALUMINUM, MAGNESIUM, TITANIUM AND ZIRCONIUM, AND 7.5% IN TOTAL OF MAGNESIUM, TITANIUM AND ZIRCONIUM.
2. NO SUBSTITUTION OF MATERIALS IS PERMISSIBLE WITHOUT PRIOR APPROVAL FROM THE INTRINSIC SAFETY CERTIFICATION BODY.
3. LABELS, ITEM NO'S 4, 11 & 12 ARE NOT APPLIED TO THE WSN, THEY ARE TO BE PLACED WITH THE WSN INSIDE THE SHIPPING CONTAINER ALONG WITH THE MOUNTING KIT, ITEM NO. 10
4. FILL WITH POTTING MATERIAL TO WITHIN 1.5MM [.060"] OF THE BOTTOM SURFACE OF THE ENCLOSURE. NO POTTING MATERIAL IS PERMISSIBLE ON THE BOTTOM SURFACE OF THE ENCLOSURE
5. SUPPLIER TO SUBMIT DECLARATION OF CONFORMITY PER ISO/IEC 17050 AND IONX 740-00014 WITH EACH SHIPMENT OF PARTS.

#### MATERIAL / FINISH

MATERIAL: -  
-  
-  
COLOR: -  
FINISH: -

UNLESS OTHERWISE SPECIFIED :  
DIMENSIONS ARE IN METRIC (INCHES) OR DEGREES  
THIRD ANGLE PROJECTION  
LINEAR & ANGULAR TOLERANCES  
METRIC [INCHES]  
XX ± 0.50 [X.X] ± .020  
XX.X ± 0.20 [X.XX] ± .010  
XX.XX ± 0.10 [X.XXX] ± .005  
X.XXX ± 0.05 [X.XXXX] ± .002  
GEOMETRIC DIMENSIONS AND  
TOLERANCES PER ANSI Y14.5M-1994  
DO NOT MEASURE OFF THIS PRINT

THIS DRAWING REPLACES:

REFERENCE PART NO.:

DRAWN: JEFF THAWLEY 1/22/18

CHECKED: DAVE HEAGERTY 1/22/18

PROJECT ENGINEER: JEFF THAWLEY 1/22/18

NOTICE OF CONFIDENTIALITY:  
THIS DOCUMENT AND THE INFORMATION CONTAINED IN IT ARE CONFIDENTIAL AND ARE THE PROPERTY OF IONX. THEY MAY NOT BE IN ANY WAY DISCLOSED, COPIED OR USED BY ANYONE EXCEPT AS EXPRESSLY AUTHORIZED BY IONX. THE DOCUMENT SHOULD ALWAYS BE KEPT IN A SECURE PLACE, AND SHOULD BE DESTROYED OR RETURNED TO IONX WHEN IT IS NO LONGER NEEDED.



300 WILLOWBROOK LANE, SUITE 320  
WEST CHESTER, PA 19382  
484-653-2600  
WWW.IONXLIVE.COM

TITLE  
**ASSEMBLY DRAWING  
WSN-401**  
SIZE DWG NO. **C WSN-401** REV **D**  
SCALE: 1:1 SHEET 1 OF 1