

Contact person
Ermin Pasalic
Electronics
+46 10 516 55 57
ermin.pasalic@ri.se

Date
2019-04-09

Reference
8P07436-F3 photos

Page
1 (8)

FCC ID: 2ADEFAT-DG2, ISED ID: 12460A-ATDG2

Airtame ApS
Att: Kendra Bannister
Kuglegårdsvej 17
1434 Copenhagen K
Danmark

Equipment Authorization measurements on U-NII-3 RLAN FCC ID: 2ADEFAT-DG2 ISED ID: 12460A-ATDG2

Test object

Product name: Airtame 2
Product model of Airtame 2: AT-DG2
HW Revision: Airtame_DG2_V7_RB
FVIN: cyw89342-dfs_IIIg.clm_blob

RISE Research Institutes of Sweden AB Electronics - EMC

Performed by

Examined by

Ermin Pasalic

Monika Fuller

RISE Research Institutes of Sweden AB

Postal address	Office location	Phone / Fax / E-mail
Box 857	Brinellgatan 4	+46 10 516 50 00
SE-501 15 BORÅS	SE-504 62 BORÅS	+46 33 13 55 02
Sweden		info@ri.se

Laboratories are accredited by the Swedish Board for Accreditation and Conformity Assessment (SWEDAC) under the terms of Swedish legislation. This report may not be reproduced other than in full, except with the prior written approval of the issuing laboratory.



Table of Content

Photos..... 3

Photos

AT-DG2

Top view



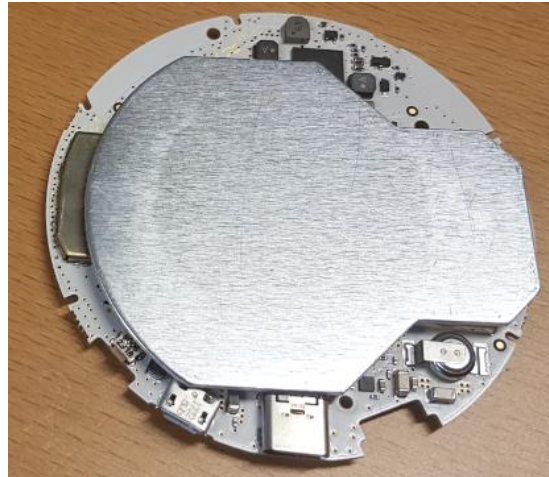
Bottom view



AT-DG2, Inside view



Inside view, top of PCB



Inside view, bottom of PCB

The test set-up during the radiated tests can be seen in the pictures below.

EUT



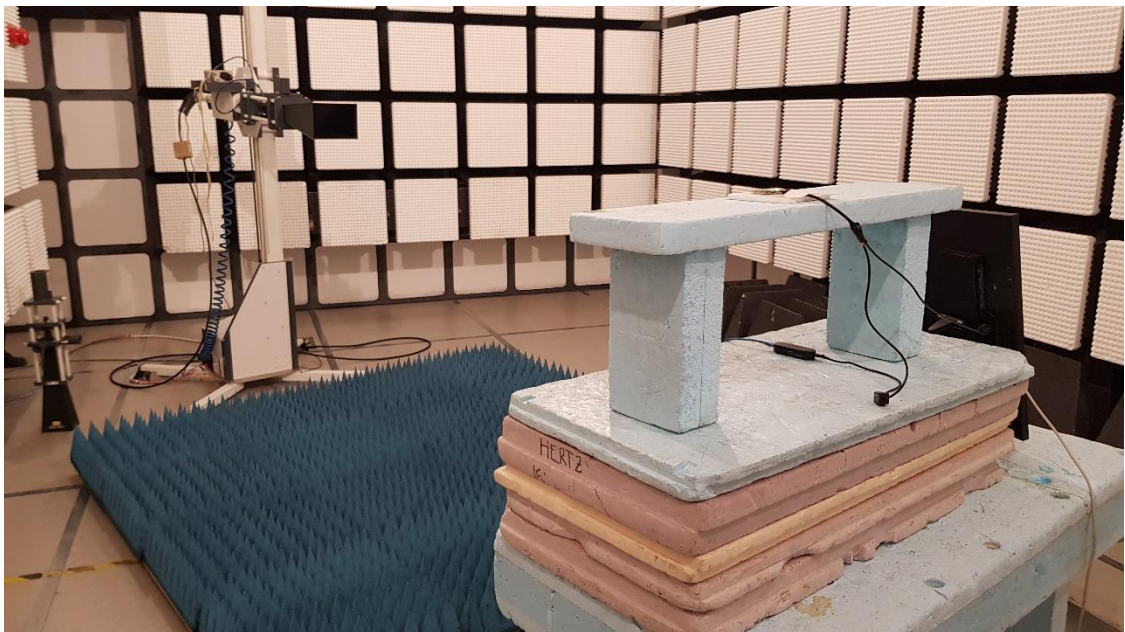
Radiated measurements 30-1000 MHz

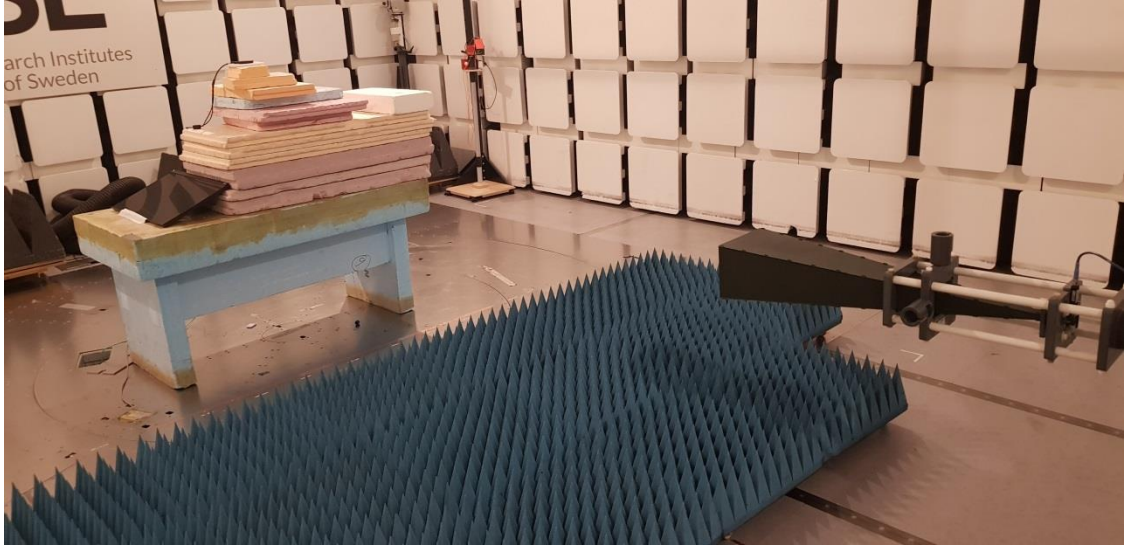
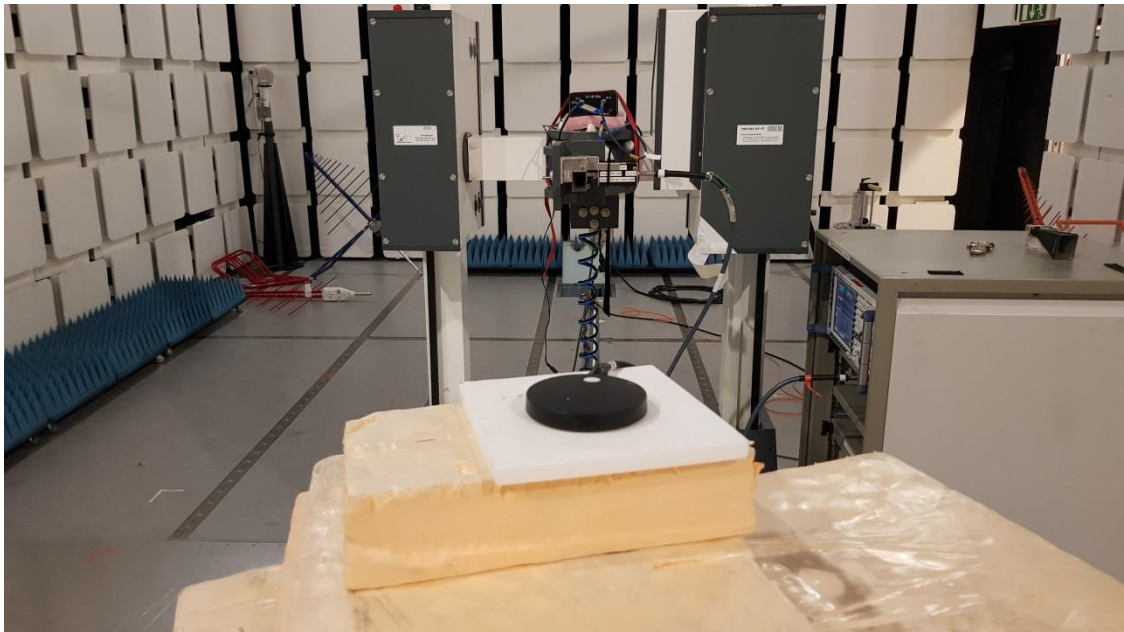


Radiated measurements 1-8.2 GHz



Radiated measurements 8.2-12.5 GHz



Radiated measurements 12.5-18 GHz**Radiated measurements 18-26.5 GHz**

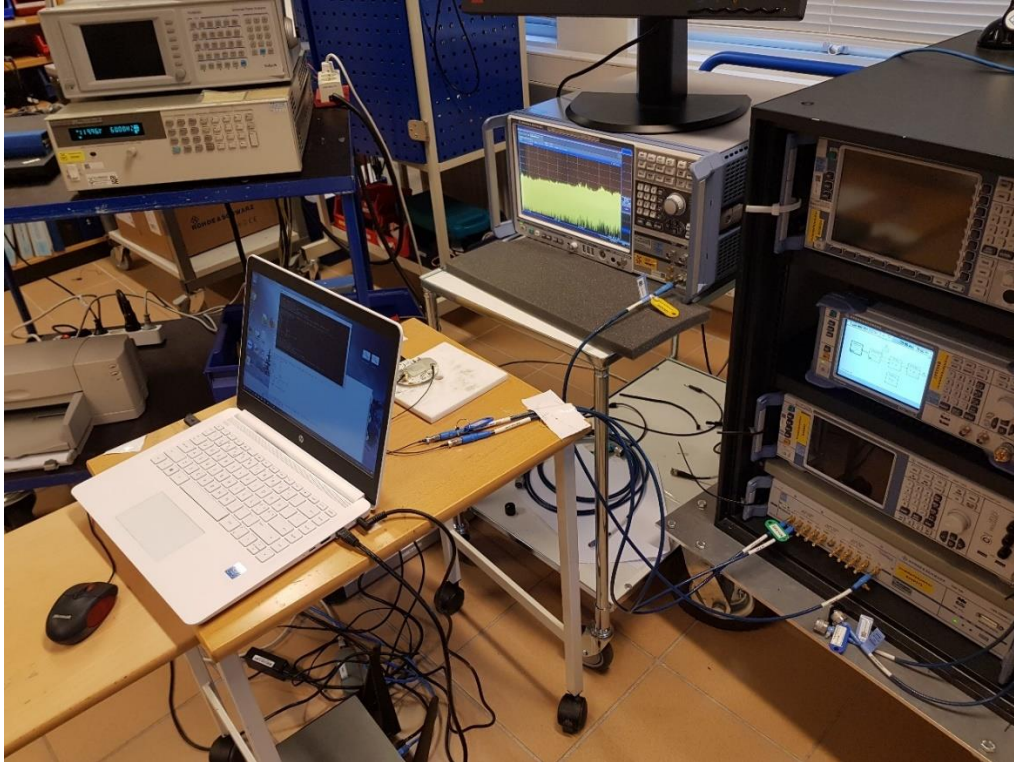
Radiated measurements 26.5-40 GHz



The test set-up during the conducted emission tests can be seen in the pictures below:



Tests in conductive mode:



Tests of Frequency stability according to FCC 47 CFR part 15.407 (g) / RSS-Gen 8.11:

