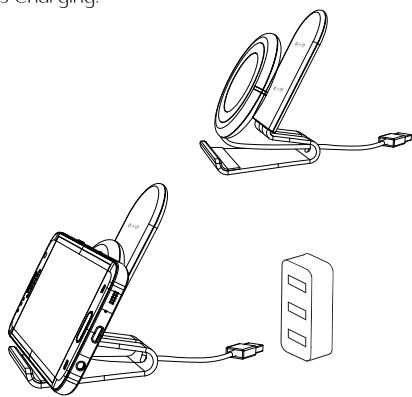


■ Horizontal On-Stand Charging

- » Place the Charging Pad on Magnet Position 2 of the Stand and pass USB Cable through the opening then plug cable into Compatible Power Supply. Once connected the Standby LED will turn Red
- » Place Wireless Charging Compatible Device on the Charging Pad in Horizontal Position, the LED Light will turn Blue which indicates the Device is Charging.



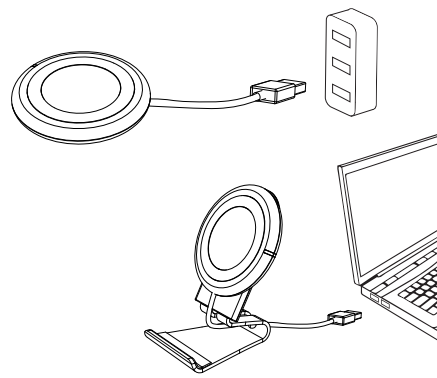
4.

Applicable Devices

- All devices with Built-in Wireless Charging Receiver or (Qi Compatible).

Instructions

- Connect USB Plug into Compatible Power Supply (for Optimal Charging use Min 2A Charging Supply), or PC / Laptop.



5.

Product Specifications

■ Input

- » DC 5V/2A, DC 9V/1.67A max
- » Transmission Power: 10W
- » Transmission Distance: ≤ 8mm
- » Conversion Efficiency: ≥ 72%

■ Size

- » Wireless Charging Pad Diameter: 75mm x 9.2mm
- » Mobile Phone Stand / Holder: H 100mm Thickness 5mm

Products Supplied

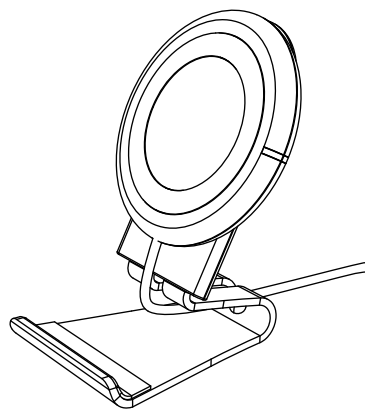
- » Wireless Charger Pad
- » Mobile Phone Stand / Holder
- » User Manual

Attention

- » Please keep the Charging Pad away from water and other liquids
- » Please make sure you disconnect power supply before cleaning
- » Safe Temperature Operation 45° C

6.

WIRELESS CHARGER



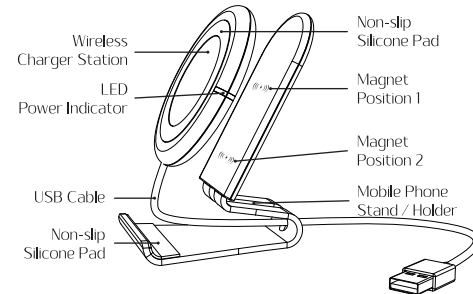
User Manual

Model No.: TB-WDC01

Product Introduction

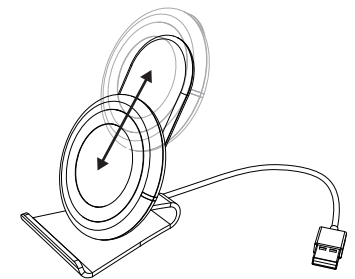
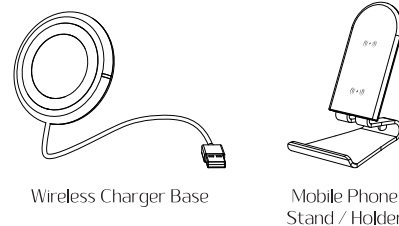
Thank you for purchasing this Wireless Fast Charger. This DistrakTed Wireless Fast Charger is an intelligent product with simple design features that is compatible with mobile devices which support the Qi Standard.

Product Outline



1.

This Wireless Charger is composed of a Wireless Station and Mobile Phone Stand. The Mobile Phone Stand has 2 Magnets which can be used to position the Wireless Charger at 2 different heights for both Horizontal or Vertical charging. The 2 magnetic positions is also handy for various charging point location on your device.



2.

Method of Use

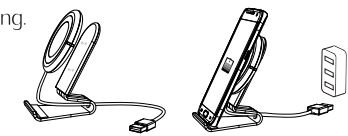
■ Base Only Charging

- » Connect USB Cable to Compatible Power Supply, the Standby LED Light will turn Red.
- » Place Wireless Charging Compatible Device on the Charging Pad, the LED Light will turn Blue which indicates the Device is Charging



■ Vertical On-Stand Charging

- » Place the Charging Pad on Magnet Position 1 of the Stand and pass USB Cable through the opening then plug cable into Compatible Power Supply. Once connected the Standby LED will turn Red
- » Place Wireless Charging Compatible Device on the Charging Pad in Vertical Position, the LED Light will turn Blue which indicates the Device is Charging.



3.

FCC ID: 2ADDWTB-WDC01

Shenzhen Topband Co.,Ltd

Model name: WIRELESS CHARGER

Model No.: TB-WDC01

This device complies with Part 15 of the FCC Rules.

Operation is subject to the following two conditions: (1) this device may not cause harmful interference, and (2) this device must accept any interference received, including interference that may cause undesired operation.

Changes or modifications not expressly approved by the party responsible for compliance could void the user's authority to operate the equipment.

Note: This equipment has been tested and found to comply with the limits for a Class B digital device, pursuant to part 15 of the FCC Rules. These limits are designed to provide reasonable protection against harmful interference in a residential installation. This equipment generates, uses and can radiate radio frequency energy and, if not installed and used in accordance with the instructions, may cause harmful interference to radio communications. However, there is no guarantee that interference will not occur in a particular installation. If this equipment does cause harmful interference to radio or television reception, which can be determined by turning the equipment off and on, the user is encouraged to try to correct the interference by one or more of the following measures:

- Reorient or relocate the receiving antenna.
- Increase the separation between the equipment and receiver.
- Connect the equipment into an outlet on a circuit different from that to which the receiver is connected.
- Consult the dealer or an experienced radio/TV technician for help.