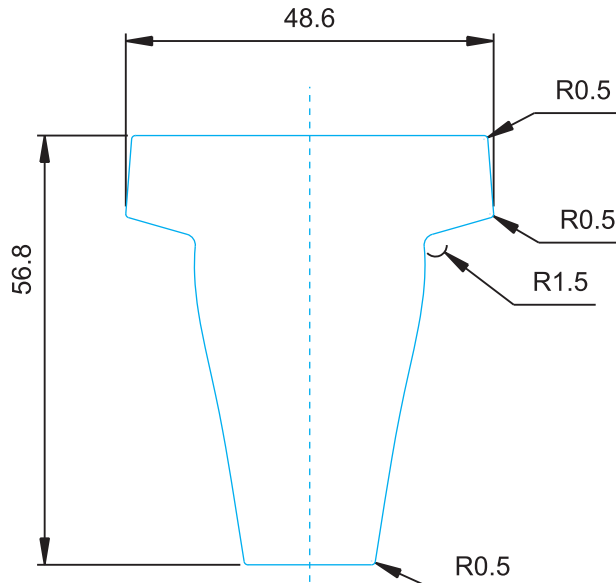


MILWAUKEE LOGO TO BE PRINTED WHITE,
ALL OTHER "WHITE" TEXT AND GRAPHICS TO
BE BASE STOCK MATERIAL

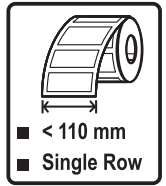


FINISHED LABEL



REFERENCE DIMENSIONS

NOTES:



REVISION HISTORY		DOC SIZE: A4	
DRAWING	01	02	
E.C.N. #	MM001513	MM00XXXX	
ISSUED DATE	02/26/2016	05/XX/2016	
<p>Dimensional Tolerance: All Dimensions + or - 1/8" Bar Code: Per ES-4-16 If Shown Note: Some Tool Art Contains Additional Black Screens for Definition & Shadow Fill</p>			
<p>MILWAUKEE ELECTRIC TOOL CORPORATION 1315 WEST LEBANON ROAD • BROOKFIELD, WI 53008</p>			

NOTES:

SERIAL NUMBER CODING METHOD:

1. TYPE STYLE FOR VARIABLE INFORMATION TO BE BLACK, 6 POINT SIZE IN AN APPROVED FONT, SUCH AS HELVETICA BOLD CONDENSED, ARIAL BOLD, OR COURIER BOLD.
2. REFER TO ES 19-1 FOR SERIALIZATION PROCEDURE.
 - A.) A THREE CHARACTER PREFIX (NUMERIC OR ALPHA-NUMERIC) TO DEFINE THE CATALOG NO. (**H22**)
 - B.) ONE ALPHA CHARACTER (A-Z) FOR SPL BREAKS (**A**)
 - C.) ONE CHARACTER NUMERIC (0-9) OR ALPHA (A-Z) FOR MANUFACTURING PLANT LOCATION (**9**)
 - D.) TWO DIGITS (00-99) FOR THE YEAR OF MANUFACTURE
 - E.) TWO DIGITS (01-52) FOR THE WEEK OF MANUFACTURE
 - F.) FIVE DIGITS (00001-99999) FOR INDIVIDUAL UNIT SERIALIZATION
 - G.) THE DATE CODE AND SERIAL NUMBER (IF ANY) CAN BE THERMAL PRINTED ON THE TOP OF THE LAMINATION.

EDITION: A

TITLE: NAMEPLATE

	PART NO.	941114181	CURRENT VERSION	02	MATERIAL
	DWN BY	K.A.G	ITEM ID NO.	MM00027681	CORE: 50# UL silver foil
	APP BY		SIZE	48.6x56.8 (±0.2mm)	LAMINATION: Gloss PET+Matt UV
	DATE	05/xx/2016	VENDOR		ADHESIVE: 2 MILACRYLIC BASED SYSTEM FOR USE ON POLYCARBONATE, NYLON, AND POLYPROPYLENE.
MILWAUKEE PART NUMBER	12252316	SCALE	100%	MUST BE A UL RECOGNIZED AND C.S.A. APPROVED MARKING AND LABELING SYSTEM.	
Approved By: S.Schneider	Approved By:	Approved By:	Approved By: M.Hickok	COLOR	
Mechanical Engineer / Graphic Designer	Electrical Engineer	Quality Assurance	Chief Graphic Designer / Engg, Manager	White + Black + PMS 186C + PMS 152C Total : 4C 	