

正面

73mm

69mm

Wireless Charger

User Manual

Model No.: WPA03

Other mobiles need a wireless charging receiver(include android phone and iPhone) (Note: All devices must be Qi standard)

Product Specification

Input: DC 5V/2A, 9V/2A, 12V/1.5A
Output: 5W/7.5W/10W/15W
Efficiency: ≥73%
Transmission Distance: < 8mm
Conversion Efficiency: ≥72%
Standard: Qi wireless charging standard
Size: Ø110x20mm

LED Indicator

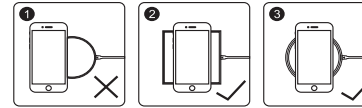
1. Charging: Mobile phone on , the LED long light blue means charging starts, when blue change to red means full charged.
2. Standby: LED light off.
3. FOD/Abnormal: red LED flash .

Remark:

1. Put on the phone, the fan starts automatically.
2. Take down the phone and the fan stops automatically.

Attention:

1. Please use a 9V/2A, 5V/2A, 12V/1.5A adapter and high quality cable to ensure charging effect.
2. Please keep the charger away from water or other liquid.
3. If you need to clean the charger, please make sure it is not connected power supply.
4. Using Environment temperature remains 0-45℃.



The handset requires a center-emitter for wireless charging, as shown.

Standard Accessories
Wireless Charger
USB Cable
User Manual

Product Introduction

Wireless charger is an intelligent product, with fabric design and compatible with any mobile phones with Qi standard. Mobile phone is without plug when charging, which is more convenient and efficient. It can bring you with limitless life experience as well as safe and free experience with wireless charging function.

This product is compatible with Qi standard



Made in China

FCC WARNING

This device complies with part 15 of the FCC Rules. Operation is subject to the following two conditions: (1) this device may not cause harmful interference, and (2) this device must accept any interference received, including interference that may cause undesired operation.

Any changes or modifications not expressly approved by the party responsible for compliance could void the user's authority to operate the equipment.

NOTE: This equipment has been tested and found to comply with the limits for a Class B digital device, pursuant to Part 15 of the FCC Rules. These limits are designed to provide reasonable protection against harmful interference in a residential installation. This equipment generates, uses and can radiate radio frequency energy and, if not installed and used in accordance with the instructions, may cause harmful

interference to radio communications.

However, there is no guarantee that interference will not occur in a particular installation.

If this equipment does cause harmful interference to radio or television reception, which can be determined by turning the equipment off and on, the user is encouraged to try to correct the interference by one or more of the following measures:

- Reorient or relocate the receiving antenna.
- Increase the separation between the equipment and receiver.
- Connect the equipment into an outlet on a circuit different from that to which the receiver is connected.
- Consult the dealer or an experienced radio/TV technician for help.

The equipment complies with FCC radiation exposure limits set forth for an uncontrolled environment. During the operation of device a distance of 15 cm surrounding the device and 20 cm above the top surface of the device must be respected.