



FCC TEST REPORT

FCC ID: 2ADDW-WCS02

On Behalf of

Shenzhen Topband Co., Ltd

Wireless Charging Stand

Model No.: WCS02

Prepared for : Shenzhen Topband Co., Ltd
Address : Topband Industrial Park, Liyuan Industrial Zone, Shiyan
Town, Bao'An District, Shenzhen 518108, China

Prepared By : Shenzhen Alpha Product Testing Co., Ltd.
Address : Building i, No.2, Lixin Road, Fuyong Street, Bao'an District,
518103, Shenzhen, Guangdong, China

Report Number : T1904002-C02-R01
Date of Receipt : April 9, 2019
Date of Test : April 9-28, 2019
Date of Report : May 10, 2019
Version Number : V0

TABLE OF CONTENTS

1. Test Result Summary	5
2. General Information.....	6
2.1. DESCRIPTION OF DEVICE (EUT).....	6
2.2. ACCESSORIES OF DEVICE (EUT).....	7
2.3. TESTED SUPPORTING SYSTEM DETAILS	7
2.4. BLOCK DIAGRAM OF CONNECTION BETWEEN EUT AND SIMULATORS	7
2.5. DESCRIPTION OF TEST MODES.....	7
2.6. TEST CONDITIONS	7
2.7. TEST FACILITY	8
2.8. MEASUREMENT UNCERTAINTY	8
2.9. TEST EQUIPMENT LIST.....	9
3. Test Results and Measurement Data	10
3.1. CONDUCTED EMISSION	10
3.2. RADIATED SPURIOUS EMISSION MEASUREMENT	14
3.3. OCCUPIED BANDWIDTH	21
4. Photos of test setup	23
5. Photographs of EUT	25

TEST REPORT DECLARATION

Applicant : Shenzhen Topband Co., Ltd
 Address : Topband Industrial Park, Liyuan Industrial Zone, Shiyan Town,
 Bao'An District, Shenzhen 518108, China
 Manufacturer : Shenzhen Topband Co., Ltd
 Address : Topband Industrial Park, Liyuan Industrial Zone, Shiyan Town,
 Bao'An District, Shenzhen 518108, China
 EUT Description : Wireless Charging Stand
 (A) Model No. : WCS02
 (B) Trademark : Topband

Measurement Standard Used:

FCC CFR Title 47 Part 15 Subpart C Section 15.209

The device described above is tested by Shenzhen Alpha Product Testing Co., Ltd. to determine the maximum emission levels emanating from the device and the severe levels of the device can endure and its performance criterion. The test results are contained in this test report and Shenzhen Alpha Product Testing Co., Ltd. is assumed full responsibility for the accuracy and completeness of test. Also, this report shows that the EUT is technically compliant with the FCC CFR Title 47 Part 15 Subpart C Section 15.209 requirements.

This report applies to above tested sample only. This report shall not be reproduced in parts without written approval of Shenzhen Alpha Product Testing Co., Ltd.

Tested by (name + signature).....: Lucas Pang
Project Engineer



Approved by (name + signature).....: Simple Guan
Project Manager



Date of issue.....: May 10, 2019

Revision History

Revision	Issue Date	Revisions	Revised By
V0	May 10, 2019	Initial released Issue	Simple Guan

1. Test Result Summary

Requirement	CFR 47 Section	Result
Antenna requirement	§15.203	PASS
AC Power Line Conducted Emission	§15.207	PASS
Spurious Emission	§15.209(a)(f)	PASS
Occupied Bandwidth	§15.215 (c)	PASS

Note:

1. *PASS: Test item meets the requirement.*
2. *Fail: Test item does not meet the requirement.*
3. *N/A: Test case does not apply to the test object.*
4. *The test result judgment is decided by the limit of test standard.*

2. General Information

2.1. Description of Device (EUT)

EUT Name	:	Wireless Charging Stand
Model No.	:	WCS02
DIFF.	:	N/A
Trademark	:	Topband
Power supply	:	Input: DC 5V/2A, 9V/1.5A Qi output: 5W, 7.5W, 10W
Operation frequency	:	125-205KHz
Modulation	:	MSK
Antenna Type	:	Coil Antenna, Maximum Gain is 4dBi
Software version	:	V1.0
Hardware version	:	V1.0
Note	:	There are two coil antennas inside the EUT. The coil specifications are the same. The two antennas can transmit simultaneously. So the report reflects the data of two antennas.

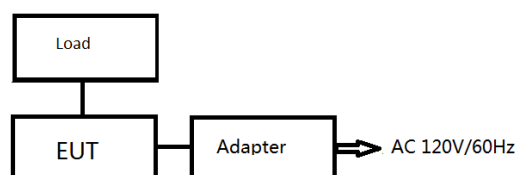
2.2. Accessories of Device (EUT)

Accessories1 : /
 Manufacturer : /
 Model : /
 Ratings : /

2.3. Tested Supporting System Details

No.	Description	Manufacturer	Model	Serial Number	Certification or DOC
1	Load	--	--	--	--
2	Adapter	YIBOYUAN	QC08	--	--

2.4. Block Diagram of connection between EUT and simulators



2.5. Description of Test Modes

Channel	Frequency (KHz)	Channel	Frequency (KHz)	Channel	Frequency (KHz)	Channel	Frequency (KHz)
1	125	6	150	11	175	16	200
2	130	7	155	12	180	17	205
3	135	8	160	13	185	18	
4	140	9	165	14	190	19	
5	145	10	170	15	195	20	

Note: Pre-San all output power mode, and only worst data listed in report (DC 5V/1A).

2.6. Test Conditions

Items	Required	Actual
Temperature range:	15-35°C	27°C
Humidity range:	25-75%	56%
Pressure range:	86-106kPa	980kPa

2.7. Test Facility

Shenzhen Alpha Product Testing Co., Ltd

Building i, No.2, Lixin Road, Fuyong Street, Bao'an District, 518103, Shenzhen, Guangdong, China

June 21, 2018 File on Federal Communication Commission

Registration Number: 293961

July 25, 2017 Certificated by IC

Registration Number: 12135A

2.8. Measurement Uncertainty

(95% confidence levels, k=2)

Item	MU	Remark
Uncertainty for Conducted Emission Test	2.74dB	
Uncertainty for Radiation Emission test in 3m chamber (30MHz to 1GHz)	3.77dB	Polarize: V
	3.80dB	Polarize: H
Uncertainty for Radiation Emission test in 3m chamber (1GHz to 25GHz)	4.16dB	Polarize: H
	4.13dB	Polarize: V
Uncertainty for radio frequency	5.4×10^{-8}	
Uncertainty for conducted RF Power	0.37dB	

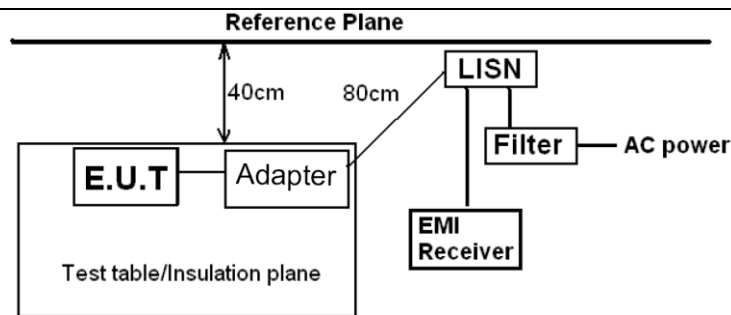
2.9. Test Equipment List

Equipment	Manufacture	Model No.	Serial No.	Last cal.	Cal Interval
3m Semi-Anechoic	ETS-LINDGREN	N/A	SEL0017	2018.09.21	1Year
Spectrum analyzer	Agilent	E4407B	MY46185649	2018.09.21	2019.09.20
Receiver	R&S	ESCI	1166.5950K03-1011	2018.09.21	1Year
Receiver	R&S	ESCI	101202	2018.09.21	1Year
Bilog Antenna	Schwarzbeck	VULB 9168	VULB9168-438	2018.04.13	2Year
Active Loop Antenna	SCHWARZBECK	FMZB 1519B	00059	2018.09.26	2Year
Cable	Resenberger	N/A	No.1	2018.09.21	1Year
Cable	SCHWARZBECK	N/A	No.2	2018.09.21	1Year
Cable	SCHWARZBECK	N/A	No.3	2018.09.21	1Year
Pre-amplifier	Schwarzbeck	BBV9743	9743-019	2018.09.21	1Year
Pre-amplifier	R&S	AFS33-18002650-30-8P-44	SEL0080	2018.09.21	1Year
Temperature controller	Terchy	MHQ	120	2018.09.21	1Year
L.I.S.N.#1	Schwarzbeck	NSLK8126	8126466	2018.09.21	1Year
L.I.S.N.#2	ROHDE&SCHWARZ	ENV216	101043	2018.09.21	1 Year
20db Attenuator	ICPROBING	IATS1	82347	2018.09.21	1 Year

3. Test Results and Measurement Data

3.1. Conducted Emission

3.1.1. Test Specification

Test Requirement:	FCC Part15 C Section 15.207														
Test Method:	ANSI C63.10:2013														
Frequency Range:	150 kHz to 30 MHz														
Receiver setup:	RBW=9 kHz, VBW=30 kHz, Sweep time=auto														
Limits:	<table border="1"> <thead> <tr> <th rowspan="2">Frequency range (MHz)</th> <th colspan="2">Limit (dBuV)</th> </tr> <tr> <th>Quasi-peak</th> <th>Average</th> </tr> </thead> <tbody> <tr> <td>0.15-0.5</td> <td>66 to 56*</td> <td>56 to 46*</td> </tr> <tr> <td>0.5-5</td> <td>56</td> <td>46</td> </tr> <tr> <td>5-30</td> <td>60</td> <td>50</td> </tr> </tbody> </table>	Frequency range (MHz)	Limit (dBuV)		Quasi-peak	Average	0.15-0.5	66 to 56*	56 to 46*	0.5-5	56	46	5-30	60	50
Frequency range (MHz)	Limit (dBuV)														
	Quasi-peak	Average													
0.15-0.5	66 to 56*	56 to 46*													
0.5-5	56	46													
5-30	60	50													
Test Setup:	 <p><i>Remark</i> E.U.T: Equipment Under Test LISN: Line Impedance Stabilization Network Test table height=0.8m</p>														
Test Mode:	Charging + Transmitting Mode														
Test Procedure:	<ol style="list-style-type: none"> 1. The E.U.T is connected to an adapter through a line impedance stabilization network (L.I.S.N.). This provides a 50ohm/50uH coupling impedance for the measuring equipment. 2. The peripheral devices are also connected to the main power through a LISN that provides a 50ohm/50uH coupling impedance with 50ohm termination. (Please refer to the block diagram of the test setup and photographs). 3. Both sides of A.C. line are checked for maximum conducted interference. In order to find the maximum emission, the relative positions of equipment and all of the interface cables must be changed according to ANSI C63.10: 2013 on conducted measurement. 														
Test Result:	PASS														

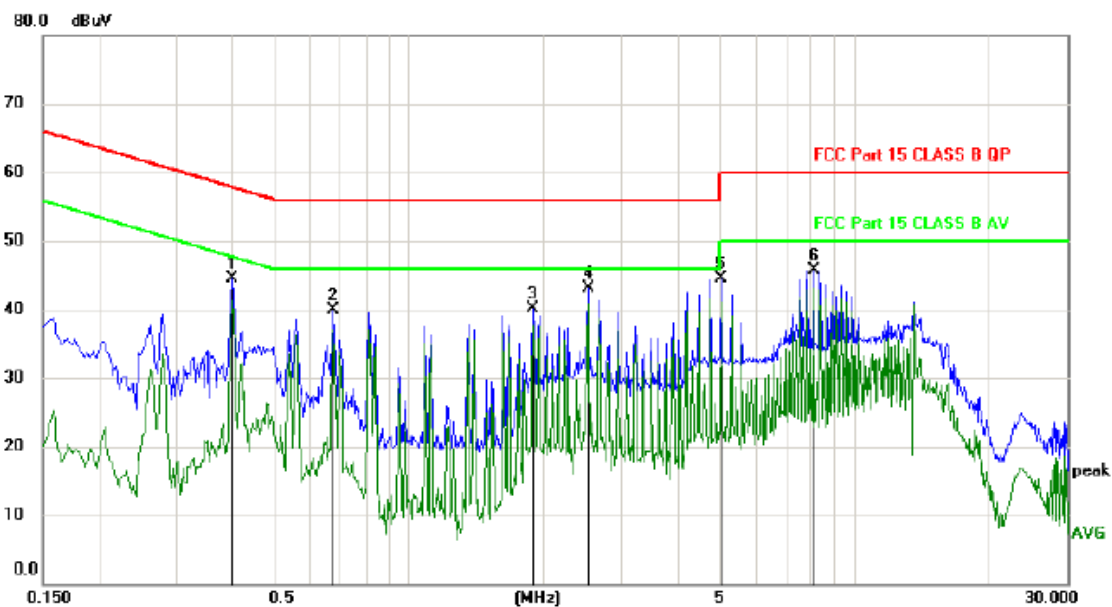
3.1.2. Test data

Please refer to following diagram for individual

Test Mode : Full load, Half load, Empty load
Test Results : PASS
Note: The test results are listed in next pages. This mode is worst case mode, so this report only reflected the worst mode. If the limits for the measurement with the average detector are met when using a receiver with a peak detector, the test unit shall be deemed to meet both limits and the measurement with the average detector and quasi-peak detector need not be carried out. If the limits for the measurement with the average detector are met when using a receiver with a quasi-peak detector, the test unit shall be deemed to meet both limits and the measurement with the average detector need not be carried out.

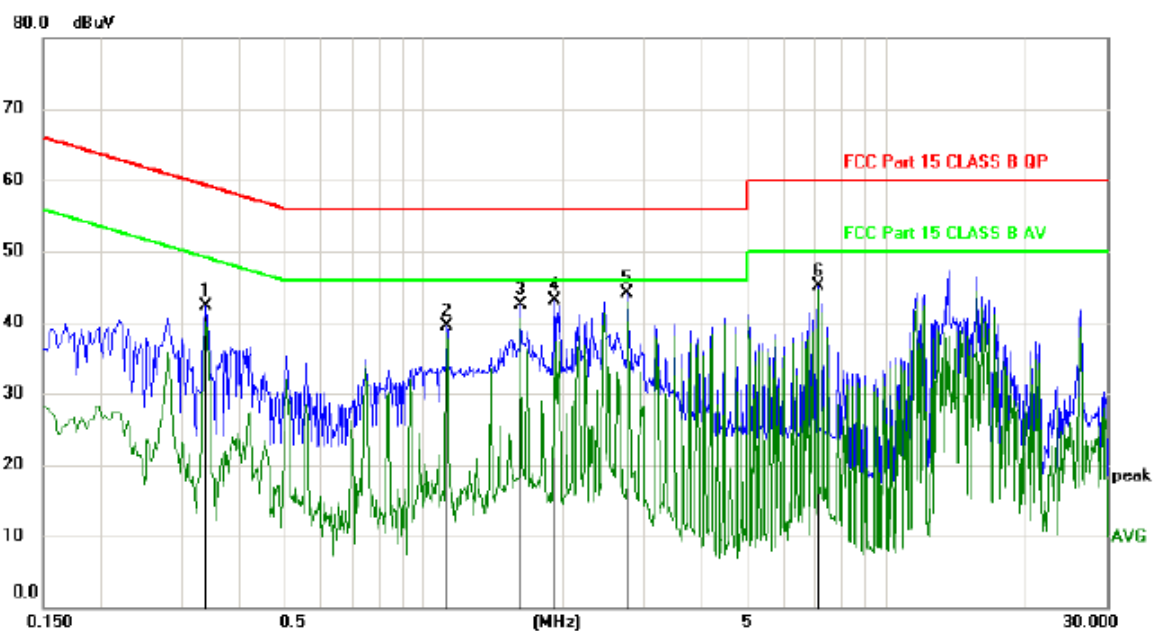
Test result for Channel 125KHz, AC 120V/ 60Hz(Full Load Mode)

Line:



No. Mk.	Freq. MHz	Reading Level dBuV	Correct Factor dB	Measurement dBuV	Limit dBuV	Margin dB	Detector	Comment
1	0.3990	44.42	0.10	44.52	57.87	-13.35	peak	
2	0.6750	39.83	0.10	39.93	56.00	-16.07	peak	
3	1.8959	40.08	0.10	40.18	56.00	-15.82	peak	
4 *	2.5200	42.90	0.11	43.01	56.00	-12.99	peak	
5	5.0190	44.31	0.13	44.44	60.00	-15.56	peak	
6	8.0880	45.57	0.17	45.74	60.00	-14.26	peak	

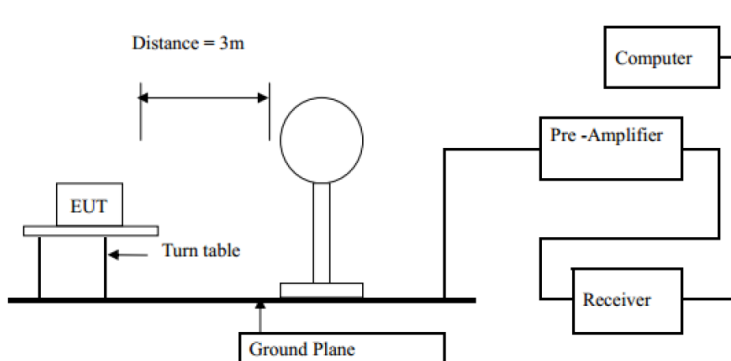
Neutral:

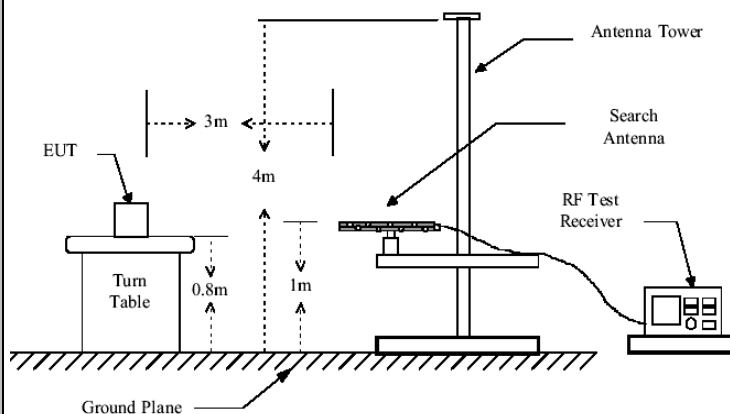


No. Mk.	Freq. MHz	Reading Level dBuV	Correct Factor dB	Measurement dBuV	Limit dBuV	Margin dB	Detector	Comment
1	0.3390	42.15	0.10	42.25	59.23	-16.98	peak	
2	1.1217	39.48	0.10	39.58	56.00	-16.42	peak	
3	1.6169	42.46	0.10	42.56	56.00	-13.44	peak	
4	1.9109	42.98	0.10	43.08	56.00	-12.92	peak	
5 *	2.7629	44.02	0.12	44.14	56.00	-11.86	peak	
6	7.1040	44.89	0.16	45.05	60.00	-14.95	peak	

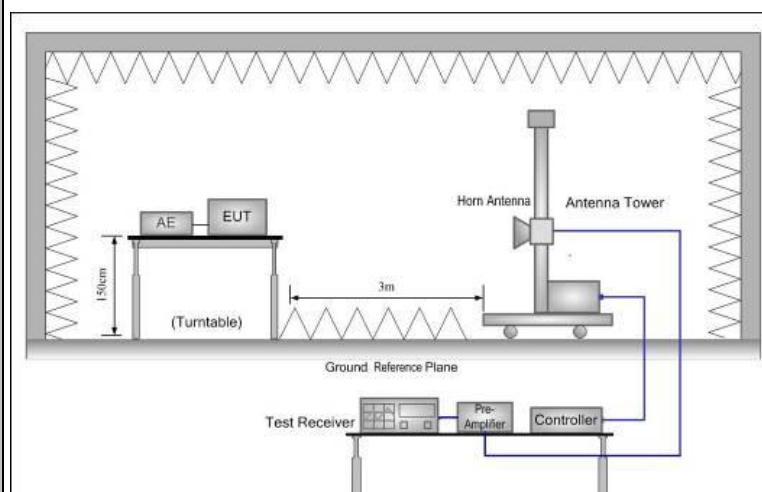
3.2. Radiated Spurious Emission Measurement

3.2.1. Test Specification

Test Requirement:	FCC Part15 C Section 15.209					
Test Method:	ANSI C63.10: 2013					
Frequency Range:	9 kHz to 25 GHz					
Measurement Distance:	3 m					
Antenna Polarization:	Horizontal & Vertical					
Operation mode:	Refer to item 4.1					
Receiver Setup:	Frequency	Detector	RBW	VBW	Remark	
	9kHz- 150kHz	Quasi-peak	200Hz	1kHz	Quasi-peak Value	
	150kHz- 30MHz	Quasi-peak	9kHz	30kHz	Quasi-peak Value	
	30MHz-1GHz	Quasi-peak	100KHz	300KHz	Quasi-peak Value	
	Above 1GHz	Peak	1MHz	3MHz	Peak Value	
		Peak	1MHz	10Hz	Average Value	
Limit:	Frequency	Field Strength (microvolts/meter)	Measurement Distance (meters)			
	0.009-0.490	2400/F(KHz)	300			
	0.490-1.705	24000/F(KHz)	30			
	1.705-30	30	30			
	30-88	100	3			
	88-216	150	3			
	216-960	200	3			
	Above 960	500	3			
	Frequency	Field Strength (microvolts/meter)	Measurement Distance (meters)	Detector		
	Above 1GHz	500	3	Average		
	5000	3	Peak			
Test setup:	For radiated emissions below 30MHz					
	 <p>The diagram illustrates the test setup for radiated emissions below 30MHz. It shows an Equipment Under Test (EUT) on a turn table, positioned at a distance of 3 meters from a circular antenna. The antenna is mounted on a ground plane. The antenna is connected to a Pre-Amplifier, which is connected to a Receiver. The Receiver is connected to a Computer.</p>					
	30MHz to 1GHz					



Above 1GHz

**Test Procedure:**

1. For the radiated emission test below 1GHz:
The EUT was placed on a turntable with 0.8 meter above ground. The EUT was set 3 meters from the interference receiving antenna, which was mounted on the top of a variable height antenna tower. The EUT was arranged to its worst case and then tune the antenna tower (from 1 m to 4 m) and turntable (from 0 degree to 360 degrees) to find the maximum reading. A pre-amp and a high PASS filter are used for the test in order to get better signal level.
- For the radiated emission test above 1GHz:
Place the measurement antenna on a turntable with 1.5 meter above ground, which is away from each area of the EUT determined to be a source of emissions at the specified measurement distance, while keeping the measurement antenna aimed at the source of emissions at each frequency of significant emissions, with polarization oriented for maximum response. The measurement antenna may have to be higher or lower than the EUT, depending on the radiation pattern of the emission and staying aimed at the emission source for receiving the maximum signal. The final measurement antenna elevation shall be that which

	<p>maximizes the emissions. The measurement antenna elevation for maximum emissions shall be restricted to a range of heights of from 1 m to 4 m above the ground or reference ground plane.</p> <ol style="list-style-type: none"> 2. Corrected Reading: Antenna Factor + Cable Loss + Read Level - Preamp Factor = Level 3. For measurement below 1GHz, If the emission level of the EUT measured by the peak detector is 3 dB lower than the applicable limit, the peak emission level will be reported. Otherwise, the emission measurement will be repeated using the quasi-peak detector and reported. 4. Use the following spectrum analyzer settings: <ol style="list-style-type: none"> (1) Span shall wide enough to fully capture the emission being measured; (2) Set RBW=100 kHz for $f < 1$ GHz; VBW \geqRBW; Sweep = auto; Detector function = peak; Trace = max hold; (3) Set RBW = 1 MHz, VBW= 3MHz for $f \geq 1$ GHz for peak measurement. <p>For average measurement: VBW = 10 Hz, when duty cycle is no less than 98 percent. VBW $\geq 1/T$, when duty cycle is less than 98 percent where T is the minimum transmission duration over which the transmitter is on and is transmitting at its maximum power control level for the tested mode of operation.</p>
Test mode:	Refer to section 4.1 for details
Test results:	PASS

3.2.2. Test Data

Please refer to following diagram for individual

Frequency Range	: 9KHz~30MHz
Test Mode	: TX: channel low, channel mid, channel high
Test Results	: PASS
Note:	<p>1. The test results are listed in next pages.</p> <p>2. This mode is worst case mode, so this report only reflected the worst mode.</p> <p>3. If the limits for the measurement with the average detector are met when using a receiver with a peak detector, the test unit shall be deemed to meet both limits and the measurement with the quasi-peak detector need not be carried out.</p>

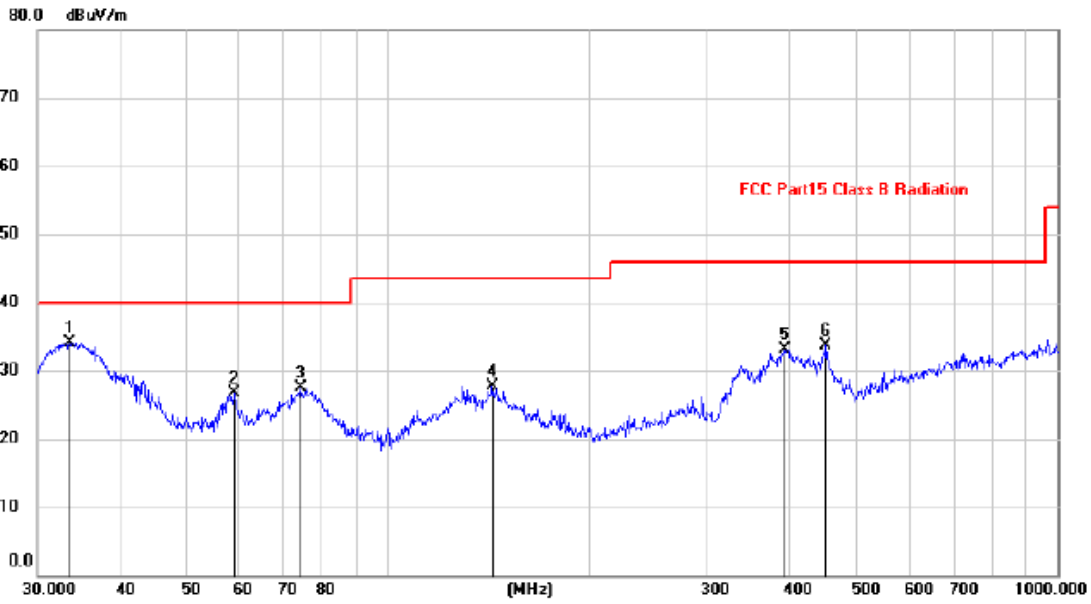
Freq.	Reading	Antenna Factor	Cable loss	Amp Factor	Result	Limit	Margin	Detect or	State
(MHz)	(dBuV/m)	dB/m	dB	dB	(dBuV/m)	(dBuV/m) at 3 m	(dB)		P/F
0.125	24.34	48.34	0.16	29.87	42.97	126.77	-83.80	PK	PASS
0.125	19.07	48.34	0.16	29.87	37.70	106.77	-69.07	AV	PASS
0.175	92.72	48.34	0.16	29.87	111.35	122.95	-11.60	PK	PASS
0.175	69.51	48.34	0.16	29.87	88.14	102.95	-14.81	AV	PASS
0.205	49.46	48.38	0.17	29.89	68.12	120.76	-52.64	PK	PASS
0.205	46.44	48.38	0.17	29.89	65.10	100.76	-35.66	AV	PASS
0.35	44.60	48.44	0.19	29.89	63.34	117.78	-54.44	PK	PASS
0.35	42.34	48.44	0.19	29.89	61.08	97.78	-36.70	AV	PASS
0.45	44.90	48.47	0.19	29.89	63.67	115.35	-51.68	PK	PASS
0.45	42.18	48.47	0.19	29.89	60.95	95.35	-34.40	AV	PASS
1.928	18.57	49.12	0.2	29.94	37.95	60	-22.05	QP	PASS
1.920	21.48	49.12	0.2	29.94	40.86	60	-19.14	QP	PASS

Frequency Range	: 30MHz~1000MHz
Test Mode	: Full load, Half load, Empty load
Test Results	: PASS
Note:	<p>1. The test results are listed in next pages.</p> <p>2. This mode is worst case mode, so this report only reflected the worst mode.</p> <p>3. If the limits for the measurement with the average detector are met when using a receiver with a peak detector, the test unit shall be deemed to meet both limits and the measurement with the quasi-peak detector need not be carried out.</p>

Frequency Range	: Above 1GHz		
EUT	: /	Test Date	: /
M/N	: /	Temperature	: /
Test Engineer	: /	Humidity	: /
Test Mode	: /		
Test Results	: N/A		
Note:	<p>1. The highest frequency of the internal sources of the EUT is less than 108 MHz, the measurement shall only be made up to 1 GHz. So the frequency rang above 1GHz radiation test not applicable.</p>		

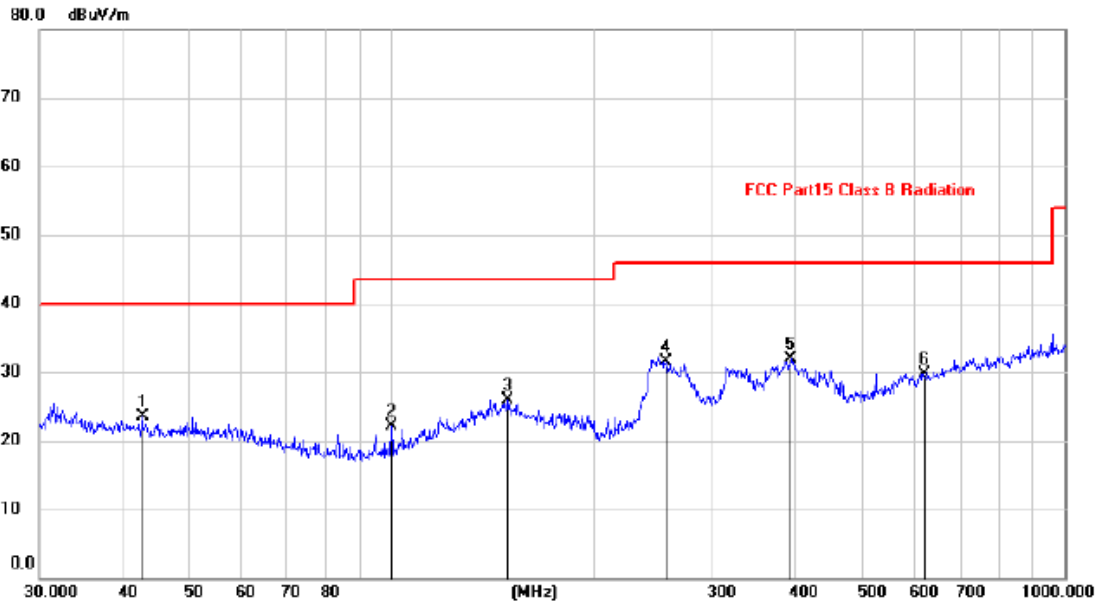
Test result for Channel 125KHz, AC 120V/ 60Hz(Full Load Mode)
30MHz-1GHz

Horizontal:



No.	Mk.	Freq.	Reading Level	Correct Factor	Measurement	Limit	Margin	Antenna Height	Table Degree	
		MHz	dBuV	dB	dBuV/m	dBuV/m	dB	cm	degree	Comment
1	*	33.4449	20.69	13.44	34.13	40.00	-5.87			peak
2		59.0251	13.64	13.07	26.71	40.00	-13.29			peak
3		74.1351	17.02	10.41	27.43	40.00	-12.57			peak
4		143.3261	13.58	14.07	27.65	43.50	-15.85			peak
5		392.0951	17.79	15.40	33.19	46.00	-12.81			peak
6		451.1350	16.63	17.01	33.64	46.00	-12.36			peak

Vertical:




No.	Mk.	Freq. MHz	Reading Level dBuV	Correct Factor dB	Measure- ment dBuV/m	Limit dBuV/m	Margin dB	Antenna Height cm	Table Degree degree	Comment
1		42.7496	9.45	13.97	23.42	40.00	-16.58			peak
2		99.8777	11.47	10.60	22.07	43.50	-21.43			peak
3		148.9625	11.40	14.47	25.87	43.50	-17.63			peak
4		255.6231	19.36	12.21	31.57	46.00	-14.43			peak
5	*	393.4723	16.41	15.41	31.82	46.00	-14.18			peak
6		618.5369	10.04	19.68	29.72	46.00	-16.28			peak

Note:

Emission Level=Peak Reading + Correction Factor; Correction Factor= Antenna Factor + Cable loss – Pre-amplifier

3.3. Occupied bandwidth

3.3.1. Test Specification

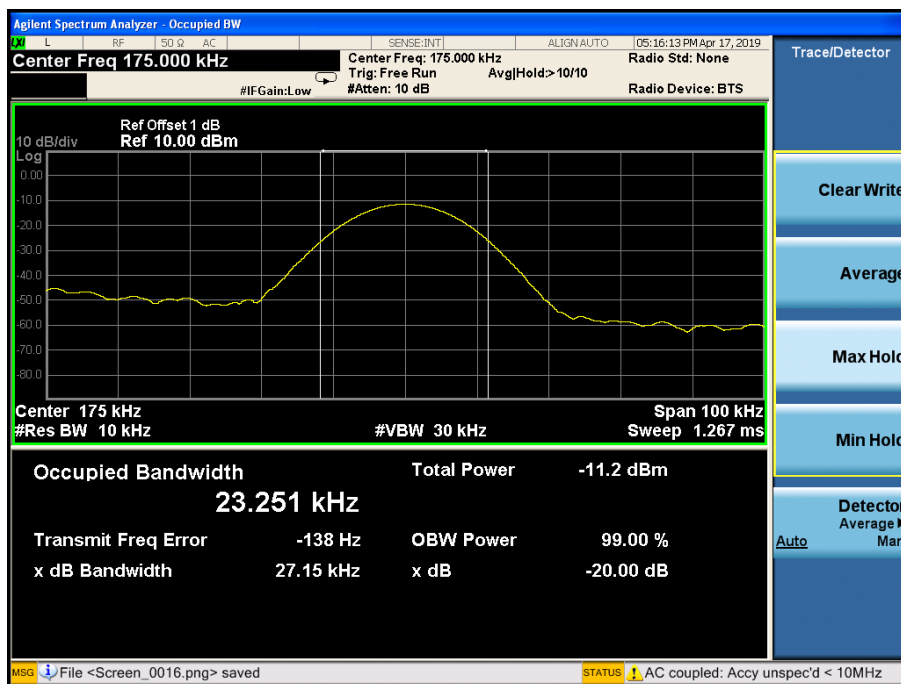
Test Requirement:	FCC Part15 C Section 15.215(c)
Test Method:	ANSI C63.10: 2013
Limit:	N/A
Test Procedure:	<ol style="list-style-type: none"> 1. According to the follow Test-setup, keep the relative position between the artificial antenna and the EUT. 2. Set to the maximum power setting and enable the EUT transmit continuously. 3. Use the following spectrum analyzer settings for 20dB Bandwidth measurement. Span = approximately 2 to 3 times the 20 dB bandwidth, centered on a hopping channel; $RBW \geq 1\%$ of the 20 dB bandwidth; $VBW \geq RBW$; Sweep = auto; Detector function = peak; Trace = max hold. 4. Measure and record the results in the test report.
Test setup:	 <p>The diagram illustrates the test setup. On the left is a Spectrum Analyzer, represented by a green rectangle with a blue screen and two red dots. A black cable connects it to a small white square, which is another cable. This second cable connects to a yellow rectangle representing the EUT (Equipment Under Test), which has a small white circle on its left side. Below the Spectrum Analyzer is the label 'Spectrum Analyzer' and below the EUT is the label 'EUT'.</p>
Test Mode:	Refer to section 4.1 for details
Test results:	PASS

3.3.2. Test data

Frequency(KHz)	20dB Occupy Bandwidth (kHz)	Limit (kHz)	Conclusion
175.0	27.15	---	PASS

Test plots as follows:

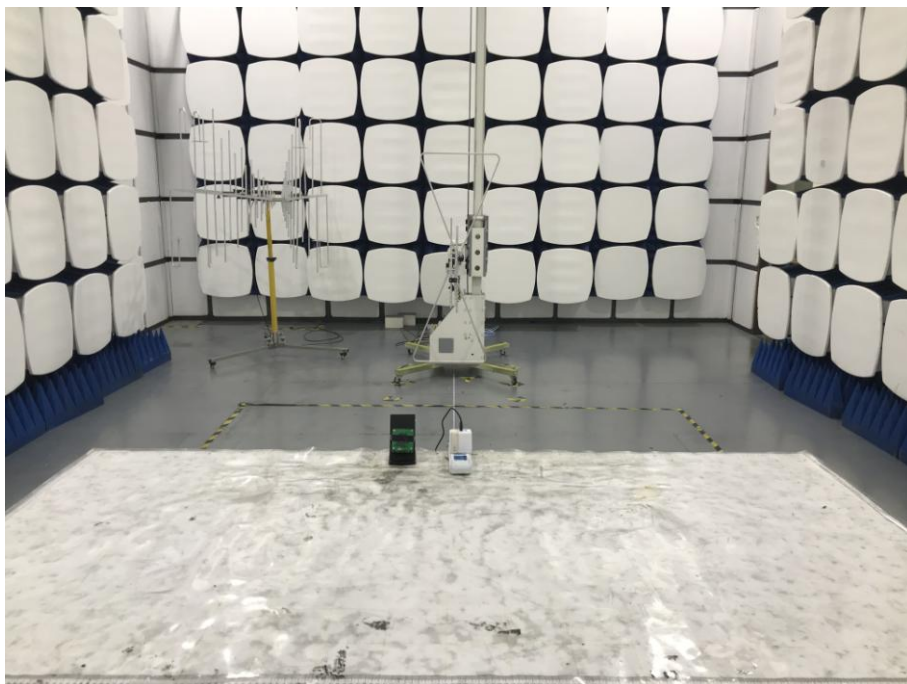
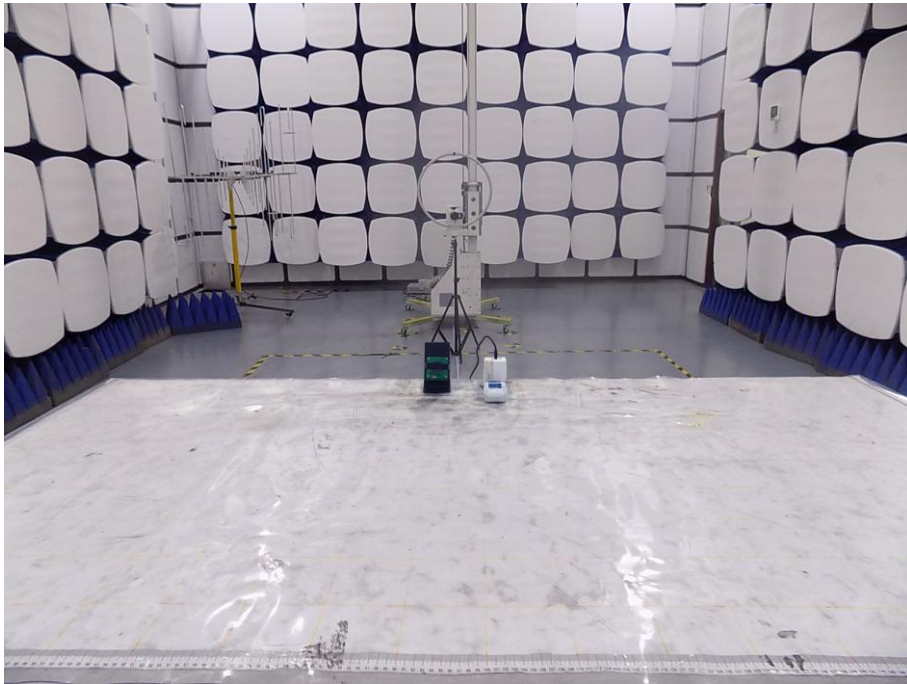
Lowest channel



Note: The Bandwidth of the two coil antennas is exactly the same.

4. Photos of test setup

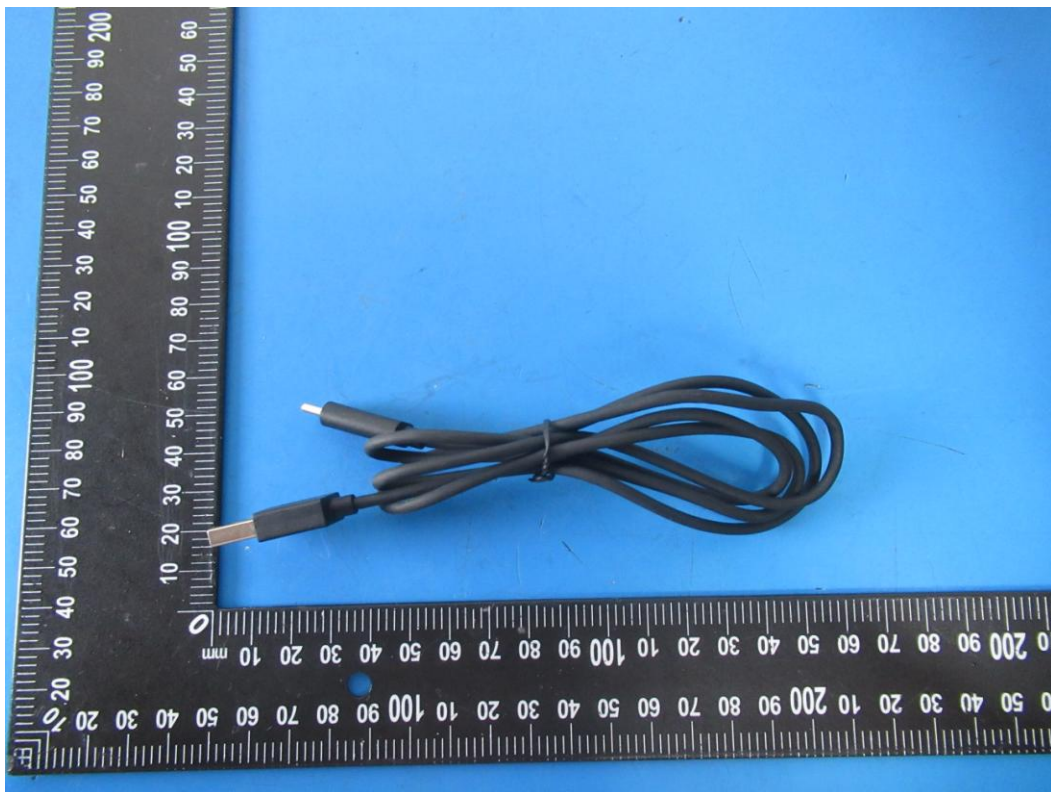
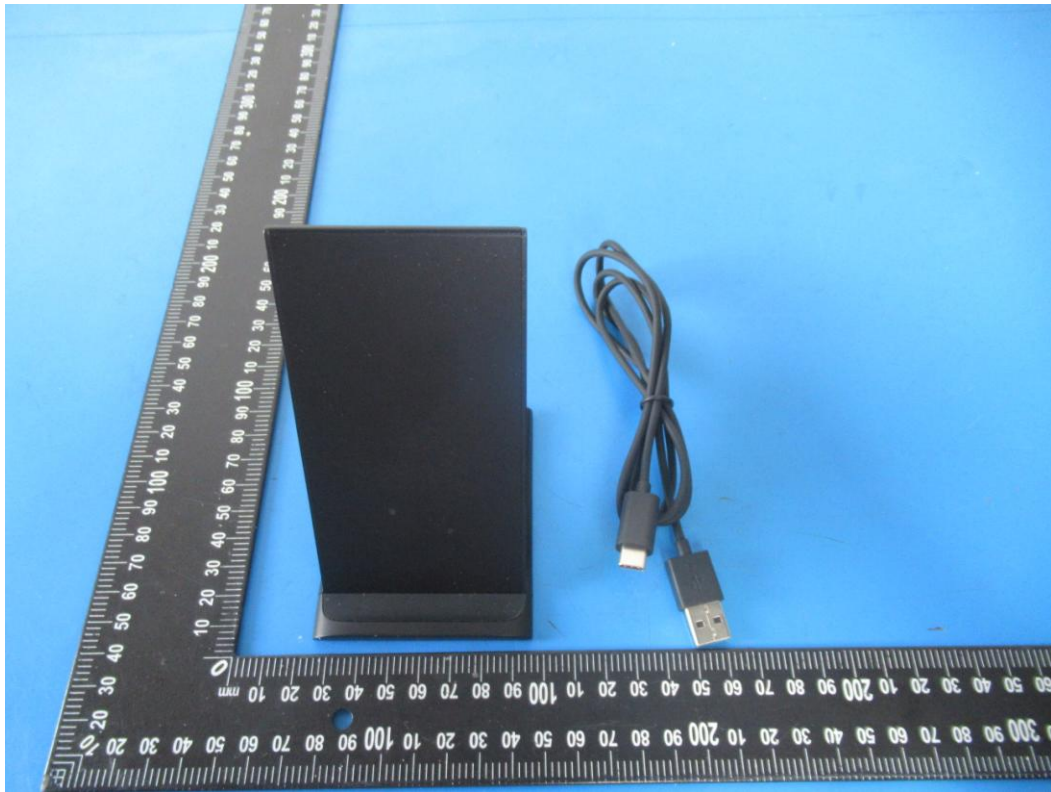
Radiated Emission

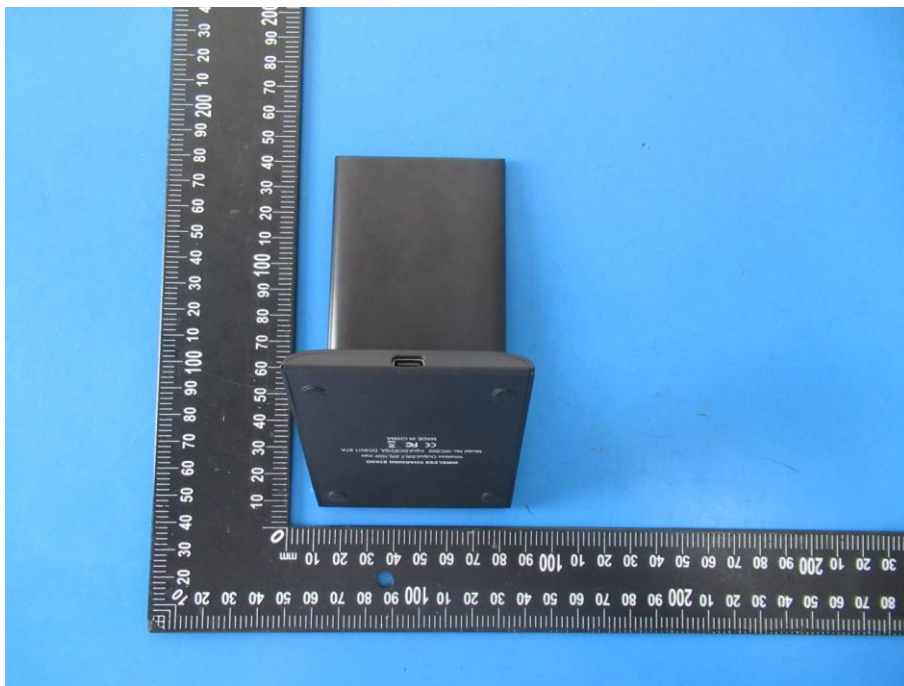
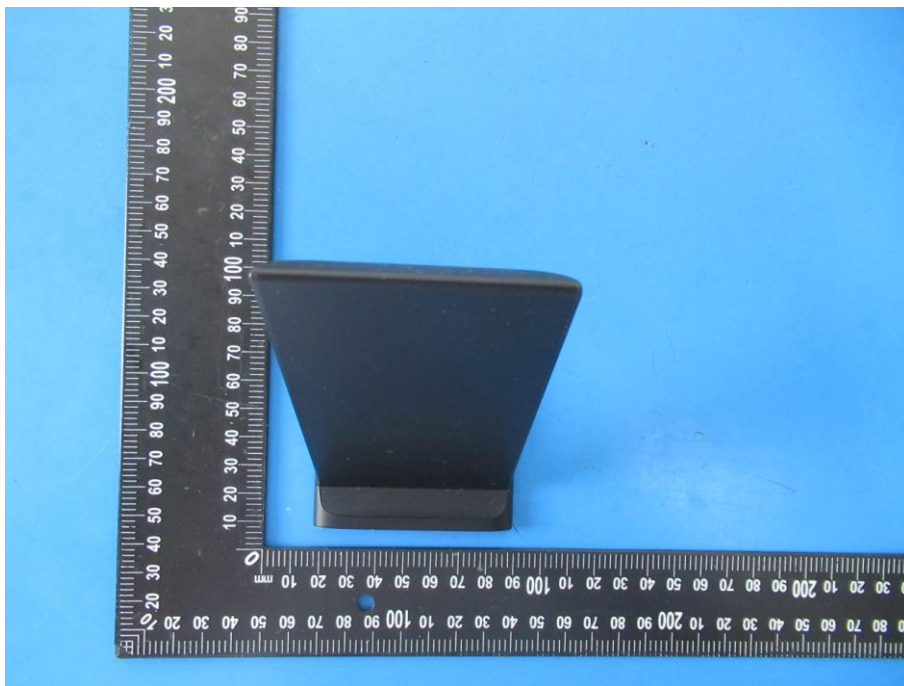


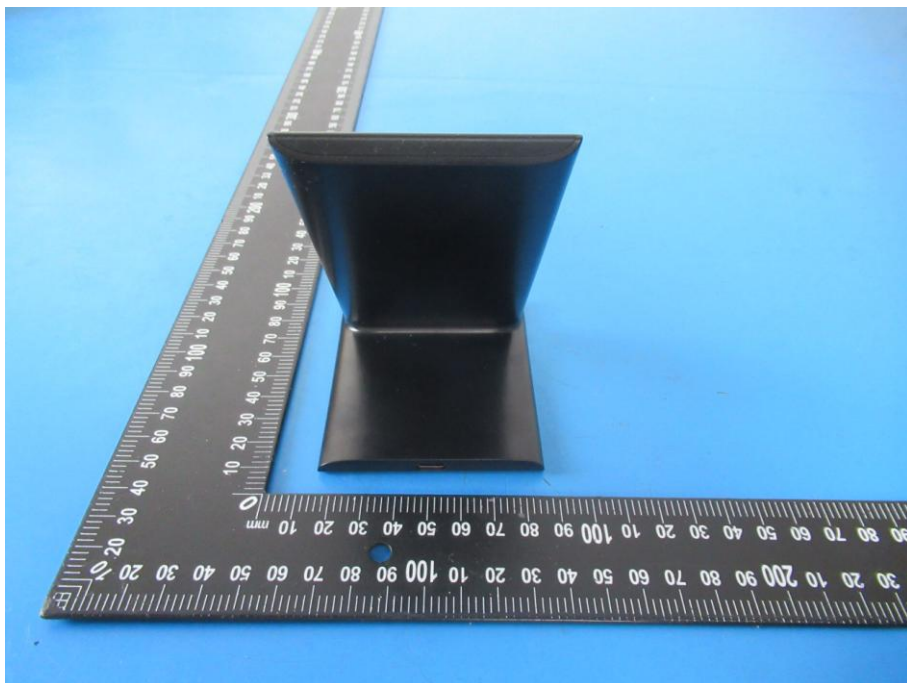
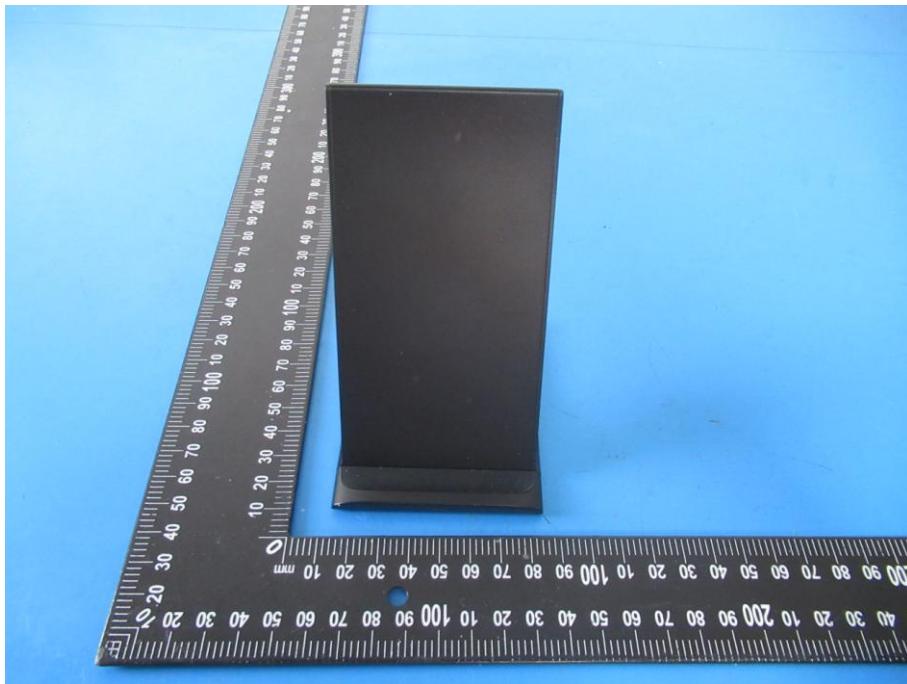
Conducted Emission

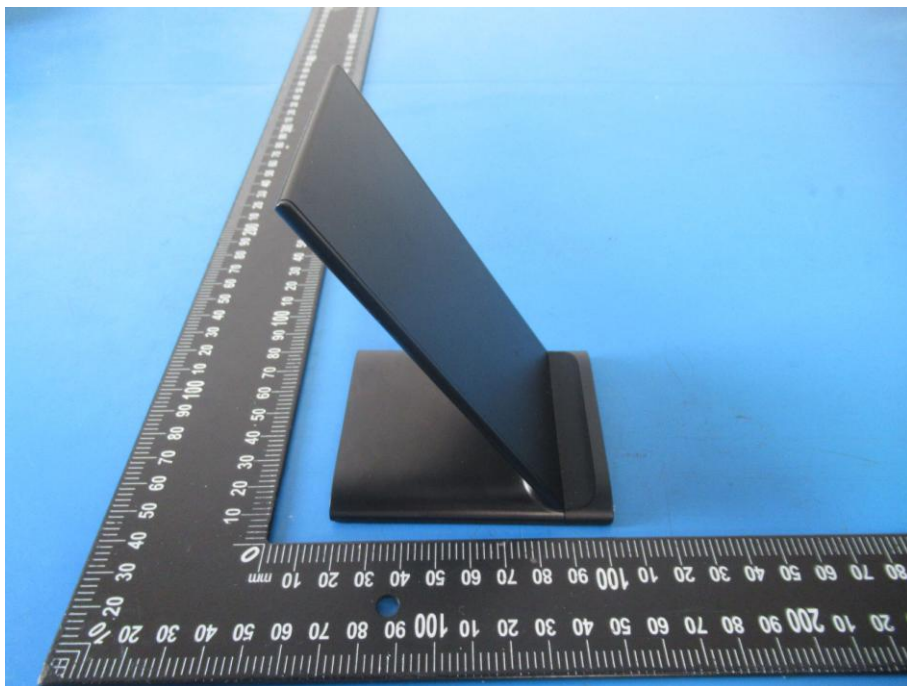
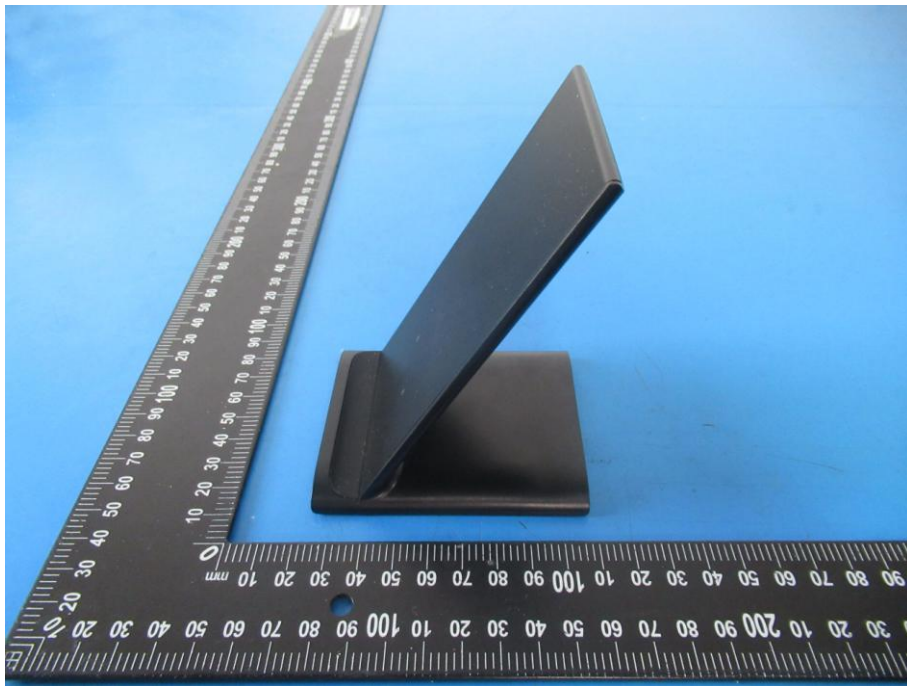


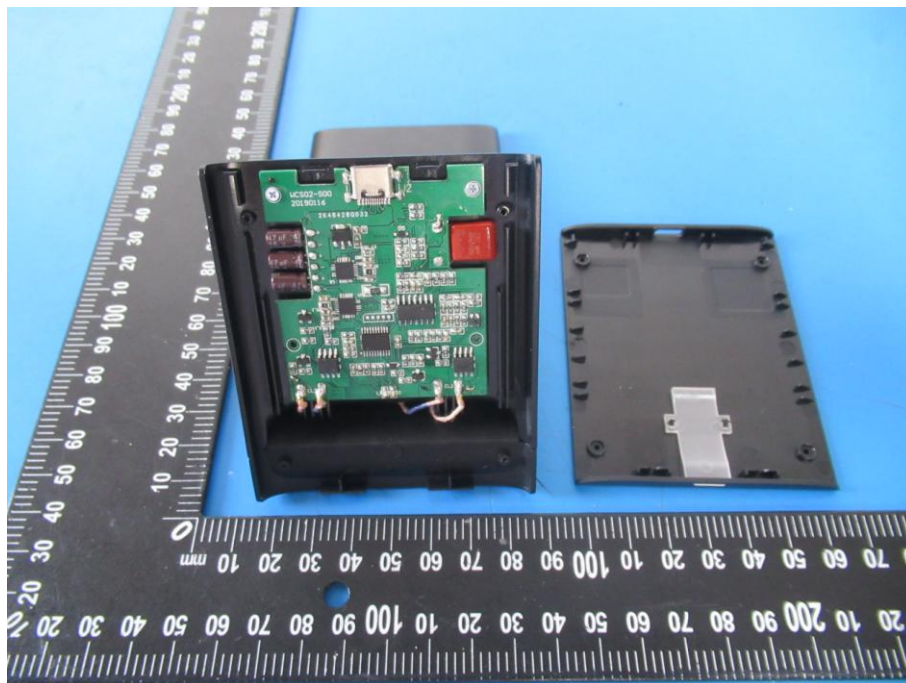
5. Photographs of EUT

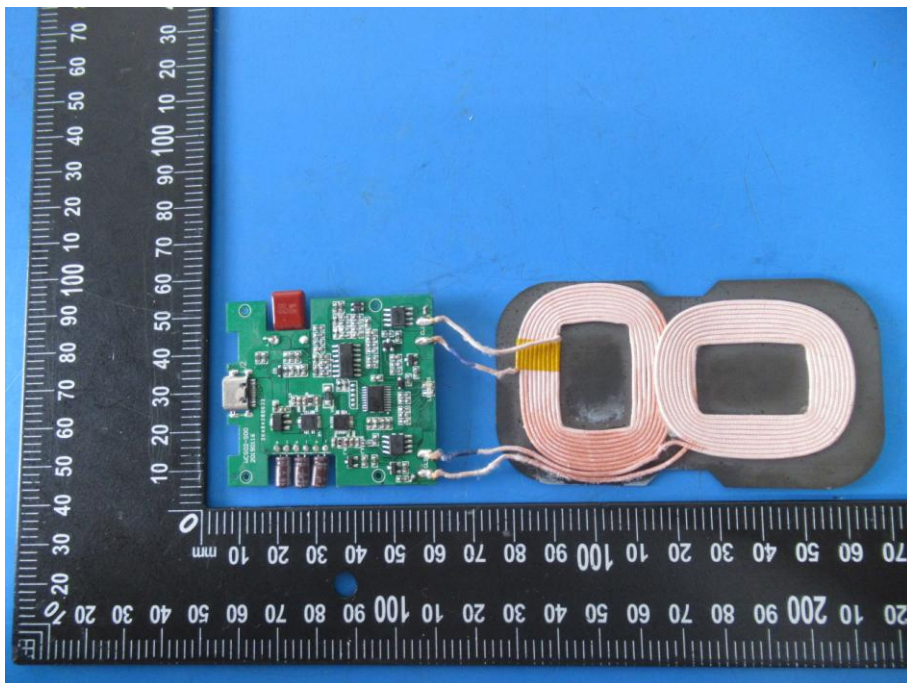
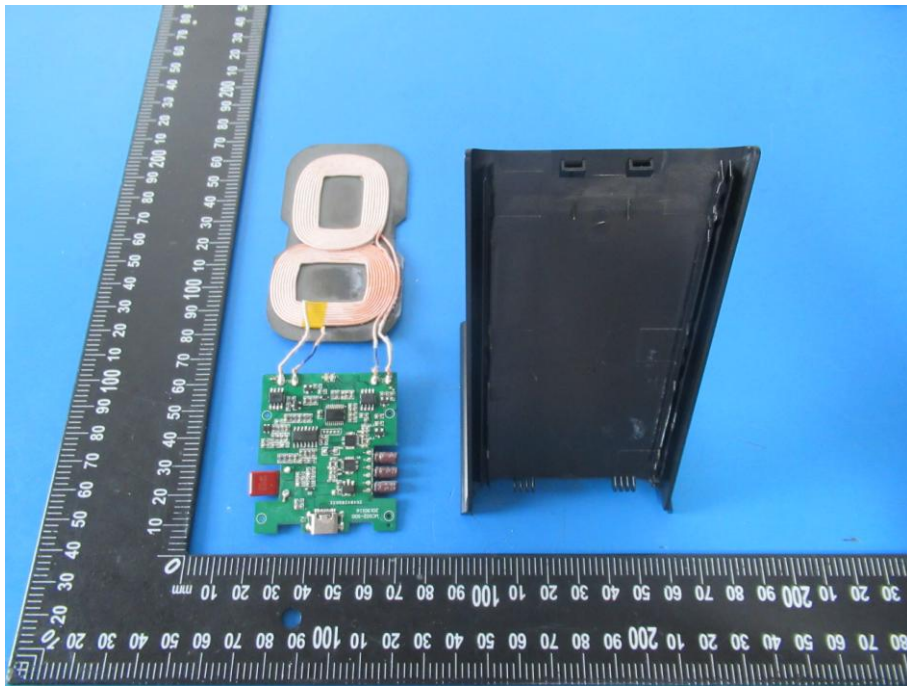


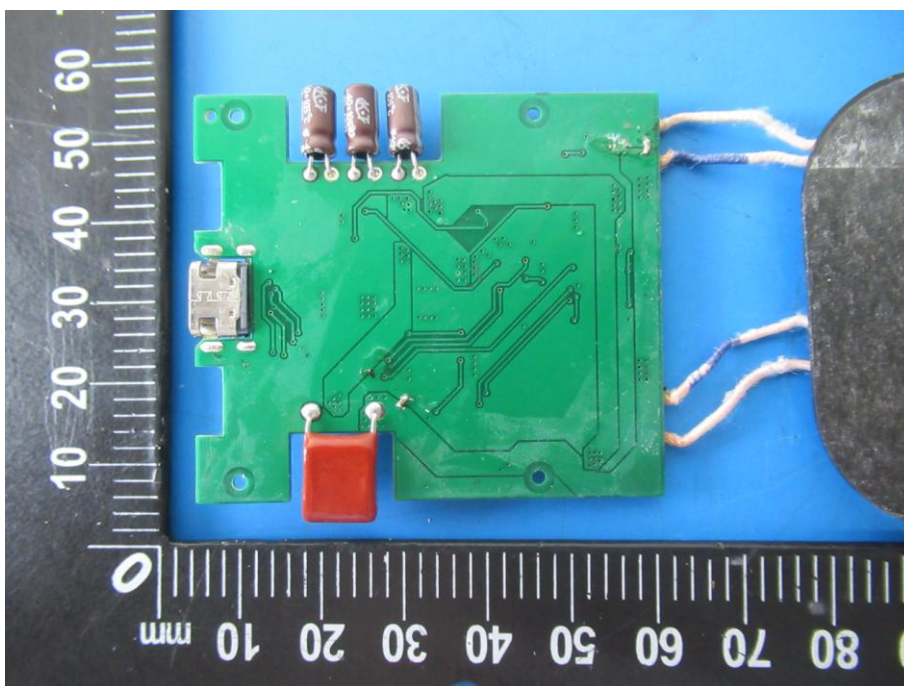
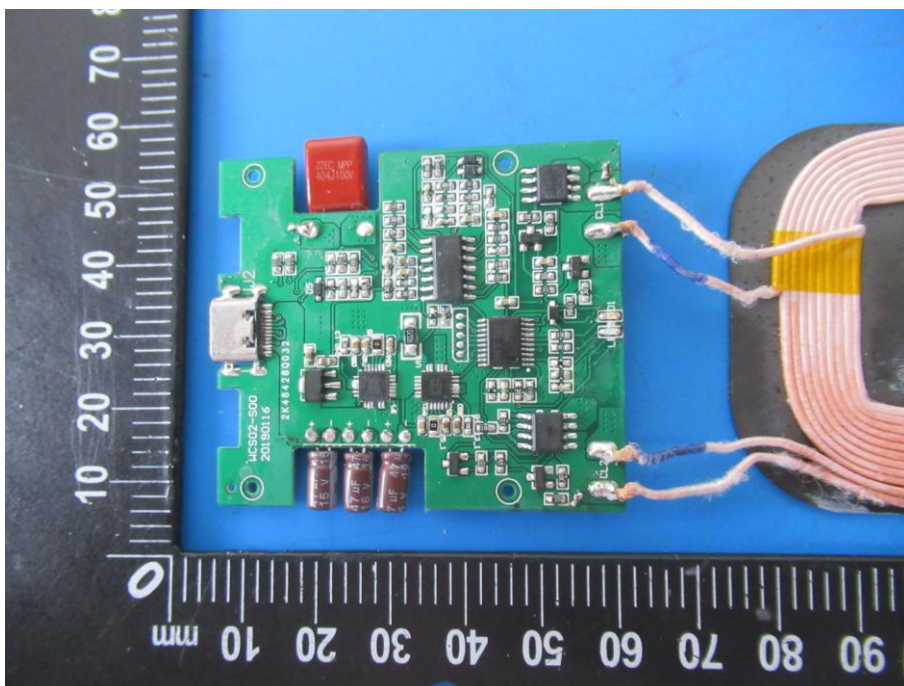


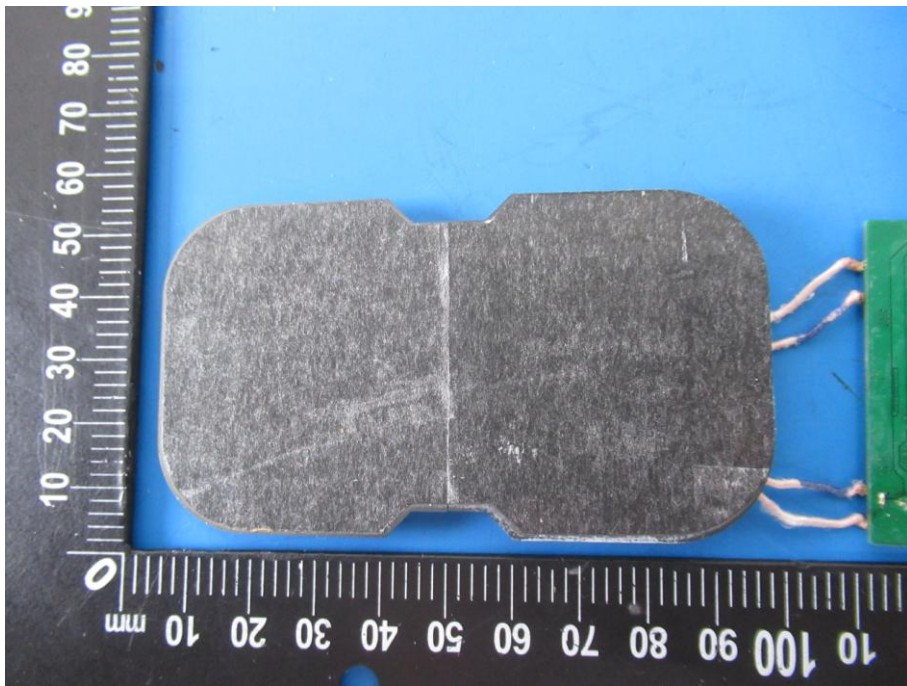
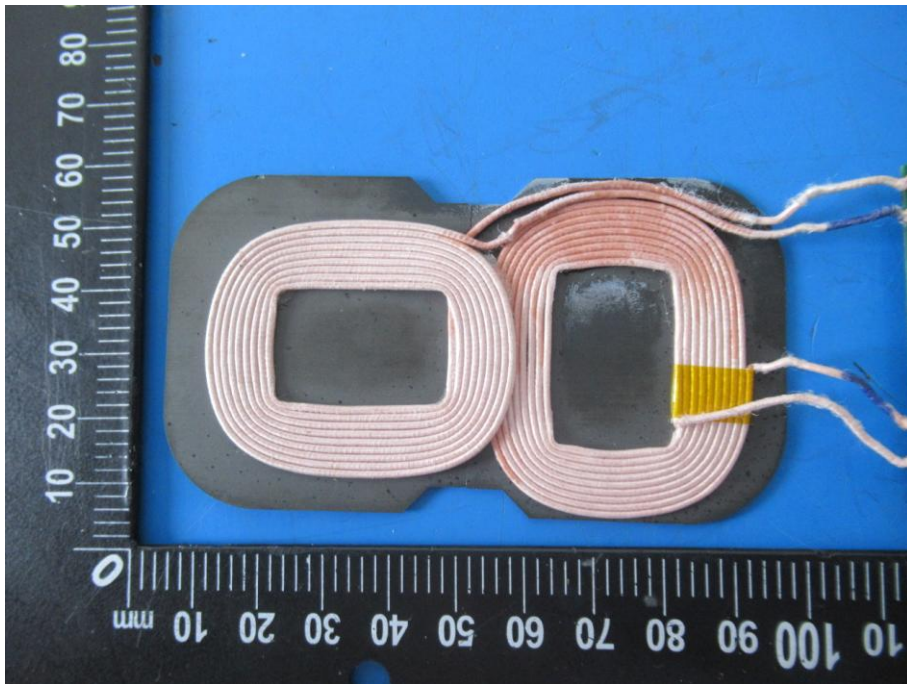












-----End-----