



## **Certification Exhibit**

**FCC ID: 2ADDKFLY4KW11  
IC: 12404A-FLY4KW01**

**FCC Rule Parts: 15.247, 15.407  
ISED Canada's Radio Standards Specification: RSS-247**

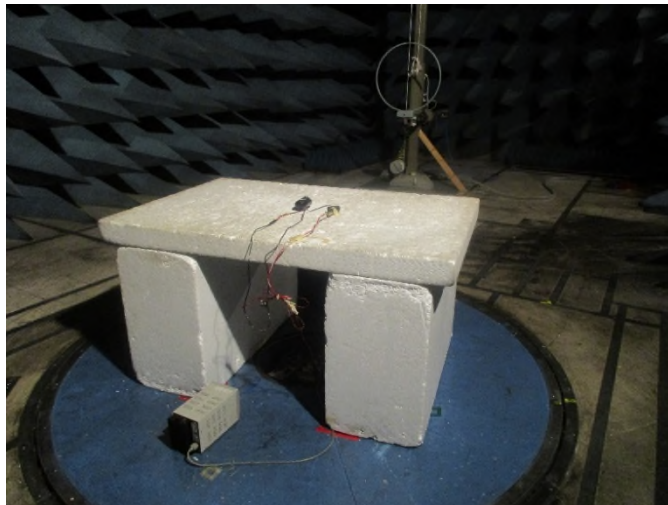
**TÜV SÜD Project Number: 72136175**

**Manufacturer: 360fly, Inc.  
Model: FLY4KW01 and FLY4KW11**

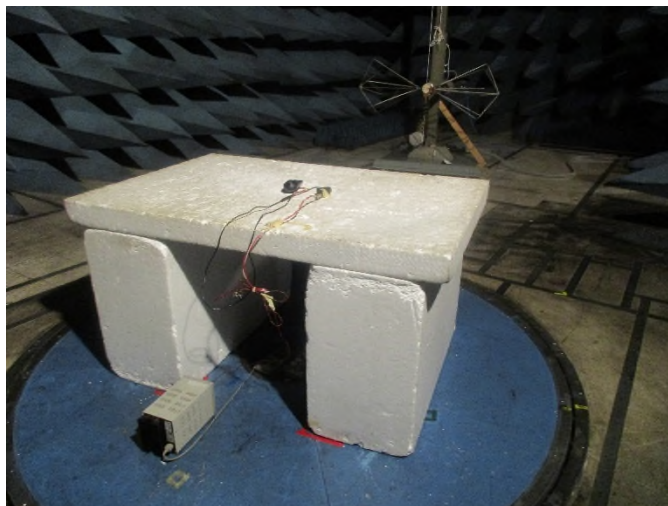
## **Test Setup Photos**



**Figure 1: Radiated Emissions – below 1 GHz – Front View – EUT Flat**



**Figure 2: Radiated Emissions – 9 kHz – 30 MHz – Rear View – EUT Flat**



**Figure 3: Radiated Emissions – 30 MHz – 200 MHz – Rear View – EUT Flat**



Figure 4: Radiated Emissions – 200 MHz – 1 GHz – Rear View – EUT Flat



Figure 5: Radiated Emissions – above 1 GHz – Front View – EUT Flat



Figure 6: Radiated Emissions – above 1 GHz – Rear View – EUT Flat

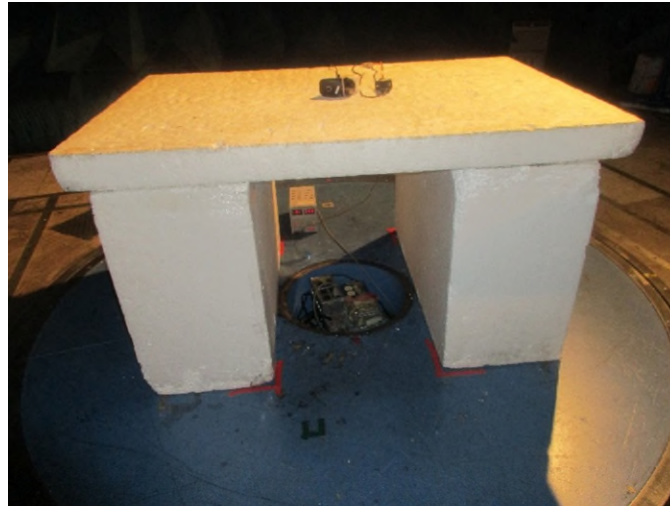


Figure 7: Radiated Emissions – below 1 GHz – Front View – EUT on Side

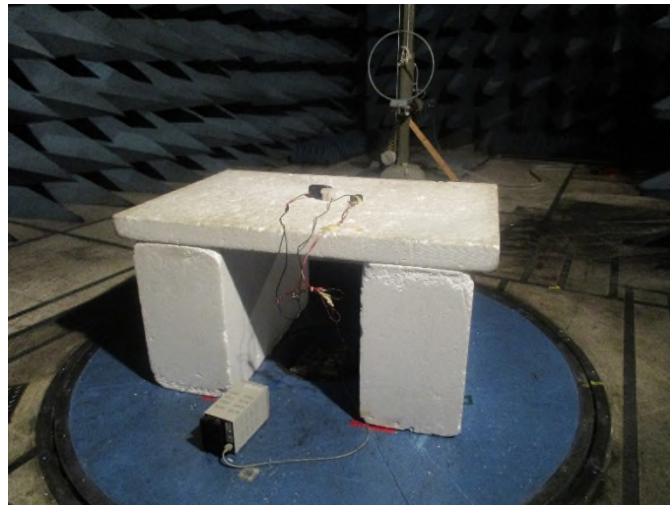


Figure 8: Radiated Emissions – 9 kHz – 30 MHz – Rear View – EUT on Side

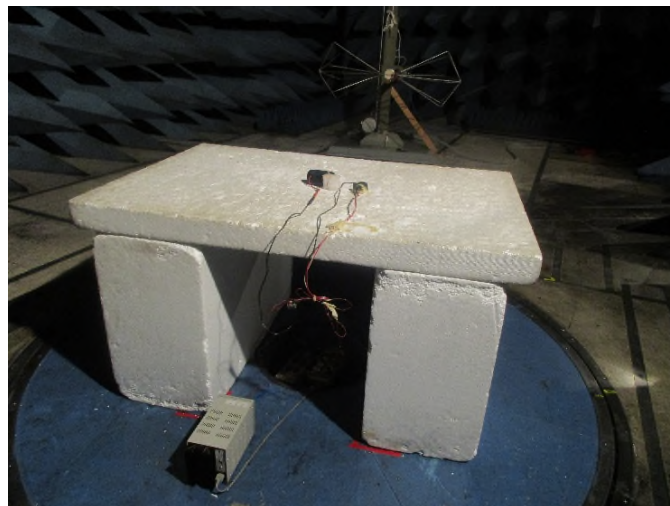
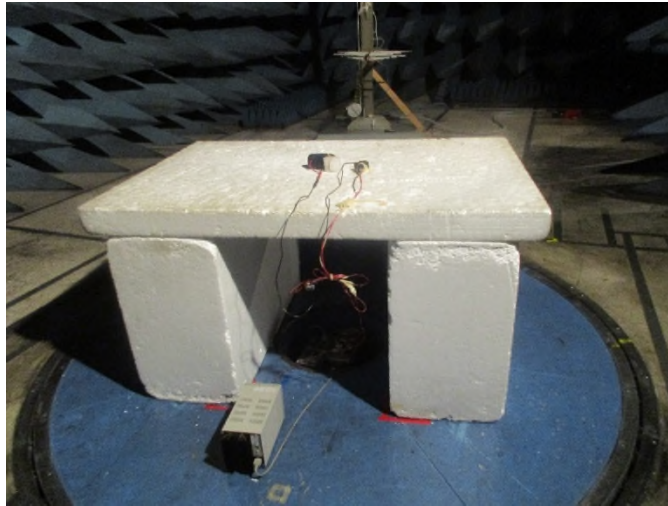
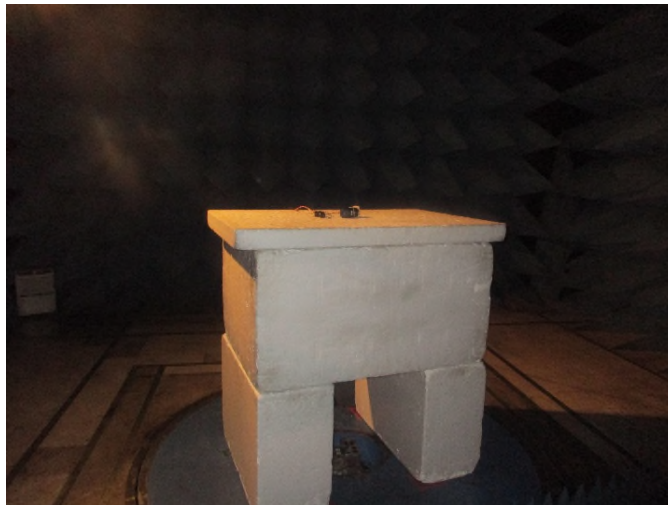


Figure 9: Radiated Emissions – 30 MHz – 200 MHz – Rear View – EUT on Side



**Figure 10: Radiated Emissions – 200 MHz – 1 GHz – Rear View – EUT on Side**



**Figure 11: Radiated Emissions – above 1 GHz – Front View – EUT on Side**



**Figure 12: Radiated Emissions – above 1 GHz – Rear View – EUT on Side**

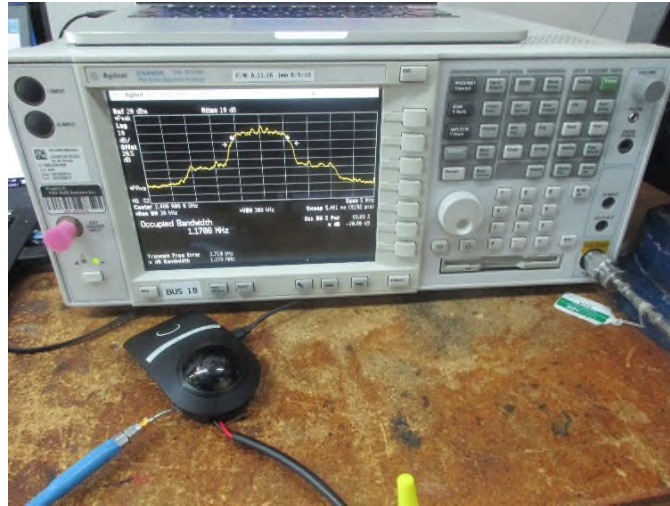


Figure 13: RF Conducted Test Setup



Figure 14: Conducted Emissions – Side View



Figure 15: Conducted Emissions – Front View