

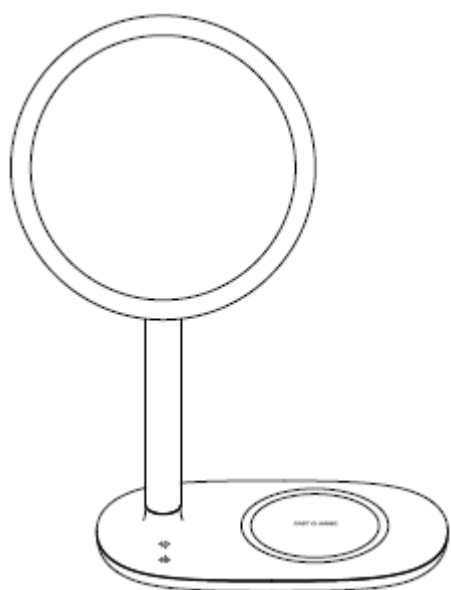
Fast Wireless Charging LED Mirror Desk Lamp

Operation Manual

Thank you for choosing our product.

Please read this manual and safety instruction before usage.

Please keep the manual for future reference.



Multi-function product.

Can be used as mirror lamp and desk lamp.

Fast Wireless charger.

Touch-control light.

Specifications:

Name: Fast Wireless Charging LED Mirror Desk Lamp

Item No.: H0065

Input: DC9V 2500mA

Wireless charger power: 10W

Mirror size: \varnothing 6.5" (165mm)

Material: ABS+PC+Glass

Mirror lamp power: 5W

Desk lamp power: 4W

Mirror lamp Color temperature: **5000K \pm 100K**

Desk lamp Color temperature: 3000K±100K

Mirror lamp CRI: 90

Desk lamp CRI: 85

Mirror lamp lux: 900 (max)

Desk lamp CRI: 690 (max)

Product size: 276x348x125 mm

Weight: 465 g

Operation frequency: 113.942 kHz to 175.641kHz

H-filed strength: -6.3 dB μ A/m@10m distance

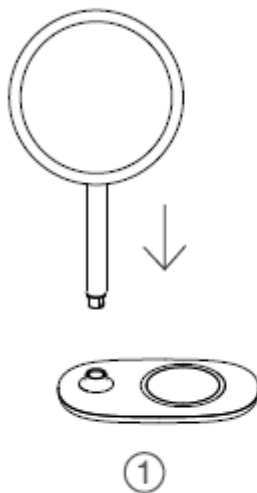
· The label is located on the bottom of the unit.

Components and Accessories:

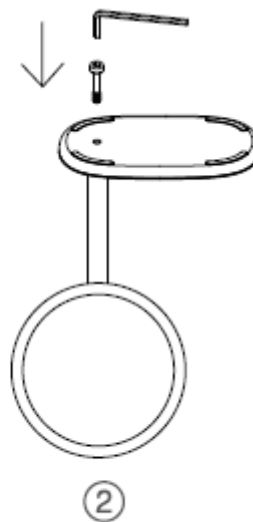
Mirror&desk lamp x1 Charger base x1 AC adapter x1 Hexagon socket screw x1 Hex x1 Allen key

How to fix

1. Put the mirror into the base.
2. Tighten with Hex screw driver.



Put the mirror into the base.



Tighten with Hex screw driver.

Functions:

Mirror lamp control/Brightness adjusting

Desk lamp control/Brightness adjusting

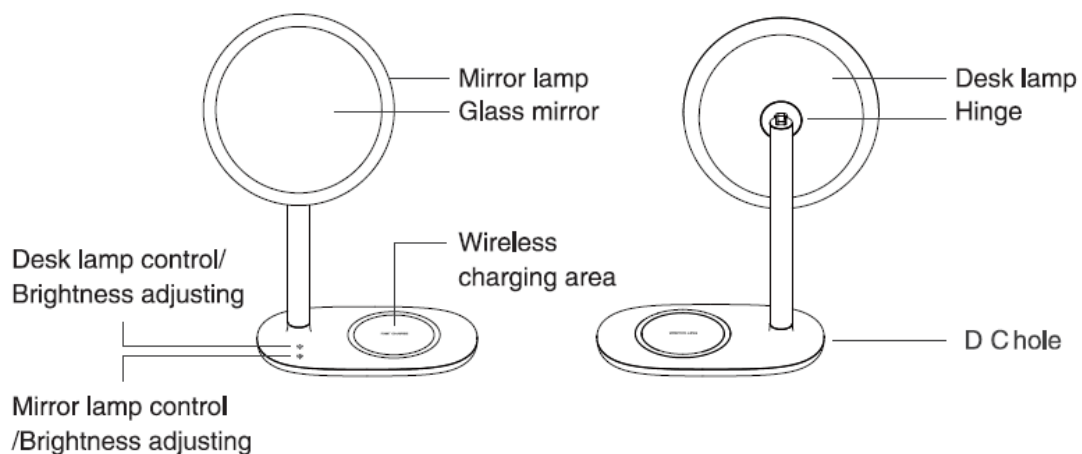
Glass mirror

Mirror lamp

Desk lamp

DC hole

Hinge



Mirror lamp

Short press the touch sensor area, you can turn on or turn off the light. Long press the touch sensor area, you can change the brightness.

Desk lamp

Adjust the mirror to a horizontal level.

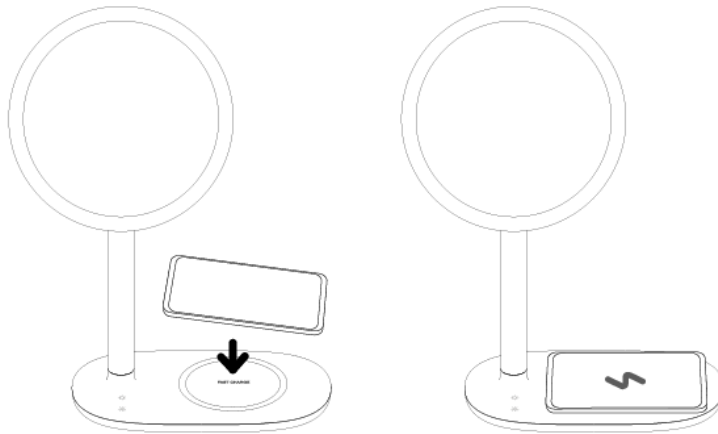
Short press the touch sensor area, you can turn on or turn off the light. Long press the touch sensor area, you can change the brightness.

Wireless charging

The wireless charging base supports Qi standard for wireless charging and could work as a wireless charging station for Qi standard electronic devices only.

Please remove your device when it is fully charged.

Please put your device onto the center of the silicone ring. If not, your device will not be charged or lower the charging efficiency.



Note:

This device complies with Part 15 of the FCC Rules. Operation is subject to the following two conditions: (1) this device may not cause harmful interference, and (2) this device must accept any interference received, including interference that may cause undesired operation.

Safety Instruction

WARNING! ELECTRIC SHOCK HAZARD: TO REDUCE THE RISK OF FIRE OR ELECTRIC SHOCK, DO NOT EXPOSE THIS PRODUCT TO WATER.

Please read and follow these instructions, beware all warnings, and keep this document for future reference.

- Set up your product in accordance with product manual, and place your product in a stable location.

- Do not use your product near water, including dripping or splashing sources (e.g. indoor fountain), or near object filled with liquids, such as flower vase or fish tanks.
- Do not use your product near heat sources (e.g. radiators, heat registers, stoves, open flame, such as lighted candles, or other heat-producing devices, such as audio amplifiers or TVs).
- Refer all servicing and repair to qualified service personnel. Servicing is required when your product does not operate normally, the power cord/plug has been damaged, the product has been exposed to water, rain, liquid or moisture, the product has been dropped, or an object has been inserted into a product port or vent.
- Warning: Do not change the LED light by yourself.
- Please use the product in specified voltage, or it may cause electric shock, damage or fire.
- Please do not disassemble and make any modifications to the product, this may lead to electric shock, fire or electric leakage.

Do not put metal objects onto the charging base while charging. Metal might get heated up which may cause damage to the product.

- Remove metal phonecase before charging with this product.
- Use the product in an environment within the temperature of $-10^{\circ}\text{C} \sim 35^{\circ}\text{C}$.
- Place the product in a proper place to avoid injury to children.
- This is not a toy, children under 3 are forbidden to use. Children from 3 to 8 should use this product under parents' supervision.

Cleaning:

Do not clean when the product is charging, clean with soft and dry cloth.

Do not use solvents, chemicals or sprays.

Do not allow liquids to spill or objects to drop into any openings.

Warning: Changes or modifications not expressly approved by the party responsible for compliance could void the user's authority to operate the equipment.

This equipment has been tested and found to comply with the limits for a Class B digital device, pursuant to Part 15 of the FCC Rules. These limits are designed to provide reasonable protection against harmful interference in a residential installation. This equipment generates, uses and can radiate radio frequency energy and, if not installed and used in accordance with the instructions, may cause harmful interference to radio communications. However, there is no guarantee that interference will not occur in a particular installation.

If this equipment does cause harmful interference to radio or television reception, which can be determined by turning the equipment off and on, the user is encouraged to try to correct the interference by one or more of the following measures:

- Reorient or relocate the receiving antenna.
- Increase the separation between the equipment and receiver.
- Connect the equipment into an outlet on a circuit different from that to which the receiver is connected.
- Consult the dealer or an experienced radio/TV technician for help.

This equipment complies with FCC radiation exposure limits set forth for an uncontrolled environment. This equipment should be installed and operated with minimum distance 20cm between the radiator and your body. This transmitter must not be co-located or operating in conjunction with any other antenna or transmitter.

Information to Consumers in Application of EU WEEE Directive 96/2002

This product is subject to European Union regulations that promote the re-use and recycling of used electrical and electronic equipment. This product required the extraction and use of natural resources and may contain hazardous substances. The symbol above, on the product or on its packaging, indicates that this product must not be disposed of with your other household waste. Instead, it is your responsibility to dispose of your waste equipment by handing it over to a designated collection point for the recycling of waste electrical and electronic equipment. The separate collection and recycling of your waste equipment at the time of disposal will help to conserve natural resources and ensure that it is recycled in a manner that protects human health and the environment. For more information about where you can drop of your waste equipment for recycling, please contact your local city office, your household waste disposal service, or the store from which you purchased the product.