

Quick Guide

For user' s safety, please read this manual before using the headset.

The following matters should be paid attention to when using headphones :

Please avoid under the high volume mode, because that will leads to hearing loss caused by noise.

If you are in bad condition of potentially dangerous, please stop using headphones, in order to ensure safety.

Users should be reasonable control volume and time when listening to the headphones.

The volume should not be too high, cause you can't hear the voice around the volume , if volume is too high that may appear tinnitus, please lower down the volume.

Don't recommend to listening music while driving.

With dry soft cloth to clean the headset! Should avoid the headphone into the water , that will cause headset damage.

If you feel obvious discomfort, stimulation, or other adverse reaction when use the headset, should immediately stop using it.

The headphones should not be stored or used in temperature below 15° C (5° F) or higher than 55° C (131° F), otherwise will reduce headphones or battery life.

Charging and Battery:

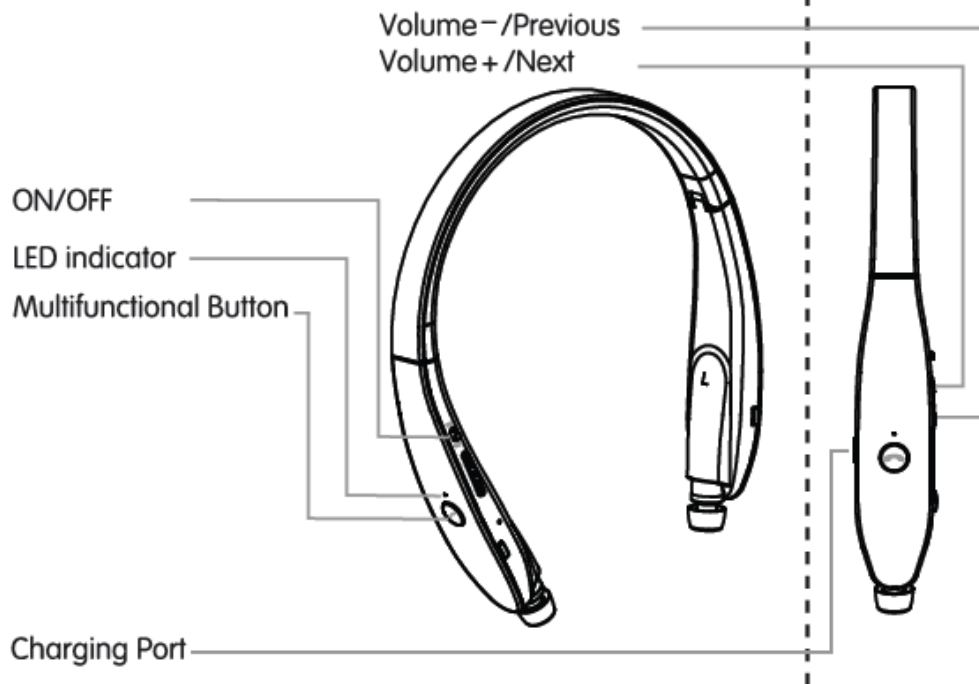
Before charging this headset with charging cable, please check whether the charging cable is the original.

Warning:

please charging the headsets with original charging cable ,it may damage the battery or the headset if you are using improperly charging cable.

This headset built-in rechargeable batteries, so do not attempt to remove the battery from the headset to avoid damage it.

1. Before charging, it's best to turn off the headset.
2. Insert the USB charging cable to earpiece jack, the other end of the USB port into the USB charger or any other devices to start charging.The headphones red light flashing means it is charging.



3. The headset need about 2 hours for fully charging,the red light goes off when fully charged.

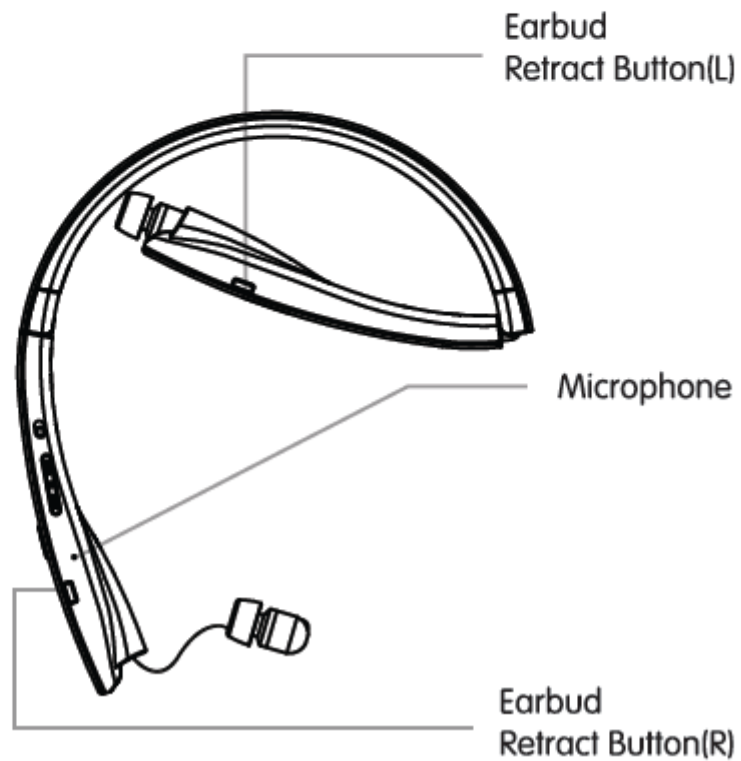
■ Package content :

- Headset 1pcs
- USB charging cable 1pcs
- Earbud 2pcs
- User Manual 1pcs

ON/OFF

1. Push "ON" , the headset will prompt for "Power ON" with vibration ; if red and bluelight flashing alternately means it' s ready for pairing with your device.

2. Switch to OFF to turn off the headset, it will prompt "Power OFF ".



Bluetooth connection steps:

1. Please keep your headset and mobile phone as close as you can, within 1 meter.
2. Switch to "ON", it will prompts "pairing" after 5 seconds, and then Red and blue lights flashing alternately when headset is on and ready for pairing.
3. Turn on "Bluetooth" in setting(your device) and find headset name
4. Click **MP33823** , Bluetooth headset gets connected with your mobile phone automatically. Some may require pass code which is 0000.

Pair the headset with 2 mobile phones

1. After successfully paired with a mobile phone, close the Bluetooth function of the mobile phone, and switch the button **MP33823** to OFF.
2. Same procedure to get the 2nd mobile phone paired with the Bluetooth headset.
3. Turn on the Bluetooth function of the 1st mobile phone; choose **MP33823** to finish the pairing status with the 2nd mobile phones.

Note:

- 1、 With you perviously paired device 's Bluetooth turned on and in range , turn on **MP33823**. The headset will automatically reconnect to the same Bluetooth device that connected last time. If you have a previously paired device that does not auto-reconnect , navigate to the Bluetooth settings menu on your device , turn on the Bluetooth feature , and select " **MP33823** " from your list of paired Bluetooth devices .

2、 Pairing time exceeds 3 minutes, SX-991 will automatically shut down ; in 3 minutes back to the effective distance can automatically return to the last connected device .

3、 P.S.: If connected with two mobile phones, only mobile phone 1 supports wireless music and you can start conversation for both mobile phones. Battery check up through iPhone.

Answer & End call / Incoming call vibration remind

Answer phone call :

When there is a incoming call, there will be a voice prompt, like “incoming call,134.....2578 (phone number will be broadcasted)” . Click MFB to answer, or just operate your mobile phone.

End Call :

Press the multifunction button to hang up calls, or by direct hang up your phone call.

Reject call :

When there is incoming call, headphone will broadcast “incoming call” with vibration, double click MFB to reject, or just reject it on your mobile phone

Last number redial :

Double click MFB.

Call Transfer :

Double click the volume “—” when calling to have call transfer between phone and headset.

Chinese/English Shift :

Long press the MFB and volume “+” simultaneously for 2 seconds.

EQ Shift :

Double click the volume “—” when playing music to have different sound effect (low bass boost, normal, high pitch boost). Default setting is low bass boost. Choose your favorite sound effect base on your habit and music style.

Power prompt :

Each time turning on SX-991, it will report headset battery power remaining, such as “battery full” , “battery level high” , “battery level medium” , “battery level low” , “recharge headset” .

Voice Dial :

Unlock the mobile phone and double click the volume “+” to launch the voice dial, and then just speak the people name you want to call. This function can work only if your mobile phone support it.

Play/Pause/Tracks

During music playing, single click MFB to pause music, and click again MFB to back to play.

During music playing, single click “+ / -” to change songs.

During the call or listening to music, user can long press “+” or “-” button to adjust the volume.

Mobile phone anti-lost indicator

When the headphone connected to smart phone, if the distance between device and headphone out of 10 m, headphone will prompt “Beyond the range of connections” . If coming back to the working distance within 3 min or after, the prompt will be off and reconnect automatically. If not coming back to the working distance in 10 min, headphone will be power off, please switch the button to the OFF and switch ON to the power on mode, headphone will back to work.

Restore Factory Settings

Long press the MFB while charging until the blue light flashing 3 times.

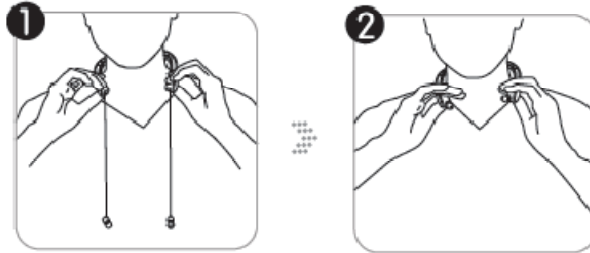
■ Technical Index

- Correpond With : Bluetooth V4.1
- Support : HSP . HFP . A2DP . AVRCP
- Transmitting Power : Class 2
- Working Distance : ≤10m
- Frequency Range : 2.402 GHz–2.480GHz
- Charging time : ≤3.5 hours
- Talk time : ≥18 hours
- Music Time: ≥16 hours
- standby time : ≥300 hours
- Weight : 67g

Tips:

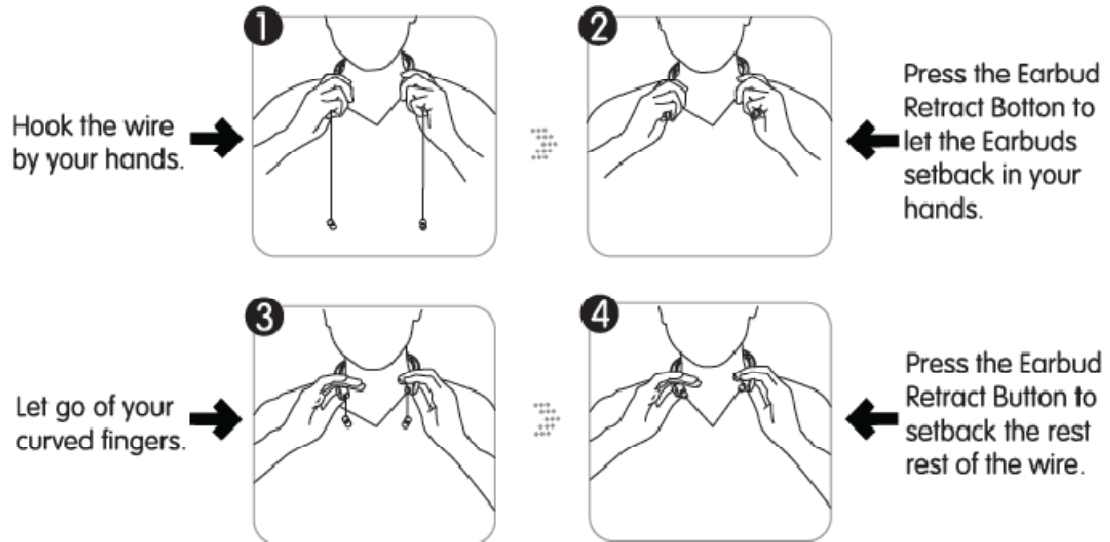
Wrong way of setting back the wire

Press the Earbud Retract Button directly. In this way, the earbuds will hit the headset aggressively.



Correct way of setting back the wire

In order to prolong the working life of the headset, please setback the wire slowly, and follow the steps shown below.



Federal Communications Commission (FCC) Statement

This device complies with part 15 of the FCC Rules. Operation is subject to the following two conditions: (1) This device may not cause harmful interference, and (2) this device must accept any interference received, including interference that may cause undesired operation.

Note: This equipment has been tested and found to comply with the limits for a Class B digital device, pursuant to part 15 of the FCC Rules. These limits are designed to provide reasonable protection against harmful interference in a residential installation. This equipment generates, uses and can radiate radio frequency energy and, if not installed and used in accordance with the instructions, may cause harmful interference to radio communications. However, there is no guarantee that interference will not occur in a particular installation. If this equipment does cause harmful interference to radio or television reception, which can be determined by turning the equipment off and on, the user is encouraged to try to correct the interference by one or more of the following measures:

- Reorient or relocate the receiving antenna.
- Increase the separation between the equipment and receiver.
- Connect the equipment into an outlet on a circuit different from that to which the receiver is connected.
- Consult the dealer or an experienced radio/TV technician for help.

Warning: Changes or modifications made to this device not expressly approved by Monoprice, Inc. may void the FCC authorization to operate this device.

Note: The manufacturer is not responsible for any radio or TV interference caused by unauthorized modifications to this equipment. Such modifications could void the user's authority to operate the equipment.