

Monoprice™  
**TRUE WIRELESS OPEN-EAR SPORTS EARBUDS**

P/N **44883**  
User Manual

## **SAFETY WARNINGS AND GUIDELINES**

Please read this entire manual before using this device, paying extra attention to these safety warnings and guidelines. Please keep this manual in a safe place for future reference.

- Do not touch these earbuds, their charging case, or their power cord with wet hands.
- Do not expose these earbuds and/or their charging case to excessively high temperatures. Do not place them in, on, or near heat sources, like a fireplace, stove, radiator, etc.
- Do not place these earbuds and/or their charging case in an area where they can be exposed to excessive amounts of dust, humidity, oil, smoke, or combustible vapors.
- Avoid exposing these earbuds and/or their charging case to rain and moisture or other liquids, and do not immerse them in water to prevent product damage or injury to you.
- Check these earbuds and/or their charging case and the power cord first for physical damage. Do not attempt in using them if there is physical damage.
- Before plugging in the charging case for charging, make sure that the power outlet has the same type and required power level.
- Using these earbuds will affect your ability to distinguish other sounds. Please use the device carefully when you are engaged in anything that needs your full attention and concentration.
- If you wear a pacemaker or other electronic medical equipment, please consult your doctor before using these earbuds.
- If these earbuds and/or their charging case are left unused for more than 3 months, make sure to charge them before using them again.
- These earbuds and/or their charging case are not toys—do not let children play with them unattended. Ingesting them, their packaging, or their peripherals may cause asphyxia.
- Please do not wear these earbuds if participating in water sports, like swimming and surfing.
- Please use these earbuds and/or their charging case within the temperature range of 0°C ~ 35°C, and store them within the temperature range of -20°C ~ 45°C. They will get damaged when the ambient temperature is too high or too low.
- Do not use chemical cleaners or solvents to clean these mounts. Use only a soft cloth that's slightly moistened with warm water.
- These earbuds and/or their charging case device have no user-serviceable parts. Do not attempt to open, service, or modify them.

# Table of Contents

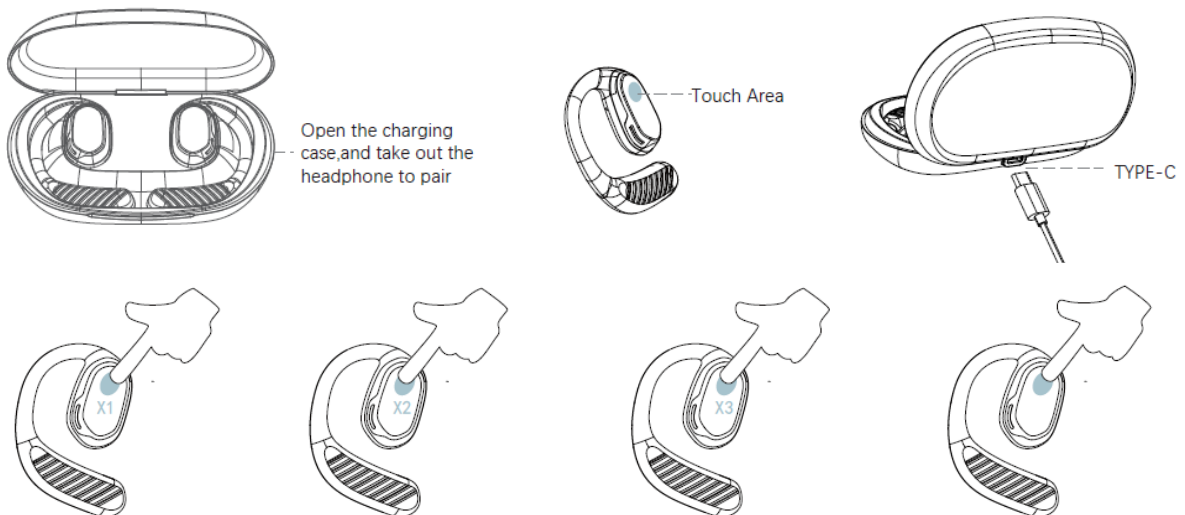
SAFETY WARNINGS AND GUIDELINES .....	2
PACKAGE CONTENTS .....	3
PRODUCT DESCRIPTION .....	3
HOW TO WEAR .....	4
TECHNICAL SPECIFICATIONS .....	5
CUSTOMER SERVICE .....	6
TECHNICAL SUPPORT .....	6
REGULATORY COMPLIANCE .....	6
NOTICE FOR FCC .....	6
RF WARNING STATEMENT FOR FCC .....	7
NOTICE FOR ISED CANADA .....	7
DISPOSAL AND RECYCLING INFORMATION .....	7

## PACKAGE CONTENTS

Take an inventory of the package contents to make sure you have all the items listed below. Please contact Monoprice Customer Service for a replacement if anything is missing or damaged.

- 1x Pair (Left and Right) of Wireless Earbuds
- 1x Portable Charging Case
- 1x Type-C Charging Cable
- 1x Quick Setup Guide

## PRODUCT DESCRIPTION



## A. MUSIC MODE

Single touch	Play	Pause
Double touch (left)	Play the previous track	
Double touch (right)	Play the next track	

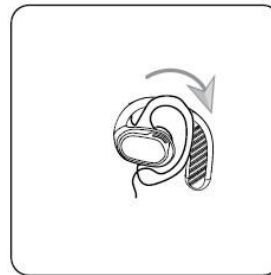
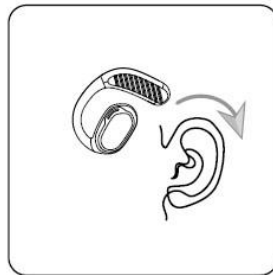
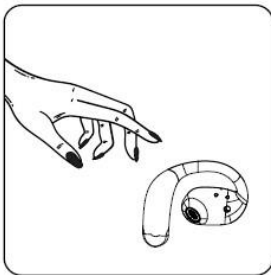
## B. TALK MODE

Single touch	Answer	Hang up
Two quick touches	Reject a call	
Touch three times	Wake up the voice assistant	

## B. MUSIC / TALK MODE

Long press (left)	Volume -
Long press (right)	Volume +
Reset device	Long press for 10 s with the earbuds turned off

## HOW TO WEAR



1. Take out the earbuds from their charging case.
2. Wear them along the back of your ears.
3. Gently adjust the earbuds to a comfortable position.
4. Pair with your mobile device and start listening to music or make/take a call.

## TECHNICAL SPECIFICATIONS

P/N	44883
Product Type	Open-Ear Wireless Stereo
Bluetooth Version	V5.3
Charging Interface	Type-C
Charging Time	$\leq 2$ h
Transmission Distance	$\geq 10$ m
Frequency Range	2402 MHz – 2480 MHz
Power	0.6 mW

## **CUSTOMER SERVICE**

The Monoprice Customer Service department is dedicated to ensuring that your ordering, purchasing, and delivery experience is second to none. If you have any problems with your order, please give us an opportunity to make it right. You can contact a Monoprice Customer Service representative through the Live Chat link on our website [www.monoprice.com](http://www.monoprice.com) or via email at [support@monoprice.com](mailto:support@monoprice.com). Check the website for support times and links.

## **TECHNICAL SUPPORT**

Monoprice™ is pleased to provide free, live, online technical support to assist you with any questions you may have about installation, setup, troubleshooting, or product recommendations. If you ever need assistance with your new product, please come online to talk to one of our friendly and knowledgeable Tech Support Associates. Technical support is available through the online chat button on our website [www.monoprice.com](http://www.monoprice.com) or through email by sending a message to [tech@monoprice.com](mailto:tech@monoprice.com). Check the website for support times and links.

To download the latest drivers, firmware, manuals, etc., go to [www.monoprice.com](http://www.monoprice.com) and type **44883** into the search bar. If available, support files are linked at the bottom of the product page.

## **REGULATORY COMPLIANCE**

### **Notice for FCC**



This device complies with Part 15 of the FCC rules. Operation is subject to the following two conditions: (1) this device may not cause harmful interference, and (2) this device must accept any interference received, including interference that may cause undesired operation.

Modifying the equipment without Monoprice's authorization may result in the equipment no longer complying with FCC requirements for Class B digital devices. In that event, your right to use the equipment may be limited by FCC regulations, and you may be required to correct any interference to radio or television communications at your own expense.

This equipment has been tested and found to comply with the limits for a Class B digital device, pursuant to Part 15 of the FCC Rules. These limits are designed to provide reasonable protection against harmful interference in a residential installation. This equipment generates, uses, and can radiate radio frequency energy and, if not installed and used in accordance with the instructions, may cause harmful interference to radio communications. However, there is no guarantee that interference will not occur in a particular installation. If this equipment does cause harmful interference to radio or television reception, which can

be determined by turning the equipment off and on, the user is encouraged to try to correct the interference by one or more of the following measures:

- Reorient or relocate the receiving antenna.
- Increase the separation between the equipment and the receiver.
- Connect the equipment to an outlet on a circuit different from that to which the receiver is connected.
- Consult the dealer or an experienced radio/TV technician for help.

## **RF Warning Statement for FCC**

The device has been evaluated to meet general RF exposure requirements. The device can be used in portable exposure conditions without restriction.

## **Notice for ISED Canada**

This Class B digital apparatus complies with Canadian ICES-003.

*Cet appareil numérique de la classe B est conforme à la norme NMB-003 du Canada.*

This device complies with Industry Canada license-exempt RSS standard(s). Operation is subject to the following two conditions: (1) this device may not cause interference, and (2) this device must accept any interference, including interference that may cause undesired operation of the device.

Le présent appareil est conforme aux CNR d'Industrie Canada applicables aux appareils radio exempts de licence. L'exploitation est autorisée aux deux conditions suivantes :

(1) l'appareil ne doit pas produire de brouillage, et  
(2) l'utilisateur de l'appareil doit accepter tout brouillage radioélectrique subi, même si le brouillage est susceptible d'en compromettre le fonctionnement."

L'appareil a été évalué pour répondre aux exigences générales d'exposition aux RF. L'appareil peut être utilisé sans restriction dans des conditions d'exposition portables.



## **Disposal and Recycling Information**

The symbol indicates that this product should be disposed of separately from regular household waste streams. It is your responsibility to dispose of this and other electrical and electronic products via designated collection facilities appointed by the government or local authorities. Correct disposal and recycling will help prevent potential negative consequences to the environment and human health. For more detailed information about the disposal of your unwanted product, please contact your local authorities, waste disposal service, or the shop where you purchased the product.

*Monoprice™ and all Monoprice logos are trademarks of Monoprice Inc.*

*The Bluetooth® word mark and logos are registered trademarks of Bluetooth SIG, Inc.*

*USB Type-C® and USB-C® are registered trademarks of USB Implementers Forum.*



TECHNOLOGY AT PRICES THAT MAKE SENSE

[www.monoprice.com](http://www.monoprice.com)

Need Help? We're here for you!

Contact us: [www.monoprice.com/contactus](http://www.monoprice.com/contactus)

Product pictures are for reference only.

Specifications described herein are subject to change without prior notification.

Monoprice™ and all Monoprice logos are trademarks of Monoprice Inc.

Copyright © 2023 Monoprice, Inc. All rights reserved.

Monoprice, Inc.

1 Pointe Drive, Suite 400

Brea, CA 92821 – USA

[www.monoprice.com](http://www.monoprice.com)