

Acknowledgment

Client's name: _____

Customer part number: _____

Our model: _____ RC-G25-7.6UH-3000GS-8MM

Sample delivery date: _____ 2023 年 6 月 6 日

Supplier: _____

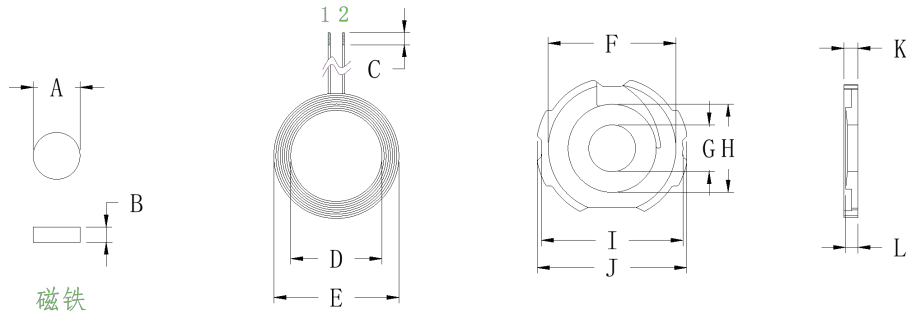
Draw	Review	Approve
Wang Lizhi	Deng Xianggui	Lu Rusheng

Client acknowledges that:

Qualified	Unqualified	Admit
Remark		

	Customer part number	Model	Version	Date
		RC-G25-7.6UH-3000GS-8MM	A0	2023.6.6

一、Plane structure: Unit :MM



A	7.65±0.05
B	2.0±0.05
C	2±1
D	14±0.2
E	20.7±0.3
F	21±0.2
G	7.7±0.05
H	13.5±0.2
I	23.5±0.3
J	25±0.2
K	2.5±0.1
L	2.25±0.1 中柱高度
M	8±1

二、Product parameter:

Foot position	Wire diameter	Number of turns	Remark
1 - 2	0.08*24P	14	Hot air stranded wire

三、Technical requirement:

1. Fix the end of the wire to prevent loose and broken wires
2. According to customer requirements, the long thread is cut and tinned, and the tinning depth is 2±1M
4. The soft magnetic sheet used is with round holes, without damage
5. Additional process (according to customer requirements) : Install 7.65x2.0mm magnet in the middle of the finished product round hole and in the finished product

四、Electrical parameter:

1. Inductance value, Q value:

$$\text{PIN } 1 - 2 = 7.6\mu\text{H} \pm 0.2\mu\text{H}$$

$$\text{Q value} \geq 35$$

The above inductance values are based on Quanhua 1062A instrument

五、Bill of materials:

serial number	Name	Material	Supplier	Remark
1	Hot stranding wire	0.08X24P	Vihan	
2	Magnetic sheet	G25 软基材	Tiantong	
3	tin	高温环保	Thousand Islands	
4	White glue	BY882	baoyue	
5	Strong magnetic	7.65*2(强度大于3000GS)	liansheng	附加工序,按客户要求
6	Double adhesive	513-13*13mm	honghui	方形