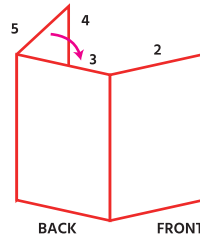


# 100\*80mm



- Reorient or relocate the receiving antenna.
- Increase the separation between the equipment and receiver.
- Connect the equipment into an outlet on a circuit different from that to which the receiver is connected.
- Consult the dealer or an experienced radio/TV technician for help.

#### Radio Notice for FCC Caution

This FCC Part 15 radio device operates on a non-interference basis with other devices operating at this frequency. Any changes or modification to said product not expressly approved by Monoprice, including the use of non-approved antennas, could void the user's authority to operate this device. This device complies with Part 15 of the FCC Rules. Operation is subject to the following two conditions: (1) this device may not cause harmful interference, and (2) this device must accept any interference received, including interference that may cause undesired operation.

#### Radio Notice for ISED Canada:

This device complies with ISED Canada license-exempt RSS standard(s). Operation is subject to the following two conditions: (1) this device may not cause harmful interference, and (2) this device must accept any interference received, including interference that may cause undesired operation.

Le présent appareil est conforme aux CNR d'ISDE Canada applicables aux appareils radio exempts de licence. L'exploitation est autorisée aux deux conditions suivantes: (1) l'appareil ne doit pas produire de brouillage, et (2) l'utilisateur de l'appareil doit accepter tout brouillage radioélectrique subi, même si le brouillage est susceptible d'en compromettre le fonctionnement.

#### Radio Frequency Exposure

This device meets the ISED Canada requirements for exposure to radio waves and is designed and manufactured not to exceed the emission limits for exposure to radiofrequency (RF) energy. To comply with Canada RF exposure compliance requirements, this device must not be co-located or operating in conjunction with any other antenna or transmitter.

#### Notice for ISED Canada: CAN ICES-3 (B)/NMB-3(B)

The device has been evaluated to meet general RF exposure requirements. The device can be used in portable exposure conditions without restriction.

Keyboard HVIN: 44521  
Dongle HVIN: 44521D  
Mouse HVIN: 44521M



5

**M MONOPRICE™**

[www.monoprice.com](http://www.monoprice.com)

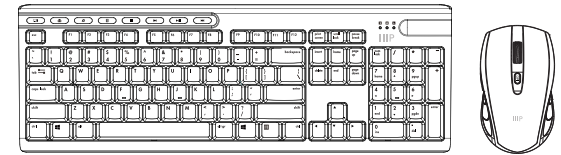
#### Need Help? We're here for you!

Contact us: [www.monoprice.com/contactus](http://www.monoprice.com/contactus)

Product pictures are for reference only. Specifications described herein are subject to change without prior notification. Monoprice™ and all Monoprice logos are trademarks of Monoprice Inc.  
Copyright © 2023 Monoprice, Inc. All rights reserved.

Monoprice, Inc.  
1 Pointe Drive, Suite 400  
Brea, CA 92821 - USA  
[www.monoprice.com](http://www.monoprice.com)  
Tel. 877.271.2592

**M MONOPRICE™**



Monoprice™  
**Wireless Keyboard and Mouse Combo**

P/N 44521  
**User Manual**

BACK

FRONT

## Features

### Wireless Keyboard

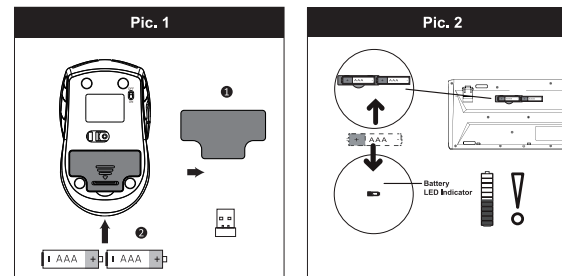
Connectivity: Wireless 2.4GHz  
Number of Keys: 104  
Independent Multimedia Keys: 8  
Silent Switches  
Lifespan: 10 Million Clicks  
Working Distance: Up to 10m (open space)  
Energy-Saving Technology  
Compatible with Windows XP, 7, 8, 10

### Wireless Mouse

Resolution: 1000/1200/1600 DPI  
Number of Buttons: 4  
Energy-Saving Technology  
Compatible with Windows XP, 7, 8, 10  
Included Accessories: One Receiver

2

## Battery Installation



Pic. 1: Install 2x AAA Batteries (not included) into Wireless Mouse.

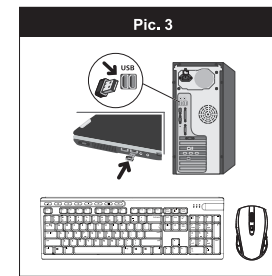
Pic. 2: Install 2x AAA Batteries (not included) into Wireless Keyboard.

### CAUTION

Risk of explosion if the battery is replaced by an incorrect type  
Disposal of a battery into fire or a hot oven, or mechanically crushing or cutting of a battery can result in an explosion  
Leaving a battery in an extremely high temperature surrounding environment that can result in an explosion or the leakage of flammable liquid or gas  
A battery subjected to extremely low air pressure that may result in an explosion or the leakage of flammable liquid or gas.

3

## Connecting to Computer



Pic. 3: Plug the Wireless Receiver to an open USB Type A port on your desktop or laptop computer. The connection should happen automatically after a few seconds.

### REGULATORY COMPLIANCE Notice for FCC



This device complies with Part 15 of the FCC rules. Operation is subject to the following two conditions: (1) this device may not cause harmful interference, and (2) this device must accept any interference received, including interference that may cause undesired operation. Modifying the equipment without Monoprice's authorization may result in the equipment no longer complying with FCC requirements for Class B digital devices. In that event, your right to use the equipment may be limited by FCC regulations, and you may be required to correct any interference to radio or television communications at your own expense. This equipment has been tested and found to comply with the limits for a Class B digital device, pursuant to Part 15 of the FCC Rules. These limits are designed to provide reasonable protection against harmful interference in a residential installation. This equipment generates, uses and can radiate radio frequency energy and, if not installed and used in accordance with the instructions, may cause harmful interference to radio communications. However, there is no guarantee that interference will not occur in a particular installation. If this equipment does cause harmful interference to radio or television reception, which can be determined by turning the equipment off and on, the user is encouraged to try to correct the interference by one or more of the following measures:

4