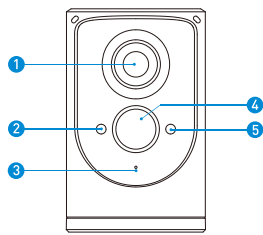




Features



- 1. Wide-angle Lens
- 2. Indicator Lights
- 3. Microphone
- 4. Motion Sensor
- 5. Light Sensor



Red Indicator Light

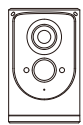
Flashing red
Wi-Fi connection



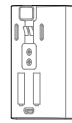
Blue Indicator Light

Blue light
Live view
Flashing blue
Motion detection

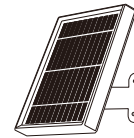
In the box



Paso
Battery Camera



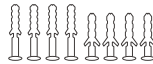
Rechargeable
6000mAh
Battery Pack



Solar Panel +
Mounting arm



Stand



Anchor Packs



Screw Packs



User Manual

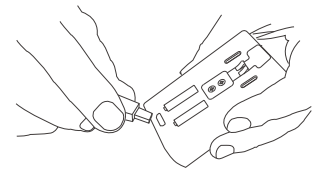
Charge the battery

Charge the included battery.

Fully charge the battery by plugging it into a USB port using a Micro USB cable.

It takes about 6–8 hours for the battery to fully charge. When only one blue LED is lit, that indicates the battery is fully charged.

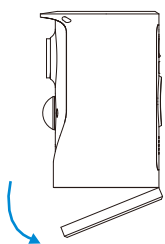
● ● = Charging ● = Fully Charged



Set up your Paso

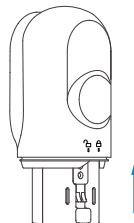
1. Remove the battery cover.

Push the battery cover backward to unlock, and then remove it from your Paso.



2. Insert the battery.

Insert the fully charged battery into the bottom of your Paso until it clicks into place.



3. Set up your device in the Aiwit app.

Before You Start

1. Download and install Aiwit App. Scan the QR code below or search for Aiwit on the Apple App Store or Google Play. Download and install the app.
2. Create an Aiwit account.



Aiwit



iOS / Android
App Download

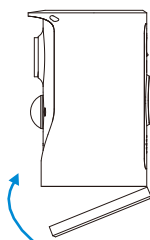
Set up your Paso in the Aiwit app.

To pair your Paso, follow the steps below and in-app instructions.

1. Open Aiwit App and log in to your account.
2. To add your camera, select the + icon.
3. **Select Battery Camera 2.**
4. Press and hold the Setup Button until the red light is flashing.
5. Enter your 2.4GHz Wi-Fi network and the Wi-Fi password, then tap Next (5GHz is not supported).
6. Use your Paso camera to scan the QR Code shown on the app, then select Confirm once the Wi-Fi setup has finished.

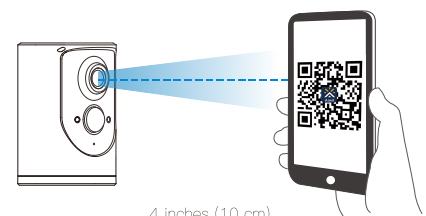
4. Attach the battery cover.

Find the Open lock symbol located behind your Paso. Align the symbol with the line on the battery cover. Push the cover on and turn clockwise until it locks.



5. Give it a try!

After setup, tap the Live View in the Aiwit app to see live video from your Paso.

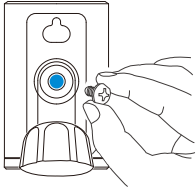


4 inches (10 cm)

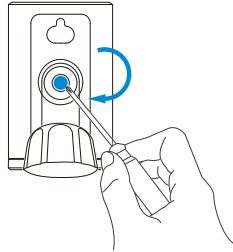


Install the Paso on a wall:

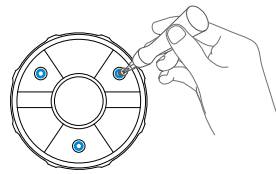
1. Attach the stand to the camera.



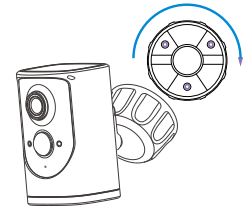
2. Secure tightly with the stand screw.



3. Mark drill holes and use a bit to drill holes in your wall or ceiling. Insert anchors and secure your Paso with mounting screws.



4. Screw the device with bracket to the base.



Need help setting up?

If you experience some issues during the app setup, try these steps:

Check your WiFi password.

The most common issue during setup is incorrect Wi-Fi passwords. Passwords are case sensitive. Please double-check your password.

Reboot the router/modem.

If you have entered the correct password, but still experiencing issues, try unplugging the power to your router/modem. Wait for 30 seconds, then plug the power back and turn it back on. Proceed to setup again in the Aiwit app.

Frequently asked questions

How long do my videos stay in my account?

Your videos are stored in the Free Cloud for up to 7 days.

How to RESET network settings

Press and hold the Setup Button until red light is flashing. Follow the in-app instructions to finish your Wi-Fi setup.

How to share the device with my family

Open the Aiwit app. From the home page, tap the Share icon. Tap Share via Email or Share via QR Code. You can share the device with up to 8 users.

Share via Email:

The new user has to download the Aiwit app and create an account with the same email address which the device owner has shared with. Log in to the account and you'll see the shared device.

Share via QR Code:

1. Open the Aiwit App on a new user's smartphone.
2. From the home page, tap +.
3. Tap QR Code Sharing, then scan the QR code the device owner generated before.
4. You will see Share successful, then tap Confirm.

How many users can view the video at the same time?

Up to 3 users may view the video feed, but only 1 user can use the direct intercom. Both iOS and Android are compatible.

Is 5GHz Wi-Fi supported?

No. Only 2.4GHz Wi-Fi is supported.

Why is my Wi-Fi signal poor on my device?

Your device may be too far away from your wireless router or you may have some obstructions in between that reduce signal strength. You might try repositioning your router or getting a signal extender/repeater for your wireless router.

How to adjust Motion Detection Sensitivity

From the home page, tap Motion Detection icon.

Motion Detection Sensitivity

- Fast: Records and notifies you about every motion. Shortest battery life.
- Medium: Records and notifies you about motion less often. Standard battery life.
- Slow: Records and notifies you about motion even less often. Maximum battery life.

How to enable Notifications on my phone

To do this, you need to give permission for the Aiwit app to access to your microphone and enable notifications. Follow these steps to enable notifications.

1. Open Settings. Go to Aiwit app permissions and select Notifications.
2. Make sure all switches are on.



Install your Solar Panel

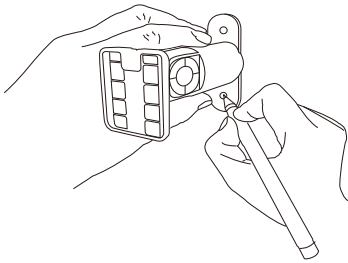
Please complete the battery camera setup in the App prior to installing the solar panel.

1. Choose the installation location

Pick an unshaded spot for best sun exposure. The solar panel should be installed where it will receive several hours of direct sun daily.

2. Mark your spot

Place the solar panel mounting arm mark where you plan to install, and mark the screw hole positions lightly with a pencil.



3. Drill the holes

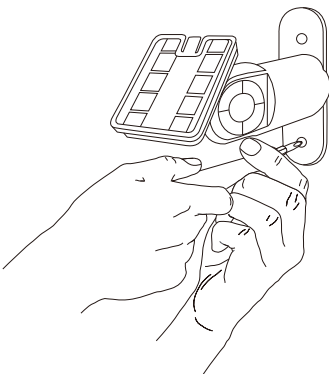
Optional: You may opt to use a drill bit to drill the holes where you have previously marked.

For mounting surfaces that are brick, concrete, or stucco, please use the plastic anchors. You may need to use a hammer to install the anchors.

- For mounting surfaces that are wood or vinyl, you can omit the anchors, and use the screws directly.

4. Install the mounting arm

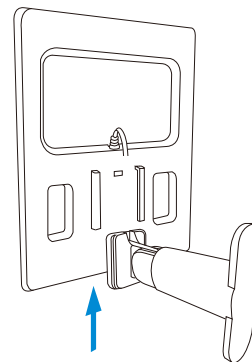
Use a screwdriver to secure the mounting arm to the wall, tighten securely.



5. Attach the solar panel

Attach the solar panel onto the mounting arm, ensure that it is installed correctly.

Note: You may adjust the angle of the solar panel for better sun coverage. Simply loosen the adjustment screw on the mounting arm, adjust to desired angle, and re-tighten the screw.



6. Plug the cable

Lastly, plug the solar panel charging cable into the Asrtro. Let's start charging!

FCC Warning:

This equipment has been tested and found to comply with the limits for a Class B digital device, pursuant to part 15 of the FCC Rules. These limits are designed to provide reasonable protection against harmful interference in a residential installation. This equipment generates, uses and can radiate radio frequency energy and, if not installed and used in accordance with the instructions, may cause harmful interference to radio communications. However, there is no guarantee that interference will not occur in a particular installation. If this equipment does cause harmful interference to radio or television reception, which can be determined by turning the equipment off and on, the user is encouraged to try to correct the interference by one or more of the following measures:

- Reorient or relocate the receiving antenna.
- Increase the separation between the equipment and receiver.
- Connect the equipment into an outlet on a circuit different from that to which the receiver is connected.
- Consult the dealer or an experienced radio/TV technician for help.

Caution: Any changes or modifications to this device not explicitly approved by manufacturer could void your authority to operate this equipment.

This device complies with part 15 of the FCC Rules. Operation is subject to the following two conditions:

(1) This device may not cause harmful interference, and (2) this device must accept any interference received, including interference that may cause undesired operation.

This equipment complies with FCC radiation exposure limits set forth for an uncontrolled environment. This equipment should be installed and operated with minimum distance 20cm between the radiator and your body.