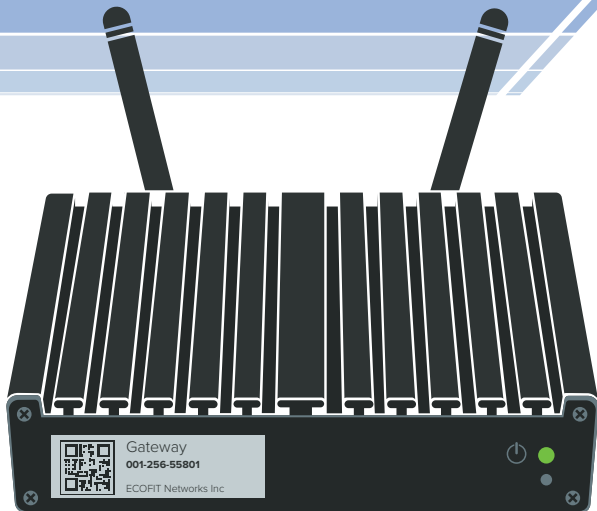


# ECOFIT Gateway

Model: GTY110

Rev: 1.0



Warranty and Quick Start Guide

Contents.....	1
Networking Considerations .....	2
Gateway Installation.....	3
Gateway Mounting.....	4
User Notice .....	6
Warranty Statement .....	7
Certification Information.....	8

### DHCP

The ECOFIT Gateway is designed to connect over a DHCP connection.

If the facility implements network security, supply the following information to their IT personnel:

UPDATE CHANNEL	HTTPS Port 443, MAC Authorized, Outgoing
RESTART CHANNEL	TCP Port 8001, Outgoing
SESSION SUBMIT CHANNEL	HTTPS Port 443, REST, Basic Authorization, Outgoing

### STATIC IP

If required, a static IP address can be set on the Gateway.

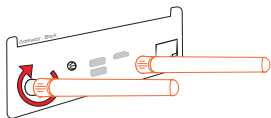
This is done by logging into the Gateway and manually setting the IP address in the Network Settings.

Full step by step instructions can be found on the **ECOFIT Help Center**.

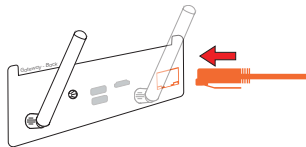
## The Gateway package contains the following:

- |                               |                          |
|-------------------------------|--------------------------|
| 1 - Gateway PC                | 1 - Gateway Power Supply |
| 1 - Gateway Wall Mounting Kit | 1 - Power Cord           |
| 1 - Ethernet Cable            | 2 - Antennas             |

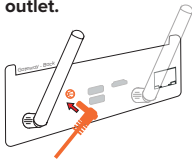
### 1. Connect both antennas to Gateway.



### 2. Connect active ethernet port.



### 3. Connect to power supply to active outlet.



### 4. Gateway will automatically power up.

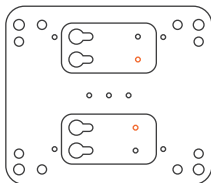


Visit the [ECOFIT Help Center](#) for configuration information.

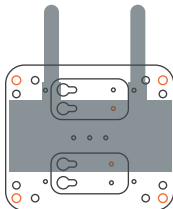
### To Wall Mount the System:



**1. Locate the 2 screw holes reserved for mounting on the bottom of the Gateway PC**



**2. Place the mounting panel on the Gateway. Fasten compatible screws to secure the Gateway.**

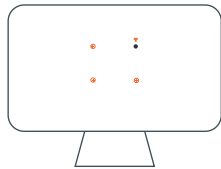


**3. Screw the mounting pad to the wall using the above marked screw holes. Ensure the screws are fixed securely to the wall.**

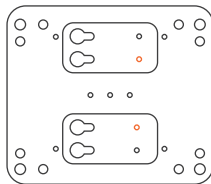
To VESA Mount the System:



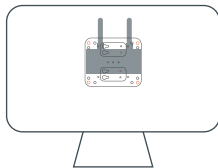
**1. Locate the 2 screw holes reserved for mounting on the bottom of the Gateway PC**



**3. Remove the reserved screws for VESA mount on the back cover on the monitor/TV.**



**2. Place the mounting panel on the Gateway. Fasten compatible screws to secure the Gateway.**



**4. Screw the mounting pad to the back of the monitor/TV. Ensure the screws are fixed securely.**



## Environmental Safety Instruction

Avoid dust, humidity and temperature extremes.

Do not place the product in any area where it may become wet.

0-40 Centigrade is the optimal operating temperature.

COPYRIGHT OF THIS MANUAL BELONGS TO THE MANUFACTURER. NO PART OF THIS MANUAL INCLUDING THE PRODUCTS AND SOFTWARE DESCRIBED IN IT MAY BE REPRODUCED, TRANSMITTED OR TRANSLATED INTO ANY LANGUAGE IN ANY FORM OR BY ANY MEANS WITHOUT WRITTEN PERMISSION OF THE MANUFACTURER.

THIS MANUAL CONTAINS BASIC INFORMATION REQUIRED TO INSTALL THE GATEWAY PRODUCT. WE ASSURE THAT THIS MANUAL MEETS THE USER'S REQUIREMENT BUT MAY BE CHANGED OR CORRECTED AT ANY TIME WITHOUT NOTICE. MANUFACTURER PROVIDES THIS MANUAL "AS IS" WITHOUT A WARRANTY OF ANY KIND, AND WILL NOT BE LIABLE FOR ANY INDIRECT, SPECIAL, INCIDENTAL OR CONSEQUENTIAL DAMAGES (INCLUDING DAMAGES FOR LOSS OF PROFIT, LOSS OF BUSINESS, LOSS OF DATA, INTERRUPTION OF BUSINESS ETC.).

PRODUCTS AND CORPORATE NAMES APPEARING IN THIS MANUAL MAY OR MAY NOT BE REGISTERED TRADEMARKS OR COPYRIGHTS OF THEIR RESPECTIVE COMPANIES, AND THEY ARE USED ONLY FOR IDENTIFICATION OR EXPLANATION AND TO THE OWNER'S BENEFIT, WITHOUT INTENT TO INFRINGE.

## Manual Revision Information

Revision	Revision History	Date
1.0	First Edition	August 8, 2016

# Warranty Statement

## Reputable Warranty

ECOFIT strives to provide the highest quality products to our customers. In keeping with that goal, we provide the most dependable warranty in the industry, where all of our products are backed by a 3-year limited warranty from the date of manufacture. All warranties are handled directly through ECOFIT Networks. End users must contact ECOFIT directly to obtain warranty. To determine if a product is within the 3-year limited warranty, contact support@myecofit.com.

## 3 Year Limited Warranty

Limited Warranty The liability of ECOFIT under this warranty is limited. The Purchaser, by taking receipt of any ECOFIT product ("Product"), acknowledges the terms of the Limited Warranty in effect at the time of such Product sale and acknowledges that it has read and understands same.

The ECOFIT Limited Warranty to the Purchaser on the Products sold hereunder is a manufacturer's pass-through warranty which the Purchaser is authorized to pass through to its customers. Under the Limited Warranty, each ECOFIT Product is warranted against defects in workmanship and materials if the Product is installed and used in compliance with ECOFIT's instructions, ordinary wear and tear accepted. The pass-through warranty period is for a period of thirty-six (36) months from the date of purchase if the Product is not installed during that period, or twelve (12) months from the documented date of installation if installed within twenty-four (24) months from the original purchase date.

The liability of ECOFIT under the Limited Warranty shall be limited to, at ECOFIT's sole discretion: the cost of parts and labor provided by ECOFIT to repair defects in materials and / or workmanship of the defective product; or to the exchange of the defective product for a warranty replacement product; or to the granting of credit limited to the original cost of the defective product, and such repair, exchange or credit shall be the sole remedy available from ECOFIT, and, without limiting the foregoing in any way, ECOFIT is not responsible, in contract, tort or strict product liability, for any other losses, costs, expenses, inconveniences, or damages, whether direct, indirect, special, secondary, incidental or consequential, arising from ownership or use of the product, or from defects in workmanship or materials, including any liability for fundamental breach of contract.

The pass-through Limited Warranty applies only to those defective Products returned to ECOFIT during the warranty period. This Limited Warranty does not cover the cost of the parts or labor to remove or transport the defective Product nor does it cover the cost to transport and reinstall the repaired or replacement Product, all such costs and expenses being subject to Purchaser's agreement and warranty with its customers.

Any representations or warranties about the Products made by Purchaser to its customers which are different from or in excess of the ECOFIT Limited Warranty are the Purchaser's sole responsibility and obligation. Purchaser shall indemnify and hold ECOFIT harmless from and against any and all claims, liabilities and damages of any kind or nature which arise out of or are related to any such representations or warranties by Purchaser to its customers.

The pass-through Limited Warranty does not apply if the returned Product has been damaged by negligence by persons other than ECOFIT, accident, fire, Act of God, abuse or misuse; or has been damaged by modifications, alterations or attachments made subsequent to purchase which have not been authorized by ECOFIT; or if the Product was not installed in compliance with ECOFIT's instructions; or if due to defective installation of the Product; or if the Product was not used in compliance with ECOFIT's instructions.

THIS WARRANTY IS IN LIEU OF ALL OTHER WARRANTIES, EXPRESS OR IMPLIED, WHICH THE GOVERNING LAW ALLOWS PARTIES TO CONTRACTUALLY EXCLUDE, INCLUDING, WITHOUT LIMITATION, IMPLIED WARRANTIES OF MERCHANTABILITY AND FITNESS FOR A PARTICULAR PURPOSE, DURABILITY OR DESCRIPTION OF THE PRODUCT, ITS NON-INFRINGEMENT OF ANY RELEVANT PATENTS OR TRADEMARKS, AND ITS COMPLIANCE WITH OR NON-VIOLATION OF ANY APPLICABLE ENVIRONMENTAL, HEALTH OR SAFETY LEGISLATION; THE TERM OF ANY OTHER WARRANTY NOT HEREBY CONTRACTUALLY EXCLUDED IS LIMITED SUCH THAT IT SHALL NOT EXTEND BEYOND TWENTY-FOUR (24) MONTHS FROM THE PRODUCTION DATE, TO THE EXTENT THAT SUCH LIMITATION IS ALLOWED BY THE GOVERNING LAW.

Product Warranty Return Procedure All Products that are believed to have defects in workmanship or materials must be returned, together with a written description of the defect and a Return to Manufacturer Number (RMA) to ECOFIT. An RMA can be obtained by contacting support@myecofit.com



Check out our online Help Center for more information.

[myecofit.zendesk.com](https://myecofit.zendesk.com)

EM - support@myecofit.com

TF - 1.855.380.0123



**FCC ID: 2ADCN-GTY110**

*This device complies with part 15 of the FCC Rules. Operation is subject to the following two conditions:*

*(1) This device may not cause harmful interference, and*

*(2) this device must accept any interference received, including interference that may cause undesired operation.*

**Canada, Industry Canada (IC)**

**IC: 12408A-GTY110**

**CAN ICES-3 (B)/NMB-3(B)**

*This Class B digital apparatus complies with Canadian ICES-003 and RSS-210.*

*This device complies with Industry Canada license-exempt RSS standard(s).*

*Under Industry Canada regulations, this radio transmitter may only operate using an antenna of a type and maximum (or lesser) gain approved for the transmitter by Industry Canada. To reduce potential radio interference to other users, the antenna type and its gain should be so chosen that the equivalent isotropically radiated power (e.i.r.p.) is not more than that necessary for successful communication.*

*The minimum distance where the maximum permissible exposure limit is reached is 3.01 cm from the GTY110 with the 1.3dBi antenna.*

*It is recommended that the unit is positioned so that the typical distance from the antenna to the end user is 20cm or greater.*

**NOTE: THE MANUFACTURER IS NOT RESPONSIBLE FOR ANY RADIO OR TV INTERFERENCE CAUSED BY UNAUTHORIZED MODIFICATIONS TO THIS EQUIPMENT. SUCH MODIFICATIONS COULD VOID THE USER'S AUTHORITY TO OPERATE THE EQUIPMENT.**



Do not dispose of this electronic device into the trash.

To minimize pollution and ensure environmental protection, please recycle.