

USER GUIDE

WIRELESS FINGER CONTROLLER



THIS DEVICE COMPLIES WITH PART 15 OF THE FCC RULES. OPERATION IS SUBJECT TO THE FOLLOWING TWO CONDITIONS: (1) THIS DEVICE MAY NOT CAUSE HARMFUL INTERFERENCE, AND (2) THIS DEVICE MUST ACCEPT ANY INTERFERENCE RECEIVED, INCLUDING INTERFERENCE THAT MAY CAUSE UNDESIRE OPERATION.

NOTE: THE GRANTEE IS NOT RESPONSIBLE FOR ANY CHANGES OR MODIFICATIONS NOT EXPRESSLY APPROVED BY THE PARTY RESPONSIBLE FOR COMPLIANCE. SUCH MODIFICATIONS COULD VOID THE USER'S AUTHORITY TO OPERATE THE EQUIPMENT.

Safety & Care

Your ODG Wireless Finger Controller has been designed and manufactured to stringent quality and safety standards. You should, however, be aware of the following important precautions for safe use.



This device contains lithium ion batteries, which can explode or cause burns if disassembled or exposed to fire or high heat. Batteries must be disposed and recycled safely and properly.



Read all of these instructions carefully.



Keep these instructions for future reference.



Heed all warnings.



Clean only with dry cloth.



Only use attachments/accessories specified by ODG.



Do not store glasses near any heat sources such as radiators, registers, stoves, amplifiers or other items that produce heat.

Included in the Kit



WIRELESS
FINGER
CONTROLLER



WIRELESS
FINGER
CONTROLLER
BATTERY



WIRELESS
FINGER
CONTROLLER
USB CHARGER

Main Controls

Track Pad

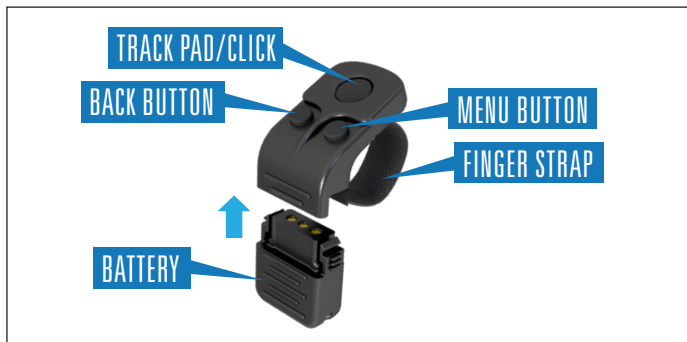
Finger Swipe Controls cursor/selector
Press down Click/select

Back Button

Short Press Navigates to previous screen
Long Press Navigates to Home Screen
Short Press, Home Screen Displays or Hides Home Screen

Menu Button

Short Press Navigates to previous screen
Long Press Navigates to Home Screen
Short Press, Home Screen Displays or Hides Home Screen



Wireless Finger Controller

The Wireless Finger Controller is an input device for the system that is worn on the user's index finger and controlled with their thumb. The Track Pad, Menu and Back buttons function in the same manner as the device's buttons. (See *Main Components*, Page 8)

To power up the controller, insert the battery and press and hold the Back and Menu buttons simultaneously until the status light flashes green.

If the controller does not connect to the glasses the battery may not be charged or the Bluetooth pairing may be lost.

Bluetooth Pairing

To enter pairing mode on the controller, press the Back, Menu and Track Pad simultaneously until the status light blinks blue. On the glasses, press and hold the Menu button to display the System Menu (See *Page 16*) and select Settings. Under the Bluetooth settings, select the controller from the list of available devices.

Charging

Included in the kit is a charger for the Wireless Finger Controller battery. Disconnect the battery from the controller and insert the battery into the charger. The battery should be fully charged in 3 hours.

OSTERHOUT DESIGN GROUP
153 Townsend Street, Suite 570
San Francisco, CA 04107
Tel: (415) 644-4000

www.osterhoutgroup.com