

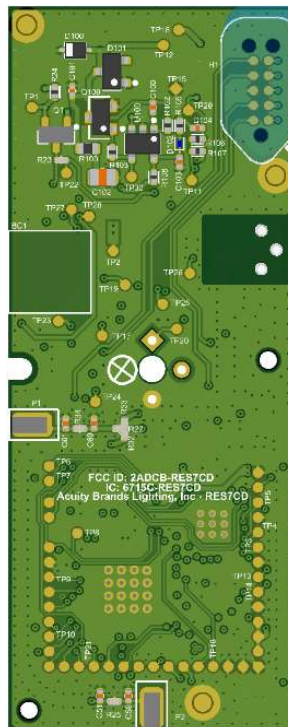
RES7CD Labeling Requirements

Module Label

A label will be silkscreened to the module. The size of this label will be no greater than 10x16mm. And will contain the following text:

FCC ID: 2ADCB-RES7CD
IC: 6715C-RES7CD
Acuity Brands Lighting Inc. RES7CD

Module Label Picture



Confidentiality Notice:

The information in this document is a property of Acuity Brands Lighting and is to be held in complete confidence. Any reproduction or redistribution of this document without the written consent of Acuity Brands Lighting is prohibited.

Host Label

A label will be affixed to the host device with the following text:

Contains FCC ID: 2ADCB-RES7CD
Contains IC: 6715C-RES7CD
Acuity Brands Lighting Inc. RES7CD

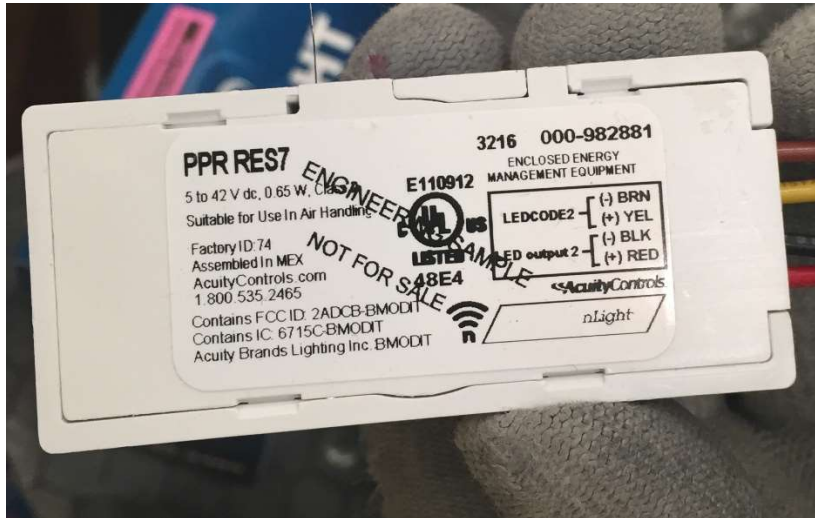
This device complies with Part 15 of the FCC Rules.
Operation is subject to the following two conditions:
(1) This device may not cause harmful interference,
and (2) this device must accept any interference
received, including interference that may cause
undesired operation.

The label will be properly sized to fit the application. If the host device is smaller than the palm of a hand, the label will be:

Contains FCC ID: 2ADCB-RES7CD
Contains IC: 6715C-RES7CD
Acuity Brands Lighting Inc. RES7CD

The label will be properly sized to fit the application.

Example:



User Manual:

The RES7CD user manual will contain all information required to create a label.

Confidentiality Notice:

The information in this document is a property of Acuity Brands Lighting and is to be held in complete confidence. Any reproduction or redistribution of this document without the written consent of Acuity Brands Lighting is prohibited.