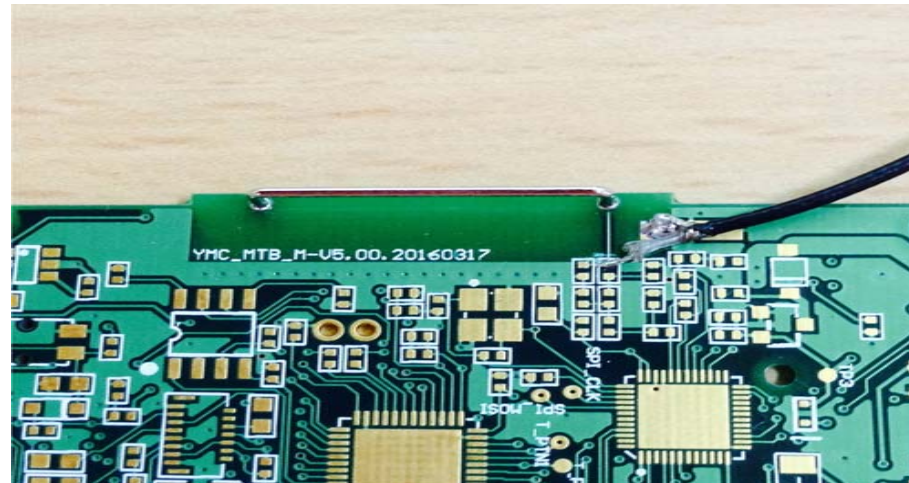
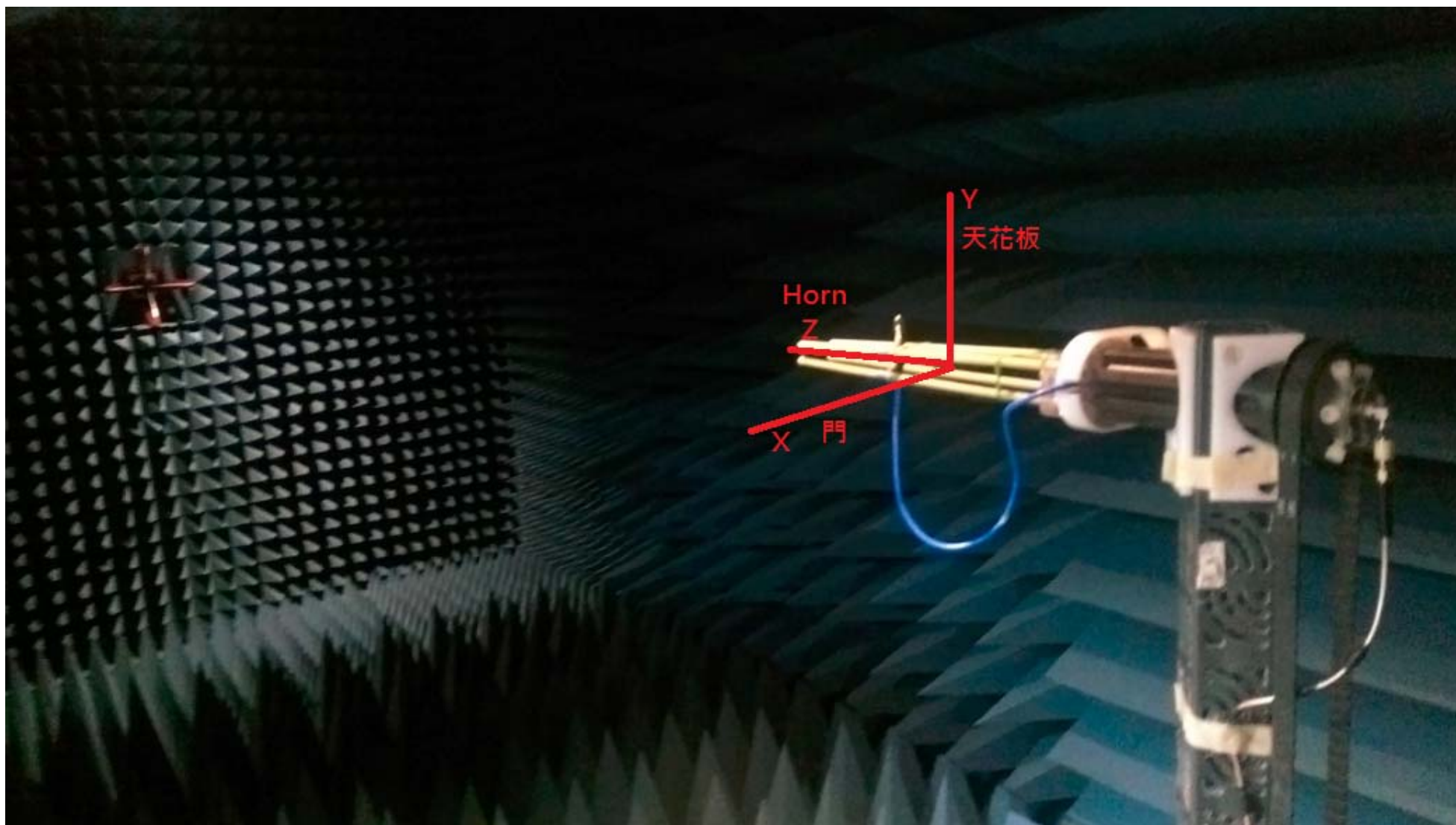


# ECHOWELL Antenna Patter

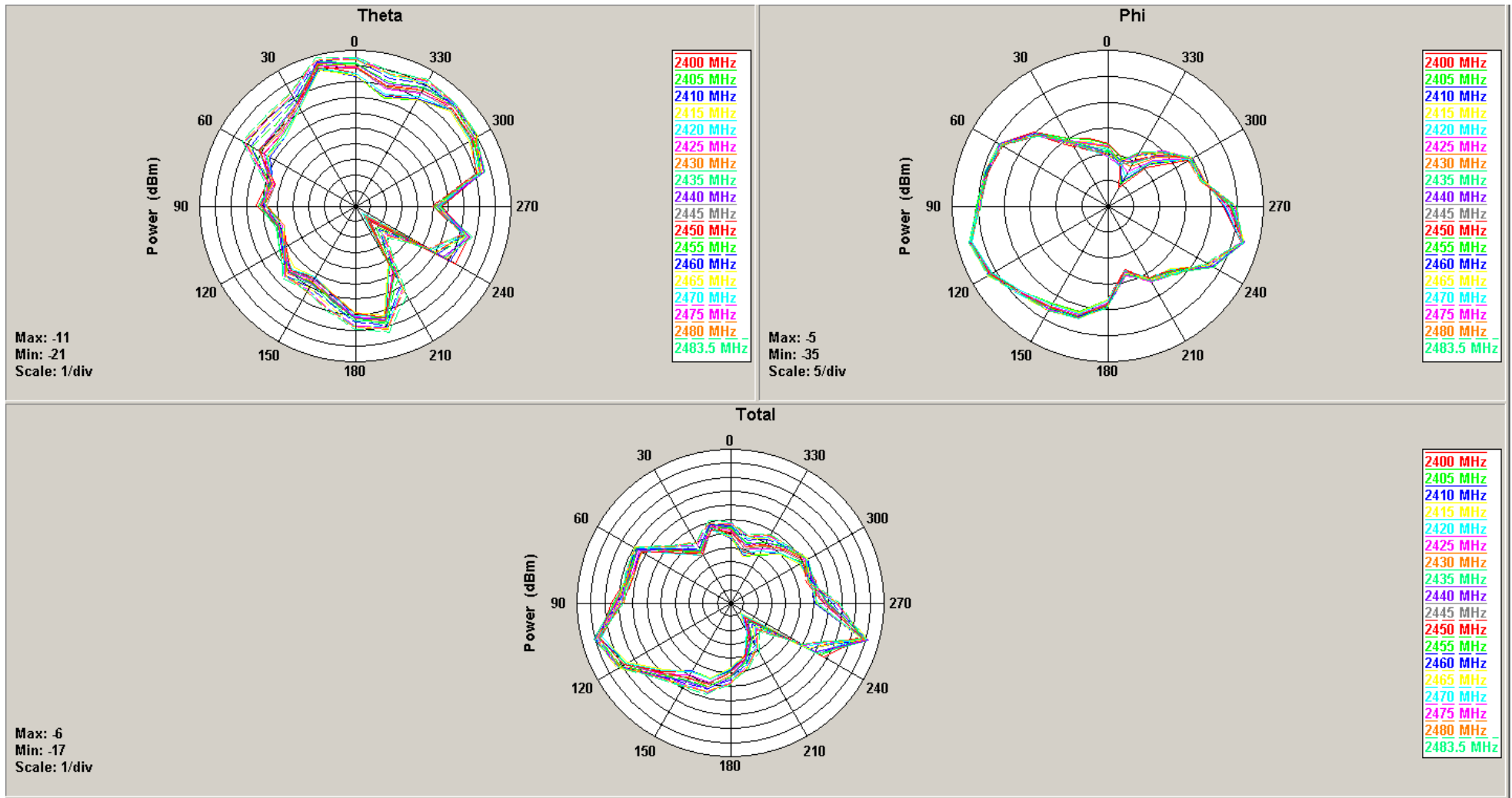


Echowell																		
Frequency (MHz)	2400	2405	2410	2415	2420	2425	2430	2435	2440	2445	2450	2455	2460	2465	2470	2475	2480	2484
Point Values																		
Ant. Port Input Pwr. (dBm)	0.00	0.00	0.00	0.00	0.00	0.00	0.00	0.00	0.00	0.00	0.00	0.00	0.00	0.00	0.00	0.00	0.00	0.00
Tot. Rad. Pwr. (dBm)	-11.00	-11.07	-11.16	-11.25	-11.17	-10.94	-10.78	-10.68	-10.76	-11.06	-11.09	-10.88	-10.73	-10.63	-10.69	-10.70	-10.70	-10.64
Peak EIRP (dBm)	-6.45	-6.51	-6.50	-6.52	-6.39	-6.04	-5.82	-5.76	-5.83	-6.03	-6.05	-5.79	-5.57	-5.43	-5.54	-5.49	-5.49	-5.40
Directivity (dBi)	4.54	4.56	4.66	4.72	4.77	4.90	4.96	4.92	4.93	5.04	5.04	5.10	5.16	5.20	5.15	5.21	5.21	5.24
Efficiency (dB)	-11.00	-11.07	-11.16	-11.25	-11.17	-10.94	-10.78	-10.68	-10.76	-11.06	-11.09	-10.88	-10.73	-10.63	-10.69	-10.70	-10.70	-10.64
Efficiency (%)	7.95	7.82	7.66	7.50	7.65	8.05	8.36	8.55	8.39	7.83	7.78	8.16	8.46	8.64	8.54	8.51	8.51	8.63
Gain (dBi)	-6.45	-6.51	-6.50	-6.52	-6.39	-6.04	-5.82	-5.76	-5.83	-6.03	-6.05	-5.79	-5.57	-5.43	-5.54	-5.49	-5.49	-5.40
NHPRP 扇i/4 (dBm)	-12.56	-12.62	-12.70	-12.78	-12.69	-12.45	-12.28	-12.17	-12.24	-12.53	-12.55	-12.33	-12.16	-12.06	-12.10	-12.11	-12.10	-12.03
NHPRP 扇i/6 (dBm)	-14.03	-14.10	-14.17	-14.25	-14.16	-13.92	-13.74	-13.62	-13.68	-13.97	-13.98	-13.76	-13.58	-13.47	-13.51	-13.51	-13.49	-13.41
NHPRP 扇i/8 (dBm)	-15.13	-15.19	-15.26	-15.34	-15.25	-15.01	-14.82	-14.70	-14.75	-15.04	-15.04	-14.81	-14.64	-14.52	-14.55	-14.55	-14.53	-14.45
Upper Hem. PRP (dBm)	-12.76	-12.83	-12.91	-12.99	-12.90	-12.67	-12.51	-12.42	-12.50	-12.80	-12.84	-12.63	-12.48	-12.39	-12.44	-12.45	-12.46	-12.39
Lower Hem. PRP (dBm)	-15.75	-15.84	-15.95	-16.05	-15.99	-15.77	-15.61	-15.51	-15.58	-15.88	-15.89	-15.68	-15.52	-15.42	-15.48	-15.49	-15.48	-15.43

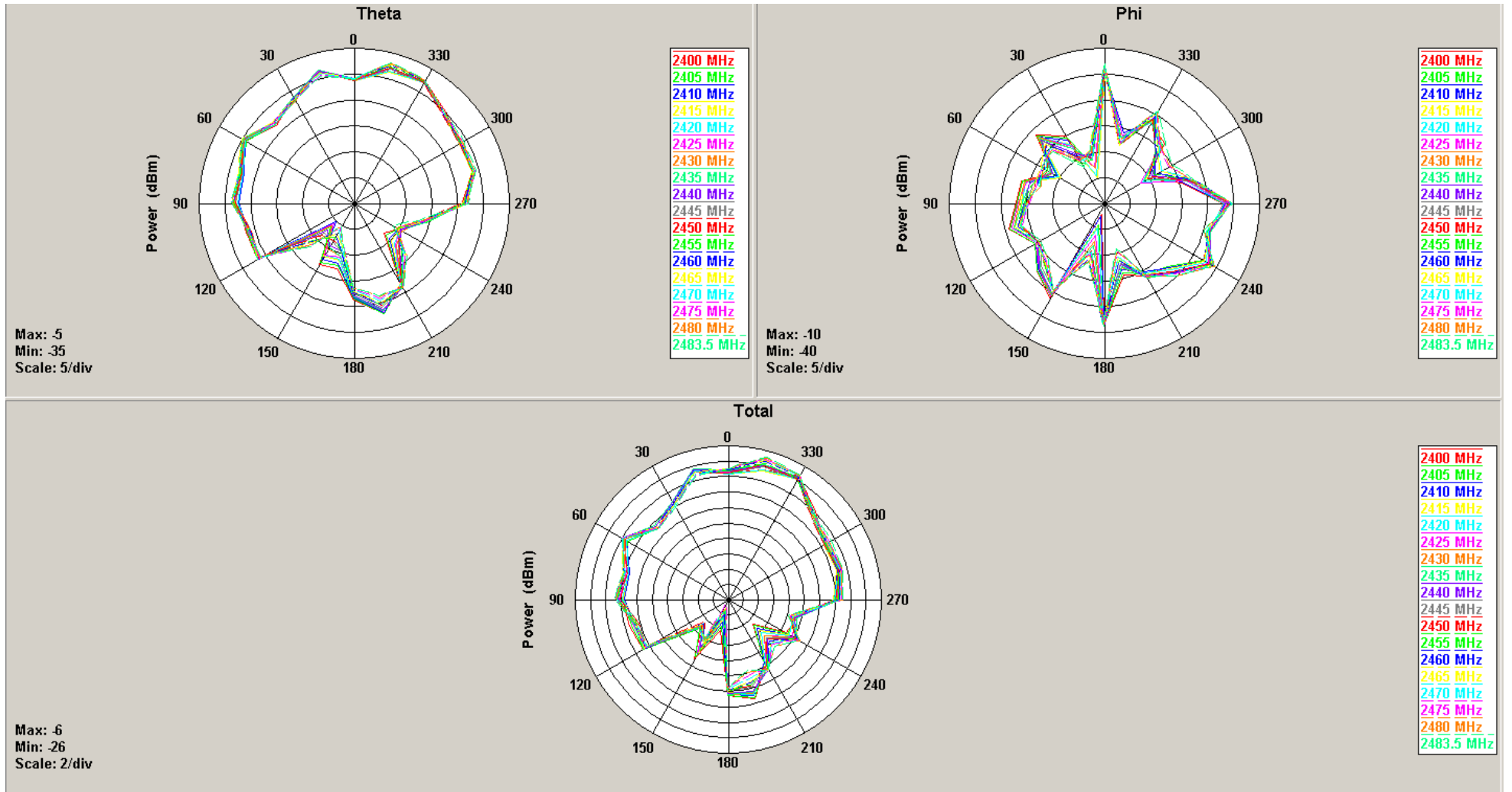
## Test Setup



XY



XZ



YZ

