

Host Integration Guide

FCC ID: 2ADAP-GRJWB05J6

IC: 12478A-GRJWB05J6

The module is not intended for general public and integrators.

It is generally for industry/commercial use and must be professionally installed.

The module is limited to installation in mobile applications.

Installation must be controlled and requires special training.

According to KDB996369 D03 2.0 INTEGRATION INSTRUCTIONS(2.2-2.7)

2.2

This module has been assessed against the following FCC rule parts: CFR 47 FCC Part 15 C (15.247, DTS and DSS) and CFR 47 FCC Part 15 E (NII). It is applicable to the modular transmitter.

2.3

This radio transmitter FCC ID: 2AC232AC23-WL3H has been approved by Federal Communications

Commission to operate with the integrated PCB antenna. Use of any other antenna is strictly prohibited without filing an application for a new system-specific FCC ID.

2.4

The module complies with FCC Part 15.247 / Part 15.407 and applies for limited module approval.

Installation Guidance

The final host / module combination may also need to be evaluated against the FCC Part 15B criteria for unintentional radiators in order to be properly authorized for operation as a Part 15 digital device. The user's manual or instruction manual for an intentional or unintentional radiator shall caution the user that changes or modifications not expressly approved by the party responsible for compliance could void the user's authority to operate the equipment. In cases where the manual is provided only in a form other than paper, such as on a computer disk or over the Internet, the information required by this section may be included in the manual in that alternative form, provided the user can reasonably be expected to have the capability to access information in that form.

To ensure compliance with all non-transmitter functions the host manufacturer is responsible for ensuring compliance with the module(s) installed and fully operational. For example, if a host was previously authorized as an unintentional radiator under the Declaration of Conformity procedure without a transmitter certified module and a module is added, the host manufacturer is responsible for ensuring that after the module is installed and operational the host continues to be compliant with the Part 15B unintentional radiator requirements.

The use condition limitations extend to professional users, then instructions must state that this information also extends to the host manufacturer's instruction manual. This module is a limit modules. host manufacturer should confirm with module manufacturer for the installation method in end system.

RF exposure evaluation when it is necessary to demonstrate compliance in a specific host.

2.5

Trace antenna designs: Not applicable – the antenna is integrated into the module and cannot be modified. See section 2.3.

2.6

This equipment complies with FCC radiation exposure limits set forth for an uncontrolled environment. This equipment should be installed and operated with a minimum distance of 20cm between the radiator & your body. This transmitter must not be co-located or operating in conjunction with any other antenna or transmitter.

2.7

Antenna type and antenna gain for BLE/2.4G WIFI/5G WIFI:

Antenna Type	MAX Antenna Gain (dBi)
PCB	1.5

Note: PCB Antenna is permanently attached and can't be replaced.

2.8

Please note that if the FCC identification number is not visible when the module is installed inside another device, then the outside of the device into which the module is installed must also display a label referring to the enclosed module. This exterior label can use wording such as the following: "Contains FCC ID: 2ADAP-GRJWB05J6" Any similar wording that expresses the same meaning may be used.

2.9

Testing of the host product with all the transmitters installed – referred to as the composite investigation test- is recommended, to verify that the host product meets all the applicable FCC rules. The radio spectrum is to be investigated with all the transmitters in the final host product functioning to determine that no emissions exceed the highest limit permitted for any one individual transmitter as required by Section 2.947(f). The host manufacturer is responsible for ensuring that when their product operates as intended it does not have any emissions present that are out of compliance that were not present when the transmitters were tested individually.

The host product manufacturer is responsible for compliance with any other FCC rules and a C2PC is required for each host when installed in any host.

2.10

Any company of the host device which installs this modular should perform the test of radiated & conducted emission and spurious emission etc. according to FCC Part 15C: 15.247 and 15.209 & 15.207, 15B class B requirement, only if the test result comply with FCC part 15C: 15.247 and 15.209 & 15.207, 15B class B requirement. Then the host can be sold legally.

The host product manufacturer is responsible for compliance with any other FCC rules and a C2PC is required for each host when installed in any host.

2.11

The host manufacturer is recommended to use D04 Module Integration Guide recommending as "best practice" RF design engineering testing and evaluation in case non-linear interactions generate additional non-compliant limits due to module placement to host components or properties.

2.12

This module is stand-alone modular. If the end product will involve the Multiple simultaneously transmitting condition or different operational conditions for a stand-alone modular transmitter in a host, host manufacturer have to consult with module manufacturer for the installation method in end system.

Detail instructions from the module manufacturer

Separate approval is required for all other operating configurations, including portable configurations with respect to Part 2.1093 and different antenna configurations.

The module is limited to OEM installation only.

The OEM integrator is responsible for ensuring that the end-user has manual instructions to remove or install the module.

Must use the device only in host devices that meet the FCC/ISED RF exposure category of mobile, which means the device is installed and used at distances of at least 20 cm from persons.

The end user manual shall include FCC Part 15 /ISED RSS GEN compliance statements related to the transmitter as shown in this manual.

The host product manufacturer is responsible for compliance with any other FCC rules and a C2PC is required for each host when installed in any host.

The host product manufacturer is responsible for compliance with any other ISED rules and a C4PC is required for each host when installed in any host.

Any company of the host device that installs this modular should perform the test of radiated and conducted emission and spurious emission etc. according to FCC Part 15C: 15.247 and 15.209 & 15.207, 15B class B requirement, only if the test result complies with FCC part 15C: 15.247 and 15.209 & 15.207, 15B class B requirement. Then the host can be sold legally.

This modular transmitter is only FCC-authorized for the specific rule parts (47CFR Part 15.247) listed on the grant, and the host product manufacturer is responsible for compliance with any other FCC rules that apply to the host not covered by the modular transmitter grant of certification.

Host manufacturer is strongly recommended to confirm compliance with FCC/ISED requirements for the transmitter when the module is installed in the host.

The use condition limitations extend to professional users, so instructions must state that this information also extends to the host manufacturer's instruction manual.

This module is stand-alone modular. If the end product will involve Multiple simultaneous transmitting conditions or different operational conditions for a stand-alone modular transmitter in a host, host manufacturer has to consult with the module manufacturer for the installation method in the end system.

Refer to the minimum antenna gain requirements and antenna type (PCB) that are approved for use with this module detailed in the previous sections. The use of other antennas will require additional certification procedures for the host system with FCC and ISED Canada.

This equipment complies with FCC and ISED-Canada radiation exposure limits set forth for an uncontrolled environment. This equipment should be installed in host systems that are installed and operated with a minimum distance of 20cm between the radiator & people. This transmitter must not be co-located or operating in conjunction with any other antenna or transmitter except as permitted by FCC and ISED-Canada multi-transmitter rules.

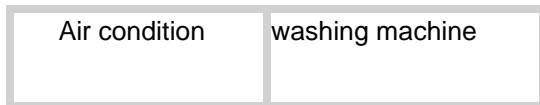
The module is limited to installation in mobile applications.

For a normal application, for example, A television, host systems that are installed and operated with a minimum distance of 20cm between the radiator and people.

If the end-user really needed to install in host systems that are installed and operated with a distance less than 20cm between the radiator & people, for example, a cell phone or laptop, the host systems need to comply with the requirements in KDB 996369 D03 OEM Manual v01 and KDB 996369 D04 Module Integration Guide v02.

The module is not intended for the public, it must be professionally installed.

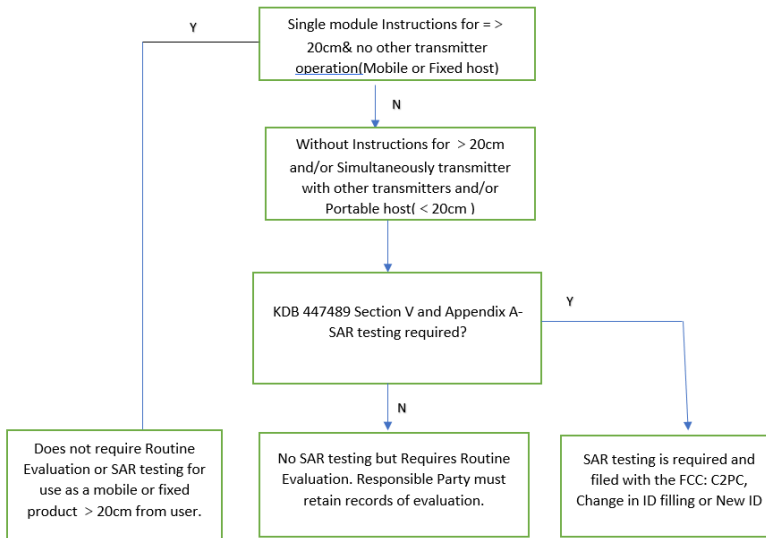
The typical application for the module:



For other devices, a special driver needs to be installed on the host before starting normal use for the module, and it is different for different kinds of hosts.

Please contact us for more details before installing on a host.

Here is a general guide to determine RF exposure compliance:



For more information, please refer to the KDB 996369 D03 OEM Manual v01 and KDB 996369 D04 Module Integration Guide v02.

The end user manual shall include FCC Part 15 /ISED RSS GEN compliance statements related to the transmitter as shown below in addition to any other relevant statements or labeling requirements from e.g FCC Part 15 or the Canadian ICES standards.

This device complies with part 15 of the FCC Rules. Operation is subject to the following two conditions: (1) This device may not cause harmful interference, and (2) this device must accept any interference received, including interference that may cause undesired operation.

This device contains licence-exempt transmitter(s)/receiver(s) that comply with Innovation, Science and Economic Development Canada's licence-exempt RSS(s). Operation is subject to the following two conditions:

1. This device may not cause interference.
2. This device must accept any interference, including interference that may cause undesired operation of the device.

To ensure compliance with FCC and ISED RF exposure requirements this device must be installed to provide a minimum of 20cm between the device and people.

The device for operation in the band 5150–5250 MHz is only for indoor use to reduce the potential for harmful interference to co-channel mobile satellite systems

Host manufacturer is strongly recommended to confirm compliance with FCC/ISED requirements for the transmitter when the module is installed in the host according to FCC Part 15.247, RSS-247, and FCC part 15 E.

This modular transmitter is only FCC authorized for the specific rule parts (47CFR Part 15.247) listed on the grant, the host product manufacturer is responsible for compliance with any other FCC rules and a C2PC is required for each host when installed in any host.

The use condition limitations extend to professional users, then instructions must state that this information also extends to the host manufacturer's instruction manual.

This module is stand-alone modular. If the end product will involve Multiple simultaneous transmitting condition or different operational conditions for a stand-alone modular transmitter in a host, host manufacturer has to consult with module manufacturer for the installation method in the end system.

Linda Li

Company Name: Gree Electric Appliances, Inc. of Zhuhai

Contact Name: Linda Li

Title of Person: Certification Engineer

Address: Jinji West Rd, Qianshan, Zhuhai, Guangdong 519070 P.R. China

Date: 9/19/2023