



The Antenna Test Report

confidentiality

天线型号 (Antenna Version) : ANT-BBNCNC23024

产品型号 (Model of the DUT) : KHWP0130F001

PCB 编号及版本 (PCB number and version) : PL2S_V1.6

责任硬件工程师 (Hardware Engineer) : Jovan

测试日期 (Test Data) : 20240221

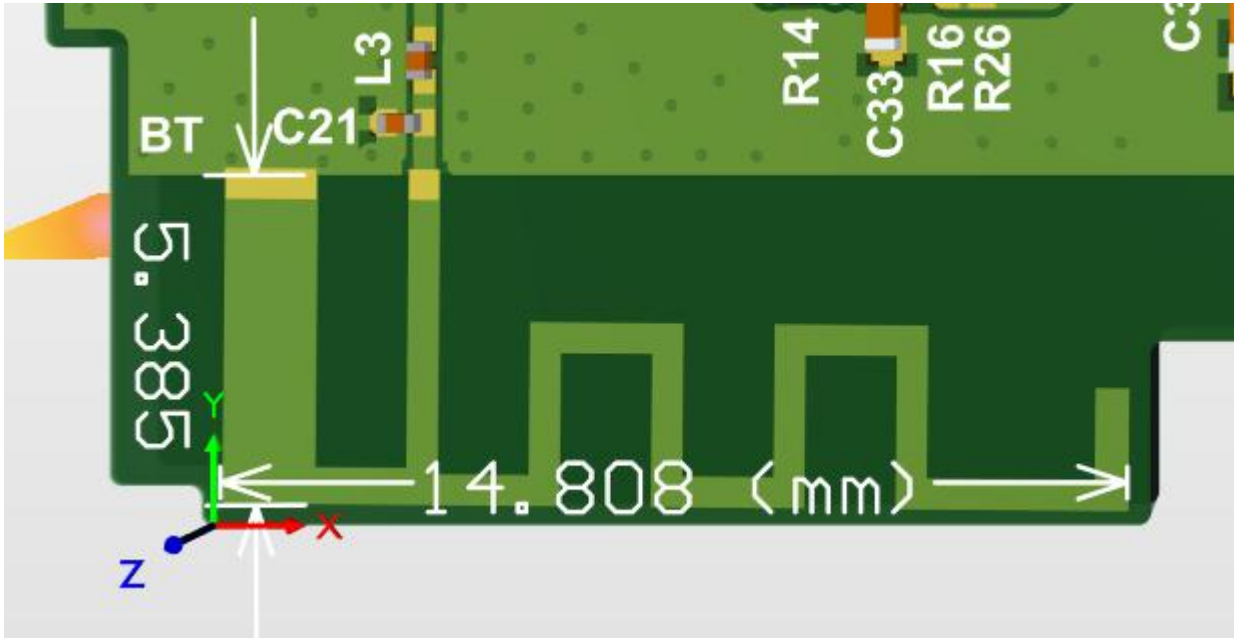
Antenna Manufacturer: Shenzhen Minew Technologies Co., Ltd.

Address: No.8 in Lon Road Lon hua District Shenzhen China

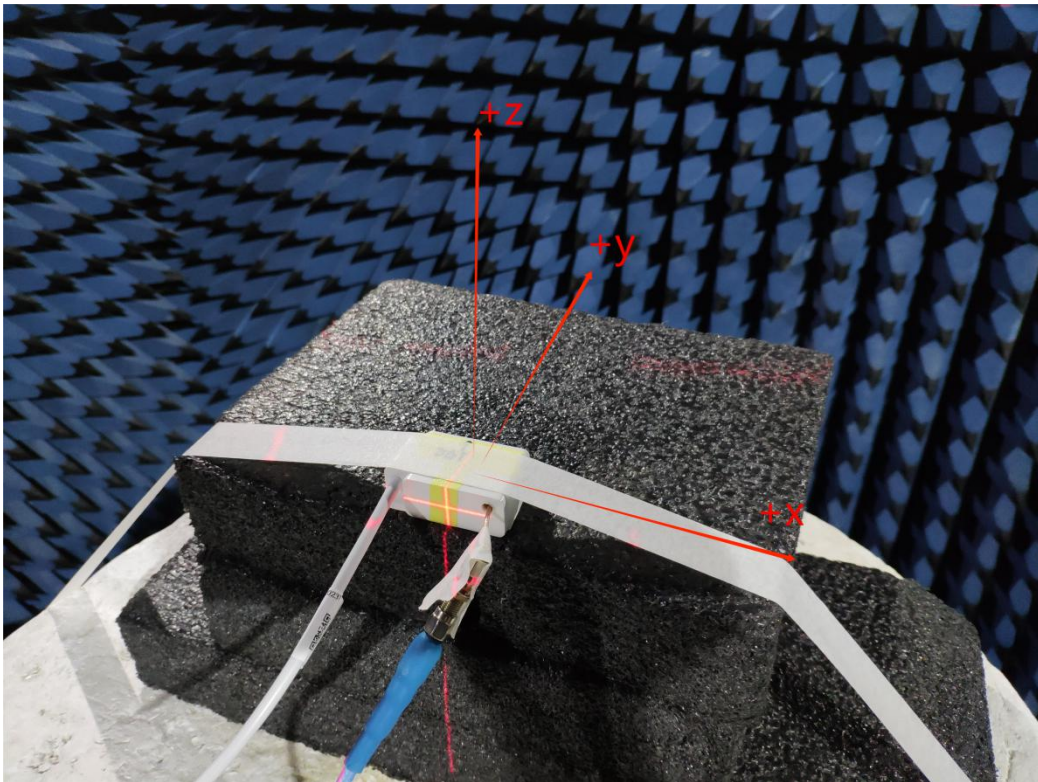
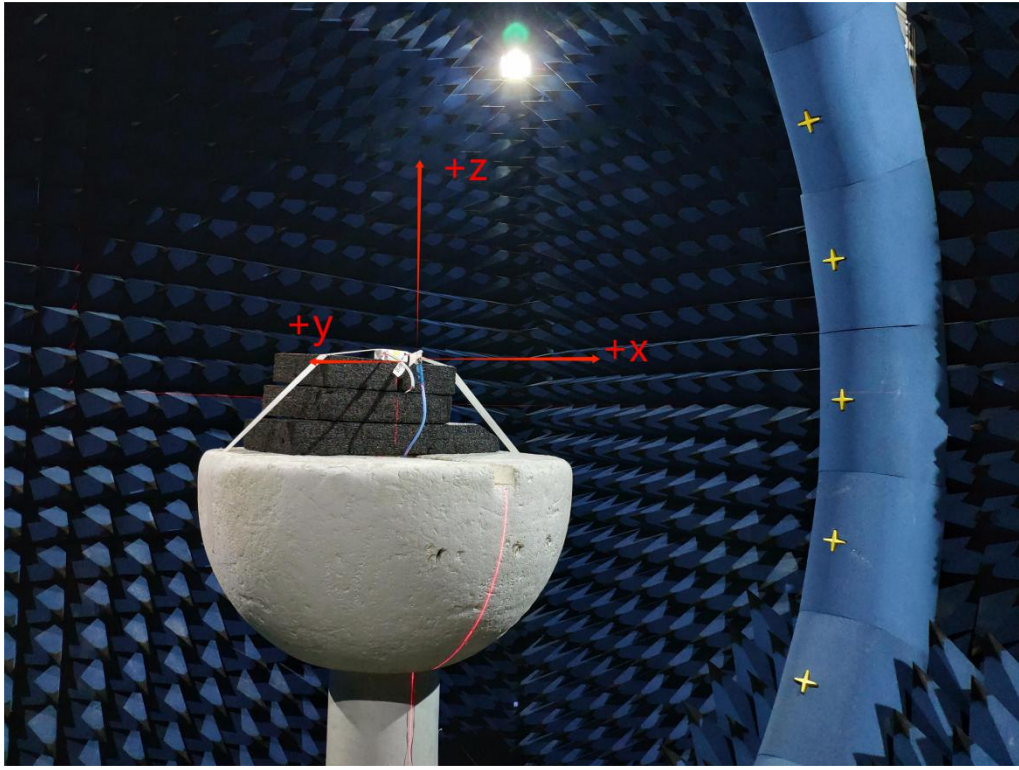
1、技术指标 (Technical Specification)

电性能指标 Electrical Specifications	
频率范围 Frequency Range (MHz)	2400-2480
频带宽度 Bandwidth (-10dB) (MHz)	0.2
输入阻抗 Input Impedance (Ω)	50
回波损耗 Return Loss (dB)	<-12.939
电压驻波比 VSWR	<1.58
增益 Gain (@2.44GHz) (dBi)	2.13
峰值增益 Peak Gain (dBi)	2.37
极化形式 Polarization Type	线极化 (Linear polarization) (注意也有其他极化)
雷电保护 Lightning Protection	直流接地 (DC grounding)
功率容量 Power Capacity (mW)	1000
机械指标 Mechanical Specifications	
天线尺寸 Antenna Size (mm)	14.808*5.385
辐射体 Radiator	铜 Cuprum
连接器型号 Connect Type	无
工作温度 Working Temperature ($^{\circ}\text{C}$)	-40~85
存储温度 Storage Temperature ($^{\circ}\text{C}$)	-40~85

2、天线外形和尺寸 (the shape and size of the antenna)



3、测试结果 (The result of the test)



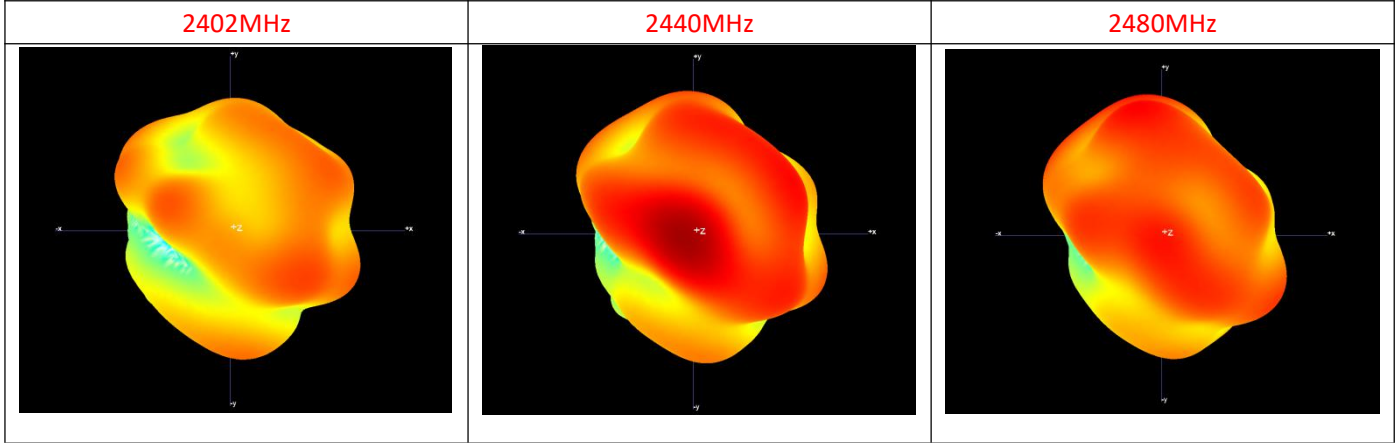
3.1 增益和效率 (Gain and Efficiency)

2400MHz	1.40	46%
2402MHz	1.43	46%
2404MHz	1.46	46%
2406MHz	1.38	46%
2408MHz	1.42	46%
2410MHz	1.47	47%
2412MHz	1.49	47%
2414MHz	1.49	47%
2416MHz	1.62	47%
2418MHz	1.65	47%
2420MHz	1.64	47%
2422MHz	1.66	48%
2424MHz	1.70	48%
2426MHz	1.99	49%
2428MHz	1.99	49%
2430MHz	1.99	49%
2432MHz	2.03	49%
2434MHz	2.07	50%
2436MHz	2.10	50%
2438MHz	2.10	50%
2440MHz	2.13	50%
2442MHz	2.16	50%
2444MHz	2.16	50%
2446MHz	2.35	51%
2448MHz	2.35	51%
2450MHz	2.36	51%
2452MHz	2.36	51%

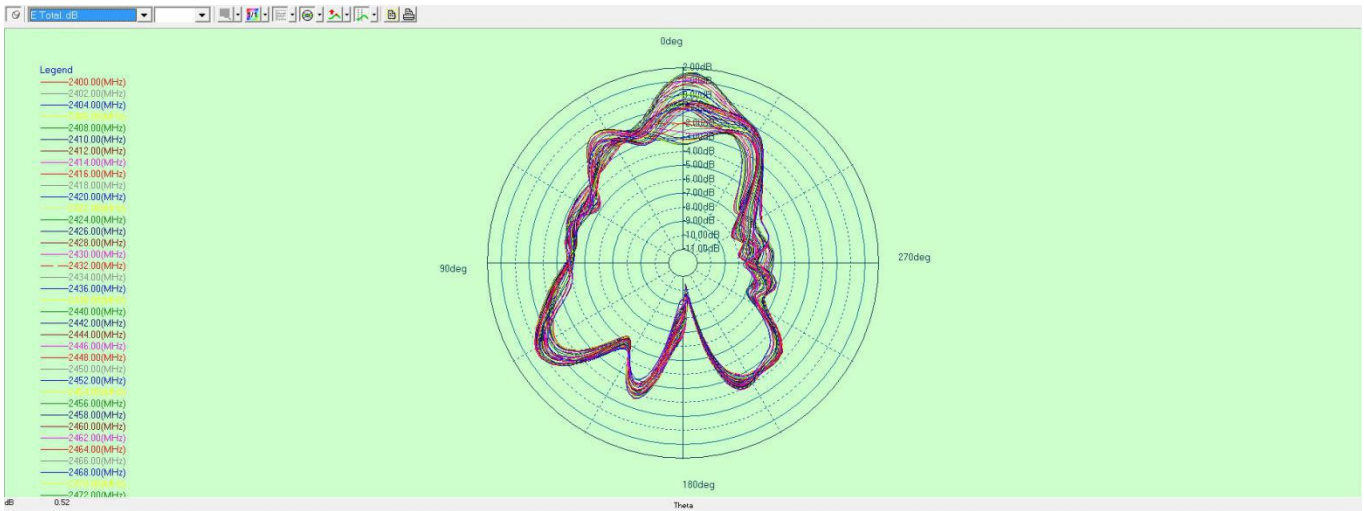
2454MHz	2.35	51%
2456MHz	2.31	51%
2458MHz	2.33	51%
2460MHz	2.35	51%
2462MHz	2.35	51%
2464MHz	2.37	51%
2466MHz	2.24	51%
2468MHz	2.25	52%
2470MHz	2.23	52%
2472MHz	2.22	52%
2474MHz	2.23	52%
2476MHz	2.21	52%
2478MHz	2.15	52%
2480MHz	2.09	52%

3.2、辐射方向图 (Radiation Pattern)

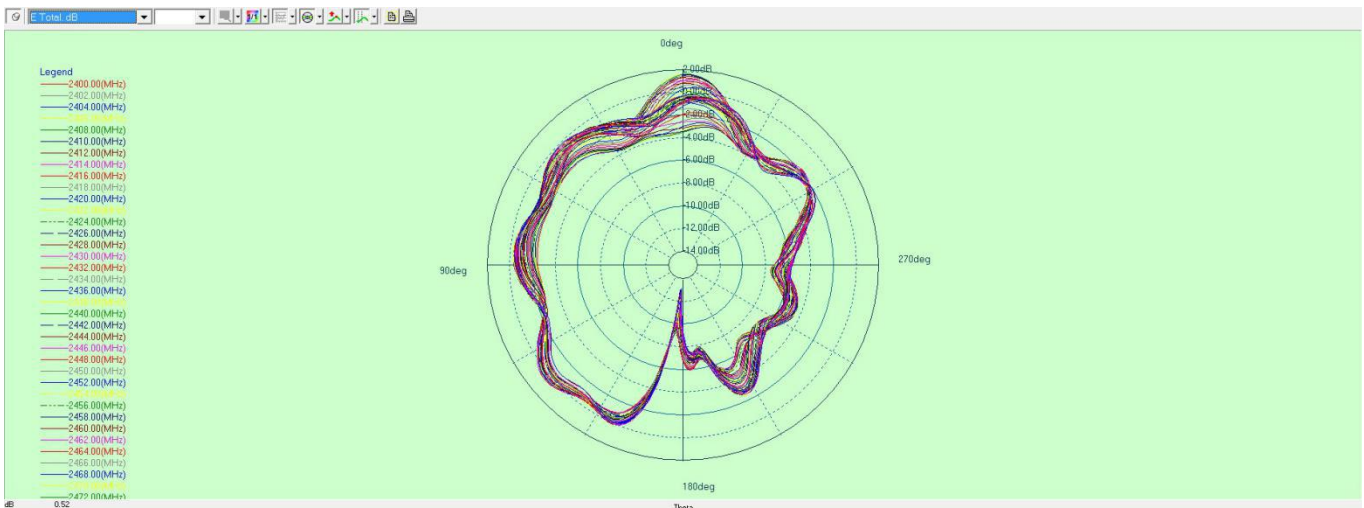
表 3D 方向图



(1) E1, XZ 面, $\phi=0^\circ$; (E1, XZ plane, $\phi=0^\circ$)



(2) E2, YZ 面, $\phi=90^\circ$; (E2, YZ plane, $\phi=90^\circ$)



(3) H, XY 面, $\theta=90^\circ$; (H, XY plane, $\theta=90^\circ$)

