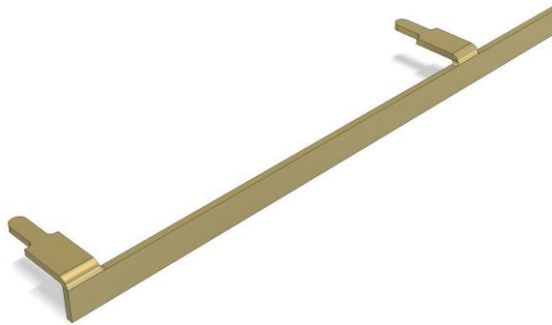
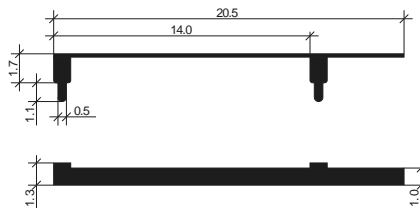


BM-ANT1 METAL SHEET ANTENNA DATASHEET



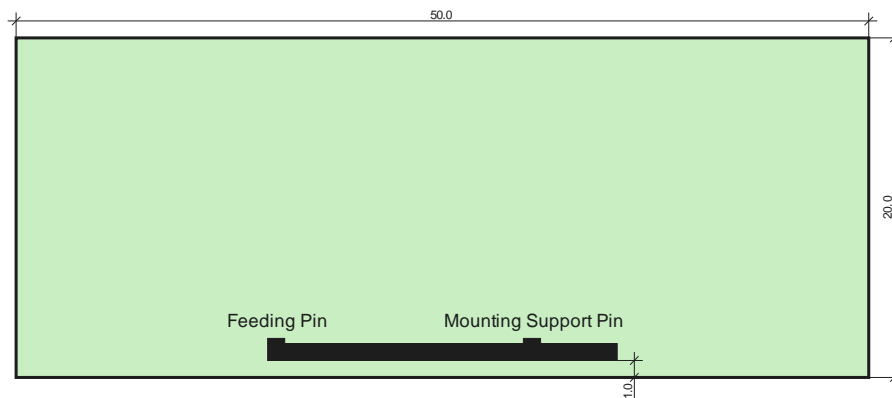
The BM-ANT1 antenna is designed for 2.4GHz applications and requires a ground plane extended beneath the antenna in order to radiate efficiently. It is easy to integrate, has a low profile and provides high efficiency.

Antenna Dimensions (in mm):



Placement and ground plane:

To get maximum performance, it is strongly recommended to place the antenna at the side of the PCB and to use a minimum ground plane size as shown below (all dimensions in mm):

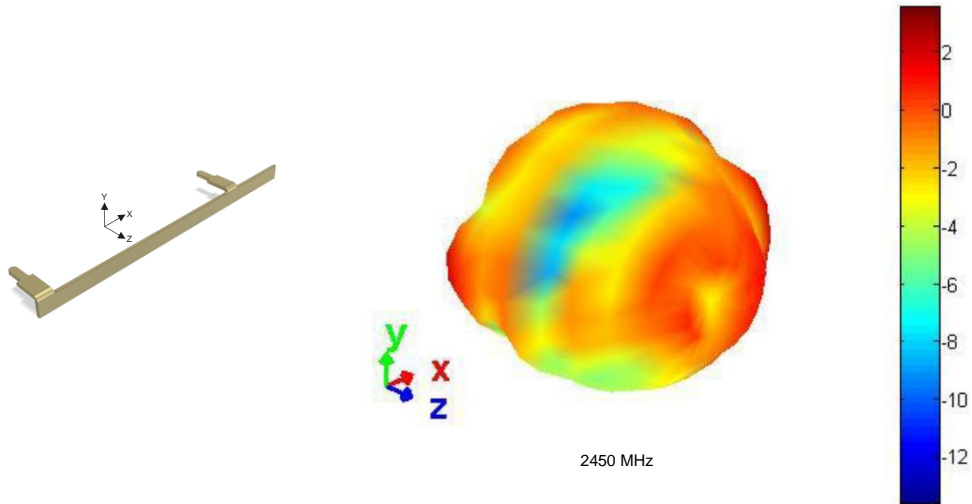


A distance of at least 0.4 mm should be kept between the mounting support pin solder pad and any ground plane.

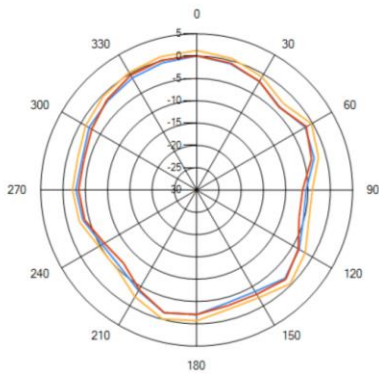
RF Characteristics:

	2.4 – 2.5 GHz
Peak gain	1.8dBi
Average gain	-1.9dBi
Average efficiency	65%
Maximum return loss	-11dB
Maximum VSWR	1.8:1

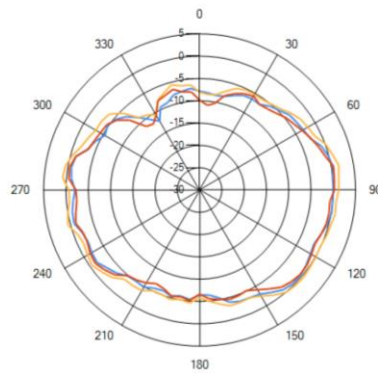
Radiation Pattern:



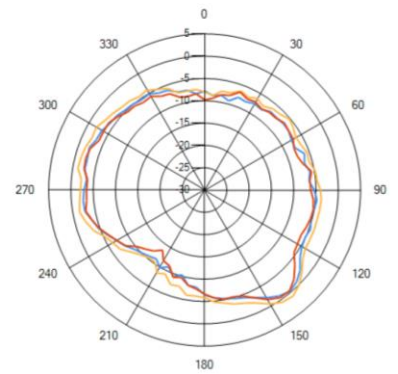
XY



XZ



YZ



— 2.4GHz — 2.45GHz — 2.5GHz

PRELIMINARY