



Technical Memo

Subject: Internal Photographs Exhibit

Date: 20 October 2023

Doc Ref: ES2304-ME06_v100

Revision: 1.00 RELEASED

Overview

This document contains the internal photographs of the Etherstack P25 Channel Controller (P25CC) and XBR5100 Transceiver equipment.

Model: XBR5100T5V

FCC ID: 2ADAKXBR5100T5V

P25CC Equipment

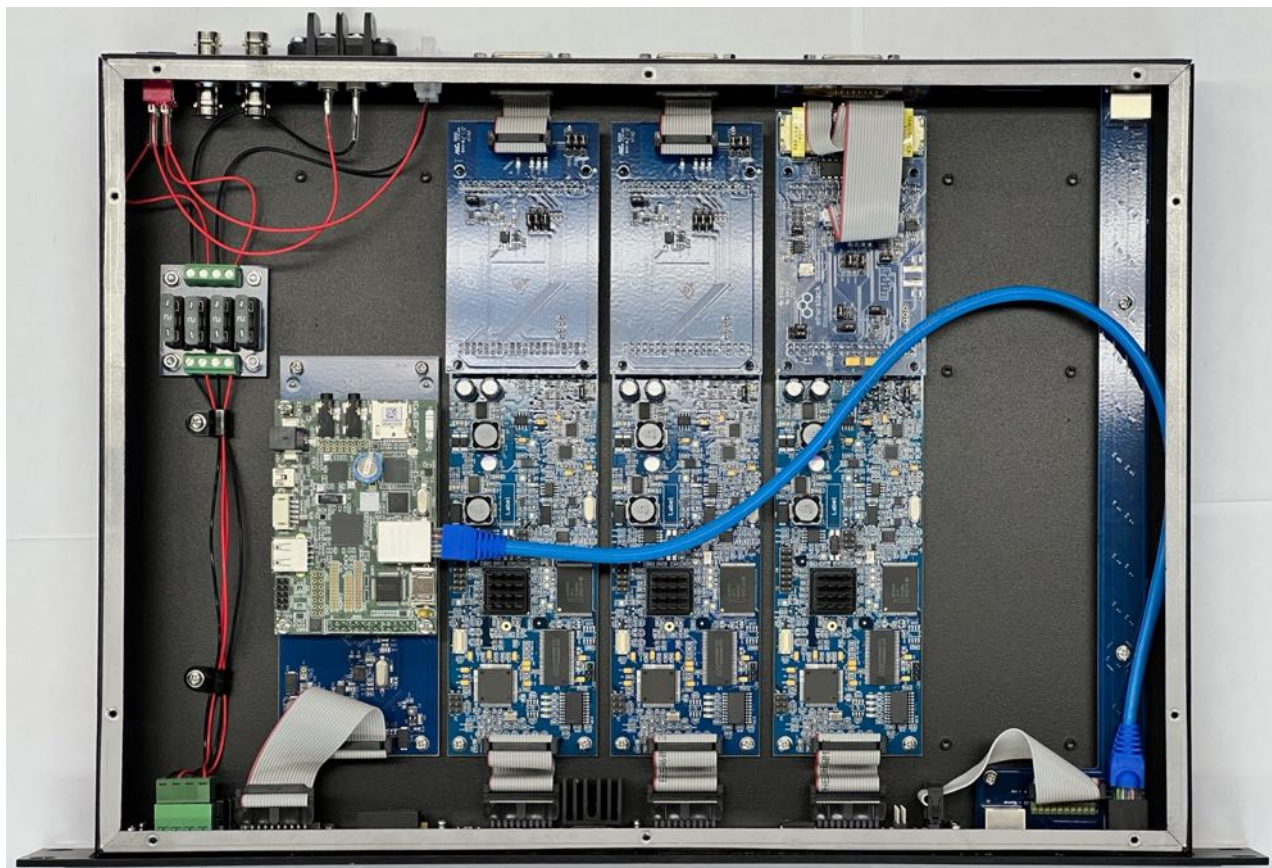


Photo 1 – Chassis Top View



Photo 2 – PB01 FSM Board Assembly Top View

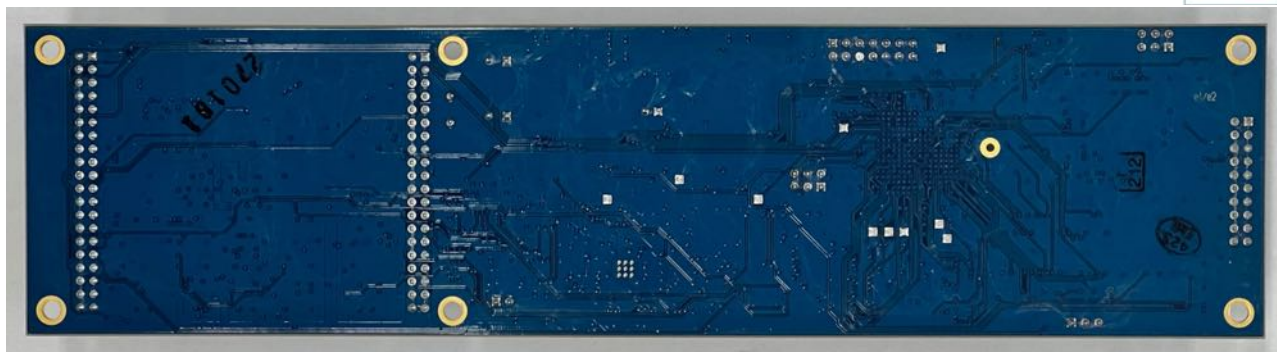


Photo 3 – PB01 FSM Board Assembly Bottom View



Photo 4 – PB02 LED Board Assembly Top View



Photo 5 – PB02 LED Board Assembly Bottom View

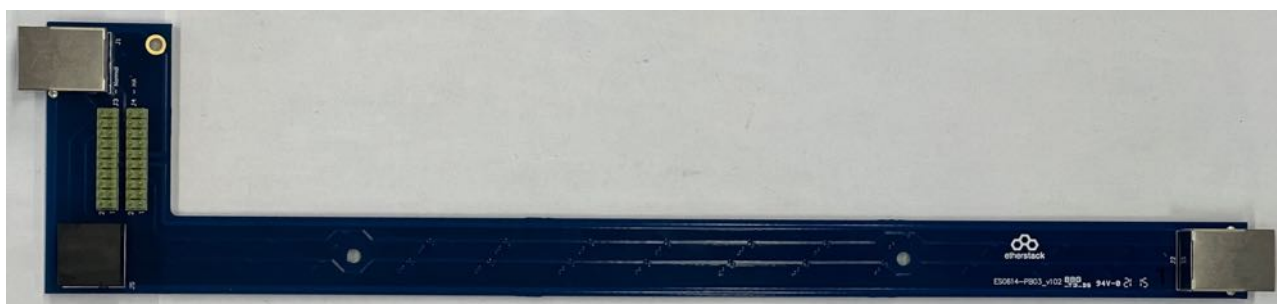


Photo 6 – PB03 RJ45 Connector Board Assembly Top View



Photo 7 – PB03 RJ45 Connector Board Assembly Bottom View



Photo 8 – PB04 Rear I/O Interface Board Assembly Top View



Photo 9 – PB04 Rear I/O Interface Board Assembly Bottom View



Photo 10 – PB10 AFSI Daughter Board Assembly Top View



Photo 11 – PB10 AFSI Daughter Board Assembly Bottom View

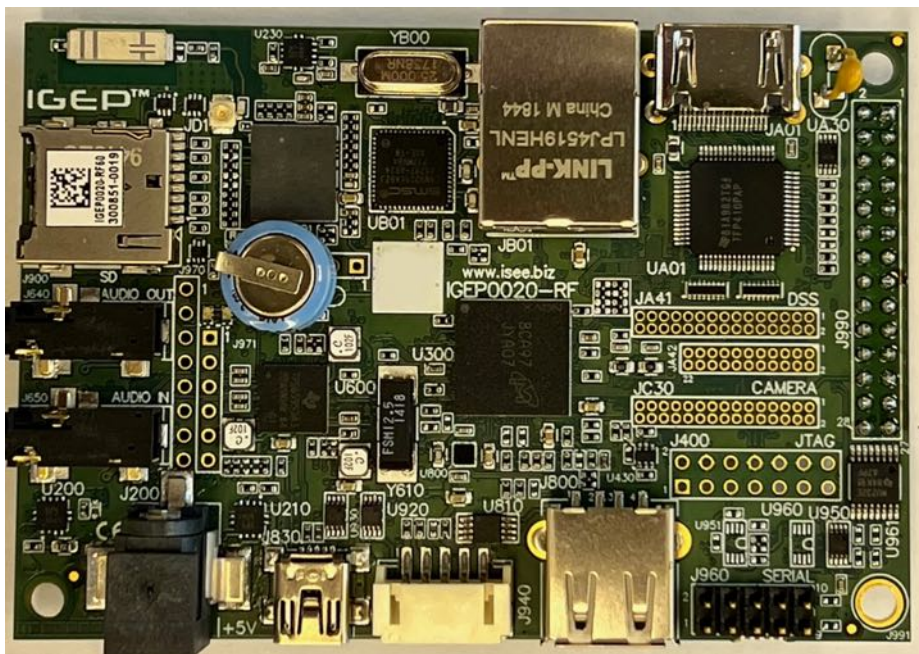


Photo 15 – IGEP Top View

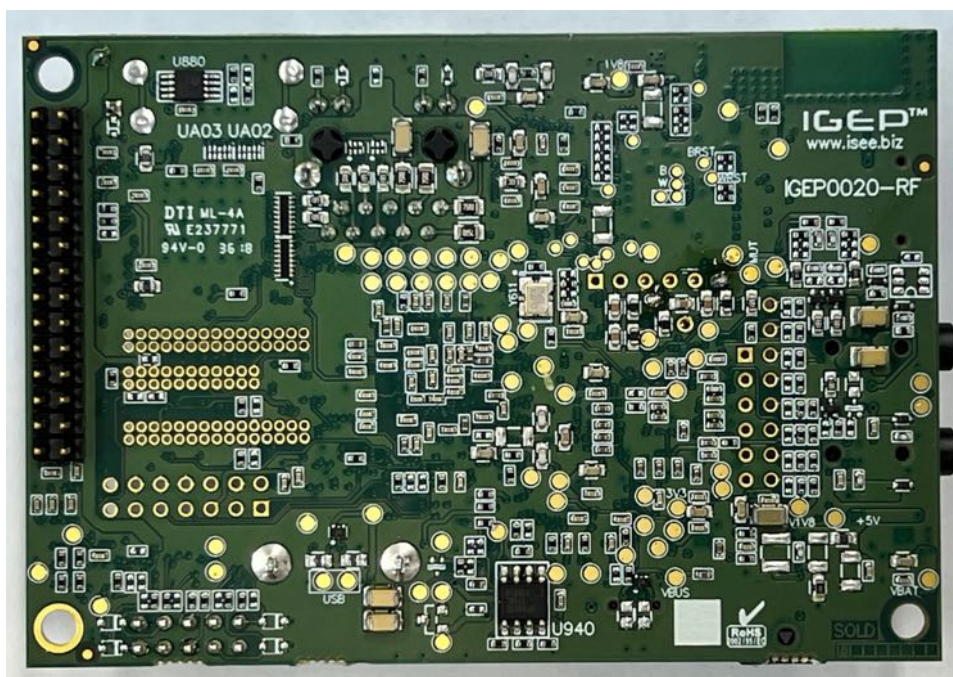


Photo 16 – IGEP Top View



Photo 17 – PB13 Fuse Board Assembly Top View

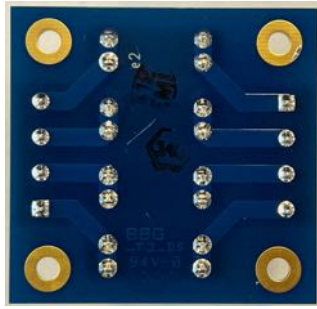


Photo 18 – PB13 Fuse Board Assembly Bottom View

XBR5100 Equipment



Photo 19 – Chassis Top View

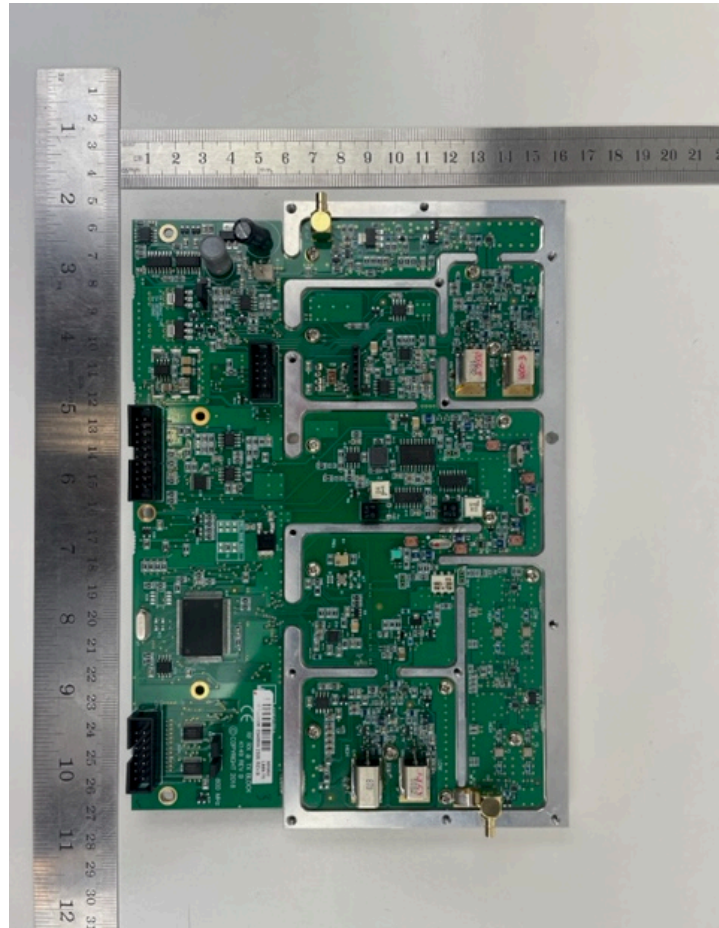


Photo 20 – Main RF Controller PCB Assembly Top View

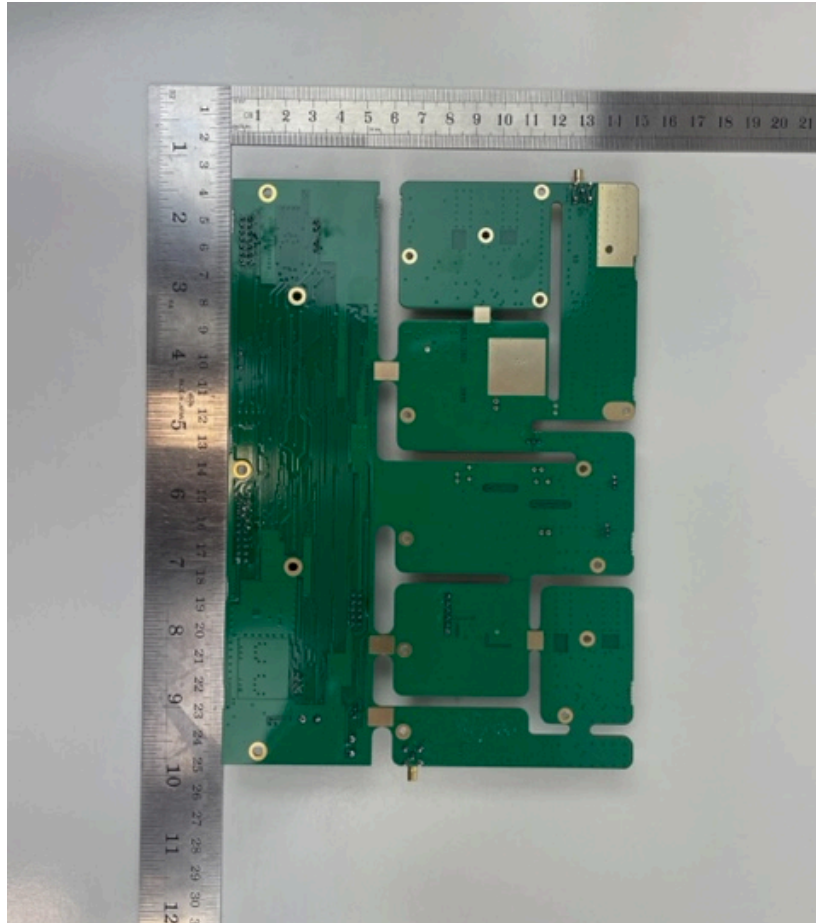


Photo 21 – Main RF Controller PCB Assembly Bottom View

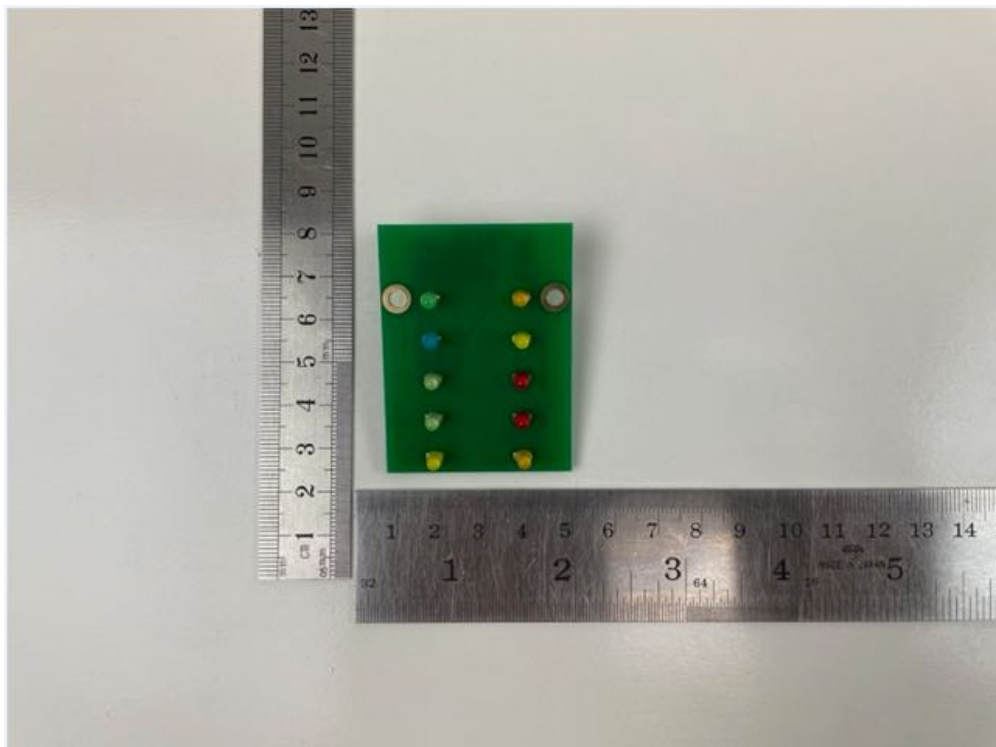


Photo 22 – Controller LED PCB Assembly Top View

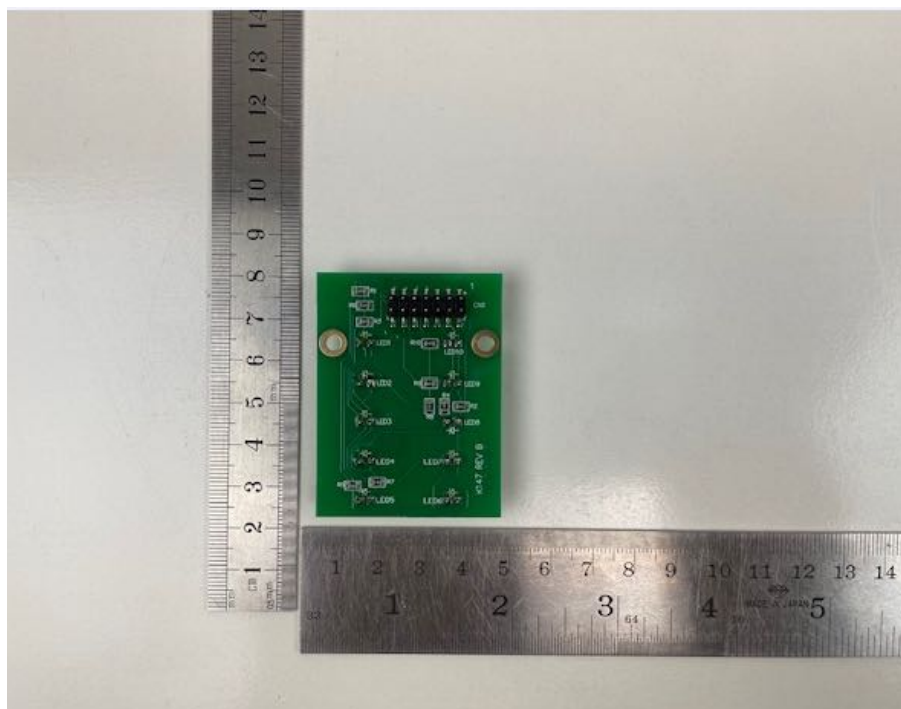


Photo 23 – Controller LED PCB Assembly Bottom View



Photo 24 – PA Module Top View

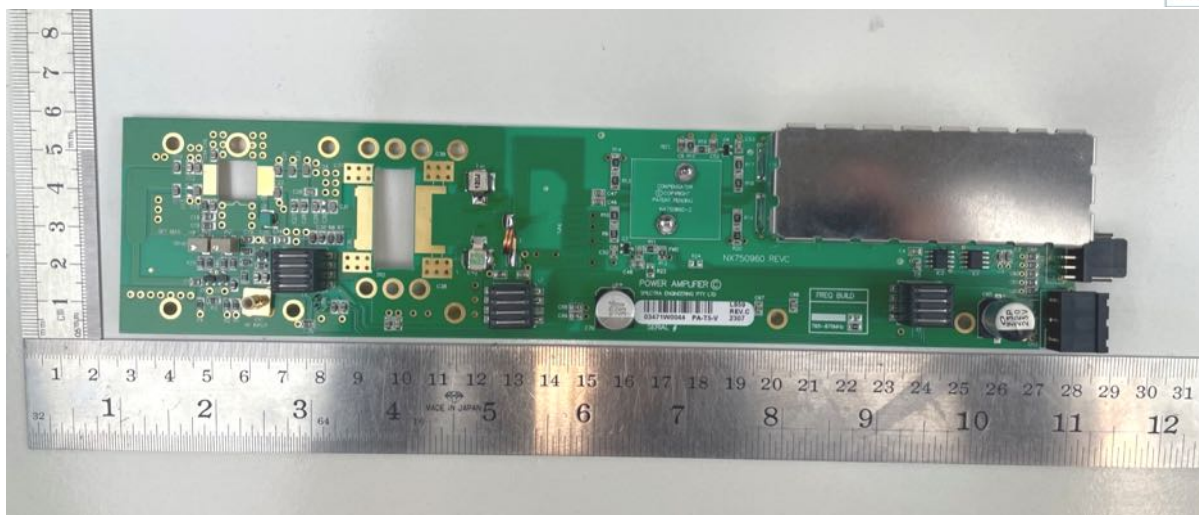


Photo 25 – PA PCB Assembly Top View

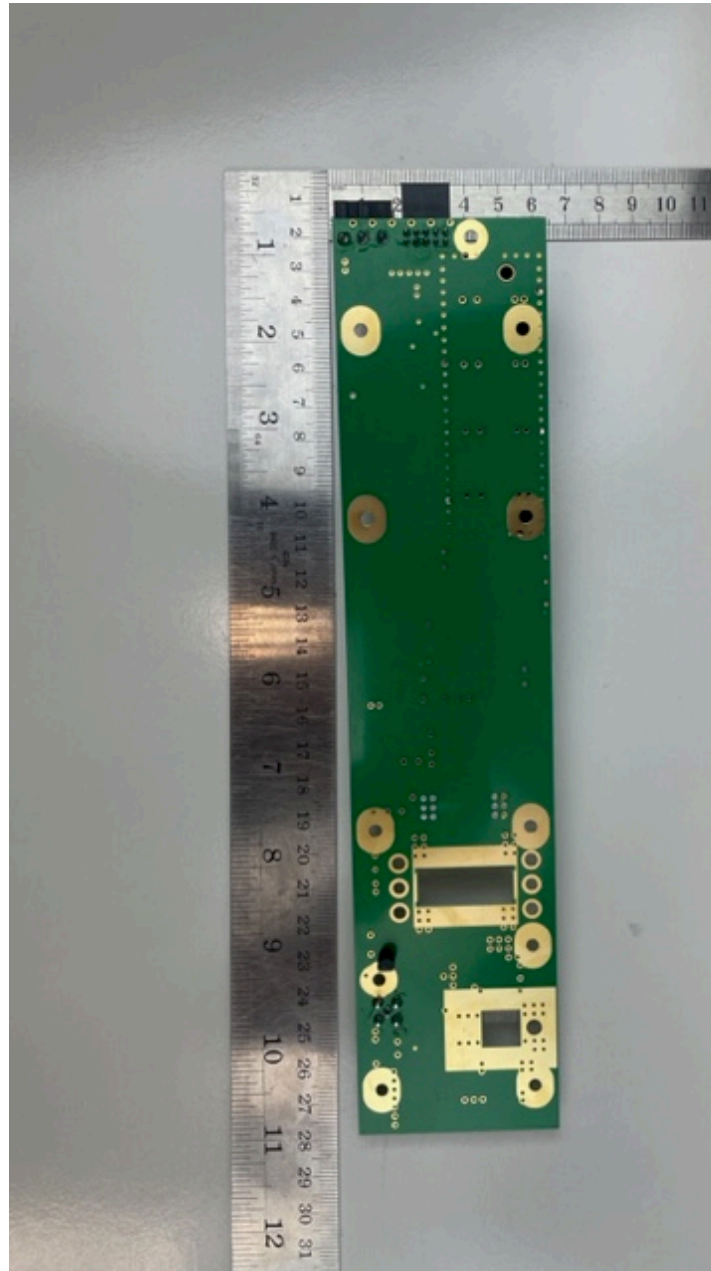


Photo 26 – PA PCB Assembly Bottom View

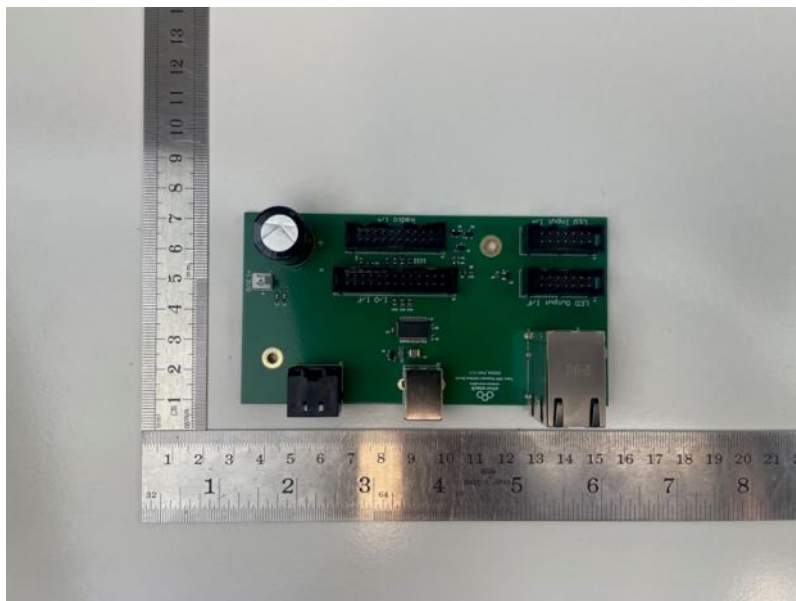


Photo 27 – Rear Interface PCB Assembly Top View

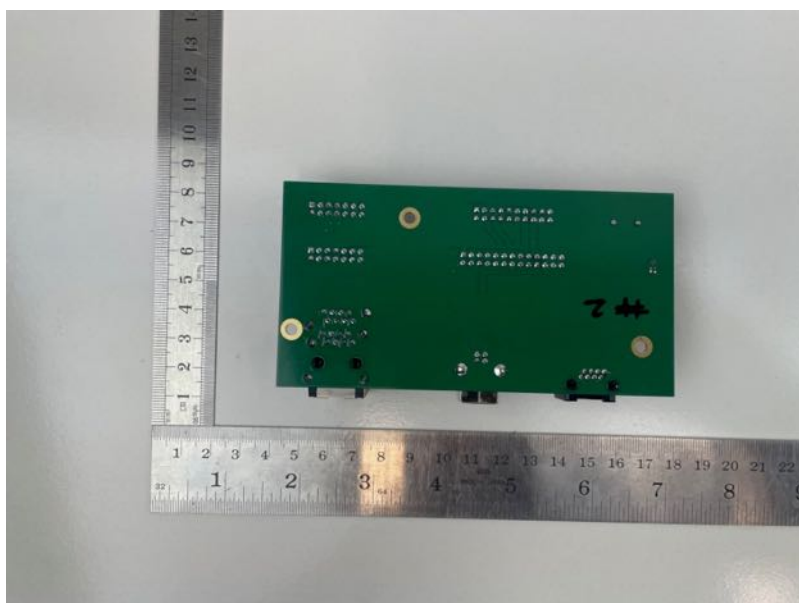


Photo 28 – Rear Interface PCB Assembly Bottom View

End of Document.