

**Test Plot 1#: GSM 850\_Head Left Cheek\_Middle****DUT: 2G Feature phone; Type: S281; Serial: 18010805021**

Communication System: Generic GSM; Frequency: 836.6 MHz; Duty Cycle: 1:8  
Medium parameters used:  $f = 836.6$  MHz;  $\sigma = 0.894$  S/m;  $\epsilon_r = 42.548$ ;  $\rho = 1000$  kg/m<sup>3</sup> ;  
Phantom section: Left Section

DASY5 Configuration:

- Probe: EX3DV4 - SN7441; ConvF(9.98, 9.98, 9.98); Calibrated: 2017/11/2;
- Sensor-Surface: 1.4mm (Mechanical Surface Detection)
- Electronics: DAE4 Sn1459; Calibrated: 2017/9/15
- Phantom: SAM (30deg probe tilt) with CRP v5.0\_20150321; Type: QD000P40CD; Serial: TP:1874
- Measurement SW: DASY52, Version 52.8 (8);

**Area Scan (51x101x1):** Interpolated grid: dx=1.500 mm, dy=1.500 mm

Maximum value of SAR (interpolated) = 0.766 W/kg

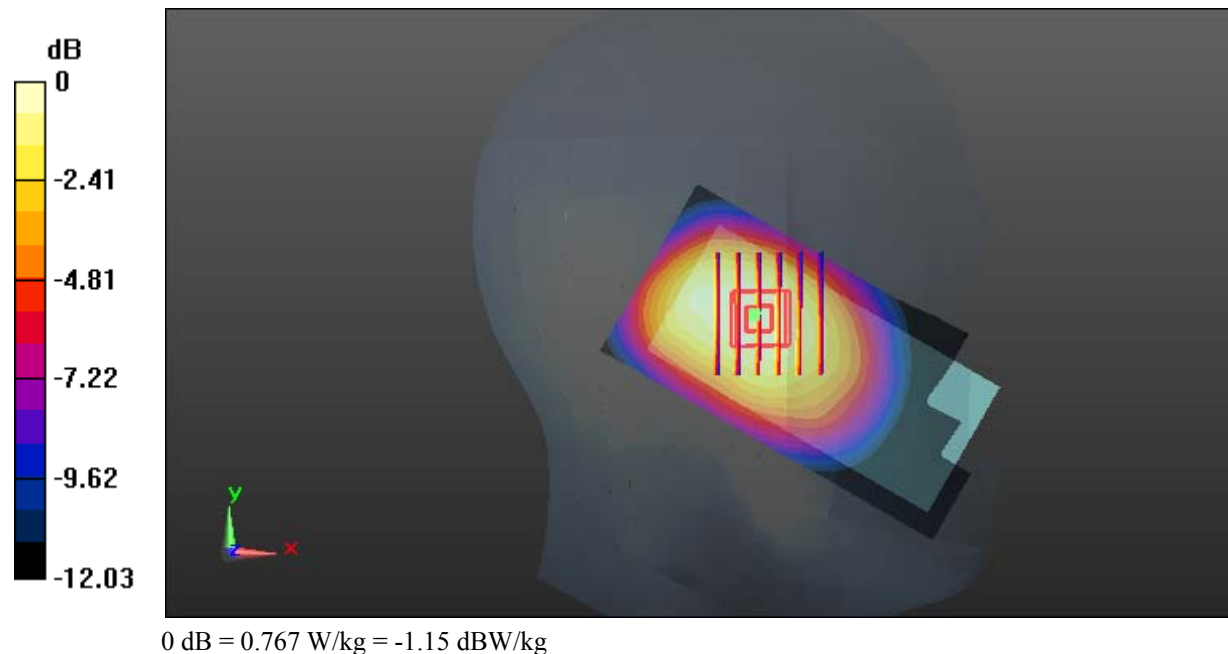
**Zoom Scan (6x7x7)/Cube 0:** Measurement grid: dx=8mm, dy=8mm, dz=5mm

Reference Value = 24.15 V/m; Power Drift = -0.06 dB

Peak SAR (extrapolated) = 0.846 W/kg

**SAR(1 g) = 0.639 W/kg; SAR(10 g) = 0.467 W/kg**

Maximum value of SAR (measured) = 0.767 W/kg



**Test Plot 2#: GSM 850\_Head Left Tilt\_Middle****DUT: 2G Feature phone; Type: S281; Serial: 18010805021**

Communication System: Generic GSM; Frequency: 836.6 MHz; Duty Cycle: 1:8  
Medium parameters used:  $f = 836.6$  MHz;  $\sigma = 0.894$  S/m;  $\epsilon_r = 42.548$ ;  $\rho = 1000$  kg/m<sup>3</sup> ;  
Phantom section: Left Section

DASY5 Configuration:

- Probe: EX3DV4 - SN7441; ConvF(9.98, 9.98, 9.98); Calibrated: 2017/11/2;
- Sensor-Surface: 1.4mm (Mechanical Surface Detection)
- Electronics: DAE4 Sn1459; Calibrated: 2017/9/15
- Phantom: SAM (30deg probe tilt) with CRP v5.0\_20150321; Type: QD000P40CD; Serial: TP:1874
- Measurement SW: DASY52, Version 52.8 (8);

**Area Scan (51x101x1):** Interpolated grid: dx=1.500 mm, dy=1.500 mm

Maximum value of SAR (interpolated) = 0.578 W/kg

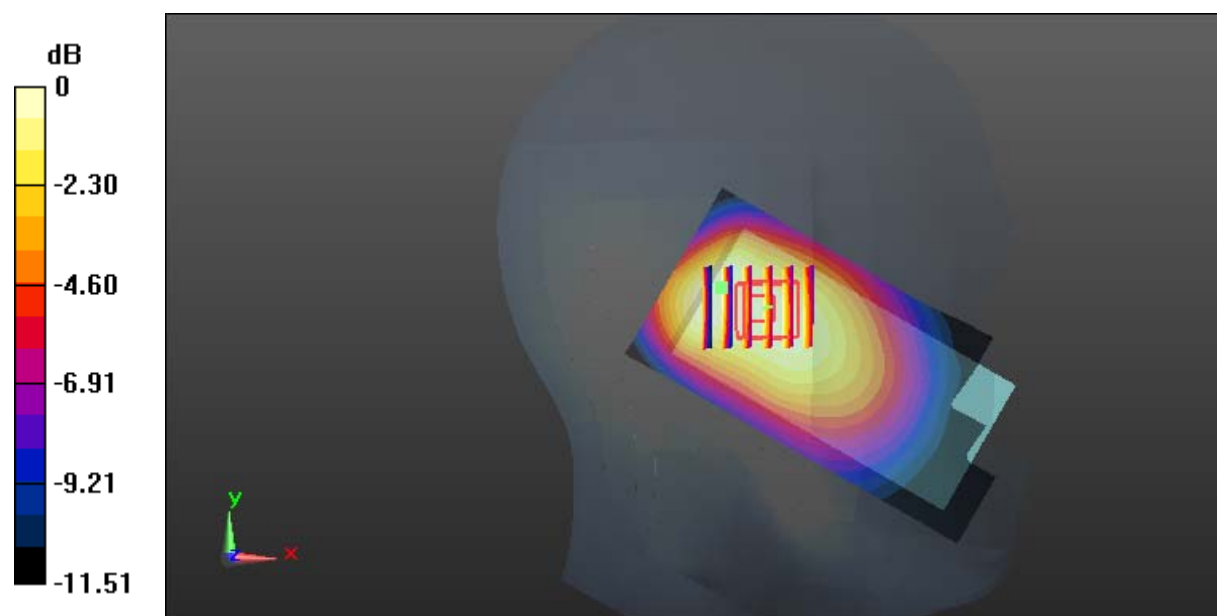
**Zoom Scan (6x5x7)/Cube 0:** Measurement grid: dx=8mm, dy=8mm, dz=5mm

Reference Value = 21.60 V/m; Power Drift = 0.01 dB

Peak SAR (extrapolated) = 0.579 W/kg

**SAR(1 g) = 0.409 W/kg; SAR(10 g) = 0.300 W/kg**

Maximum value of SAR (measured) = 0.499 W/kg



0 dB = 0.499 W/kg = -3.02 dBW/kg

**Test Plot 3#: GSM 850\_Head Right Cheek\_Middle****DUT: 2G Feature phone; Type: S281; Serial: 18010805021**

Communication System: Generic GSM; Frequency: 836.6 MHz; Duty Cycle: 1:8  
Medium parameters used:  $f = 836.6$  MHz;  $\sigma = 0.894$  S/m;  $\epsilon_r = 42.548$ ;  $\rho = 1000$  kg/m<sup>3</sup> ;  
Phantom section: Right Section

DASY5 Configuration:

- Probe: EX3DV4 - SN7441; ConvF(9.98, 9.98, 9.98); Calibrated: 2017/11/2;
- Sensor-Surface: 1.4mm (Mechanical Surface Detection)
- Electronics: DAE4 Sn1459; Calibrated: 2017/9/15
- Phantom: SAM (30deg probe tilt) with CRP v5.0\_20150321; Type: QD000P40CD; Serial: TP:1874
- Measurement SW: DASY52, Version 52.8 (8);

**Area Scan (51x101x1):** Interpolated grid: dx=1.500 mm, dy=1.500 mm

Maximum value of SAR (interpolated) = 0.743 W/kg

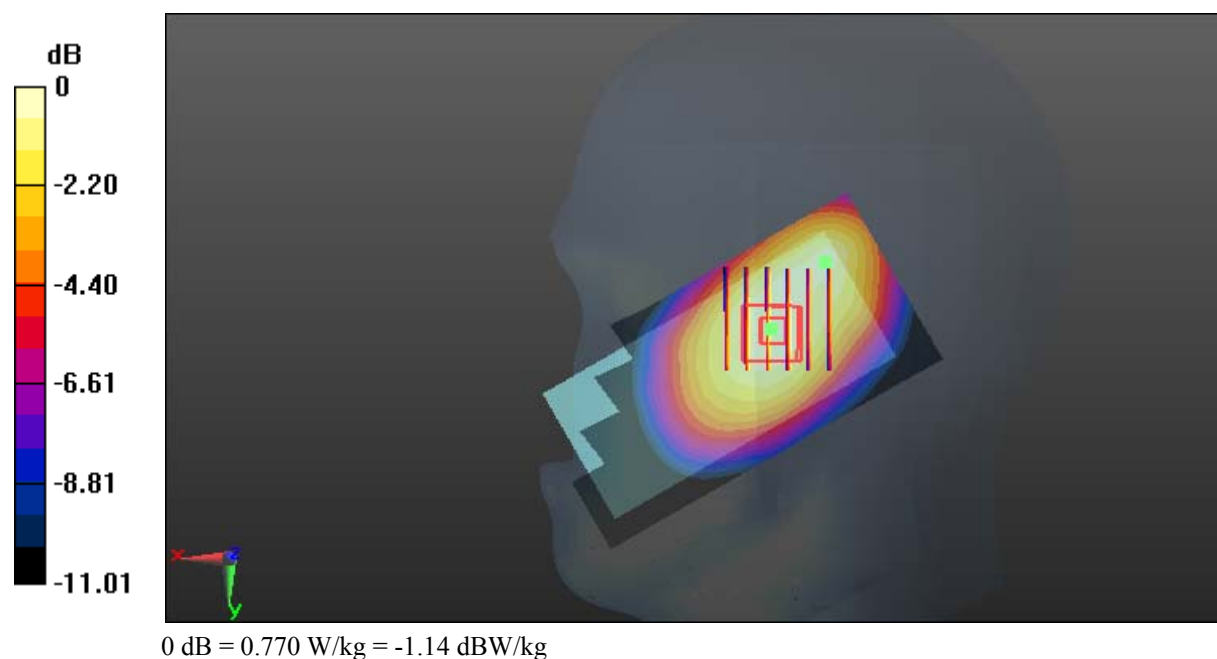
**Zoom Scan (6x6x7)/Cube 0:** Measurement grid: dx=8mm, dy=8mm, dz=5mm

Reference Value = 22.29 V/m; Power Drift = -0.15 dB

Peak SAR (extrapolated) = 0.834 W/kg

**SAR(1 g) = 0.627 W/kg; SAR(10 g) = 0.463 W/kg**

Maximum value of SAR (measured) = 0.770 W/kg



**Test Plot 4#: GSM 850\_Head Right Tilt\_Middle****DUT: 2G Feature phone; Type: S281; Serial: 18010805021**

Communication System: Generic GSM; Frequency: 836.6 MHz; Duty Cycle: 1:8  
Medium parameters used:  $f = 836.6$  MHz;  $\sigma = 0.894$  S/m;  $\epsilon_r = 42.548$ ;  $\rho = 1000$  kg/m<sup>3</sup> ;  
Phantom section: Right Section

DASY5 Configuration:

- Probe: EX3DV4 - SN7441; ConvF(9.98, 9.98, 9.98); Calibrated: 2017/11/2;
- Sensor-Surface: 1.4mm (Mechanical Surface Detection)
- Electronics: DAE4 Sn1459; Calibrated: 2017/9/15
- Phantom: SAM (30deg probe tilt) with CRP v5.0\_20150321; Type: QD000P40CD; Serial: TP:1874
- Measurement SW: DASY52, Version 52.8 (8);

**Area Scan (51x101x1):** Interpolated grid: dx=1.500 mm, dy=1.500 mm

Maximum value of SAR (interpolated) = 0.586 W/kg

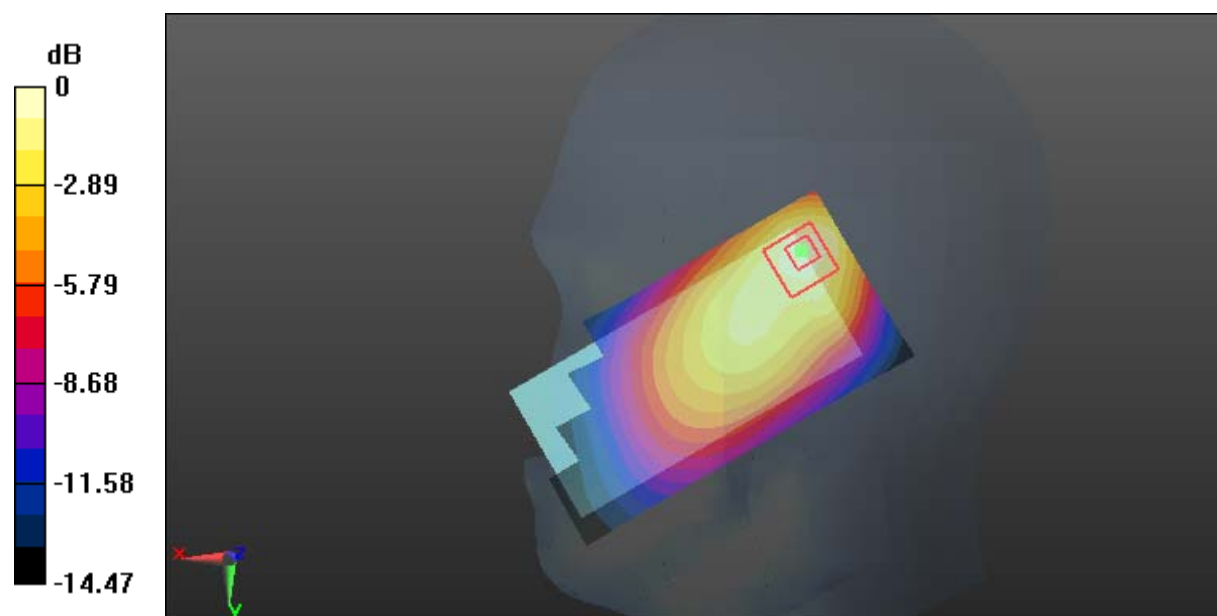
**Zoom Scan (8x9x7)/Cube 0:** Measurement grid: dx=8mm, dy=8mm, dz=5mm

Reference Value = 19.00 V/m; Power Drift = 0.07 dB

Peak SAR (extrapolated) = 0.651 W/kg

**SAR(1 g) = 0.371 W/kg; SAR(10 g) = 0.258 W/kg**

Maximum value of SAR (measured) = 0.541 W/kg



0 dB = 0.541 W/kg = -2.67 dBW/kg

**Test Plot 5#: GSM 850\_Body Worn Back\_Low****DUT: 2G Feature phone; Type: S281; Serial: 18010805021**

Communication System: Generic GSM; Frequency: 824.2 MHz; Duty Cycle: 1:8  
Medium parameters used:  $f = 824.2$  MHz;  $\sigma = 0.984$  S/m;  $\epsilon_r = 54.243$ ;  $\rho = 1000$  kg/m<sup>3</sup> ;  
Phantom section: Flat Section

DASY5 Configuration:

- Probe: EX3DV4 - SN7441; ConvF(9.95, 9.95, 9.95); Calibrated: 2017/11/2;
- Sensor-Surface: 1.4mm (Mechanical Surface Detection)
- Electronics: DAE4 Sn1459; Calibrated: 2017/9/15
- Phantom: SAM (30deg probe tilt) with CRP v5.0\_20150321; Type: QD000P40CD; Serial: TP:1874
- Measurement SW: DASY52, Version 52.8 (8);

**Area Scan (61x111x1):** Interpolated grid: dx=1.500 mm, dy=1.500 mm

Maximum value of SAR (interpolated) = 1.03 W/kg

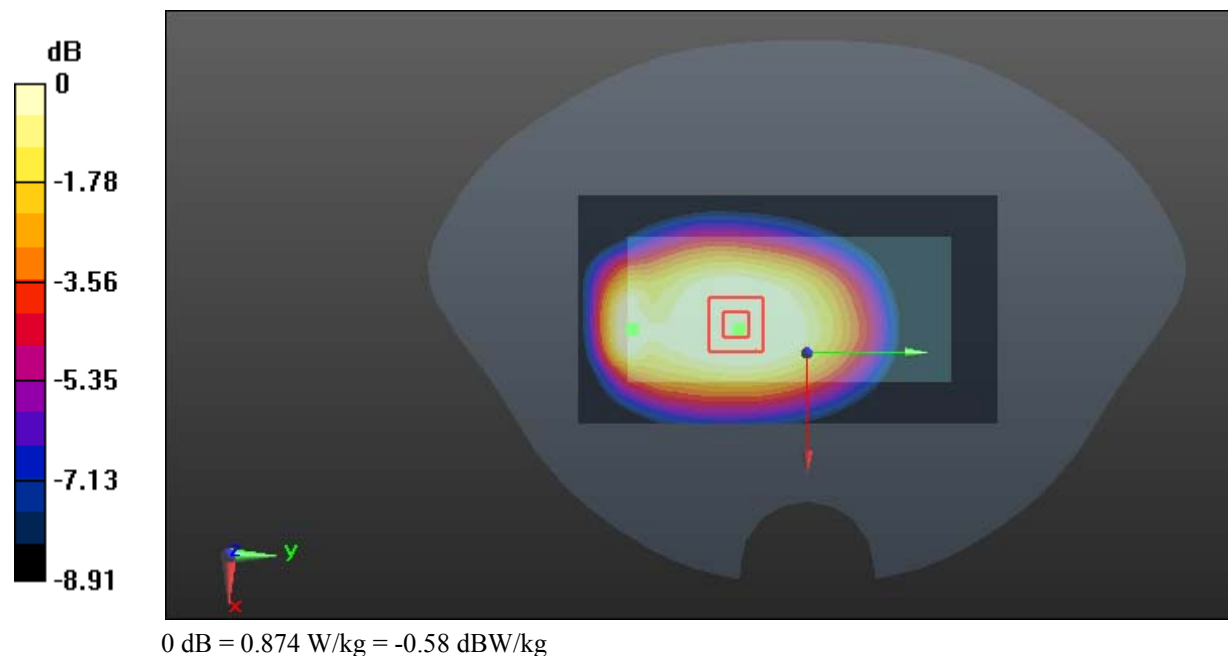
**Zoom Scan (5x5x7)/Cube 0:** Measurement grid: dx=8mm, dy=8mm, dz=5mm

Reference Value = 25.79 V/m; Power Drift = -0.03 dB

Peak SAR (extrapolated) = 1.06 W/kg

**SAR(1 g) = 0.829 W/kg; SAR(10 g) = 0.608 W/kg**

Maximum value of SAR (measured) = 0.874 W/kg



**Test Plot 6#: GSM 850\_Body Worn Back\_Middle****DUT: 2G Feature phone; Type: S281; Serial: 18010805021**

Communication System: Generic GSM; Frequency: 836.6 MHz; Duty Cycle: 1:8  
Medium parameters used:  $f = 836.6$  MHz;  $\sigma = 1$  S/m;  $\epsilon_r = 54.684$ ;  $\rho = 1000$  kg/m<sup>3</sup> ;  
Phantom section: Flat Section

DASY5 Configuration:

- Probe: EX3DV4 - SN7441; ConvF(9.95, 9.95, 9.95); Calibrated: 2017/11/2;
- Sensor-Surface: 1.4mm (Mechanical Surface Detection)
- Electronics: DAE4 Sn1459; Calibrated: 2017/9/15
- Phantom: SAM (30deg probe tilt) with CRP v5.0\_20150321; Type: QD000P40CD; Serial: TP:1874
- Measurement SW: DASY52, Version 52.8 (8);

**Area Scan (61x111x1):** Interpolated grid: dx=1.500 mm, dy=1.500 mm

Maximum value of SAR (interpolated) = 1.15 W/kg

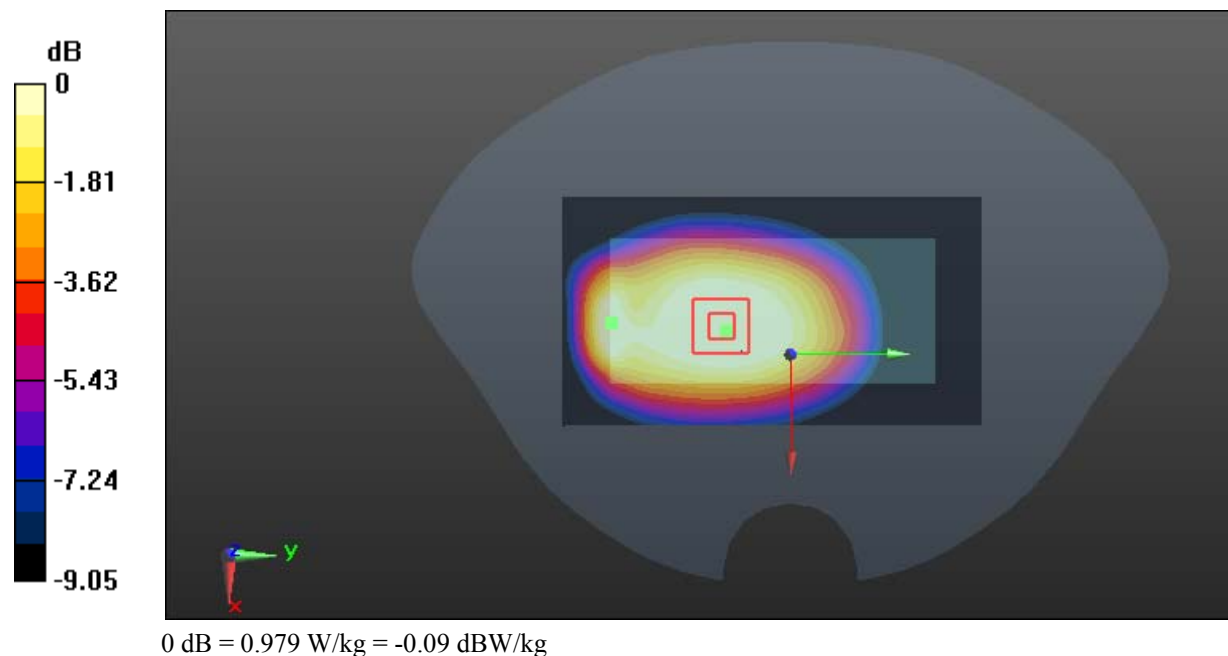
**Zoom Scan (5x5x7)/Cube 0:** Measurement grid: dx=8mm, dy=8mm, dz=5mm

Reference Value = 26.95 V/m; Power Drift = 0.01 dB

Peak SAR (extrapolated) = 1.21 W/kg

**SAR(1 g) = 0.930 W/kg; SAR(10 g) = 0.681 W/kg**

Maximum value of SAR (measured) = 0.979 W/kg



**Test Plot 7#: GSM 850\_Body Worn Back\_High****DUT: 2G Feature phone; Type: S281; Serial: 18010805021**

Communication System: Generic GSM; Frequency: 848.8 MHz; Duty Cycle: 1:8  
Medium parameters used:  $f = 848.8$  MHz;  $\sigma = 0.988$  S/m;  $\epsilon_r = 54.638$ ;  $\rho = 1000$  kg/m<sup>3</sup> ;  
Phantom section: Flat Section

DASY5 Configuration:

- Probe: EX3DV4 - SN7441; ConvF(9.95, 9.95, 9.95); Calibrated: 2017/11/2;
- Sensor-Surface: 1.4mm (Mechanical Surface Detection)
- Electronics: DAE4 Sn1459; Calibrated: 2017/9/15
- Phantom: SAM (30deg probe tilt) with CRP v5.0\_20150321; Type: QD000P40CD; Serial: TP:1874
- Measurement SW: DASY52, Version 52.8 (8);

**Area Scan (61x111x1):** Interpolated grid: dx=1.500 mm, dy=1.500 mm

Maximum value of SAR (interpolated) = 1.05 W/kg

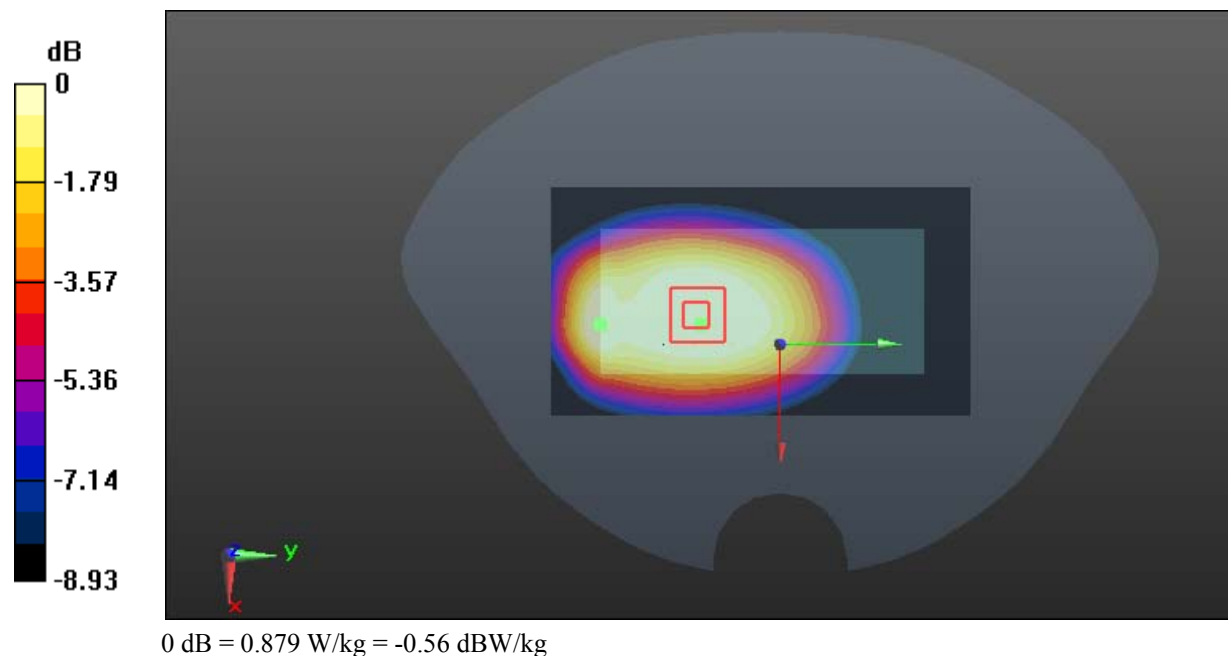
**Zoom Scan (5x5x7)/Cube 0:** Measurement grid: dx=8mm, dy=8mm, dz=5mm

Reference Value = 24.18 V/m; Power Drift = -0.03 dB

Peak SAR (extrapolated) = 1.08 W/kg

**SAR(1 g) = 0.845 W/kg; SAR(10 g) = 0.620 W/kg**

Maximum value of SAR (measured) = 0.879 W/kg



**Test Plot 8#: GSM 850\_Body Back\_Low****DUT: 2G Feature phone; Type: S281; Serial: 18010805021**

Communication System: Generic GPRS-4 slots; Frequency: 824.2 MHz; Duty Cycle: 1:2  
Medium parameters used:  $f = 824.2$  MHz;  $\sigma = 0.984$  S/m;  $\epsilon_r = 54.243$ ;  $\rho = 1000$  kg/m<sup>3</sup> ;  
Phantom section: Flat Section

DASY5 Configuration:

- Probe: EX3DV4 - SN7441; ConvF(9.95, 9.95, 9.95); Calibrated: 2017/11/2;
- Sensor-Surface: 1.4mm (Mechanical Surface Detection)
- Electronics: DAE4 Sn1459; Calibrated: 2017/9/15
- Phantom: SAM (30deg probe tilt) with CRP v5.0\_20150321; Type: QD000P40CD; Serial: TP:1874
- Measurement SW: DASY52, Version 52.8 (8);

**Area Scan (61x111x1):** Interpolated grid: dx=1.500 mm, dy=1.500 mm

Maximum value of SAR (interpolated) = 1.28 W/kg

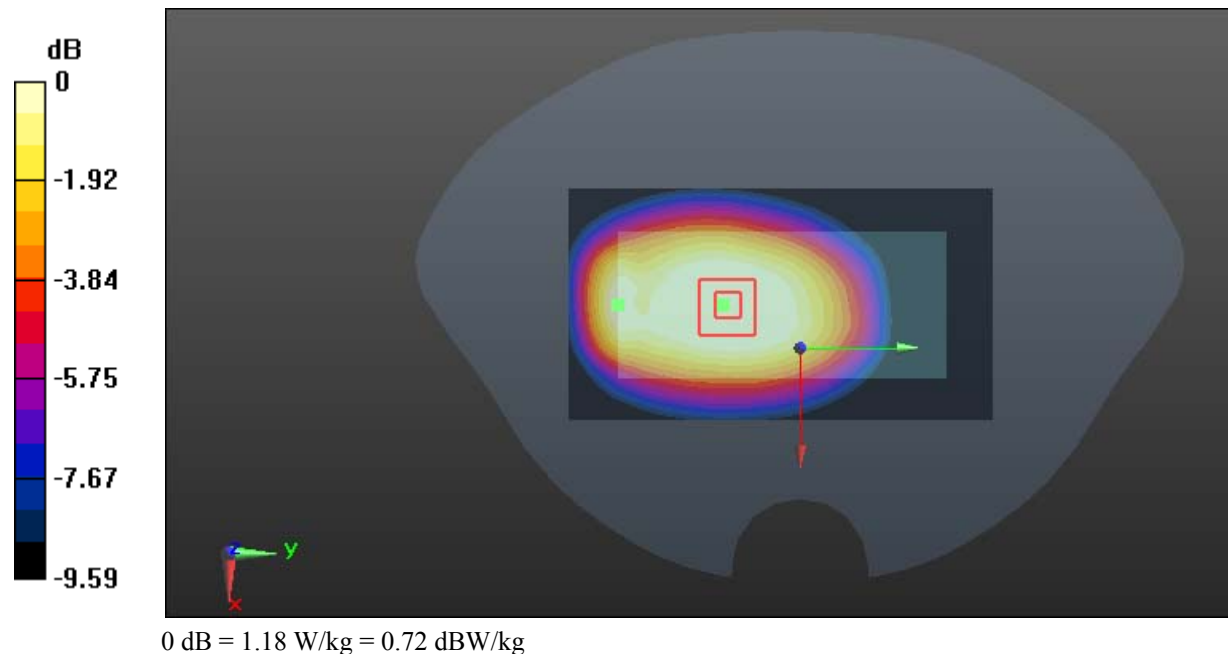
**Zoom Scan (5x5x7)/Cube 0:** Measurement grid: dx=8mm, dy=8mm, dz=5mm

Reference Value = 29.99 V/m; Power Drift = -0.10 dB

Peak SAR (extrapolated) = 1.47 W/kg

**SAR(1 g) = 1.11 W/kg; SAR(10 g) = 0.811 W/kg**

Maximum value of SAR (measured) = 1.18 W/kg





**Test Plot 9#: GSM 850\_Body Back\_Middle****DUT: 2G Feature phone; Type: S281; Serial: 18010805021**

Communication System: Generic GPRS-4 slots; Frequency: 836.6 MHz; Duty Cycle: 1:2  
Medium parameters used:  $f = 836.6$  MHz;  $\sigma = 1$  S/m;  $\epsilon_r = 54.684$ ;  $\rho = 1000$  kg/m<sup>3</sup> ;  
Phantom section: Flat Section

DASY5 Configuration:

- Probe: EX3DV4 - SN7441; ConvF(9.95, 9.95, 9.95); Calibrated: 2017/11/2;
- Sensor-Surface: 1.4mm (Mechanical Surface Detection)
- Electronics: DAE4 Sn1459; Calibrated: 2017/9/15
- Phantom: SAM (30deg probe tilt) with CRP v5.0\_20150321; Type: QD000P40CD; Serial: TP:1874
- Measurement SW: DASY52, Version 52.8 (8);

**Area Scan (61x111x1):** Interpolated grid: dx=1.500 mm, dy=1.500 mm

Maximum value of SAR (interpolated) = 1.28 W/kg

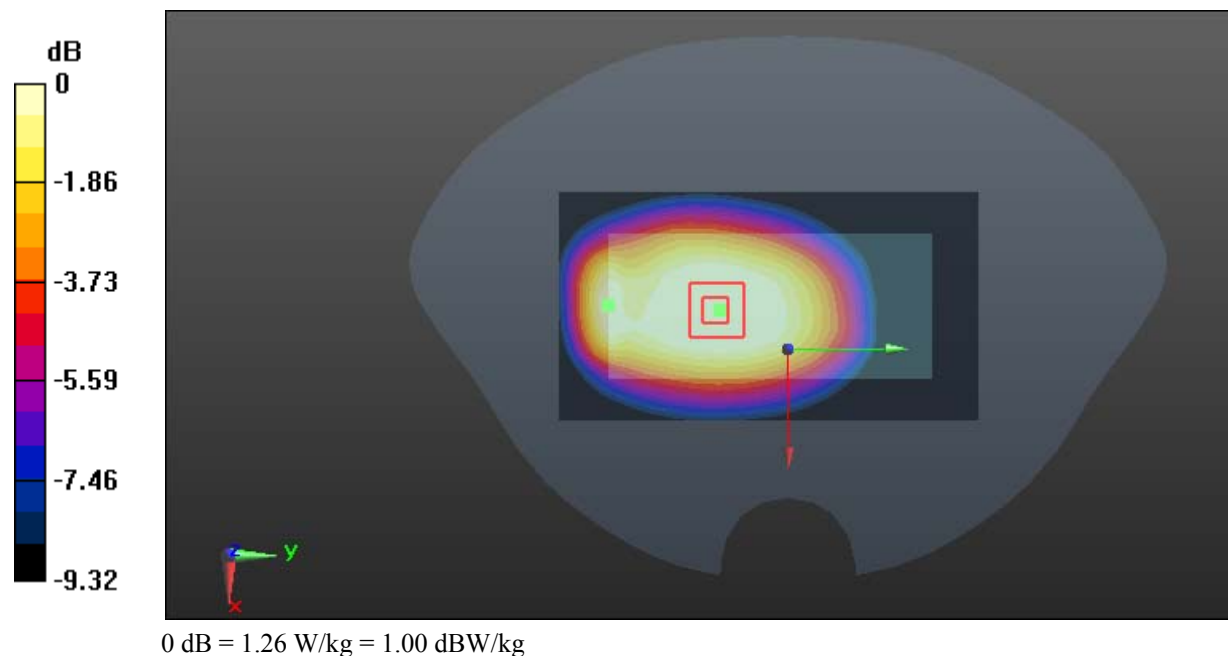
**Zoom Scan (5x5x7)/Cube 0:** Measurement grid: dx=8mm, dy=8mm, dz=5mm

Reference Value = 31.21 V/m; Power Drift = -0.14 dB

Peak SAR (extrapolated) = 1.54 W/kg

**SAR(1 g) = 1.19 W/kg; SAR(10 g) = 0.863 W/kg**

Maximum value of SAR (measured) = 1.26 W/kg



**Test Plot 10#: GSM 850\_Body Back\_High****DUT: 2G Feature phone; Type: S281; Serial: 18010805021**

Communication System: Generic GPRS-4 slots; Frequency: 848.8 MHz; Duty Cycle: 1:2  
Medium parameters used:  $f = 848.8$  MHz;  $\sigma = 0.988$  S/m;  $\epsilon_r = 54.638$ ;  $\rho = 1000$  kg/m<sup>3</sup> ;  
Phantom section: Flat Section

DASY5 Configuration:

- Probe: EX3DV4 - SN7441; ConvF(9.95, 9.95, 9.95); Calibrated: 2017/11/2;
- Sensor-Surface: 1.4mm (Mechanical Surface Detection)
- Electronics: DAE4 Sn1459; Calibrated: 2017/9/15
- Phantom: SAM (30deg probe tilt) with CRP v5.0\_20150321; Type: QD000P40CD; Serial: TP:1874
- Measurement SW: DASY52, Version 52.8 (8);

**Area Scan (61x111x1):** Interpolated grid: dx=1.500 mm, dy=1.500 mm

Maximum value of SAR (interpolated) = 1.19 W/kg

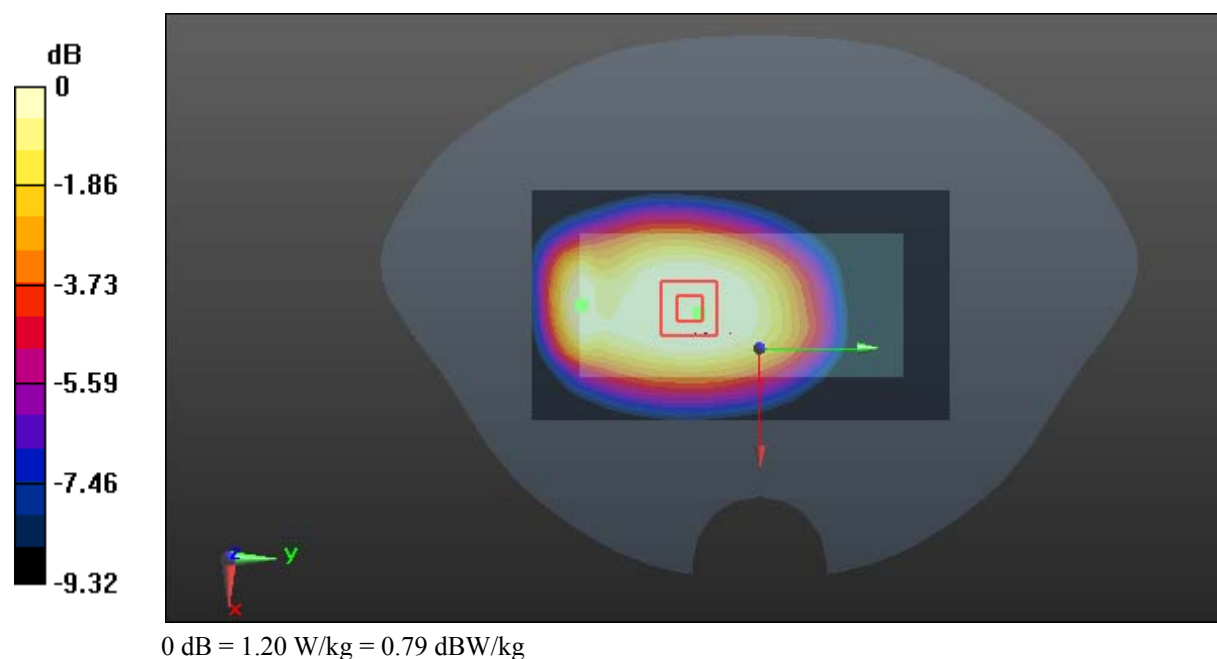
**Zoom Scan (5x5x7)/Cube 0:** Measurement grid: dx=8mm, dy=8mm, dz=5mm

Reference Value = 30.32 V/m; Power Drift = -0.02 dB

Peak SAR (extrapolated) = 1.47 W/kg

**SAR(1 g) = 1.14 W/kg; SAR(10 g) = 0.831 W/kg**

Maximum value of SAR (measured) = 1.20 W/kg



**Test Plot 11#: GSM 1900\_Head Left Cheek\_Middle****DUT: 2G Feature phone; Type: S281; Serial: 18010805021**

Communication System: Generic GSM; Frequency: 1880 MHz; Duty Cycle: 1:8  
Medium parameters used:  $f = 1880$  MHz;  $\sigma = 1.392$  S/m;  $\epsilon_r = 39.011$ ;  $\rho = 1000$  kg/m<sup>3</sup> ;  
Phantom section: Left Section

DASY5 Configuration:

- Probe: EX3DV4 - SN7441; ConvF(7.9, 7.9, 7.9); Calibrated: 2017/11/2;
- Sensor-Surface: 1.4mm (Mechanical Surface Detection)
- Electronics: DAE4 Sn1459; Calibrated: 2017/9/15
- Phantom: SAM (30deg probe tilt) with CRP v5.0\_20150321; Type: QD000P40CD; Serial: TP:1874
- Measurement SW: DASY52, Version 52.8 (8);

**Area Scan (51x101x1):** Interpolated grid: dx=1.500 mm, dy=1.500 mm

Maximum value of SAR (interpolated) = 0.849 W/kg

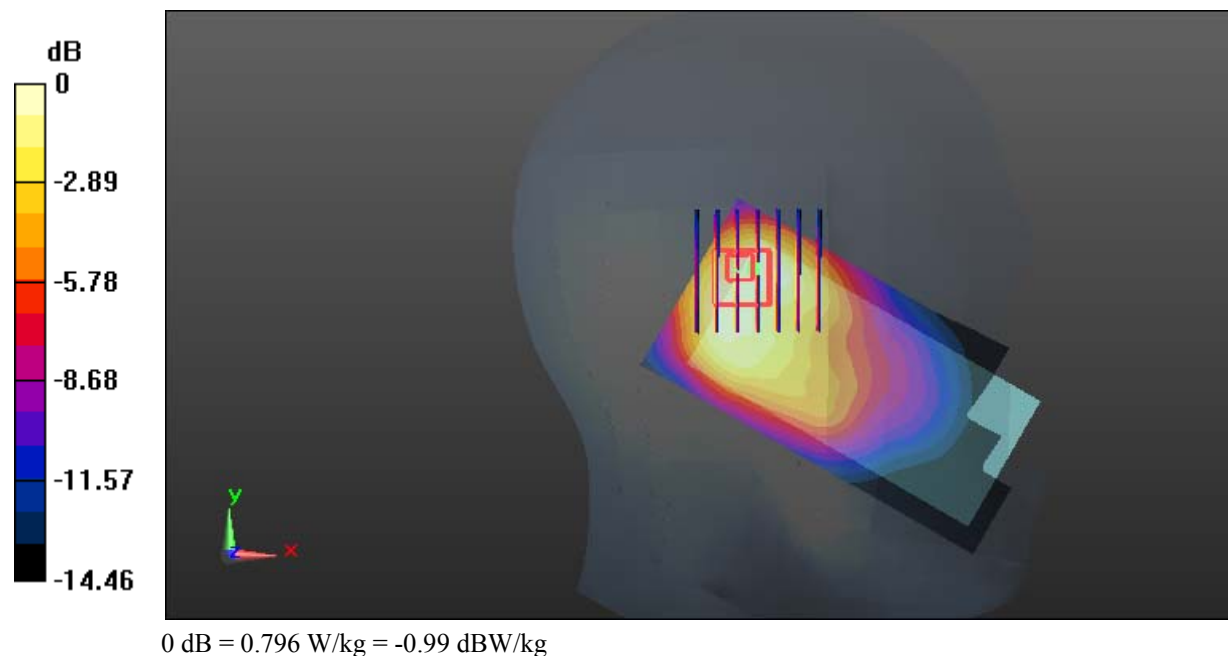
**Zoom Scan (7x7x7)/Cube 0:** Measurement grid: dx=8mm, dy=8mm, dz=5mm

Reference Value = 17.40 V/m; Power Drift = 0.15 dB

Peak SAR (extrapolated) = 0.950 W/kg

**SAR(1 g) = 0.529 W/kg; SAR(10 g) = 0.302 W/kg**

Maximum value of SAR (measured) = 0.796 W/kg



**Test Plot 12#: GSM 1900\_Head Left Tilt\_Middle****DUT: 2G Feature phone; Type: S281; Serial: 18010805021**

Communication System: Generic GSM; Frequency: 1880 MHz; Duty Cycle: 1:8  
Medium parameters used:  $f = 1880$  MHz;  $\sigma = 1.392$  S/m;  $\epsilon_r = 39.011$ ;  $\rho = 1000$  kg/m<sup>3</sup> ;  
Phantom section: Left Section

DASY5 Configuration:

- Probe: EX3DV4 - SN7441; ConvF(7.9, 7.9, 7.9); Calibrated: 2017/11/2;
- Sensor-Surface: 1.4mm (Mechanical Surface Detection)
- Electronics: DAE4 Sn1459; Calibrated: 2017/9/15
- Phantom: SAM (30deg probe tilt) with CRP v5.0\_20150321; Type: QD000P40CD; Serial: TP:1874
- Measurement SW: DASY52, Version 52.8 (8);

**Area Scan (51x101x1):** Interpolated grid: dx=1.500 mm, dy=1.500 mm

Maximum value of SAR (interpolated) = 1.09 W/kg

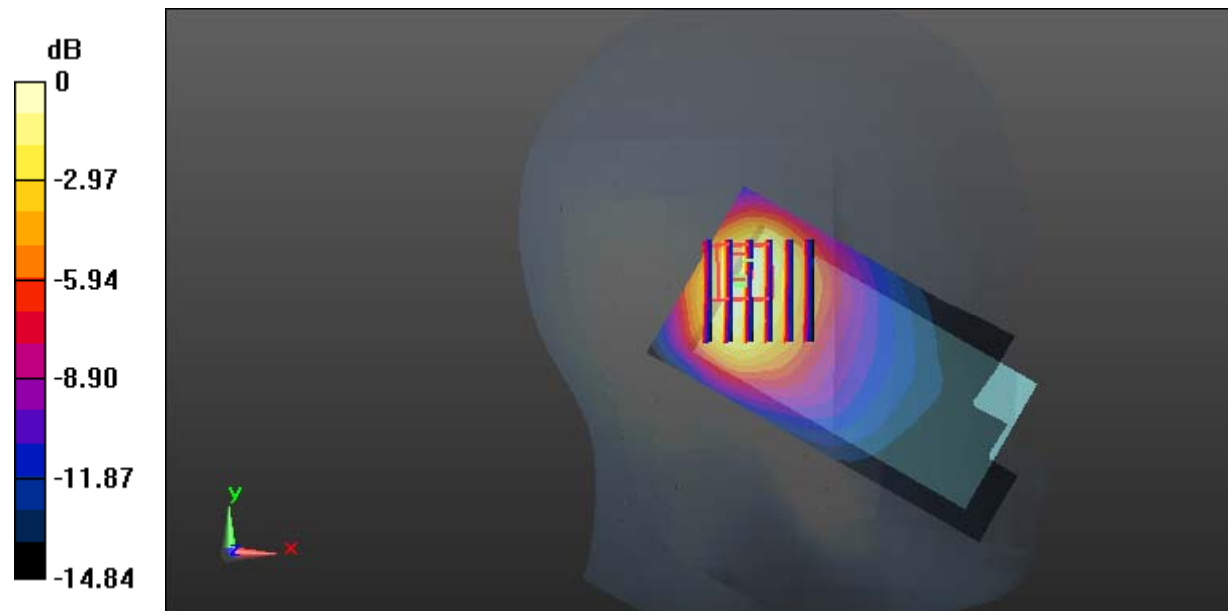
**Zoom Scan (6x6x7)/Cube 0:** Measurement grid: dx=8mm, dy=8mm, dz=5mm

Reference Value = 19.90 V/m; Power Drift = -0.06 dB

Peak SAR (extrapolated) = 1.20 W/kg

**SAR(1 g) = 0.671 W/kg; SAR(10 g) = 0.373 W/kg**

Maximum value of SAR (measured) = 1.01 W/kg



0 dB = 1.01 W/kg = 0.04 dBW/kg

**Test Plot 13#: GSM 1900\_Head Right Cheek\_Middle****DUT: 2G Feature phone; Type: S281; Serial: 18010805021**

Communication System: Generic GSM; Frequency: 1880 MHz; Duty Cycle: 1:8  
Medium parameters used:  $f = 1880$  MHz;  $\sigma = 1.392$  S/m;  $\epsilon_r = 39.011$ ;  $\rho = 1000$  kg/m<sup>3</sup> ;  
Phantom section: Right Section

DASY5 Configuration:

- Probe: EX3DV4 - SN7441; ConvF(7.9, 7.9, 7.9); Calibrated: 2017/11/2;
- Sensor-Surface: 1.4mm (Mechanical Surface Detection)
- Electronics: DAE4 Sn1459; Calibrated: 2017/9/15
- Phantom: SAM (30deg probe tilt) with CRP v5.0\_20150321; Type: QD000P40CD; Serial: TP:1874
- Measurement SW: DASY52, Version 52.8 (8);

**Area Scan (51x101x1):** Interpolated grid: dx=1.500 mm, dy=1.500 mm

Maximum value of SAR (interpolated) = 1.16 W/kg

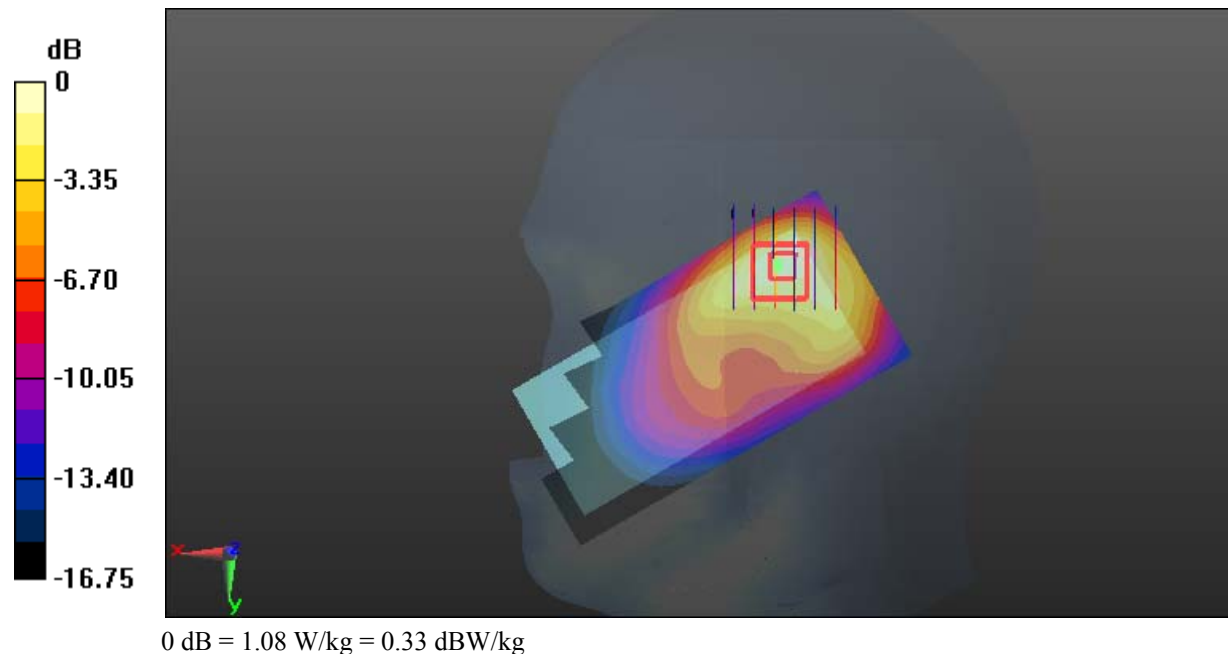
**Zoom Scan (6x6x7)/Cube 0:** Measurement grid: dx=8mm, dy=8mm, dz=5mm

Reference Value = 16.23 V/m; Power Drift = 0.07 dB

Peak SAR (extrapolated) = 1.42 W/kg

**SAR(1 g) = 0.726 W/kg; SAR(10 g) = 0.387 W/kg**

Maximum value of SAR (measured) = 1.08 W/kg



**Test Plot 14#: GSM 1900\_Head Right Tilt\_Middle****DUT: 2G Feature phone; Type: S281; Serial: 18010805021**

Communication System: Generic GSM; Frequency: 1880 MHz; Duty Cycle: 1:8  
Medium parameters used:  $f = 1880$  MHz;  $\sigma = 1.392$  S/m;  $\epsilon_r = 39.011$ ;  $\rho = 1000$  kg/m<sup>3</sup> ;  
Phantom section: Right Section

DASY5 Configuration:

- Probe: EX3DV4 - SN7441; ConvF(7.9, 7.9, 7.9); Calibrated: 2017/11/2;
- Sensor-Surface: 1.4mm (Mechanical Surface Detection)
- Electronics: DAE4 Sn1459; Calibrated: 2017/9/15
- Phantom: SAM (30deg probe tilt) with CRP v5.0\_20150321; Type: QD000P40CD; Serial: TP:1874
- Measurement SW: DASY52, Version 52.8 (8);

**Area Scan (51x101x1):** Interpolated grid: dx=1.500 mm, dy=1.500 mm

Maximum value of SAR (interpolated) = 1.15 W/kg

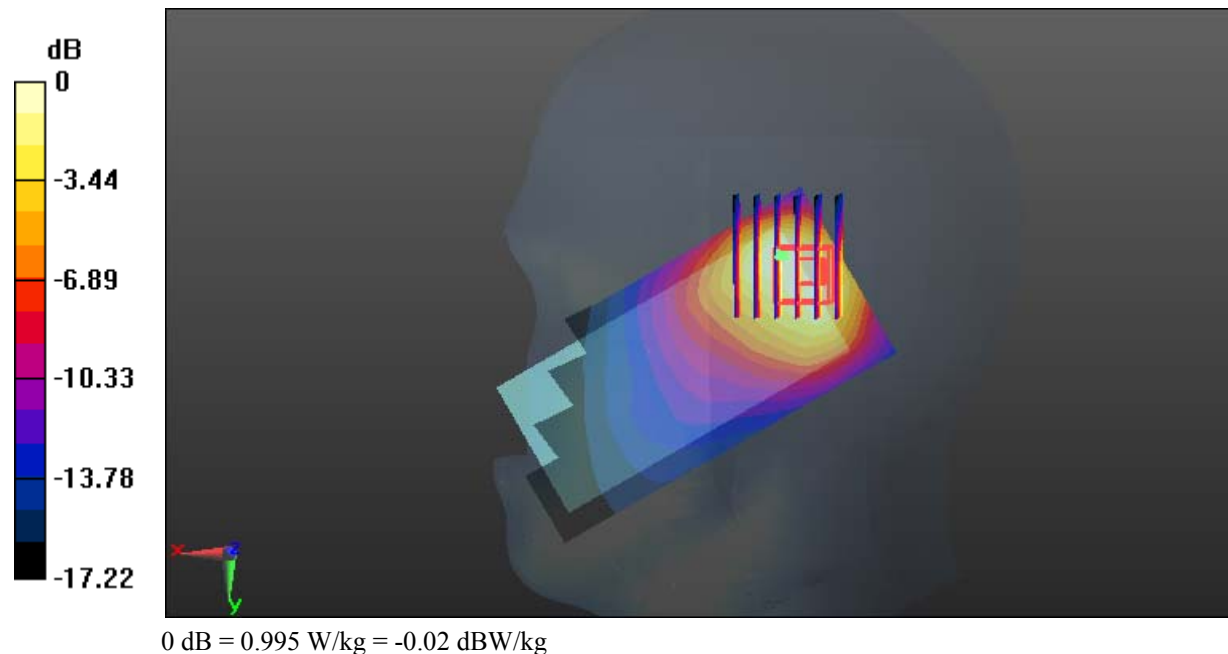
**Zoom Scan (6x7x7)/Cube 0:** Measurement grid: dx=8mm, dy=8mm, dz=5mm

Reference Value = 18.87 V/m; Power Drift = -0.08 dB

Peak SAR (extrapolated) = 1.27 W/kg

**SAR(1 g) = 0.630 W/kg; SAR(10 g) = 0.364 W/kg**

Maximum value of SAR (measured) = 0.995 W/kg



**Test Plot 15#: GSM 1900\_Body Worn Back\_Middle****DUT: 2G Feature phone; Type: S281; Serial: 18010805021**

Communication System: Generic GSM; Frequency: 1880 MHz; Duty Cycle: 1:8  
Medium parameters used:  $f = 1880$  MHz;  $\sigma = 1.517$  S/m;  $\epsilon_r = 52.619$ ;  $\rho = 1000$  kg/m<sup>3</sup> ;  
Phantom section: Flat Section

DASY5 Configuration:

- Probe: EX3DV4 - SN7441; ConvF(7.79, 7.79, 7.79); Calibrated: 2017/11/2;
- Sensor-Surface: 1.4mm (Mechanical Surface Detection)
- Electronics: DAE4 Sn1459; Calibrated: 2017/9/15
- Phantom: SAM (30deg probe tilt) with CRP v5.0\_20150321; Type: QD000P40CD; Serial: TP:1874
- Measurement SW: DASY52, Version 52.8 (8);

**Area Scan (61x111x1):** Interpolated grid: dx=1.500 mm, dy=1.500 mm

Maximum value of SAR (interpolated) = 1.01 W/kg

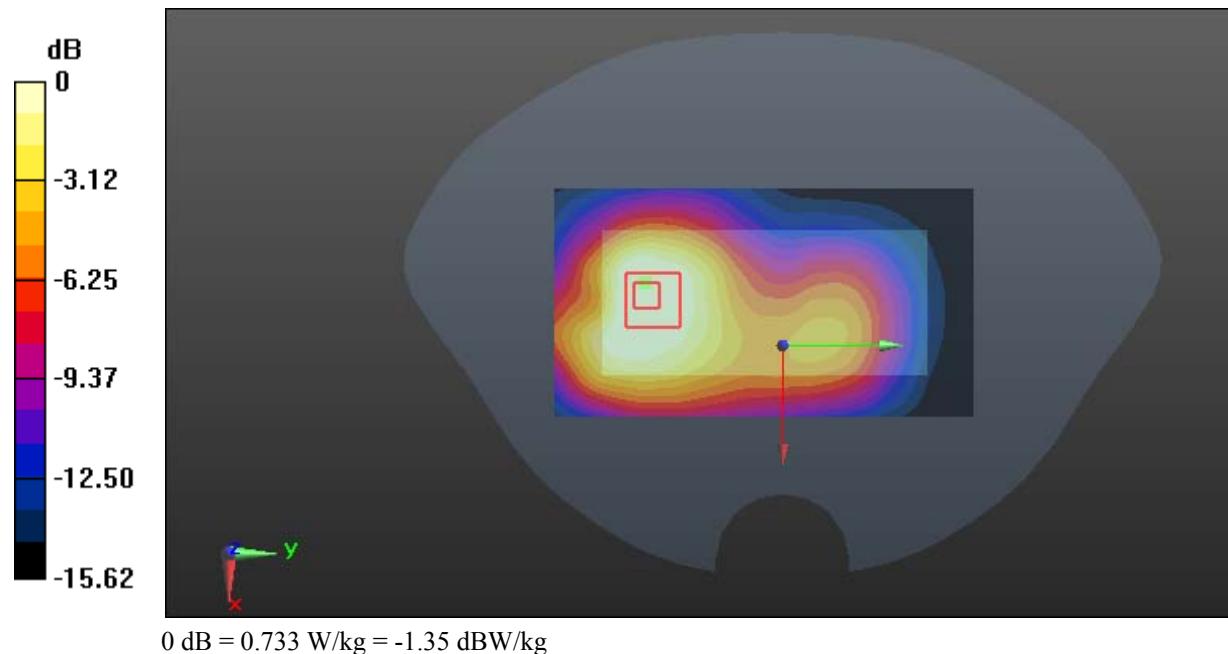
**Zoom Scan (6x6x7)/Cube 0:** Measurement grid: dx=8mm, dy=8mm, dz=5mm

Reference Value = 9.622 V/m; Power Drift = 0.01 dB

Peak SAR (extrapolated) = 1.20 W/kg

**SAR(1 g) = 0.685 W/kg; SAR(10 g) = 0.393 W/kg**

Maximum value of SAR (measured) = 0.733 W/kg



**Test Plot 16#: GSM 1900\_Body Back\_Low****DUT: 2G Feature phone; Type: S281; Serial: 18010805021**

Communication System: Generic GPRS-4 slots; Frequency: 1850.2 MHz; Duty Cycle: 1:2  
Medium parameters used:  $f = 1850.2$  MHz;  $\sigma = 1.48$  S/m;  $\epsilon_r = 53.12$ ;  $\rho = 1000$  kg/m<sup>3</sup> ;  
Phantom section: Flat Section

DASY5 Configuration:

- Probe: EX3DV4 - SN7441; ConvF(7.79, 7.79, 7.79); Calibrated: 2017/11/2;
- Sensor-Surface: 1.4mm (Mechanical Surface Detection)
- Electronics: DAE4 Sn1459; Calibrated: 2017/9/15
- Phantom: SAM (30deg probe tilt) with CRP v5.0\_20150321; Type: QD000P40CD; Serial: TP:1874
- Measurement SW: DASY52, Version 52.8 (8);

**Area Scan (61x111x1):** Interpolated grid: dx=1.500 mm, dy=1.500 mm

Maximum value of SAR (interpolated) = 1.90 W/kg

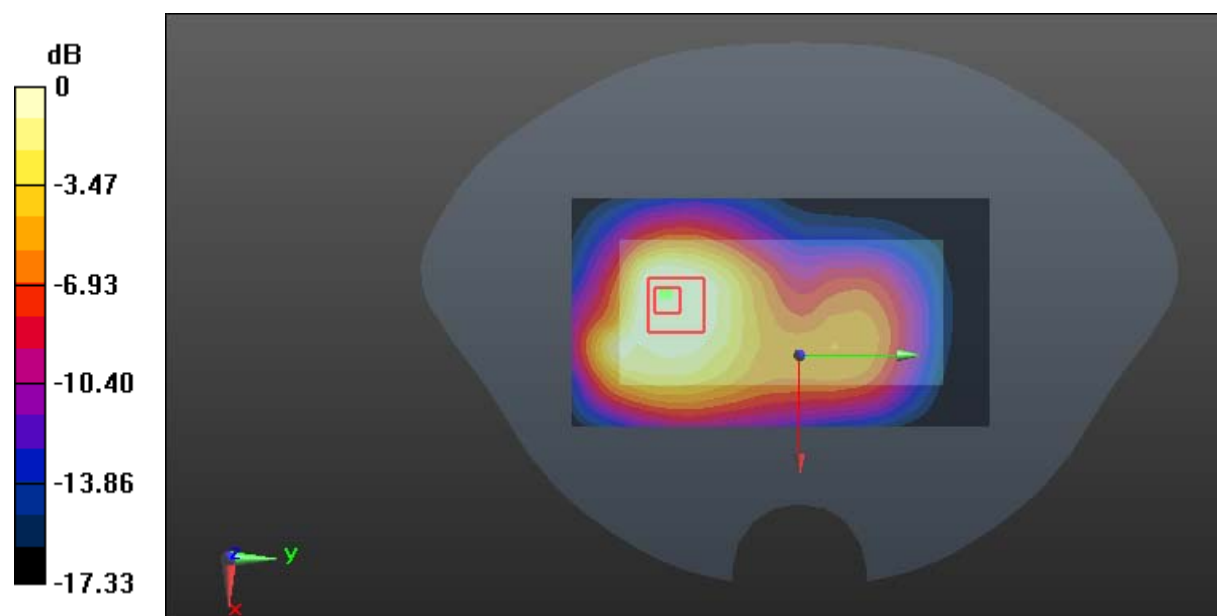
**Zoom Scan (6x6x7)/Cube 0:** Measurement grid: dx=8mm, dy=8mm, dz=5mm

Reference Value = 11.68 V/m; Power Drift = -0.03 dB

Peak SAR (extrapolated) = 2.25 W/kg

**SAR(1 g) = 1.24 W/kg; SAR(10 g) = 0.692 W/kg**

Maximum value of SAR (measured) = 1.32 W/kg



0 dB = 1.32 W/kg = 1.21 dBW/kg



**Test Plot 17#: GSM 1900\_Body Back\_Middle****DUT: 2G Feature phone; Type: S281; Serial: 18010805021**

Communication System: Generic GPRS-4 slots; Frequency: 1880 MHz; Duty Cycle: 1:2  
Medium parameters used:  $f = 1880$  MHz;  $\sigma = 1.517$  S/m;  $\epsilon_r = 52.619$ ;  $\rho = 1000$  kg/m<sup>3</sup> ;  
Phantom section: Flat Section

DASY5 Configuration:

- Probe: EX3DV4 - SN7441; ConvF(7.79, 7.79, 7.79); Calibrated: 2017/11/2;
- Sensor-Surface: 1.4mm (Mechanical Surface Detection)
- Electronics: DAE4 Sn1459; Calibrated: 2017/9/15
- Phantom: SAM (30deg probe tilt) with CRP v5.0\_20150321; Type: QD000P40CD; Serial: TP:1874
- Measurement SW: DASY52, Version 52.8 (8);

**Area Scan (61x111x1):** Interpolated grid: dx=1.500 mm, dy=1.500 mm

Maximum value of SAR (interpolated) = 1.97 W/kg

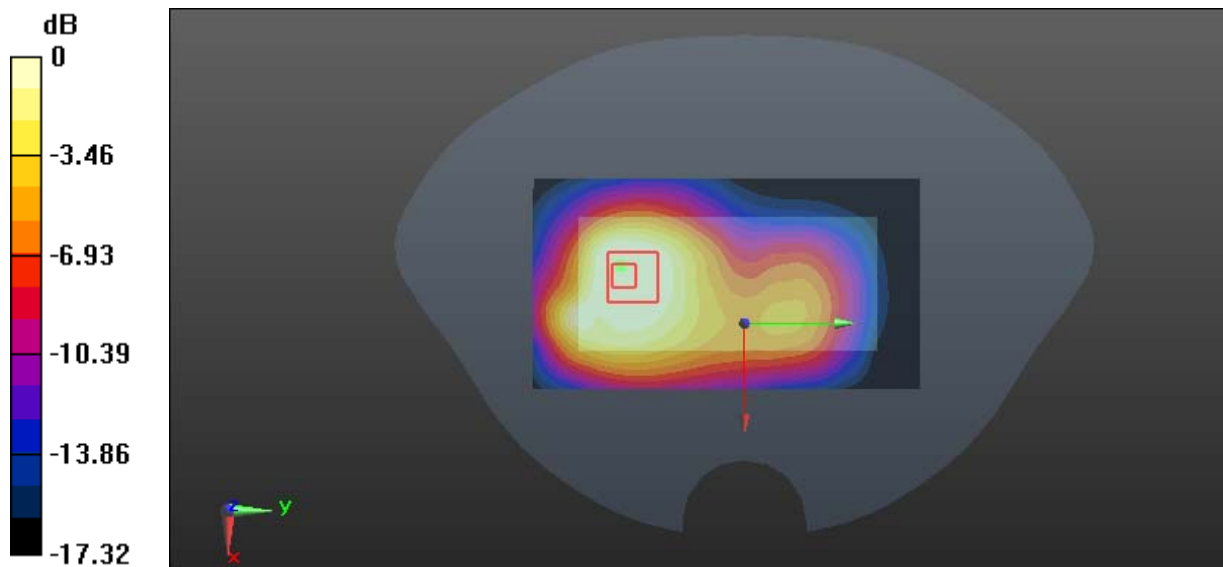
**Zoom Scan (6x6x7)/Cube 0:** Measurement grid: dx=8mm, dy=8mm, dz=5mm

Reference Value = 12.46 V/m; Power Drift = -0.13 dB

Peak SAR (extrapolated) = 2.37 W/kg

**SAR(1 g) = 1.3 W/kg; SAR(10 g) = 0.726 W/kg**

Maximum value of SAR (measured) = 1.38 W/kg



0 dB = 1.38 W/kg = 1.40 dBW/kg

**Test Plot 18#: GSM 1900\_Body Back\_High****DUT: 2G Feature phone; Type: S281; Serial: 18010805021**

Communication System: Generic GPRS-4 slots; Frequency: 1909.8 MHz; Duty Cycle: 1:2  
Medium parameters used:  $f = 1909.8$  MHz;  $\sigma = 1.545$  S/m;  $\epsilon_r = 52.664$ ;  $\rho = 1000$  kg/m<sup>3</sup> ;  
Phantom section: Flat Section

DASY5 Configuration:

- Probe: EX3DV4 - SN7441; ConvF(7.79, 7.79, 7.79); Calibrated: 2017/11/2;
- Sensor-Surface: 1.4mm (Mechanical Surface Detection)
- Electronics: DAE4 Sn1459; Calibrated: 2017/9/15
- Phantom: SAM (30deg probe tilt) with CRP v5.0\_20150321; Type: QD000P40CD; Serial: TP:1874
- Measurement SW: DASY52, Version 52.8 (8);

**Area Scan (61x111x1):** Interpolated grid: dx=1.500 mm, dy=1.500 mm

Maximum value of SAR (interpolated) = 1.85 W/kg

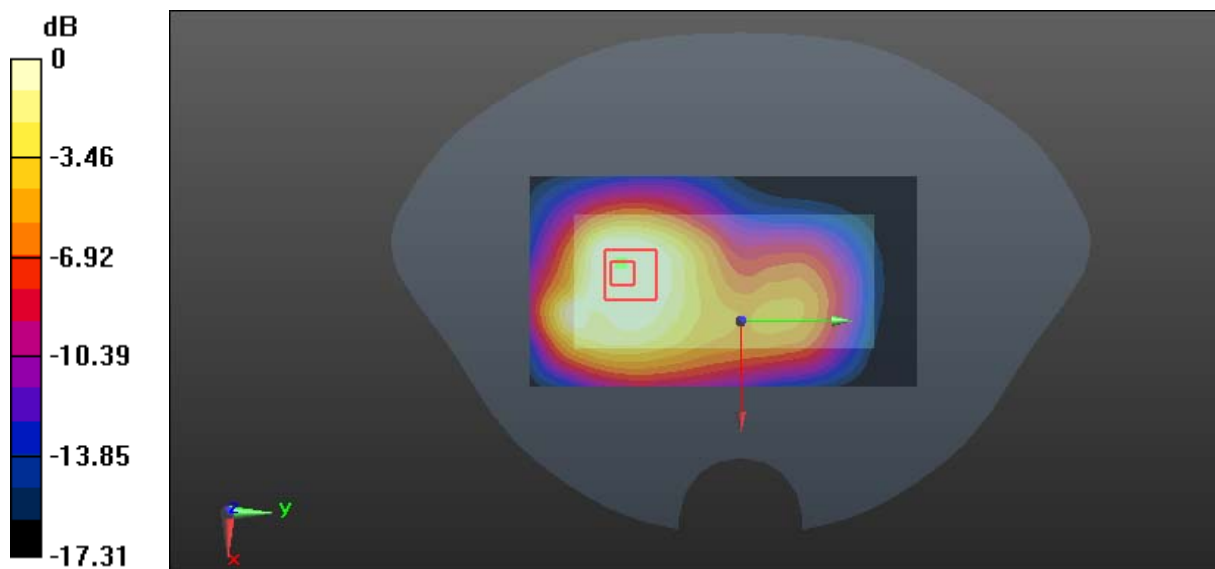
**Zoom Scan (6x6x7)/Cube 0:** Measurement grid: dx=8mm, dy=8mm, dz=5mm

Reference Value = 12.23 V/m; Power Drift = 0.04 dB

Peak SAR (extrapolated) = 2.32 W/kg

**SAR(1 g) = 1.27 W/kg; SAR(10 g) = 0.708 W/kg**

Maximum value of SAR (measured) = 1.34 W/kg



0 dB = 1.34 W/kg = 1.27 dBW/kg