
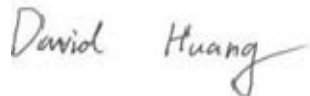



# EMC TEST REPORT



Report No.: 16070815-FCC-E

Supersede Report No: N/A

Applicant	MOBIWIRE MOBILES (NINGBO) CO.,LTD	
Product Name	4G LTE SMARTPHONE	
Model No.	N503	
Serial No.	N/A	
Test Standard	FCC Part 15 Subpart B Class B:2015, ANSI C63.4: 2014	
Test Date	August 09 to September 05, 2016	
Issue Date	September 07, 2016	
Test Result	<input checked="" type="checkbox"/> Pass <input type="checkbox"/> Fail	
Equipment complied with the specification	<input checked="" type="checkbox"/>	
Equipment did not comply with the specification	<input type="checkbox"/>	
		
Loren Luo Test Engineer	David Huang Checked By	
This test report may be reproduced in full only Test result presented in this test report is applicable to the tested sample only		

Issued by:

**SIEMIC (SHENZHEN-CHINA) LABORATORIES**

Zone A, Floor 1, Building 2 Wan Ye Long Technology Park

South Side of Zhoushi Road, Bao' an District, Shenzhen, Guangdong China 518108

Phone: +86 0755 2601 4629801 Email: [China@siemic.com.cn](mailto:China@siemic.com.cn)

## Laboratories Introduction

SIEMIC, headquartered in the heart of Silicon Valley, with superior facilities in US and Asia, is one of the leading independent testing and certification facilities providing customers with one-stop shop services for Compliance Testing and Global Certifications.



In addition to testing and certification, SIEMIC provides initial design reviews and compliance management throughout a project. Our extensive experience with China, Asia Pacific, North America, European, and International compliance requirements, assures the fastest, most cost effective way to attain regulatory compliance for the global markets.

### Accreditations for Conformity Assessment

Country/Region	Scope
USA	EMC, RF/Wireless, SAR, Telecom
Canada	EMC, RF/Wireless, SAR, Telecom
Taiwan	EMC, RF, Telecom, SAR, Safety
Hong Kong	RF/Wireless, SAR, Telecom
Australia	EMC, RF, Telecom, SAR, Safety
Korea	EMI, EMS, RF, SAR, Telecom, Safety
Japan	EMI, RF/Wireless, SAR, Telecom
Singapore	EMC, RF, SAR, Telecom
Europe	EMC, RF, SAR, Telecom, Safety

Test Report	16070815-FCC-E
Page	3 of 31

This page has been left blank intentionally.

## CONTENTS

1. REPORT REVISION HISTORY .....	5
2. CUSTOMER INFORMATION .....	5
3. TEST SITE INFORMATION .....	5
4. EQUIPMENT UNDER TEST (EUT) INFORMATION .....	6
5. TEST SUMMARY .....	8
6. MEASUREMENTS, EXAMINATION AND DERIVED RESULTS .....	9
6.1 AC POWER LINE CONDUCTED EMISSIONS.....	9
6.2 RADIATED EMISSIONS.....	15
ANNEX A. TEST INSTRUMENT.....	20
ANNEX B. EUT AND TEST SETUP PHOTOGRAPHS.....	21
ANNEX C. TEST SETUP AND SUPPORTING EQUIPMENT.....	27
ANNEX D. USER MANUAL / BLOCK DIAGRAM / SCHEMATICS / PARTLIST .....	30
ANNEX E. DECLARATION OF SIMILARITY.....	31

## 1. Report Revision History

Report No.	Report Version	Description	Issue Date
16070815-FCC-E	NONE	Original	September 07, 2016

## 2. Customer information

Applicant Name	MOBIWIRE MOBILES (NINGBO) CO.,LTD
Applicant Add	No.999,Dacheng East Road,Fenghua City,Zhejiang
Manufacturer	MOBIWIRE MOBILES (NINGBO) CO.,LTD
Manufacturer Add	No.999,Dacheng East Road,Fenghua City,Zhejiang

## 3. Test site information

Lab performing tests	SIEMIC (Shenzhen-China) LABORATORIES
Lab Address	Zone A, Floor 1, Building 2 Wan Ye Long Technology Park South Side of Zhoushi Road, Bao' an District, Shenzhen, Guangdong China 518108
FCC Test Site No.	718246
IC Test Site No.	4842E-1
Test Software	Radiated Emission Program-To Shenzhen v2.0

## 4. Equipment under Test (EUT) Information

Description of EUT:	4G LTE SMARTPHONE
Main Model:	N503
Serial Model:	N/A
Antenna Gain:	GSM850: 0dBi PCS1900: 1dBi UMTS-FDD Band V: 0dBi UMTS-FDD Band II: 1dBi LTE Band IV: 0.5dBi Bluetooth/BLE/WIFI: -3dBi GPS: -3dBi
Antenna Type:	PIFA antenna
Input Power:	Adapter: Model: S005UA0500100 Input: AC100-240V~50/60Hz,150mA Output: DC 5.0V,1000mA Battery: Spec: 3.8V,2270mAh(8.63Wh)
Equipment Category :	JBP
Type of Modulation:	GSM / GPRS: GMSK EGPRS: GMSK,8PSK UMTS-FDD: QPSK LTE Band: QPSK, 16QAM 802.11b/g/n: DSSS, OFDM Bluetooth: GFSK, $\pi$ /4DQPSK, 8DPSK BLE: GFSK GPS:BPSK

Test Report	16070815-FCC-E
Page	7 of 31

GSM850 TX: 824.2 ~ 848.8 MHz; RX: 869.2 ~ 893.8 MHz  
 PCS1900 TX: 1850.2 ~ 1909.8 MHz; RX: 1930.2 ~ 1989.8 MHz  
 UMTS-FDD Band V TX: 826.4 ~ 846.6 MHz; RX: 871.4 ~ 891.6 MHz  
 UMTS-FDD Band II TX: 1852.4 ~ 1907.6 MHz;  
 RX: 1932.4 ~ 1987.6 MHz  
 RF Operating Frequency (ies):  
 LTE Band IV TX: 1710.7 ~ 1754.3 MHz; RX : 2110.7 ~ 2154.3 MHz  
 WIFI: 802.11b/g/n(20M): 2412-2462 MHz  
 WIFI: 802.11n(40M): 2422-2452 MHz  
 Bluetooth& BLE: 2402-2480 MHz  
 GPS: 1575.42 MHz

GSM 850: 124CH  
 PCS1900: 299CH  
 UMTS-FDD Band V: 102CH  
 UMTS-FDD Band II: 277CH  
 Number of Channels:  
 WIFI :802.11b/g/n(20M): 11CH  
 WIFI :802.11n(40M): 7CH  
 Bluetooth: 79CH  
 BLE: 40CH  
 GPS:1CH

Port: Power Port, Earphone Port, USB Port

Trade Name : Noblex

FCC ID: 2ADA4N503

Date EUT received: July 18, 2016

Test Date(s): August 09 to September 05, 2016

## 5. Test Summary

The product was tested in accordance with the following specifications.

All testing has been performed according to below product classification:

FCC Rules	Description of Test	Result
§15.107; ANSI C63.4: 2014	AC Power Line Conducted Emissions	Compliance
§15.109; ANSI C63.4: 2014	Radiated Emissions	Compliance

### Measurement Uncertainty

Emissions		
Test Item	Description	Uncertainty
Band Edge and Radiated Spurious Emissions	Confidence level of approximately 95% (in the case where distributions are normal), with a coverage factor of 2 (for EUTs < 0.5m X 0.5m X 0.5m)	+5.6dB/-4.5dB
-	-	-



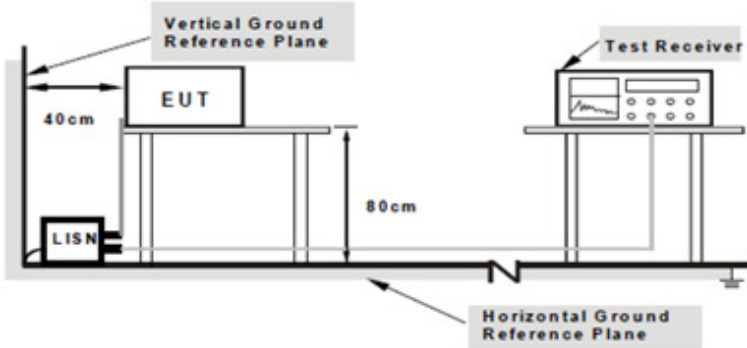
## 6. Measurements, Examination And Derived Results

### 6.1 AC Power Line Conducted Emissions

Temperature	24°C
Relative Humidity	53%
Atmospheric Pressure	1011mbar
Test date :	August 11, 2016
Tested By :	Loren Luo

#### Requirement(s):

Spec	Item	Requirement	Applicable														
47CFR§15.107	a)	<p>For Low-power radio-frequency devices that is designed to be connected to the public utility (AC) power line, the radio frequency voltage that is conducted back onto the AC power line on any frequency or frequencies, within the band 150 kHz to 30 MHz, shall not exceed the limits in the following table, as measured using a 50 [μ] H/50 ohms line impedance stabilization network (LISN). The lower limit applies at the boundary between the frequencies ranges.</p> <table border="1"> <thead> <tr> <th rowspan="2">Frequency ranges (MHz)</th> <th colspan="2">Limit (dBμV)</th> </tr> <tr> <th>QP</th> <th>Average</th> </tr> </thead> <tbody> <tr> <td>0.15 ~ 0.5</td> <td>66 – 56</td> <td>56 – 46</td> </tr> <tr> <td>0.5 ~ 5</td> <td>56</td> <td>46</td> </tr> <tr> <td>5 ~ 30</td> <td>60</td> <td>50</td> </tr> </tbody> </table>	Frequency ranges (MHz)	Limit (dBμV)		QP	Average	0.15 ~ 0.5	66 – 56	56 – 46	0.5 ~ 5	56	46	5 ~ 30	60	50	<input checked="" type="checkbox"/>
Frequency ranges (MHz)	Limit (dBμV)																
	QP	Average															
0.15 ~ 0.5	66 – 56	56 – 46															
0.5 ~ 5	56	46															
5 ~ 30	60	50															

Test Setup	 <p>Note: 1.Support units were connected to second LISN. 2.Both of LISNs (AMN) are 80cm from EUT and at least 80cm from other units and other metal planes support units.</p>
------------	---

Procedure	<ol style="list-style-type: none"> <li>The EUT and supporting equipment were set up in accordance with the requirements of the standard on top of a 1.5m x 1m x 0.8m high, non-metallic table.</li> <li>The power supply for the EUT was fed through a 50Ω /50mH EUT LISN, connected to filtered mains.</li> </ol>
-----------	--

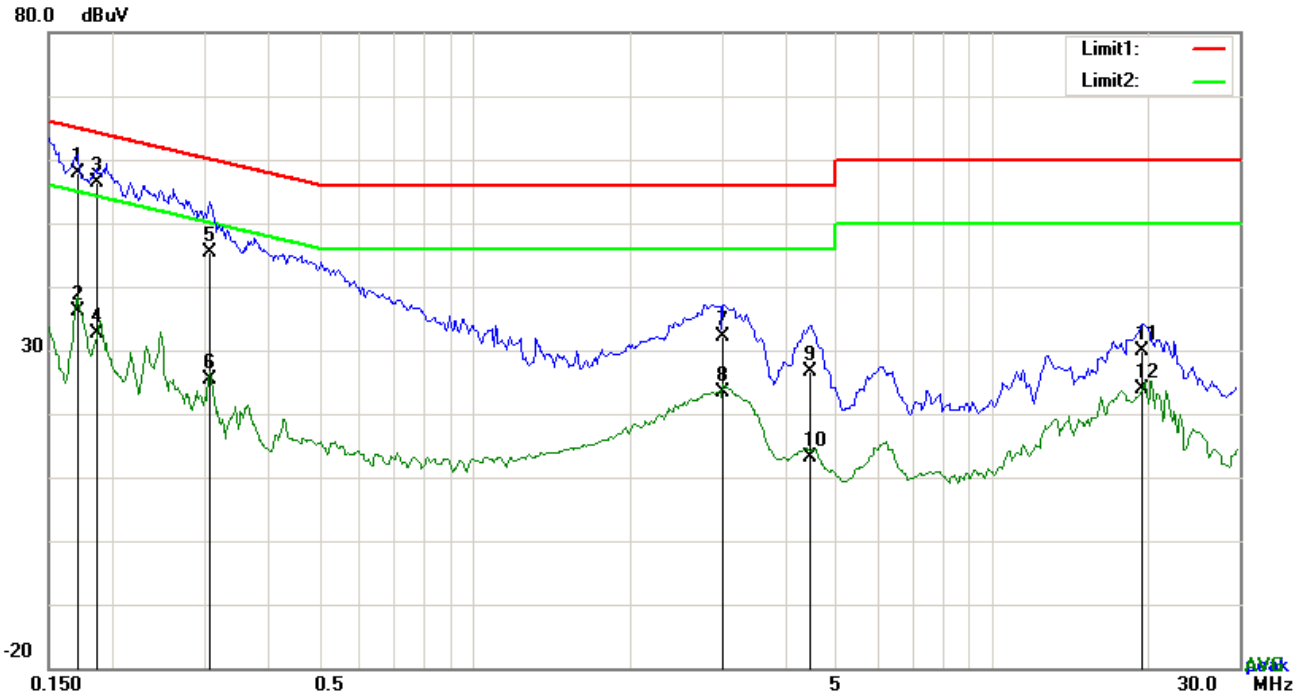
Test Report	16070815-FCC-E
Page	10 of 31

	<ol style="list-style-type: none"> <li>3. The RF OUT of the EUT LISN was connected to the EMI test receiver via a low-loss coaxial cable.</li> <li>4. All other supporting equipment were powered separately from another main supply.</li> <li>5. The EUT was switched on and allowed to warm up to its normal operating condition.</li> <li>6. A scan was made on the NEUTRAL line (for AC mains) or Earth line (for DC power) over the required frequency range using an EMI test receiver.</li> <li>7. High peaks, relative to the limit line, The EMI test receiver was then tuned to the selected frequencies and the necessary measurements made with a receiver bandwidth setting of 10 kHz.</li> <li>8. Step 7 was then repeated for the LIVE line (for AC mains) or DC line (for DC power).</li> </ol>
Remark	
Result	<input checked="" type="checkbox"/> Pass <input type="checkbox"/> Fail

Test Data     Yes                       N/A

Test Plot     Yes (See below)             N/A

**Test Mode : USB Mode**

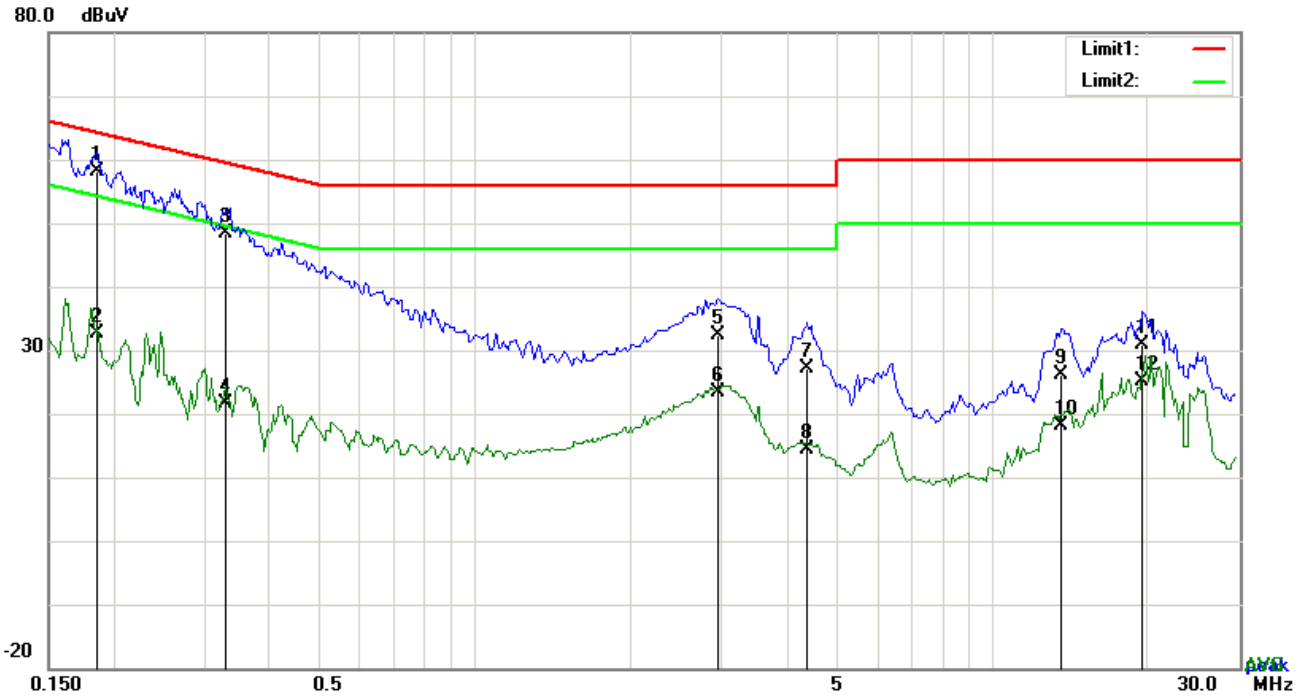


**Test Data**

**Phase Line Plot at 120Vac, 60Hz**

No.	P/L	Frequency	Reading	Detector	Corrected	Result	Limit	Margin
		(MHz)	(dBuV)		(dB)	(dBuV)	(dBuV)	(dB)
1	L1	0.1703	47.79	QP	10.03	57.82	64.95	-7.13
2	L1	0.1703	26.15	AVG	10.03	36.18	54.95	-18.77
3	L1	0.1854	46.42	QP	10.03	56.45	64.24	-7.79
4	L1	0.1854	22.53	AVG	10.03	32.56	54.24	-21.68
5	L1	0.3067	35.40	QP	10.03	45.43	60.06	-14.63
6	L1	0.3067	15.32	AVG	10.03	25.35	50.06	-24.71
7	L1	3.0156	22.01	QP	10.06	32.07	56.00	-23.93
8	L1	3.0156	13.39	AVG	10.06	23.45	46.00	-22.55
9	L1	4.4469	16.55	QP	10.07	26.62	56.00	-29.38
10	L1	4.4469	3.07	AVG	10.07	13.14	46.00	-32.86
11	L1	19.4853	19.54	QP	10.29	29.83	60.00	-30.17
12	L1	19.4853	13.59	AVG	10.29	23.88	50.00	-26.12

**Test Mode : USB Mode**

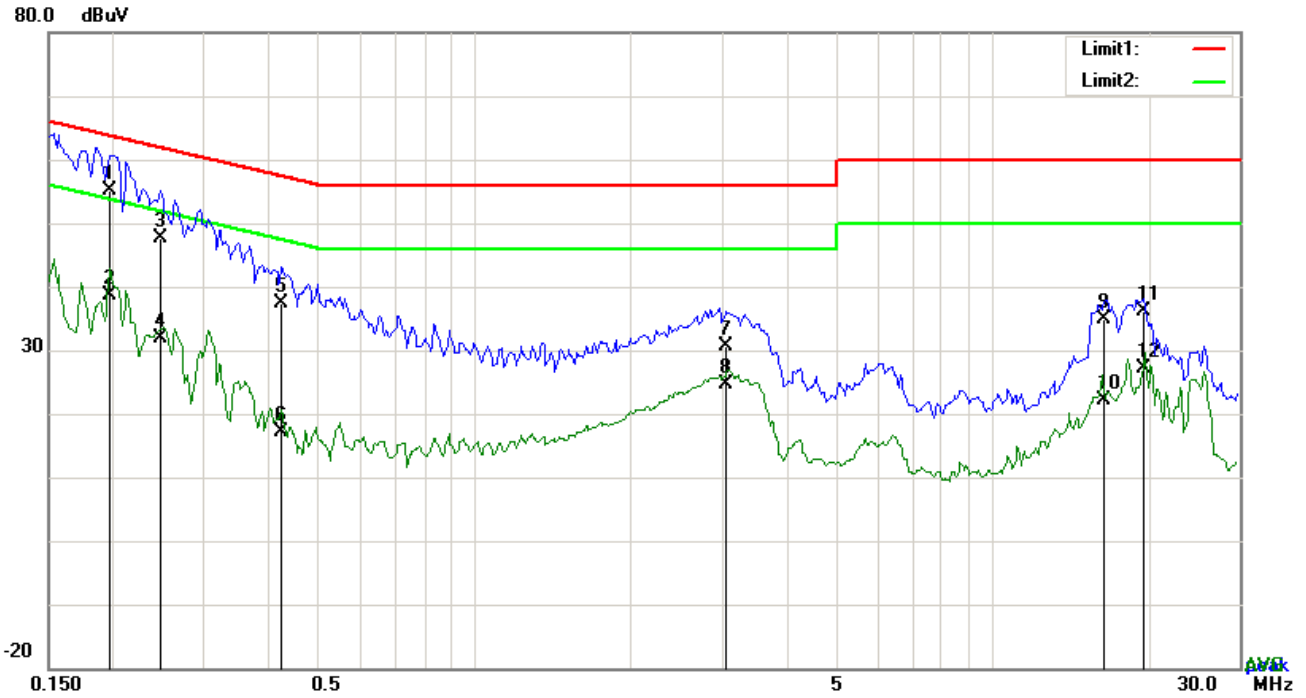


**Test Data**

**Phase Neutral Plot at 120Vac, 60Hz**

No.	P/L	Frequency (MHz)	Reading (dBuV)	Detector	Corrected (dB)	Result (dBuV)	Limit (dBuV)	Margin (dB)
1	N	0.1854	48.23	QP	10.02	58.25	64.24	-5.99
2	N	0.1854	22.62	AVG	10.02	32.64	54.24	-21.60
3	N	0.3303	38.44	QP	10.02	48.46	59.44	-10.98
4	N	0.3303	11.51	AVG	10.02	21.53	49.44	-27.91
5	N	2.9502	22.35	QP	10.05	32.40	56.00	-23.60
6	N	2.9502	13.28	AVG	10.05	23.33	46.00	-22.67
7	N	4.3845	17.07	QP	10.06	27.13	56.00	-28.87
8	N	4.3845	4.26	AVG	10.06	14.32	46.00	-31.68
9	N	13.5846	16.07	QP	10.18	26.25	60.00	-33.75
10	N	13.5846	7.86	AVG	10.18	18.04	50.00	-31.96
11	N	19.4658	20.64	QP	10.25	30.89	60.00	-29.11
12	N	19.4658	14.88	AVG	10.25	25.13	50.00	-24.87

<b>Test Mode :</b>	<b>USB Mode</b>
--------------------	-----------------

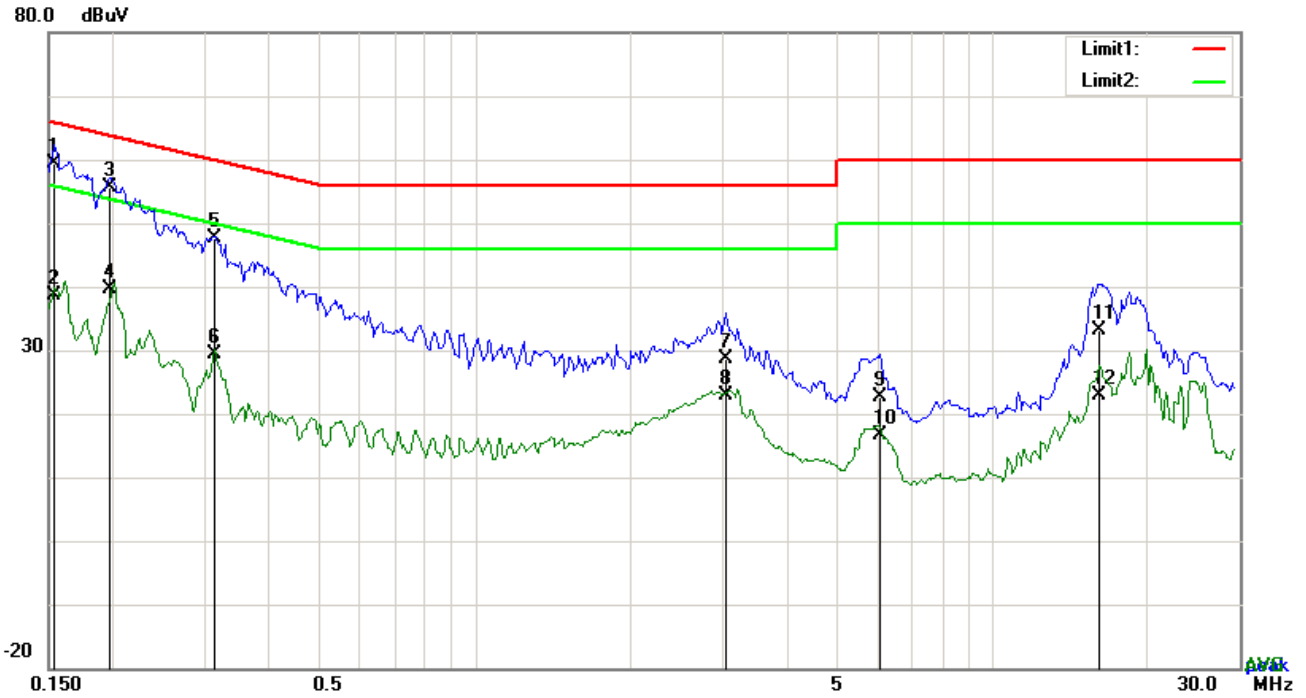


**Test Data**

**Phase Line Plot at 240Vac, 60Hz**

No.	P/L	Frequency (MHz)	Reading (dBuV)	Detector	Corrected (dB}	Result (dBuV)	Limit (dBuV)	Margin (dB)
1	L1	0.1968	45.08	QP	10.03	55.11	63.74	-8.63
2	L1	0.1968	28.71	AVG	10.03	38.74	53.74	-15.00
3	L1	0.2475	37.59	QP	10.03	47.62	61.84	-14.22
4	L1	0.2475	21.80	AVG	10.03	31.83	51.84	-20.01
5	L1	0.4230	27.45	QP	10.03	37.48	57.39	-19.91
6	L1	0.4230	7.14	AVG	10.03	17.17	47.39	-30.22
7	L1	3.0663	20.45	QP	10.06	30.51	56.00	-25.49
8	L1	3.0663	14.64	AVG	10.06	24.70	46.00	-21.30
9	L1	16.3985	24.70	QP	10.25	34.95	60.00	-25.05
10	L1	16.3985	11.97	AVG	10.25	22.22	50.00	-27.78
11	L1	19.5789	25.83	QP	10.29	36.12	60.00	-23.88
12	L1	19.5789	16.79	AVG	10.29	27.08	50.00	-22.92

**Test Mode : USB Mode**



**Test Data**

**Phase Neutral Plot at 240Vac, 60Hz**

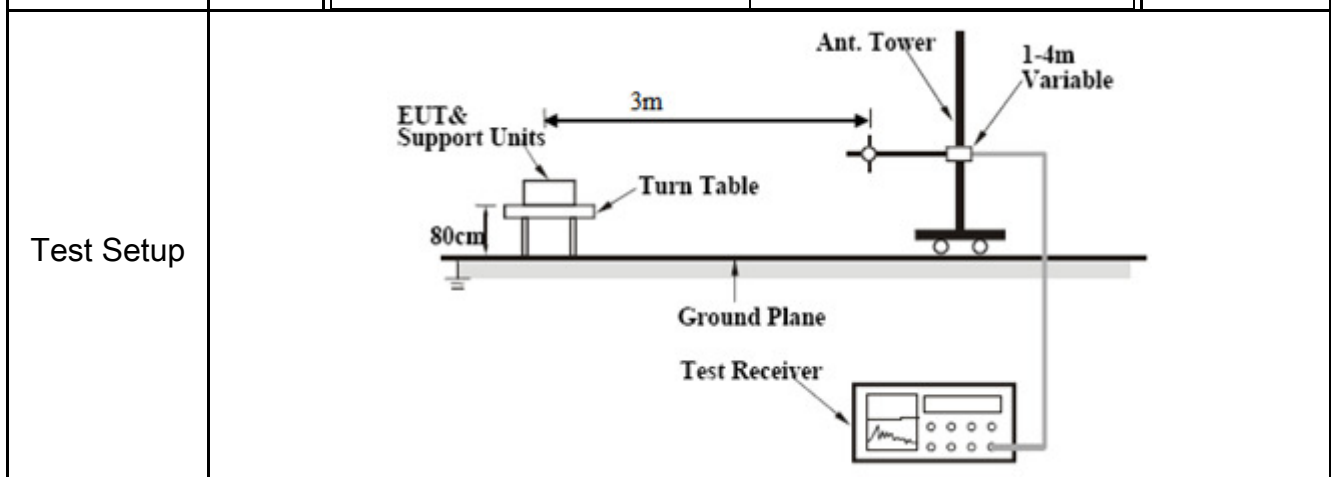
No.	P/L	Frequency	Reading	Detector	Corrected	Result	Limit	Margin
		(MHz)	(dBuV)		(dB)	(dBuV)	(dBuV)	(dB)
1	N	0.1539	49.47	QP	10.02	59.49	65.79	-6.30
2	N	0.1539	28.49	AVG	10.02	38.51	55.79	-17.28
3	N	0.1968	45.54	QP	10.02	55.56	63.74	-8.18
4	N	0.1968	29.62	AVG	10.02	39.64	53.74	-14.10
5	N	0.3138	37.61	QP	10.02	47.63	59.87	-12.24
6	N	0.3138	19.33	AVG	10.02	29.35	49.87	-20.52
7	N	3.0507	18.67	QP	10.05	28.72	56.00	-27.28
8	N	3.0507	12.75	AVG	10.05	22.80	46.00	-23.20
9	N	6.0654	12.60	QP	10.08	22.68	60.00	-37.32
10	N	6.0654	6.64	AVG	10.08	16.72	50.00	-33.28
11	N	16.1001	22.85	QP	10.21	33.06	60.00	-26.94
12	N	16.1001	12.67	AVG	10.21	22.88	50.00	-27.12

## 6.2 Radiated Emissions

Temperature	22°C
Relative Humidity	55%
Atmospheric Pressure	1013mbar
Test date :	August 13, 2016
Tested By :	Loren Luo

### Requirement(s):

Spec	Item	Requirement	Applicable										
47CFR§15.109(d)	a)	Except higher limit as specified elsewhere in other section, the emissions from the low-power radio-frequency devices shall not exceed the field strength levels specified in the following table and the level of any unwanted emissions shall not exceed the level of the fundamental emission. The tighter limit applies at the band edges	<input checked="" type="checkbox"/>										
		<table border="1"> <thead> <tr> <th>Frequency range (MHz)</th> <th>Field Strength (<math>\mu\text{V}/\text{m}</math>)</th> </tr> </thead> <tbody> <tr> <td style="text-align: center;">30 – 88</td> <td style="text-align: center;">100</td> </tr> <tr> <td style="text-align: center;">88 – 216</td> <td style="text-align: center;">150</td> </tr> <tr> <td style="text-align: center;">216 960</td> <td style="text-align: center;">200</td> </tr> <tr> <td style="text-align: center;">Above 960</td> <td style="text-align: center;">500</td> </tr> </tbody> </table>		Frequency range (MHz)	Field Strength ( $\mu\text{V}/\text{m}$ )	30 – 88	100	88 – 216	150	216 960	200	Above 960	500
		Frequency range (MHz)		Field Strength ( $\mu\text{V}/\text{m}$ )									
		30 – 88		100									
		88 – 216		150									
216 960	200												
Above 960	500												



Procedure	<ol style="list-style-type: none"> <li>1. The EUT was switched on and allowed to warm up to its normal operating condition.</li> <li>2. The test was carried out at the selected frequency points obtained from the EUT characterization. Maximization of the emissions, was carried out by rotating the EUT, changing the antenna polarization, and adjusting the antenna height in the following manner: <ol style="list-style-type: none"> <li>a. Vertical or horizontal polarization (whichever gave the higher emission level</li> </ol> </li> </ol>
-----------	---

	<p>over a full rotation of the EUT) was chosen.</p> <p>b. The EUT was then rotated to the direction that gave the maximum emission.</p> <p>c. Finally, the antenna height was adjusted to the height that gave the maximum emission.</p> <p>3. The resolution bandwidth and video bandwidth of test receiver/spectrum analyzer is 120 kHz for Quasiy Peak detection at frequency below 1GHz.</p> <p>4. The resolution bandwidth of test receiver/spectrum analyzer is 1MHz and video bandwidth is 3MHz with Peak detection for Peak measurement at frequency above 1GHz.      The resolution bandwidth of test receiver/spectrum analyzer is 1MHz and the video bandwidth with Peak detection for Average Measurement as below at frequency above 1GHz.      ■ 1 kHz (Duty cycle &lt; 98%) □ 10 Hz (Duty cycle &gt; 98%)</p> <p>5. Steps 2 and 3 were repeated for the next frequency point, until all selected frequency points were measured.</p>
Remark	
Result	<input checked="" type="checkbox"/> Pass <input type="checkbox"/> Fail

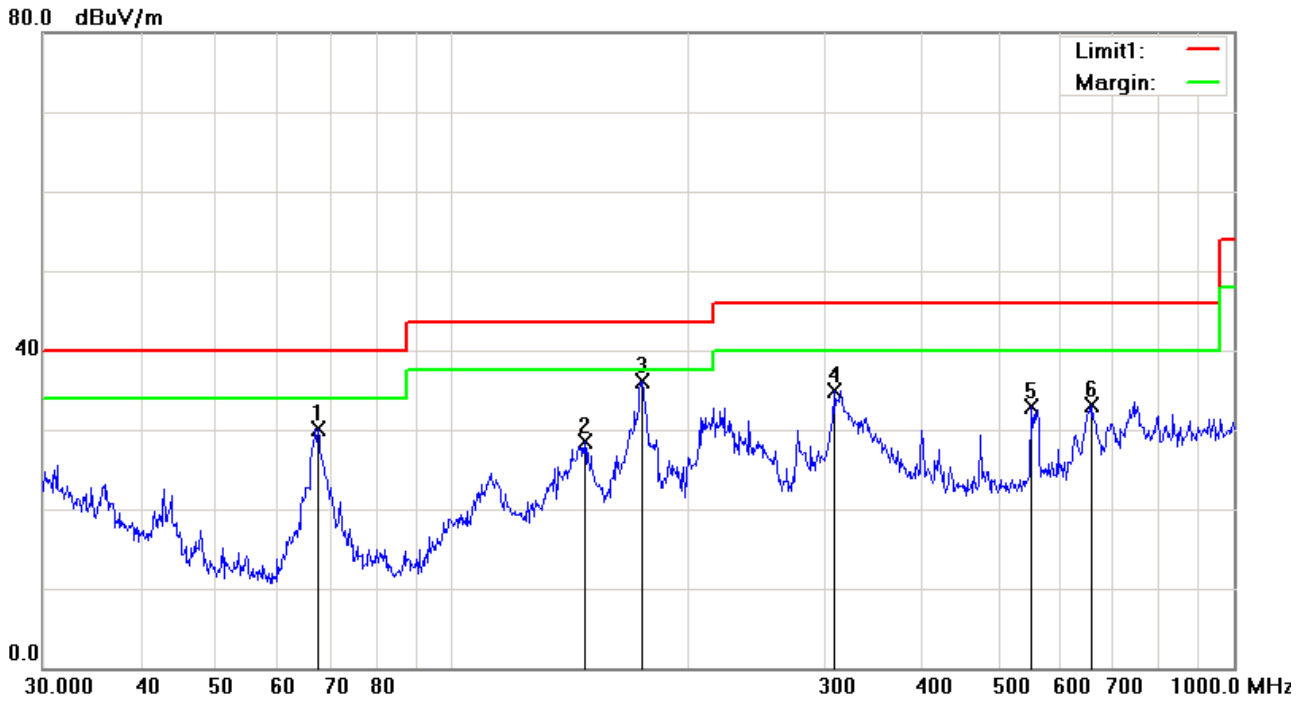
Test Data     Yes                       N/A

Test Plot     Yes (See below)             N/A



<b>Test Mode :</b>	<b>USB Mode</b>
--------------------	-----------------

**Below 1GHz**



**Test Data**

**Horizontal Polarity Plot @3m**

No.	P/L	Frequency	Reading	Detector	Corrected	Result	Limit	Margin	Height	Degree
		(MHz)	(dBuV/m)		(dB/m)	(dBuV/m)	(dBuV/m)	(dB)	(cm)	( ° )
1	H	67.4382	43.97	peak	-13.79	30.18	40.00	-9.82	100	142
2	H	147.9214	36.84	peak	-8.42	28.42	43.50	-15.08	100	286
3	H	175.0368	45.57	peak	-9.49	36.08	43.50	-7.42	100	121
4	H	307.8313	41.52	peak	-6.68	34.84	46.00	-11.16	100	325
5	H	550.9480	33.71	peak	-0.80	32.91	46.00	-13.09	100	160
6	H	658.8362	32.20	peak	0.91	33.11	46.00	-12.89	100	225

**Below 1GHz**



**Test Data**

**Vertical Polarity Plot @3m**

No.	P/L	Frequency (MHz)	Reading (dBuV/m)	Detector	Corrected (dB/m)	Result (dBuV/m)	Limit (dBuV/m)	Margin (dB)	Height (cm)	Degree (°)
1	V	40.2757	36.30	peak	-7.77	28.53	40.00	-11.47	100	208
2	V	67.2022	41.57	peak	-13.81	27.76	40.00	-12.24	100	134
3	V	175.6516	42.66	peak	-9.54	33.12	43.50	-10.38	100	121
4	V	194.4534	39.53	peak	-9.01	30.52	43.50	-12.98	100	134
5	V	322.1886	37.23	peak	-6.26	30.97	46.00	-15.03	100	355
6	V	558.7302	33.13	peak	-0.67	32.46	46.00	-13.54	100	142

### *Above 1GHz*

Frequency (MHz)	Amplitude (dB $\mu$ V/m)	Azimuth	Height (cm)	Polarity (H/V)	Factors (dB)	Limit (dB $\mu$ V/m)	Margin (dB)	Detector (PK/AV)
793.56	51.3	52	137	V	-21.36	74	-22.7	PK
1075.26	52.03	136	146	V	-24.03	74	-21.97	PK
1123.55	53.44	87	157	V	-22.5	74	-20.56	PK
896.53	55.02	72	263	H	-20.15	74	-18.98	PK
1532.65	49.38	113	252	H	-21.33	74	-24.62	PK
1067.9	48.77	156	196	H	-20.19	74	-25.23	PK

*Note1: The highest frequency of the EUT is 2480 MHz, so the testing has been conformed to  $5 \times 2472 \text{MHz} = 12,360 \text{MHz}$ .*

*Note2: The frequency that above 3GHz is mainly from the environment noise.*

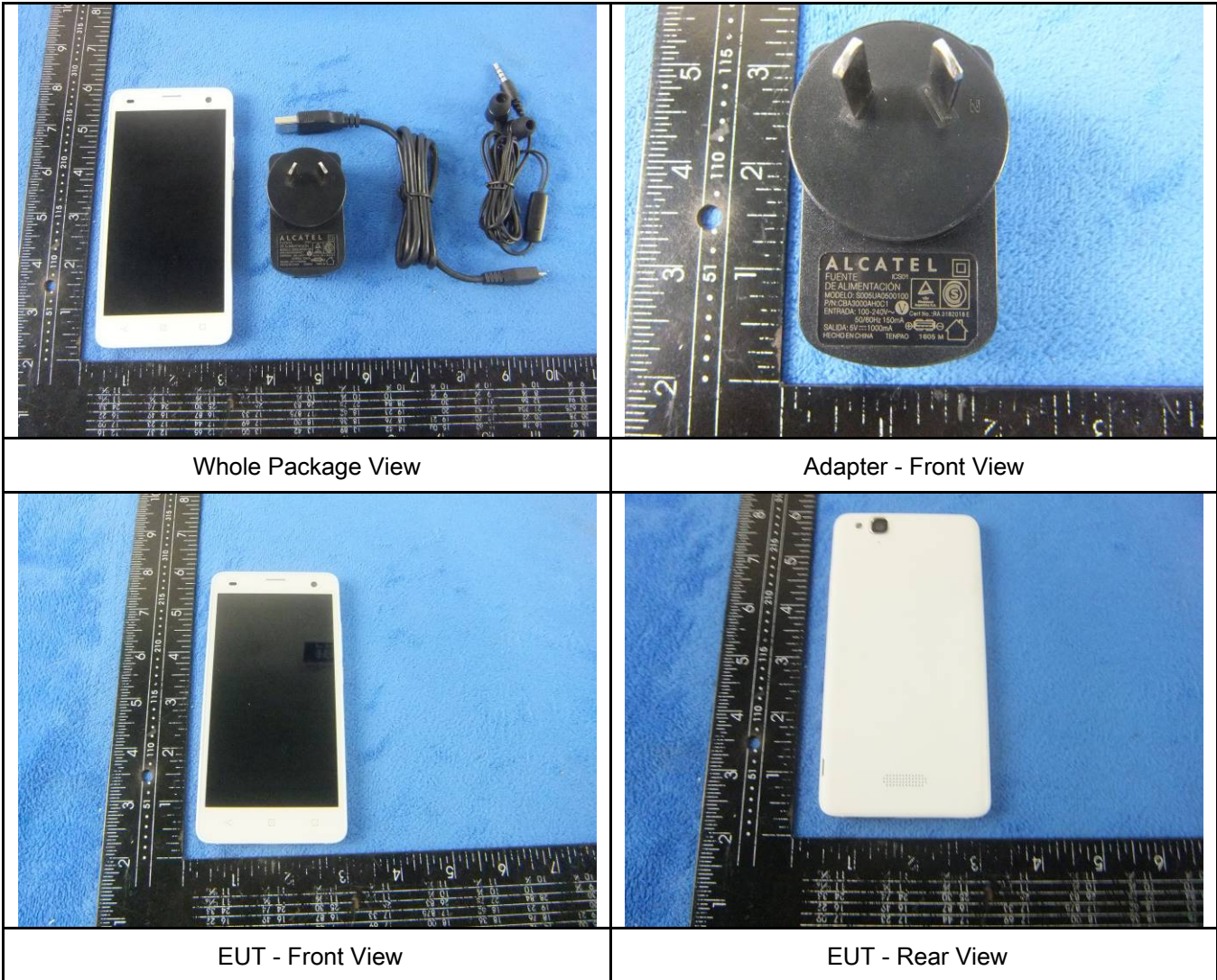
*Note3: The AV measurement performed, more than 20dB below limit so AV test data was not presented.*

## Annex A. TEST INSTRUMENT

Instrument	Model	Serial #	Cal Date	Cal Due	In use
<b>AC Line Conducted Emissions</b>					
EMI test receiver	ESCS30	8471241027	09/17/2015	09/16/2016	<input checked="" type="checkbox"/>
Line Impedance Stabilization Network	LI-125A	191106	09/25/2015	09/24/2016	<input checked="" type="checkbox"/>
Line Impedance Stabilization Network	LI-125A	191107	09/25/2015	09/24/2016	<input checked="" type="checkbox"/>
LISN	ISN T800	34373	09/25/2015	09/24/2016	<input checked="" type="checkbox"/>
Transient Limiter	LIT-153	531118	09/01/2015	08/31/2016	<input checked="" type="checkbox"/>
<b>Radiated Emissions</b>					
EMI test receiver	ESL6	100262	09/17/2015	09/16/2016	<input checked="" type="checkbox"/>
OPT 010 AMPLIFIER (0.1-1300MHz)	8447E	2727A02430	09/01/2015	08/31/2016	<input checked="" type="checkbox"/>
Microwave Preamplifier (1 ~ 26.5GHz)	8449B	3008A02402	03/24/2016	03/23/2017	<input checked="" type="checkbox"/>
Bilog Antenna (30MHz~6GHz)	JB6	A110712	09/21/2015	09/20/2016	<input checked="" type="checkbox"/>
Double Ridge Horn Antenna	AH-118	71259	09/24/2015	09/23/2016	<input checked="" type="checkbox"/>

**Annex B. EUT And Test Setup Photographs**

**Annex B.i. Photograph: EUT External Photo**

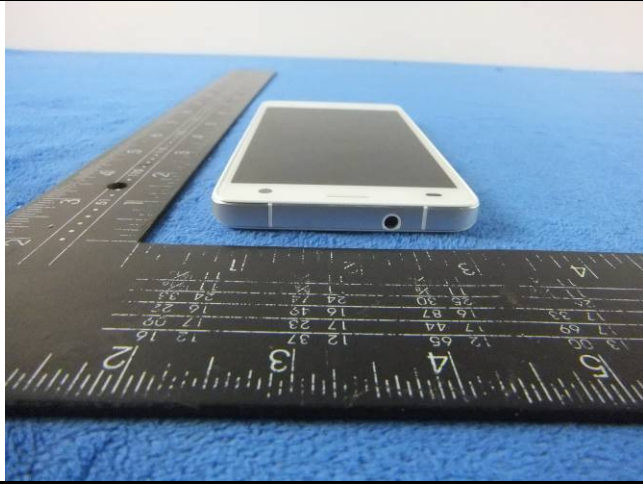


Whole Package View

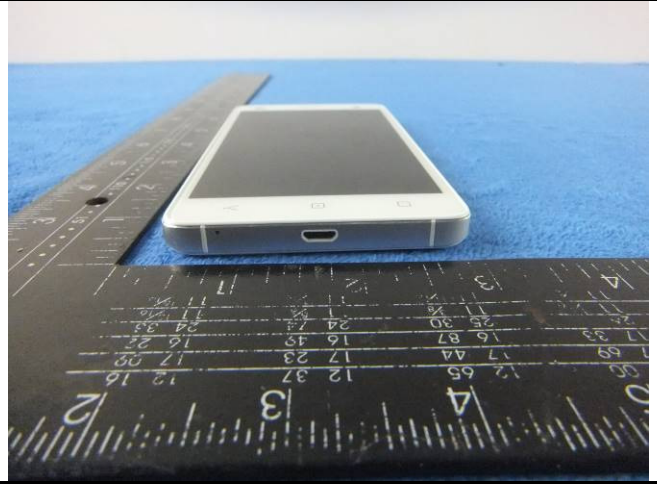
Adapter - Front View

EUT - Front View

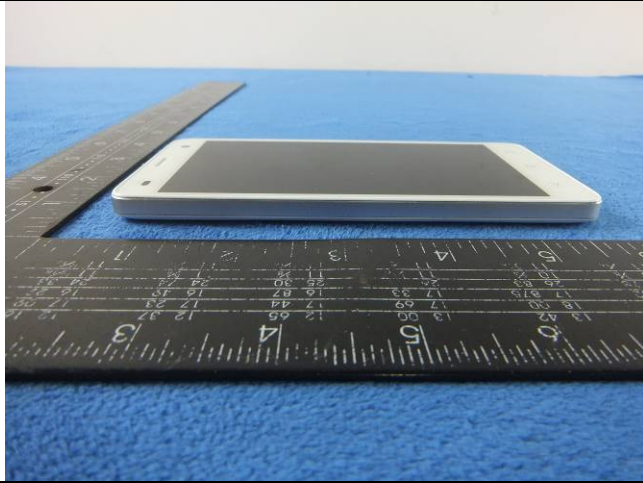
EUT - Rear View



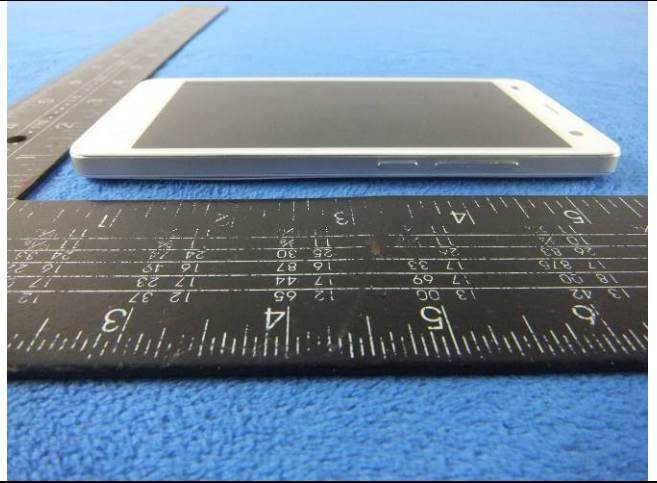
EUT - Top View



EUT - Bottom View



EUT - Left View



EUT - Right View

**Annex B.ii. Photograph: EUT Internal Photo**



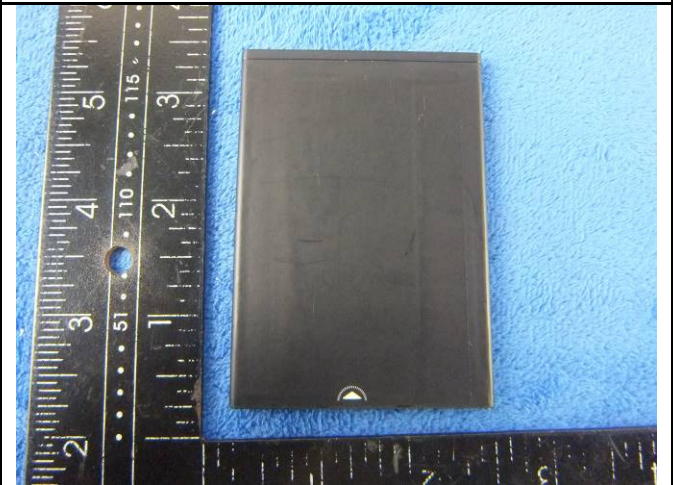
Cover Off - Top View 1



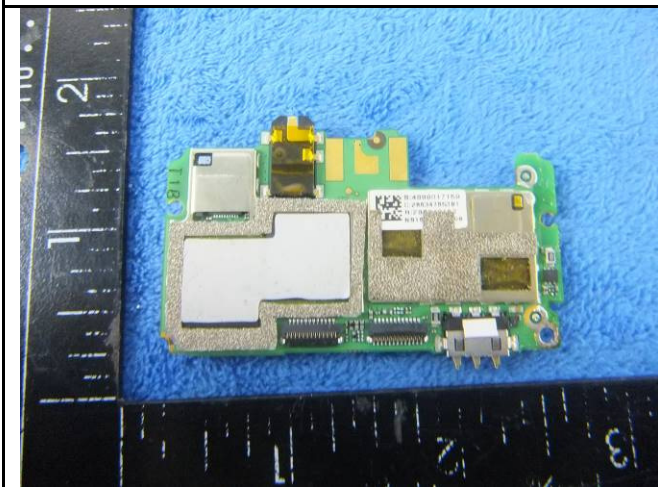
Cover Off - Top View 2



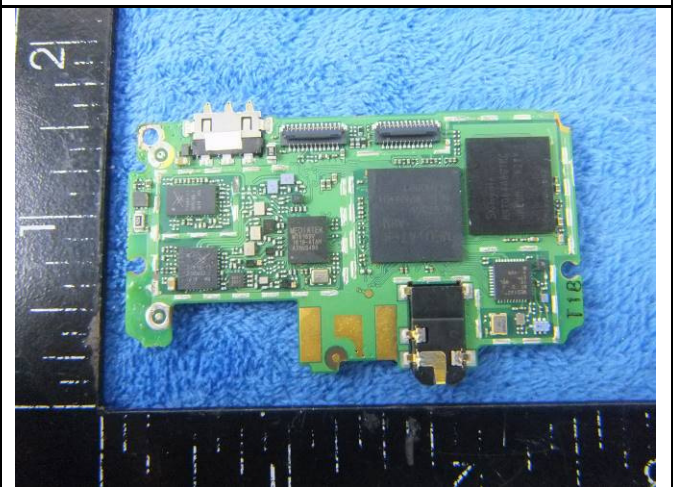
Battery - Front View



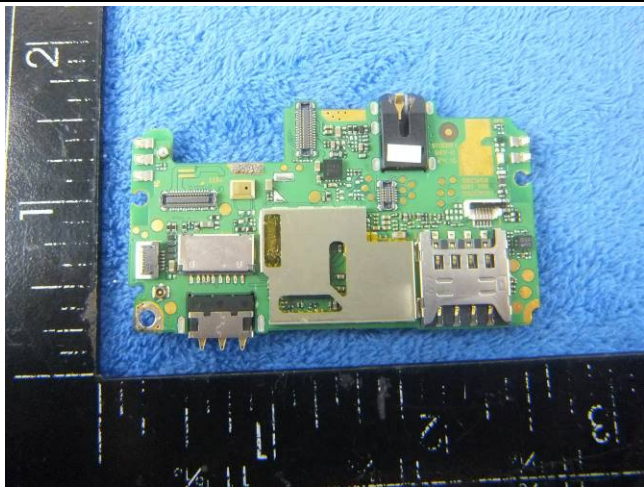
Battery - Rear View



Mainboard with Shielding - Front View



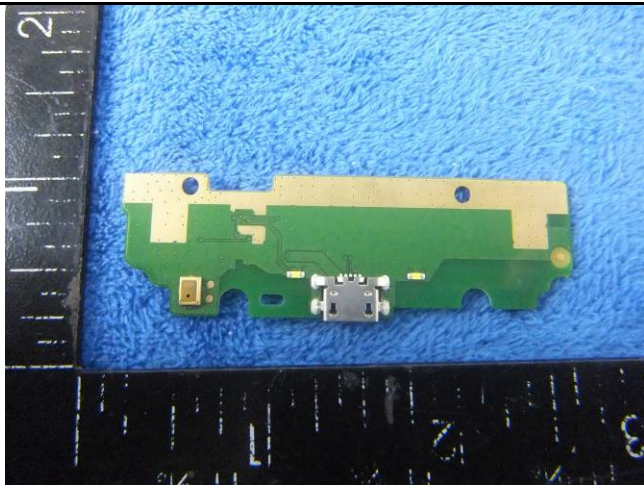
Mainboard without Shielding - Front View



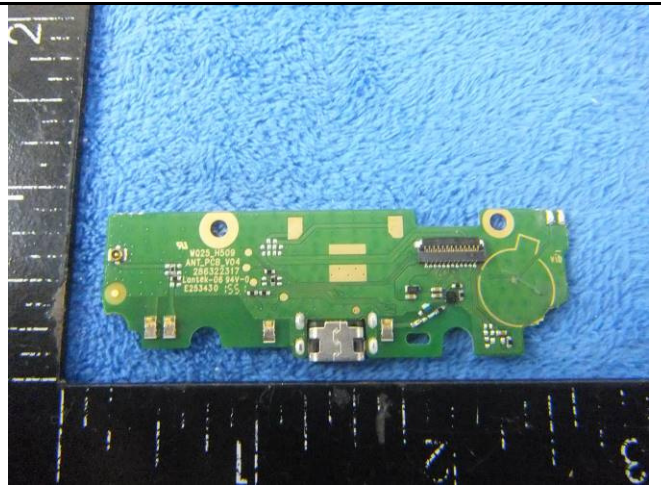
Mainboard with Shielding - Rear View



Mainboard without Shielding - Rear View



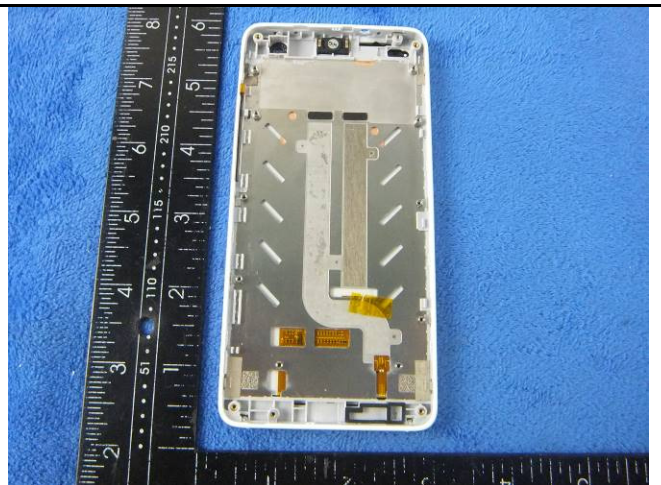
Small Board – Front View



Small Board - Rear View

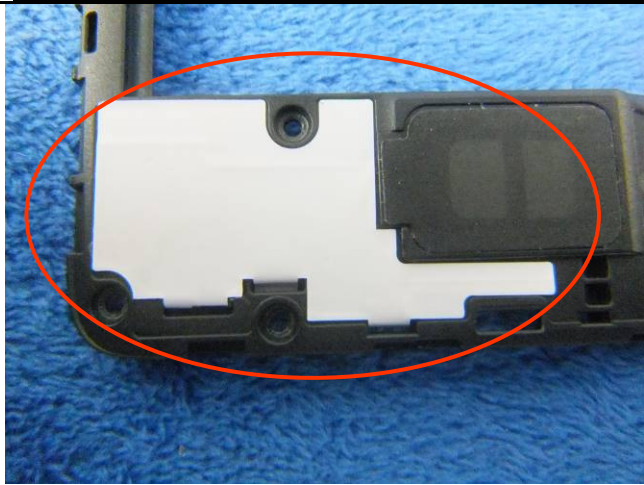


LCD – Front View



LCD – Rear View





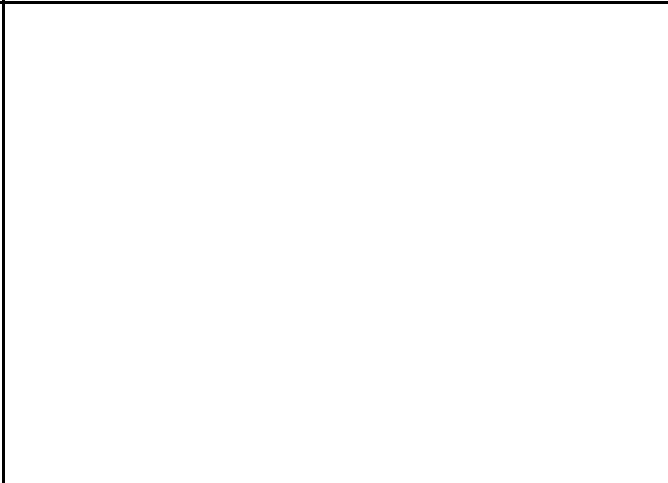
GSM/PCS/UMTS-FDD Antenna View



WIFI/BT/BLE/GPS - Antenna View



LTE Antenna View



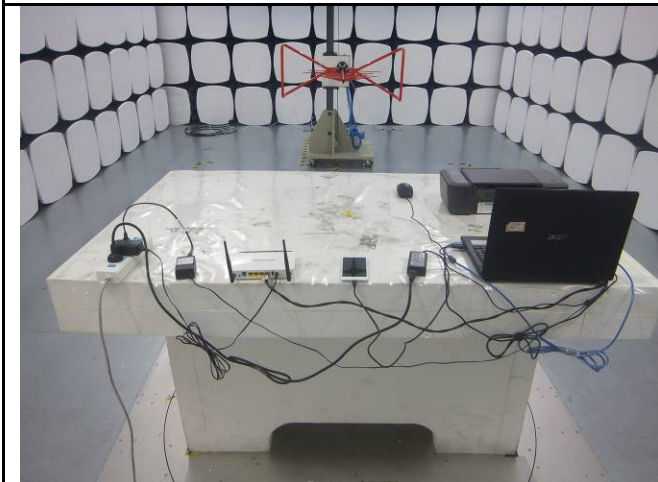
**Annex B.iii. Photograph: Test Setup Photo**



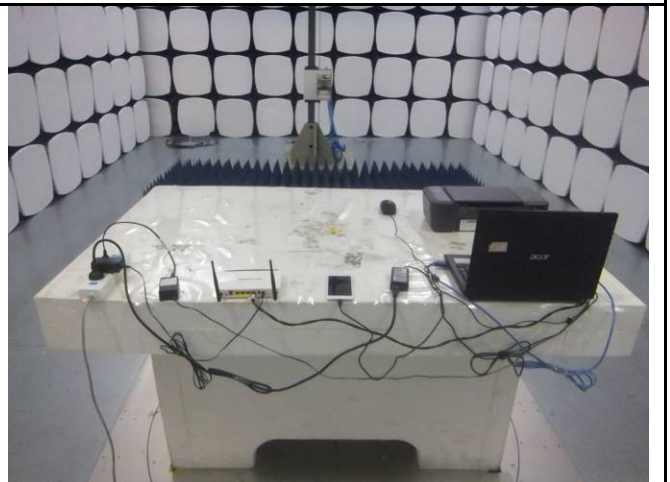
Conducted Emissions Test Setup – Front View



Conducted Emissions Test Setup – Side View



Radiated Emissions Test Setup Below 1GHz

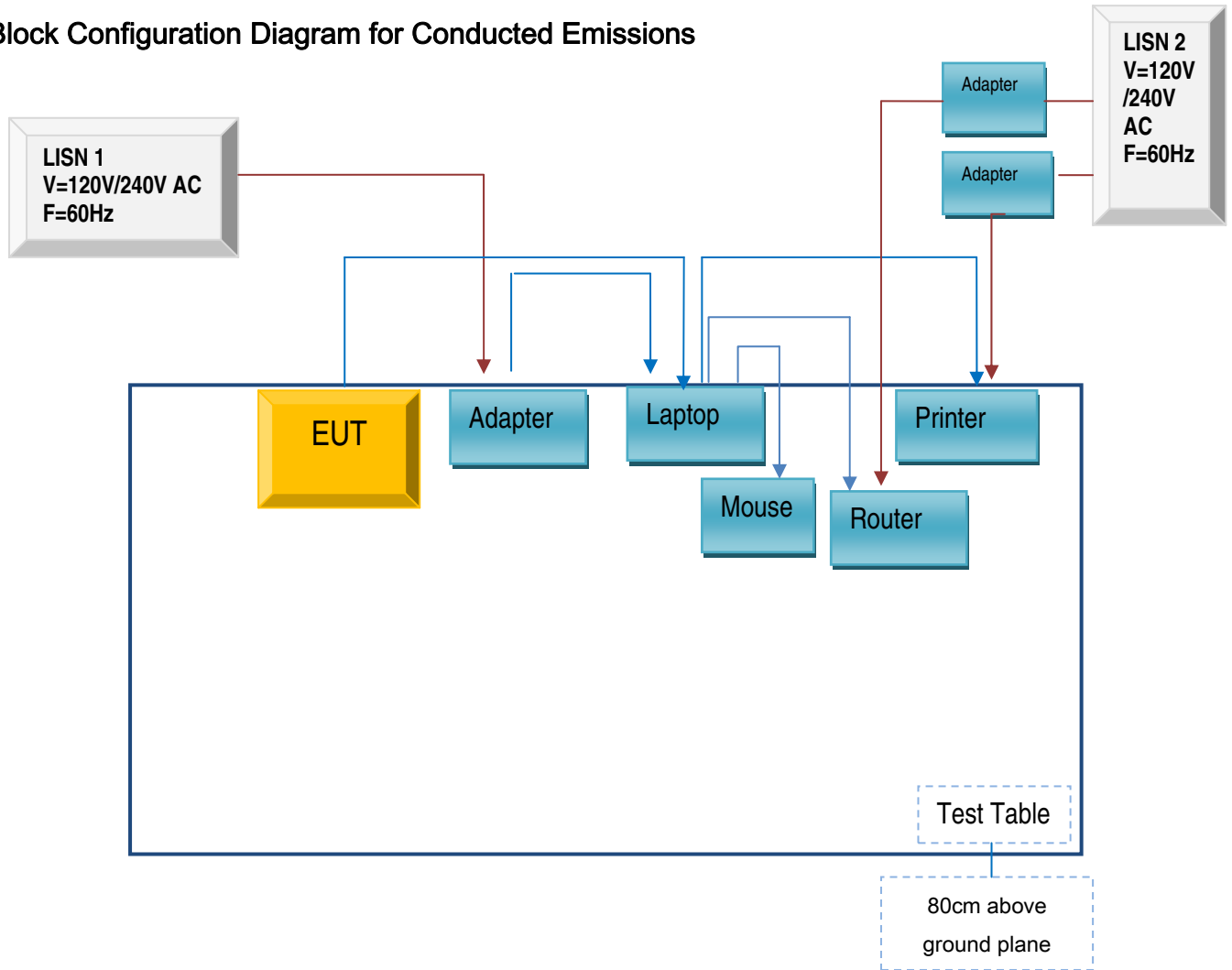


Radiated Emissions Test Setup Above 1GHz

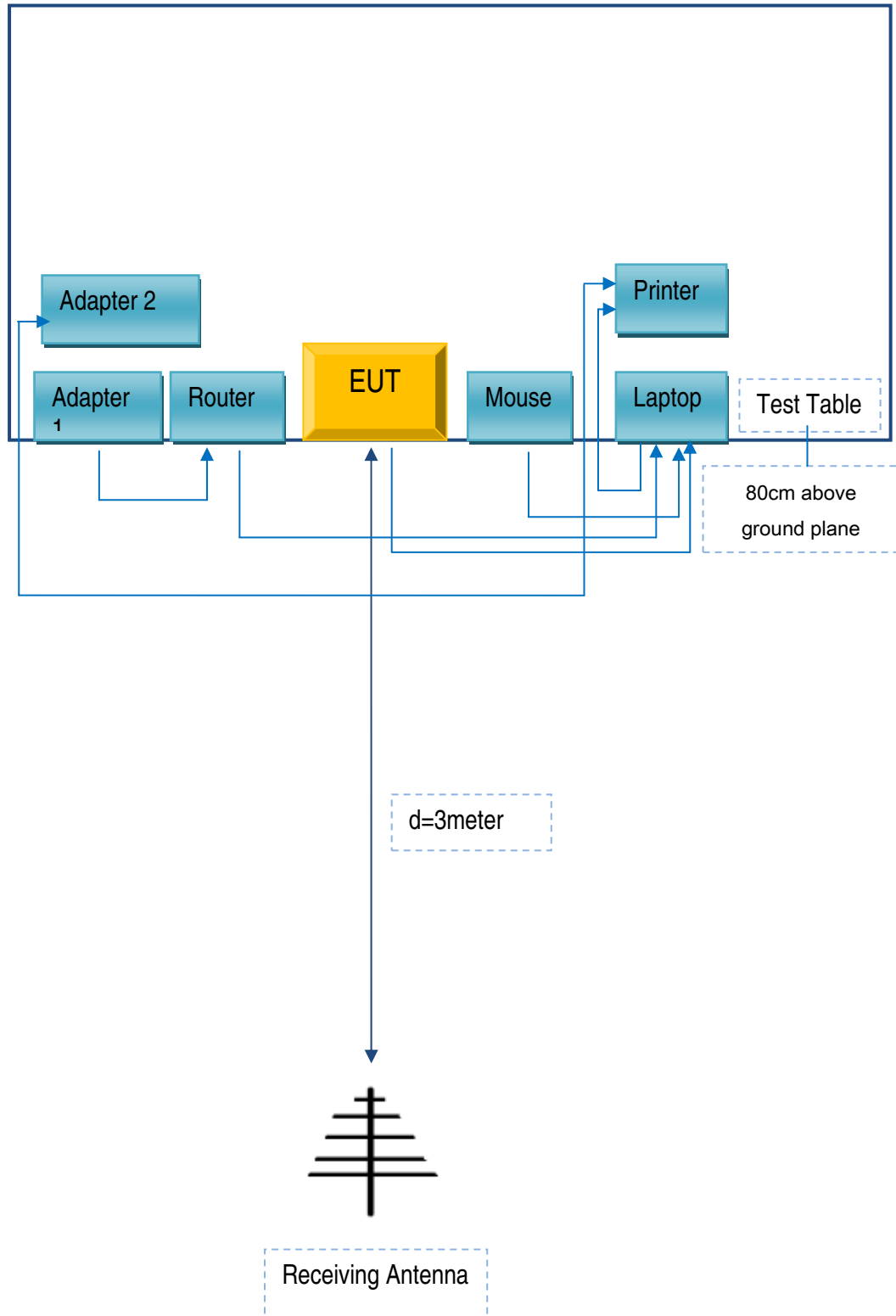
## Annex C. TEST SETUP AND SUPPORTING EQUIPMENT

### Annex C.ii. TEST SET UP BLOCK

Block Configuration Diagram for Conducted Emissions



### Block Configuration Diagram for Radiated Emissions



## Annex C. ii. SUPPORTING EQUIPMENT DESCRIPTION

The following is a description of supporting equipment and details of cables used with the EUT.

### Supporting Equipment:

Manufacturer	Equipment Description	Model	Serial No
Lenovo	Laptop	E40	LR-1EHRX
GOLDWEB	Router	R102	1202032094
MOBIWIRE MOBILES (NINGBO) CO.,LTD	Adapter	S005UA0500100	CBA3000AH0C1
Lenovo	AC Adapter	42T4416	21D9JU
HP	Printer	VCVRA-1003	CN36M19JWX
DELL	Mouse	E100	912NMTUT41481
BULL	Socket	GN-403	GN201203

### Supporting Cable:

Cable type	Shield Type	Ferrite Core	Length	Serial No
USB Cable	Un-shielding	No	2m	JX120051274
USB Cable	Un-shielding	No	2m	CBA3000AH0C1
RJ45 Cable	Un-shielding	No	2m	KX156327541
Router Power cable	Un-shielding	No	2m	13274630Z
Printer Power cable	Un-shielding	No	2m	127581031
Power Cable	Un-shielding	No	0.8m	GT211032

Test Report	16070815-FCC-E
Page	30 of 31

**Annex D. User Manual / Block Diagram / Schematics / Partlist**

Please see the attachment

Test Report	16070815-FCC-E
Page	31 of 31

## Annex E. DECLARATION OF SIMILARITY

N/A