

---

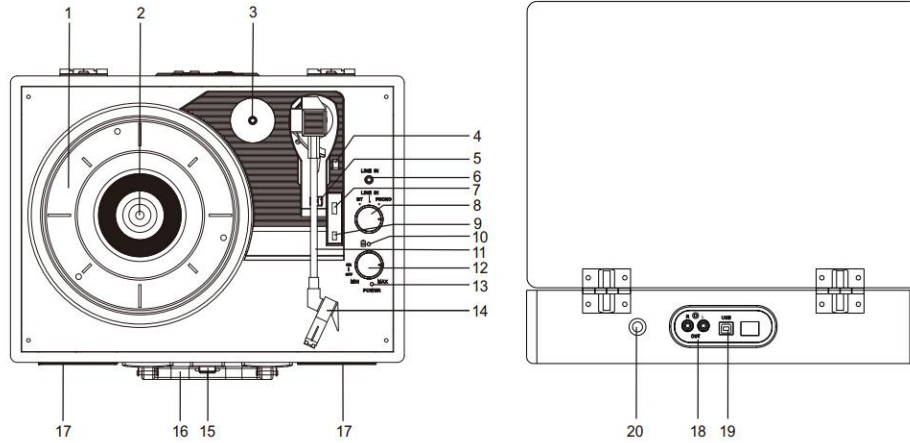
# JYK



**Model : ST15002-1**

**Suitcase Bluetooth Turntable with USB-to-PC Connection**

# PART OF LOCATIONS





## TURNTABLE PARTS

1. Turntable Platter
2. Turntable Shaft
3. 45 RPM Adaptor
4. Lift Lever
5. Tone Arm Clip/Rest
6. 3.5mm LINE IN Jack
7. Speed Control Selection
8. Function Selection Knob
9. Auto & Manual Stop Control Switch
10. Charging Battery led light indicator
11. Tone arm
12. Power/Volume Control Knob
13. Power and Function Led Indicator
14. Stylus(Needle) Cartridge
15. Lock
16. Handle
17. Built-in Speaker
18. RCA output jack
19. USB Port.
20. DC IN Power Jack

# WARNING

TO PREVENT FIRE OR SHOCK HAZARD, DO NOT USE THIS PLUG WITH AN EXTENSION CORD, RECEPTACLE OR OTHER OUTLET UNLESS THE BLADES CAN BE FULLY INSERTED TO PREVENT BLADE EXPOSURE. TO PREVENT FIRE OR SHOCK HAZARD, DO NOT EXPOSE THIS APPLIANCE TO RAIN OR MOISTURE.

 <p>The lightning flash with arrowhead symbol, within an equilateral triangle is intended to alert the user to the presence of uninsulated dangerous voltage within the product enclosure that may be of sufficient magnitude to constitute a risk of electric shock to persons.</p>	<p><b>CAUTION</b></p> <p><b>RISK OF ELECTRIC SHOCK</b></p> <p><b>DO NOT OPEN</b></p> <p>CAUTION: TO REDUCE THE RISK OF ELECTRIC SHOCK, DO NOT REMOVE COVER (OR BACK). NO USER - SERVICE-ABLE PARTS INSIDE. REFER SERVICING TO QUALIFIED SERVICE PERSONNEL.</p>	 <p>The exclamation point within an equilateral triangle is intended to alert the user to the presence of important operating and maintenance (servicing) instructions in the literature accompanying the appliance.</p>
---	--	---

The Caution Marking is located at the back enclosure of the apparatus.

The Rating Plate is located at the back enclosure of the apparatus.

## **IMPORTANT SAFETY INSTRUCTIONS**

1. Read these instructions.
2. Keep these instructions.
3. Heed all warnings.
4. Follow all instructions.
5. Do not use this apparatus near water.
6. Clean only with dry cloth.
7. Do not block any ventilation openings. Install in accordance with the manufacturer's instructions.
8. Do not install near any heat sources such as radiators, heat registers, stoves, or other apparatus (including amplifiers) that product heat.
9. Do not defeat the safety purpose of the polarized or grounding-type plug. A polarized plug has two blades with one wider than the other. A grounding type plug has two blades and a third grounding prong. The wide blade or the third prong is provided for your safety. If the provided plug does not fit into your outlet, consult an electrician for replacement of the obsolete outlet.
10. Protect the power cord from being walked on or pinched particularly at plugs, convenience receptacles, and the point where they exit from the apparatus.
11. Only use attachments/accessories specified by the manufacturer.
12. Use only with a cart, stand, tripod, bracket, or table recommended by the manufacturer, or sold with the product. When a cart is used, use caution when moving the cart/apparatus combination to avoid injury from tip-over.
13. Unplug this apparatus during lightning storms or when unused for a long periods of time.
14. Refer all servicing to qualified service personnel. Servicing is required when the apparatus has been damaged in any way, such as power-supply cord or plug is damaged, liquid has been spilled or objects have fallen into the apparatus, the apparatus has been exposed to rain or moisture, does not operate normally, or has been dropped.
15. This appliance shall not be exposed to dripping or splashing water and that no object filled with liquids such as vases shall be placed on the apparatus.
16. Do not overload wall outlet. Use only power source as indicated.



17. Use replacement part as specified by the manufacturer.
18. Upon completion of any service or repairs to this product, ask the service technician to perform safety checks.
19. Power Sources - This product should be operated only from the type of power source indicated on the marking label. If you are not sure of the type of power supply to your home, consult your product dealer or local power company. For products intended to operate from battery power, or other sources, refer to the operating instruction.
20. Object and Liquid Entry - Never push objects of any kind into this product through openings as they may touch dangerous voltage points or short-out parts that could result in a fire or electric shock. Never spill liquid of any kind on the product.
21. Damage Requiring Service - Unplug this product from the wall outlet and refer servicing to qualified service personnel under the following conditions:
  - a) When the power-supply cord or plug is damaged,
  - b) If liquid has been spilled, or objects have fallen into the product,
  - c) If the product has been exposed to rain or water,
  - d) If the product does not operate normally by following the operating instructions. Adjust only those controls that are covered by the operating instructions as an improper adjustment of other controls may result in damage and will often require extensive work by a qualified technician to restore the product to its normal operation.
  - e) If the product has been dropped or damaged in any way, and
  - f) When the product exhibits a distinct change in performance - this indicates a need for service.
22. Main plug is used as disconnect device and it should remain readily operable during intended use. In order to disconnect the apparatus from the mains completely, the mains plug should be disconnected from the mains socket outlet completely.
23. Excessive sound pressure from earphones and headphone can cause hearing loss.

This symbol indicates that this product incorporates double insulation between hazardous mains voltage and user accessible parts.



## **SAVE THESE INSTRUCTIONS**

### **PRECAUTION FORE USE**

- UNPACK ALL PARTS AND REMOVE PROTECTIVE MATERIAL.
- DO NOT CONNECT THE UNIT TO THE MAINS BEFORE CHECKING THE MAINS VOLTAGE AND ALL OTHER CONNECTIONS HAVE BEEN MADE.
- DO NOT COVER ANY VENTS AND MAKE SURE THAT THERE IS A SPACE OF SEVERAL CENTIMETERS AROUND THE UNIT FOR VENTILATION.

### **IMPORTANT NOTES**

Avoid installing the unit in locations described below:

- Places exposed to direct sunlight or close to heat radiating appliances such as electric heaters.
- Places subject to constant vibration.
- Dusty, humid or moist places.

## COMPLIANCE WITH FCC REGULATIONS

This device complies with Part 15 of the FCC Rules. Operation is subject to the following two conditions:

- (1) this device may not cause harmful interference, and
- (2) this device must accept any interference received, including interference that may cause undesired operation.

NOTE : This equipment has been tested and found to comply with the limits for a Class B digital device, pursuant to Part 15 of the FCC Rules. These limits are designed to provide reasonable protection against harmful interference in a residential installation. This equipment generates uses and can radiate radio frequency energy and, if not installed and used in accordance with the instructions, may cause harmful interference to radio communications. However, there is no guarantee that interference will not occur in a particular installation. If this equipment does cause harmful interference to radio or television reception, which can be determined by turning the equipment off and on, the user is encouraged to try to correct the interference by one or more of the following measures:

- Reorient or relocate the receiving antenna.
- Increase the separation between the equipment and receiver.
- Connect the equipment into an outlet on a circuit different from that to which the receiver is connected.
- Consult the dealer or an experienced radio/TV technician for help.

**CAUTION: Changes or modifications not expressly approved by the party responsible for compliance could void the user's authority to operate the equipment.**

## ACCESSORIES INCLUDED

- Application CD
- USB cable
- User Manual
- AC adaptor

## GETTING STARTED

### POWER SUPPLY

An AC-DC Adaptor with the output **5V DC 1000mA** (Included) is required for operating the main unit. To connect the AC-DC Adaptor to the unit and 120V~ 60Hz AC Outlet:

1. Firmly and securely insert the DC plug of the adaptor to the **DC IN Jack** on the back of the unit.
2. Plug the adaptor's AC plugs into a power outlet rated at 120V AC ~ 60Hz.  
Rotate the POWER/VOLUME ON/OFF SWITCH (#12) clockwise to turn on the system. The POWER INDICATOR (#13) will light on.

### BUILT-IN BATTERY CHARGING

Once the adaptor plugged, the built-in battery LED indicator will lights up in Red color. Once the battery is fully charge, the LED indicator will off.

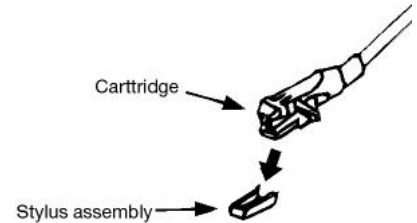
## CONNECTING THE USB CABLE

1. To encode music from your records or from the Line in line, connect the USB Port of the Turntable to a suitable USB port on your computer via the USB cable provided.
2. Please refer to CONNECTING TO A COMPUTER FOR RECORDING section of this manual for detail.

## PHONO OPERATION

### Please Note - Before Use

- Remove the stylus protector.
- Be sure that the tone arm is unlocked and free to move from the tone arm rest prior to operating. Lock the tone arm in place again when not in use.



1. Lift the BUCKLE on the front of the turntable and open the lid
2. Rotate the POWER/VOLUME knob clockwise until you hear a “click” sound to turn the device on. The Power LED indicator will light up.
3. Put a record on the turntable platter. Remember to use the 45 RPM adaptor located on the top-right corner when playing a 45 RPM record.
4. Remove the white plastic needle cover. Keep the needle cover in a safe and accessible place for future use.
4. Select the speed according to the record you are playing.
5. Release the tone arm by unlocking the tone arm lock.
6. Lift the tone arm by pushing back the lift lever.
7. Gently move the tone arm towards the turntable. Then, push the lift lever forward. The tone arm will gently descend onto the record and start playback.
8. To pause or stop playing, you need to manually lift and move the tone arm back to the tone

### NOTES:

Certain types of records may have an auto-stop area outside the preset limit, so the turntable may stop before the last track finishes. If this occurs, set the AUTO-STOP SWITCH (#9) to the “OFF” position. This allows the record to play to the end, but please note that it will not stop automatically. You must manually raise the tone arm and place it back in the rest and then turn off the power to stop the turntable from spinning.

## BLUETOOTH OPERATION

An external device with Bluetooth Connectivity can be wirelessly connected to this apparatus using the Bluetooth function.

1. Power on the unit by turning the VOLUME CONTROL KNOB clockwise. The red Led will light to show that the turntable is turned on.
2. Turn the FUNCTION KNOB to the BT(Bluetooth) position, the blue LED light will begin to flash
3. Turn your external device’s Bluetooth Setting ON. Wait a moment, and then look for the Bluetooth pairing name “TURN-101”.

4. Select the Bluetooth pairing name, to connect the unit. Once connected, the blue LED light will stop flashing.
5. You are now connected to your external device via Bluetooth.
6. Rotate the VOLUME CONTROL KNOB to adjust the sound level.

## AUXILIARY INPUT

Connecting external audio devices like MP3 players, CD players and older, non-dock able iPods (except iPod shuffle 3<sup>rd</sup> gen) so you can listen to your external source through the speakers of this system.

1. Use an audio cable (not included) with one 3.5 mm stereo plug on each end of the cable.
2. Plug one end into the LINE IN JACK (#6) and the other end of the cable into the Line-out Jack or Headphone Jack of your external audio device.
3. Rotate the POWER/VOLUME knob clockwise until you hear a “click” sound to turn the device on.
4. Rotate the FUNCTION SELECTOR (#8) to select to the LINE IN position. The Power and Function LED ‘Purple’ light indicator will light up.
5. The volume level can now be controlled through the main unit. Operate all other functions on the auxiliary device as usual.

### **Note:**

- (1). If the Line-Out Jack of your external device is connected, then you only need to adjust the volume control of this system. If the Headphone Jack of your external device is connected, then you may need to adjust both the volume control of your external device and the volume control of this system to find the most desirable volume setting.
- (2). Slide the POWER ON/OFF SWITCH (#12) to turn off the system when you finish listening. Don't forget to switch off the power on your external device as well.

## LINE OUT CONNECTION

You can connect this unit to an external Hi-Fi / AMPLIFIER system by connecting the RCA LINE OUT JACKS (#18) to the auxiliary input jacks on your Hi-Fi / AMPLIFIER system with RCA cables (not included).

## CONNECTING TO A COMPUTER FOR RECORDING

Before getting start, please install the “AUDACITY” recording software to your computer. Below is an example using a computer with Microsoft XP and the Audacity software installed. For other Windows OS or Mac OS, please visit Audacity website for details.

<http://audacity.sourceforge.net/>

### **INSTALLING THE AUDACITY SOFTWARE**

1. Insert the Audacity disc (included) into the CD drive of your computer.
2. Click on My computer on the desktop.
3. Double click CD drive to view the contents of the CD and select “Windows” under “Audacity” folder.

4. Open “Windows” folder and select “Audacity 2.0.3(Windows 2000, XP, Vista, 7, 8)”.
5. Double click Audacity set up icon with file name “audacity-win-2.0.3” to install the Audacity software according to the instruction, read license agreements of Audacity before installation.

**NOTE:**

Free software (AUDACITY) licensed under the GNU general public license (GPL).

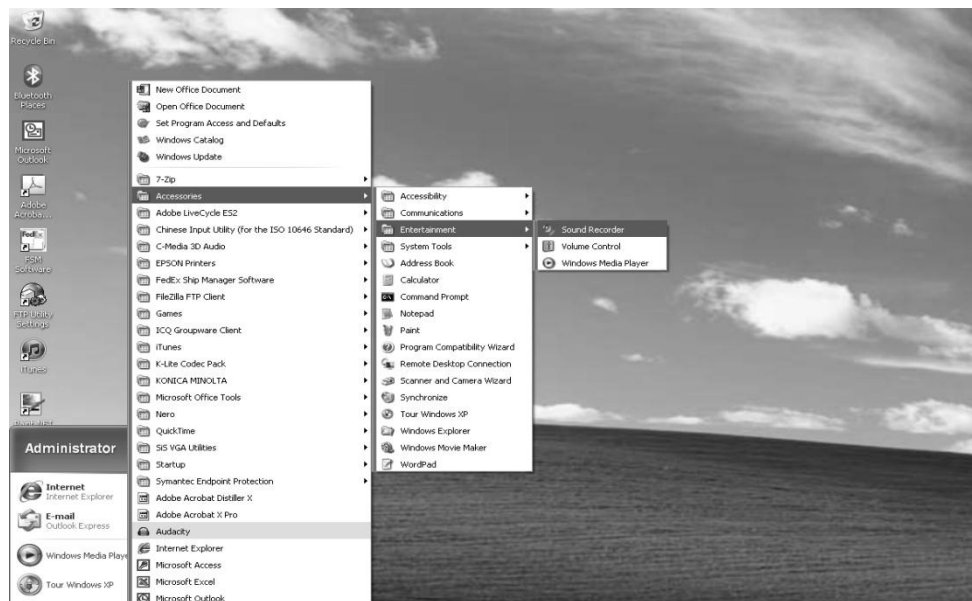
More information as well as open source code can be found on the provided CD or on the website at: <http://audacity.sourceforge.net/>

**INSTALL THE USB DRIVE**

1. Use the included USB cable to connect the turntable to your computer.
2. Your computer will detect the unit as a “ USB PnP Audio Device ” & start to install USB drivers for it automatically.
3. Waiting for the installation complete until your computer shows a pop up a message that it is installed properly and ready to use.

**SET RECORDING INPUT LEVEL (USE WINDOWS XP COMPUTER)**

1. Click the “Start” in the left corner of your computer
2. Select “All Programs” → “Accessories” → “Entertainment” → “Sound Recorder” to open the sound record interface.



3. Select “Edit” and then click “Audio Properties” towards the bottom of the menu to select “Audio properties” interface.

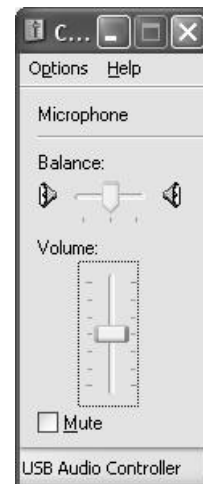




- In the Sound Recording field, click the pull down menu to select “ USB PnP Audio Device ” as Default device of sound recording.



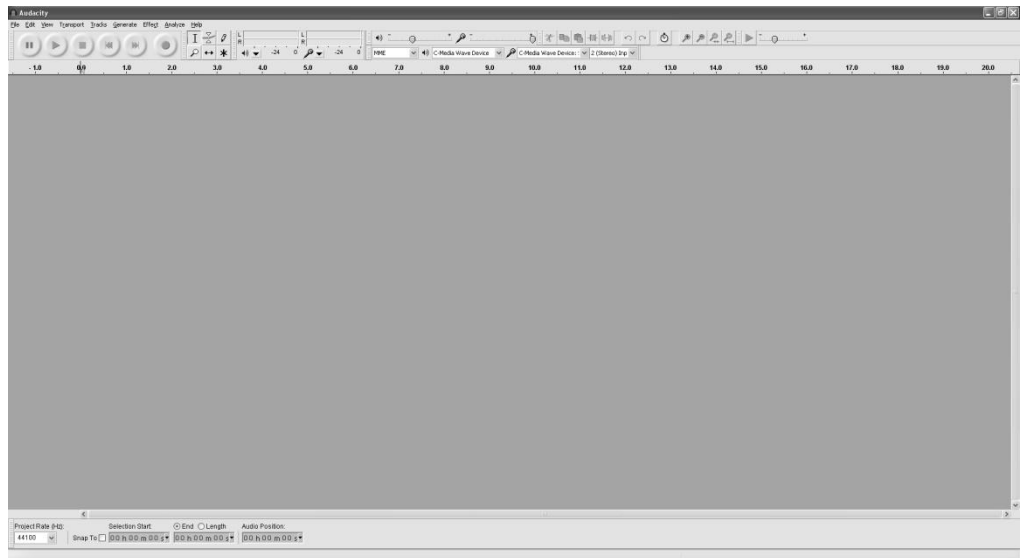
- Click the Volume button under the Sound recording tab to open “Recording Control” interface;
- Adjust the line in volume to a level without distortion. You can play a record on the turntable and use the Sound Recorder to record a short clip of music for testing. The sound wave will show on the interface screen when recording.



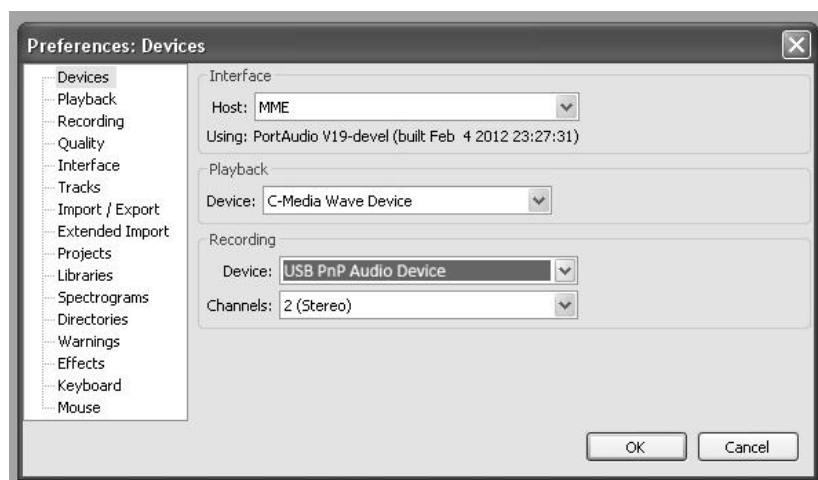
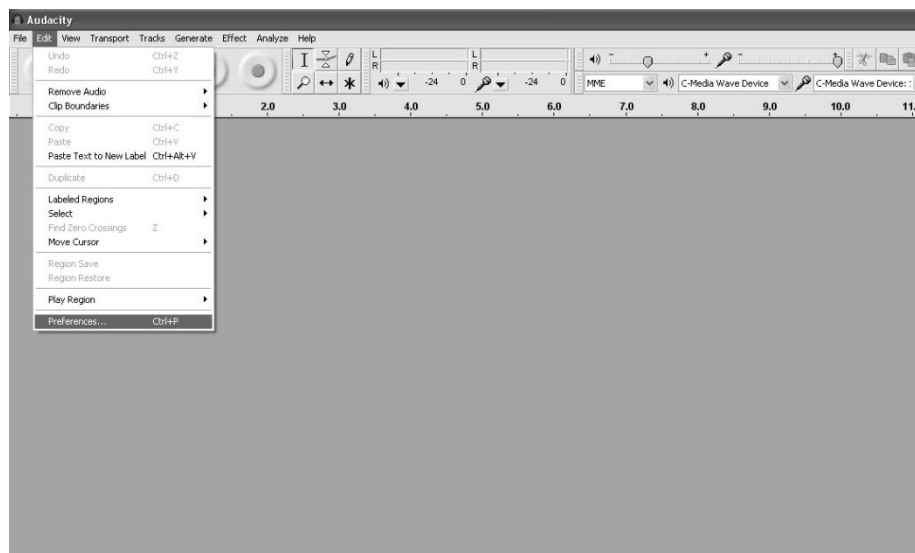
## RUNNING AUDACITY SOFTWARE

**Note:** Please review the software license and distribution restrictions found on the software disc. Use of the Audacity software is subject to those conditions and restriction. For additional help with recording and editing music by using the Audacity software, please visit <http://audacity.sourceforge.net/>

- Run the Audacity from the Windows start menu or double click the Audacity icon on your computer desktop.
- The Audacity main screen appears. You will find the Record, Play, Pause, Stop, Skip to Start and Skip to End control buttons here. Use the File, Edit, View, Transport, Tracks, Generate, Effect and Analyze menus from your computer screen to Save, Export or Edit the music.

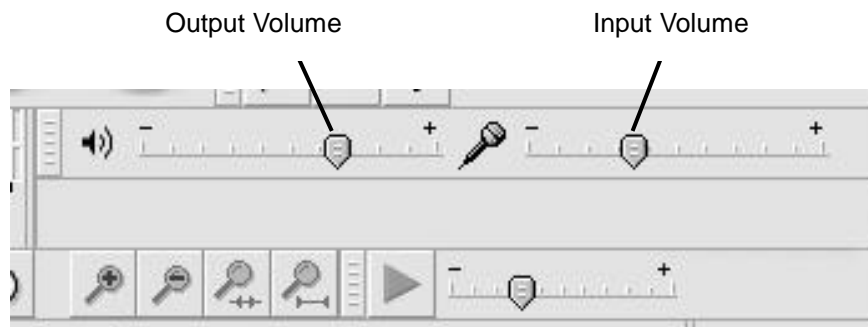


3. Click “Preferences” at the bottom of the Edit menu, you can set the Devices, Quality, and various settings here.

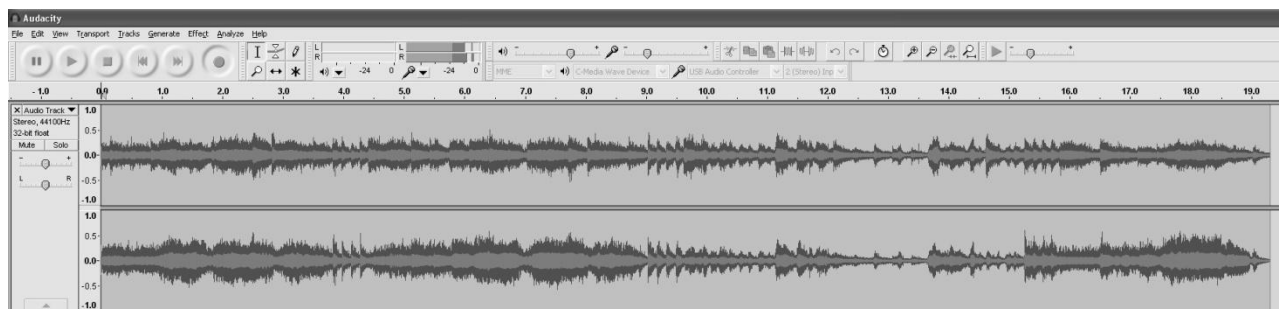


Note: If you couldn't find the "Microphone (USB Audio Controller or USB Audio Codec)" or "Microphone array to USB pnp audio device/controller" from the Device list, close the Audacity Software, make sure the usb Turntable is connected, then re-start Audacity Software and try again.







- Adjust the input and output volume by sliding the Input and Output Volume bars.



- Click the record button to start recording, left and right tracks will show on your computer screen. If you cannot see the sound waves appear on the Interface when recording, adjust the Input volume bar.



- Use the Audacity control panel to record or listen the music you have recorded

- Click  button to start recording.
- Click the  button to skip to start;
- Click the  button to skip to end;
- Click the  button to play;
- Click the  button to pause;
- Click the  button to stop.



### EXPORT THE MUSIC FILES TO WAV OR MP3 FORMAT

Once you have finished recording, make sure you save your recorded music to the computer.

1. Click File menu and move down to “Export” to convert the file to WAV format or MP3 format.
2. Click on WAV or MP3 format you want to save the music as in pull down menu of “Save as type” field, and you will be asked for the file name of your recorded music

**NOTE:**

Audacity does not export MP3 files directly. If you want to encode your recorded music to MP3 format, you need to click the “Download” in POP UP window to download the LAME MP3 encoder either in the CD provided or under the page “Other Audacity Downloads for Windows” of the website <http://audacity.sourceforge.net/>

**INSTALL THE MP3 ENCODER**

1. Insert the included CD into your computer and select “Audacity 2.0(Windows 2000, XP, Vista, 7/8)” under “Windows” folder.
2. Open the folder and select “Plug-ins”.
3. Double click the “Lame\_v3.99.3\_for\_windows.exe” file under “Plug-ins” folder to start install the program.

**Note:** Normally, Audacity will automatically locate the Lame file that you installed. However, if you change default directory of Lame program, you may need to manually locate it by using Audacity→Edit→Preference→Libraries and the click “Locate” button on computer screen to browse “lame\_enc.dll” file where the directory you have installed. See Fig. below and click OK to finish manual installation.



**CARE AND MAINTENANCE**

1. Avoid operating your unit under direct sunlight or in hot, humid or dusty places.
2. Keep your unit away from heating appliances and sources of electrical noise such as fluorescent lamps or motors.
3. Unplug the unit from the electrical power outlet immediately in case of malfunction.

**CLEANING THE UNIT**

- To prevent fire or shock hazard, disconnect your unit from the AC power source when cleaning.

- The finish on the unit may be cleaned with a dust cloth and cared for as other furniture, Use caution when cleaning and wiping the plastic parts.
- If the cabinet becomes dusty wipe it with a soft dry dust cloth. Do not use any wax or polish sprays on the cabinet.
- If the front panel becomes dirty or smudged with fingerprints it may be cleaned with a soft cloth slightly dampened with a mild soap and water solution. Never use abrasive cloths or polishes as these will damage the finish of your unit.

**CAUTION:** Never allow any water or other liquids to get inside the unit while cleaning.

## TROUBLESHOOTING GUIDE

	Problem	Cause	Solution
<b>THE WHOLE UNIT</b>	Power does not come on when the unit is switched on.	Unit is unplugged.	Connect the unit to the AC power supply.
	No sound comes out of the speakers.	The volume is turned down (to MIN).	Adjust the volume.
		The input selector does not match the playback source.	Re-select the desired input source.
	The sound is distorted.	The unit is too close to a TV set or another similar appliance.	Turn off the TV or other appliances and relocate the unit.
	The unit does not respond.	External factors such as ESD (electro-static discharge) can affect the unit.	Remove the power cord and all other power supplies from the device, then plug in the unit again after one minute.
<b>PHONO PLAYER</b>	The sound is distorted when playing the record.	The stylus is not placed in the centre.	Place the stylus in the centre.
	The sound is distorted when used for a period of time.	The stylus is damaged.	Please insert a new stylus.

# SPECIFICATION

## Specifications

### AMPLIFIER section

Output power.....	0.4W + 0.4W
Frequency response.....	60 TO 20,000 Hz (+3, -2dB)

### PHONOGRAPH section


Motor.....	DC servo motor
Drive system.....	Belt drive
Speeds.....	33-1/3 rpm, 45 rpm and 78 rpm
Wow and flutter.....	Less than 0.35% (WTD)
S/N ratio.....	More than 35 dB
Cartridge type.....	Ceramic stereo cartridge
Stylus.....	TL3034
Output level.....	130mV (±50 mV 1 KHz -10dB)

BLUETOOTH SYSTEM section	10 metres
--------------------------	-----------

### SPEAKER SYSTEM section

Type.....	1-way
Impedance.....	4 ohms
Input power.....	Max 2W

### GENERAL

Power requirements.....	AC-DC Adaptor : Input AC 120V ~ 60Hz
Main Unit.....	DC input DC 5V  1000mA
Power consumption.....	3W
Dimensions (WxHxD) .....	355 x 280 x 130 mm
Weight.....	2.69 kg (approx.)
Standard accessories.....	Instruction Manual 45 RPM adaptor

\* This device is subject to continual improvements, and so the design, specification and manual are subject to change without prior notice.

**Do not dispose of electrical devices with the ordinary waste.**

- **Bring them to a collection point.**
- **Some parts contained in these appliances may be hazardous to human and animal health, as well as the environment.**