

## Product summary: IP Video Indoor Station A1101



The product "IP Video Indoor Station" is a device to monitor and control IP Video Door Station (watch, listen, talk, open door etc.).



Product photo

Integrated Radio/Wireless modules: 2.4 GHz WiFi

Power supply: 15 VDC or PoE IEEE802.3.af

Network interfaces: Ethernet with cable and WiFi

Required certifications: CE (RED), ROHS 2.0, FCC (ID), IC (ID), EAC

Full product datasheet: [https://www.doorbird.com/downloads/datasheet/datasheet\\_a1101\\_en.pdf](https://www.doorbird.com/downloads/datasheet/datasheet_a1101_en.pdf)



**Base Data: IP Video Indoor Station A1101**

**Product name / EUT name:** IP Video Indoor Station

**Trademark:** DoorBird

**Model Number / Name:** A1101

**Prepared for:** Bird Home Automation GmbH

**Address:** Joachimsthaler Str. 12, 10719 Berlin, Germany

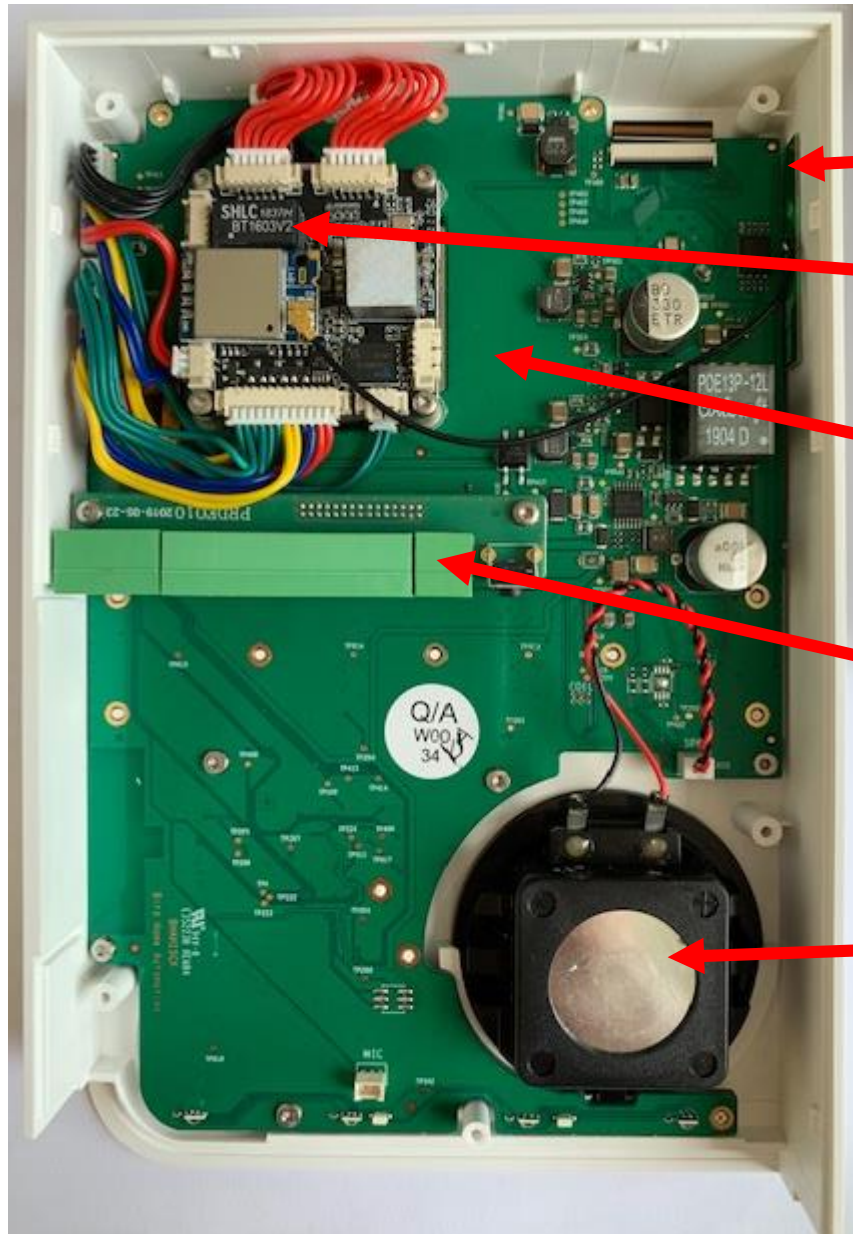
**Manufacturer:** Bird Home Automation GmbH

**Address:** Joachimsthaler Str. 12, 10719 Berlin, Germany

**USA, FCC Grantee Code + Product code:** 2AD99B008D

**Canada, IC Company number (CN) + Unique Product Number (UPN):** 20208-B008D

## Boards / Inner Components: IP Video Indoor Station A1101



**2.4 GHz WiFi antenna thread**

**Multi Purpose Board**

Block Diagram, Operational Description (Explanation of Block Diagrams) and BoM / Key components provided by: [liaoxtoli@hichip.net](mailto:liaoxtoli@hichip.net)

**Main Board Board**

Block Diagram, Operational Description (Explanation of Block Diagrams) and BoM / Key components provided by: Bird Home Automation GmbH.

**Adapter Board**

Block Diagram, Operational Description (Explanation of Block Diagrams) and BoM / Key components provided by: Bird Home Automation GmbH.

**8 Ohm Speaker**

## Boards / Inner Components: IP Video Indoor Station A1101



4" display

## Power supply: IP Video Indoor Station A1101



### Option 1



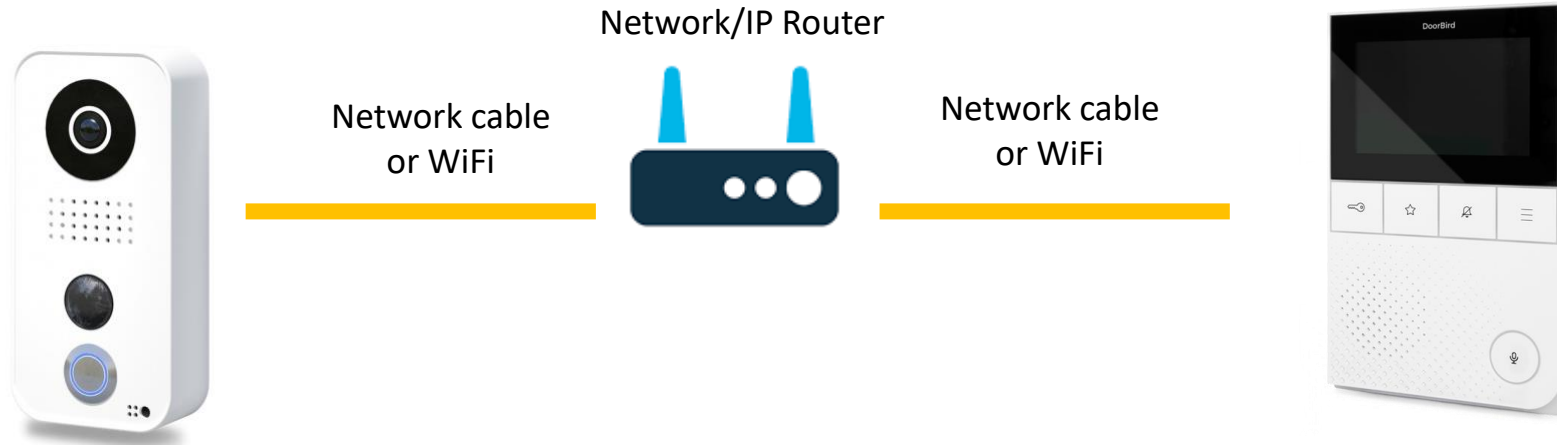
Any applicable certified (e.g. CE, UL..) power supply with 15 VDC @ 1 Ampere output, e.g. UT20 (available in different colors, e.g. white)

### Option 2



Any IEEE802.3.af conformal power supply (e.g. PoE injector / PoE Switch)

## Putting into operation: IP Video Indoor Station A1101



**Any** compatible Network/IP Door station  
(Power supply: PoE IEEE802.3.af or 15 VDC)

Network/IP Video Indoor Station A1101  
(Power supply: PoE IEEE802.3.af or 15 VDC)

Easiest way to put the Network/IP Indoor Station A1101 into operation:

- A Network/IP router
- Any compatible DoorBird Network IP/Door Station (e.g. D10x product series, D11x product series, D20x product, series, D21x product series, D22x product series etc.)
- A DoorBird IP Video Indoor Station "A1101"
- Free App "DoorBird", available at Apple App Store and Goole Play Store

If you need help/advice: please contact by email [certlab-support@doorbird.com](mailto:certlab-support@doorbird.com)

## FCC WARNING

This device complies with part 15 of the FCC Rules. Operation is subject to the following two conditions: (1) this device may not cause harmful interference, and (2) this device must accept any interference received, including interference that may cause undesired operation.

Any changes or modifications not expressly approved by the party responsible for compliance could void the user's authority to operate the equipment.

NOTE: This equipment has been tested and found to comply with the limits for a Class B digital device, pursuant to Part 15 of the FCC Rules. These limits are designed to provide reasonable protection against harmful interference in a residential installation. This equipment generates, uses and can radiate radio frequency energy and, if not installed and used in accordance with the instructions, may cause harmful interference to radio communications.

However, there is no guarantee that interference will not occur in a particular installation.

If this equipment does cause harmful interference to radio or television reception, which can be determined by turning the equipment off and on, the user is encouraged to try to correct the interference by one or more of the following measures:

- Reorient or relocate the receiving antenna.
- Increase the separation between the equipment and receiver.
- Connect the equipment into an outlet on a circuit different from that to which the receiver is connected.
- Consult the dealer or an experienced radio/TV technician for help.

To maintain compliance with FCC's RF Exposure guidelines, This equipment should be installed and operated with minimum distance between 20cm the radiator your body: Use only the supplied antenna.