

EXHIBIT 4

1.1.1.1 Section 2.1033 (c)(11) EQUIPMENT IDENTIFICATION LABEL

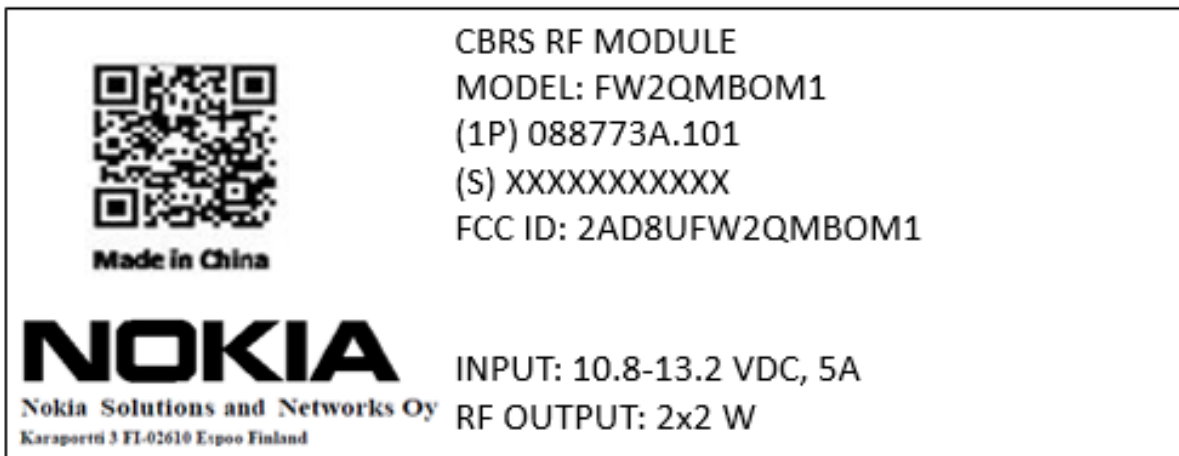
A photograph or drawing of the equipment identification plate or label showing the information to be placed thereon.

Response

A drawing/photo showing the information and placement of the equipment identification label to be affixed for the EUT is attached to this exhibit.

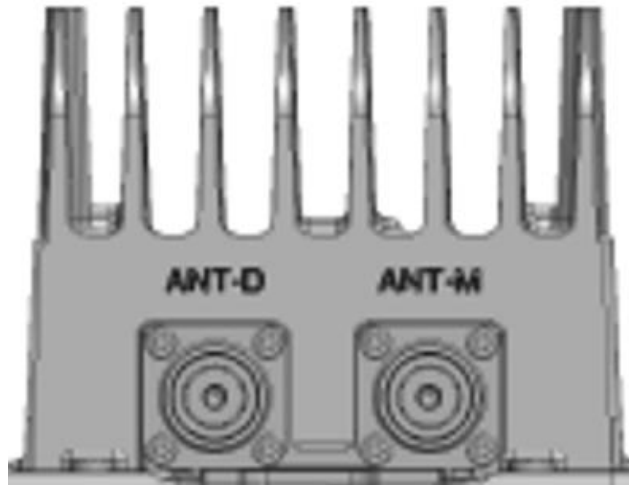
By previous request the label for the Host equipment is attached as well.

FW2QMBOM1 RF Module Label

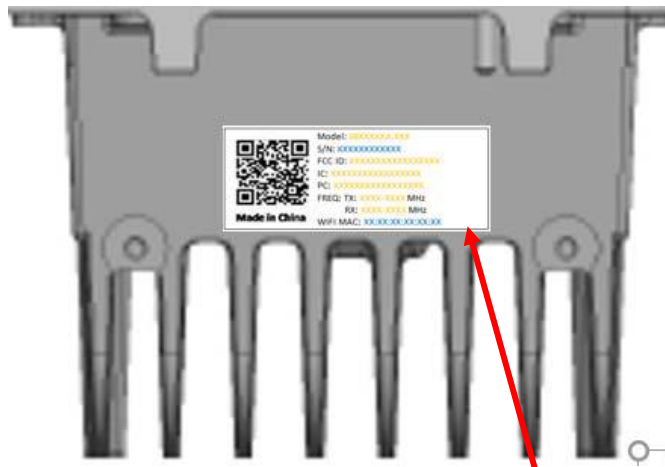






FW2QMBOM1 RF Module Label Placement & Detail



Bottom



Top

	CBRS RF MODULE
	MODEL: FW2QMBOM1
	(1P) 088773A.101
	(S) XXXXXXXXXXXX
Made in China	FCC ID: 2AD8UFW2QMBOM1
NOKIA Nokia Solutions and Networks Oy Karaportti 3 FI-02610 Espoo Finland	INPUT: 10.8-13.2 VDC, 5A
	RF OUTPUT: 2x2 W

Host Label:

By request the host label affixed on the integrated unit is below. The RF module label is visible independently.

