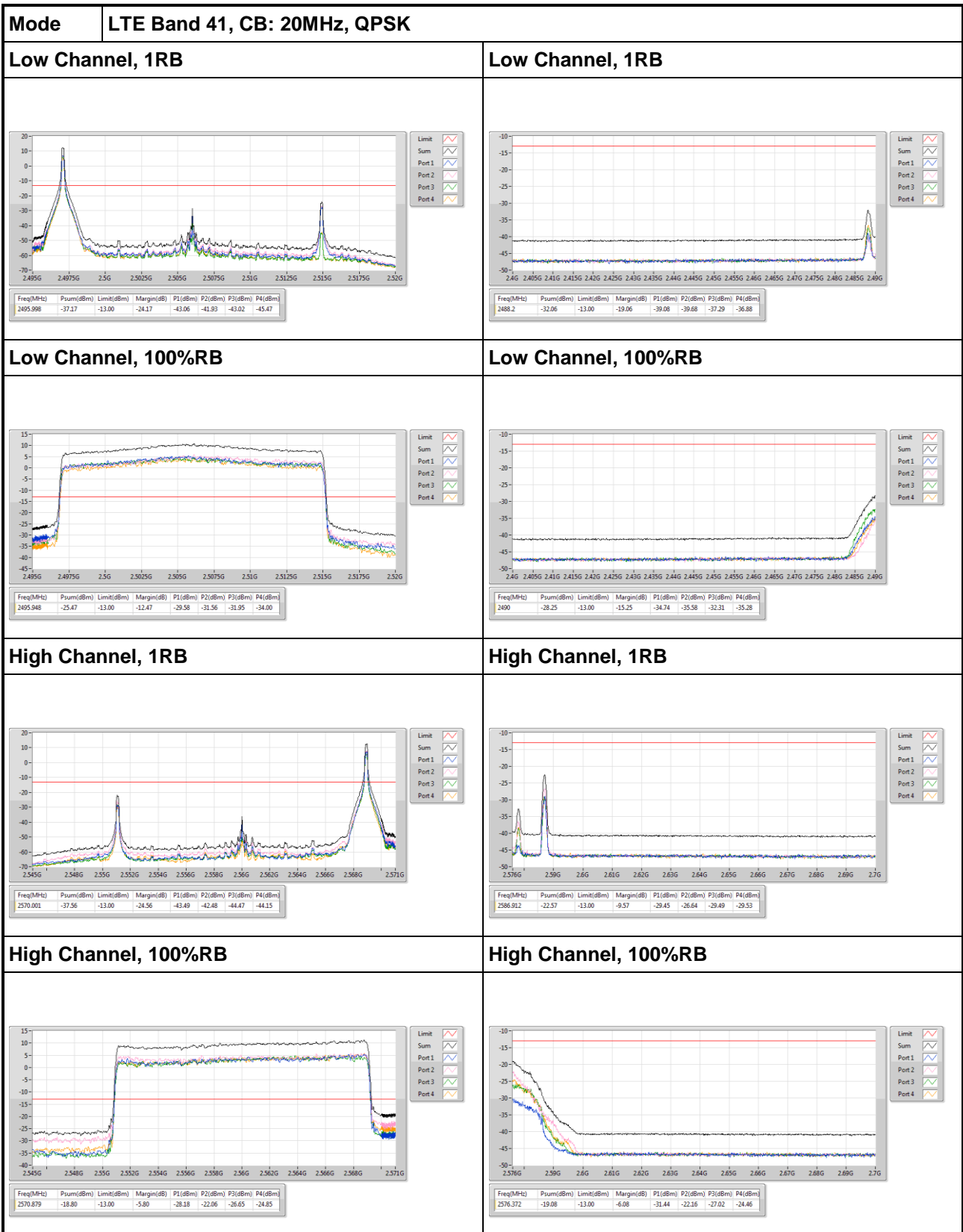
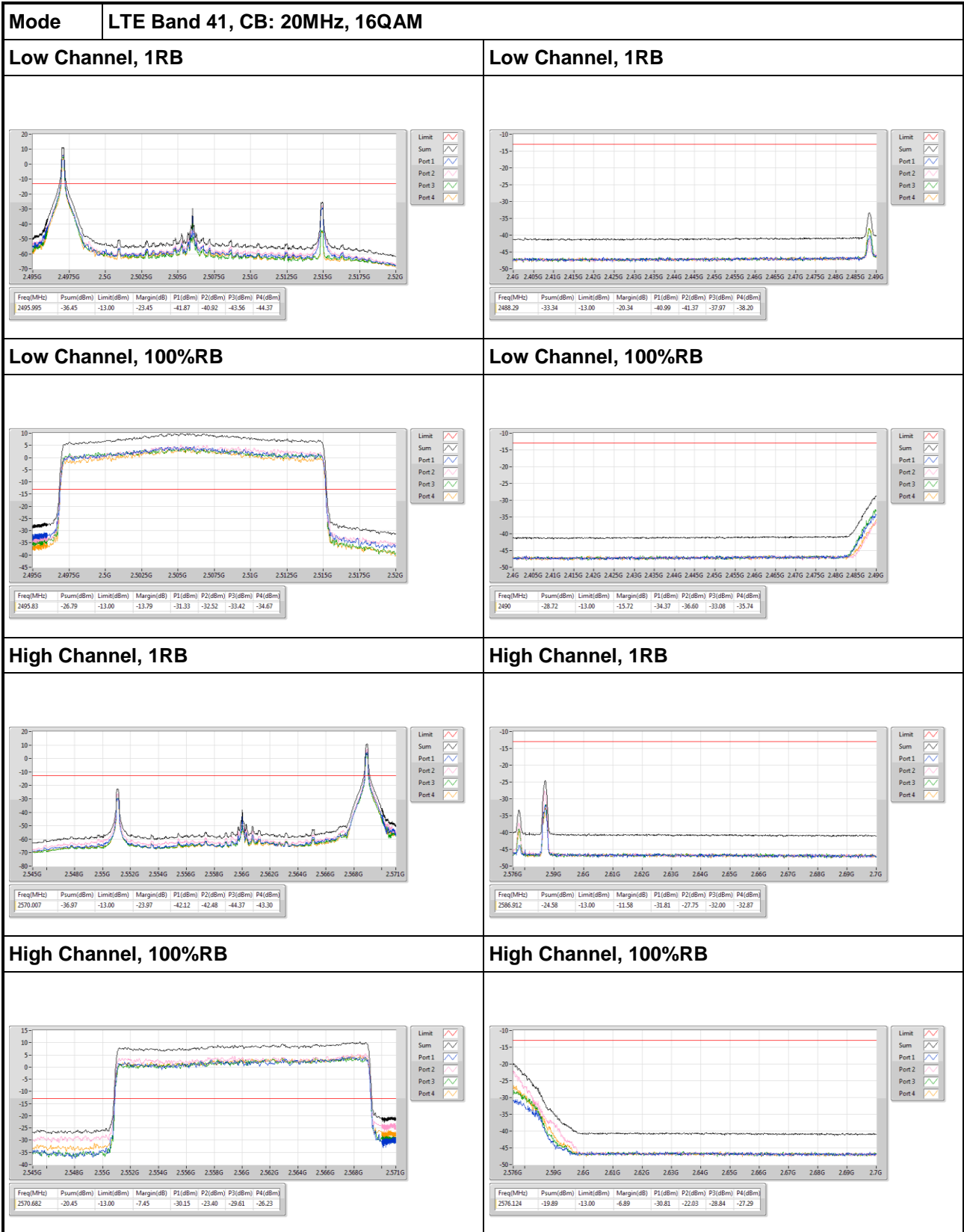
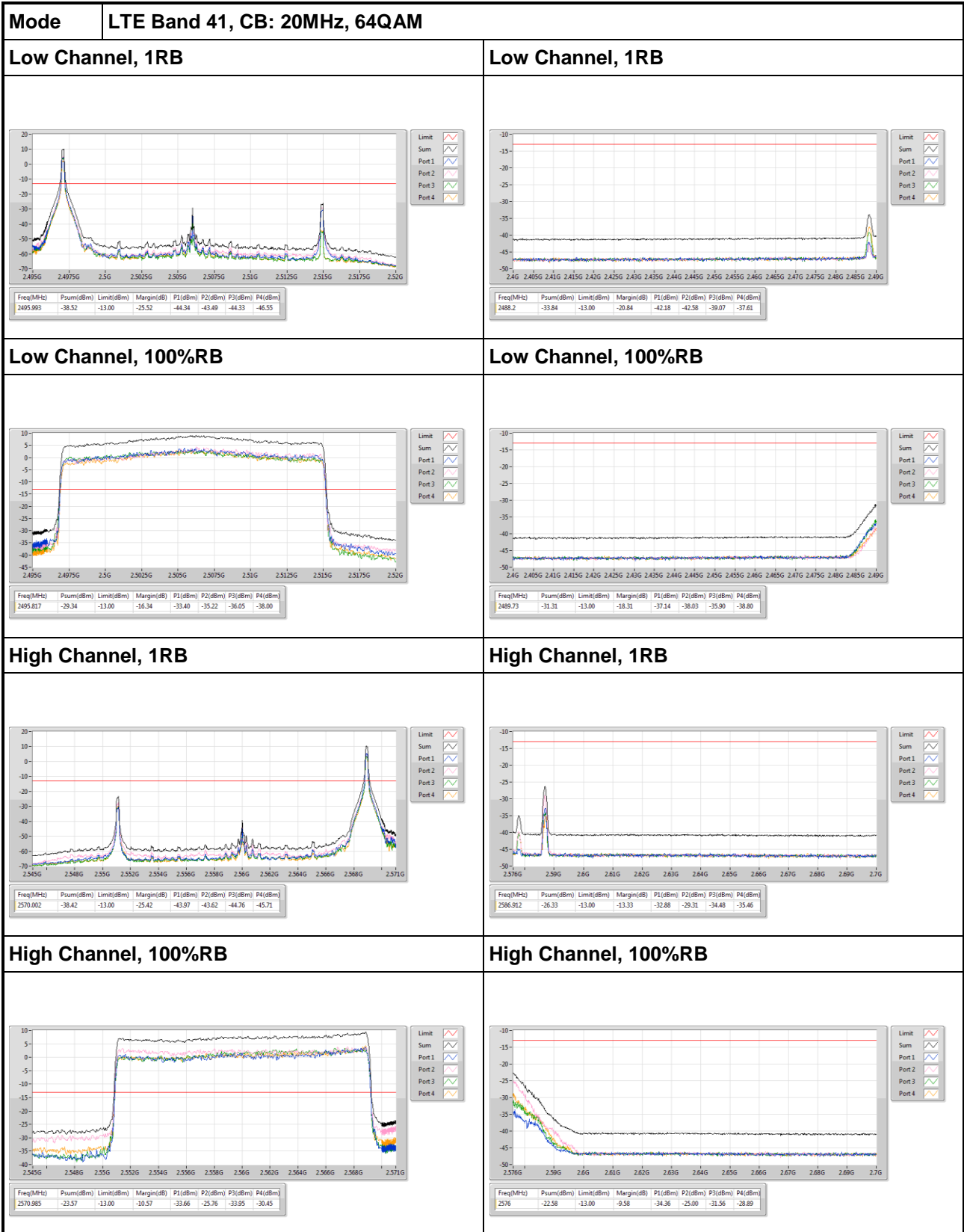


LTE Band 41, CB: 20MHz







3.4.5 Measured Channel Edge Result_CDD mode

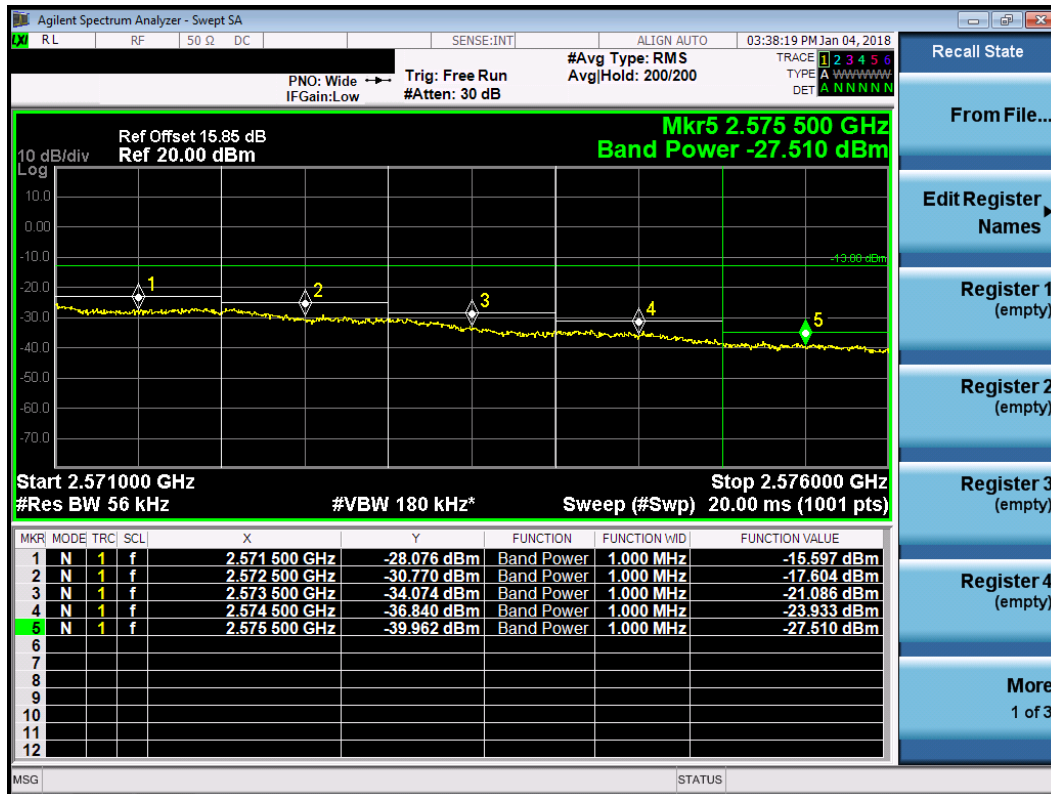
LTE Band 41, CB: 5MHz

Measured Channel Edge Result										
Modulation	Freq. (MHz)	RB Size	RB offset	Range (MHz)	ANT 0 (dBm)	ANT 1 (dBm)	ANT 2 (dBm)	ANT 3 (dBm)	Total (dBm)	Limit (dBm)
QPSK	2498.5	1	0	2495~2494	-32.262	-31.209	-31.910	-32.598	-25.94	-13.00
				2494~2493	-40.984	-40.110	-40.440	-41.186	-34.64	-13.00
				2493~2492	-35.030	-34.503	-36.236	-37.036	-29.57	-13.00
				2492~2491	-35.342	-34.960	-37.034	-37.776	-30.10	-13.00
				2491~2490	-45.128	-44.887	-44.552	-45.134	-38.90	-13.00
	2498.5	25	0	2495~2494	-23.718	-24.576	-21.559	-25.855	-17.62	-13.00
				2494~2493	-27.206	-27.508	-25.127	-29.079	-20.98	-13.00
				2493~2492	-31.678	-30.367	-29.392	-32.257	-24.76	-13.00
				2492~2491	-37.548	-32.791	-36.035	-35.437	-29.08	-13.00
				2491~2490	-40.298	-35.368	-38.682	-37.501	-31.57	-13.00
	2567.5	1	24	2571~2572	-33.821	-30.940	-34.230	-33.327	-26.86	-13.00
				2572~2573	-41.314	-39.206	-41.574	-40.939	-34.63	-13.00
				2573~2574	-42.617	-40.711	-37.975	-36.827	-32.95	-13.00
				2574~2575	-43.340	-41.460	-39.267	-38.145	-34.10	-13.00
				2575~2576	-45.261	-44.427	-45.169	-45.116	-38.96	-13.00
	2567.5	25	0	2571~2572	-15.597	-22.880	-20.484	-21.700	-13.15	-13.00
				2572~2573	-17.604	-24.876	-22.972	-24.125	-15.30	-13.00
				2573~2574	-21.086	-28.677	-27.317	-28.768	-19.09	-13.00
				2574~2575	-23.933	-33.441	-32.991	-34.566	-22.72	-13.00
				2575~2576	-27.510	-37.099	-38.029	-39.090	-26.48	-13.00

Worst Plot of QPSK, Low Channel



Worst Plot of QPSK, High Channel



Measured Channel Edge Result										
Modulation	Freq. (MHz)	RB Size	RB offset	Range (MHz)	ANT 0 (dBm)	ANT 1 (dBm)	ANT 2 (dBm)	ANT 3 (dBm)	Total (dBm)	Limit (dBm)
16QAM	2498.5	1	0	2495~2494	-33.187	-31.670	-32.639	-33.195	-26.61	-13.00
				2494~2493	-41.776	-40.662	-41.319	-41.662	-35.31	-13.00
				2493~2492	-36.118	-35.140	-37.251	-38.113	-30.49	-13.00
				2492~2491	-36.668	-35.731	-38.131	-38.955	-31.17	-13.00
				2491~2490	-45.263	-45.088	-45.099	-45.208	-39.14	-13.00
	2498.5	25	0	2495~2494	-29.189	-26.214	-24.260	-28.230	-20.53	-13.00
				2494~2493	-32.522	-29.170	-28.263	-31.523	-24.02	-13.00
				2493~2492	-35.946	-32.296	-32.771	-35.004	-27.73	-13.00
				2492~2491	-39.300	-35.399	-38.122	-37.757	-31.38	-13.00
				2491~2490	-40.629	-37.833	-39.821	-39.184	-33.22	-13.00
	2567.5	1	24	2571~2572	-34.556	-31.843	-34.837	-33.896	-27.59	-13.00
				2572~2573	-41.628	-39.793	-41.862	-41.274	-35.04	-13.00
				2573~2574	-42.995	-40.968	-39.136	-37.920	-33.83	-13.00
				2574~2575	-43.669	-41.927	-40.303	-39.037	-34.88	-13.00
				2575~2576	-45.294	-44.569	-45.227	-45.198	-39.04	-13.00
	2567.5	25	0	2571~2572	-23.747	-16.376	-23.672	-24.334	-14.53	-13.00
				2572~2573	-26.605	-18.558	-26.641	-26.800	-16.91	-13.00
				2573~2574	-30.624	-22.122	-31.531	-31.110	-20.72	-13.00
				2574~2575	-36.100	-26.877	-37.401	-35.621	-25.60	-13.00
				2575~2576	-38.823	-30.200	-39.481	-38.066	-28.68	-13.00

Worst Plot of 16QAM, Low Channel



Worst Plot of 16QAM, High Channel



Measured Channel Edge Result										
Modulation	Freq. (MHz)	RB Size	RB offset	Range (MHz)	ANT 0 (dBm)	ANT 1 (dBm)	ANT 2 (dBm)	ANT 3 (dBm)	Total (dBm)	Limit (dBm)
64QAM	2498.5	1	0	2495~2494	-34.954	-33.671	-33.746	-34.665	-28.20	-13.00
				2494~2493	-42.426	-41.620	-41.596	-42.409	-35.97	-13.00
				2493~2492	-39.895	-38.448	-38.876	-40.447	-33.32	-13.00
				2492~2491	-40.186	-38.927	-39.270	-40.800	-33.71	-13.00
				2491~2490	-45.372	-45.277	-44.806	-45.334	-39.17	-13.00
	2498.5	25	0	2495~2494	-30.983	-26.818	-27.408	-31.220	-22.64	-13.00
				2494~2493	-34.131	-30.214	-31.265	-34.135	-26.07	-13.00
				2493~2492	-36.905	-34.223	-35.640	-37.001	-29.77	-13.00
				2492~2491	-39.421	-37.517	-39.417	-38.967	-32.74	-13.00
				2491~2490	-40.408	-39.215	-40.786	-40.179	-34.09	-13.00
	2567.5	1	24	2571~2572	-38.129	-35.605	-38.783	-37.990	-31.43	-13.00
				2572~2573	-43.138	-41.517	-43.406	-43.079	-36.70	-13.00
				2573~2574	-43.432	-41.530	-41.606	-40.160	-35.51	-13.00
				2574~2575	-43.917	-42.188	-42.211	-41.021	-36.20	-13.00
				2575~2576	-45.387	-44.741	-45.227	-45.298	-39.14	-13.00
	2567.5	25	0	2571~2572	-26.850	-18.091	-26.816	-27.804	-16.71	-13.00
				2572~2573	-29.616	-20.642	-29.935	-30.319	-19.33	-13.00
				2573~2574	-33.462	-24.823	-34.113	-33.540	-23.40	-13.00
				2574~2575	-36.958	-29.917	-38.012	-36.655	-27.97	-13.00
				2575~2576	-38.912	-32.148	-39.759	-38.464	-30.06	-13.00

Worst Plot of 64QAM, Low Channel



Worst Plot of 64QAM, High Channel



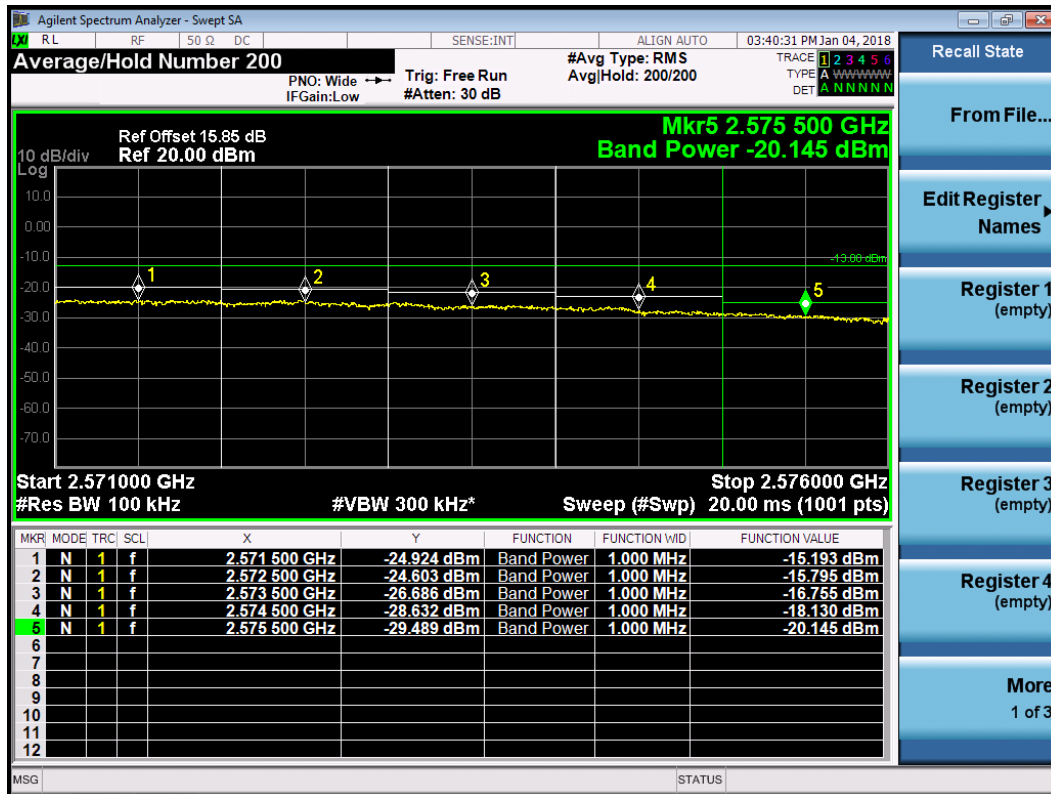
LTE Band 41, CB: 10MHz

Measured Channel Edge Result										
Modulation	Freq. (MHz)	RB Size	RB offset	Range (MHz)	ANT 0 (dBm)	ANT 1 (dBm)	ANT 2 (dBm)	ANT 3 (dBm)	Total (dBm)	Limit (dBm)
QPSK	2501.0	1	0	2495~2494	-33.592	-32.831	-32.477	-33.381	-27.03	-13.00
				2494~2493	-39.851	-39.263	-38.545	-39.526	-33.25	-13.00
				2493~2492	-40.272	-39.642	-35.820	-37.152	-31.82	-13.00
				2492~2491	-43.912	-43.193	-42.414	-43.086	-37.10	-13.00
				2491~2490	-44.925	-44.723	-44.074	-44.838	-38.61	-13.00
	2501.0	50	0	2495~2494	-29.635	-30.640	-24.777	-27.947	-21.62	-13.00
				2494~2493	-31.373	-32.934	-26.806	-30.118	-23.67	-13.00
				2493~2492	-32.910	-34.533	-28.675	-31.954	-25.44	-13.00
				2492~2491	-34.693	-36.256	-30.659	-33.639	-27.29	-13.00
				2491~2490	-36.786	-38.226	-32.930	-35.509	-29.39	-13.00
	2565.0	1	49	2571~2572	-31.756	-29.401	-32.622	-31.724	-25.18	-13.00
				2572~2573	-38.137	-35.748	-38.423	-37.800	-31.37	-13.00
				2573~2574	-39.049	-32.462	-38.670	-38.644	-30.16	-13.00
				2574~2575	-43.572	-40.296	-43.481	-43.503	-36.44	-13.00
				2575~2576	-44.770	-43.138	-44.451	-44.648	-38.18	-13.00
	2565.0	50	0	2571~2572	-15.193	-21.457	-22.736	-24.158	-13.32	-13.00
				2572~2573	-15.795	-22.059	-23.388	-25.103	-13.95	-13.00
				2573~2574	-16.755	-23.233	-24.361	-25.878	-14.93	-13.00
				2574~2575	-18.130	-24.675	-25.635	-26.847	-16.27	-13.00
				2575~2576	-20.145	-26.627	-27.655	-28.738	-18.27	-13.00

Worst Plot of QPSK, Low Channel

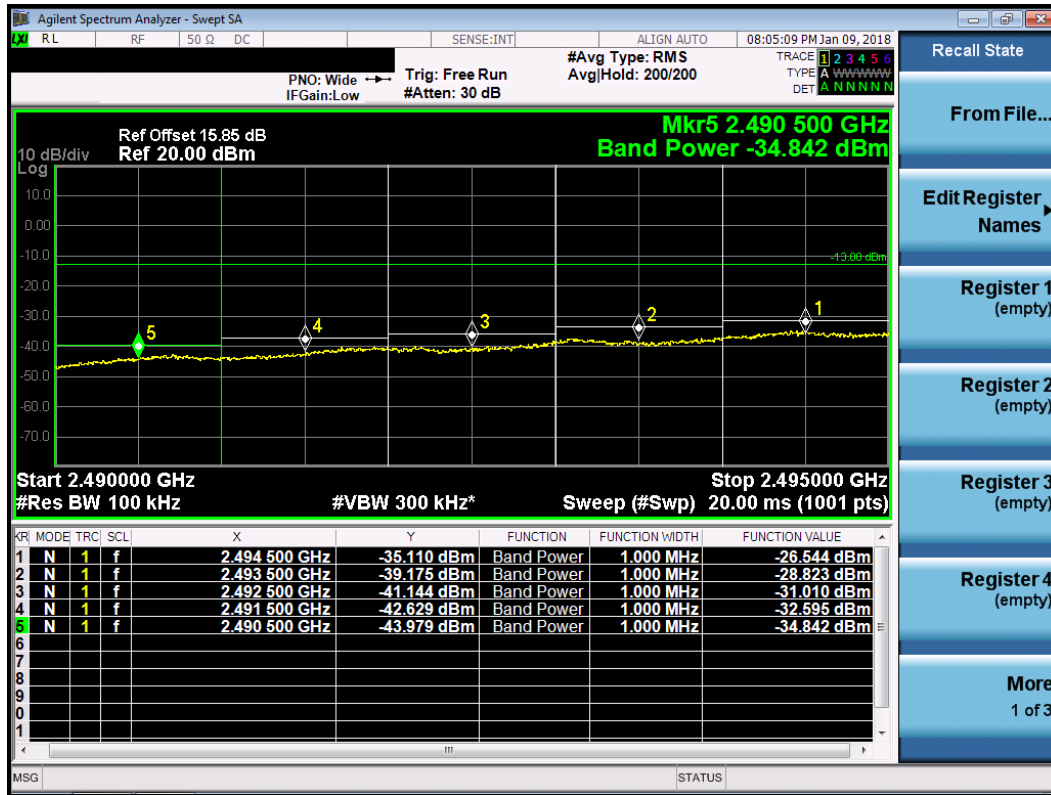


Worst Plot of QPSK, High Channel

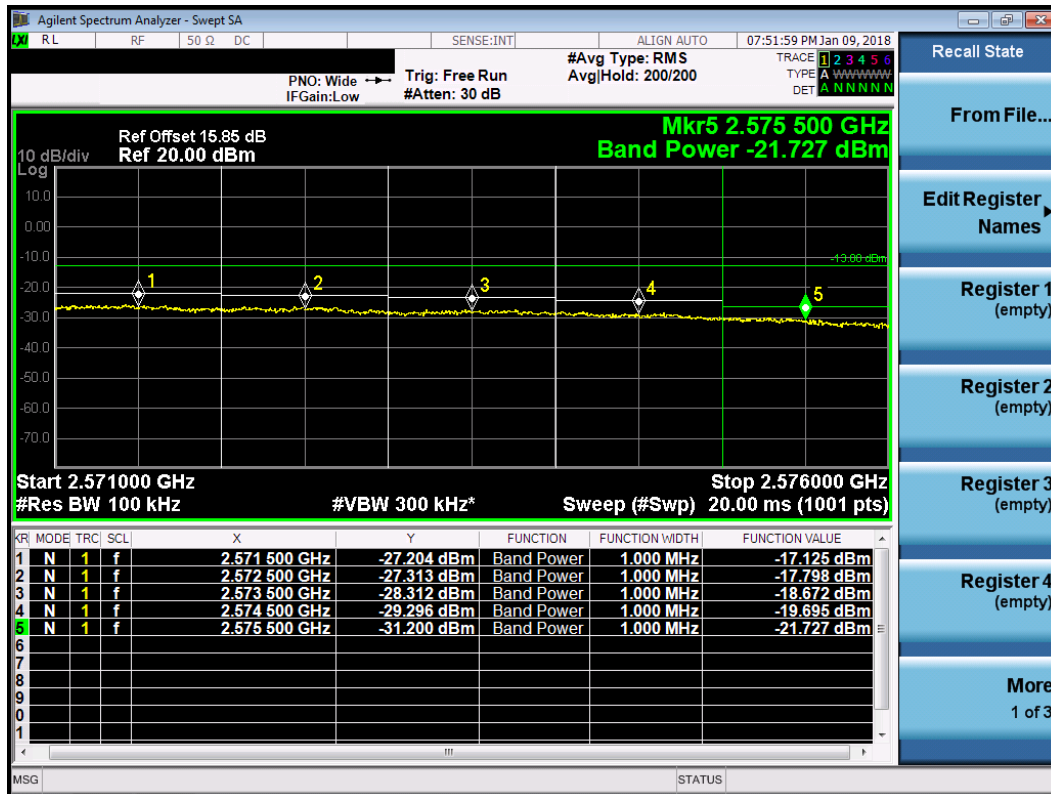


Measured Channel Edge Result										
Modulation	Freq. (MHz)	RB Size	RB offset	Range (MHz)	ANT 0 (dBm)	ANT 1 (dBm)	ANT 2 (dBm)	ANT 3 (dBm)	Total (dBm)	Limit (dBm)
16QAM	2501.0	1	0	2495~2494	-33.699	-32.598	-32.624	-33.389	-27.03	-13.00
				2494~2493	-39.989	-39.337	-39.095	-39.698	-33.50	-13.00
				2493~2492	-40.769	-40.084	-37.245	-38.060	-32.78	-13.00
				2492~2491	-44.133	-43.557	-43.619	-43.750	-37.74	-13.00
				2491~2490	-45.042	-44.861	-44.863	-44.963	-38.91	-13.00
	2501.0	50	0	2495~2494	-29.794	-30.078	-26.544	-29.514	-22.70	-13.00
				2494~2493	-31.747	-32.198	-28.823	-31.677	-24.86	-13.00
				2493~2492	-33.449	-33.951	-31.010	-33.966	-26.89	-13.00
				2492~2491	-34.973	-35.608	-32.595	-35.611	-28.48	-13.00
				2491~2490	-36.789	-37.800	-34.842	-37.273	-30.50	-13.00
	2565.0	1	49	2571~2572	-31.873	-29.455	-32.733	-31.885	-25.28	-13.00
				2572~2573	-38.127	-35.938	-38.716	-37.893	-31.51	-13.00
				2573~2574	-39.964	-34.317	-39.243	-38.999	-31.45	-13.00
				2574~2575	-43.654	-41.179	-43.926	-43.596	-36.91	-13.00
				2575~2576	-44.849	-43.604	-44.918	-44.780	-38.48	-13.00
	2565.0	50	0	2571~2572	-27.612	-17.125	-25.746	-22.650	-15.34	-13.00
				2572~2573	-28.573	-17.798	-26.780	-23.531	-16.10	-13.00
				2573~2574	-29.627	-18.672	-28.096	-24.880	-17.11	-13.00
				2574~2575	-30.830	-19.695	-29.503	-26.162	-18.21	-13.00
				2575~2576	-32.865	-21.727	-31.523	-28.294	-20.26	-13.00

Worst Plot of 16QAM, Low Channel

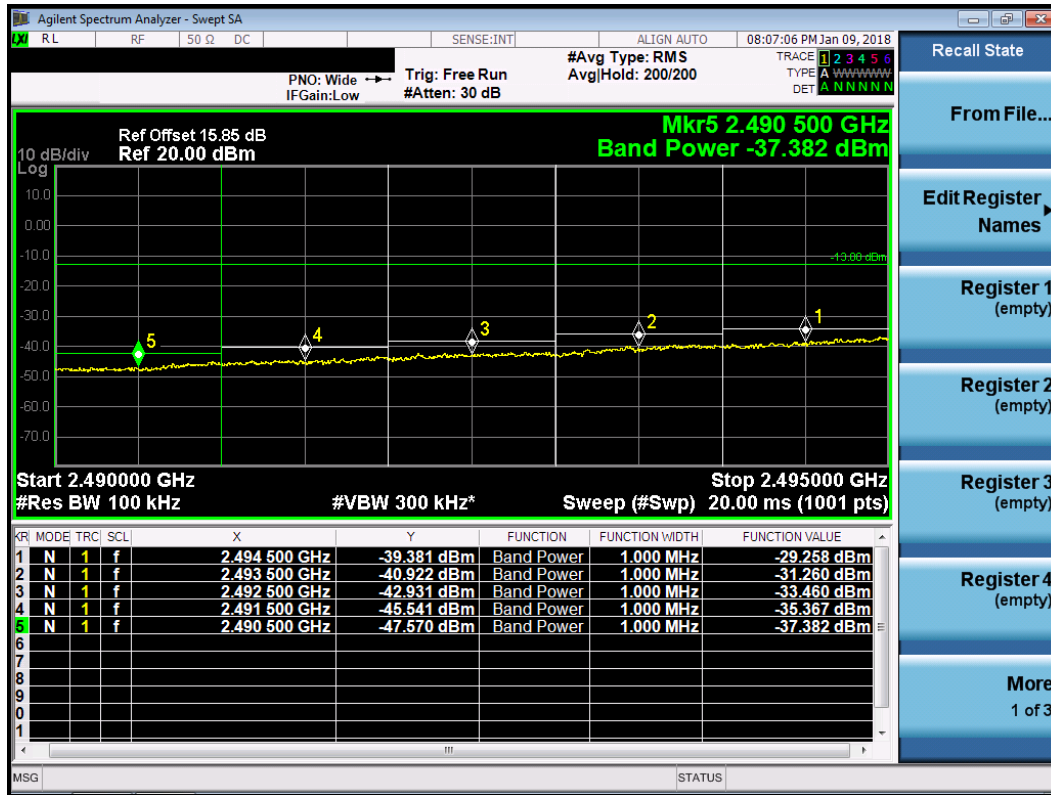


Worst Plot of 16QAM, High Channel

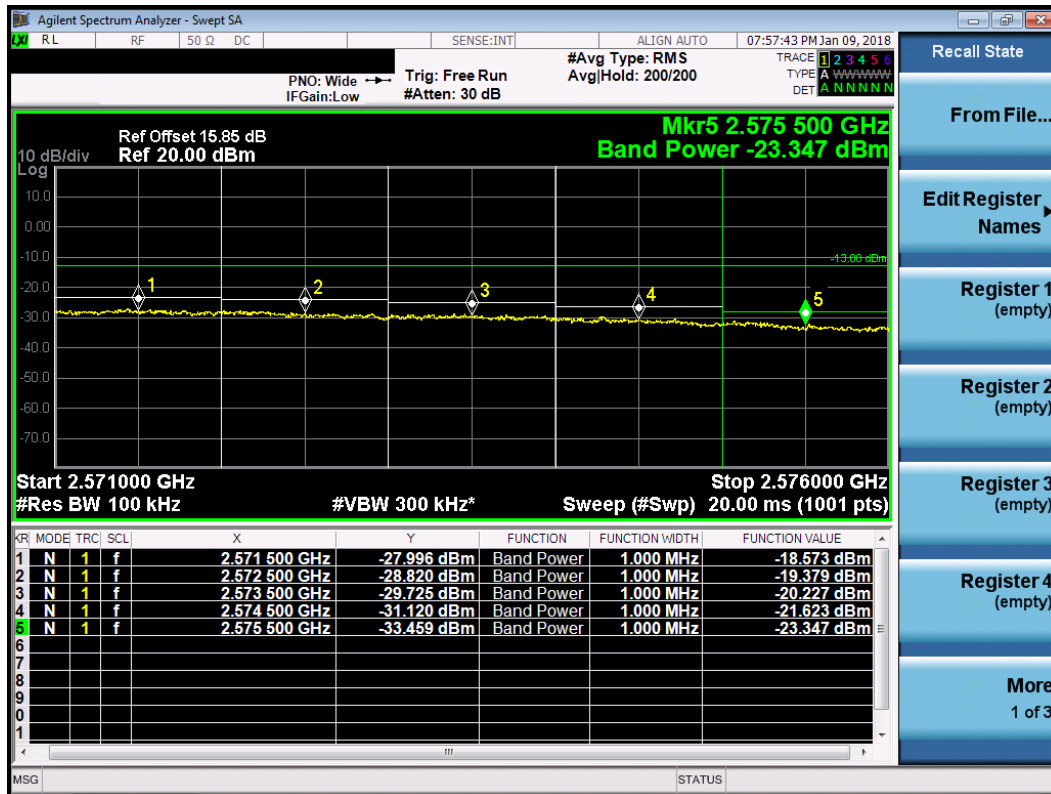


Measured Channel Edge Result										
Modulation	Freq. (MHz)	RB Size	RB offset	Range (MHz)	ANT 0 (dBm)	ANT 1 (dBm)	ANT 2 (dBm)	ANT 3 (dBm)	Total (dBm)	Limit (dBm)
64QAM	2501.0	1	0	2495~2494	-33.724	-32.990	-34.042	-34.791	-27.82	-13.00
				2494~2493	-40.113	-39.462	-40.039	-40.554	-34.00	-13.00
				2493~2492	-42.314	-41.410	-39.457	-39.787	-34.57	-13.00
				2492~2491	-44.465	-44.080	-44.326	-44.440	-38.30	-13.00
				2491~2490	-45.141	-44.918	-45.060	-45.104	-39.03	-13.00
	2501.0	50	0	2495~2494	-32.446	-32.013	-29.258	-32.201	-25.25	-13.00
				2494~2493	-34.299	-33.933	-31.260	-34.287	-27.22	-13.00
				2493~2492	-35.849	-35.684	-33.460	-36.319	-29.16	-13.00
				2492~2491	-37.040	-37.547	-35.367	-37.682	-30.78	-13.00
				2491~2490	-38.429	-39.211	-37.382	-39.134	-32.45	-13.00
	2565.0	1	49	2571~2572	-31.869	-29.726	-33.013	-32.207	-25.50	-13.00
				2572~2573	-38.233	-36.316	-38.943	-38.363	-31.82	-13.00
				2573~2574	-40.802	-36.027	-40.814	-40.681	-33.00	-13.00
				2574~2575	-43.824	-41.981	-43.873	-43.906	-37.29	-13.00
				2575~2576	-44.858	-43.835	-44.702	-44.899	-38.53	-13.00
	2565.0	50	0	2571~2572	-30.323	-18.573	-29.243	-25.829	-17.30	-13.00
				2572~2573	-31.249	-19.379	-30.484	-26.476	-18.12	-13.00
				2573~2574	-32.282	-20.227	-31.497	-27.691	-19.03	-13.00
				2574~2575	-33.725	-21.623	-32.821	-29.287	-20.45	-13.00
				2575~2576	-35.188	-23.347	-34.248	-31.187	-22.17	-13.00

Worst Plot of 64QAM, Low Channel



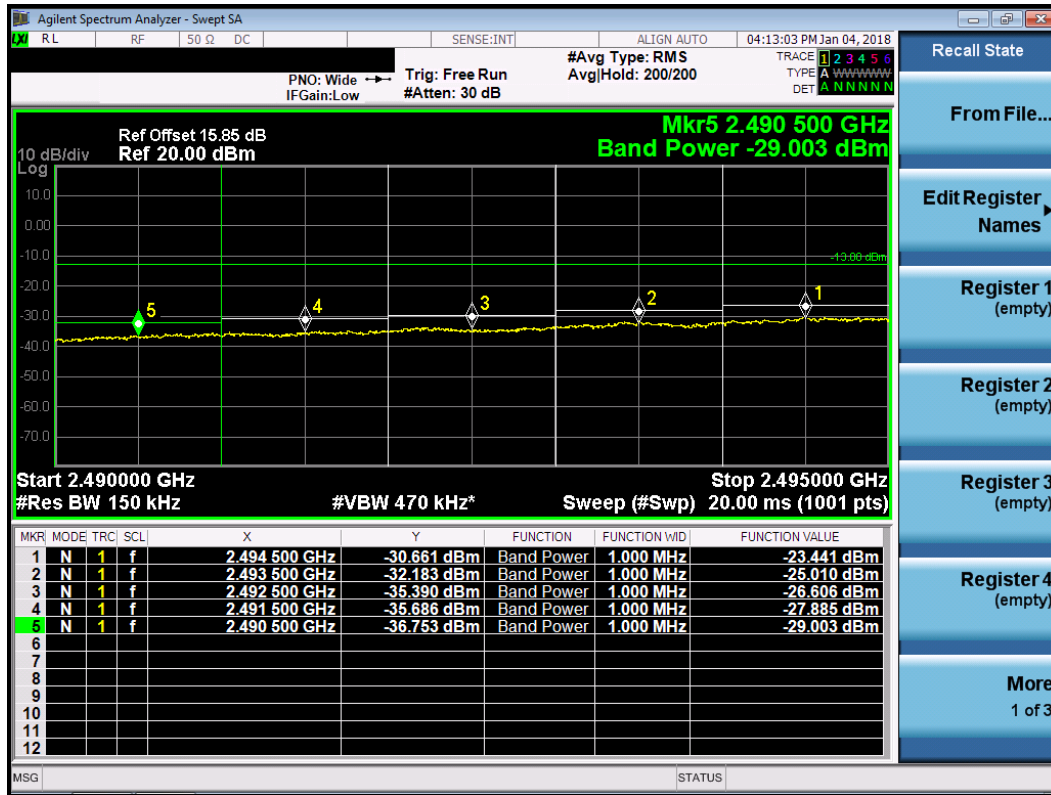
Worst Plot of 64QAM, High Channel



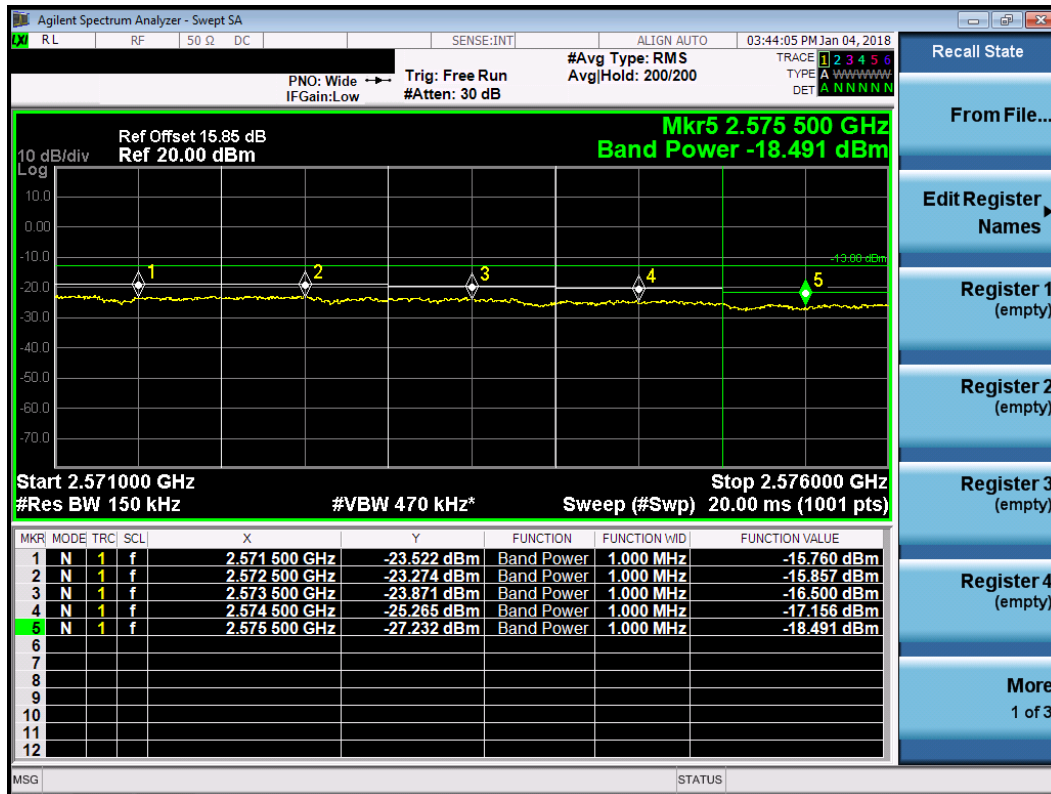
LTE Band 41, CB: 15MHz

Measured Channel Edge Result										
Modulation	Freq. (MHz)	RB Size	RB offset	Range (MHz)	ANT 0 (dBm)	ANT 1 (dBm)	ANT 2 (dBm)	ANT 3 (dBm)	Total (dBm)	Limit (dBm)
QPSK	2503.5	1	0	2495~2494	-32.878	-34.971	-33.547	-33.919	-27.74	-13.00
				2494~2493	-37.324	-38.800	-37.968	-37.924	-31.95	-13.00
				2493~2492	-40.309	-41.438	-40.815	-40.691	-34.77	-13.00
				2492~2491	-42.521	-43.406	-42.900	-42.725	-36.86	-13.00
				2491~2490	-37.565	-39.586	-37.568	-40.281	-32.56	-13.00
	2503.5	75	0	2495~2494	-27.114	-27.543	-23.441	-23.678	-19.02	-13.00
				2494~2493	-28.241	-28.769	-25.010	-25.128	-20.43	-13.00
				2493~2492	-29.782	-30.248	-26.606	-26.888	-22.06	-13.00
				2492~2491	-31.229	-31.662	-27.885	-28.339	-23.44	-13.00
				2491~2490	-32.947	-33.036	-29.003	-29.351	-24.66	-13.00
	2562.5	1	74	2571~2572	-30.138	-32.705	-31.683	-32.904	-25.69	-13.00
				2572~2573	-34.437	-36.684	-36.221	-36.975	-29.94	-13.00
				2573~2574	-37.629	-40.039	-39.659	-40.134	-33.22	-13.00
				2574~2575	-40.371	-42.609	-42.329	-42.388	-35.80	-13.00
				2575~2576	-36.642	-38.429	-40.918	-37.147	-31.98	-13.00
	2562.5	75	0	2571~2572	-15.760	-20.439	-21.733	-22.642	-13.21	-13.00
				2572~2573	-15.857	-20.896	-22.002	-23.111	-13.44	-13.00
				2573~2574	-16.500	-21.812	-22.816	-23.874	-14.17	-13.00
				2574~2575	-17.156	-22.683	-23.424	-24.439	-14.84	-13.00
				2575~2576	-18.491	-23.673	-23.366	-25.126	-15.83	-13.00

Worst Plot of QPSK, Low Channel

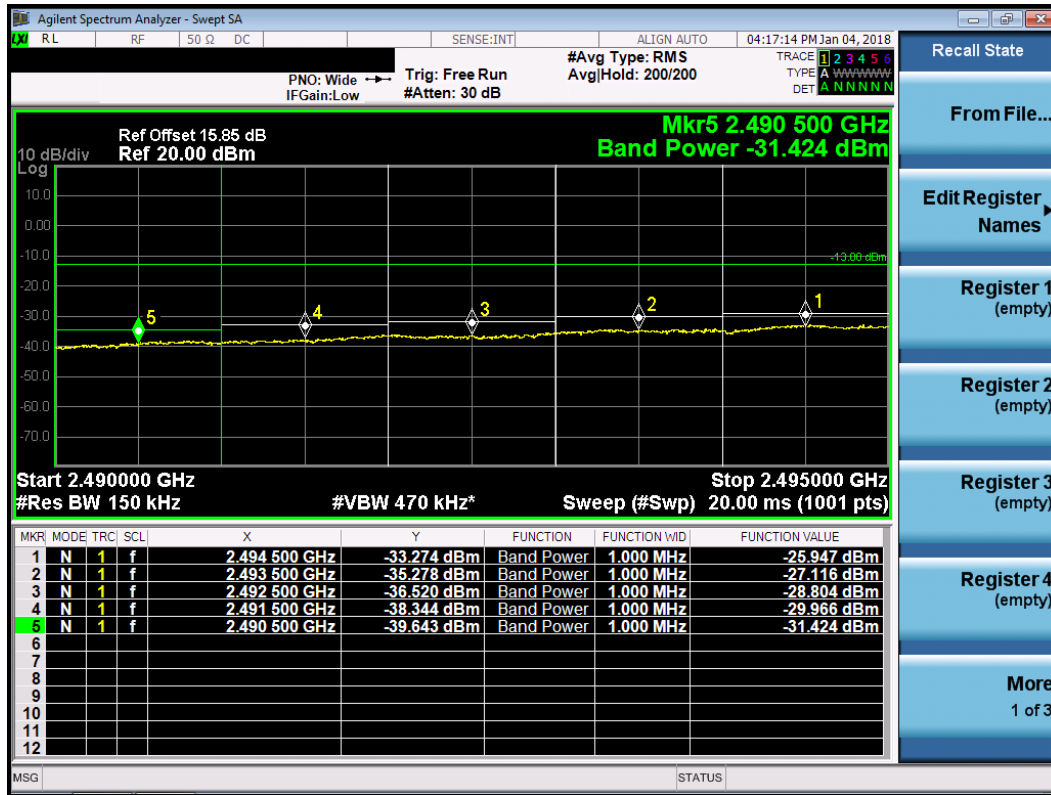


Worst Plot of QPSK, High Channel

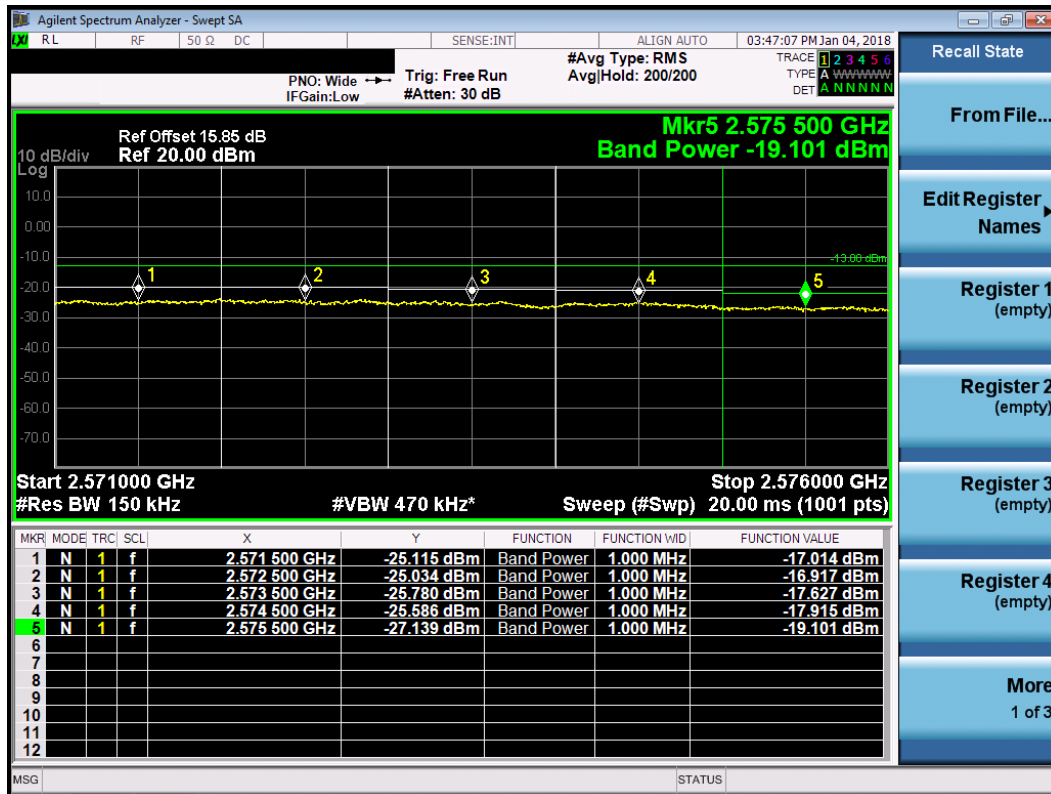


Measured Channel Edge Result										
Modulation	Freq. (MHz)	RB Size	RB offset	Range (MHz)	ANT 0 (dBm)	ANT 1 (dBm)	ANT 2 (dBm)	ANT 3 (dBm)	Total (dBm)	Limit (dBm)
16QAM	2503.5	1	0	2495~2494	-33.129	-35.335	-33.919	-34.350	-28.09	-13.00
				2494~2493	-37.708	-39.261	-38.397	-38.555	-32.42	-13.00
				2493~2492	-40.725	-41.831	-41.323	-41.304	-35.26	-13.00
				2492~2491	-42.835	-43.701	-43.210	-43.366	-37.25	-13.00
				2491~2490	-40.557	-39.997	-40.859	-40.896	-34.54	-13.00
	2503.5	75	0	2495~2494	-28.799	-29.554	-27.397	-25.947	-21.68	-13.00
				2494~2493	-29.828	-30.773	-28.613	-27.116	-22.84	-13.00
				2493~2492	-31.254	-32.204	-30.077	-28.804	-24.38	-13.00
				2492~2491	-32.619	-33.375	-31.025	-29.966	-25.52	-13.00
				2491~2490	-34.565	-34.858	-32.447	-31.424	-27.06	-13.00
	2562.5	1	74	2571~2572	-30.338	-32.857	-31.741	-33.177	-25.86	-13.00
				2572~2573	-34.714	-37.043	-36.314	-37.414	-30.22	-13.00
				2573~2574	-38.057	-40.394	-39.845	-40.576	-33.58	-13.00
				2574~2575	-40.742	-42.891	-42.486	-42.985	-36.15	-13.00
				2575~2576	-36.900	-39.153	-40.448	-38.220	-32.47	-13.00
	2562.5	75	0	2571~2572	-17.014	-22.606	-24.064	-25.361	-14.92	-13.00
				2572~2573	-16.917	-22.927	-24.102	-25.580	-14.94	-13.00
				2573~2574	-17.627	-24.115	-24.913	-26.493	-15.75	-13.00
				2574~2575	-17.915	-24.635	-25.637	-26.977	-16.14	-13.00
				2575~2576	-19.101	-25.551	-26.901	-27.829	-17.26	-13.00

Worst Plot of 16QAM, Low Channel

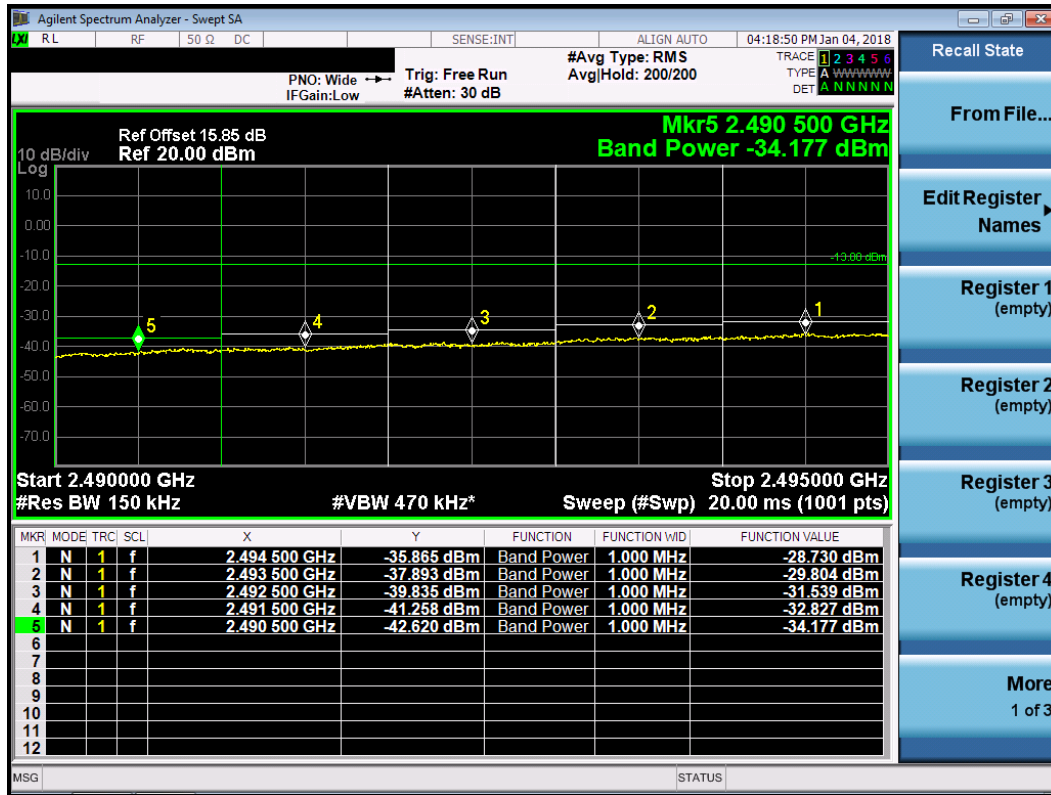


Worst Plot of 16QAM, High Channel

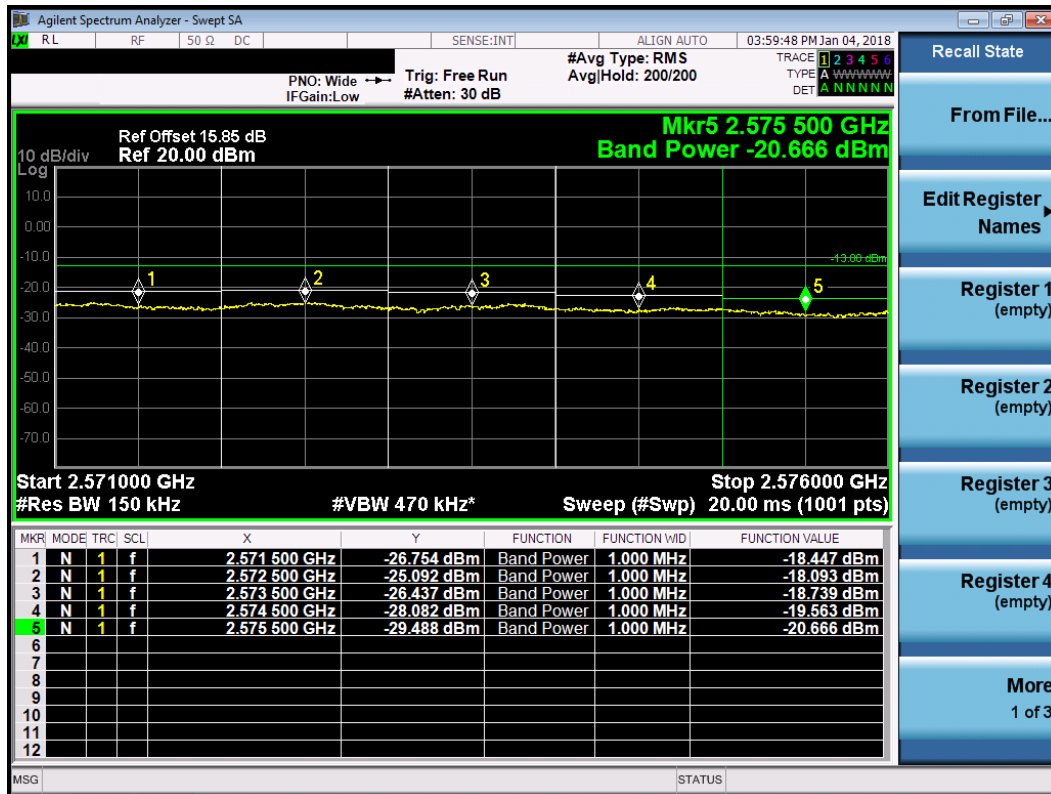


Measured Channel Edge Result										
Modulation	Freq. (MHz)	RB Size	RB offset	Range (MHz)	ANT 0 (dBm)	ANT 1 (dBm)	ANT 2 (dBm)	ANT 3 (dBm)	Total (dBm)	Limit (dBm)
64QAM	2503.5	1	0	2495~2494	-37.574	-39.075	-38.696	-38.595	-32.43	-13.00
				2494~2493	-40.765	-41.719	-41.629	-41.345	-35.33	-13.00
				2493~2492	-42.497	-43.267	-43.106	-43.044	-36.95	-13.00
				2492~2491	-43.996	-44.444	-44.348	-44.292	-38.25	-13.00
				2491~2490	-42.686	-40.223	-43.079	-41.156	-35.61	-13.00
	2503.5	75	0	2495~2494	-31.575	-31.944	-30.106	-28.730	-24.38	-13.00
				2494~2493	-32.550	-33.215	-31.006	-29.804	-25.42	-13.00
				2493~2492	-34.158	-34.701	-32.669	-31.539	-27.07	-13.00
				2492~2491	-35.519	-35.855	-33.787	-32.827	-28.30	-13.00
				2491~2490	-37.134	-37.283	-35.080	-34.177	-29.69	-13.00
	2562.5	1	74	2571~2572	-35.284	-37.945	-37.048	-38.439	-30.98	-13.00
				2572~2573	-38.313	-40.602	-40.102	-41.032	-33.86	-13.00
				2573~2574	-40.508	-42.644	-42.311	-42.927	-35.97	-13.00
				2574~2575	-42.393	-44.256	-43.839	-44.300	-37.60	-13.00
				2575~2576	-37.057	-40.313	-40.687	-39.795	-33.19	-13.00
	2562.5	75	0	2571~2572	-18.447	-25.868	-26.922	-28.605	-16.93	-13.00
				2572~2573	-18.093	-25.801	-26.946	-28.903	-16.69	-13.00
				2573~2574	-18.739	-26.571	-27.695	-29.722	-17.37	-13.00
				2574~2575	-19.563	-27.234	-28.457	-30.404	-18.16	-13.00
				2575~2576	-20.666	-28.487	-29.567	-30.993	-19.25	-13.00

Worst Plot of 64QAM, Low Channel



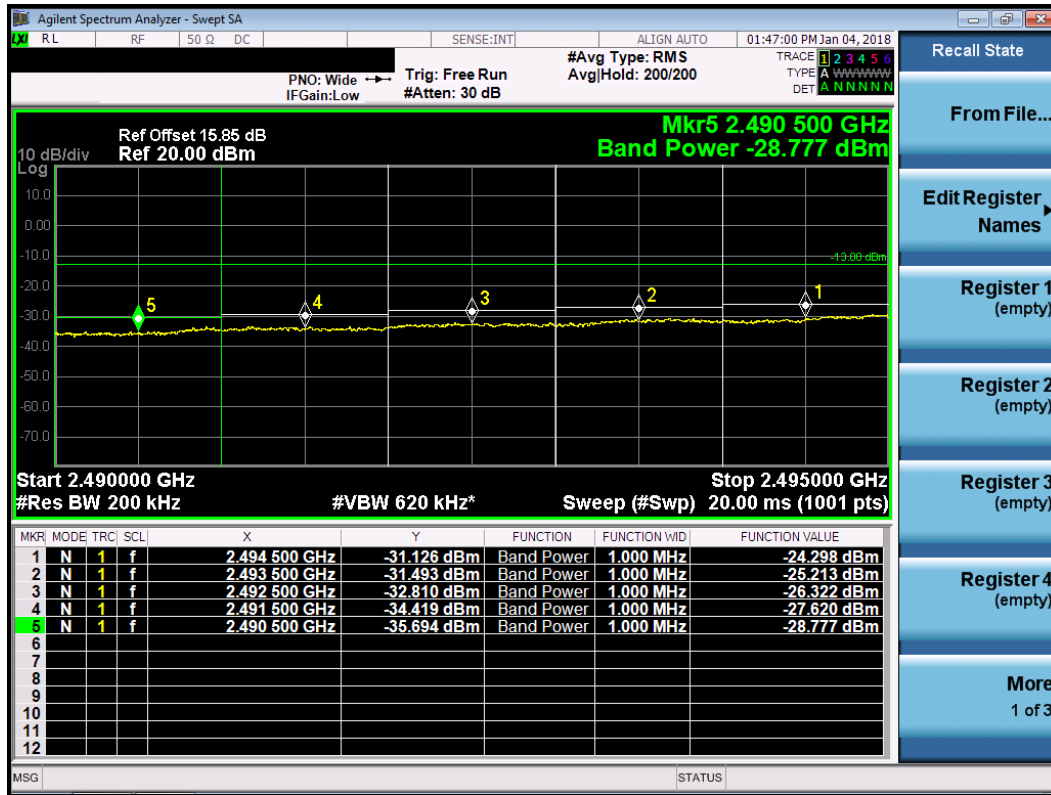
Worst Plot of 64QAM, High Channel



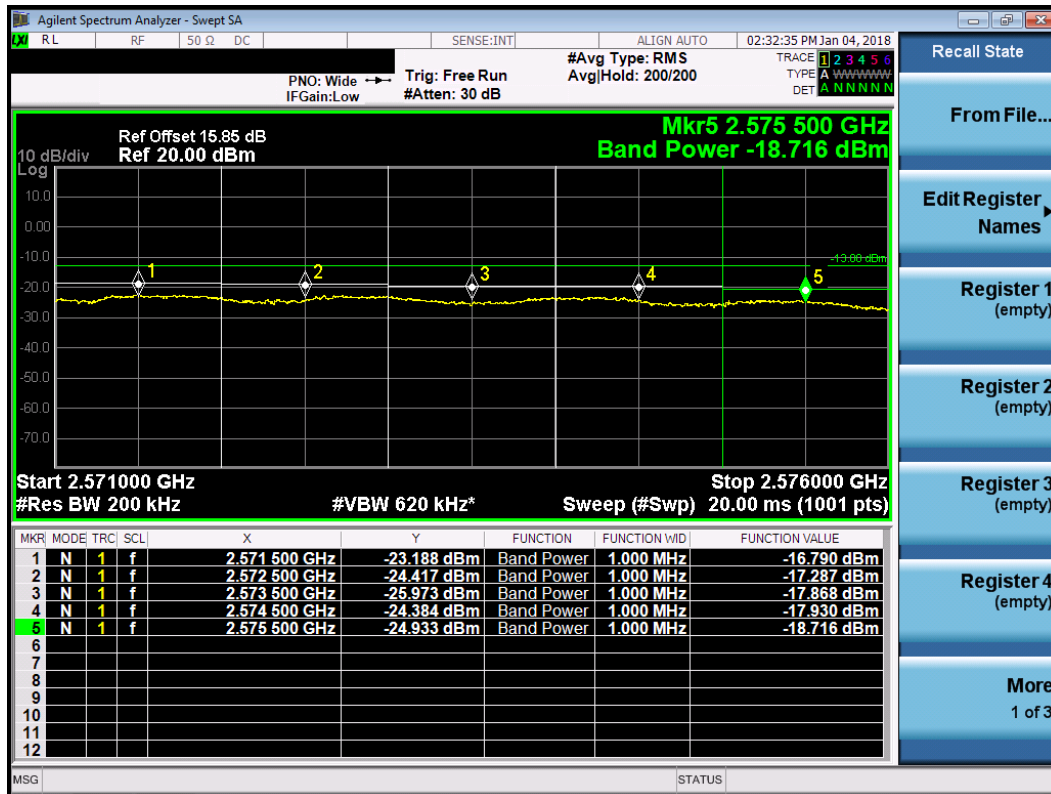
LTE Band 41, CB: 20MHz

Measured Channel Edge Result										
Modulation	Freq. (MHz)	RB Size	RB offset	Range (MHz)	ANT 0 (dBm)	ANT 1 (dBm)	ANT 2 (dBm)	ANT 3 (dBm)	Total (dBm)	Limit (dBm)
QPSK	2506.0	1	0	2495~2494	-35.091	-37.489	-35.377	-36.393	-29.97	-13.00
				2494~2493	-37.776	-39.692	-38.198	-38.833	-32.55	-13.00
				2493~2492	-40.712	-42.330	-41.039	-41.503	-35.33	-13.00
				2492~2491	-42.539	-43.814	-42.834	-43.133	-37.03	-13.00
				2491~2490	-43.929	-44.768	-44.009	-44.211	-38.20	-13.00
	2506.0	100	0	2495~2494	-26.500	-29.363	-24.298	-25.450	-20.02	-13.00
				2494~2493	-27.527	-29.988	-25.213	-26.342	-20.91	-13.00
				2493~2492	-28.831	-30.805	-26.322	-27.265	-21.97	-13.00
				2492~2491	-30.247	-31.834	-27.620	-28.354	-23.20	-13.00
				2491~2490	-31.676	-33.277	-28.777	-29.515	-24.44	-13.00
	2560.0	1	99	2571~2572	-31.239	-34.507	-32.672	-34.918	-27.06	-13.00
				2572~2573	-33.971	-37.304	-35.894	-37.748	-29.95	-13.00
				2573~2574	-37.150	-40.511	-39.306	-40.872	-33.18	-13.00
				2574~2575	-39.497	-42.596	-41.739	-42.768	-35.42	-13.00
				2575~2576	-41.389	-44.182	-43.354	-44.171	-37.09	-13.00
	2560.0	100	0	2571~2572	-16.790	-19.507	-20.684	-21.638	-13.23	-13.00
				2572~2573	-17.287	-20.271	-21.455	-22.193	-13.84	-13.00
				2573~2574	-17.868	-21.040	-22.355	-22.696	-14.51	-13.00
				2574~2575	-17.930	-21.227	-22.743	-22.937	-14.68	-13.00
				2575~2576	-18.716	-22.286	-23.464	-23.578	-15.49	-13.00

Worst Plot of QPSK, Low Channel

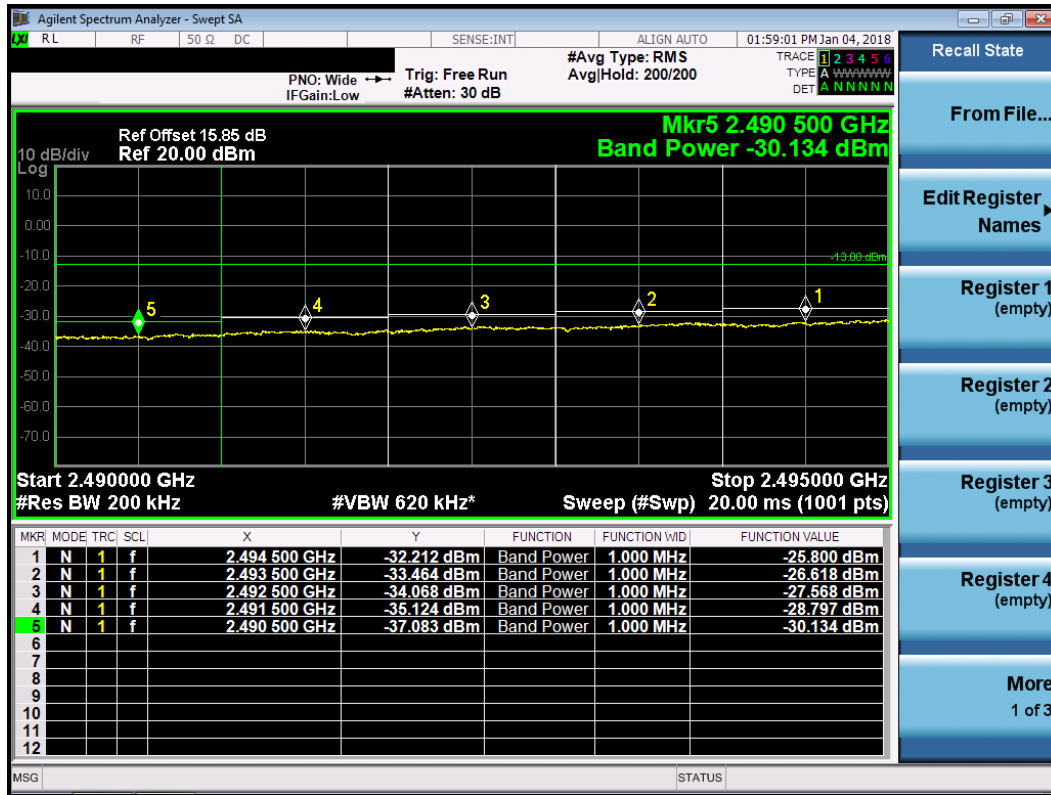


Worst Plot of QPSK, High Channel

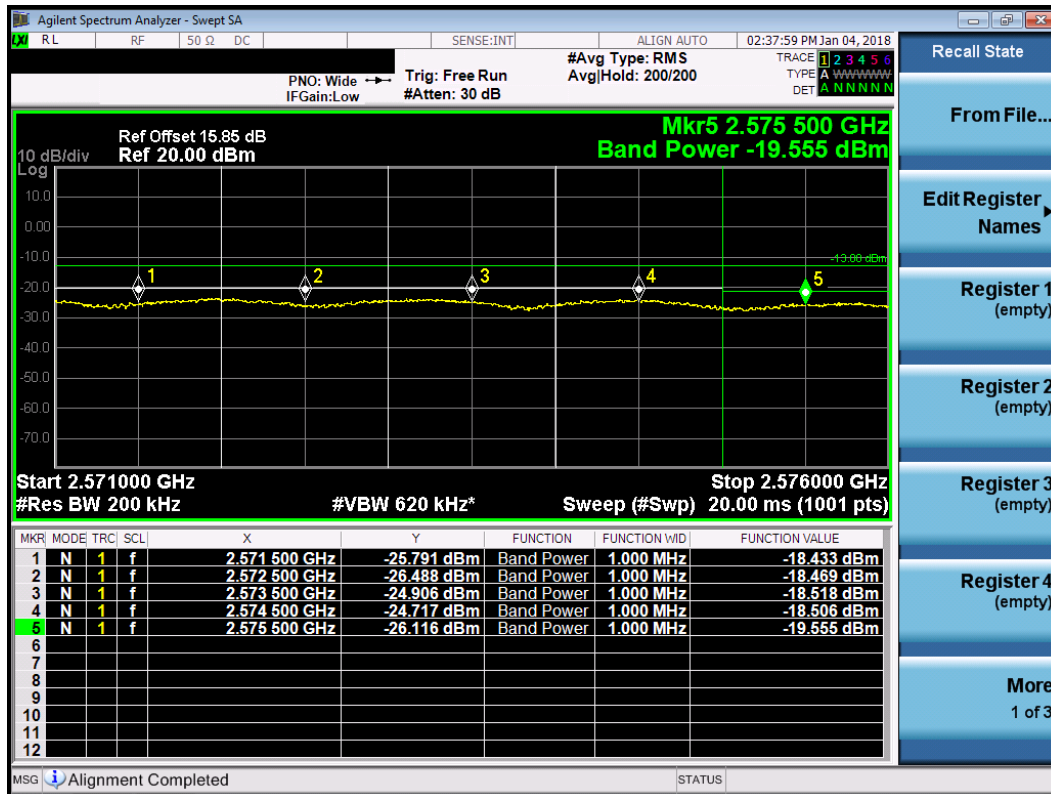


Measured Channel Edge Result										
Modulation	Freq. (MHz)	RB Size	RB offset	Range (MHz)	ANT 0 (dBm)	ANT 1 (dBm)	ANT 2 (dBm)	ANT 3 (dBm)	Total (dBm)	Limit (dBm)
16QAM	2506.0	1	0	2495~2494	-35.357	-37.742	-35.986	-36.916	-30.39	-13.00
				2494~2493	-38.015	-40.052	-38.707	-39.462	-32.97	-13.00
				2493~2492	-40.938	-42.581	-41.537	-42.196	-35.75	-13.00
				2492~2491	-42.737	-44.007	-43.207	-43.676	-37.36	-13.00
				2491~2490	-44.098	-44.875	-44.293	-44.750	-38.47	-13.00
	2506.0	100	0	2495~2494	-28.241	-30.828	-25.800	-27.250	-21.65	-13.00
				2494~2493	-29.216	-31.630	-26.618	-28.125	-22.52	-13.00
				2493~2492	-30.315	-32.385	-27.568	-28.843	-23.41	-13.00
				2492~2491	-31.752	-33.691	-28.797	-29.974	-24.66	-13.00
				2491~2490	-33.160	-34.715	-30.134	-31.465	-26.01	-13.00
	2560.0	1	99	2571~2572	-31.735	-34.888	-32.977	-35.241	-27.45	-13.00
				2572~2573	-34.573	-37.677	-36.220	-38.138	-30.40	-13.00
				2573~2574	-37.834	-40.808	-39.691	-41.137	-33.64	-13.00
				2574~2575	-40.163	-42.920	-42.044	-43.052	-35.86	-13.00
				2575~2576	-42.000	-44.325	-43.617	-44.385	-37.45	-13.00
	2560.0	100	0	2571~2572	-18.433	-21.539	-23.504	-24.282	-15.29	-13.00
				2572~2573	-18.469	-21.966	-24.018	-24.853	-15.56	-13.00
				2573~2574	-18.518	-22.545	-24.526	-25.386	-15.84	-13.00
				2574~2575	-18.506	-22.771	-24.842	-25.305	-15.91	-13.00
				2575~2576	-19.555	-23.866	-25.825	-25.925	-16.91	-13.00

Worst Plot of 16QAM, Low Channel

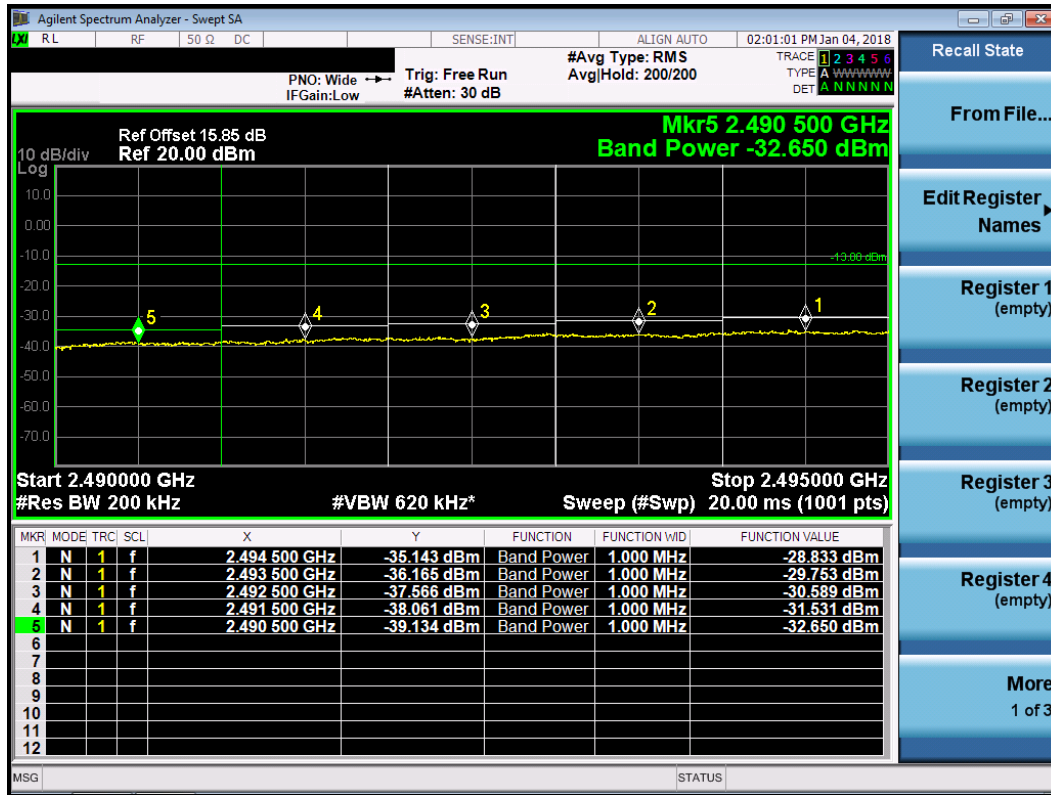


Worst Plot of 16QAM, High Channel

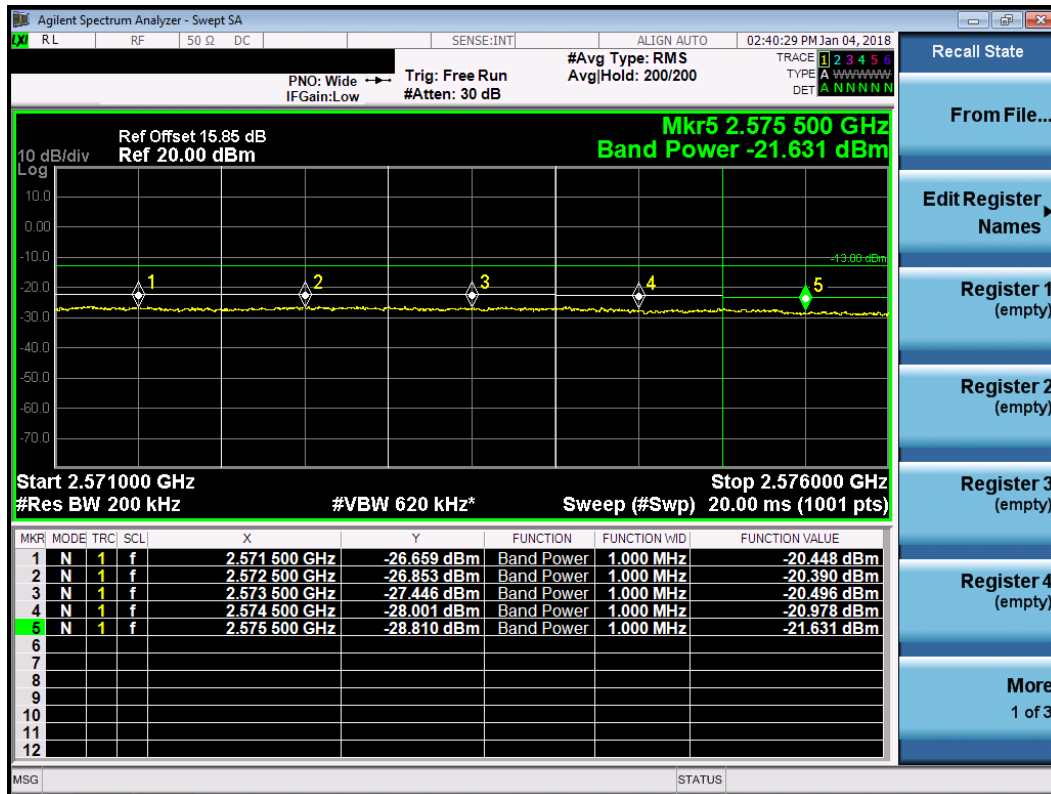


Measured Channel Edge Result										
Modulation	Freq. (MHz)	RB Size	RB offset	Range (MHz)	ANT 0 (dBm)	ANT 1 (dBm)	ANT 2 (dBm)	ANT 3 (dBm)	Total (dBm)	Limit (dBm)
64QAM	2506.0	1	0	2495~2494	-38.756	-40.798	-39.705	-40.250	-33.79	-13.00
				2494~2493	-40.362	-41.933	-41.177	-41.442	-35.17	-13.00
				2493~2492	-42.730	-43.949	-43.326	-43.628	-37.36	-13.00
				2492~2491	-43.988	-44.809	-44.370	-44.567	-38.40	-13.00
				2491~2490	-44.852	-45.377	-45.018	-45.172	-39.08	-13.00
	2506.0	100	0	2495~2494	-30.664	-32.631	-28.833	-30.866	-24.52	-13.00
				2494~2493	-31.520	-33.782	-29.753	-31.287	-25.34	-13.00
				2493~2492	-32.395	-34.839	-30.589	-32.044	-26.19	-13.00
				2492~2491	-33.727	-36.049	-31.531	-33.263	-27.34	-13.00
				2491~2490	-35.450	-37.011	-32.650	-34.711	-28.65	-13.00
	2560.0	1	99	2571~2572	-36.207	-39.411	-37.883	-39.709	-32.05	-13.00
				2572~2573	-37.705	-40.601	-39.672	-40.979	-33.52	-13.00
				2573~2574	-40.534	-43.133	-42.386	-43.258	-36.16	-13.00
				2574~2575	-42.083	-44.373	-43.782	-44.285	-37.51	-13.00
				2575~2576	-43.291	-45.127	-44.667	-44.975	-38.43	-13.00
	2560.0	100	0	2571~2572	-20.448	-25.264	-27.432	-28.679	-18.19	-13.00
				2572~2573	-20.390	-25.412	-27.715	-28.878	-18.24	-13.00
				2573~2574	-20.496	-25.467	-28.093	-28.589	-18.33	-13.00
				2574~2575	-20.978	-26.096	-28.961	-29.192	-18.89	-13.00
				2575~2576	-21.631	-27.133	-29.507	-29.686	-19.59	-13.00

Worst Plot of 64QAM, Low Channel

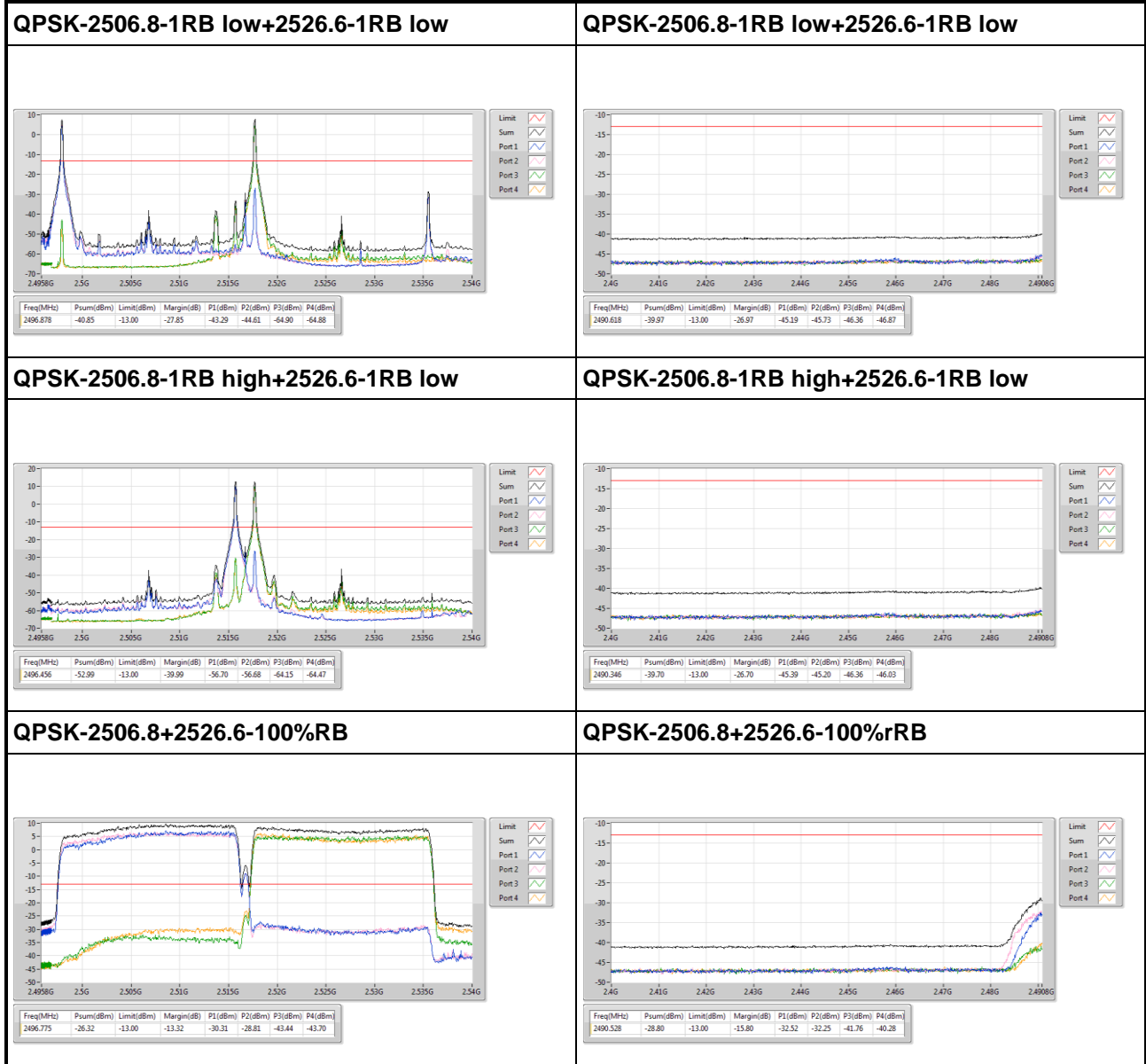


Worst Plot of 64QAM, High Channel

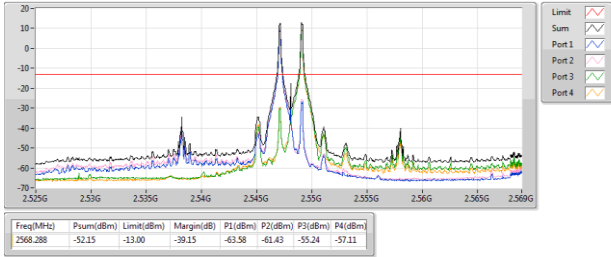


3.4.6 Test Result of Channel Edge_CA mode

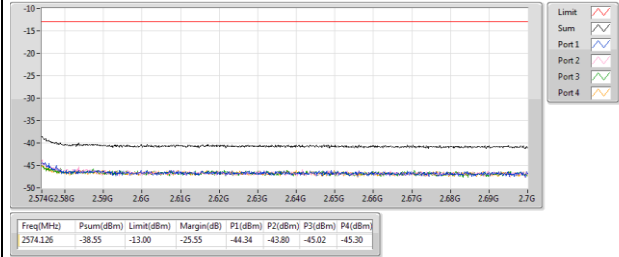
LTE Band 41, CB: 20MHz+20MHz



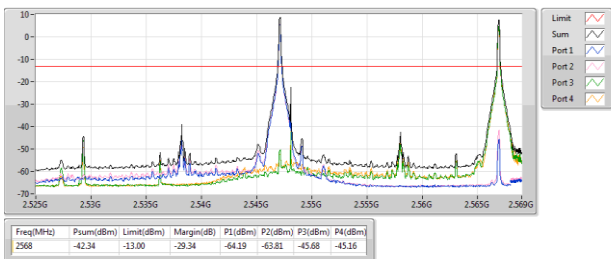
QPSK-2538.2-1RB high+2558-1RB low



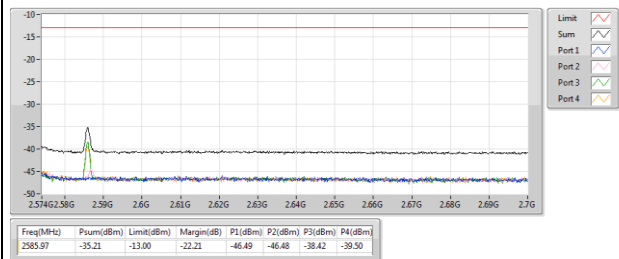
QPSK-2538.2-1RB high+2558-1RB low



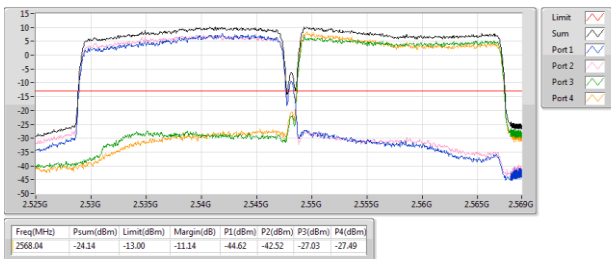
QPSK-2538.2-1RB high+2558-1RB high



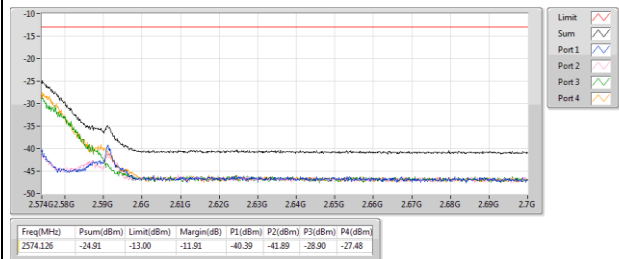
QPSK-2538.2-1RB high+2558-1RB high

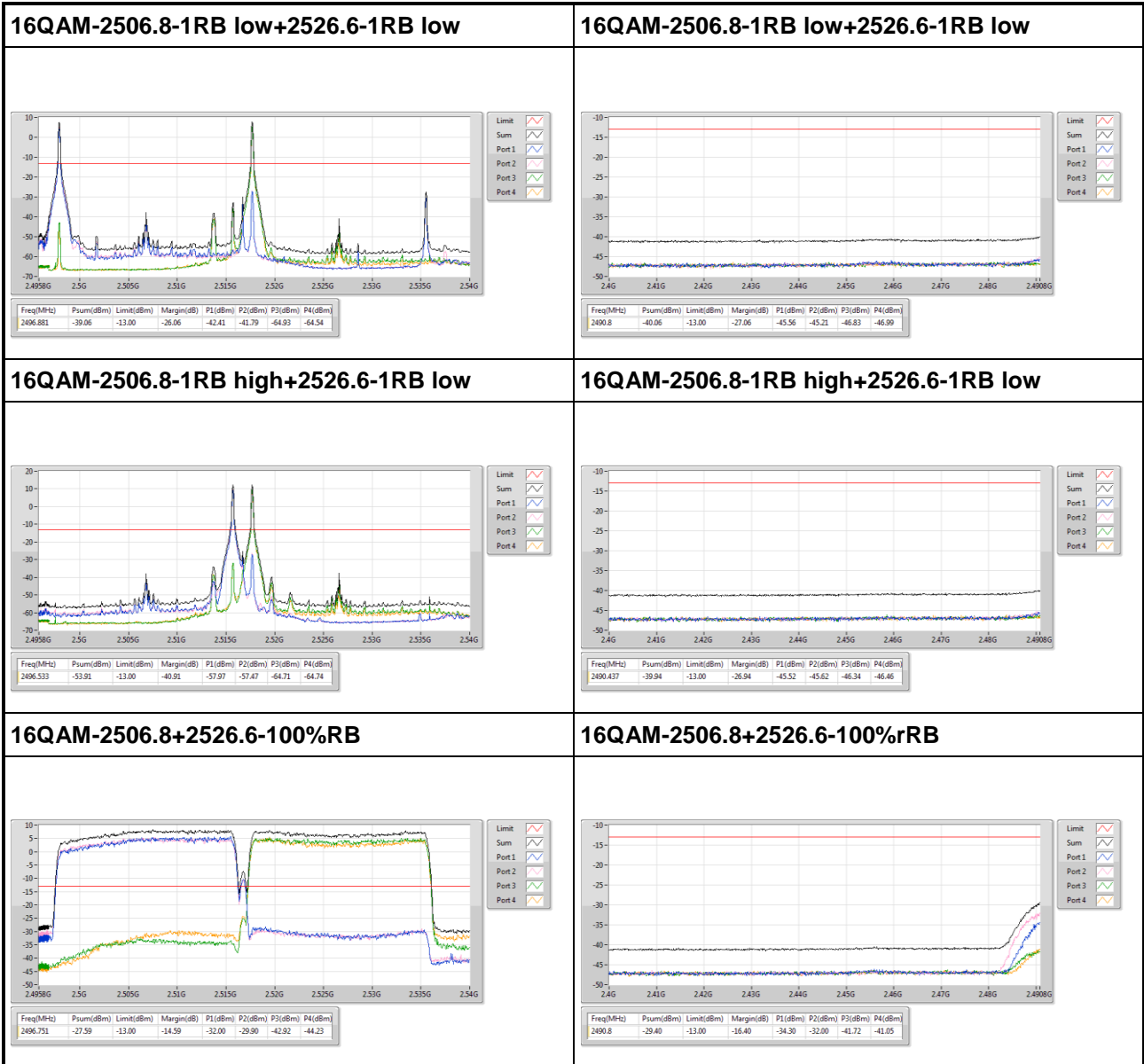


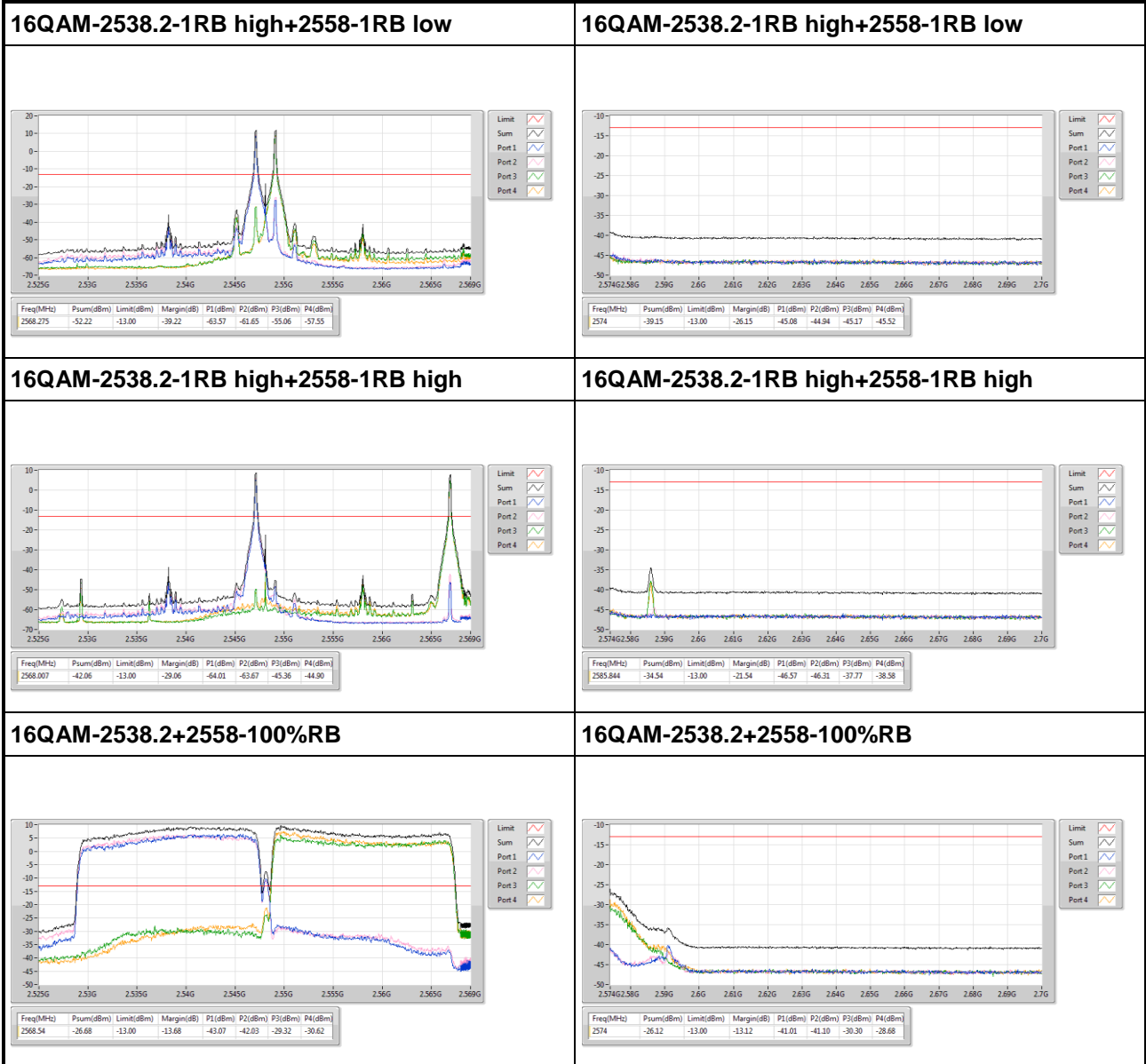
QPSK-2538.2+2558-100%RB



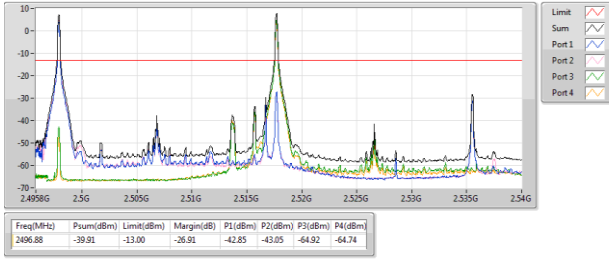
QPSK-2538.2+2558-100%RB



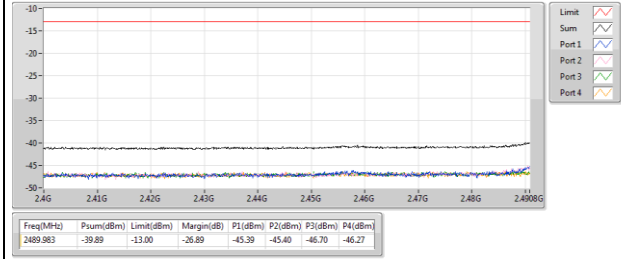




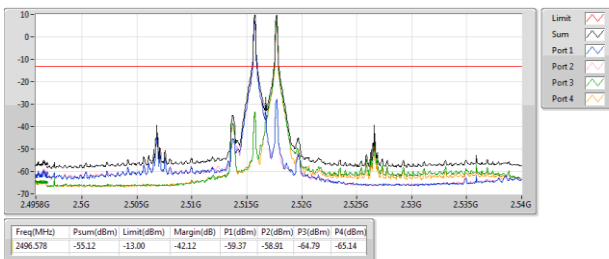
64QAM-2506.8-1RB low+2526.6-1RB low



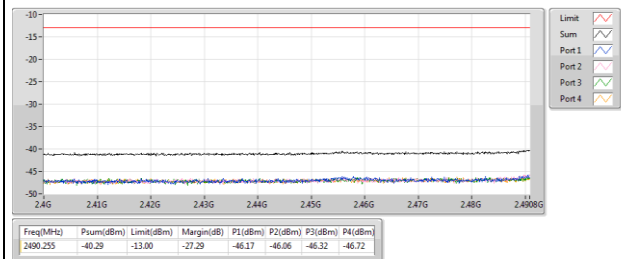
64QAM-2506.8-1RB low+2526.6-1RB low



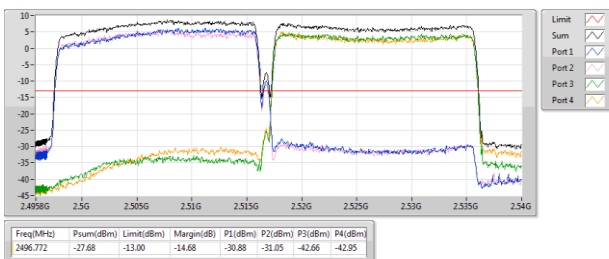
64QAM-2506.8-1RB high+2526.6-1RB low



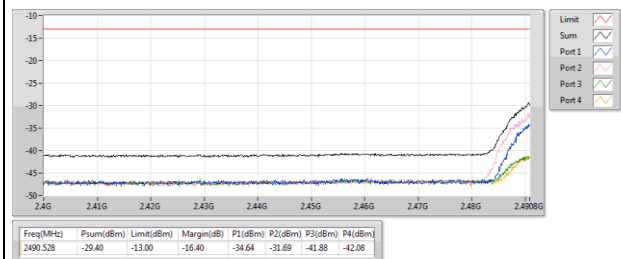
64QAM-2506.8-1RB high+2526.6-1RB low



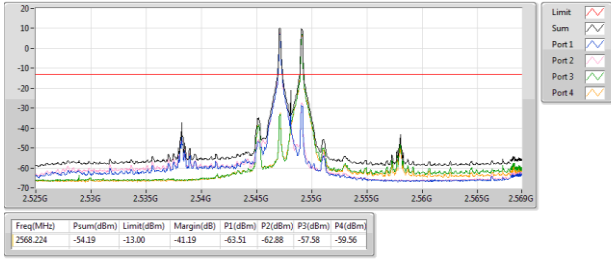
64QAM-2506.8+2526.6-100%RB



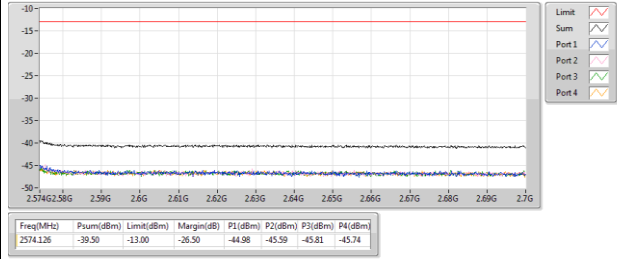
64QAM-2506.8+2526.6-100%rRB



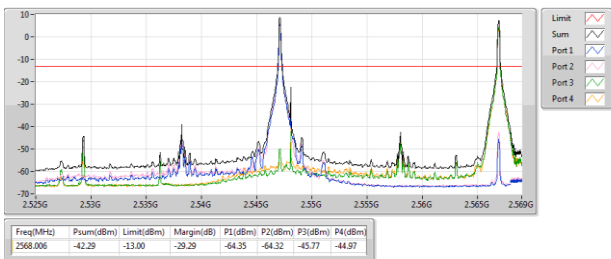
64QAM-2538.2-1RB high+2558-1RB low



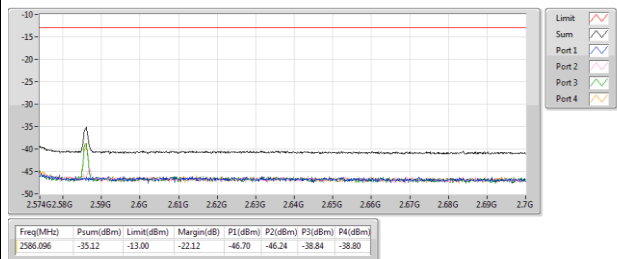
64QAM-2538.2-1RB high+2558-1RB low



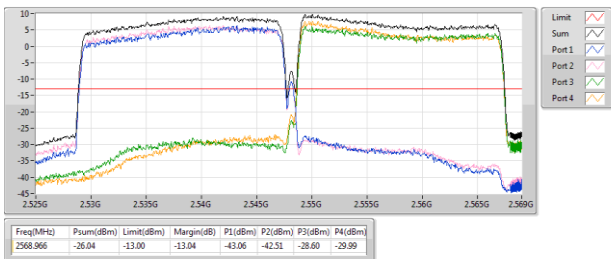
64QAM-2538.2-1RB high+2558-1RB high



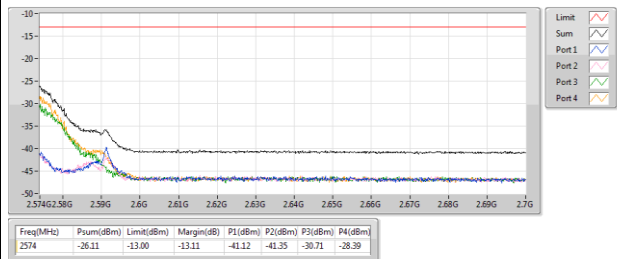
64QAM-2538.2-1RB high+2558-1RB high



64QAM-2538.2+2558-100%RB



64QAM-2538.2+2558-100%RB

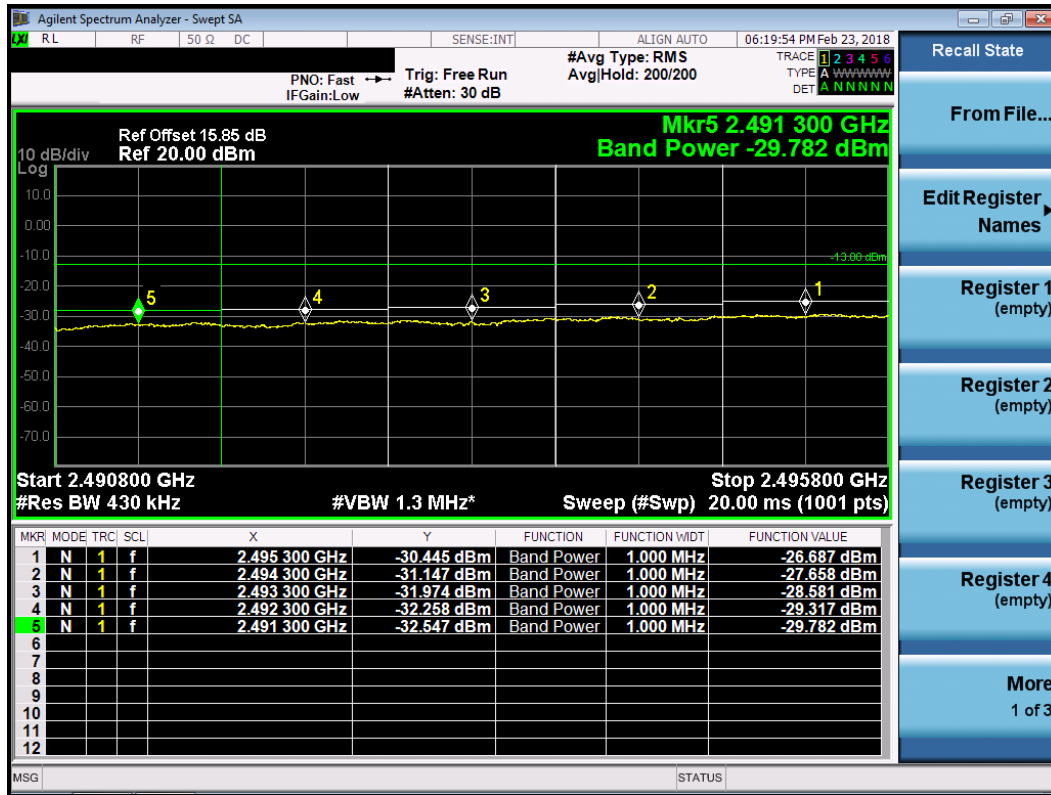


3.4.7 Measured Channel Edge Result_CA mode

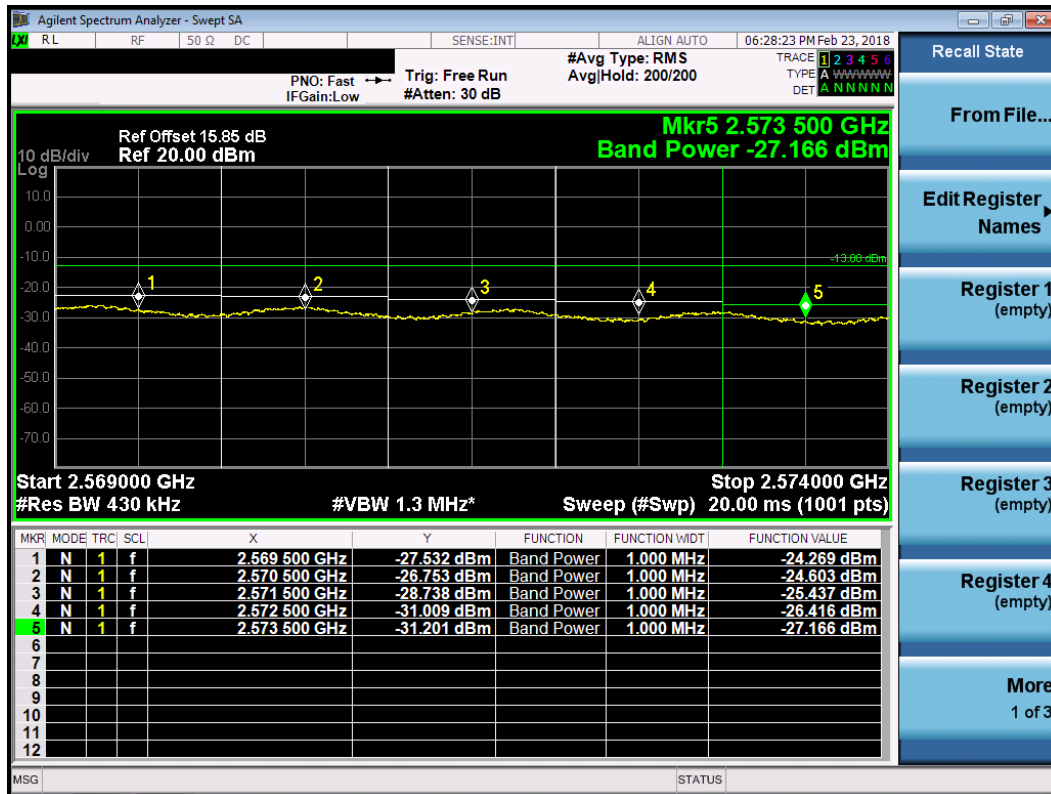
LTE Band 41, CB: 20MHz+20MHz, QPSK

Measured Channel Edge Result												
PCC Freq. (MHz)	SCC Freq. (MHz)	PCC RB		SCC RB		Range (MHz)	ANT0 (dBm)	ANT1 (dBm)	ANT2 (dBm)	ANT3 (dBm)	Total (dBm)	Limit (dBm)
		size	offset	size	offset							
2506.8	2526.6	1	0	1	0	2495.8~2494.8	-39.094	-38.623	-45.393	-45.542	-34.99	-13
						2494.8~2493.8	-39.348	-38.923	-45.433	-45.553	-35.22	-13
						2493.8~2492.8	-42.513	-42.484	-45.434	-45.528	-37.72	-13
						2492.8~2491.8	-43.565	-43.486	-45.471	-45.599	-38.39	-13
						2491.8~2490.8	-44.338	-44.245	-45.529	-45.641	-38.87	-13
2506.8	2526.6	1	99	1	0	2495.8~2494.8	-40.578	-40.098	-44.859	-45.181	-36.05	-13
						2494.8~2493.8	-41.410	-41.081	-44.948	-45.150	-36.72	-13
						2493.8~2492.8	-42.607	-42.312	-44.969	-45.196	-37.55	-13
						2492.8~2491.8	-43.298	-43.121	-45.113	-45.257	-38.06	-13
						2491.8~2490.8	-44.080	-43.937	-45.214	-45.357	-38.58	-13
2506.8	2526.6	100	0	100	0	2495.8~2494.8	-27.167	-26.687	-39.198	-39.266	-23.66	-13
						2494.8~2493.8	-28.033	-27.658	-39.537	-39.280	-24.54	-13
						2493.8~2492.8	-28.855	-28.581	-39.655	-39.186	-25.35	-13
						2492.8~2491.8	-29.947	-29.317	-39.604	-39.210	-26.18	-13
						2491.8~2490.8	-30.832	-29.782	-39.853	-39.613	-26.80	-13
2538.2	2558.0	1	99	1	99	2569~2570	-44.288	-43.726	-38.841	-38.873	-34.69	-13
						2570~2571	-44.055	-43.586	-38.128	-37.356	-33.76	-13
						2571~2572	-44.112	-43.801	-42.245	-41.371	-36.72	-13
						2572~2573	-44.300	-44.159	-43.462	-42.621	-37.56	-13
						2573~2574	-44.464	-44.471	-44.401	-43.689	-38.22	-13
2538.2	2558.0	1	99	1	0	2569~2570	-42.404	-41.504	-38.785	-40.135	-34.47	-13
						2570~2571	-42.133	-41.338	-39.417	-40.528	-34.72	-13
						2571~2572	-42.281	-41.832	-40.780	-41.489	-35.54	-13
						2572~2573	-42.754	-42.500	-42.125	-42.217	-36.37	-13
						2573~2574	-43.228	-43.103	-43.457	-43.518	-37.30	-13
2538.2	2558.0	100	0	100	0	2569~2570	-38.789	-37.626	-24.269	-24.918	-21.39	-13
						2570~2571	-38.383	-37.581	-24.603	-25.467	-21.79	-13
						2571~2572	-38.077	-37.864	-25.437	-25.659	-22.29	-13
						2572~2573	-38.137	-38.231	-26.416	-25.598	-22.72	-13
						2573~2574	-39.293	-39.571	-27.166	-25.769	-23.19	-13

Worst Plot of QPSK, Low Channel



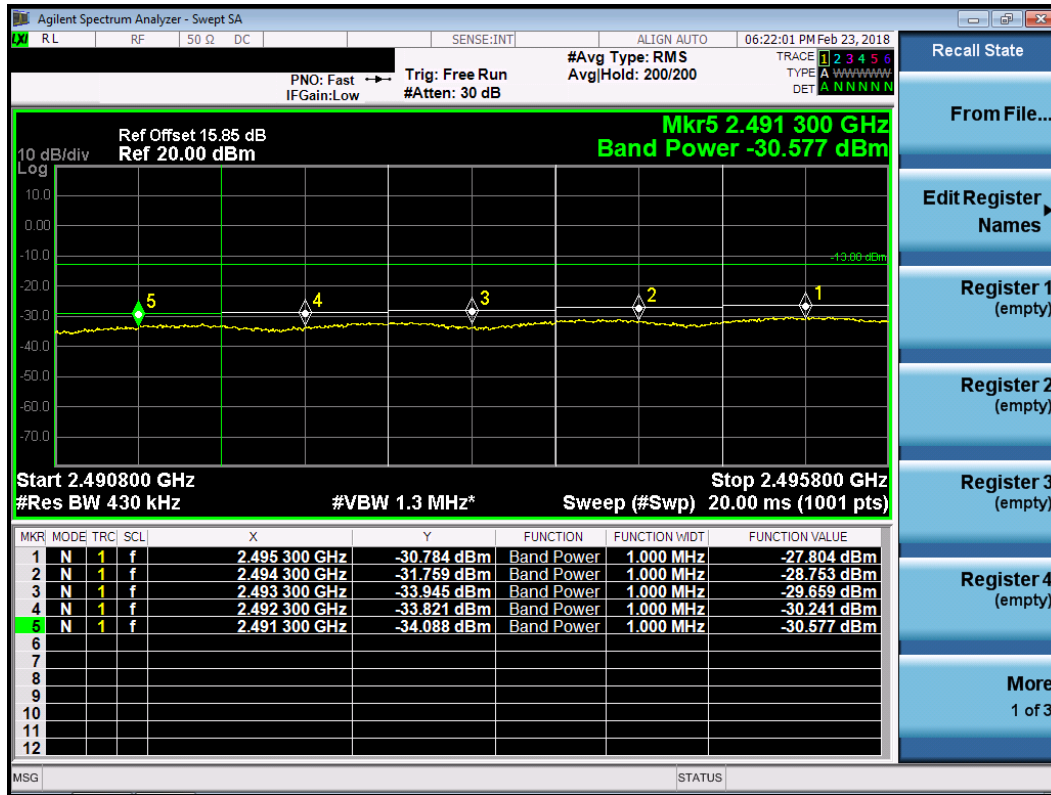
Worst Plot of QPSK, High Channel



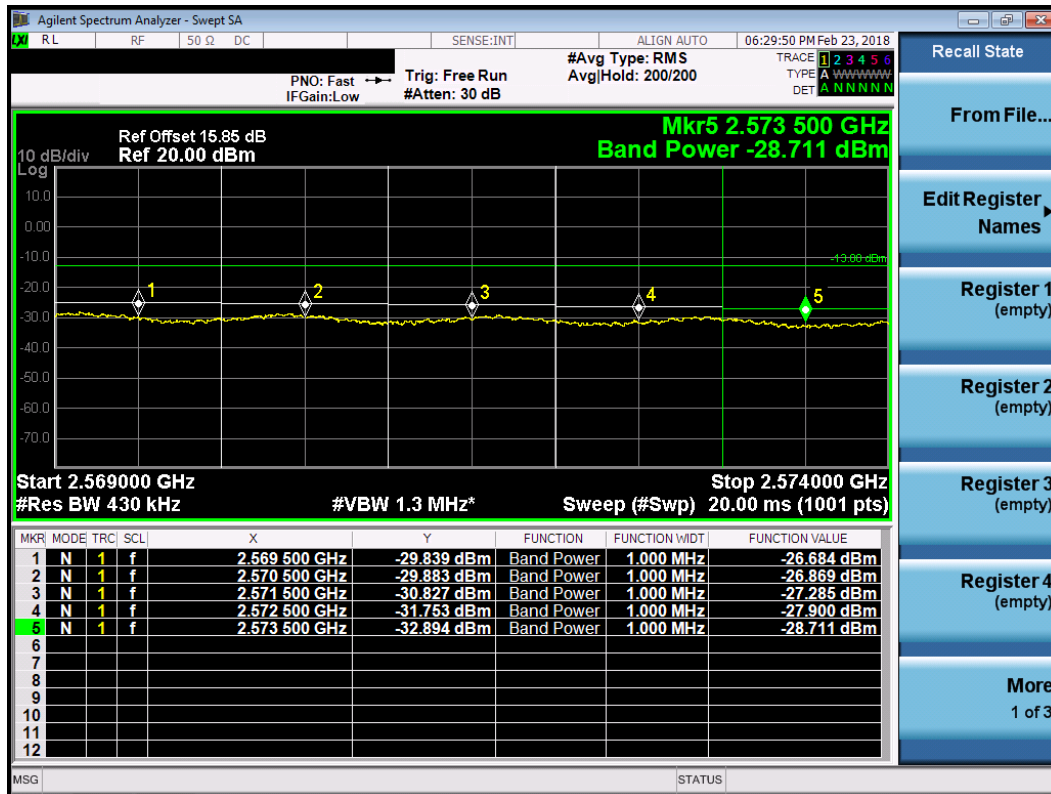
LTE Band 41, CB: 20MHz+20MHz, 16QAM

Measured Channel Edge Result												
PCC Freq. (MHz)	SCC Freq. (MHz)	PCC RB		SCC RB		Range (MHz)	ANT0 (dBm)	ANT1 (dBm)	ANT2 (dBm)	ANT3 (dBm)	Total (dBm)	Limit (dBm)
		size	offset	size	offset							
2506.8	2526.6	1	0	1	0	2495.8~2494.8	-39.074	-38.724	-45.338	-45.578	-35.02	-13
						2494.8~2493.8	-39.221	-39.044	-45.352	-45.558	-35.21	-13
						2493.8~2492.8	-42.424	-42.315	-45.410	-45.525	-37.63	-13
						2492.8~2491.8	-43.532	-43.480	-45.476	-45.557	-38.38	-13
						2491.8~2490.8	-44.319	-44.250	-45.482	-45.565	-38.84	-13
2506.8	2526.6	1	99	1	0	2495.8~2494.8	-41.088	-40.757	-44.965	-45.270	-36.51	-13
						2494.8~2493.8	-41.864	-41.666	-45.010	-45.251	-37.11	-13
						2493.8~2492.8	-42.807	-42.703	-45.049	-45.267	-37.77	-13
						2492.8~2491.8	-43.486	-43.321	-45.150	-45.322	-38.20	-13
						2491.8~2490.8	-44.259	-44.184	-45.238	-45.348	-38.70	-13
2506.8	2526.6	100	0	100	0	2495.8~2494.8	-29.663	-27.804	-38.829	-39.324	-25.25	-13
						2494.8~2493.8	-30.574	-28.753	-39.361	-39.210	-26.12	-13
						2493.8~2492.8	-31.318	-29.659	-39.464	-39.056	-26.87	-13
						2492.8~2491.8	-31.936	-30.241	-39.778	-39.365	-27.43	-13
						2491.8~2490.8	-32.570	-30.577	-39.886	-39.694	-27.85	-13
2538.2	2558.0	1	99	1	99	2569~2570	-44.240	-43.724	-39.394	-39.316	-35.06	-13
						2570~2571	-44.023	-43.567	-38.344	-37.571	-33.93	-13
						2571~2572	-44.009	-43.756	-42.213	-41.472	-36.71	-13
						2572~2573	-44.236	-44.150	-43.534	-42.638	-37.57	-13
						2573~2574	-44.449	-44.445	-44.445	-43.751	-38.24	-13
2538.2	2558.0	1	99	1	0	2569~2570	-42.860	-41.902	-39.530	-40.902	-35.10	-13
						2570~2571	-42.575	-41.861	-40.113	-41.143	-35.31	-13
						2571~2572	-42.752	-42.151	-41.482	-42.046	-36.06	-13
						2572~2573	-43.033	-42.808	-42.544	-42.653	-36.74	-13
						2573~2574	-43.458	-43.309	-43.954	-43.876	-37.62	-13
2538.2	2558.0	100	0	100	0	2569~2570	-38.617	-37.668	-26.684	-27.264	-23.63	-13
						2570~2571	-38.372	-37.663	-26.869	-27.157	-23.67	-13
						2571~2572	-38.327	-37.752	-27.285	-27.086	-23.83	-13
						2572~2573	-38.536	-38.398	-27.900	-27.160	-24.17	-13
						2573~2574	-39.279	-39.741	-28.711	-27.199	-24.59	-13

Worst Plot of 16QAM, Low Channel



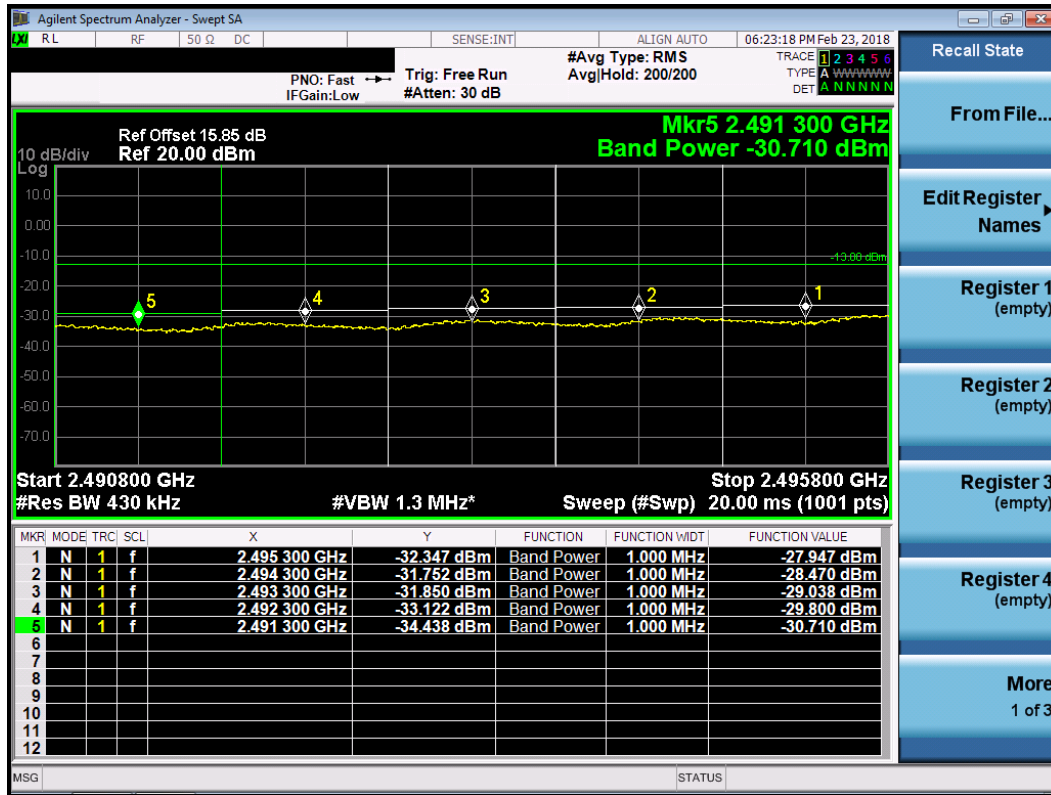
Worst Plot of 16QAM, High Channel



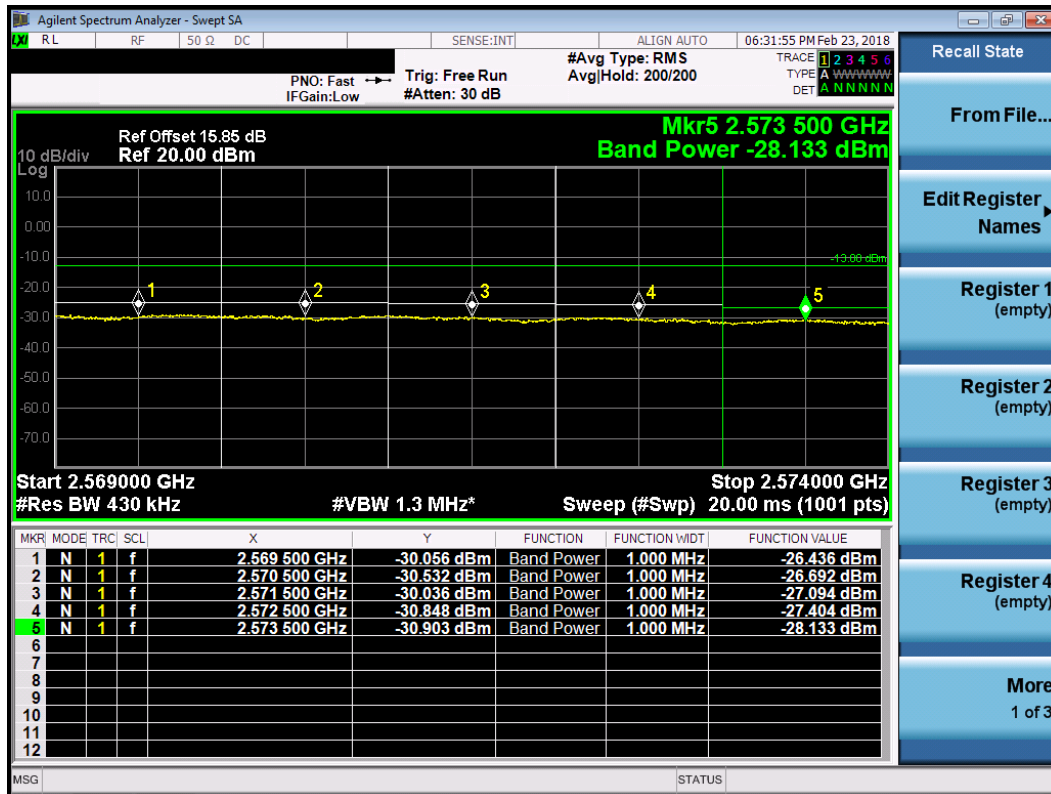
LTE Band 41, CB: 20MHz+20MHz, 64QAM

Measured Channel Edge Result												
PCC Freq. (MHz)	SCC Freq. (MHz)	PCC RB		SCC RB		Range (MHz)	ANT0 (dBm)	ANT1 (dBm)	ANT2 (dBm)	ANT3 (dBm)	Total (dBm)	Limit (dBm)
		size	offset	size	offset							
2506.8	2526.6	1	0	1	0	2495.8~2494.8	-39.108	-38.661	-45.403	-45.513	-35.01	-13
						2494.8~2493.8	-39.214	-38.976	-45.359	-45.490	-35.17	-13
						2493.8~2492.8	-42.435	-42.340	-45.380	-45.498	-37.63	-13
						2492.8~2491.8	-43.569	-43.504	-45.443	-45.565	-38.39	-13
						2491.8~2490.8	-44.265	-44.241	-45.530	-45.575	-38.83	-13
2506.8	2526.6	1	99	1	0	2495.8~2494.8	-42.261	-42.091	-45.249	-45.384	-37.45	-13
						2494.8~2493.8	-42.893	-42.663	-45.220	-45.428	-37.85	-13
						2493.8~2492.8	-43.682	-43.571	-45.293	-45.458	-38.39	-13
						2492.8~2491.8	-44.162	-44.063	-45.346	-45.502	-38.70	-13
						2491.8~2490.8	-44.741	-44.660	-45.412	-45.499	-39.04	-13
2506.8	2526.6	100	0	100	0	2495.8~2494.8	-29.815	-27.947	-38.702	-38.708	-25.35	-13
						2494.8~2493.8	-30.440	-28.470	-39.064	-39.117	-25.90	-13
						2493.8~2492.8	-30.831	-29.038	-39.302	-39.274	-26.36	-13
						2492.8~2491.8	-31.477	-29.800	-39.732	-39.419	-27.03	-13
						2491.8~2490.8	-32.410	-30.710	-40.046	-39.415	-27.86	-13
2538.2	2558.0	1	99	1	99	2569~2570	-44.230	-43.712	-39.660	-39.497	-35.22	-13
						2570~2571	-44.003	-43.613	-38.433	-37.730	-34.03	-13
						2571~2572	-44.137	-43.883	-42.117	-41.508	-36.75	-13
						2572~2573	-44.219	-44.110	-43.539	-42.771	-37.60	-13
						2573~2574	-44.413	-44.472	-44.376	-43.725	-38.22	-13
2538.2	2558.0	1	99	1	0	2569~2570	-43.794	-42.916	-40.853	-42.337	-36.32	-13
						2570~2571	-43.508	-42.806	-41.343	-42.504	-36.45	-13
						2571~2572	-43.586	-43.034	-42.499	-43.206	-37.04	-13
						2572~2573	-43.821	-43.499	-43.302	-43.689	-37.55	-13
						2573~2574	-44.092	-43.915	-44.401	-44.501	-38.20	-13
2538.2	2558.0	100	0	100	0	2569~2570	-38.677	-37.595	-26.436	-27.062	-23.42	-13
						2570~2571	-38.371	-37.540	-26.692	-27.052	-23.53	-13
						2571~2572	-38.215	-37.813	-27.094	-27.021	-23.71	-13
						2572~2573	-38.429	-38.403	-27.404	-26.912	-23.83	-13
						2573~2574	-39.150	-39.567	-28.133	-26.813	-24.14	-13

Worst Plot of 64QAM, Low Channel



Worst Plot of 64QAM, High Channel



3.5 Emission and Occupied Bandwidth

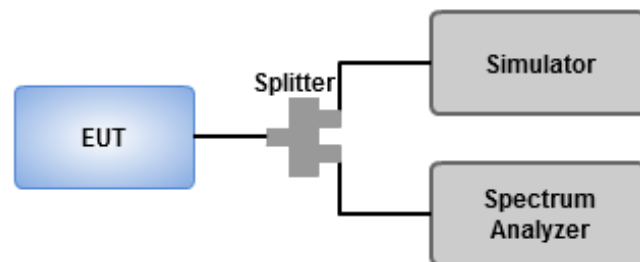
3.5.1 Test Procedures

1. Set as below setting for LTE mode

Bandwidth (MHz)	RBW (kHz)	VBW (KHz)	Detector	Sweep time
5	56	180	Peak	Auto
10	100	300	Peak	Auto
15	150	470	Peak	Auto
20	200	620	Peak	Auto

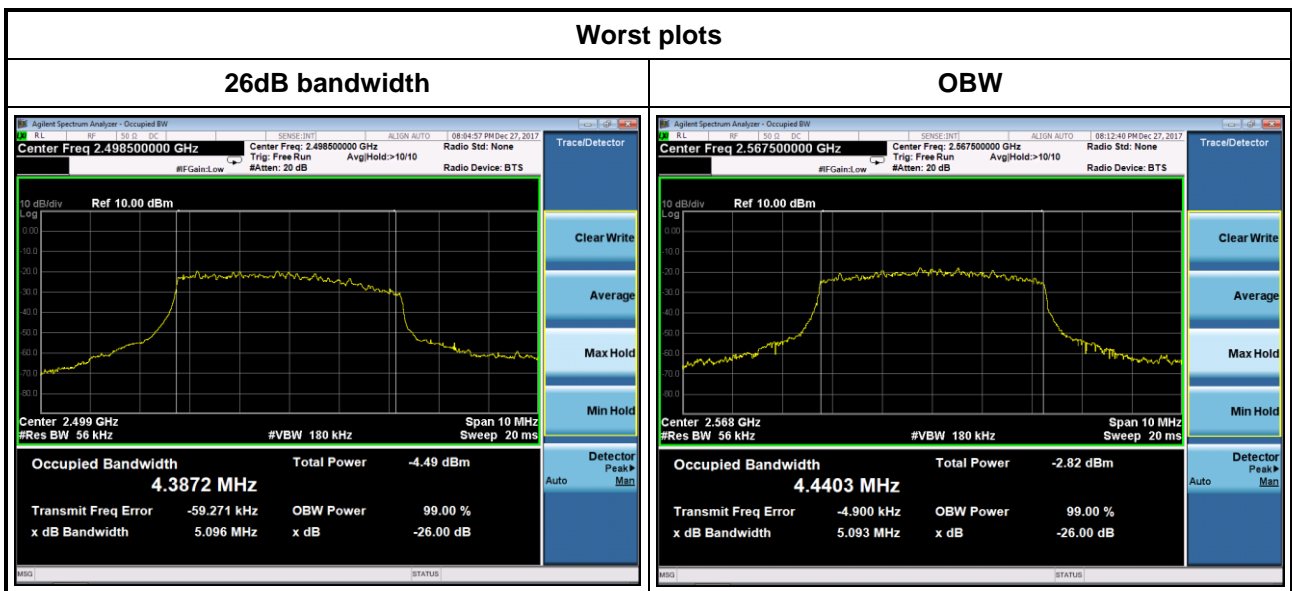
2. Set Detector = Peak, Trace mode = max hold, Sweep = auto couple, Allow the trace to stabilize.
3. Using 26dB and occupied bandwidth measurement function of spectrum analyzer to measure bandwidth.

3.5.2 Test Setup

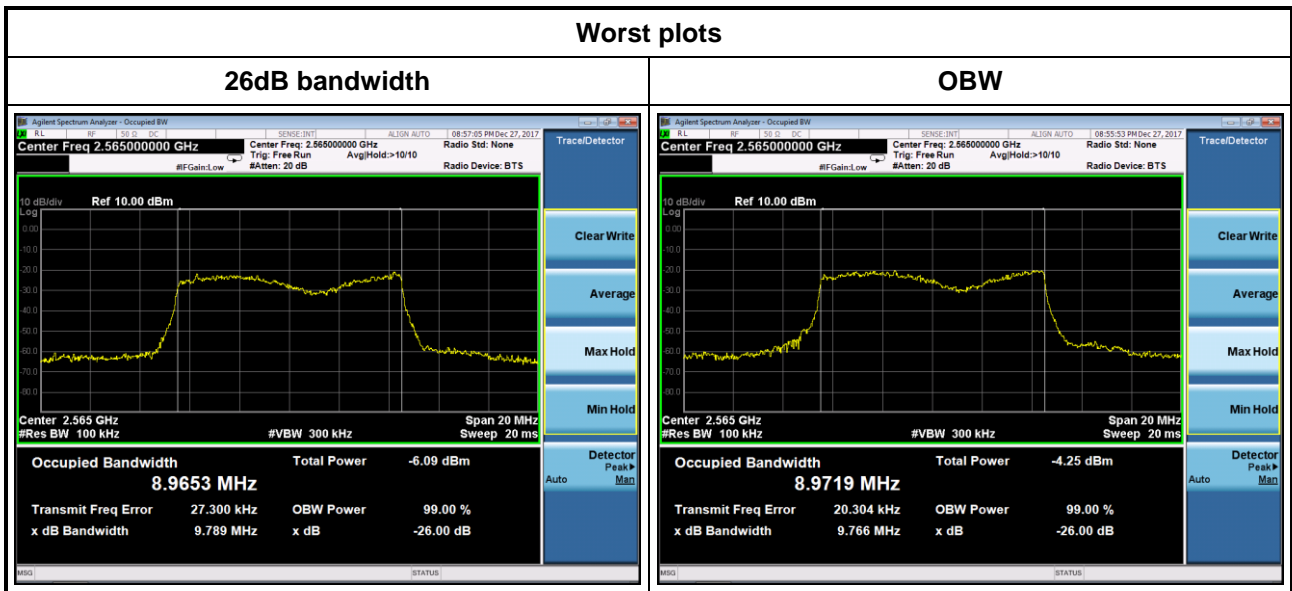


3.5.3 Test Result of Occupied Bandwidth_CDD mode

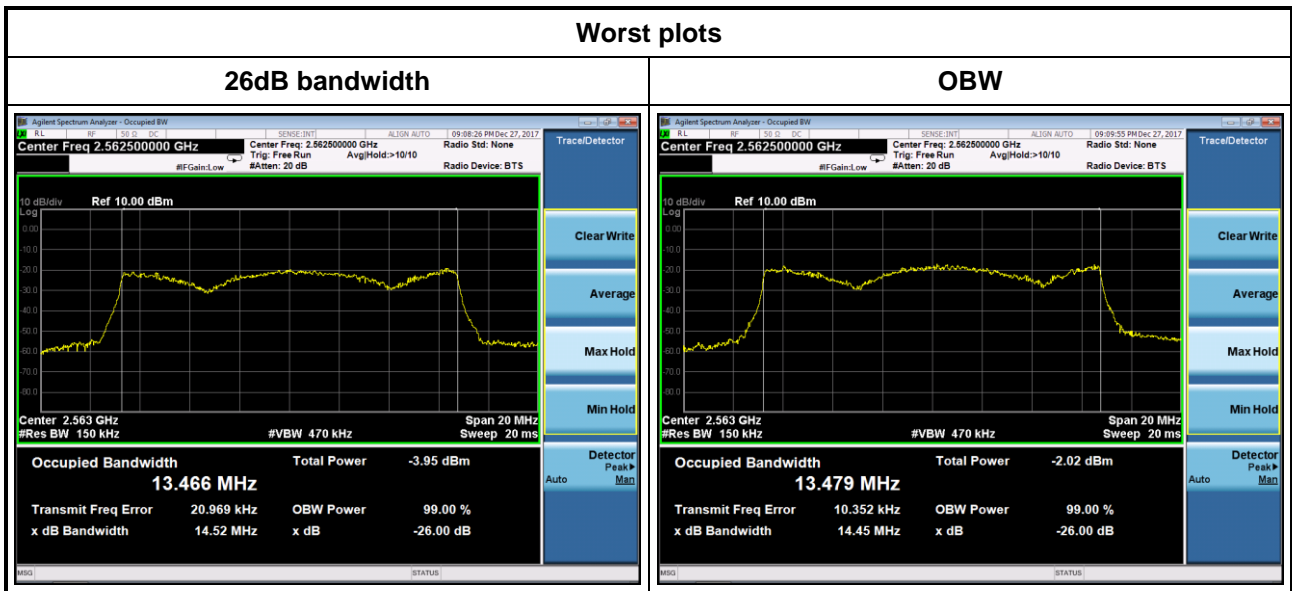
Channel Bandwidth (MHz)	Modulation	Frequency (MHz)	26dB BW (MHz)	99% OBW (MHz)
5	QPSK	2498.5	5.0380	4.4010
5	QPSK	2533.0	5.0950	4.3779
5	QPSK	2567.5	5.0000	4.4330
5	16QAM	2498.5	5.0520	4.4054
5	16QAM	2533.0	5.0460	4.3937
5	16QAM	2567.5	5.0510	4.4363
5	64QAM	2498.5	5.0960	4.3872
5	64QAM	2533.0	5.0080	4.3877
5	64QAM	2567.5	5.0930	4.4403



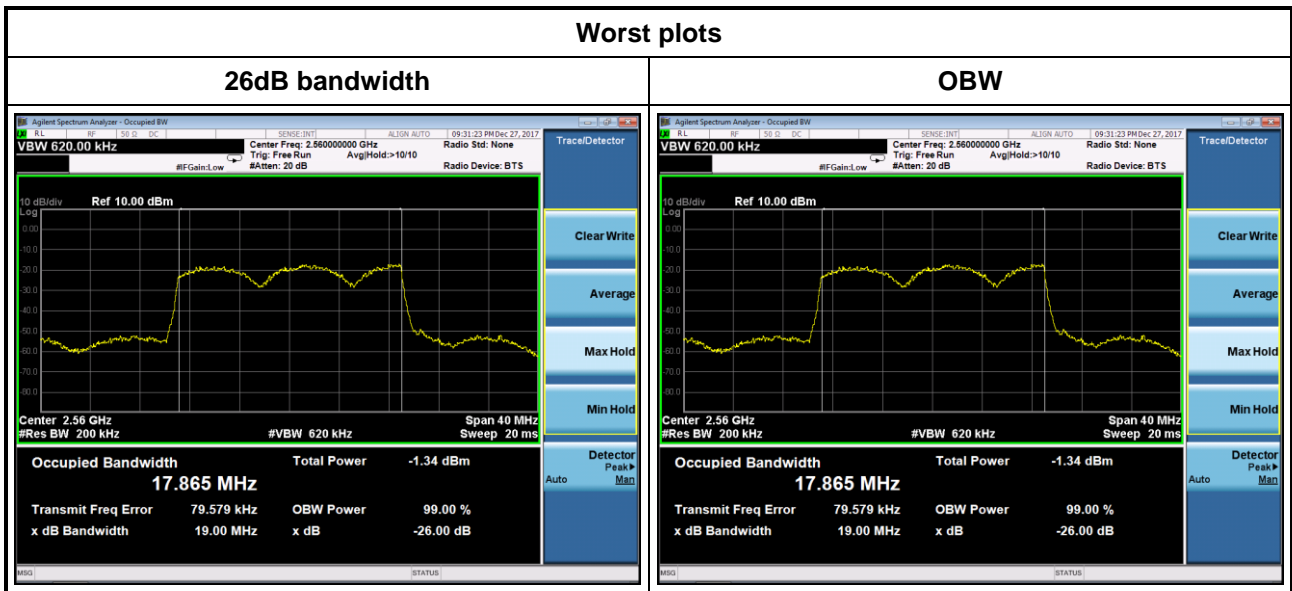
Channel Bandwidth (MHz)	Modulation	Frequency (MHz)	26dB BW (MHz)	99% OBW (MHz)
10	QPSK	2501.0	9.7110	8.9546
10	QPSK	2533.0	9.3820	8.7363
10	QPSK	2565.0	9.7660	8.9719
10	16QAM	2501.0	9.6900	8.9495
10	16QAM	2533.0	9.4040	8.7278
10	16QAM	2565.0	9.7620	8.9615
10	64QAM	2501.0	9.7670	8.9495
10	64QAM	2533.0	9.5060	8.7180
10	64QAM	2565.0	9.7890	8.9653



Channel Bandwidth (MHz)	Modulation	Frequency (MHz)	26dB BW (MHz)	99% OBW (MHz)
15	QPSK	2503.5	14.3300	13.4230
15	QPSK	2533.0	14.3700	13.4670
15	QPSK	2562.5	14.4500	13.4790
15	16QAM	2503.5	14.3500	13.4250
15	16QAM	2533.0	14.3200	13.4650
15	16QAM	2562.5	14.4100	13.4760
15	64QAM	2503.5	14.3600	13.4000
15	64QAM	2533.0	14.4000	13.4050
15	64QAM	2562.5	14.5200	13.4660

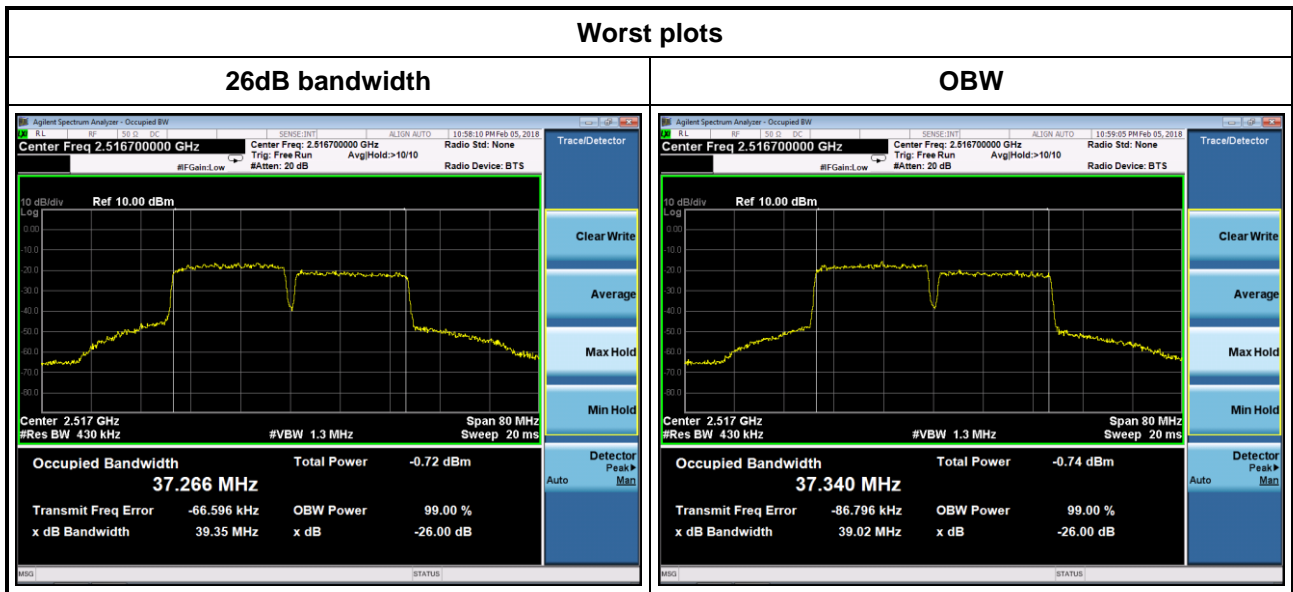


Channel Bandwidth (MHz)	Modulation	Frequency (MHz)	26dB BW (MHz)	99% OBW (MHz)
20	QPSK	2506.0	18.7800	17.3150
20	QPSK	2533.0	18.7800	17.7450
20	QPSK	2560.0	19.0000	17.8650
20	16QAM	2506.0	18.7200	17.6310
20	16QAM	2533.0	18.7100	17.7050
20	16QAM	2560.0	18.8100	17.7740
20	64QAM	2506.0	18.7700	17.5540
20	64QAM	2533.0	18.7000	17.7040
20	64QAM	2560.0	18.9300	17.8000



3.5.4 Test Result of Occupied Bandwidth_CA mode

Channel Bandwidth (MHz)	Modulation	PCC Freq. (MHz)	PCC Freq. (MHz)	26dB BW (MHz)	99% OBW (MHz)
20+20	QPSK	2506.8	2526.6	39.0200	37.3400
20+20	QPSK	2523.6	2543.4	38.8600	37.0820
20+20	QPSK	2538.2	2558.0	38.9200	37.2690
20+20	16QAM	2506.8	2526.6	39.0700	37.3060
20+20	16QAM	2523.6	2543.4	38.8400	37.0260
20+20	16QAM	2538.2	2558.0	38.9400	37.1930
20+20	64QAM	2506.8	2526.6	39.3500	37.2660
20+20	64QAM	2523.6	2543.4	38.7600	36.9530
20+20	64QAM	2538.2	2558.0	39.0400	37.1380



3.6 Frequency Stability

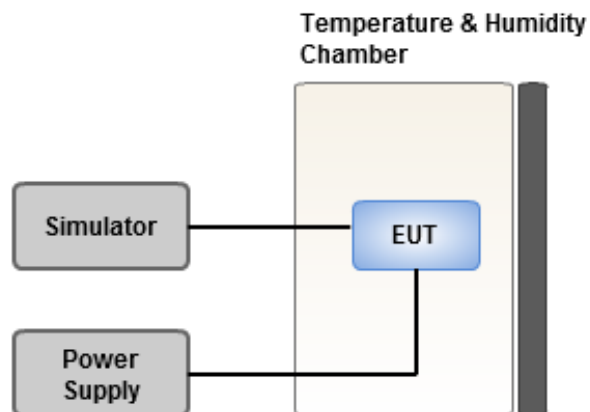
3.6.1 Limit of Frequency Stability

The frequency stability shall be sufficient to ensure that the fundamental emissions stay within the authorized bands of operation

3.6.2 Test Procedures

1. EUT was placed at temperature chamber and connected to an external power supply.
2. Temperature and voltage condition shall be tested to confirm frequency stability.
3. Temperature range is from -40~60°C and voltage range is from lowest to highest working voltage.
4. Tem Link up EUT and simulator. Confirm frequency drift value of simulator and record it.

3.6.3 Test Setup



3.6.4 Test Result of Frequency Stability_CDD mode

Temperature (°C)	Voltage (ac)	Frequency Drift (ppm)			
		CB: 5MHz	CB: 10MHz	CB: 15MHz	CB: 20MHz
60	120	-0.015	-0.014	-0.015	-0.014
50	120	-0.017	-0.016	-0.013	-0.012
40	120	-0.018	-0.015	-0.012	-0.013
30	120	-0.014	-0.016	-0.013	-0.015
20	120	-0.013	-0.012	-0.014	-0.012
10	120	-0.012	-0.014	-0.015	-0.013
0	120	-0.015	-0.014	-0.016	-0.015
-10	120	-0.014	-0.013	-0.017	-0.11
-20	120	-0.016	-0.015	-0.014	-0.013
-30	120	-0.017	-0.016	-0.018	-0.014
-40	120	-0.018	-0.019	-0.016	-0.012
20	138	-0.017	-0.018	-0.015	-0.015
20	102	-0.018	-0.019	-0.014	-0.016

3.6.5 Test Result of Frequency Stability_CA mode

Temperature (°C)	Voltage (ac)	Frequency Drift (ppm)
		CB: 20MHz+20MHz
60	120	-0.013
50	120	-0.014
40	120	-0.013
30	120	-0.012
20	120	-0.015
10	120	-0.016
0	120	-0.013
-10	120	-0.014
-20	120	-0.13
-30	120	-0.012
-40	120	-0.014
20	138	-0.150
20	102	-0.013

4 Test laboratory information

Established in 2012, ICC provides foremost EMC & RF Testing and advisory consultation services by our skilled engineers and technicians. Our services employ a wide variety of advanced edge test equipment and one of the widest certification extents in the business.

International Certification Corp (EMC and Wireless Communication Laboratory), it is our definitive objective is to institute long term, trust-based associations with our clients. The expectation we set up with our clients is based on outstanding service, practical expertise and devotion to a certified value structure. Our passion is to grant our clients with best EMC / RF services by oriented knowledgeable and accommodating staff.

Our Test sites are located at Linkou District and Kwei Shan District. Location map can be found on our website <http://www.icertifi.com.tw>.

Linkou

Tel: 886-2-2601-1640

No. 30-2, Ding Fwu Tsuen, Lin
Kou District, New Taipei City,
Taiwan, R.O.C.

Kwei Shan

Tel: 886-3-271-8666

No. 3-1, Lane 6, Wen San 3rd St.,
Kwei Shan District, Tao Yuan City
333, Taiwan, R.O.C.

Kwei Shan Site II

Tel: 886-3-271-8640

No. 14-1, Lane 19, Wen San 3rd
St., Kwei Shan District, Tao Yuan
City 333, Taiwan, R.O.C..

If you have any suggestion, please feel free to contact us as below information

Tel: 886-3-271-8666

Fax: 886-3-318-0155

Email: ICC_Service@icertifi.com.tw

==END==