

3.4.5 Measured Channel Edge Result_CDD mode

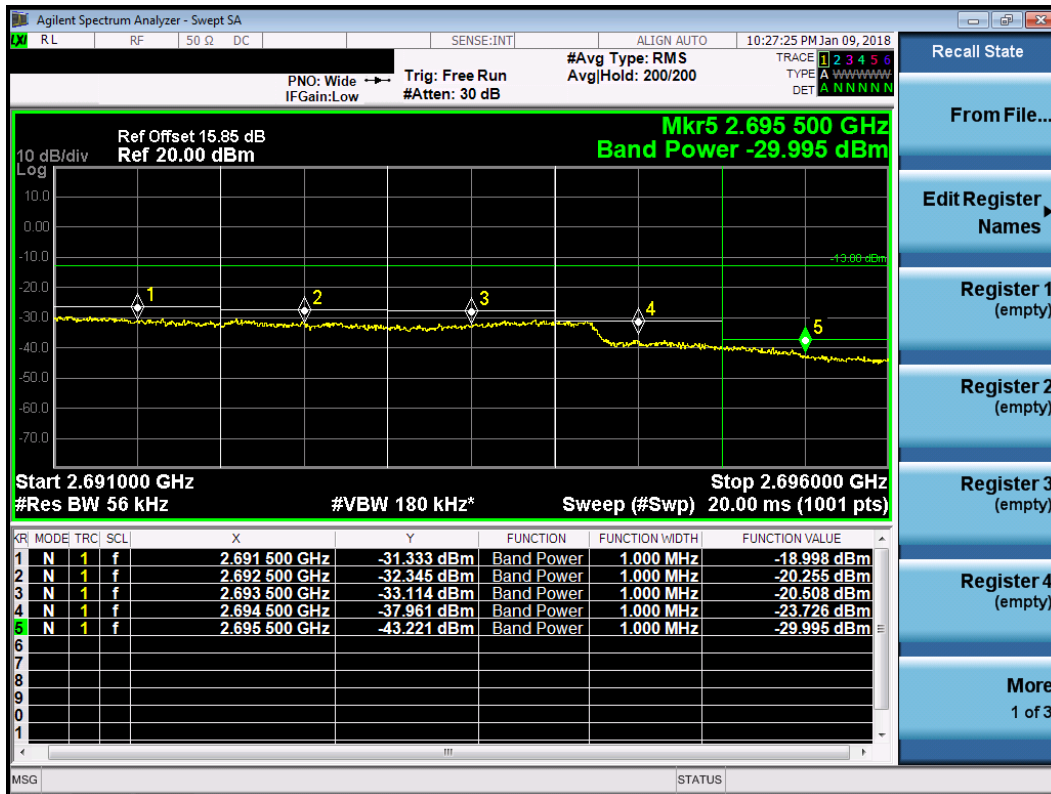
LTE Band 41, CB: 5MHz

Measured Channel Edge Result										
Modulation	Freq. (MHz)	RB Size	RB offset	Range (MHz)	ANT 0 (dBm)	ANT 1 (dBm)	ANT 2 (dBm)	ANT 3 (dBm)	Total (dBm)	Limit (dBm)
QPSK	2621.3	1	0	2617.8~2616.8	-33.697	-33.141	-32.035	-32.832	-26.86	-13.00
				2616.8~2615.8	-41.419	-41.102	-40.447	-40.894	-34.93	-13.00
				2615.8~2614.8	-40.246	-40.019	-30.956	-32.297	-28.00	-13.00
				2614.8~2613.8	-41.460	-41.286	-32.212	-33.518	-29.24	-13.00
				2613.8~2612.8	-45.009	-44.823	-44.728	-44.975	-38.86	-13.00
	2621.3	25	0	2617.8~2616.8	-21.437	-21.669	-18.544	-21.066	-14.46	-13.00
				2616.8~2615.8	-23.758	-23.556	-21.075	-23.722	-16.85	-13.00
				2615.8~2614.8	-27.011	-27.500	-25.092	-27.607	-20.66	-13.00
				2614.8~2613.8	-30.956	-31.981	-30.175	-32.410	-25.27	-13.00
				2613.8~2612.8	-35.725	-35.344	-35.704	-35.910	-29.65	-13.00
	2687.5	1	24	2691~2692	-33.792	-33.641	-31.112	-31.179	-26.22	-13.00
				2692~2693	-41.176	-40.823	-39.728	-39.209	-34.14	-13.00
				2693~2694	-41.014	-40.549	-31.005	-30.040	-27.10	-13.00
				2694~2695	-42.171	-41.689	-32.394	-31.221	-28.36	-13.00
				2695~2696	-44.788	-44.753	-44.693	-44.500	-38.66	-13.00
	2687.5	25	0	2691~2692	-22.990	-22.082	-18.998	-19.315	-14.50	-13.00
				2692~2693	-24.201	-24.418	-20.255	-21.197	-16.12	-13.00
				2693~2694	-23.920	-26.247	-20.508	-22.177	-16.70	-13.00
				2694~2695	-26.645	-28.037	-23.726	-24.834	-19.48	-13.00
				2695~2696	-31.990	-31.420	-29.995	-28.889	-24.38	-13.00

Worst Plot of QPSK, Low Channel



Worst Plot of QPSK, High Channel



Measured Channel Edge Result										
Modulation	Freq. (MHz)	RB Size	RB offset	Range (MHz)	ANT 0 (dBm)	ANT 1 (dBm)	ANT 2 (dBm)	ANT 3 (dBm)	Total (dBm)	Limit (dBm)
16QAM	2621.3	1	0	2617.8~2616.8	-33.542	-33.726	-32.386	-33.115	-27.14	-13.00
				2616.8~2615.8	-41.189	-41.259	-40.513	-41.011	-34.96	-13.00
				2615.8~2614.8	-39.941	-40.465	-31.794	-33.038	-28.70	-13.00
				2614.8~2613.8	-41.206	-41.714	-32.881	-33.916	-29.73	-13.00
				2613.8~2612.8	-45.001	-44.871	-44.763	-45.080	-38.91	-13.00
	2621.3	25	0	2617.8~2616.8	-22.736	-23.850	-21.257	-24.169	-16.83	-13.00
				2616.8~2615.8	-25.641	-26.755	-24.059	-27.165	-19.71	-13.00
				2615.8~2614.8	-29.114	-30.640	-28.098	-31.121	-23.55	-13.00
				2614.8~2613.8	-33.020	-35.225	-33.017	-35.227	-27.96	-13.00
				2613.8~2612.8	-35.865	-37.112	-36.321	-37.173	-30.56	-13.00
	2687.5	1	24	2691~2692	-34.394	-34.113	-32.020	-31.983	-26.96	-13.00
				2692~2693	-41.489	-41.176	-40.227	-39.797	-34.60	-13.00
				2693~2694	-41.115	-41.024	-32.201	-30.959	-28.07	-13.00
				2694~2695	-42.227	-42.154	-33.165	-32.000	-29.09	-13.00
				2695~2696	-44.839	-44.817	-44.745	-44.651	-38.74	-13.00
	2687.5	25	0	2691~2692	-22.846	-22.145	-19.472	-20.236	-14.94	-13.00
				2692~2693	-24.236	-24.309	-21.044	-22.054	-16.66	-13.00
				2693~2694	-25.680	-26.687	-22.921	-23.832	-18.51	-13.00
				2694~2695	-28.362	-29.736	-25.981	-26.593	-21.41	-13.00
				2695~2696	-32.145	-32.610	-29.885	-29.772	-24.90	-13.00

Worst Plot of 16QAM, Low Channel



Worst Plot of 16QAM, High Channel

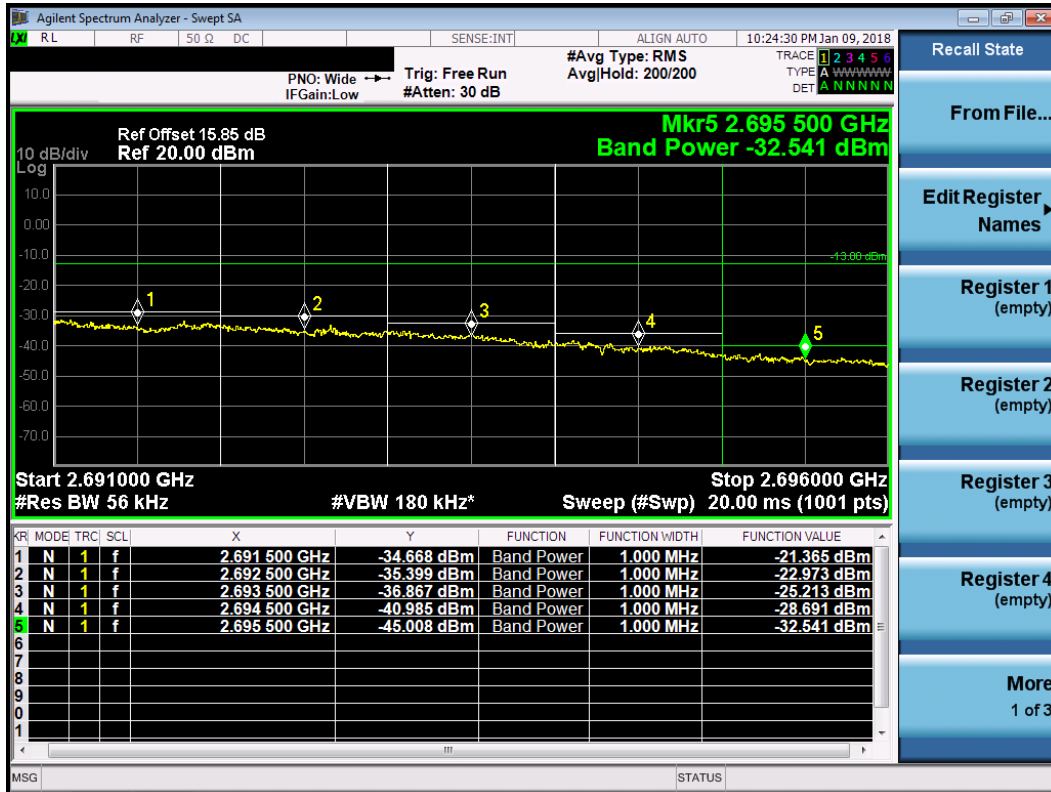


Measured Channel Edge Result										
Modulation	Freq. (MHz)	RB Size	RB offset	Range (MHz)	ANT 0 (dBm)	ANT 1 (dBm)	ANT 2 (dBm)	ANT 3 (dBm)	Total (dBm)	Limit (dBm)
64QAM	2621.3	1	0	2617.8~2616.8	-38.140	-38.113	-38.986	-39.373	-32.60	-13.00
				2616.8~2615.8	-43.046	-42.890	-43.141	-43.288	-37.07	-13.00
				2615.8~2614.8	-42.039	-41.859	-33.928	-35.897	-31.03	-13.00
				2614.8~2613.8	-42.668	-42.484	-34.597	-36.457	-31.65	-13.00
				2613.8~2612.8	-45.305	-45.217	-45.171	-45.317	-39.23	-13.00
	2621.3	25	0	2617.8~2616.8	-26.204	-26.745	-25.986	-28.171	-20.68	-13.00
				2616.8~2615.8	-28.609	-29.366	-28.790	-30.998	-23.32	-13.00
				2615.8~2614.8	-31.632	-33.076	-32.279	-34.420	-26.71	-13.00
				2614.8~2613.8	-34.807	-36.688	-35.890	-36.827	-29.96	-13.00
				2613.8~2612.8	-36.736	-37.887	-37.750	-38.035	-31.55	-13.00
	2687.5	1	24	2691~2692	-38.077	-37.752	-35.652	-35.714	-30.64	-13.00
				2692~2693	-42.909	-42.396	-41.998	-41.683	-36.20	-13.00
				2693~2694	-42.932	-42.862	-35.486	-34.216	-31.17	-13.00
				2694~2695	-43.693	-43.569	-36.193	-34.853	-31.84	-13.00
				2695~2696	-44.982	-44.921	-45.027	-45.031	-38.97	-13.00
	2687.5	25	0	2691~2692	-24.175	-23.775	-21.365	-22.599	-16.82	-13.00
				2692~2693	-25.710	-26.165	-22.973	-24.533	-18.64	-13.00
				2693~2694	-27.653	-28.766	-25.231	-26.617	-20.85	-13.00
				2694~2695	-30.740	-32.055	-28.691	-29.580	-24.07	-13.00
				2695~2696	-33.936	-34.326	-32.541	-32.297	-27.17	-13.00

Worst Plot of 64QAM, Low Channel



Worst Plot of 64QAM, High Channel



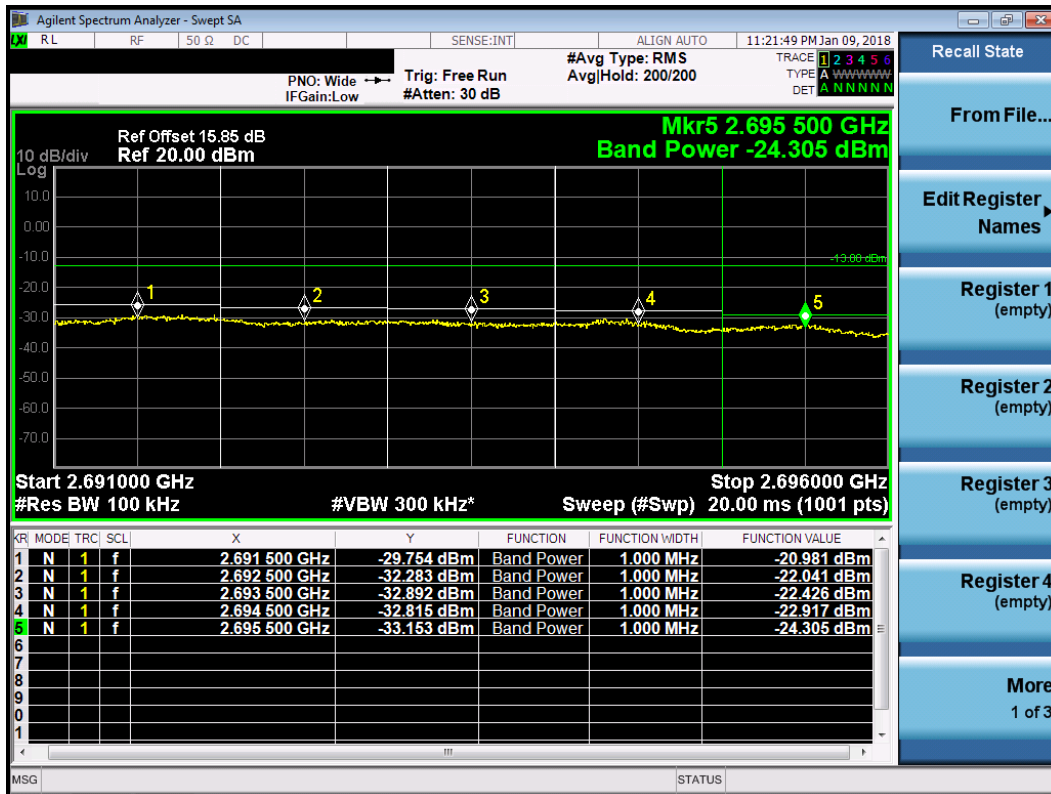
LTE Band 41, CB: 10MHz

Measured Channel Edge Result										
Modulation	Freq. (MHz)	RB Size	RB offset	Range (MHz)	ANT 0 (dBm)	ANT 1 (dBm)	ANT 2 (dBm)	ANT 3 (dBm)	Total (dBm)	Limit (dBm)
QPSK	2623.8	1	0	2617.8~2616.8	-32.948	-32.358	-32.122	-32.703	-26.50	-13.00
				2616.8~2615.8	-39.241	-38.763	-38.360	-38.845	-32.77	-13.00
				2615.8~2614.8	-38.750	-37.340	-39.947	-39.811	-32.81	-13.00
				2614.8~2613.8	-43.530	-42.993	-43.381	-43.612	-37.35	-13.00
				2613.8~2612.8	-44.635	-44.368	-44.445	-44.668	-38.51	-13.00
	2623.8	50	0	2617.8~2616.8	-23.319	-23.244	-20.461	-23.399	-16.39	-13.00
				2616.8~2615.8	-23.973	-24.086	-21.478	-24.383	-17.29	-13.00
				2615.8~2614.8	-25.154	-25.290	-22.393	-25.722	-18.40	-13.00
				2614.8~2613.8	-26.467	-26.201	-23.499	-26.779	-19.50	-13.00
				2613.8~2612.8	-28.148	-27.935	-25.452	-28.436	-21.29	-13.00
	2685.0	1	49	2691~2692	-33.663	-33.297	-32.789	-33.071	-27.17	-13.00
				2692~2693	-39.235	-38.687	-38.687	-38.361	-32.71	-13.00
				2693~2694	-40.582	-39.895	-40.020	-40.076	-34.11	-13.00
				2694~2695	-43.121	-42.864	-42.982	-42.823	-36.93	-13.00
				2695~2696	-44.113	-43.916	-44.162	-44.059	-38.04	-13.00
	2685.0	50	0	2691~2692	-23.220	-21.134	-21.093	-20.981	-15.49	-13.00
				2692~2693	-23.718	-22.120	-21.635	-22.041	-16.29	-13.00
				2693~2694	-23.739	-22.550	-21.681	-22.426	-16.52	-13.00
				2694~2695	-24.067	-23.569	-22.248	-22.917	-17.13	-13.00
				2695~2696	-24.989	-25.347	-23.168	-24.305	-18.35	-13.00

Worst Plot of QPSK, Low Channel

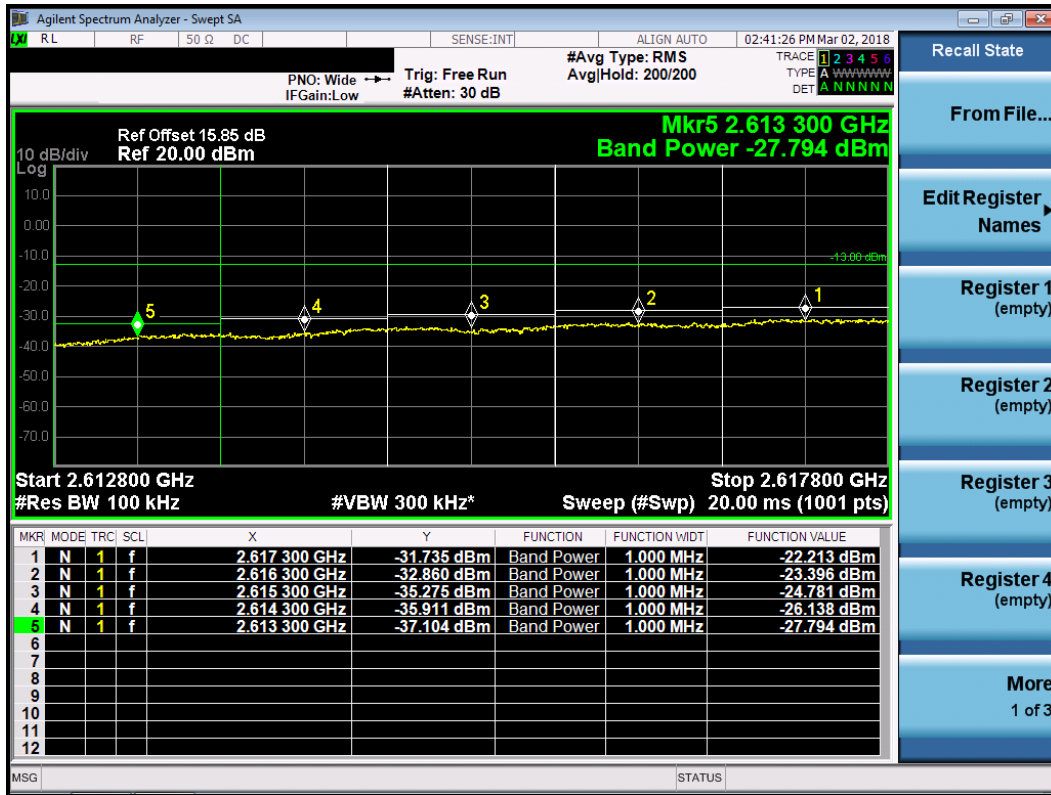


Worst Plot of QPSK, High Channel

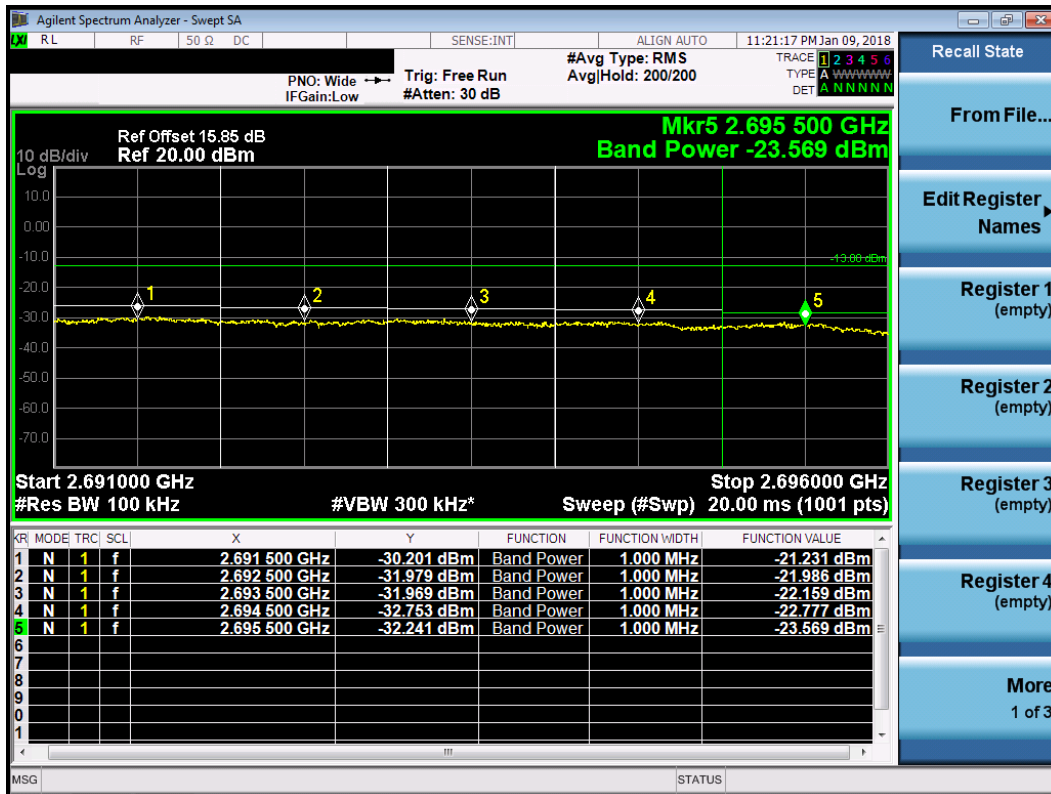


Measured Channel Edge Result										
Modulation	Freq. (MHz)	RB Size	RB offset	Range (MHz)	ANT 0 (dBm)	ANT 1 (dBm)	ANT 2 (dBm)	ANT 3 (dBm)	Total (dBm)	Limit (dBm)
16QAM	2623.8	1	0	2617.8~2616.8	-33.127	-32.648	-32.551	-33.193	-26.85	-13.00
				2616.8~2615.8	-39.379	-39.025	-38.628	-39.170	-33.02	-13.00
				2615.8~2614.8	-39.865	-38.830	-40.002	-40.174	-33.66	-13.00
				2614.8~2613.8	-43.734	-43.329	-43.582	-43.909	-37.61	-13.00
				2613.8~2612.8	-44.750	-44.528	-44.545	-44.841	-38.64	-13.00
	2623.8	50	0	2617.8~2616.8	-23.280	-24.053	-22.213	-25.297	-17.55	-13.00
				2616.8~2615.8	-24.363	-24.916	-23.396	-26.531	-18.64	-13.00
				2615.8~2614.8	-25.575	-26.204	-24.781	-27.897	-19.95	-13.00
				2614.8~2613.8	-26.854	-27.506	-26.138	-29.325	-21.28	-13.00
				2613.8~2612.8	-28.600	-29.415	-27.794	-31.132	-23.05	-13.00
	2685.0	1	49	2691~2692	-35.092	-34.336	-33.810	-34.000	-28.26	-13.00
				2692~2693	-40.151	-39.565	-39.251	-39.123	-33.48	-13.00
				2693~2694	-39.365	-39.003	-40.738	-40.886	-33.90	-13.00
				2694~2695	-43.368	-43.217	-43.345	-43.291	-37.28	-13.00
				2695~2696	-44.499	-44.340	-44.384	-44.304	-38.36	-13.00
	2685.0	50	0	2691~2692	-25.029	-23.661	-21.231	-21.486	-16.56	-13.00
				2692~2693	-25.881	-24.624	-21.986	-22.259	-17.37	-13.00
				2693~2694	-26.032	-24.751	-22.159	-22.639	-17.60	-13.00
				2694~2695	-26.663	-25.510	-22.777	-23.572	-18.35	-13.00
				2695~2696	-27.578	-27.104	-23.569	-24.845	-19.44	-13.00

Worst Plot of 16QAM, Low Channel

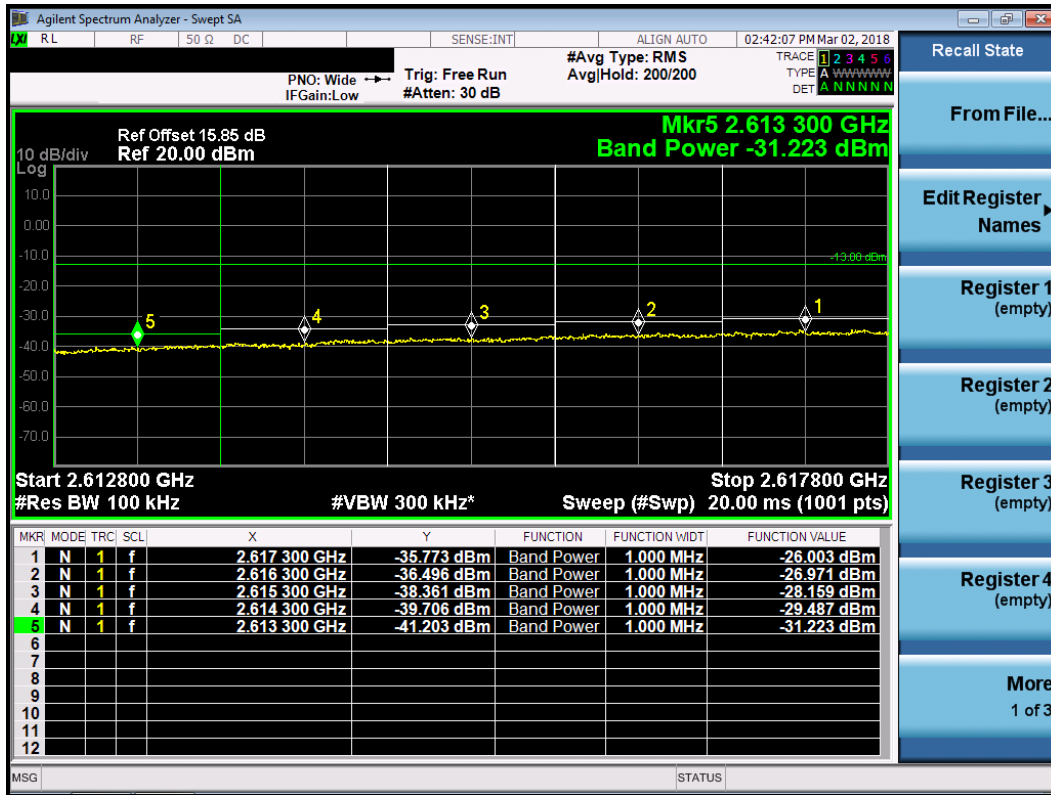


Worst Plot of 16QAM, High Channel

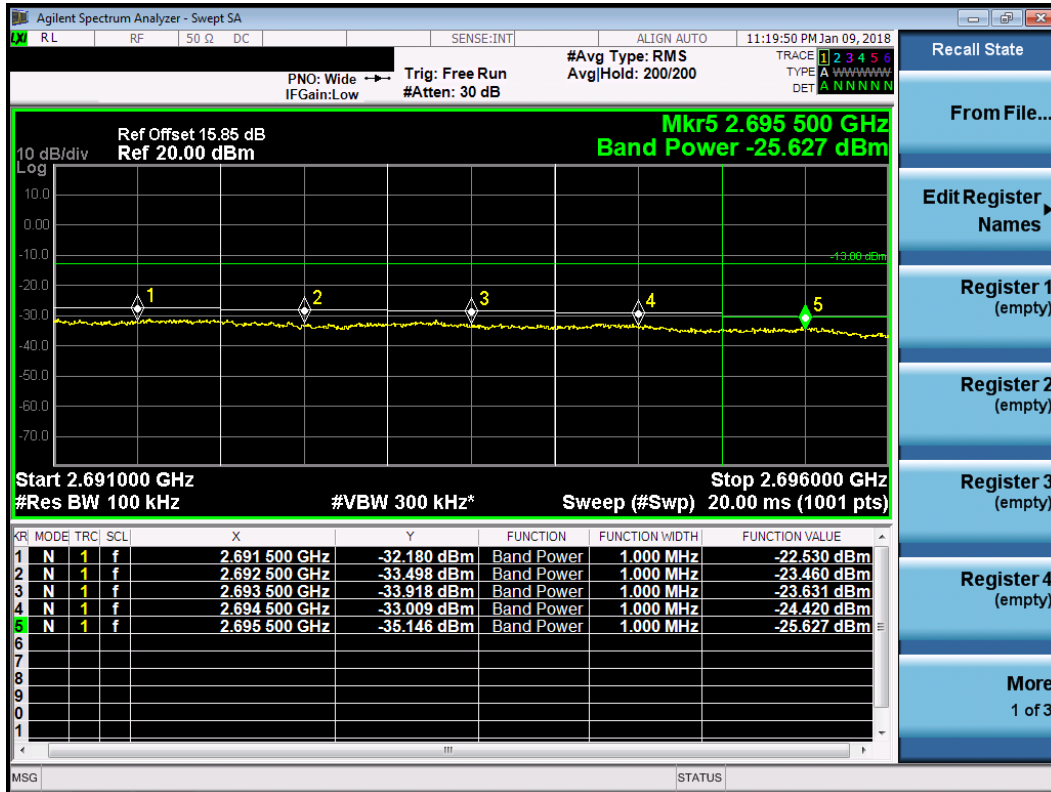


Measured Channel Edge Result										
Modulation	Freq. (MHz)	RB Size	RB offset	Range (MHz)	ANT 0 (dBm)	ANT 1 (dBm)	ANT 2 (dBm)	ANT 3 (dBm)	Total (dBm)	Limit (dBm)
64QAM	2623.8	1	0	2617.8~2616.8	-37.484	-37.321	-37.760	-38.124	-31.64	-13.00
				2616.8~2615.8	-42.009	-41.950	-41.976	-42.270	-36.03	-13.00
				2615.8~2614.8	-41.147	-40.891	-40.924	-41.141	-35.00	-13.00
				2614.8~2613.8	-44.286	-44.184	-44.375	-44.645	-38.35	-13.00
				2613.8~2612.8	-44.965	-44.928	-44.905	-45.246	-38.99	-13.00
	2623.8	50	0	2617.8~2616.8	-26.003	-27.061	-26.652	-28.577	-20.95	-13.00
				2616.8~2615.8	-26.971	-28.137	-27.915	-29.884	-22.08	-13.00
				2615.8~2614.8	-28.159	-29.214	-29.191	-31.289	-23.30	-13.00
				2614.8~2613.8	-29.487	-30.455	-30.418	-32.870	-24.62	-13.00
				2613.8~2612.8	-31.223	-32.206	-32.105	-34.568	-26.34	-13.00
	2685.0	1	49	2691~2692	-33.301	-32.645	-31.433	-31.704	-26.19	-13.00
				2692~2693	-38.954	-38.568	-37.406	-37.734	-32.10	-13.00
				2693~2694	-40.355	-39.684	-40.361	-40.759	-34.25	-13.00
				2694~2695	-43.503	-43.294	-42.888	-43.490	-37.27	-13.00
				2695~2696	-44.453	-44.309	-43.843	-44.451	-38.24	-13.00
	2685.0	50	0	2691~2692	-25.317	-24.122	-22.530	-23.004	-17.59	-13.00
				2692~2693	-26.255	-24.935	-23.460	-23.935	-18.50	-13.00
				2693~2694	-26.670	-25.519	-23.631	-24.426	-18.89	-13.00
				2694~2695	-27.516	-26.674	-24.420	-25.262	-19.78	-13.00
				2695~2696	-28.946	-28.580	-25.627	-26.899	-21.28	-13.00

Worst Plot of 64QAM, Low Channel



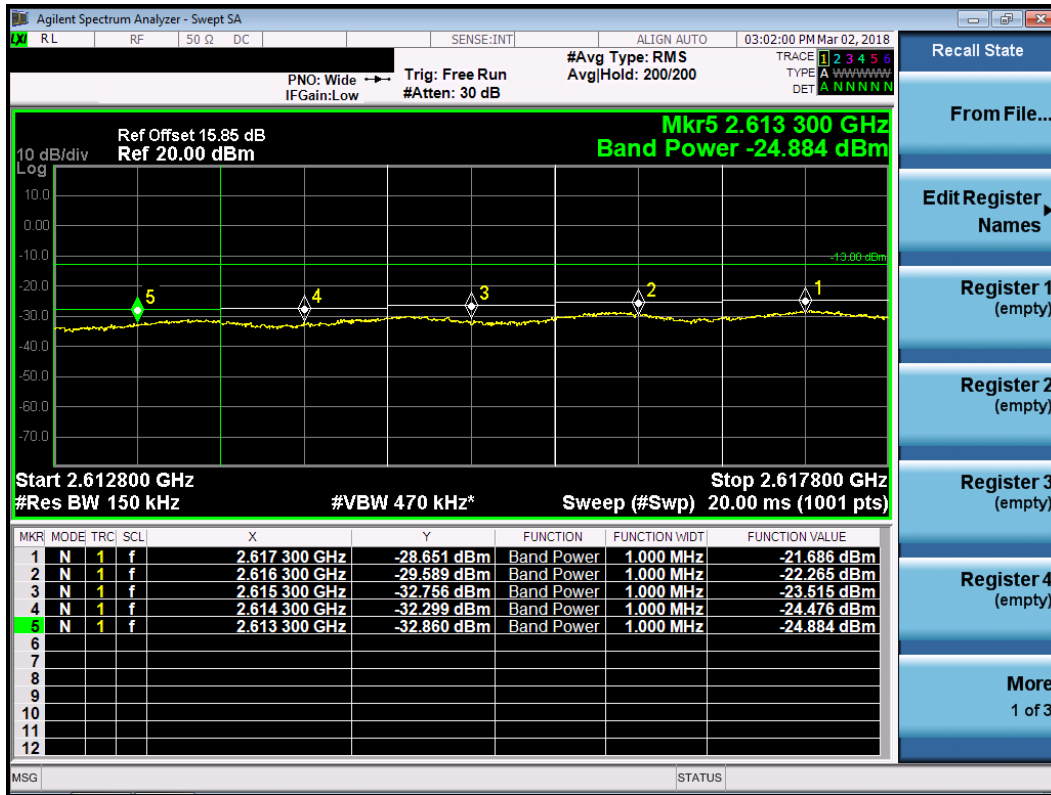
Worst Plot of 64QAM, High Channel



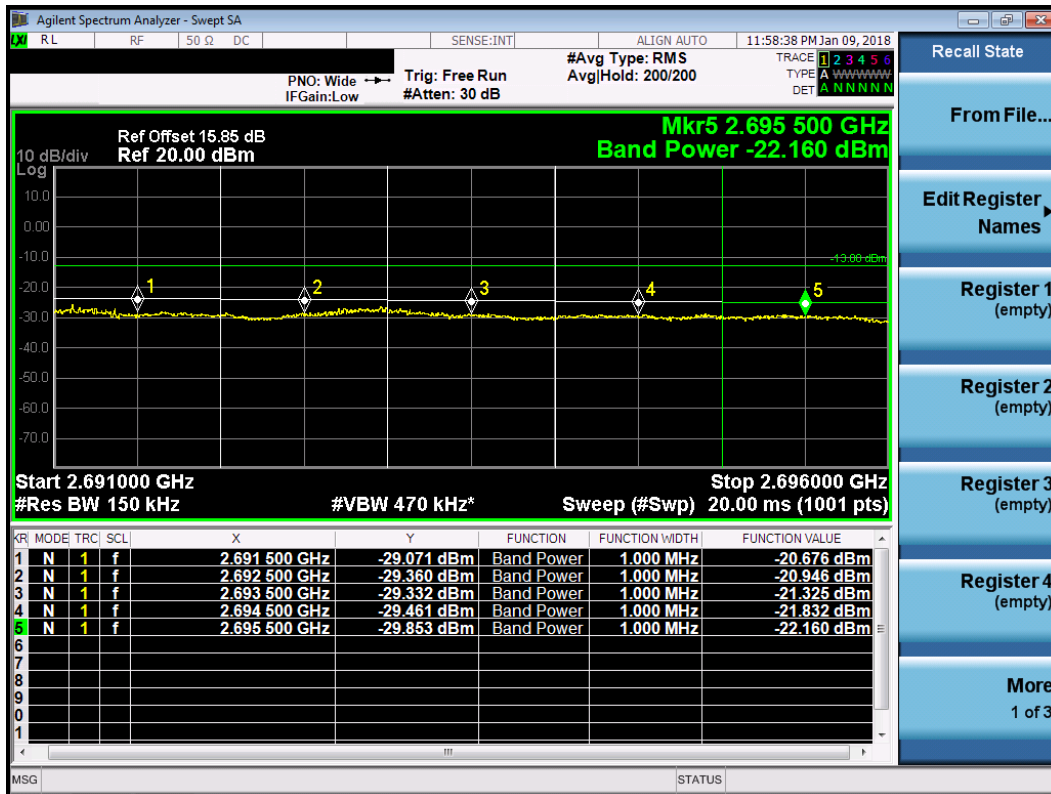
LTE Band 41, CB: 15MHz

Measured Channel Edge Result										
Modulation	Freq. (MHz)	RB Size	RB offset	Range (MHz)	ANT 0 (dBm)	ANT 1 (dBm)	ANT 2 (dBm)	ANT 3 (dBm)	Total (dBm)	Limit (dBm)
QPSK	2626.3	1	0	2617.8~2616.8	-33.485	-32.908	-33.065	-33.593	-27.23	-13.00
				2616.8~2615.8	-37.926	-37.393	-37.029	-37.648	-31.47	-13.00
				2615.8~2614.8	-40.874	-40.434	-39.915	-40.496	-34.40	-13.00
				2614.8~2613.8	-42.870	-42.439	-42.228	-42.753	-36.54	-13.00
				2613.8~2612.8	-38.327	-37.151	-34.440	-36.058	-30.24	-13.00
	2626.3	75	0	2617.8~2616.8	-25.563	-24.424	-21.686	-25.651	-17.99	-13.00
				2616.8~2615.8	-26.291	-24.953	-22.265	-26.003	-18.54	-13.00
				2615.8~2614.8	-27.090	-25.727	-23.515	-26.760	-19.51	-13.00
				2614.8~2613.8	-27.542	-26.480	-24.476	-27.475	-20.28	-13.00
				2613.8~2612.8	-28.104	-27.231	-24.884	-28.073	-20.84	-13.00
	2682.5	1	74	2691~2692	-34.340	-33.868	-33.626	-33.737	-27.86	-13.00
				2692~2693	-37.911	-37.340	-37.290	-37.217	-31.41	-13.00
				2693~2694	-40.430	-40.048	-39.638	-39.885	-33.97	-13.00
				2694~2695	-42.286	-42.123	-41.796	-42.038	-36.04	-13.00
				2695~2696	-39.539	-38.781	-33.635	-33.229	-29.39	-13.00
	2682.5	75	0	2691~2692	-25.398	-22.939	-20.676	-21.518	-16.28	-13.00
				2692~2693	-25.260	-22.713	-20.946	-21.507	-16.30	-13.00
				2693~2694	-26.008	-23.335	-21.325	-22.485	-16.95	-13.00
				2694~2695	-26.772	-24.542	-21.832	-23.507	-17.79	-13.00
				2695~2696	-26.472	-24.966	-22.160	-23.521	-17.97	-13.00

Worst Plot of QPSK, Low Channel

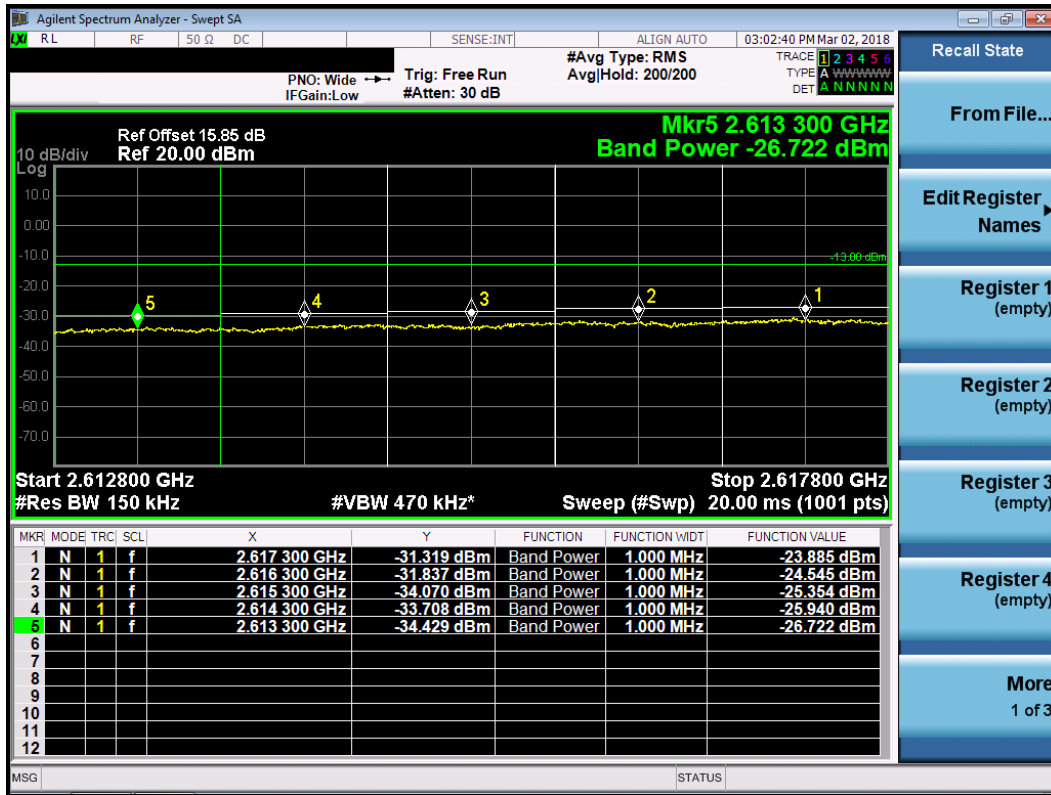


Worst Plot of QPSK, High Channel

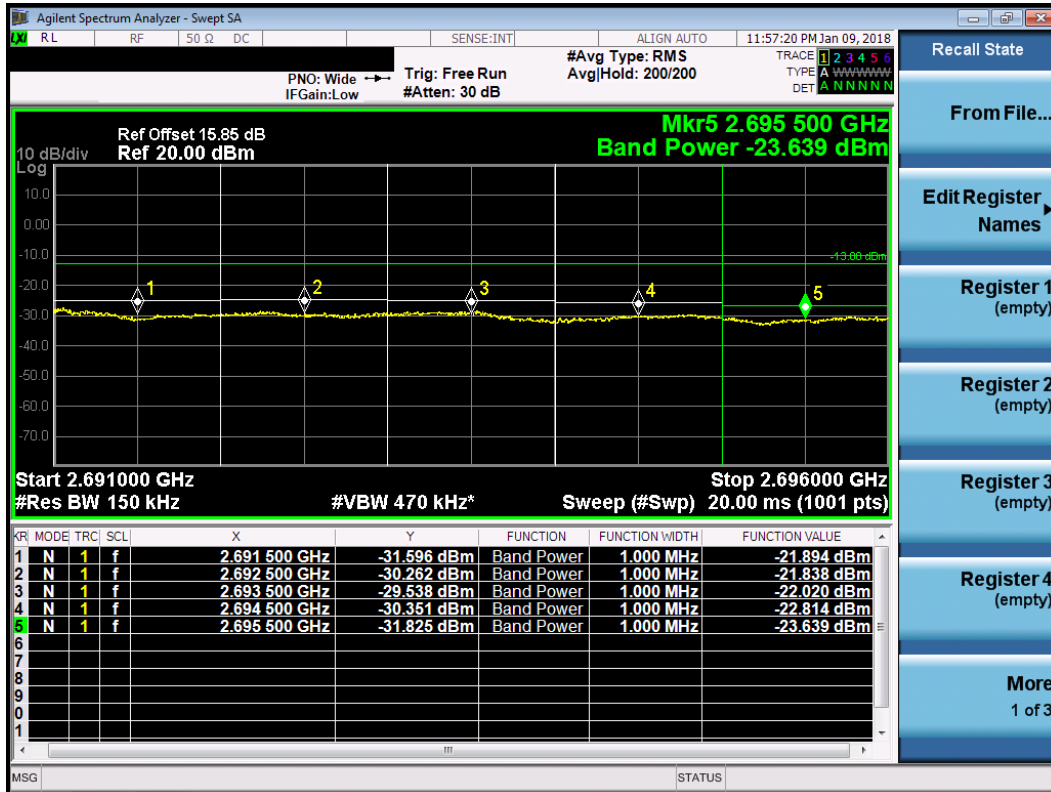


Measured Channel Edge Result										
Modulation	Freq. (MHz)	RB Size	RB offset	Range (MHz)	ANT 0 (dBm)	ANT 1 (dBm)	ANT 2 (dBm)	ANT 3 (dBm)	Total (dBm)	Limit (dBm)
16QAM	2626.3	1	0	2617.8~2616.8	-33.482	-33.330	-33.553	-34.019	-27.57	-13.00
				2616.8~2615.8	-38.056	-37.864	-37.735	-38.124	-31.92	-13.00
				2615.8~2614.8	-41.055	-40.786	-40.679	-41.008	-34.86	-13.00
				2614.8~2613.8	-43.033	-42.871	-42.990	-43.209	-37.00	-13.00
				2613.8~2612.8	-40.018	-39.931	-35.867	-36.977	-31.80	-13.00
	2626.3	75	0	2617.8~2616.8	-23.885	-24.544	-24.419	-27.542	-18.87	-13.00
				2616.8~2615.8	-24.545	-25.090	-24.681	-27.965	-19.35	-13.00
				2615.8~2614.8	-25.354	-25.912	-25.431	-28.856	-20.16	-13.00
				2614.8~2613.8	-25.940	-26.488	-26.457	-29.619	-20.89	-13.00
				2613.8~2612.8	-26.722	-27.252	-27.431	-30.422	-21.72	-13.00
	2682.5	1	74	2691~2692	-35.531	-34.682	-34.483	-34.460	-28.75	-13.00
				2692~2693	-39.014	-38.284	-37.890	-37.836	-32.21	-13.00
				2693~2694	-41.200	-40.756	-40.409	-40.461	-34.67	-13.00
				2694~2695	-42.909	-42.618	-42.390	-42.424	-36.56	-13.00
				2695~2696	-39.451	-38.775	-35.174	-34.735	-30.53	-13.00
	2682.5	75	0	2691~2692	-25.468	-23.379	-21.894	-23.025	-17.24	-13.00
				2692~2693	-25.193	-23.104	-21.838	-22.877	-17.07	-13.00
				2693~2694	-25.506	-23.711	-22.020	-23.311	-17.44	-13.00
				2694~2695	-26.480	-24.951	-22.814	-24.132	-18.37	-13.00
				2695~2696	-26.904	-25.491	-23.639	-24.581	-18.97	-13.00

Worst Plot of 16QAM, Low Channel

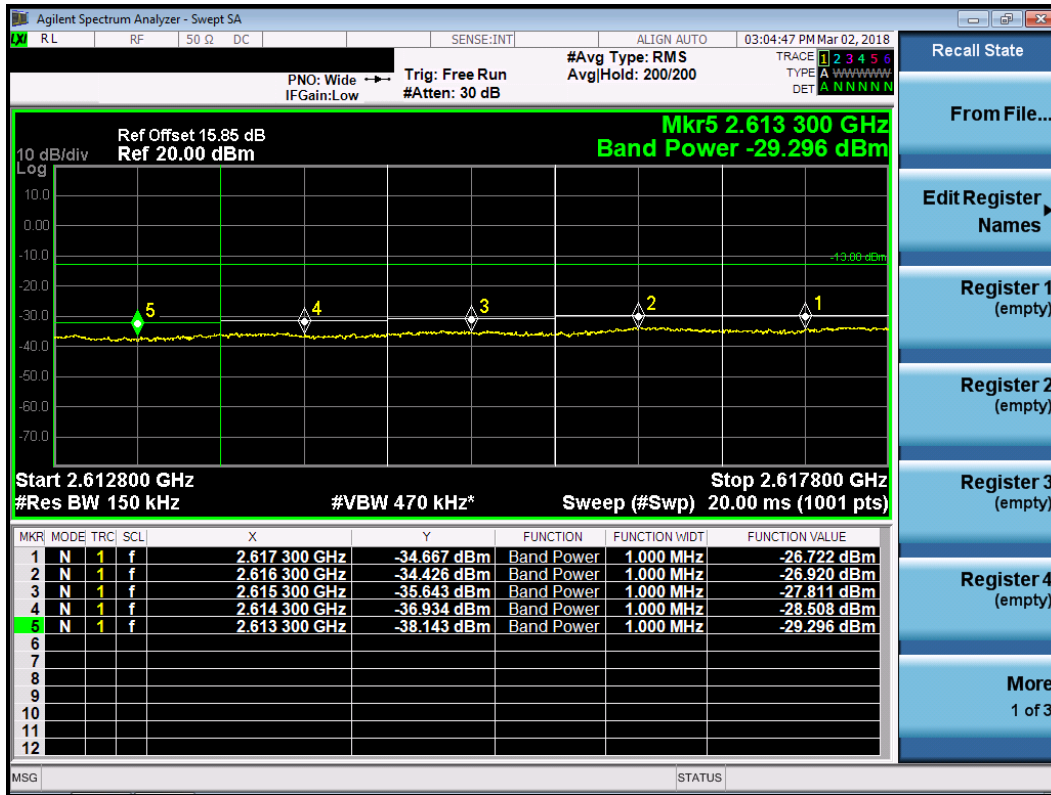


Worst Plot of 16QAM, High Channel

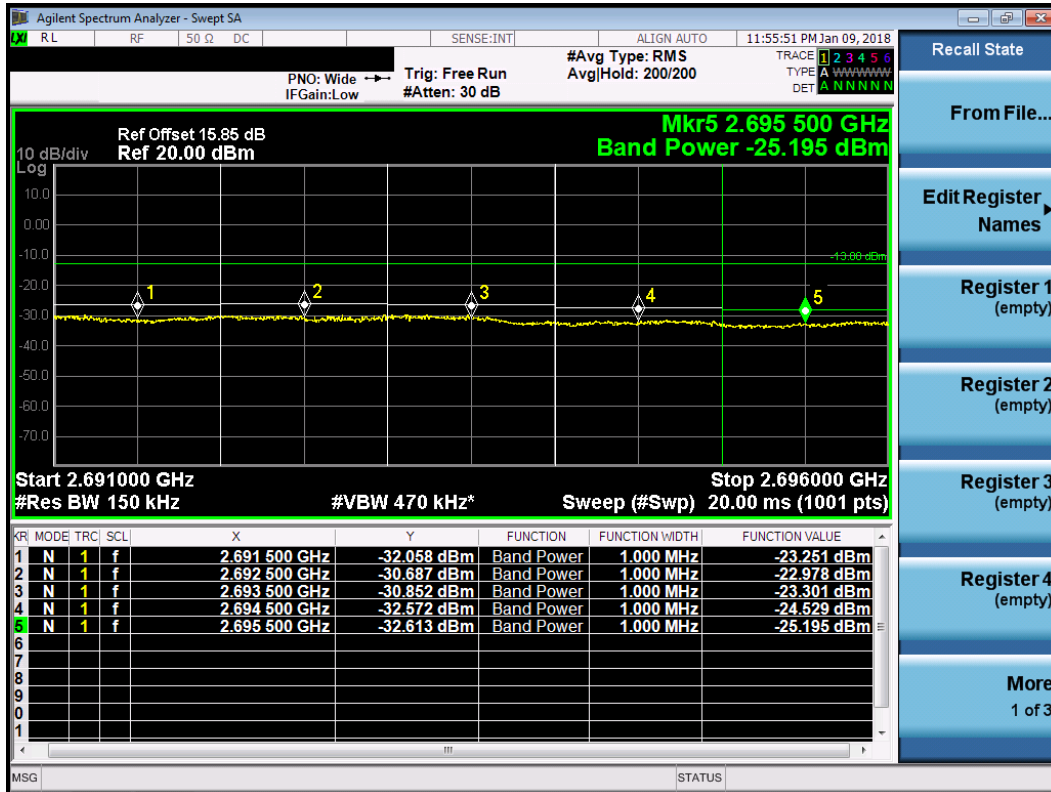


Measured Channel Edge Result										
Modulation	Freq. (MHz)	RB Size	RB offset	Range (MHz)	ANT 0 (dBm)	ANT 1 (dBm)	ANT 2 (dBm)	ANT 3 (dBm)	Total (dBm)	Limit (dBm)
64QAM	2626.3	1	0	2617.8~2616.8	-38.032	-37.886	-38.112	-38.550	-32.12	-13.00
				2616.8~2615.8	-41.166	-40.911	-40.948	-41.191	-35.03	-13.00
				2615.8~2614.8	-42.762	-42.548	-42.614	-42.831	-36.67	-13.00
				2614.8~2613.8	-44.031	-43.854	-44.030	-44.217	-38.01	-13.00
				2613.8~2612.8	-42.442	-42.488	-37.454	-38.301	-33.56	-13.00
	2626.3	75	0	2617.8~2616.8	-26.722	-27.320	-27.921	-30.167	-21.83	-13.00
				2616.8~2615.8	-26.920	-27.561	-28.405	-30.722	-22.16	-13.00
				2615.8~2614.8	-27.811	-28.282	-29.390	-31.761	-23.05	-13.00
				2614.8~2613.8	-28.508	-28.834	-29.935	-32.475	-23.67	-13.00
				2613.8~2612.8	-29.296	-29.641	-30.464	-33.189	-24.39	-13.00
	2682.5	1	74	2691~2692	-34.304	-33.374	-33.517	-33.536	-27.65	-13.00
				2692~2693	-38.263	-37.557	-37.574	-37.483	-31.69	-13.00
				2693~2694	-40.881	-40.393	-40.565	-40.347	-34.52	-13.00
				2694~2695	-42.821	-42.539	-42.747	-42.544	-36.64	-13.00
				2695~2696	-39.492	-38.840	-36.987	-36.570	-31.78	-13.00
	2682.5	75	0	2691~2692	-26.166	-24.283	-23.251	-24.698	-18.46	-13.00
				2692~2693	-25.868	-24.072	-22.978	-24.533	-18.22	-13.00
				2693~2694	-25.764	-24.322	-23.301	-24.476	-18.36	-13.00
				2694~2695	-27.151	-25.975	-24.529	-25.869	-19.76	-13.00
				2695~2696	-27.774	-26.636	-25.195	-26.476	-20.40	-13.00

Worst Plot of 64QAM, Low Channel



Worst Plot of 64QAM, High Channel



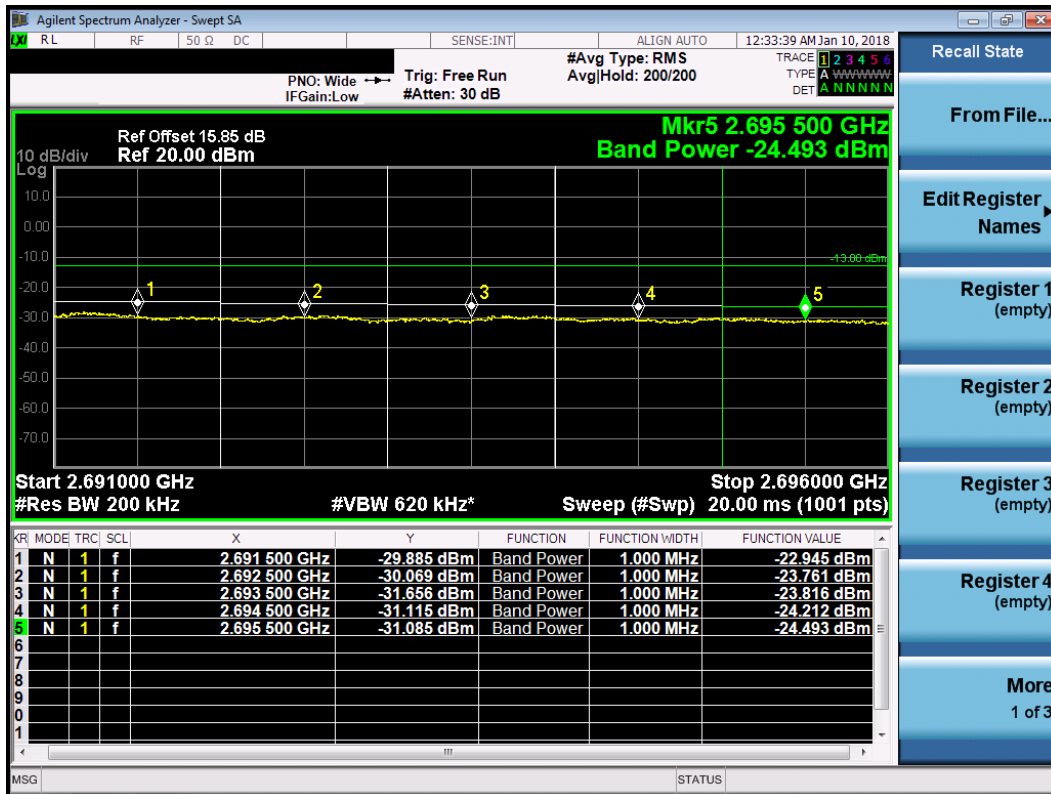
LTE Band 41, CB: 20MHz

Measured Channel Edge Result										
Modulation	Freq. (MHz)	RB Size	RB offset	Range (MHz)	ANT 0 (dBm)	ANT 1 (dBm)	ANT 2 (dBm)	ANT 3 (dBm)	Total (dBm)	Limit (dBm)
QPSK	2628.8	1	0	2617.8~2616.8	-34.759	-34.484	-35.471	-36.007	-29.12	-13.00
				2616.8~2615.8	-37.608	-37.293	-38.024	-38.385	-31.79	-13.00
				2615.8~2614.8	-40.532	-40.222	-40.946	-41.321	-34.71	-13.00
				2614.8~2613.8	-42.468	-42.132	-42.811	-43.164	-36.61	-13.00
				2613.8~2612.8	-43.681	-43.432	-44.076	-44.358	-37.85	-13.00
	2628.8	100	0	2617.8~2616.8	-25.725	-24.708	-24.986	-27.887	-19.64	-13.00
				2616.8~2615.8	-26.348	-25.238	-25.444	-28.261	-20.15	-13.00
				2615.8~2614.8	-27.060	-25.854	-26.078	-28.672	-20.76	-13.00
				2614.8~2613.8	-27.582	-26.562	-26.693	-29.109	-21.35	-13.00
				2613.8~2612.8	-28.344	-27.473	-27.647	-29.916	-22.22	-13.00
	2680.0	1	99	2691~2692	-33.405	-32.806	-33.668	-33.884	-27.40	-13.00
				2692~2693	-36.184	-35.627	-36.480	-36.560	-30.18	-13.00
				2693~2694	-38.955	-38.745	-39.327	-39.556	-33.11	-13.00
				2694~2695	-41.138	-40.970	-41.382	-41.635	-35.25	-13.00
				2695~2696	-42.644	-42.515	-42.944	-43.215	-36.80	-13.00
	2680.0	100	0	2691~2692	-25.971	-23.539	-22.945	-23.523	-17.83	-13.00
				2692~2693	-26.987	-24.591	-23.761	-24.633	-18.82	-13.00
				2693~2694	-26.970	-24.709	-23.816	-25.037	-18.97	-13.00
				2694~2695	-26.924	-25.244	-24.212	-25.375	-19.31	-13.00
				2695~2696	-27.207	-25.946	-24.493	-25.569	-19.68	-13.00

Worst Plot of QPSK, Low Channel

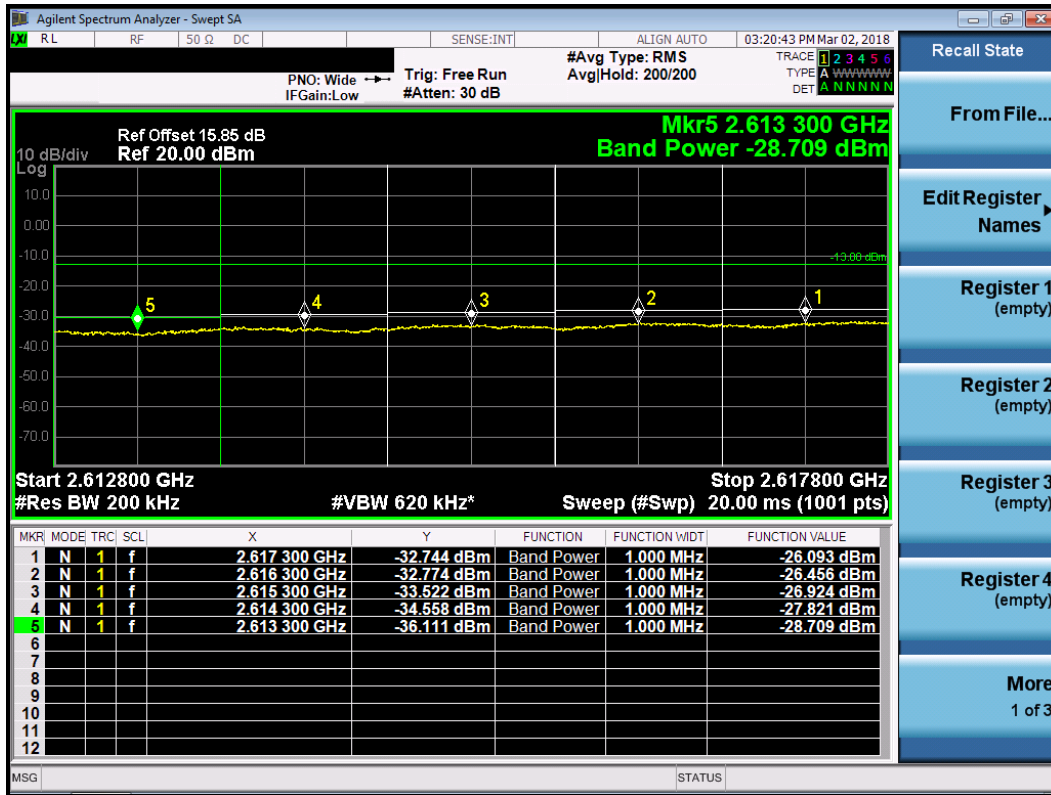


Worst Plot of QPSK, High Channel

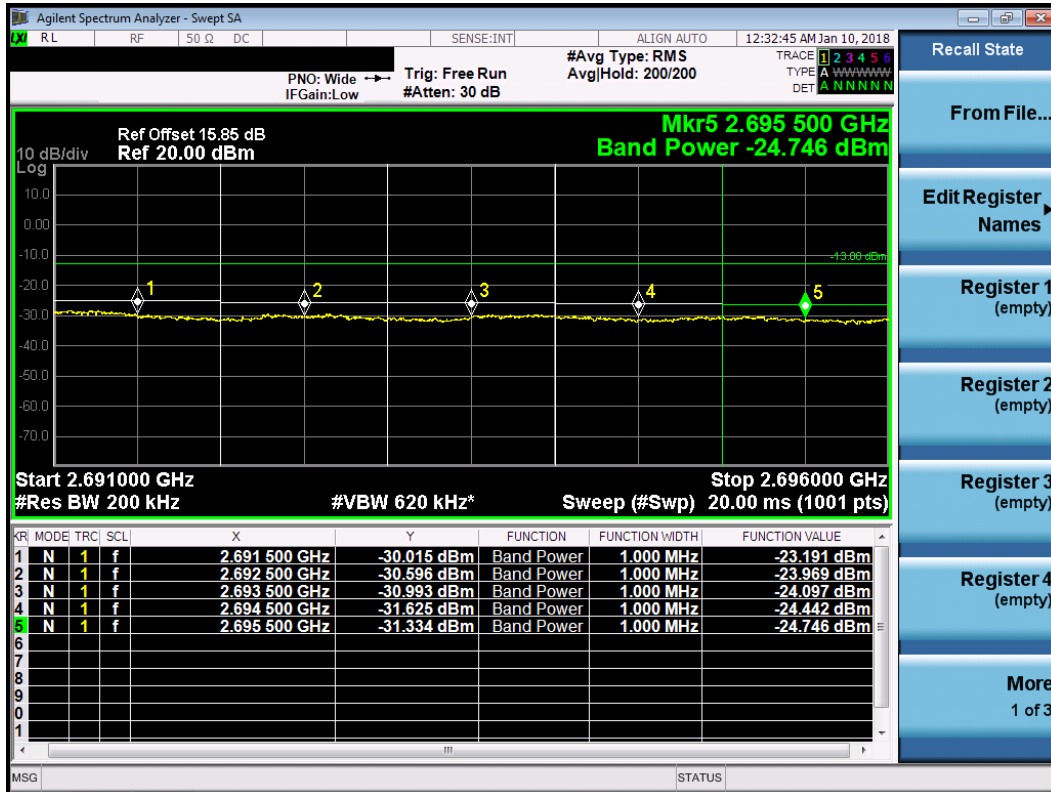


Measured Channel Edge Result										
Modulation	Freq. (MHz)	RB Size	RB offset	Range (MHz)	ANT 0 (dBm)	ANT 1 (dBm)	ANT 2 (dBm)	ANT 3 (dBm)	Total (dBm)	Limit (dBm)
16QAM	2628.8	1	0	2617.8~2616.8	-35.571	-35.168	-35.842	-36.336	-29.69	-13.00
				2616.8~2615.8	-38.410	-37.878	-38.306	-38.799	-32.32	-13.00
				2615.8~2614.8	-41.326	-40.844	-41.401	-41.753	-35.30	-13.00
				2614.8~2613.8	-43.040	-42.578	-43.093	-43.423	-37.00	-13.00
				2613.8~2612.8	-44.155	-43.851	-44.322	-44.519	-38.18	-13.00
	2628.8	100	0	2617.8~2616.8	-27.339	-26.093	-27.170	-29.780	-21.38	-13.00
				2616.8~2615.8	-27.729	-26.456	-27.476	-30.124	-21.73	-13.00
				2615.8~2614.8	-28.124	-26.924	-27.866	-30.601	-22.16	-13.00
				2614.8~2613.8	-28.721	-27.821	-28.531	-31.202	-22.88	-13.00
				2613.8~2612.8	-29.619	-28.709	-29.733	-31.936	-23.83	-13.00
	2680.0	1	99	2691~2692	-34.508	-33.922	-34.713	-34.942	-28.48	-13.00
				2692~2693	-37.136	-36.628	-37.466	-37.469	-31.14	-13.00
				2693~2694	-39.841	-39.582	-40.212	-40.284	-33.95	-13.00
				2694~2695	-41.756	-41.722	-42.091	-42.170	-35.91	-13.00
				2695~2696	-43.146	-43.129	-43.528	-43.565	-37.32	-13.00
	2680.0	100	0	2691~2692	-26.172	-23.885	-23.191	-24.716	-18.33	-13.00
				2692~2693	-26.586	-24.551	-23.969	-25.271	-18.97	-13.00
				2693~2694	-26.653	-24.879	-24.097	-25.542	-19.17	-13.00
				2694~2695	-26.976	-25.296	-24.442	-25.753	-19.50	-13.00
				2695~2696	-27.450	-25.713	-24.746	-26.023	-19.86	-13.00

Worst Plot of 16QAM, Low Channel

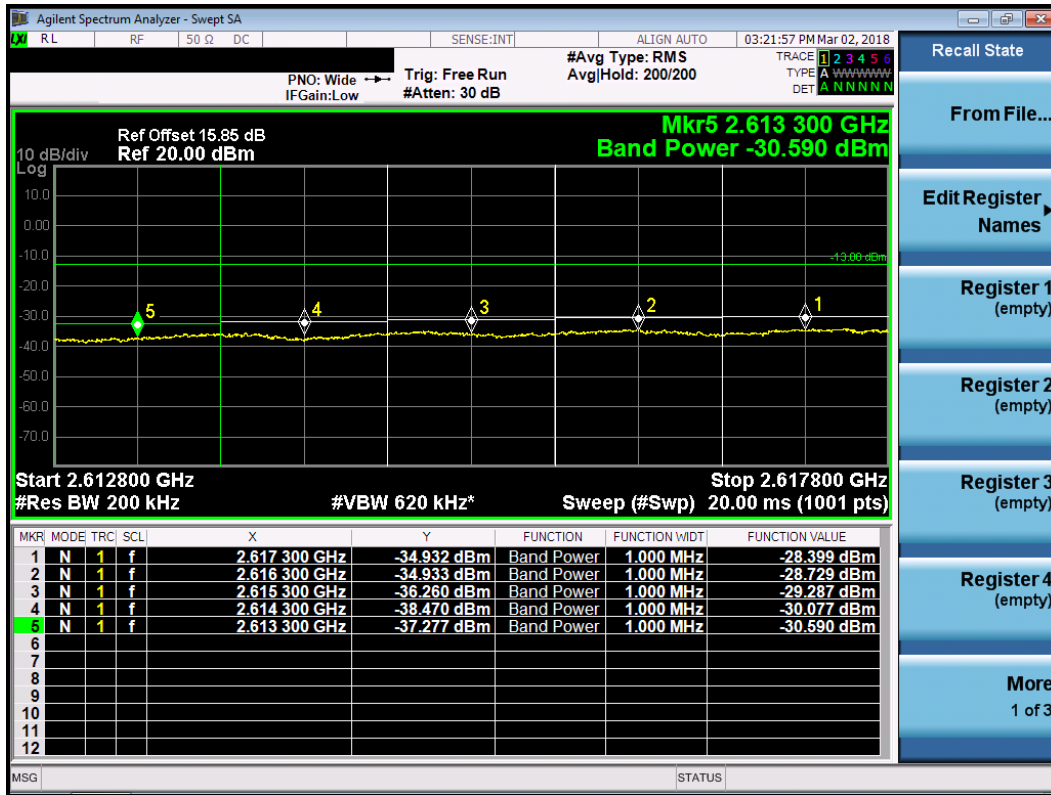


Worst Plot of 16QAM, High Channel

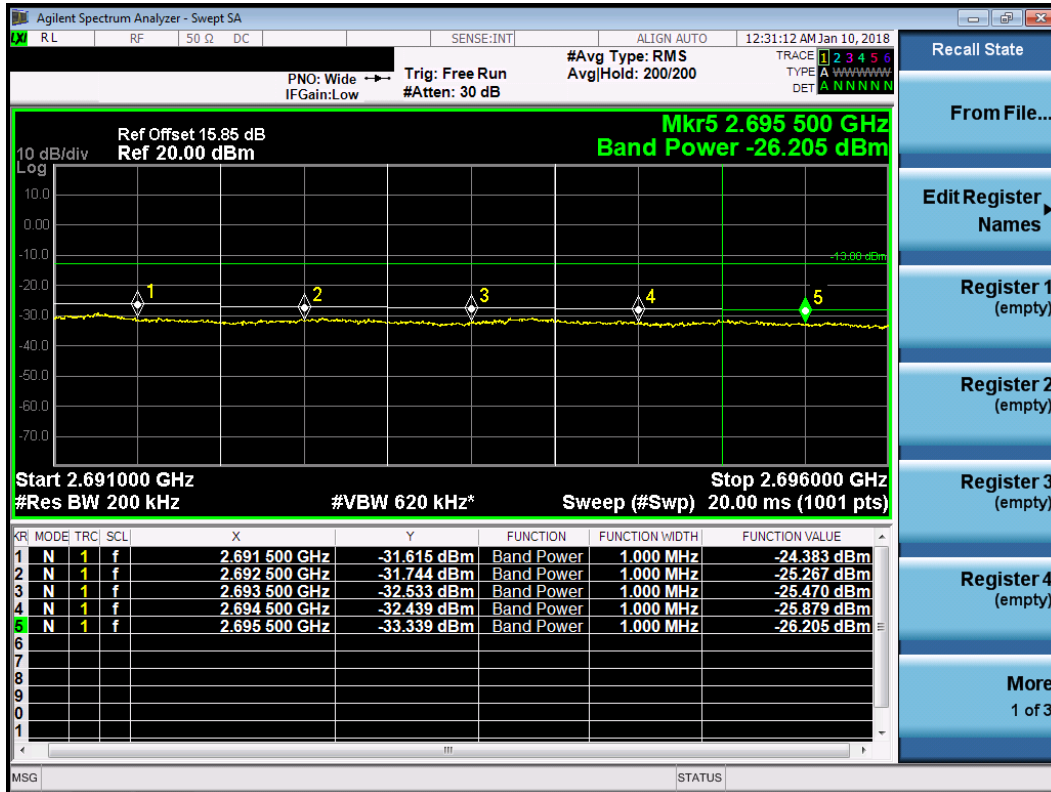


Measured Channel Edge Result										
Modulation	Freq. (MHz)	RB Size	RB offset	Range (MHz)	ANT 0 (dBm)	ANT 1 (dBm)	ANT 2 (dBm)	ANT 3 (dBm)	Total (dBm)	Limit (dBm)
64QAM	2628.8	1	0	2617.8~2616.8	-39.286	-38.875	-39.734	-39.905	-33.41	-13.00
				2616.8~2615.8	-40.825	-40.289	-40.936	-41.236	-34.79	-13.00
				2615.8~2614.8	-43.013	-42.720	-43.307	-43.459	-37.09	-13.00
				2614.8~2613.8	-44.148	-43.830	-44.298	-44.510	-38.17	-13.00
				2613.8~2612.8	-44.795	-44.566	-45.019	-45.136	-38.85	-13.00
	2628.8	100	0	2617.8~2616.8	-29.355	-28.399	-31.084	-32.979	-24.10	-13.00
				2616.8~2615.8	-29.466	-28.729	-31.034	-33.395	-24.30	-13.00
				2615.8~2614.8	-29.941	-29.287	-31.336	-33.755	-24.75	-13.00
				2614.8~2613.8	-30.677	-30.077	-32.115	-34.498	-25.52	-13.00
				2613.8~2612.8	-31.235	-30.590	-32.881	-35.293	-26.13	-13.00
	2680.0	1	99	2691~2692	-35.122	-34.586	-35.660	-35.757	-29.24	-13.00
				2692~2693	-37.798	-37.290	-38.160	-38.202	-31.83	-13.00
				2693~2694	-40.403	-40.210	-40.834	-41.018	-34.58	-13.00
				2694~2695	-42.165	-42.074	-42.471	-42.734	-36.33	-13.00
				2695~2696	-43.481	-43.366	-43.767	-44.040	-37.64	-13.00
	2680.0	100	0	2691~2692	-26.872	-25.060	-24.383	-26.406	-19.54	-13.00
				2692~2693	-27.268	-25.666	-25.267	-27.146	-20.23	-13.00
				2693~2694	-27.342	-25.972	-25.470	-27.580	-20.48	-13.00
				2694~2695	-27.805	-26.364	-25.879	-27.812	-20.86	-13.00
				2695~2696	-28.354	-26.865	-26.205	-27.948	-21.24	-13.00

Worst Plot of 64QAM, Low Channel

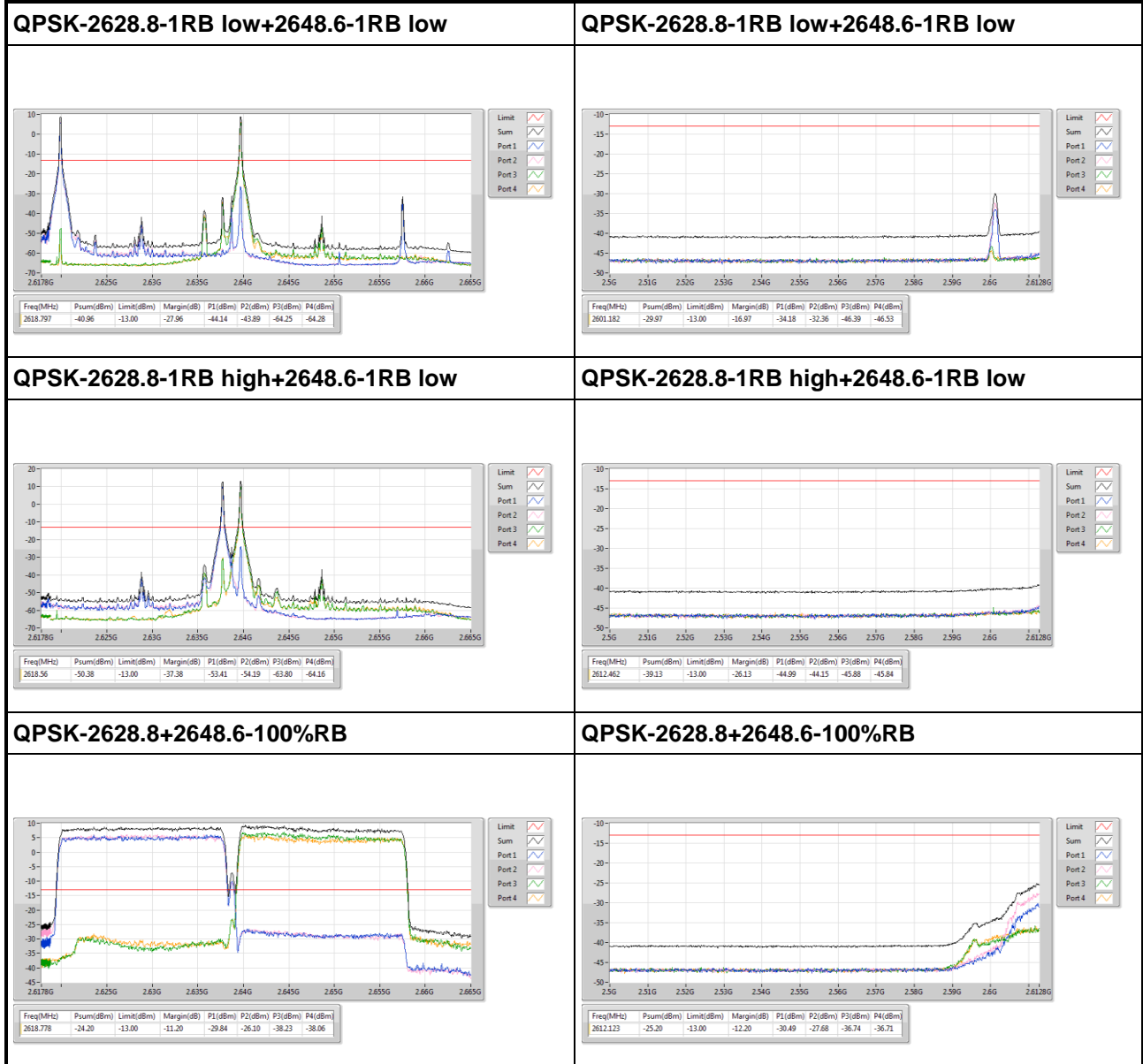


Worst Plot of 64QAM, High Channel

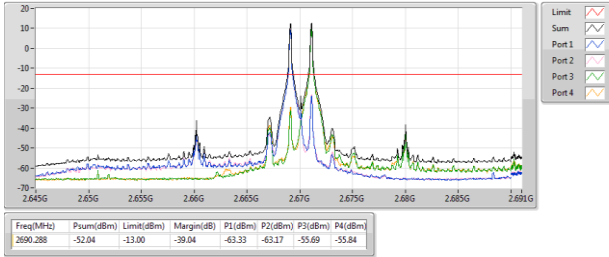


3.4.6 Test Result of Channel Edge_CA mode

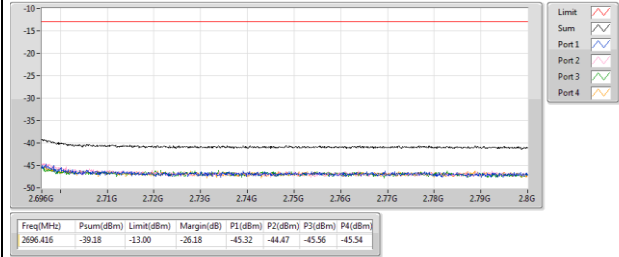
LTE Band 41, CB: 20MHz+20MHz



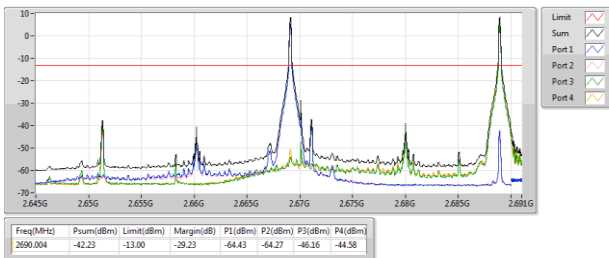
QPSK-2660.2-1RB high+2680-1RB low



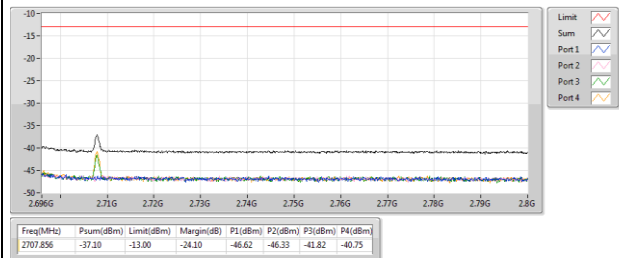
QPSK-2660.2-1RB high+2680-1RB low



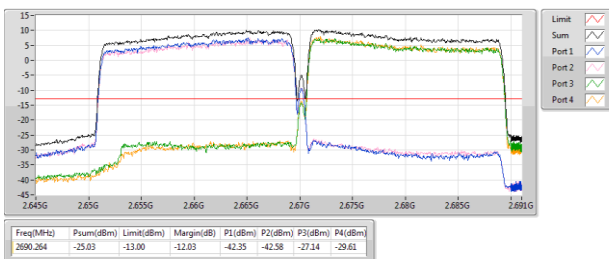
QPSK-2660.2-1RB high+2680-1RB high



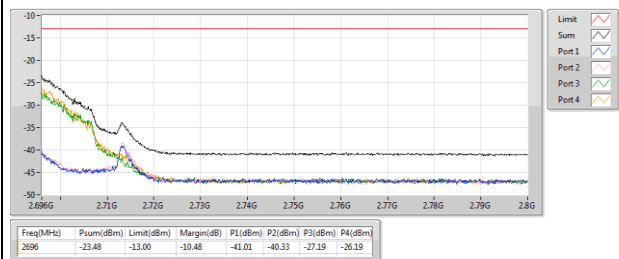
QPSK-2660.2-1RB high+2680-1RB high



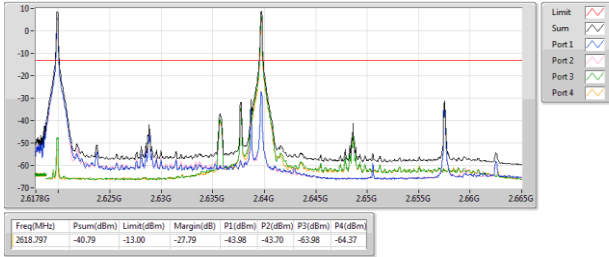
QPSK-2660.2+2680-100%RB



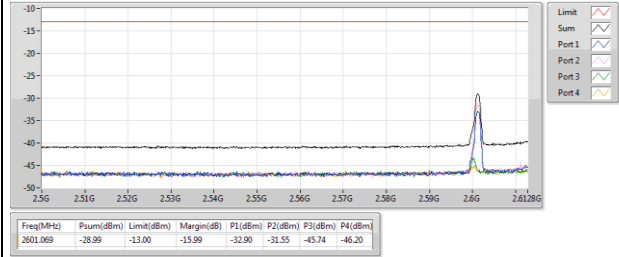
QPSK-2660.2+2680-100%RB



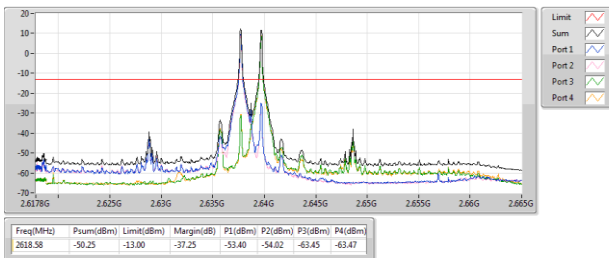
16QAM-2628.8-1RB low+2648.6-1RB low



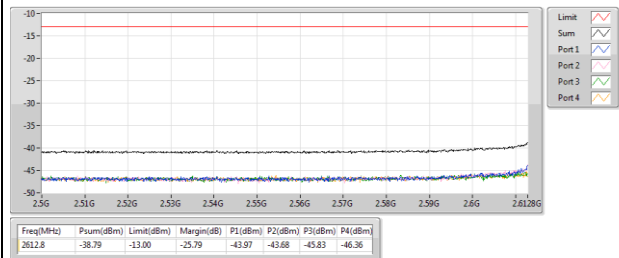
16QAM-2628.8-1RB low+2648.6-1RB low



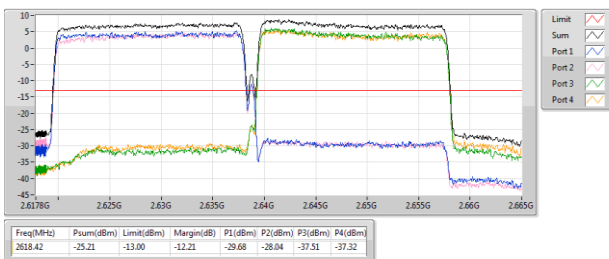
16QAM-2628.8-1RB high+2648.6-1RB low



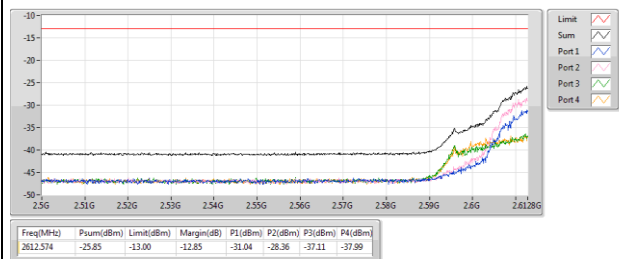
16QAM-2628.8-1RB high+2648.6-1RB low

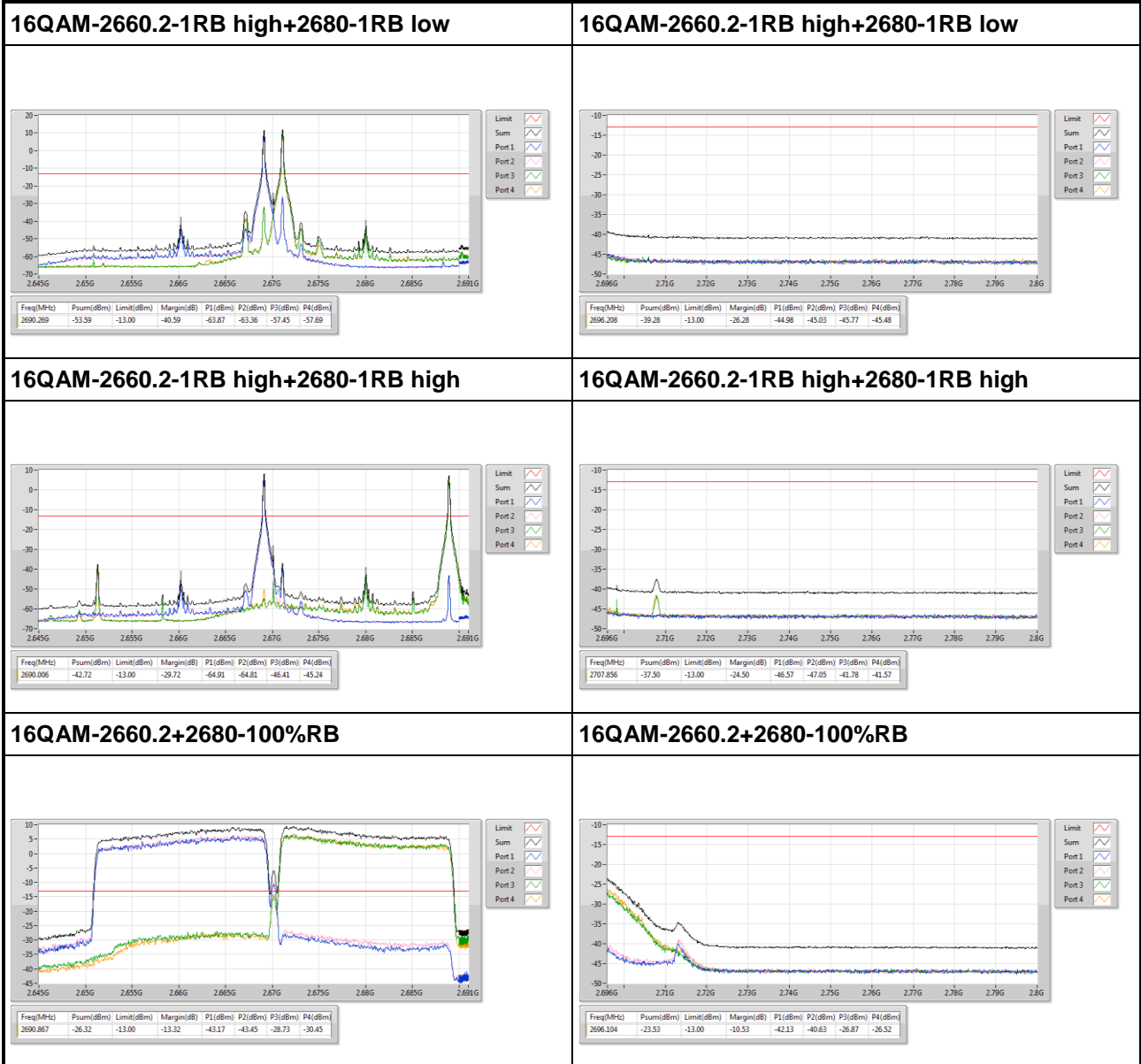


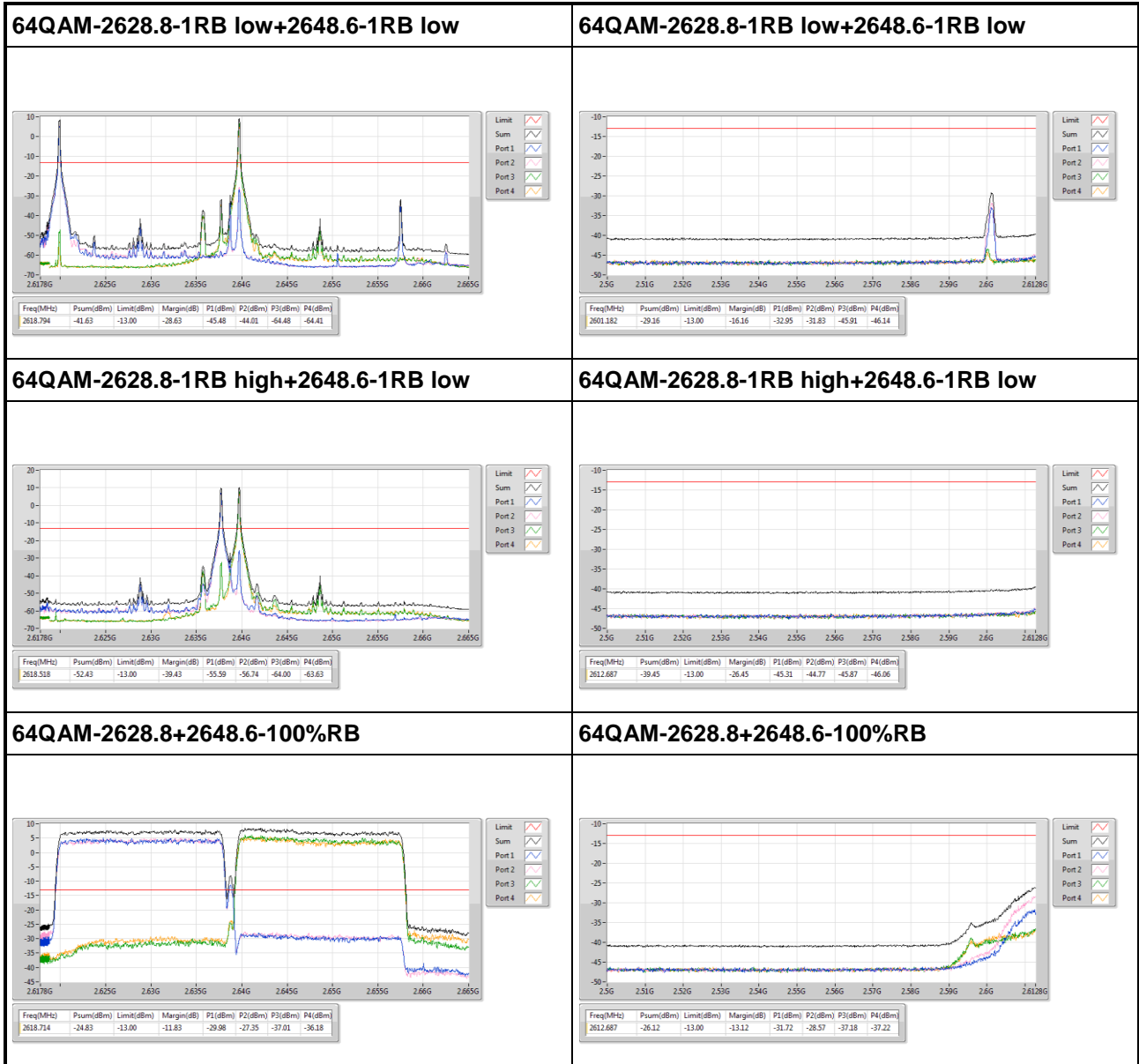
16QAM-2628.8+2648.6-100%RB

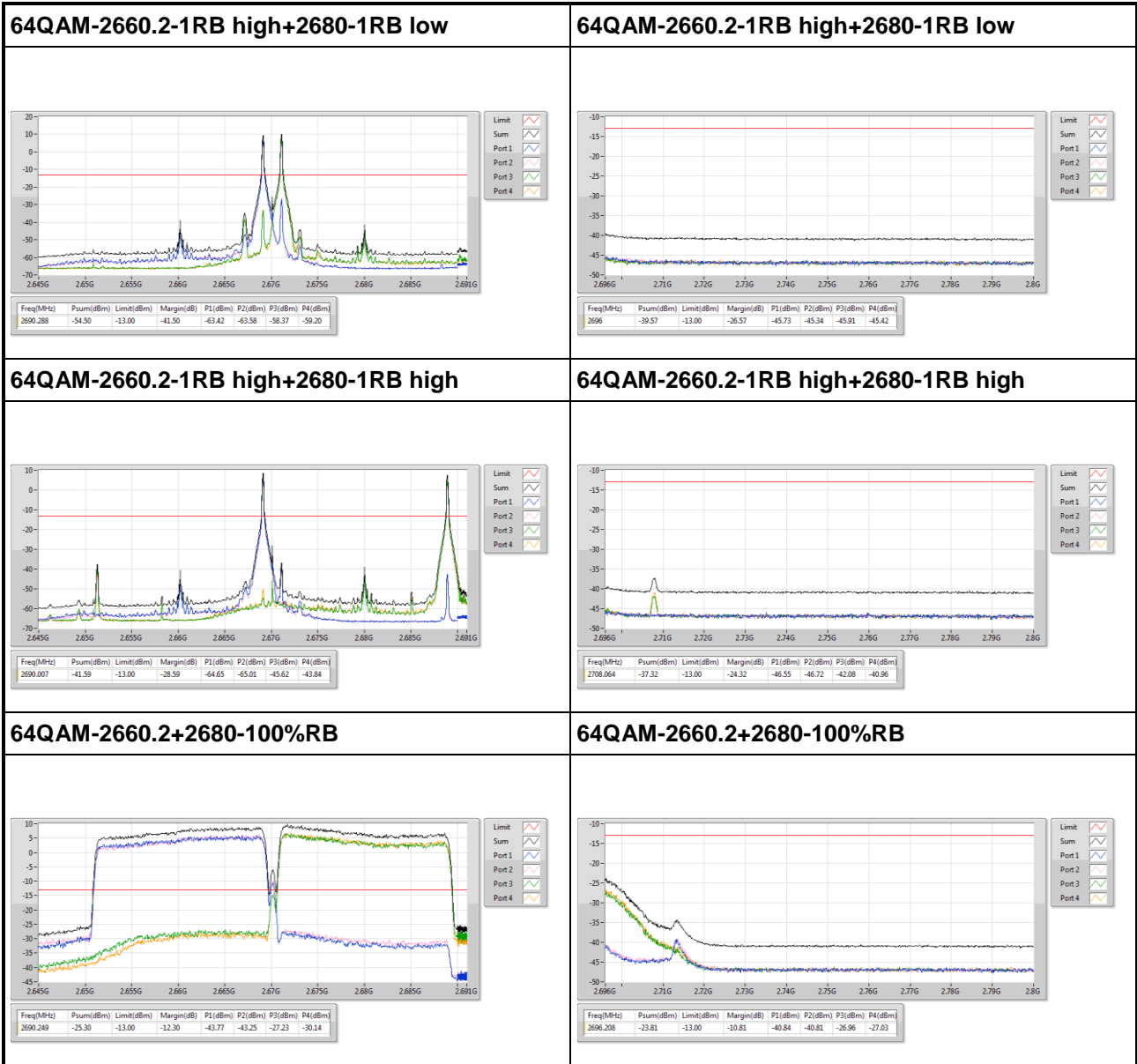


16QAM-2628.8+2648.6-100%RB







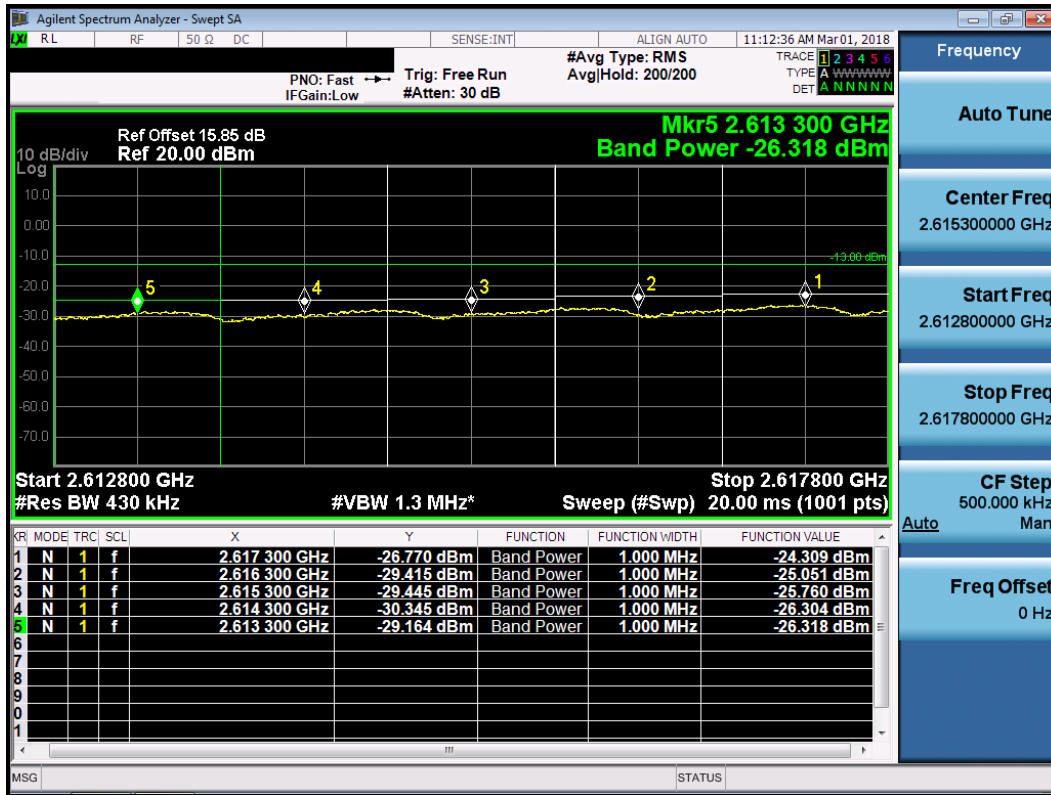


3.4.7 Measured Channel Edge Result_CA mode

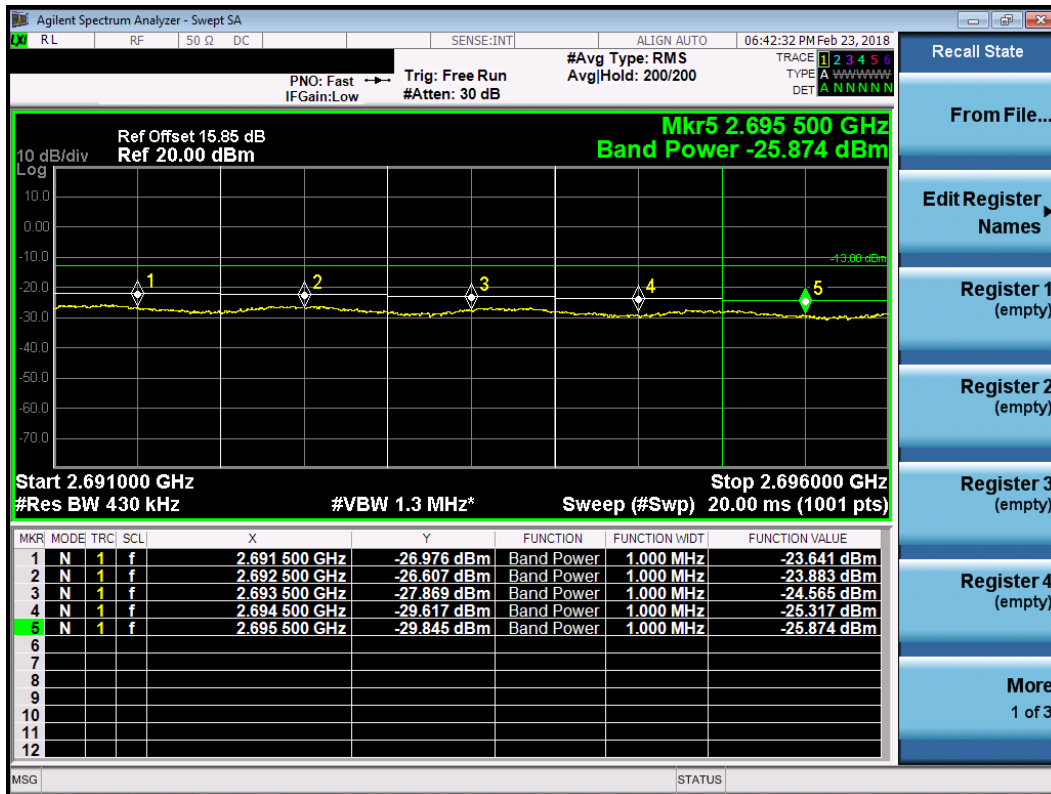
LTE Band 41, CB: 20MHz+20MHz, QPSK

Measured Channel Edge Result												
PCC Freq. (MHz)	SCC Freq. (MHz)	PCC RB		SCC RB		Range (MHz)	ANT0 (dBm)	ANT1 (dBm)	ANT2 (dBm)	ANT3 (dBm)	Total (dBm)	Limit (dBm)
		size	offset	size	offset							
2628.8	2648.6	1	0	1	0	2617.8~2616.8	-38.169	-38.125	-44.750	-44.793	-34.28	-13
						2616.8~2615.8	-38.151	-37.975	-44.759	-44.844	-34.22	-13
						2615.8~2614.8	-41.698	-41.582	-44.792	-44.872	-36.93	-13
						2614.8~2613.8	-42.986	-42.809	-44.881	-44.979	-37.77	-13
						2613.8~2612.8	-43.856	-43.621	-44.924	-45.041	-38.29	-13
2628.8	2648.6	1	99	1	0	2617.8~2616.8	-37.657	-37.904	-43.864	-44.011	-33.83	-13
						2616.8~2615.8	-38.647	-38.965	-43.975	-44.032	-34.65	-13
						2615.8~2614.8	-40.146	-40.288	-43.940	-44.182	-35.71	-13
						2614.8~2613.8	-41.178	-41.376	-44.097	-44.293	-36.47	-13
						2613.8~2612.8	-42.434	-42.435	-44.278	-44.430	-37.27	-13
2628.8	2648.6	100	0	100	0	2617.8~2616.8	-27.676	-24.309	-34.632	-34.376	-22.13	-13
						2616.8~2615.8	-27.732	-25.051	-35.043	-34.828	-22.63	-13
						2615.8~2614.8	-28.001	-25.760	-35.271	-35.201	-23.15	-13
						2614.8~2613.8	-28.855	-26.304	-35.393	-35.622	-23.76	-13
						2613.8~2612.8	-29.606	-26.318	-35.309	-35.891	-24.00	-13
2660.2	2680	1	99	1	99	2691~2692	-44.662	-44.675	-39.176	-38.880	-34.97	-13
						2692~2693	-44.595	-44.653	-38.127	-37.789	-34.10	-13
						2693~2694	-44.675	-44.664	-42.005	-41.634	-36.99	-13
						2694~2695	-44.798	-44.802	-43.221	-42.927	-37.83	-13
						2695~2696	-44.895	-44.875	-44.155	-43.877	-38.41	-13
2660.2	2680	1	99	1	0	2691~2692	-40.209	-42.916	-40.561	-40.223	-34.82	-13
						2692~2693	-40.782	-42.704	-41.120	-40.727	-35.24	-13
						2693~2694	-41.862	-42.908	-42.257	-41.853	-36.18	-13
						2694~2695	-42.745	-43.137	-43.174	-42.781	-36.93	-13
						2695~2696	-43.922	-43.424	-44.199	-43.922	-37.84	-13
2660.2	2680	100	0	100	0	2691~2692	-38.503	-37.939	-23.641	-24.920	-21.05	-13
						2692~2693	-38.118	-37.890	-23.883	-24.855	-21.15	-13
						2693~2694	-38.349	-37.937	-24.565	-25.219	-21.67	-13
						2694~2695	-38.741	-37.750	-25.317	-25.699	-22.27	-13
						2695~2696	-39.645	-38.663	-25.874	-26.201	-22.82	-13

Worst Plot of QPSK, Low Channel



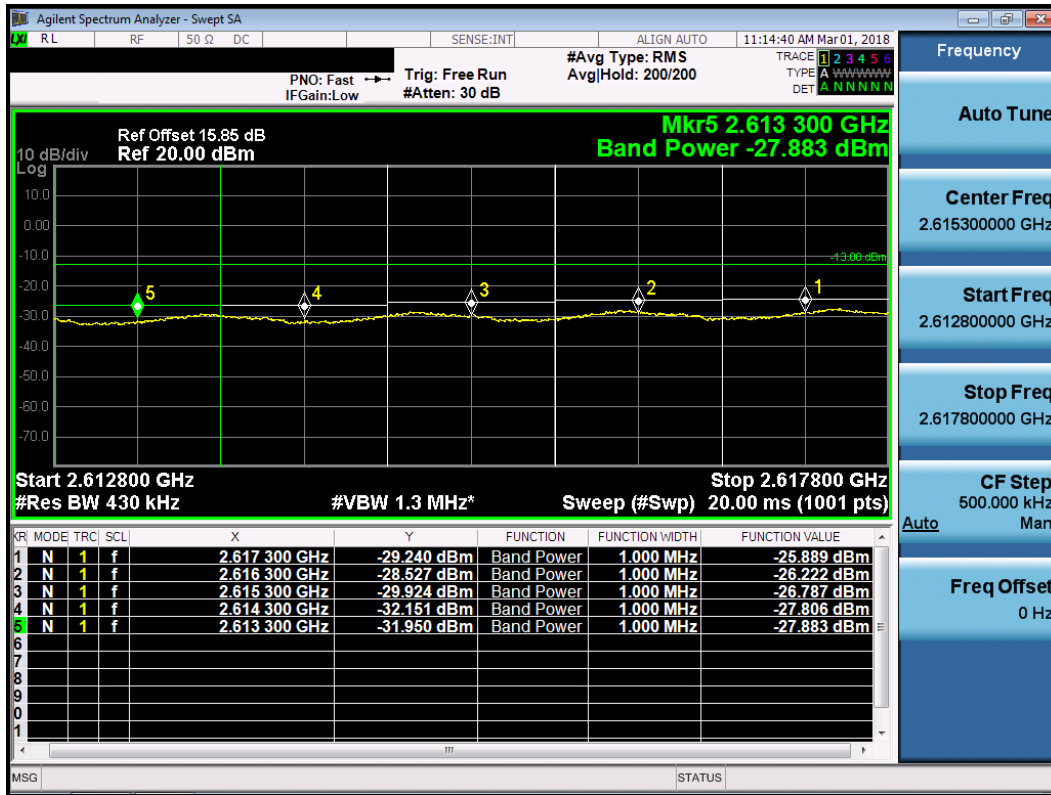
Worst Plot of QPSK, High Channel



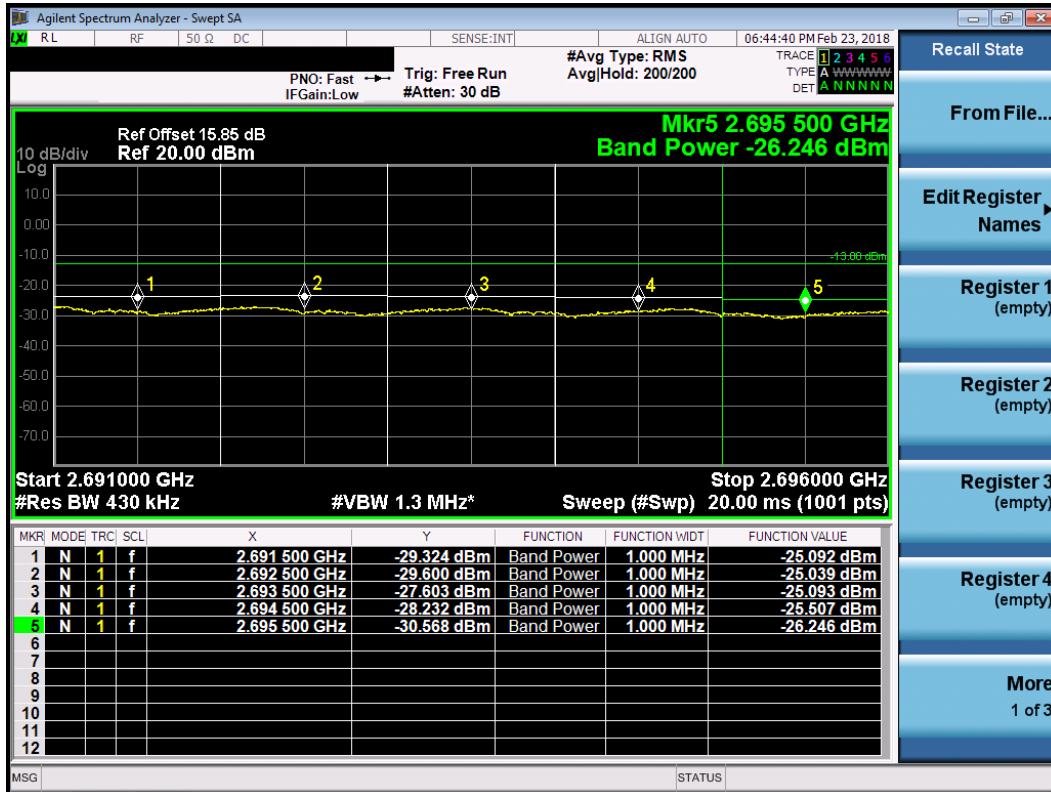
LTE Band 41, CB: 20MHz+20MHz, 16QAM

Measured Channel Edge Result												
PCC Freq. (MHz)	SCC Freq. (MHz)	PCC RB		SCC RB		Range (MHz)	ANT0 (dBm)	ANT1 (dBm)	ANT2 (dBm)	ANT3 (dBm)	Total (dBm)	Limit (dBm)
		size	offset	size	offset							
2628.8	2648.6	1	0	1	0	2617.8~2616.8	-38.251	-38.180	-44.800	-44.817	-34.34	-13
						2616.8~2615.8	-38.048	-37.973	-44.797	-44.824	-34.18	-13
						2615.8~2614.8	-41.622	-41.533	-44.812	-44.854	-36.89	-13
						2614.8~2613.8	-42.895	-42.795	-44.922	-44.972	-37.75	-13
						2613.8~2612.8	-43.824	-43.722	-44.958	-45.009	-38.32	-13
2628.8	2648.6	1	99	1	0	2617.8~2616.8	-38.326	-38.656	-44.182	-44.227	-34.45	-13
						2616.8~2615.8	-39.143	-39.476	-44.146	-44.320	-35.08	-13
						2615.8~2614.8	-40.651	-40.763	-44.261	-44.409	-36.13	-13
						2614.8~2613.8	-41.529	-41.700	-44.373	-44.515	-36.78	-13
						2613.8~2612.8	-42.774	-42.801	-44.471	-44.662	-37.57	-13
2628.8	2648.6	100	0	100	0	2617.8~2616.8	-28.635	-25.889	-33.270	-33.638	-23.14	-13
						2616.8~2615.8	-29.035	-26.222	-33.789	-33.965	-23.51	-13
						2615.8~2614.8	-29.362	-26.787	-34.210	-34.316	-23.98	-13
						2614.8~2613.8	-29.900	-27.806	-34.655	-35.001	-24.76	-13
						2613.8~2612.8	-30.189	-27.883	-34.838	-35.692	-24.97	-13
2660.2	2680	1	99	1	99	2691~2692	-44.700	-44.676	-39.564	-39.229	-35.26	-13
						2692~2693	-44.583	-44.591	-38.343	-37.910	-34.23	-13
						2693~2694	-44.623	-44.672	-42.027	-41.683	-37.01	-13
						2694~2695	-44.763	-44.770	-43.298	-43.002	-37.86	-13
						2695~2696	-44.861	-44.842	-44.189	-43.914	-38.41	-13
2660.2	2680	1	99	1	0	2691~2692	-43.497	-43.451	-41.146	-40.893	-36.05	-13
						2692~2693	-43.396	-43.262	-41.572	-41.337	-36.27	-13
						2693~2694	-43.541	-43.424	-42.601	-42.322	-36.92	-13
						2694~2695	-43.835	-43.636	-43.391	-43.116	-37.47	-13
						2695~2696	-43.996	-43.886	-44.315	-44.101	-38.05	-13
2660.2	2680	100	0	100	0	2691~2692	-38.853	-38.349	-25.092	-25.253	-21.97	-13
						2692~2693	-38.951	-38.436	-25.039	-25.467	-22.04	-13
						2693~2694	-38.807	-38.401	-25.093	-25.731	-22.19	-13
						2694~2695	-38.867	-38.618	-25.507	-25.800	-22.43	-13
						2695~2696	-39.679	-39.282	-26.246	-25.728	-22.78	-13

Worst Plot of 16QAM, Low Channel



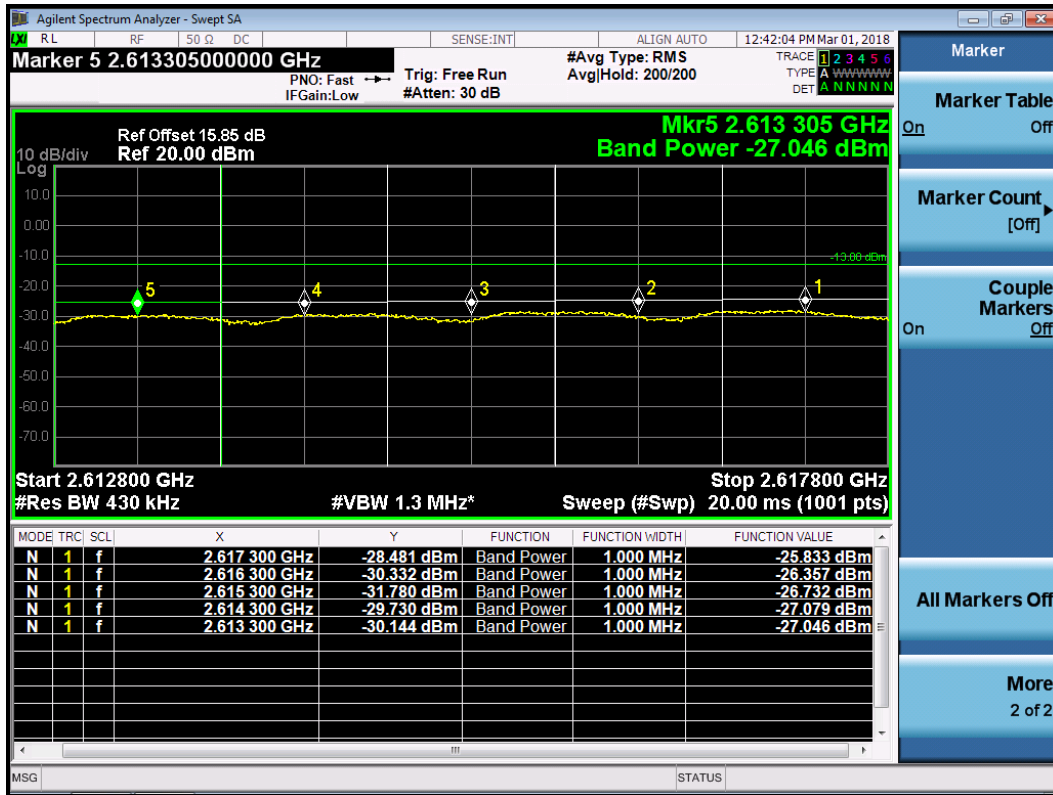
Worst Plot of 16QAM, High Channel



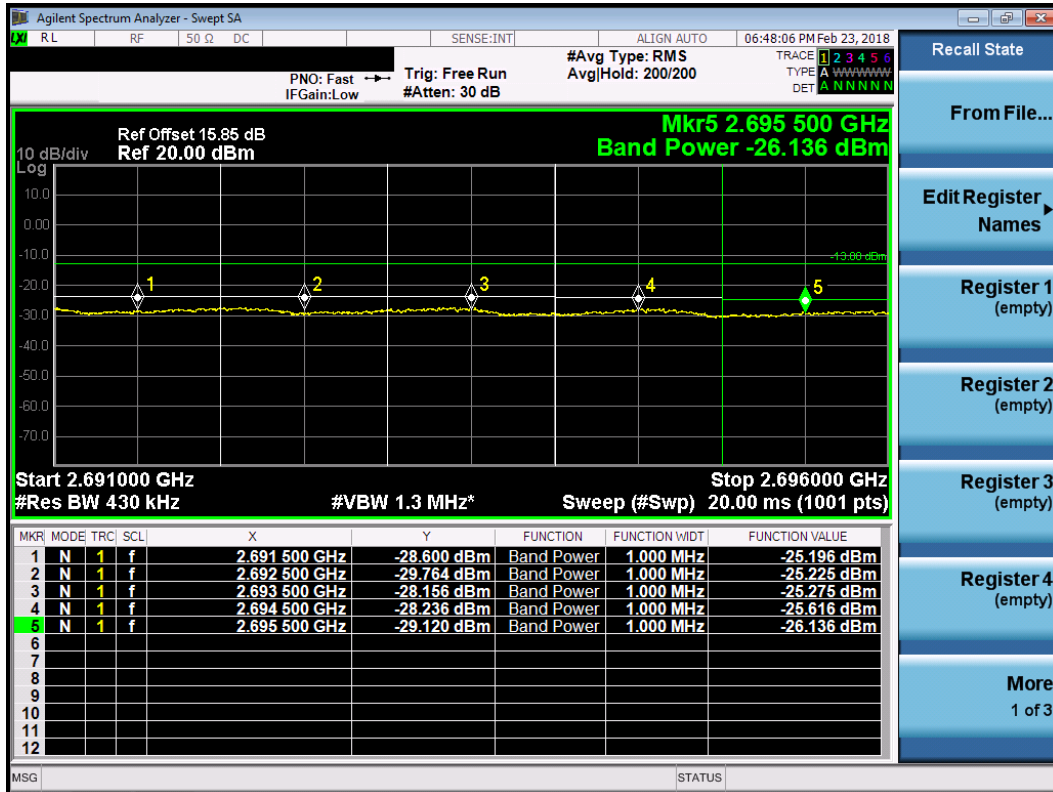
LTE Band 41, CB: 20MHz+20MHz, 64QAM

Measured Channel Edge Result												
PCC Freq. (MHz)	SCC Freq. (MHz)	PCC RB		SCC RB		Range (MHz)	ANT0 (dBm)	ANT1 (dBm)	ANT2 (dBm)	ANT3 (dBm)	Total (dBm)	Limit (dBm)
		size	offset	size	offset							
2628.8	2648.6	1	0	1	0	2617.8~2616.8	-38.287	-38.350	-44.765	-44.821	-34.43	-13
						2616.8~2615.8	-38.051	-37.965	-44.725	-44.847	-34.17	-13
						2615.8~2614.8	-41.719	-41.610	-44.804	-44.880	-36.95	-13
						2614.8~2613.8	-42.969	-42.846	-44.831	-44.995	-37.77	-13
						2613.8~2612.8	-43.820	-43.710	-44.934	-45.038	-38.31	-13
2628.8	2648.6	1	99	1	0	2617.8~2616.8	-39.905	-40.273	-44.451	-44.576	-35.74	-13
						2616.8~2615.8	-40.727	-40.973	-44.470	-44.638	-36.30	-13
						2615.8~2614.8	-41.899	-42.206	-44.534	-44.673	-37.12	-13
						2614.8~2613.8	-42.618	-42.752	-44.592	-44.712	-37.54	-13
						2613.8~2612.8	-43.611	-43.703	-44.707	-44.869	-38.16	-13
2628.8	2648.6	100	0	100	0	2617.8~2616.8	-28.746	-25.833	-33.228	-33.461	-23.12	-13
						2616.8~2615.8	-28.775	-26.357	-33.877	-33.859	-23.51	-13
						2615.8~2614.8	-29.022	-26.732	-34.269	-34.426	-23.86	-13
						2614.8~2613.8	-29.613	-27.079	-34.659	-35.166	-24.32	-13
						2613.8~2612.8	-30.028	-27.046	-34.854	-35.693	-24.48	-13
2660.2	2680	1	99	1	99	2691~2692	-44.722	-44.735	-39.716	-39.516	-35.44	-13
						2692~2693	-44.545	-44.623	-38.289	-37.717	-34.12	-13
						2693~2694	-44.633	-44.642	-41.956	-41.646	-36.97	-13
						2694~2695	-44.756	-44.789	-43.256	-43.072	-37.87	-13
						2695~2696	-44.872	-44.826	-44.110	-43.936	-38.40	-13
2660.2	2680	1	99	1	0	2691~2692	-44.164	-44.144	-42.107	-42.140	-37.00	-13
						2692~2693	-43.984	-43.941	-42.496	-42.528	-37.16	-13
						2693~2694	-44.131	-44.039	-43.297	-43.377	-37.67	-13
						2694~2695	-44.335	-44.160	-43.923	-43.829	-38.04	-13
						2695~2696	-44.440	-44.312	-44.635	-44.667	-38.49	-13
2660.2	2680	100	0	100	0	2691~2692	-38.939	-38.240	-25.196	-27.112	-22.80	-13
						2692~2693	-38.838	-38.195	-25.225	-27.165	-22.84	-13
						2693~2694	-38.708	-38.500	-25.275	-26.991	-22.80	-13
						2694~2695	-38.943	-38.573	-25.616	-26.907	-22.97	-13
						2695~2696	-39.724	-39.002	-26.136	-27.112	-23.36	-13

Worst Plot of 64QAM, Low Channel



Worst Plot of 64QAM, High Channel



3.5 Emission and Occupied Bandwidth

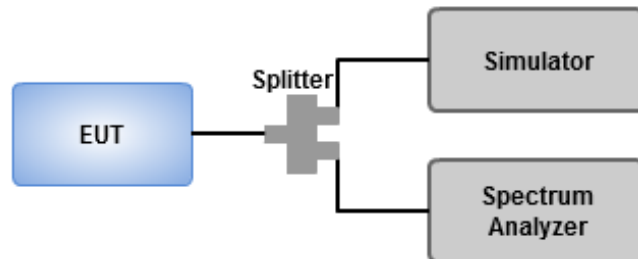
3.5.1 Test Procedures

1. Set as below setting for LTE mode

Bandwidth (MHz)	RBW (kHz)	VBW (KHz)	Detector	Sweep time
5	56	180	Peak	Auto
10	100	300	Peak	Auto
15	150	470	Peak	Auto
20	200	620	Peak	Auto

2. Set Detector = Peak, Trace mode = max hold, Sweep = auto couple, Allow the trace to stabilize.
3. Using 26dB and occupied bandwidth measurement function of spectrum analyzer to measure bandwidth.

3.5.2 Test Setup

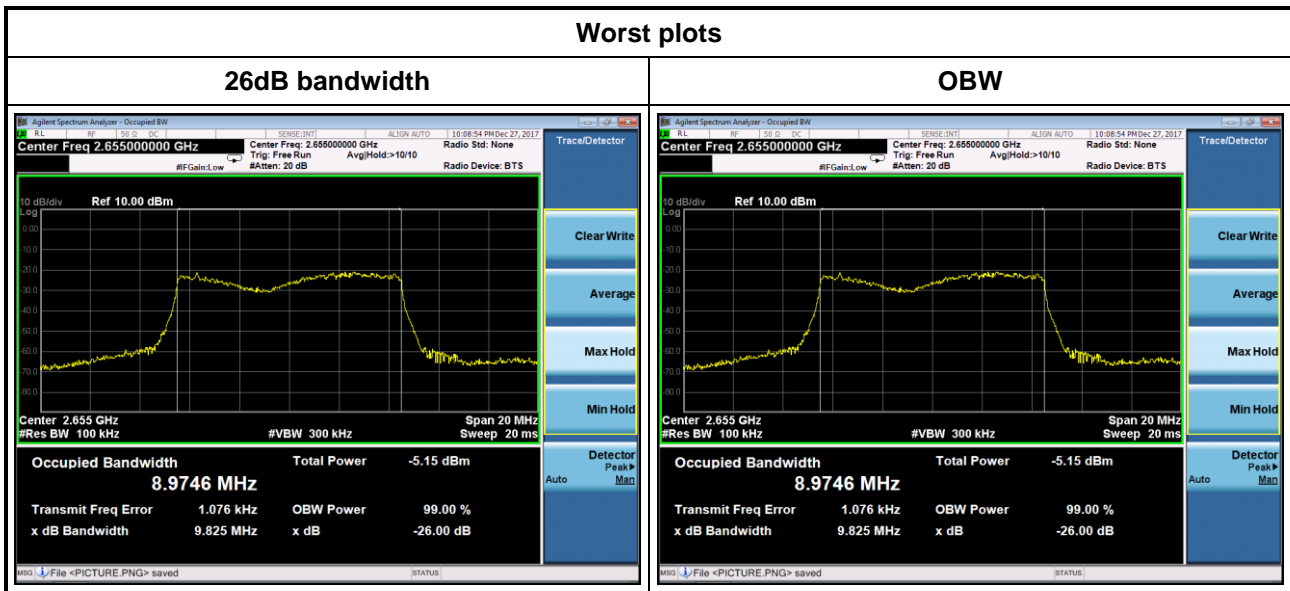


3.5.3 Test Result of Occupied Bandwidth_CDD mode

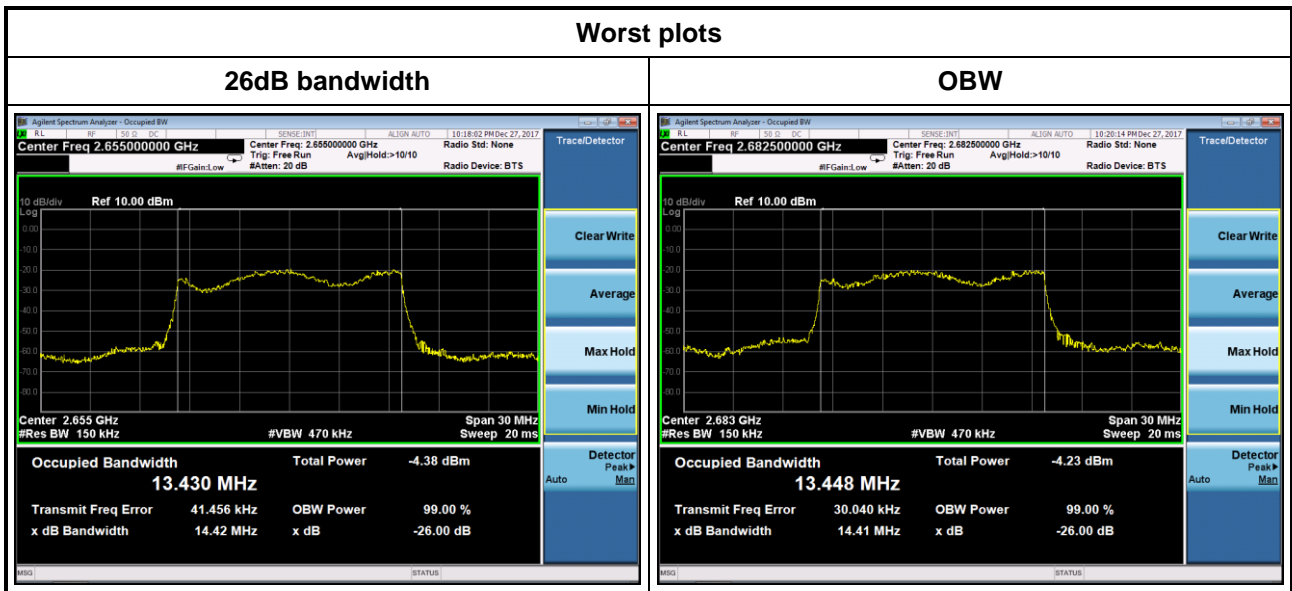
Channel Bandwidth (MHz)	Modulation	Frequency (MHz)	26dB BW (MHz)	99% OBW (MHz)
5	QPSK	2621.3	5.0360	4.4346
5	QPSK	2655.0	4.9710	4.4345
5	QPSK	2687.5	5.0070	4.4448
5	16QAM	2621.3	4.9580	4.4401
5	16QAM	2655.0	4.9230	4.4005
5	16QAM	2687.5	5.0510	4.4523
5	64QAM	2621.3	4.9700	4.4503
5	64QAM	2655.0	4.9080	4.3887
5	64QAM	2687.5	5.0040	4.4668



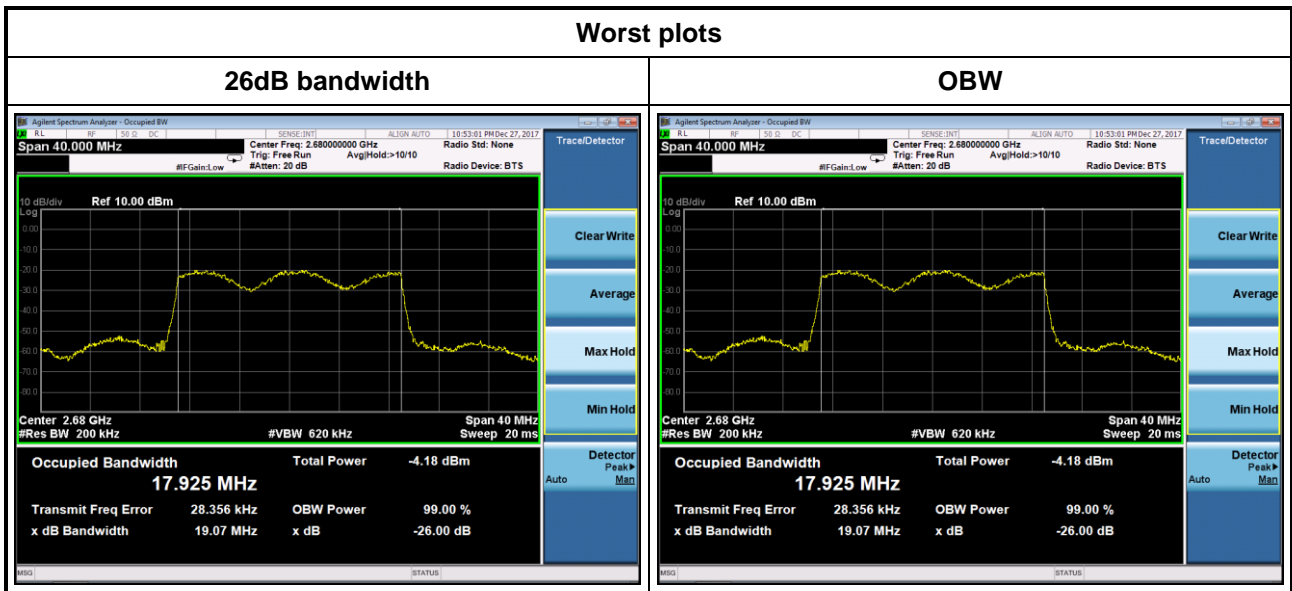
Channel Bandwidth (MHz)	Modulation	Frequency (MHz)	26dB BW (MHz)	99% OBW (MHz)
10	QPSK	2623.8	9.4130	8.7995
10	QPSK	2655.0	9.7130	8.9571
10	QPSK	2685.0	9.6690	8.9356
10	16QAM	2623.8	9.4760	8.8546
10	16QAM	2655.0	9.6970	8.9559
10	16QAM	2685.0	9.5860	8.9268
10	64QAM	2623.8	9.6450	8.8802
10	64QAM	2655.0	9.8250	8.9746
10	64QAM	2685.0	9.7970	8.9322



Channel Bandwidth (MHz)	Modulation	Frequency (MHz)	26dB BW (MHz)	99% OBW (MHz)
15	QPSK	2626.3	14.2400	13.4000
15	QPSK	2655.0	14.3700	13.4380
15	QPSK	2682.5	14.4100	13.4480
15	16QAM	2626.3	14.3400	13.3730
15	16QAM	2655.0	14.4200	13.4300
15	16QAM	2682.5	14.3700	13.4340
15	64QAM	2626.3	14.3300	13.3430
15	64QAM	2655.0	14.3000	13.4200
15	64QAM	2682.5	14.4100	13.4280

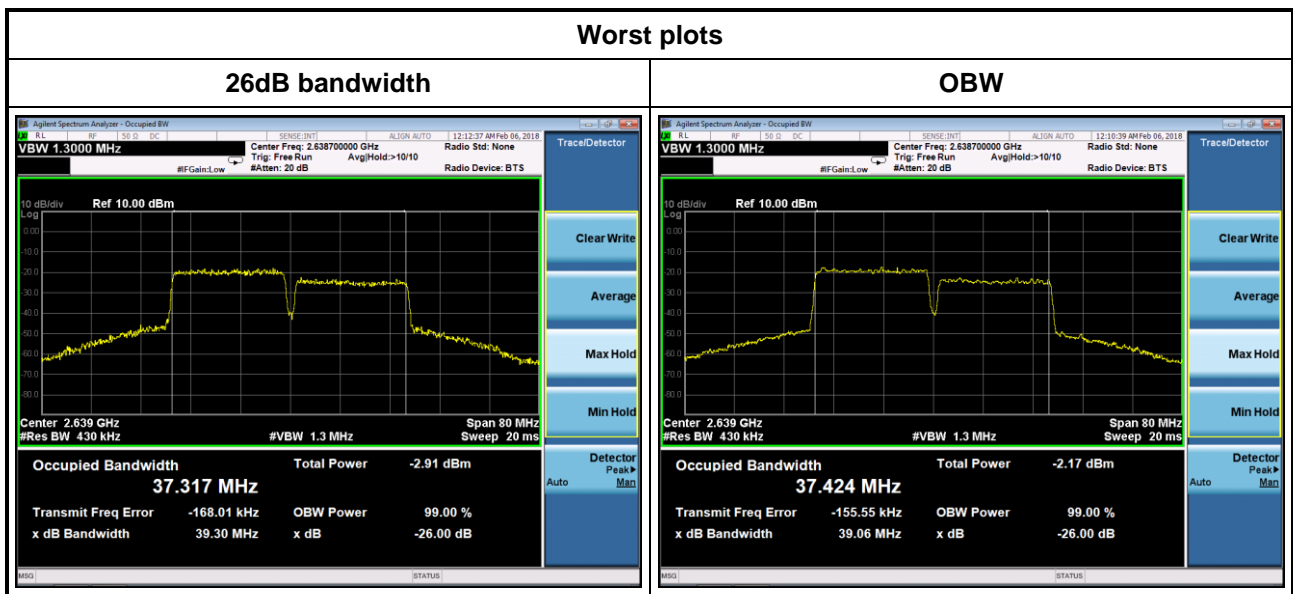


Channel Bandwidth (MHz)	Modulation	Frequency (MHz)	26dB BW (MHz)	99% OBW (MHz)
20	QPSK	2628.8	18.9600	17.8740
20	QPSK	2655.0	18.8300	17.7420
20	QPSK	2680.0	19.0700	17.9250
20	16QAM	2628.8	18.9700	17.8510
20	16QAM	2655.0	18.7400	17.6910
20	16QAM	2680.0	19.0100	17.8990
20	64QAM	2628.8	18.9700	17.8640
20	64QAM	2655.0	18.8200	17.6780
20	64QAM	2680.0	19.0300	17.9110



3.5.4 Test Result of Occupied Bandwidth_CA mode

Channel Bandwidth (MHz)	Modulation	PCC Freq. (MHz)	PCC Freq. (MHz)	26dB BW (MHz)	99% OBW (MHz)
20+20	QPSK	2628.8	2648.6	39.0600	37.4240
20+20	QPSK	2645.6	2665.4	38.8200	36.8570
20+20	QPSK	2660.2	2680.0	38.9300	37.3100
20+20	16QAM	2628.8	2648.6	39.0500	37.3550
20+20	16QAM	2645.6	2665.4	38.7300	36.7190
20+20	16QAM	2660.2	2680.0	38.9700	37.2560
20+20	64QAM	2628.8	2648.6	39.3000	37.3170
20+20	64QAM	2645.6	2665.4	38.7400	36.6210
20+20	64QAM	2660.2	2680.0	39.2300	37.1450



3.6 Frequency Stability

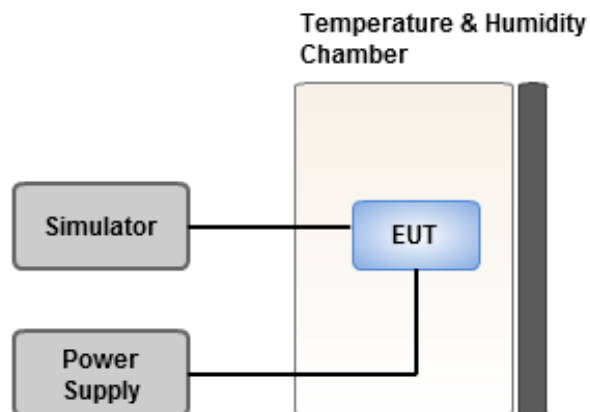
3.6.1 Limit of Frequency Stability

The frequency stability shall be sufficient to ensure that the fundamental emissions stay within the authorized bands of operation

3.6.2 Test Procedures

1. EUT was placed at temperature chamber and connected to an external power supply.
2. Temperature and voltage condition shall be tested to confirm frequency stability.
3. Temperature range is from -40~60°C and voltage range is from lowest to highest working voltage.
4. Tem Link up EUT and simulator. Confirm frequency drift value of simulator and record it.

3.6.3 Test Setup



3.6.4 Test Result of Frequency Stability_CDD mode

Temperature (°C)	Voltage (ac)	Frequency Drift (ppm)			
		CB: 5MHz	CB: 10MHz	CB: 15MHz	CB: 20MHz
60	120	-0.012	-0.013	-0.015	-0.014
50	120	-0.013	-0.012	-0.014	-0.013
40	120	-0.012	-0.015	-0.013	-0.014
30	120	-0.013	-0.014	-0.016	-0.012
20	120	-0.012	-0.016	-0.015	-0.015
10	120	-0.015	-0.013	-0.013	-0.013
0	120	-0.012	-0.012	-0.014	-0.014
-10	120	-0.013	-0.016	-0.015	-0.015
-20	120	-0.012	-0.015	-0.016	-0.016
-30	120	-0.013	-0.012	-0.015	-0.018
-40	120	-0.012	-0.014	-0.016	-0.017
20	138	-0.014	-0.015	-0.017	-0.018
20	102	-0.015	-0.014	-0.014	-0.019

3.6.5 Test Result of Frequency Stability_CA mode

Temperature (°C)	Voltage (ac)	Frequency Drift (ppm)
		CB: 20MHz+20MHz
60	120	-0.012
50	120	-0.012
40	120	-0.013
30	120	-0.014
20	120	-0.013
10	120	-0.016
0	120	-0.015
-10	120	-0.013
-20	120	-0.014
-30	120	-0.013
-40	120	-0.014
20	138	-0.013
20	102	-0.015

4 Test laboratory information

Established in 2012, ICC provides foremost EMC & RF Testing and advisory consultation services by our skilled engineers and technicians. Our services employ a wide variety of advanced edge test equipment and one of the widest certification extents in the business.

International Certification Corp (EMC and Wireless Communication Laboratory), it is our definitive objective is to institute long term, trust-based associations with our clients. The expectation we set up with our clients is based on outstanding service, practical expertise and devotion to a certified value structure. Our passion is to grant our clients with best EMC / RF services by oriented knowledgeable and accommodating staff.

Our Test sites are located at Linkou District and Kwei Shan Hsiang. Location map can be found on our website <http://www.icertifi.com.tw>.

Linkou

Tel: 886-2-2601-1640

No. 30-2, Ding Fwu Tsuen, Lin
Kou District, New Taipei City,
Taiwan, R.O.C.

Kwei Shan

Tel: 886-3-271-8666

No. 3-1, Lane 6, Wen San 3rd St.,
Kwei Shan District, Tao Yuan City
333, Taiwan, R.O.C.

Kwei Shan Site II

Tel: 886-3-271-8640

No. 14-1, Lane 19, Wen San 3rd
St., Kwei Shan District, Tao Yuan
City 333, Taiwan, R.O.C..

If you have any suggestion, please feel free to contact us as below information

Tel: 886-3-271-8666

Fax: 886-3-318-0155

Email: ICC_Service@icertifi.com.tw

==END==