

EXHIBIT 10: EXTERNAL PHOTOGRAPHS

SECTION 2.1033 (c) (12)

Photographs (8"x10") of the equipment of sufficient clarity to reveal equipment construction and layout, including meters, if any, and labels for controls and meters and sufficient views of the internal construction to define component placement and chassis assembly. Insofar as these requirements are met by photographs or drawings contained in the instruction manuals supplied with the product certification request, additional photographs are necessary only to complete the required showing.

Response:

The external photographs of the **Nokia FA3UB 5G AirScale 24 GHz mmWave Radio, FCC ID: 2AD8UFA3UB01** are below.

Exhibit 10 – External Photographs *continued*

Nokia AirScale 28 GHz Radio Unit (FA3UB),, FCC ID: 2AD8UFA3UB01

Front View FA3UA (Extension Module)



Back View FA3UA (Extension Module)

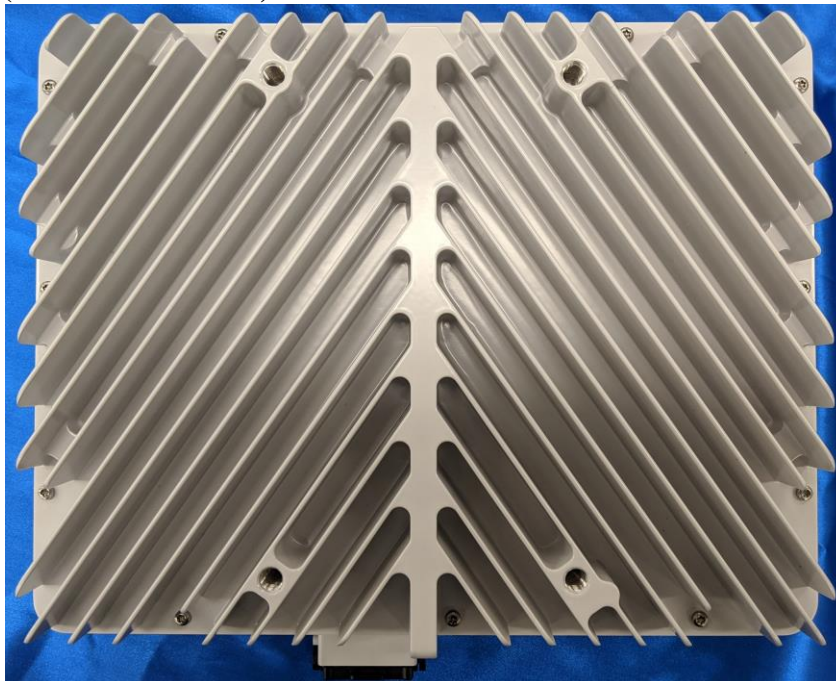


Exhibit 10 – External Photographs *continued*

Right Side FA3UA (Extension Module)



Left Side FA3UA (Extension Module)



Exhibit 10 – External Photographs *continued*

Top View FA3UA (Extension Module)



Bottom View FA3UA (Extension Module)

