

EXHIBIT 10: EXTERNAL PHOTOGRAPHS

SECTION 2.1033 (c) (12)

Photographs (8"x10") of the equipment of sufficient clarity to reveal equipment construction and layout, including meters, if any, and labels for controls and meters and sufficient views of the internal construction to define component placement and chassis assembly. Insofar as these requirements are met by photographs or drawings contained in the instruction manuals supplied with the product certification request, additional photographs are necessary only to complete the required showing.

Response:

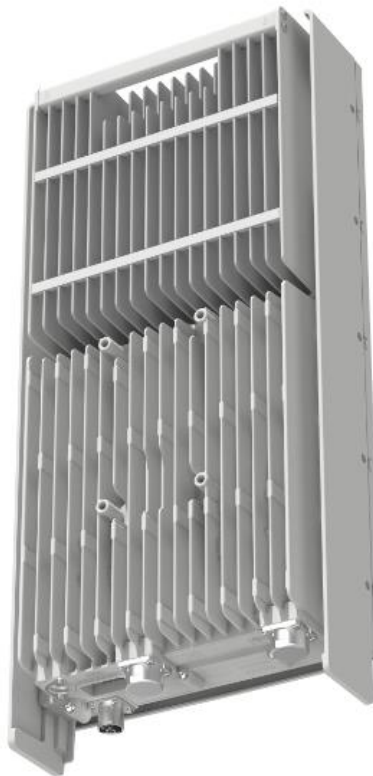
The external photographs of the **Nokia AirScale 28 GHz Radio Unit (AEUB)**,, FCC ID: 2AD8UAEUB01 are below.

Nokia AirScale 28 GHz Radio Unit (AEUB),, FCC ID: 2AD8UAEUB01

Front View



Rear View



Left Side



Right Side



Top View



Bottom View

