

**PHOTOGRAPHS OF THE INTERIOR OF AN
CEREC RADIO DEVICE,
OPERATING IN THE RANGE 2400-2483.5 MHz,
BRAND SIRONA, MODEL 654891 D392.**

**14071604.p01
March 18, 2015**

FCC listed : 90828
Industry Canada : 2932G-2
R&TTE, LVD, EMC Notified Body : 1856

TÜV Rheinland Nederland B.V.
Eiberkamp 10
9351VT Leek
The Netherlands

Telephone: +31 594 505005
Telefax: +31 594 504804
Internet: www.tuv.com/nl
E-mail: info@tuv-eps.com



Description of test item

Test item : CEREC Radio Device
Manufacturer : Benchmark Electronics B.V.
Brand : Sirona
Model(s) : 654891 D3492
Serial number(s) : n.a.
Revision : --
Receipt date : February 18, 2015

Applicant information

Applicant's representative : Mr. W. Eiff
Company : Sirona Dental Systems GmbH
Address : Fabrikstrasse 31
Postal code : D-64625
City : Bensheim
Country : Germany
Telephone number : + 49 (0)6251 / 16-3782
Telefax number : + 49 (0)6251 / 16-2902

Report written by : R. van der Meer

Report date : March 18, 2015

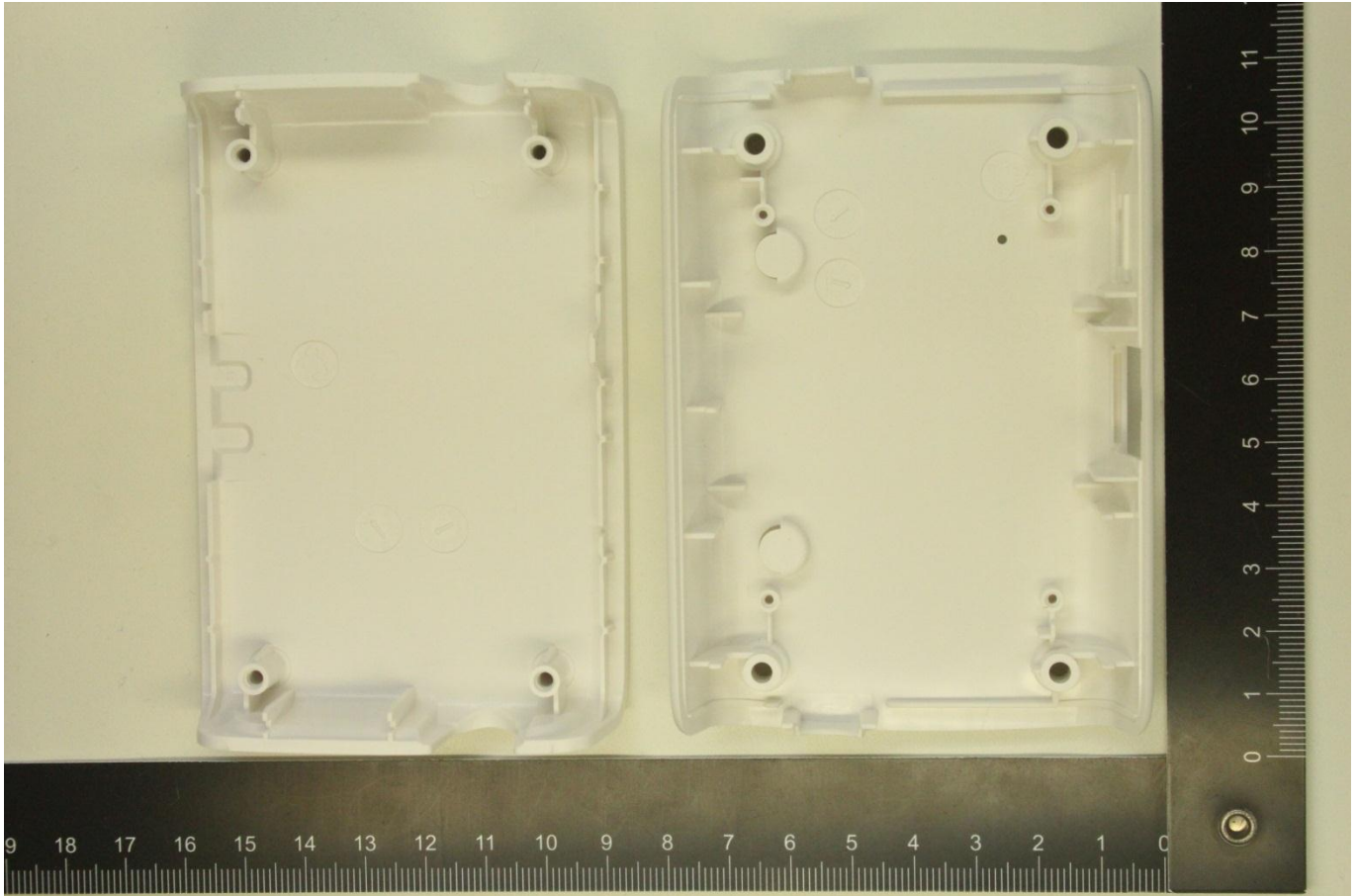


Table of contents

1.1	INTERNAL VIEW 1, INSIDE CABINET – PCB REMOVED.....	4
1.2	INTERNAL VIEW 2, PCB AS MOUNTED IN THE UNIT	5
1.3	INNER ASSEMBLY, PCB VIEW.....	6
1.3.1	PCB view, Front side.....	6
1.3.2	PCB view, front side, zoom in to the transmitter part- left side.....	7
1.3.3	PCB view, front side, zoom in to the transmitter part- right side.....	8
1.3.4	PCB view, Front side- shields removed	9
1.3.5	PCB view, front side, zoom in to the transmitter part- left shield removed-Tpiece removed	10
1.3.6	PCB view, front side, zoom in to the transmitter part- right cover removed- Tpiece removed.....	11
1.4	PCB VIEW - REAR SIDE	12

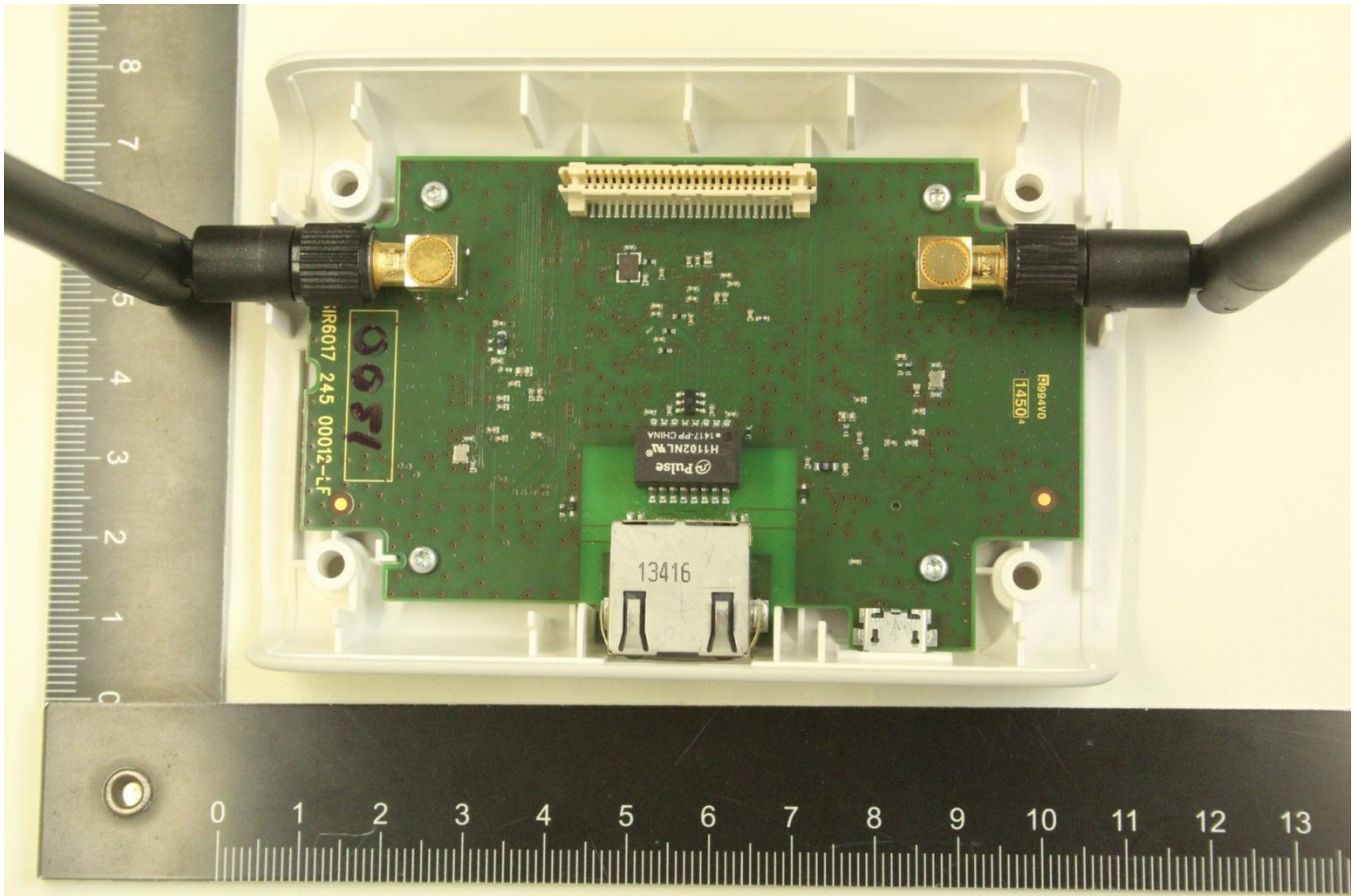


1.1 Internal view 1, inside cabinet – pcb removed.





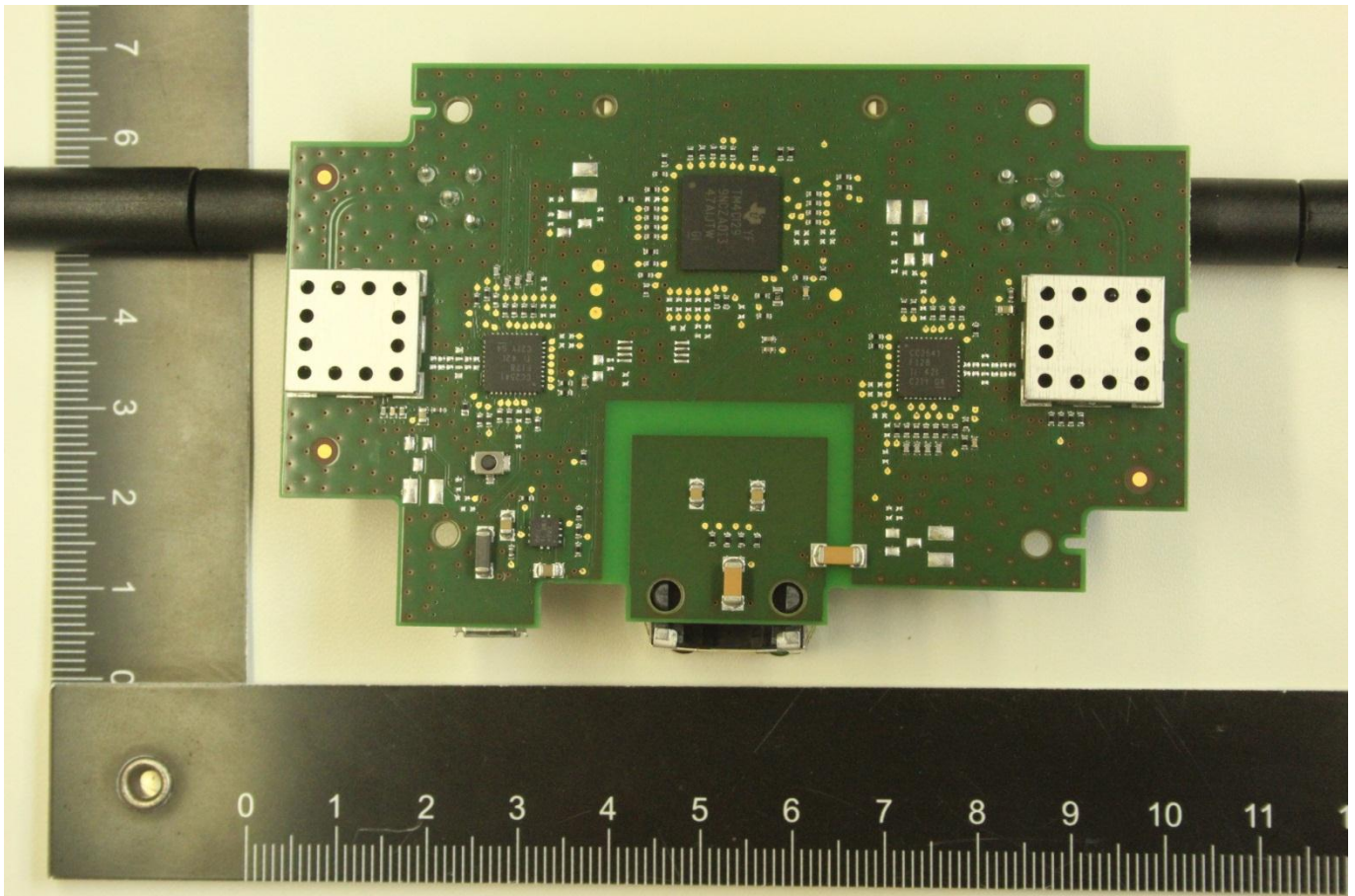
1.2 Internal view 2, PCB as mounted in the unit





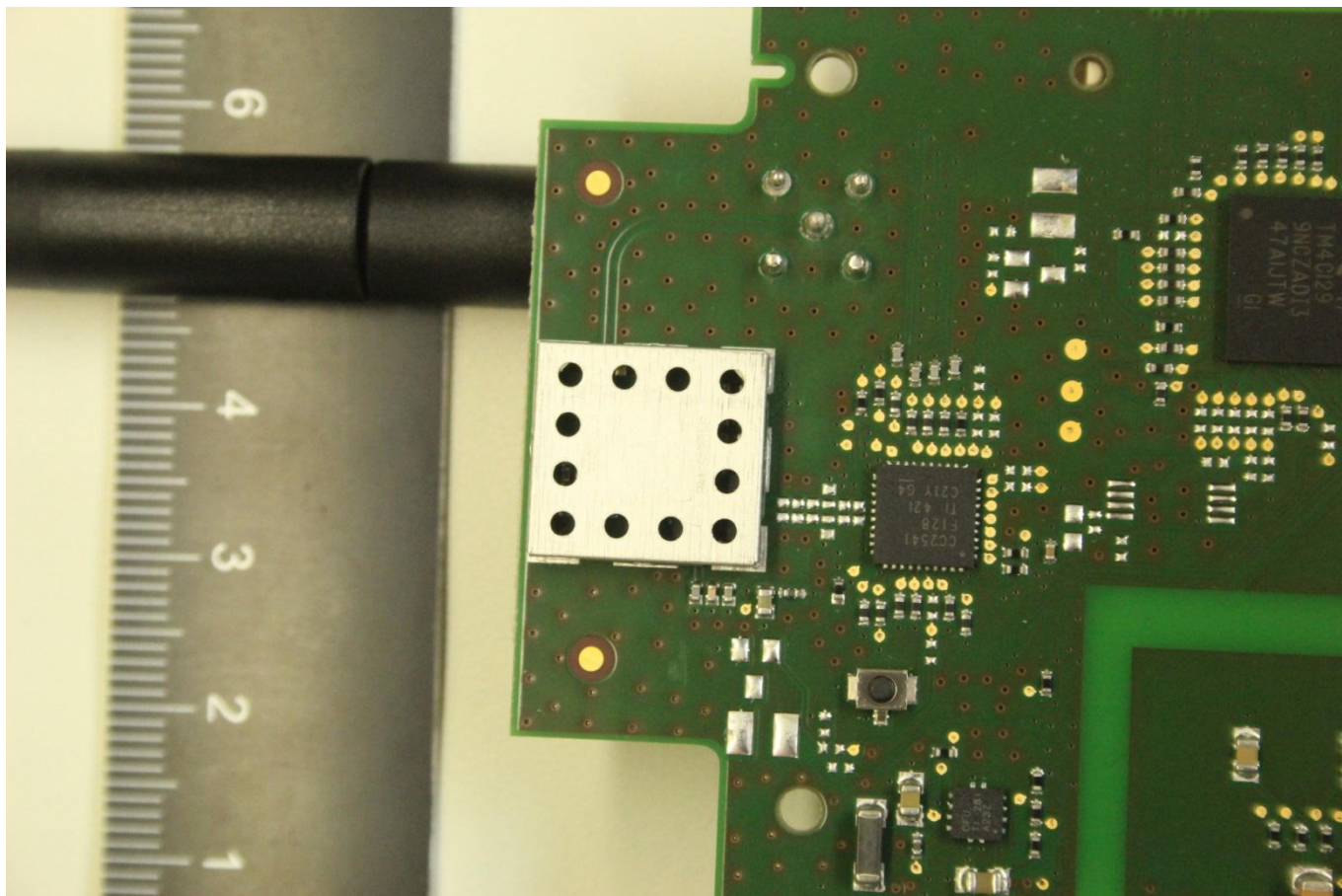
1.3 Inner assembly, PCB view

1.3.1 PCB view, Front side



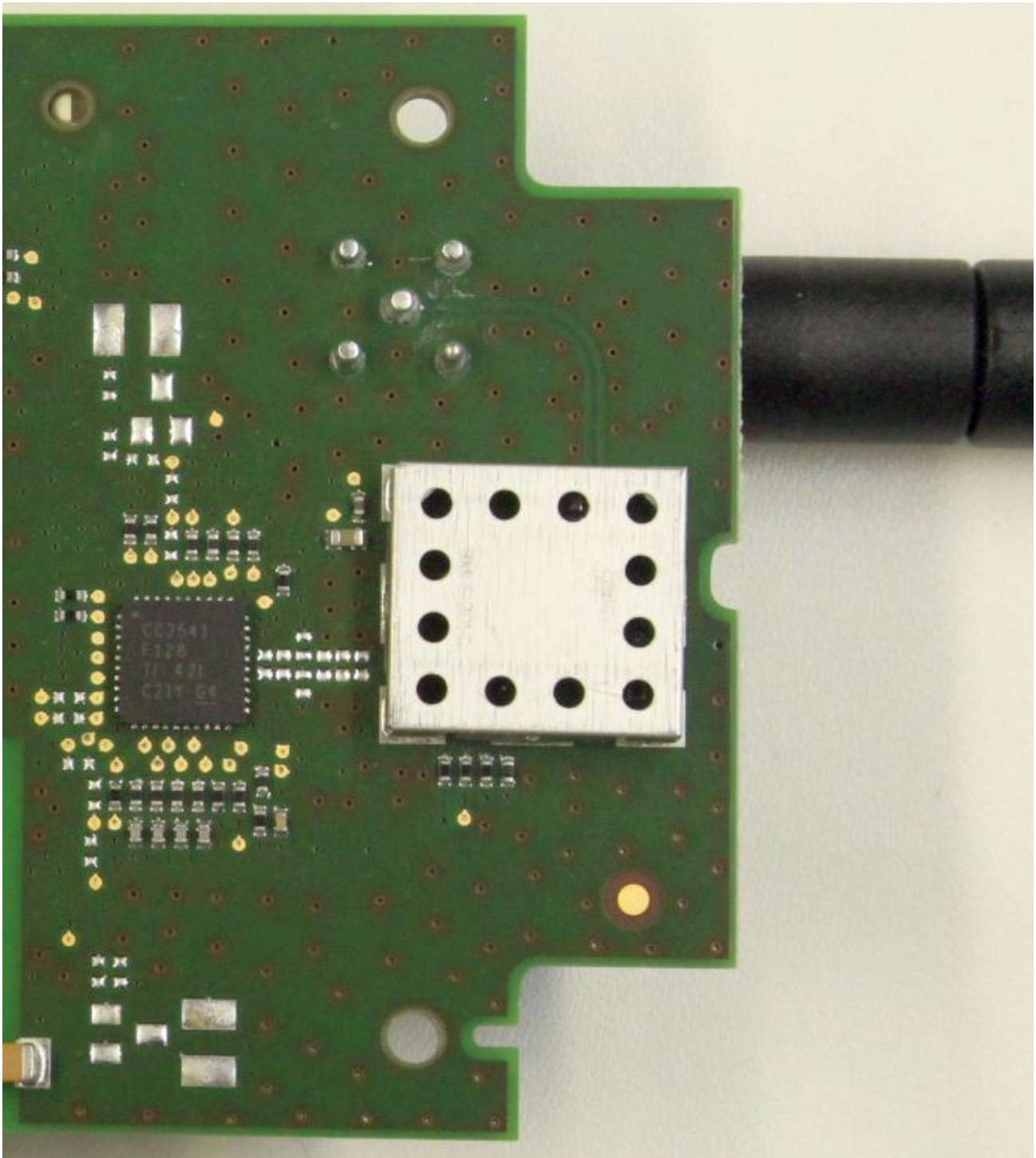


1.3.2 PCB view, front side, zoom in to the transmitter part- left side



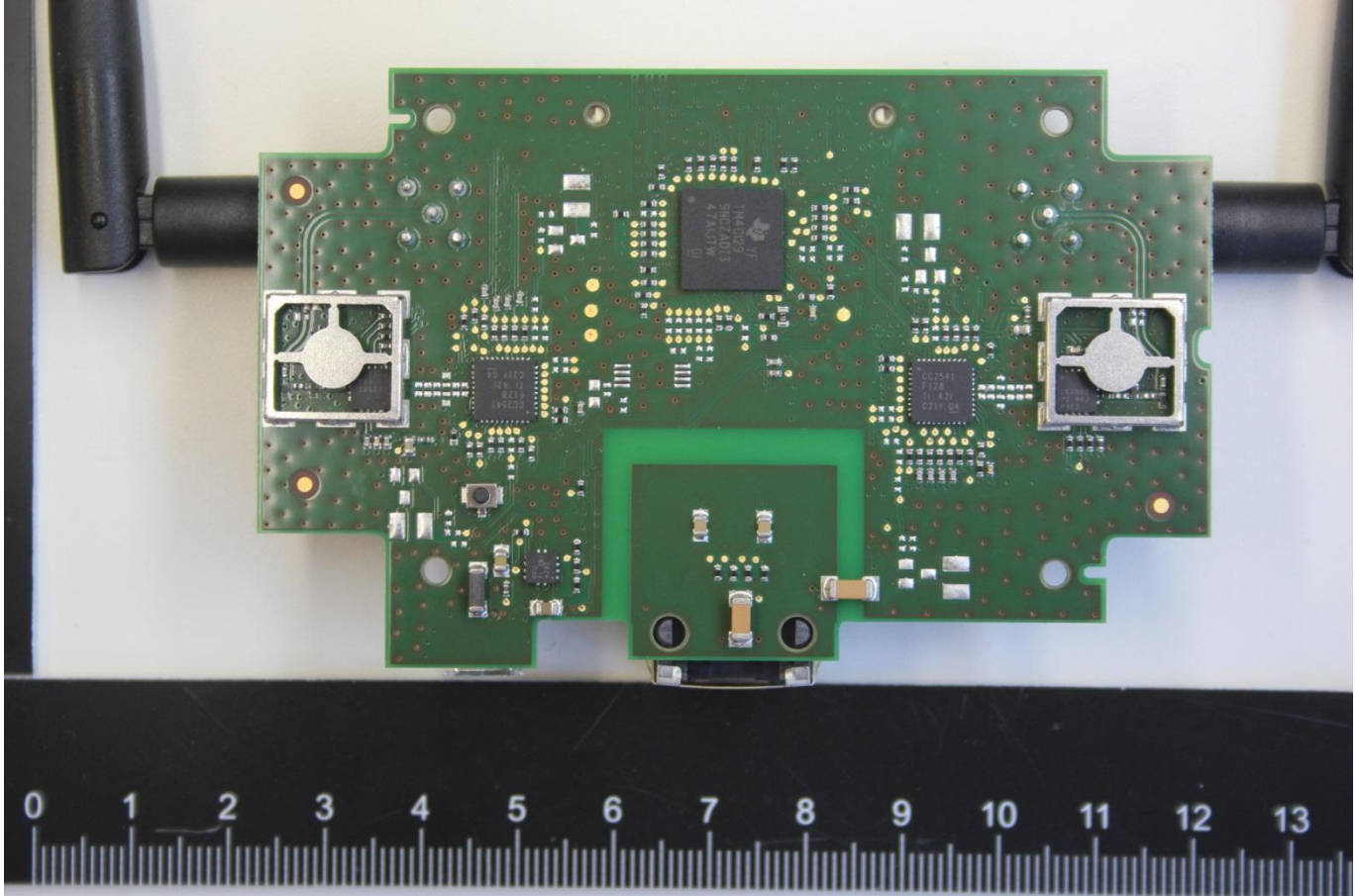


1.3.3 PCB view, front side, zoom in to the transmitter part- right side



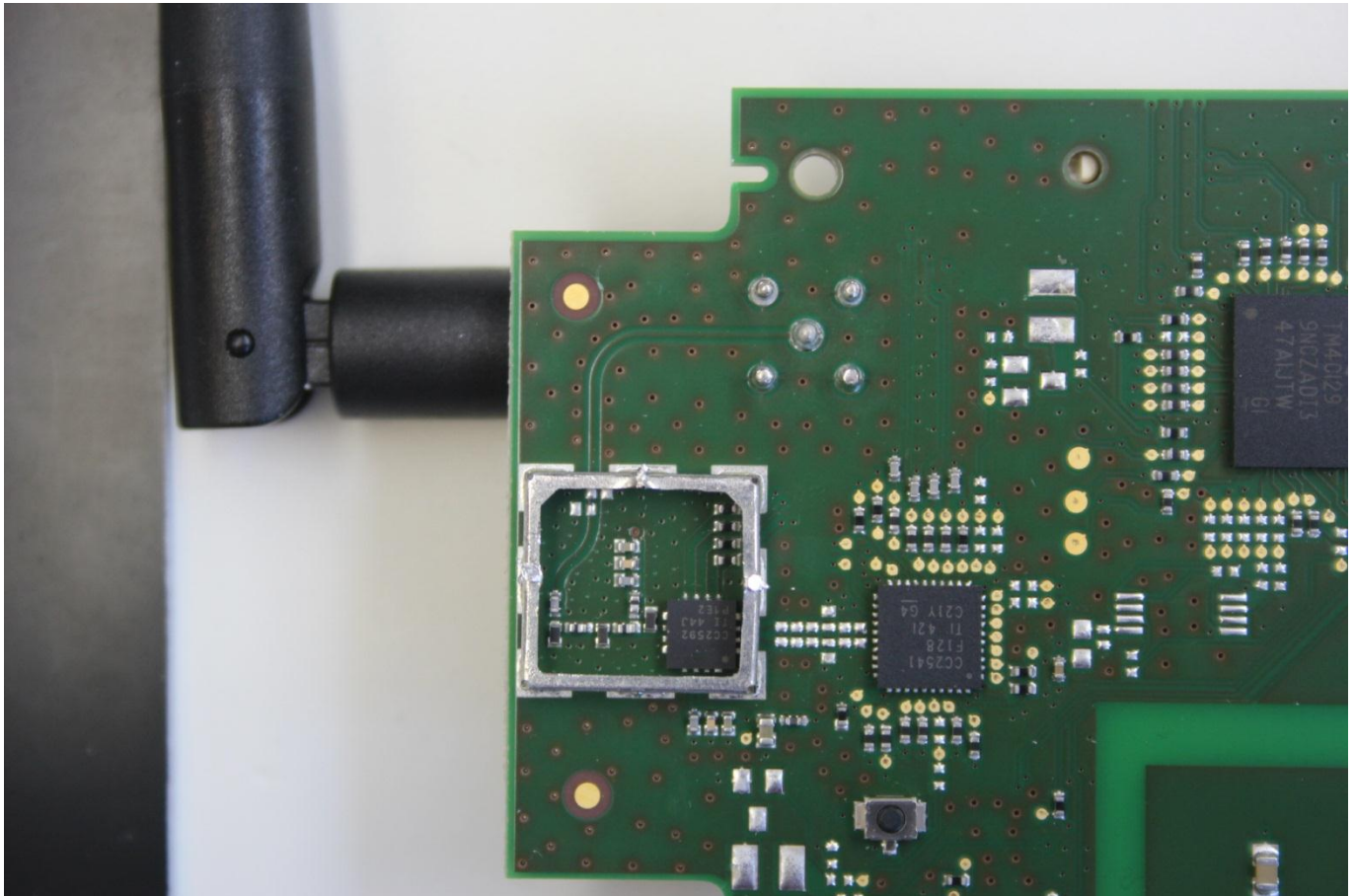


1.3.4 PCB view, Front side- shields removed



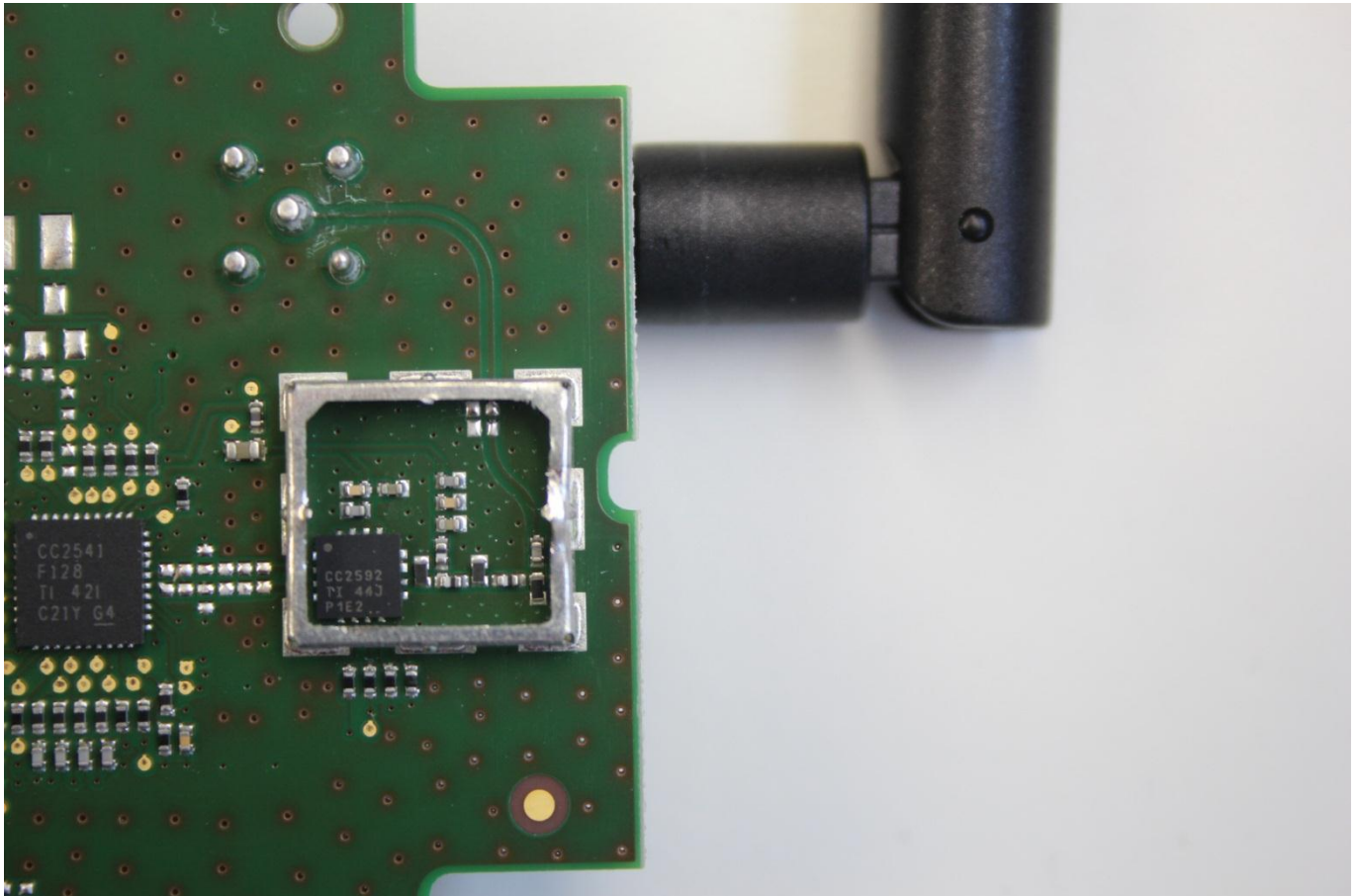


1.3.5 PCB view, front side, zoom in to the transmitter part- left shield removed-Tpiece removed





1.3.6 PCB view, front side, zoom in to the transmitter part- right cover removed- Tpiece removed





1.4 PCB view - Rear side

