



LABEL PLACING FOR LOCATION TRANSMITTER INF-B246-X

Version v1.0

Date December 15, 2015

Author Hanna Luukkonen

LABEL PLACING FOR LOCATION TRANSMITTER INF-B246-X

LIST OF REVISIONS

| Version | Status / Change description | Date | Sign. |
|---------|-----------------------------|------------|-------|
| V1.0 | Initial version | 2015-12-15 | HL |
| | | | |
| | | | |
| | | | |
| | | | |

LABEL PLACING FOR LOCATION TRANSMITTER INF-B246-X

TABLE OF CONTENTS

1 GENERAL4

2 PLACEMENT OF LABELS.....5

LABEL PLACING FOR LOCATION TRANSMITTER INF-B246-X

1 GENERAL

This document illustrates the placement of labels for product variants INF-B246-X. The label design for each product model is found in the label design document.

LABEL PLACING FOR LOCATION TRANSMITTER INF-B246-X

2 PLACEMENT OF LABELS

The labels associated to the product variant in question are always placed identically on the product.

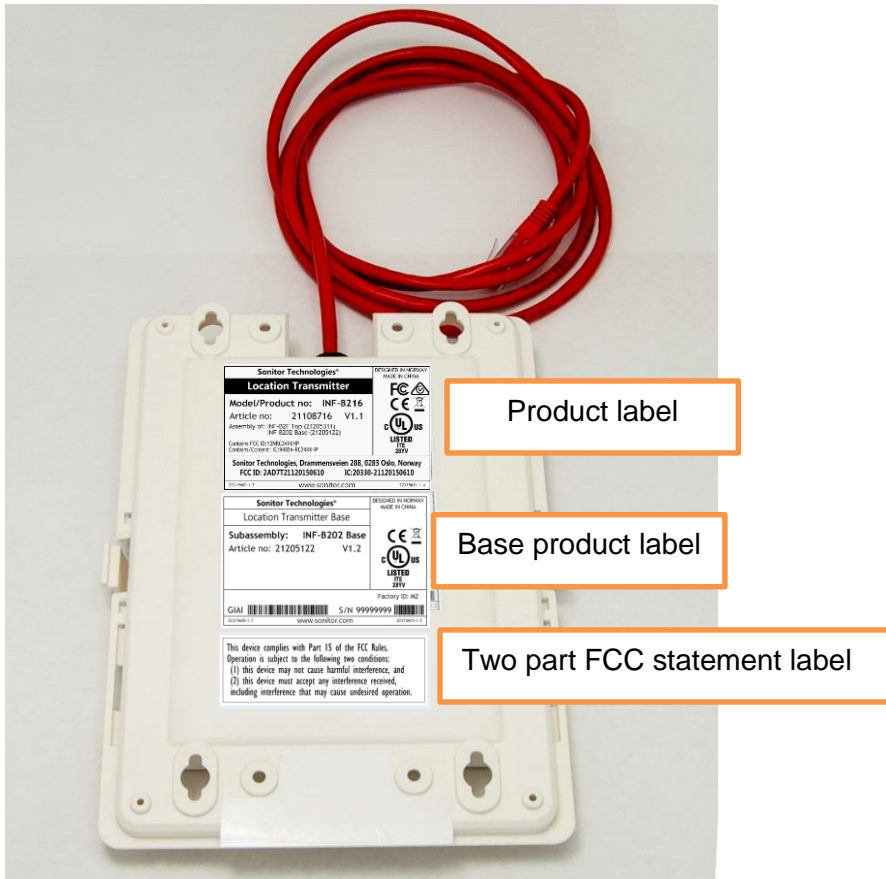


Figure 1 Placement of labels (for reference only) located on the back side of the product

LABEL PLACING FOR LOCATION TRANSMITTER INF-B246-X

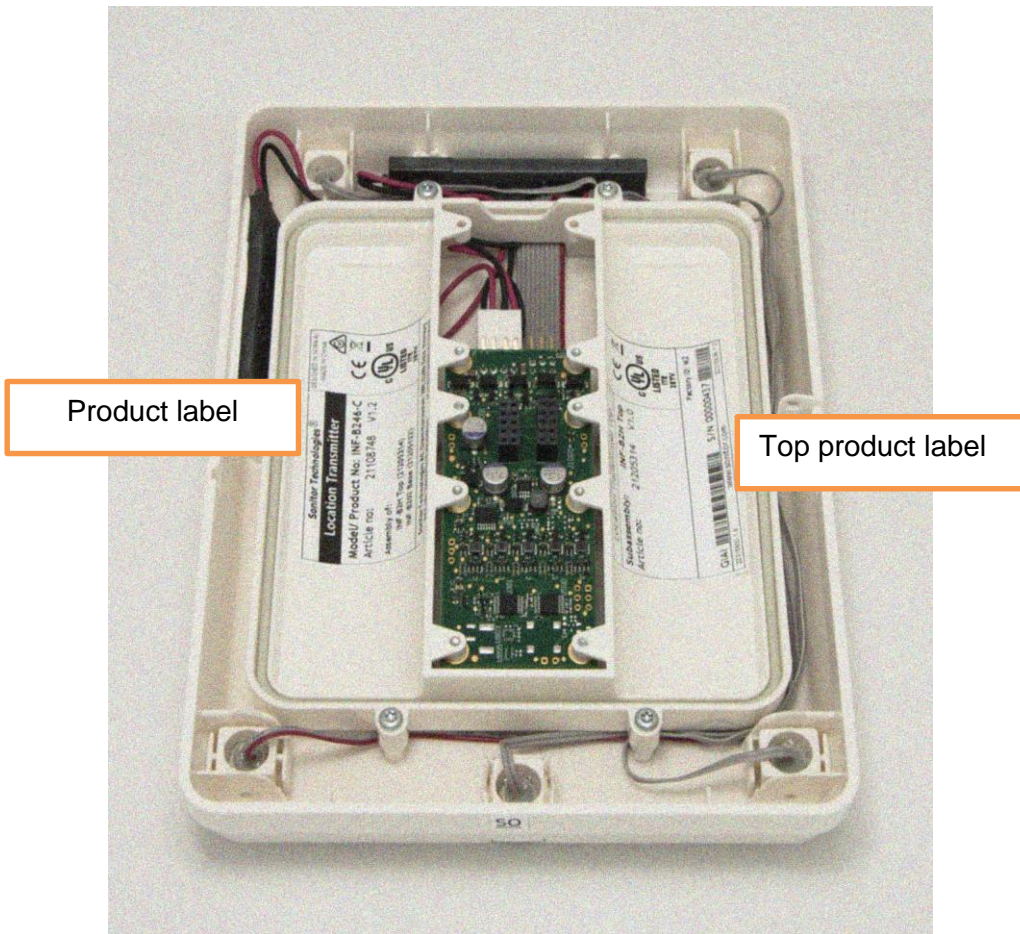


Figure 2 Placement of labels (for reference only) located in the top subassembly